



Hobpton High School Replacement CM Clarification #03

Date: May 11, 2026

Project: **Sampson County Schools – Hobpton High School Replacement**

The following items modify, add to, or delete from the Bid Documents (Plans & Project Manual) dated March 27, 2026, as prepared by Sfl+a Architects and its consultants, and the Bid Manual dated April 13, 2026, for this project. Acknowledge receipt of this CM Clarification in your proposal. Failure to do so may result in the disqualification of your bid. Wherein this Clarification varies or is in conflict with the Bid Documents, the requirements of this Clarification shall govern. In all other particulars, the requirements of the original Project Manual and Bid Documents, including any previous Addenda or Clarifications, shall govern.

This clarification consists of 29 items, 05 attachments, 38 sheets (8.5x11) and 00 sheets (24 x 36)

GENERAL and CLARIFICATION:

Item 1: **Bid Form**

Bid Form has been amended to reflect changes noted within this Clarification; revised form is transmitted within this clarification

Changes include:

- Revised Alternate #11, OPB Door Hardware (BP-0800, BP-0840 & BP-2813)
- Deleted Alternate #15 Preferred Brand Light Fixtures (BP-2600)
- Added new Alternate #16 Hobpton Highway Widening (BP-3100)

Item 2: **CM Clarification Acknowledgement**

In the event a CM Clarification is issued after Bidder has couriered its bid, it is acceptable to acknowledge its receipt and no cost impact via email

Item 3: **Various Trades**

Scope Inquiry:

Metal Angle Information: Details 1/A-501, 4/A-501, 6/A-503, 1/A-505, and similar details indicate 3.5"x3.5" and 6"x6" metal angles; Details 2 & 3/A-504 indicates 3"x3" metal angle, Detail 3/A-502 indicates 2"x2" metal angle and unsized angles appearing to support the metal framing; Detail 5/A-501 indicates unsized angle. Please provide thickness or gauge for these angles

CM Response:

Details 1,2,4&5/A-501, 6/A-503 & 1/A-505 are spray stops provided under BP-0720; Detail 3/A-502 are associated with CFMF provided under BP-0925

For the metal angles indicated, please reference Specification 07 62 00 - Sheet Metal Flashing and Trim 2.3 Galvanized Steel for thickness requirement

Attachment methods should reference the appropriate specification sections (unit masonry, structural steel, cold-formed steel framing, miscellaneous rough carpentry roofing, etc.) or the appropriate trade manual (SMACNA, SSMA or NCMA)

Scope Inquiry: **087100 Door Access Hardware:** Spec indicates door access hardware is furnished under Div 28 Security & Access Controls which appears to conflict with BP-0800 & BP-0840 bid scopes. Please clarify which trade is responsible for this hardware.

CM Response: Please bid work according to the bid scopes; BP-0800 and BP-0840 are responsible to furnish and install.

Item 4: **BP-0150 General Trades**

Scope Inquiry: **Scope Items 1.b.1 & III.a.iii.2** generally reference a skid-steer; please advise is this equipment is to be provided

CM Response: This piece of equipment is not required; disregard any reference to a skid-steer

Scope Inquiry: **Scope Item III.a General Trades Labor:** please confirm man-hours required

CM Response: Base bid to assume 40 hours per week per man

Scope Inquiry: **Scope Item V.a Temporary Facilities - Containers:** please define requirements

CM Response: Waste: 30-yd, 18 months rental, 108 pulls, dump fees @ 4 tons/pull
Metals: 30-yd, 18 months rental, 18 pulls
Total cost shall be reconciled at end of project; tickets must be logged and tracked by BP-0150
Provide credits from the recycling of metals

Scope Inquiry: **Scope Item V.a Temporary Facilities – Sanitary Facilities:** please define requirements

CM Response: Assume 10 toilets with wash stations per month for the stated duration
Total cost shall be reconciled at end of project; tickets must be logged and tracked by BP-0150

Item 5: **BP-0300 Concrete & BP-3100 Sitework**

Scope Inquiry: Under Site Concrete, Item A.iv, BP-0300 is to include “Foundation for dumpster enclosure walls;” however, the enclosure is a monolithic SOG which also supports the enclosure walls. Please advise which trade constructs the dumpster SOG

CM Response: BP-3100 Sitework should install this SOG as it is integral with the approach pad
BP-0300 Concrete scope will be amended

Item 6: **BP-0300 Concrete & BP-0400 Masonry**

Scope Inquiry: **Monumental Site Sign and Site Wall**
Details 7,8&9/A-550 reference structural drawings for reinforcing requirements; this information could not be found. Please provide

CM Response: Please see attached detail for reference

Scope Inquiry: Details 1&2/S-311 indicate CIP rebar dowel for NLB CMU wall; Detail 4/S-302 indicates drill & epoxy dowels. Please advise which detail is required or if either detail (method) is acceptable at contractor’s option.

CM Response: While either method is acceptable; BP-0300 should furnish & install these dowels

Item 7: **BP-0400 Masonry**

Scope Inquiry: Drawing C-510, Detail CDC-01.2340 indicates dugout walls to be split-face CMU. Please provide spec, color, manufactures, etc.

CM Response: Please use Echelon Split Face - Taupe E as basis-of-design.

Scope Inquiry: Drawing C-502, Detail CDC-01.2404, Note #5 refers to both regular and split-face CMU. Please confirm which CMU type is required. If split-face CMU, provide spec, color, etc.; if regular CMU, advise color and finish.

CM Response: Please use Echelon Split Face - Taupe E as basis-of-design.

Item 8: **BP-0400 Masonry & BP-0500 Steel CMC-01, Item 10**

Scope Inquiry: Please confirm which trade is responsible for the 3"x3"x1/4" metal angle in detail 4/A-503

CM Response: Since the issue of CM Clarification 01, the referenced angle has been confirmed to be light-gauge metal (16 ga.) which is not under BP-0500 requirements. As this angle supports the rigid insulation installed under BP-0400, this support angle should also be installed by BP-0400

Item 9: **BP-0500 Structural & Miscellaneous Steel**

Scope Inquiry: **Stage 1223 & Corridor/Ramp 1229B:** Please confirm wall railings are **not** required at the 2-riser steps on each side of the Stage front. Please confirm railings are **not** required in Corridor/Ramp 1229B (steps, walls)

CM Response: Handrails are not required as they do not cross the thresholds indicated by NCBC

Item 10: **BP-0600 Casework**

Scope Inquiry: **115300 - Lab Refrigeration Units:** We have been advised that the specified unit (2.3.b.1.a - Liebherr LCexv 4010) is not available in the US; please provide alternate BOD

CM Response: The basis-of-design needs to be met for DPI requirements. Approved product manufacturers Thermo Fisher and Labcold should have equals. Substitution request for B Medical, Fisherbrand, Gram, Kirsch, LabRepCo would be considered.

Scope Inquiry: **Manufactured Plastic Lam Clad Casework 123216-2.4.G.1:** Wall Hung Units - spec calls for the top of wall hung units to be finished with VGS laminate. Industry standard is melamine, which is most cost effective for a non-visible surface. Please confirm if melamine is acceptable.

CM Response: Laminate to be specified as Basis-of-Design

Item 11: **BP-0600 Casework & Lab Equipment and BP-2200 Plumbing**

Scope Inquiry: **Lab Casework Fixtures** – BP-0600 Scope Item 2.A.ii.5 indicates furnishing sinks, faucets, eye washes, emergency showers, & mixing valves; however, these fixtures are specified in P-002 Plumbing Fixture Schedule

CM Response: BP-2100 Plumbing is to furnish & install these fixtures
BP-0600 Scope Item 2.A.ii.5 will be deleted

Item 12: BP-0700 Roofing

Scope Inquiry: Product Substitution-Metal Soffit Panels 074293.13-2.2: Construction Metal Products (CMP) Flush Soffit Panels / A-B

CM Response: Substitution Request approved

Scope Inquiry: Product Substitution-Metal Wall Panels 074213-2.2: Construction Metal Products (CMP) Metal Wall Panels / A-B

CM Response: Substitution Request approved for panel type MTL PNL-1 and MTL PNL-4

Scope Inquiry: Drawing A-130 Coordination of Details

Detail 3/A-535 on C/L 15 shows a roof detail with no parapet; however, Elevation 3/A-305 and Section 2/A-316 indicate a parapet. Please change detail to 2/A-533

Detail 1/A-533, between Line 12 & 13, shows a metal framed wall with metal panel veneer; however, A-112A, shows a CMU wall with metal panel veneer. Please change detail to 2/A-533

Detail 1/A-533, between Line 8 & 9, shows a metal framed wall with metal panel veneer; however, A-112B, shows a CMU wall with metal panel veneer. Please change detail to 2/A-533

Details 3/A-531 & 6/A-502 show the clerestory roof gutter; however, the gutter profiles do not match. Please amend details to match

Detail 2/A-533, Clerestory East & West walls, shows a CMU wall with metal panels; however, A-103 shows these walls as metal framed with metal panels. Please provide a detail similar to 2/A-533 with no parapet

Detail 1/A-533, North wall, Multipurpose Room, between C/L 3 & 4, shows a parapet on metal framing with metal panel veneer; however, Elevation 2/A-212 and Section 3/A-314 show CMU with brick veneer. Please change detail to 3/A-533

Detail 1/A-533, between C/L 1 & 2, shows a metal framed wall with metal panels; however, Elevations 1/A-211, 3/A-212, & 3/A-213 and Section 1/A-314 show CMU with brick veneer. Please change detail to 3/A-533

Detail 3/A-534, along C/L 4 & 5 (double wall), is used incorrectly as this detail shows the Admin wall being fire rated; however, the Gym wall along C/L 4 is fire rated. Please change detail to 3/A-504

Detail 1/A-534, C/L H, Admin area, shows the Lobby/Atrium Eave as metal panel on metal framing; however, Elevations 1 & 2/A-211 and Section 1/A-314 show brick veneer on CMU. Please change detail to 3/A-533

Detail 1/A-533, between C/L 10 & 11, shows a metal framed wall with metal panel veneer; however, Elevations 2 & 3/A-211 show CMU with brick veneer. Please change detail to 3/A-533.

Detail 2/A-302 references 4/A-321 which does not exist. Please change this reference to 1/A-316

Detail 1/A-302 references detail 3/A-315 along C/L C showing the Mechanical Platform & Gym roof areas; however, Detail 3/A-315 is incorrectly titled as "Roof at Multipurpose & Dining" as the wall section at Multipurpose & Dining is a rated double wall. Further, Drawing A-130 does not reference Detail 3/A-315 between C/L 3-4 along C/L C. Please add Detail 3/A-315 and change 3/A-315 title to "Roof at Mechanical Platform & Gym"

CM Response: CMAR has reviewed Drawing A-130 and submitted the above RFI outlining coordination issues with details. This information is provided in advance of Designer's formal response to assist bidder in its bid preparation.

Item 13: BP-0720 Sprayed Foam Insulation & BP-0790 Caulking, Sealants & Waterproofing

Scope Inquiry: **Air Barrier Continuity:** Detail 2/A-502 indicates the transition membrane wrapping the face of the metal framing at top of wall. This appears contrary to how air barrier functions.

Please confirm if air barrier should wrap the wood underside to the sheathing behind the sprayed insulation or install according to the detail.

CM Response: Please reference Roofing Details (sheets A-530 through A-535) on clarifications of transitions from roofing membrane / air-water barrier (transition membrane) / spray foam insulation. Clarification and updates were made in Addendum 3 to delineate roofing detail and cladding scope of work.

Item 14: BP-0834 Overhead Doors

Scope Inquiry: **Product Substitution Request – 083323-2.1.B Overhead Coiling Doors: McKeon Door Model AL3014**

CM Response: No exception taken

Item 15: BP-0840 Aluminum Glazed Systems

Scope Inquiry: Drawing A-611 - Glazing Schedule indicates type IG2 as "Tinted;" however, Spec 088000 does not state the desired "Tinted" glass product. Please state the desired "Color/Product" for IG2

CM Response: Tint should be Crystal Gray

Scope Inquiry: Drawing A-611 - Glazing Schedule indicates type IG1C as "Clear – INTERIOR USE;" however, Spec 088000 indicates IG1C as Tinted: Crystal Gray and Low-E Coated. Please state the desired makeup of this Interior insulated glass type

CM Response: IG1C should be clear-Interior Use

Scope Inquiry: Drawing A-611 - Glazing Schedule and Spec 088000-2.4-D.2.C: Glass Type IG3 is noted to be Matte Frosted but also have a translucent YELLOW applied film. Please confirm that IG3 EXTERIOR is to be a Crystal Gray TINTED Low-E glazing

with the INTERIOR receiving a Matte/Frosted YELLOW film applied to the interior surface (surface #4); otherwise, please state the intended makeup.

CM Response: Correct; glazing to be TINTED Crystal Gray but film noted applied Surface 1

Scope Inquiry: Drawing A-611- Glazing Schedule and Spec 088000-2.4- E.2.B & C: Glass Type IG4 is noted to be tinted Crystal Gray on the INTERIOR glass lite and not the outboard EXTERIOR glass lite. IG4 is also noted to be “Matte Frosted” but glazing schedule notes an applied film. Please advise if Crystal Gray tinted substrate is to be EXTERIOR lite or INTERIOR lite. Please advise if Matte Frosted finish is to be Applied Film as noted on schedule or a fabricated glass lite as specified.

CM Response: TINTED Crystal Gray on Surface 1, Matte Frosted finish should be on the interior and not applied film

Scope Inquiry: Drawing A-611 - Glazing Schedule and Spec 088000-2.4-F. 2.c: Glass Type IG5 is noted to be an “Applied Film with Frit;” however, spec would indicate a Clear glazing substrate with a fabricated “Dot, White” Frit. Please advise if the “Dotted – White Frit” on IG5 is to be an Applied Film on Surface 4 or a fabricated glass Frit on Surface 3.

CM Response: Surface should be Dotted – White Frit and applied to Surface #3

Scope Inquiry: Specs 084313 Storefront & 084413 Curtainwall both indicate aluminum finish is to be “Anodized Aluminum Finish” as selected by architect from manufacturers full range of options; however, all anodized finishes do not have the same cost or lead times for production. Please provide the desired anodized finish “Color” for the aluminum curtain wall, storefront, and swing entrances.

CM Response: Interior to be Clear Anodized; Exterior to be Black Anodized

Scope Inquiry: Drawing A-600 and Specs 084313 Storefront & 084413 Curtainwall all indicate aluminum swing doors to have 6” Stiles; however, 6” sightline door stiles are not a standard offering from most aluminum manufacturers. Please review and confirm if semi-custom 6” stiles are required or if standard 5” wide stiles will be acceptable

CM Response: Doors are Standard Wide Stiles

Scope Inquiry: Preliminary structural review appears to indicate exterior elevations SF-43, SF-44 & SF-45 will not wind load as the specified 2” x 4-1/2” Front-set storefront system due to opening height and mullion locations. These openings most likely require a change to steel reinforced 2” x 6” storefront system or into a typical curtainwall system like CW01. Considering the front-set storefront will not wind load effectively, with crippled-horizontal members or substantial panel widths, please review and advise how to proceed.

CM Response: Designer understands that a more rigid system may be required for resist wind loading. Structural reinforcement may be required based on appropriate frames as suggested by manufacturer

Scope Inquiry: Spec 084313-2.3.A.4. states “exterior storefront glazing panel position within frame is to be as indicated on drawings;” however, multiple details show Front-set and Center-set storefront systems in the same typical opening and a few

details show Front-set at cut section but then show Center-set on sill / jamb / head detail. Please review and advise which glazing panel position (Front-set or Center-set) is desired for exterior storefront locations as these systems have different structural loading characteristics.

CM Response: Exterior to be Front Set; Interior to be Center Set

Scope Inquiry: Please confirm CW01, SF33, SF37, SF42, SF43, SF44 & SF45 to be Curtainwall Framing in accord with details on A-542,A-502, A-313 & A-311.
Please confirm SF17, SF18, SF19, SF20, SF21, SF27, SF28, SF39 & SF40 are Front Set Storefront Framing as per Details 7 & 8/A-508 and 1/A-319

CM Response: Please confirm all other locations/elevations are Center Set Storefront
Exterior to be Front Set; Interior to be Center Set

Scope Inquiry: Drawing A-111C, Conference Room 1105, please provide missing storefront tag
CM Response: Marked as SF10

Scope Inquiry: Drawing A-601 Door Schedule indicates aluminum exit doors to be FG; however, Spec 084313-2.4.L.6.C.2.a indicates doors to have mid-rail at exit hardware devices. Please update A-601 Door Schedule accordingly.

CM Response: Please see A-601 for clarifications

Scope Inquiry: Detail 1/A-319, Room 2206, SF 39 & 40, please confirm if fire-rated insulation is required above ceiling

CM Response: Not required; ceiling is not a rated assembly; fire-rated plywood is for support purposes

Item 16: BP-0925 Drywall

Scope Inquiry: Please update Detail 2/A-303 to reflect the new chase wall added on Drawing A-111F in Addendum 03. Please update Drawing A-010 Wall Partitions to add partition type C8 associated with this chase wall

CM Response: Partition C8 (similar to C6 assembly, 8" framing) to be added to the Wall Partitions sheet

Scope Inquiry: Detail 1/A-319, Room 2206, SF 39 & 40, requires fire-rated plywood above ceiling for support purposes; please confirm which trade is responsible for this wood

CM Response: BP-0925 to provide the fire-rated plywood

Item 17: BP-1000 Specialties

Scope Inquiry: **Toilet Accessories:** Detail 5/CC-A-101 does not indicate SDs at lavatories. Please amend detail to indicate two SDs are required

CM Response: Provide two soap dispensers (SD)

Item 18: BP-1014 Signage

Scope Inquiry: **Product Substitution Request – Signage 101400-2.11 LED Screen Marque: Watchfire (16mm full color)**

CM Response: No exception taken

Scope Inquiry: **Dimensional Letters – Missing Information:** 101400 - 2.6.A.3.b & 2.6.A.3.c does not provide character thickness. Please provide character thickness and amend specs

CM Response: Dimensional letters to be 2" thick for building dimensional letters

Scope Inquiry: **Dimensional Letters–Conflicting Information:** 101400-2.6.A.3.d states mounting 1" characters on two sides of Primary Monumental Site Sign Wall, 70 characters total; Details 3, 5, 7 & 8/A-550 show mounting characters on top and front face only, with 17 total characters, 6" wide, and of variable height. Please clarify requirements and amend specs as required

CM Response: Follow details on letters as indicated on A-550

Scope Inquiry: **Interior Acrylic Letters – Missing Information:** 101400-2.6.B states mitered corners to be provided. Please clarify if machine cut or laser cut acrylic is required

CM Response: Machine cut is recommended for the thick interior letters

Item 19: **BP-1020 Operable Partitions**

Scope Inquiry: **Operable Partitions – Door Pocket Width:** Electric operable partitions require a minimum clearance of 4'-8"; current pockets will need to be enlarged. As these doors are bound by mechanical rooms on each side, please advise how Designer would like to address this issue?

CM Response: Basis-of-Design pocket is designed to 4'-8" with the exception of the pocket at Room 2302 and 2304 indicated to be 4'-5." This pocket will be adjusted on the IFC / Conforming set.

Scope Inquiry: **Product Substitution Request – 102239-2.2.A Folding Panel Partitions: Moderco Signature Series**

CM Response: Substitution Request is not approved

Item 20: **BP-1163 Indoor Athletic Equipment**

Scope Inquiry: **Telescoping Bleachers:** 126613-2.6.C references a semi-permanent Media Platform; however, Drawings A-111E & A-425 do not indicate such. Please advise and amend documents accordingly

CM Response: This section was removed with the specification issued during Addendum 01

Item 21: **BP-1168 Exterior Athletic Equipment**

Scope Inquiry: **Exterior Athletic Equipment:** please provide spec

CM Response: Exterior Athletic Equipment is part of owner scope
Bid Package will be amended to reflect this change

Scope Inquiry: **321800 Synthetic Track Surfacing:** please provide a list of acceptable manufacturers as none are indicated

CM Response: Designer requests a submittal on a system that complies with the contract documents, plans, and specifications. Designer will review that information and provide a response.

Item 22: **BP-1220 Window Treatments & BP-1161 Theater & Stage Equipment**

Scope Inquiry: **Scope Change – Spec 122213 Draperies**

CM Response: **BP-1161 will be responsible for the draperies as this product is more in-line with stage curtains than window shades. Modified Bid Scopes are attached**

Item 23: **BP-2100 Fire Protection**

Scope Inquiry: **Fire Pump and Enclosure:** Drawing C-202 & C-402 indicate the fire pump and house to be OFOI which is contrary to FP-010 and previous comments, budgets, etc. Please amend Civil drawings to reflect CFCI

Pump enclosure will require a floor drain; however, connection to this drain is not addressed. Please provide further direction

CM Response: Fire pump and its enclosure is to be provided by BP-2100 Fire Protection as outlined in its bid scope. Owner provides the tank, foundation, and associated piping, etc.

A 4" SCH 40 PVC line should be extended from the floor drain to the nearby swale

Item 24: **BP-2200 Plumbing**

Scope Inquiry: **Plumbing Lines to Nowhere:** On P-111A in Art Room 1516 there is a corner chase with 2 pipes; these pipes are 6" RD & 8" ESD per P-113, Notes 10 & 9 and P-112A, Notes 3 & 4, respectively. On P-111A, Notes 8 & 7 reference these same pipes. However, the 6" RD pipe is incorrectly indicated 15' outside the chase and the 8" ESD line runs underground, ending at Vestibule 1325. Please amend drawing by moving Notes 8 & 2 to the chase and reissue drawing.

CM Response: The storm drainage piping in question has been rerouted. The primary and secondary storm drains between grid lines 14 and 15 route overhead within the first floor to pump room 1326. The primary storm drainage piping goes vertically from within the first floor headspace to below grade within pump room 1326. The emergency storm drainage piping discharges through the plan south wall of pump room 1326. The primary roof drain near grid point J-16 had its piping rerouted plan north to pump room 1327. The piping for this roof drain goes vertically from within the first floor headspace to below grade within pump room 1327. Updated drawings showing these routing and annotation changes shall be provided as part of the final bid addendum.

Scope Inquiry: **Fire Pump Enclosure:** Floor Drain required

CM Response: Furnish & install a 4" floor drain for connection by BP-3100

Item 25: **BP-2300 HVAC**

Scope Inquiry: **Product Substitution Request – Louvers 089100-2.1.a: Air Flow Company Model EA-623**

CM Response: No exception taken

Scope Inquiry: **Duct Wrap:** Drawing M-401 has been updated and now includes a note to provide all return duct within mechanical room with 1.5" acoustic liner. Please confirm if this duct requires external insulation as well

CM Response: Yes, exterior insulation is required; see duct insulation/jacketing schedule in 230700, 3.16 and 3.20

Scope Inquiry: **Alternate #3 – Concessions & Restrooms:** Drawing CC-M-101 indicates Louver L-FH1 which is not listed in the Louver Schedule. Please add to the Schedule
CM Response: Louver is a 24x24 Louver, same make/model/accessories as L-CB1

Item 26: **BP-2600 Electrical**

Scope Inquiry: **Drawing E-211A Electrical Power Plan:** Electrical Room 1515 incorrectly references E-502 within the enclosed detail 2/E-451 for continuation of receptacle power; E-502 does not exist. Please amend reference to 2/E-451

CM Response: An updated sheet E-211A to be included in next addendum 3 has the updated reference for Elec 1515

Scope Inquiry: **Alternate #15: Preferred Brand Light Fixtures has been deleted**

CM Response: Electrical EOR failed to provide alternate fixtures to comply with this alternate; therefore, Alternate #15 cannot be bid as intended and has subsequently been removed from the Bid Form and BP-2600 Bid Scope

Item 27: **BP-2813 Security and Access Controls**

Scope Inquiry: **Product Substitution: Access Control Software & Database Management 281300-2.1.A - AMAG Symmetry**

CM Response: No exception taken

Scope Inquiry: **Product Substitution: Access Control Software & Database Management 281300-2.1.A - Schneider Electric Access Expert**

CM Response: No exception taken

Item 28: **BP-3100 Sitework**

Scope Inquiry: **Fire Pump Enclosure:** Floor Drain required

CM Response: Install 4" Sch 40 PVC pipe from fire pump house to nearby swale

Scope Inquiry: **New Alternate #16: Hobbton Highway Widening**

CM Response: Updated Bid Form and BP-3100 Sitework bid package are attached
Refer to attachment within this Clarification for proposed limits of work

Item 29: **BP-3220 Geothermal Well Drilling & BP-2300 HVAC**

Scope Inquiry: **Flushing and treatment of geothermal piping systems**

CM Response: BP-3220 and BP-2300 are each responsible for all testing, flushing, and water treatment of their piping system

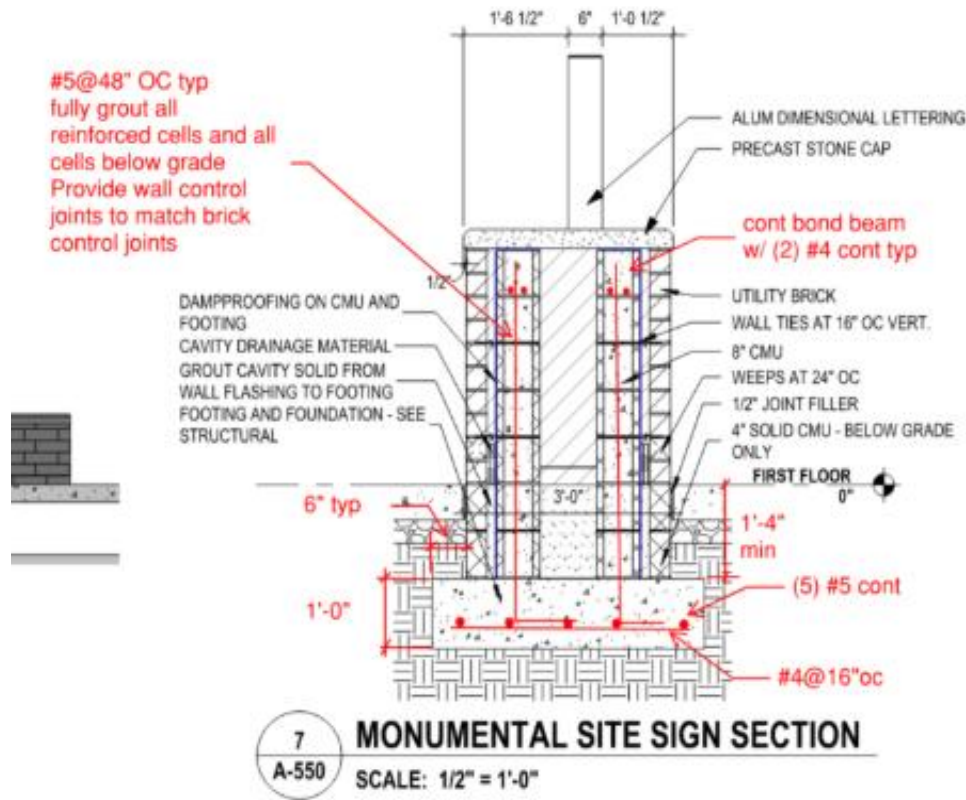
End of CM Clarification No. 3

BP-0300 Concrete & BP-0400 Masonry

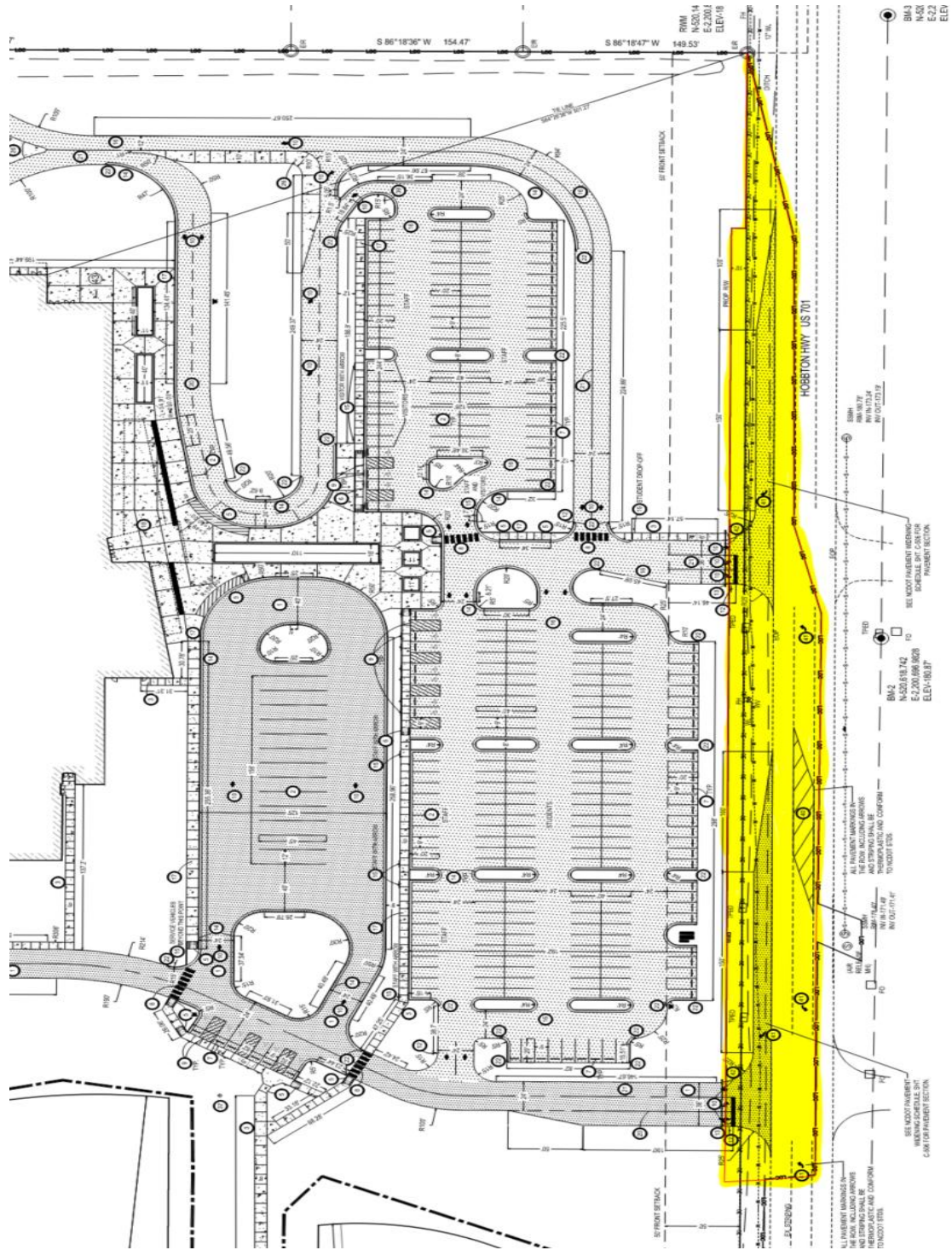
Scope Inquiry: Monumental Site Sign and Site Wall

Details 7,8 & 9/A-550 reference structural drawings for reinforcing requirements; this information could not be found. Please provide

CM Response: Refer to detail below



Alternate #16: Hobbs Highway Widening



FORM OF PROPOSAL

Project: Hobbton High School Replacement
12201 Hobbton Highway, Newton Grove, NC 28336

Bid Submitted To: TA Loving – Construction Manager
3600 Glenwood Avenue, Suite 150, Raleigh, NC 27612

Bidder Name _____

Bid Package _____

Bid Date _____

The undersigned, as Bidder, hereby declares that the only person or persons interested in this proposal as principal or principals is or are named herein and that no other person than herein mentioned has any interest in this proposal or in the contract to be entered into; that this proposal is made without connection with any other person, company or parties making a bid or proposal; and that it is in all respects fair and in good faith without collusion or fraud. Bidder further declares that it has examined the site of the work and the contract documents relative thereto, has read all special provisions furnished prior to the opening of bids, and that Bidder has satisfied itself relative to the work to be performed. Bidder further declares it, and its subcontractors have fully complied with NCGS 64, Article 2 in regard to E-Verification as required by NC General Statute 143-129(j).

Bidder proposes and agrees, if this proposal is accepted, to contract with Construction Manager in the form of contract specified in the Bid Manual to furnish all necessary materials, equipment, machinery, tools, apparatus, means of transportation, labor, supervision and other items necessary to complete the construction of the above referenced Bid Package in full, in complete accordance with the plans, specifications and contract documents, within the contract time, to the full and entire satisfaction of Owner and Construction Manager with a definite understanding that no money will be allowed for extra work except as set forth in the General Conditions and the Contract Documents.

Stated sums are inclusive of all fees, insurances, taxes (payroll, sales, and use, etc.) and all charges that may be levied against this bid package.

Bidder, if awarded a subcontract, agrees to commence work on a date to be specified by Construction Manager and to fully complete and deliver this Work Category in accordance with the schedule prepared by Construction Manager.

BASE BID PRICE

The Base Bid Price includes all Work, inclusive of all applicable allowances, required by and in strict accordance with the Bid Documents for this Bid Package, for the Lump Sum of:

\$ _____ (\$ _____)
(Written) (Figures)

Payment & Performance Bond cost, if required, add \$ _____ (Figures only)

ALTERNATES

Should any alternate, as described in the contract documents, be accepted, the amount written below shall be the amount to be "added to" the base bid. Alternate price should include all cost of overhead and profit. Construction Manager and Owner expressly reserve the right to accept or reject any or all Alternate Prices in any sequence. Acceptance or rejection of alternates shall not change the contract duration nor relieve the Bidder of timely completion of work within the time periods indicated in the contract documents.

Alternate #6 is not bid; #11 revised; #15 deleted, and #16 added per CMC-03

Alternate #01—Construct Football Field and Track

Bid Packages: **BP-0175, 0790, 1168, 2600, 3100, 3231 & 3290**

Base Bid: Provide grassed field with site utility infrastructure for future ball field as outlined in the project documents and in respective bid packages

Alternate: Provide grading, athletic track surfaces, athletic equipment (goals, scoreboard, team benches, discus protective netting, field markings, scorer's table, etc.), electrical (power distribution, field lighting, etc.), site concrete, fences & gates, sod & irrigation, etc. to construct a complete sports field as outlined in the project documents and in respective bid packages.

Indicate the net cost difference to provide Alternate #01 scope:

(Add) _____ Dollars (\$) (figures only)

Alternate #02—Grandstands and Press Box

Bid Packages: **BP-0175, 0300, 0790, 1168, 2600, 2700, 3100 & 3290**

Base Bid: Provide grassed area for future Grandstand and Press Box

Alternate: Provide grading, concrete foundations, grandstands, and press box, electrical, communications, site concrete, sod & seed, etc. to construct a complete Grandstands and Press Box as outlined in the project documents and in respective bid packages

Indicate the net cost difference to provide Alternate #02 scope:

(Add) _____ Dollars (\$) (figures only)

Alternate #03—Construct Concession Stand & Restrooms

Bid Packages: **BP-0175, 0300, 0400, 0500, 0600, 0700, 0720, 0790, 0800, 0834, 0925, 0960, 0964, 0990, 1000, 1014, 2200, 2300, 2305, 2600, 2700, 2813, 3100, 3231 & 3290**

Base Bid: Provide grassed area with site utility infrastructure for future Concession Stand and Restrooms as outlined in the project documents and in respective bid packages

Alternate: Provide trade specific requirements as outlined in the project documents and in respective bid packages to construct a complete Concession Stand and Restroom building.

Indicate the net cost difference to provide Alternate #03 scope:

(Add) _____ Dollars (\$) (figures only)

Alternate #04—Construct Baseball Field

- Bid Packages: **BP-0175, 0300, 0400, 0700, 0790, 0800, 0990, 1168, 2600, 2700, 3100, 3231 & 3290**
Base Bid: Provide grassed field with site utility infrastructure for future ball field as outlined in the project documents and in respective bid packages
Alternate: Provide grading, concrete, dugouts, athletic field surfaces, athletic equipment (scoreboard, dugout benches, bleachers, field markings, scorer's table, foul poles, bases, etc.), electrical (power distribution, field lighting, etc.), communications, site concrete, fences & gates, sod & irrigation, etc. to construct a complete baseball field as outlined in the project documents and in respective bid packages

Indicate the net cost difference to provide Alternate #04 scope:

(Add) _____ Dollars (\$) (figures only)

Alternate #05—Construct Softball Field

- Bid Packages: **BP-0175, 0300, 0400, 0700, 0790, 0800, 0990, 1168, 2600, 2700, 3100, 3231 & 3290**
Base Bid: Provide grassed field with site utility infrastructure for future ball field as outlined in the project documents and in respective bid packages
Alternate: Provide grading, concrete, dugouts, athletic field surfaces, athletic equipment (scoreboard, dugout benches, bleachers, field markings, scorer's table, foul poles, bases, etc.), electrical (power distribution, field lighting, etc.), communications, site concrete, fences & gates, sod & irrigation, etc. to construct a complete softball field as outlined in the project documents and in respective bid packages

Indicate the net cost difference to provide Alternate #05 scope:

(Add) _____ Dollars (\$) (figures only)

Alternate #07—Provide Mechanical Heat Pumps Complying with Domestic Content

- Bid Package: **BP-2300**
Base Bid: Provide mechanical heat pumps as scheduled
Alternate: Provide mechanical heat pumps as scheduled that will satisfy the domestic content requirements. Include all requirements outlined within this bid package.

If there is no cost difference between Base Bid and Alternate, then Alternate #07 bid shall be "No Change"; otherwise, indicate the net cost difference to provide Alternate scope requirements:

(Add) _____ Dollars (\$) (figures only)

Alternate #08—Preferred Brand – BAS Controls System--Honeywell

- Bid Package: **BP-2300**
Base Bid: Provide a complete BAS controls system installation as required to support the project
Alternate: Provide a complete BAS controls system installation as required to support the project using **Honeywell Controls** as the controls system manufacturer.
Include all requirements outlined within this bid package

If there is no cost difference between Base Bid and Alternate, then Alternate #08 bid shall be "No Change"; otherwise, indicate the net cost difference to provide Alternate scope requirements

(Add) _____ Dollars (\$) (figures only)

Alternate #10—Provide R-50 Roof Insulation

Bid Packages: **BP-0400, 0700, 0720, 0750, 0790 & 0925**

Base Bid: Construct walls and roof system as indicated on project documents

Alternate: Install R-50 roof insulation ILO R-30 insulation
Increase wall height to accommodate additional roof insulation thickness

If there is no cost difference between Base Bid and Alternate, then Alternate #10 bid shall be “No Change”; otherwise, indicate the net cost difference to provide Alternate scope requirements:

(Add) _____ Dollars (\$) (figures only)

Alternate #11— Preferred Brand– Door Access Hardware

Bid Packages: **BP-0800, 0840 & 2813**

Base Bid: Provide door access hardware as scheduled to support the project

Alternate: Provide Assa Abloy access hardware, Schlage Locks, Von Duprin Exit Devices, and LCN door closers to support the project

If there is no cost difference between Base Bid and Alternate, then Alternate #11 bid shall be “No Change”; otherwise, indicate the net cost difference to provide Alternate scope requirements:

(Add) _____ Dollars (\$) (figures only)

Alternate #14— Upgrade selected floor areas to Resin Matrix Terrazzo Flooring

Bid Packages: **BP-0300, 0960, 0963 & 0990**

Base Bid: Provide floor finishes and base as indicated on Finish Plans and Schedule

Alternate: Provide terrazzo flooring and integral base in selected areas in lieu of base bid finishes
Field and accent colors and patterns to be same as indicated on Finish Plans & Schedule

Indicate the net cost difference to provide Alternate #14 scope:

(Add / Deduct) _____ Dollars (\$) (figures only)

Alternate #16—Hobpton Highway Widening

Bid Packages: **BP-3100**

Base Bid: Not In Scope

Alternate: Construct the proposed road widening as outlined in the construction documents

Indicate the net cost difference to provide Alternate scope requirements:

(Add) _____ Dollars (\$) (figures only)

ALLOWANCES and UNIT PRICES

Allowances should include all cost of work, overhead and profit to make a complete installation and shall be based upon indicated Quantities and Unit Prices, unless otherwise noted. Use of any allowance shall be as directed by Construction Manager. Any unused portion of an allowance will be credited in full against the Contract amount.

Unit prices quoted and accepted shall apply throughout the life of the contract, except as otherwise specifically noted. Unit prices shall be applied, as appropriate, to compute the total value of changes in the base bid quantity of the work

all in accordance with the contract documents. Construction Manager reserves the right to reject, negotiate or accept all unit prices prior to contract award.

Base Bid Price shall include all applicable listed allowances and unit prices:

BP-0150 General Trades:

- 1. Skilled Labor rate \$ _____/hour
- 2. Non-skilled Labor rate \$ _____/hour

BP-0300 Concrete:

- 1. Unsuitable soils (Trench) remove & dispose **OFF-SITE** 50 CY @ \$ _____/CY = \$ _____.
- 2. Replacement of unsuitable soils (Trench), select import fill 25 CY @ \$ _____/CY = \$ _____.
- 3. Replacement of unsuitable soils (Trench) with #57 stone 25 CY @ \$ _____/CY = \$ _____.
- 4. Crushed Stone (NCDOT ABC) 50 CY @ \$ _____/CY = \$ _____.

BP-0400 Masonry:

- 1. Remove & Restore CMU per unit face 100 Each @ \$ _____/EA = \$ _____.

BP-0800 Doors & Hardware:

- 1. HM door & frame repair work 80 hours @ \$ _____/Hour = \$ _____.

BP-0925 Drywall Assemblies:

- 1. GWB patch & repair 500 hours @ \$ _____/Hour = \$ _____.
- 2. Access Doors & frames 10 Each @ \$ _____/EA = \$ _____.

BP-0960 Soft Flooring:

- 1. Floor Moisture Mitigation 41,150 SF @ \$ _____/SF = \$ _____.

BP-0980 Acoustic Ceilings & Treatments:

- 1. Acoustic ceiling assembly repairs 500 hours @ \$ _____/Hour = \$ _____.

BP-0990 Painting:

- 1. Additional painting 320 hours @ \$ _____/Hour = \$ _____.

BP-1400 Elevators:

- 1. Manual operation of elevator prior to completion 80 hours @ \$ _____/Hour = \$ _____.

BP-2100 Fire Suppression:

- 1. Install additional sprinkler heads 5 Each @ \$ _____/EA = \$ _____.

BP-2200 Plumbing:

- 1. Unsuitable soils (Trench) remove & dispose **OFF-SITE** 25 CY @ \$ _____/CY = \$ _____.
- 2. Replacement of unsuitable soils (Trench), select import fill 25 CY @ \$ _____/CY = \$ _____.
- 3. Replacement of unsuitable soils (Trench) with #57 stone 25 CY @ \$ _____/CY = \$ _____.

BP-2600 Electrical:

1. Unsuitable soils (Trench) remove & dispose OFF-SITE	100 CY @ \$ _____/CY = \$ _____.
2. Replacement of unsuitable soils (Trench), select import fill	100 CY @ \$ _____/CY = \$ _____.
3. Replacement of unsuitable soils (Trench) with #57 stone	100 CY @ \$ _____/CY = \$ _____.
4. FA Smoke Detector, rough-in only	5 Each @ \$ _____/EA = \$ _____.
5. FA Horn Strobes, rough-in only	5 Each @ \$ _____/EA = \$ _____.
6. FA Pull Stations, rough-in only	5 Each @ \$ _____/EA = \$ _____.
7. Two-Port Data drop, rough-in only	5 Each @ \$ _____/EA = \$ _____.
8. Exit Lights	5 Each @ \$ _____/EA = \$ _____.
9. Duplex power	5 Each @ \$ _____/EA = \$ _____.
10. Additional PVC sleeves	200 LF @ \$ _____/LF = \$ _____.
11. Foodservice equipment electrical changes allowance	Lump Sum \$ <u>5,000</u>
12. RF-BDA System allowance	Lump Sum \$ <u>150,000</u>

BP-2700 Communications:

1. Two-Port Data drop, device completion	5 Each @ \$ _____/EA = \$ _____.
--	----------------------------------

BP-2831 Fire Alarm:

1. FA Smoke Detector, device completion	5 Each @ \$ _____/EA = \$ _____.
2. FA Horn Strobe, device completion	5 Each @ \$ _____/EA = \$ _____.
3. FA Pull Station, device completion	5 Each @ \$ _____/EA = \$ _____.

BP-3100 Sitework:

1. Unsuitable soils (Mass) remove & dispose ON-SITE	4,000 CY @ \$ _____/CY = \$ _____.
2. Unsuitable soils (Mass) remove & dispose OFF-SITE	2,000 CY @ \$ _____/CY = \$ _____.
3. Unsuitable soils (Trench) remove & dispose OFF-SITE	250 CY @ \$ _____/CY = \$ _____.
4. Unsuitable soils (Trench) remove & dispose ON-SITE	250 CY @ \$ _____/CY = \$ _____.
5. Replacement of unsuitable soils (Mass), select import fill	4,000 CY @ \$ _____/CY = \$ _____.
6. Replacement of unsuitable soils (Mass) with ON-SITE Fill	2,000 CY @ \$ _____/CY = \$ _____.
7. Replacement of unsuitable soils (Mass) with ABC stone	2,000 CY @ \$ _____/CY = \$ _____.
8. Replacement of unsuitable soils (Mass), asphalt binder	100 CY @ \$ _____/CY = \$ _____.
9. Replacement of unsuitable soils (Trench), ON-SITE Fill	1,000 CY @ \$ _____/CY = \$ _____.
10. Replacement of unsuitable soils (Trench), select import fill	250 CY @ \$ _____/CY = \$ _____.
11. Replacement of unsuitable soils (Trench) with #57 stone	250 CY @ \$ _____/CY = \$ _____.
12. Dispose trades waste soils; provide ON-SITE soils	400 CY @ \$ _____/CY = \$ _____.
13. Biaxial Geogrid	500 SY @ \$ _____/SY = \$ _____.
14. Woven Geotextile Fabric	1,000 SY @ \$ _____/SY = \$ _____.

15. Asphalt patch & repair (full-depth asphalt)	200 CY @ \$ _____/CY = \$ _____.
16. Remove & replace 24" Curb & Gutter	100 LF @ \$ _____/LF = \$ _____.
17. Remove & replace sidewalk	100 SF @ \$ _____/SF = \$ _____.
18. Furnish & Install 6" steel pipe bollards, complete	5 Each @ \$ _____/EA = \$ _____.
19. High Capacity French Drain	2,000 LF @ \$ _____/LF = \$ _____.
20. Replacement of stone drives allowance	Lump Sum \$ <u>75,000</u>

BP-3220 Geothermal Well Drilling:

1. Unsuitable soils (Trench) remove & dispose OFF-SITE	100 CY @ \$ _____/CY = \$ _____.
2. Replacement of unsuitable soils (Trench), select import fill	100 CY @ \$ _____/CY = \$ _____.
3. Replacement of unsuitable soils (Trench) with #57 stone	100 CY @ \$ _____/CY = \$ _____.

MINORITY BUSINESS PARTICIPATION REQUIREMENTS

Provide with the bid - Under GS 143-128.2(c) the undersigned bidder shall identify **on its bid** (Identification of Minority Business Participation Form) the minority businesses that it will use on the project with the total dollar value of the bids that will be performed by the minority businesses. **Also** list the good faith efforts (Affidavit **A**) made to solicit minority participation in the bid effort.

NOTE: A contractor that performs all of the work with its own workforce may submit an Affidavit **B** to that effect in lieu of Affidavit **A** required above. The MB Participation Form must still be submitted even if there is zero participation.

After the bid opening – Construction Manager will consider all bids and alternates and determine the lowest responsible, responsive bidder. Upon notification of being the apparent low bidder, Bidder shall then file within 72 hours of the notification of being the apparent lowest bidder, the following:

Affidavit **C** that includes a description of the portion of work to be executed by minority businesses, expressed as a percentage of the total contract price, which is **equal to or more than the 10% goal** established. This affidavit shall give rise to the presumption that Bidder has made the required good faith effort, and Affidavit **D** is not necessary;

*** OR ***

Affidavit **D** that includes a description of the portion of work to be executed by minority businesses, expressed as a percentage of the total contract price, which is **less than the 10% goal** established, with documentation of its Good Faith Effort to meet the goal shall be provided. Documentation must include evidence of all good faith efforts that were implemented including advertisements, solicitations and other specific actions demonstrating recruitment and selection of minority businesses for participation in the contract.

Note: Bidders must always submit **with their bid** the Identification of Minority Business Participation Form listing all MB contractors, vendors and suppliers that will be used. If there is no MB participation, then enter none or zero on the form. Affidavit **A** or Affidavit **B**, as applicable, must also be submitted with the bid. Failure to file a required affidavit or documentation with the bid or after being notified apparent low bidder is grounds for rejection of the bid.

On behalf of _____, of which I am duly authorized to execute this instrument, I,
Name of Subcontractor
_____, do hereby affirm and bind _____ to the following:
Name & Title of Authorized Individual Name of Subcontractor

1. We have received and reviewed each drawing, of each and every volume of drawings, distributed by Construction Manager (CM), and acknowledge that there may be notes, details, or other information on those drawings that have influenced our bid; no matter if the drawing, in its entirety, pertains to the bid package included in our bid.
All costs associated with those notes, details, or other information are included in our bid _____ (initials)
2. We have received and reviewed each specification section, of each and every volume of specifications, distributed by the CM, and acknowledge that there may be notes, details, or other information in those specification sections that have influenced our bid; no matter if the specification section, in its entirety, pertains to the bid package included in our bid.
All costs associated with those notes, details, or other information are included in our bid _____ (initials)
3. We have received and reviewed Construction Manager's Bid Manual, read it from cover to cover, and fully understand the bid package we are bidding on, in addition to any and all other requirements outlined in the Bid Manual _____ (initials)
4. We have received and reviewed each and every Addendum and CM Clarification distributed by CM, including all documents attached thereto, including revisions to the drawings, details, and specifications and Bid Manual.
All costs associated with those Addenda and CM Clarifications are included in our bid. _____ (initials)
5. We have included **only** material, equipment, and other requirements as specified and detailed in the Contract Documents in our bid. **No** unapproved substitutions of material, equipment, or modifications of other requirements have been included _____ (initials)
6. We have asked and received answers to any pre-bid questions that would influence our bid price or our ability to perform the work with regard to the bid package we are submitting a proposal on. _____ (initials)
7. We understand the purpose of scope review meetings is to determine completeness and responsiveness of the submitted bid, to discuss acceptance or rejection of bid alternates, to review bid allowances and unit prices, to discuss value engineering (cost reduction) options, availability of personnel, materials and equipment and their impact on the schedule, list of proposed subcontractors and vendors, and to review the bid proposal's detailed cost breakdown. _____ (initials)
8. We fully understand the scope and scale of the project as a whole and the scope of our bid package included in our bid. We further acknowledge that the means and methods necessary to complete our scope of work are our own. We have also reviewed the preliminary project schedule included in the Bid Manual and will have sufficient manpower to complete this scope of work. _____ (initials)
9. We agree that this Base Bid Proposal shall be valid and may not be withdrawn for a period of Ninety (90) calendar days after the opening date of this bid package. _____ (initials)
10. We fully understand that our pricing is firm, not subject to escalation, for the duration of the project _____ (initials)
11. We fully understand that Construction Manager, Designer, and Owner reserve the right to reject any or all Bid Proposals and to waive any informalities or irregularities therein.

The foregoing terms have been reviewed and are accepted; we acknowledge that acceptance of these terms is required with the bid proposal and that this executed exhibit will be included as a binding attachment to any subcontract agreement entered into between Subcontractor and Construction Manager.

BY: _____
Name & Title of Authorized Individual

Proposal Signature Page

Bidder further agrees that in the case of failure on its part to execute the subcontract agreement and deliver any required bonds within ten (10) consecutive calendar days after being given written notice of the award of contract, the bid surety accompanying this bid proposal shall be paid into the funds of the Construction Manager's account set aside for the project, as liquidated damages for such failure; otherwise the certified check, cash or bid bond accompanying this proposal shall be returned to the undersigned.

Respectfully submitted this,

_____ Day of _____, _____
(Write the Date of the Month) (Write the Current Month & Year)

(Name of firm or corporation making bid)

WITNESS:

By: _____
(Print Name of Person Signing Bid)

(Witness Signs here if a Proprietorship or Partnership)

(Signature)

ATTEST:

Title: _____
(Owner, Partner, President, or Vice .President)

By: _____

Title: _____
(Corporate Secretary or Assistant Secretary only)

Address: _____

(CORPORATE SEAL)

License: _____

Federal ID No. _____

Email: _____

Addenda received and used in computing bid. Failure to acknowledge receipt of addenda may result in bid being considered non-responsive: (Initial each as applicable)

Addendum No. 1 _____ Addendum No. 2 _____ Addendum No. 3 _____ Addendum No. 4 _____
Addendum No. 5 _____ Addendum No. 6 _____ Addendum No. 7 _____ Addendum No. 8 _____

Construction Manager Clarifications received and used in computing bid. Failure to acknowledge receipt of clarifications may result in bid being considered non-responsive: (Initial each as applicable)

Clarification No. 1 _____ Clarification No. 2 _____ Clarification No. 3 _____ Clarification No. 4 _____
Clarification No. 5 _____ Clarification No. 6 _____ Clarification No. 7 _____ Clarification No. 8 _____

Subcontractor Scope of Work
Exhibit A

Hobbs High School Replacement
Job No. 25213

BP-1161 Theater & Stage Equipment

This bid package is complementary to the Contract Documents (drawings, specifications, addenda, CM clarifications, and Bid Manual), is not intended to restrict or alter the intent of the Contract Documents and does not limit Subcontractor's responsibilities in providing all scope requirements of the Contract Documents. Subcontractor acknowledges this Scope of Work does not describe the full and complete work requirements of the project. Enumeration of specification sections herein is for the convenience of Construction Manager and Subcontractor.

Subcontractor shall pursue and execute all work described in the Contract Documents to include, but not limited to, providing all labor, materials, equipment, layout, engineering, scaffolding, tools, supplies, services, material and equipment handling (rigging, craning, hoisting, staging), temporary protection of own work, coordination of own work and interaction of work of others, home office and field administration, project management, scheduling, field supervision, quality control, safety, taxes (payroll, state, local, sales & use), insurances, permits, submittals, punch list, closeout documentation, and all other items necessary or reasonably incidental for the construction and completion of the work as portrayed herein:

SUBCONTRACTOR'S WORK SPECIFICALLY INCLUDES:

Division 00 – Procurement and Contracting Requirements

Project Bid Manual dated 4/13/2026

Division 01 – General Requirements

Division 11 – Equipment

Section 116143 Stage Curtains

Division 12 – Furnishings

Section 122213 Draperies

All related Sections/requirements referenced within each Division and/or Section

SUBCONTRACTOR SPECIFIC REQUIREMENTS: AMENDED PER CMC-03

1. Project will utilize Building Information Modeling to facilitate the preparation of coordinated shop drawings. BIM modeling is **not** a requirement of this bid package; however, participation in BIM coordination meetings as required for the purpose of coordination with other trades is a requirement. Provide necessary **CAD files** and detailed rough-in drawings.
2. Furnish all labor, materials, equipment, anchors, fasteners, caulking, sealants, and other accessories as required to make a complete installation of specified **Theater & Stage Equipment** requirements:
 - a. Stage curtains
 - i. Include all track, batten, and rigging requirements
 - b. Performance Rigging
 - c. Performance Lighting
 - d. Performance Sound

- e. Miscellaneous requirements:
 - i. Include all **delegated-design** requirements for rigging and structural attachments of systems provided under this bid scope
 - 1. Provide design, calculations, engineered sealed drawings, submittals, etc.
 - 2. Design to be stamped & sealed by a Professional Engineer licensed in NC
 - 3. Provide Professional Engineer insurance certificate. PE insurance must meet Exhibit C requirements
 - ii. Remove all non-permanent stickers, labels, tags, etc. at time of installation
 - iii. Include all shipping & transportation FOB job-site
 - iv. Curtains are to be left clean, fully retracted, and encased in plastic covering; this will be considered adequate “protection of work”
- 3. Furnish all labor, materials, equipment, anchors, fasteners, trims, caulking, accessories, etc. to make a complete installation of the specified **window drapery** requirements:
 - a. Provide colors as specified from manufacturer’s full line, no upcharge for colors within full line will be considered
 - b. Complete motorized operating system
 - i. Include low voltage wiring and cabling between voltage transformer and shade motor and control wiring and cabling between motor and wall switch
 - ii. Conduits, boxes, covers, and pull strings for transformer, motors, and wall switches by BP-2600; power to transformer by BP-2600
 - iii. Wireless control devices as required
 - iv. Provide shop drawings at an early stage of the project to allow for coordination of rough-in locations for power supplies
 - i. Coordination of power supply and low voltage work with BP-2600 Electrical is a responsibility under this scope of work
 - c. Coordinate in-wall blocking requirements
 - d. Include all associated cost to mount window treatments to masonry or drywall as direct-mounting to aluminum frames may not be permitted
 - e. Remove all non-permanent stickers, labels, tags, etc. at time of installation
 - f. Draperies are to be left clean and fully retracted, and encased in plastic covering; this will be considered adequate “protection of work”
- 4. Inspect all conditions for suitability to receive work under this scope prior to starting work
 - a. Advise Construction Manager immediately in writing of any deficiencies or issues
 - b. Commencement of work guarantees acceptance of conditions
- 5. Daily cleanup of work areas and removal of debris to dumpster
- 6. Include all necessary crews and equipment as required to facilitate construction progress
- 7. Pricing firm, not subject to escalation for duration of project

SPECIFIC EXCLUSIONS

Not Applicable

ALLOWANCES & UNIT PRICES

Not Applicable

ALTERNATES

Not Applicable

Subcontractor Scope of Work
Exhibit A

Hobpton High School Replacement
Job No. 25213

BP-1220 - Window Treatments

This bid package is complementary to the Contract Documents (drawings, specifications, addenda, CM clarifications, and Bid Manual), is not intended to restrict or alter the intent of the Contract Documents and does not limit Subcontractor's responsibilities in providing all scope requirements of the Contract Documents. Subcontractor acknowledges this Scope of Work does not describe the full and complete work requirements of the project. Enumeration of specification sections herein is for the convenience of Construction Manager and Subcontractor.

Subcontractor shall pursue and execute all work described in the Contract Documents to include, but not limited to, providing all labor, materials, equipment, layout, engineering, scaffolding, tools, supplies, services, material and equipment handling (rigging, craning, hoisting, staging), temporary protection of own work, coordination of own work and interaction of work of others, home office and field administration, project management, scheduling, field supervision, quality control, safety, taxes (payroll, state, local, sales & use), insurances, permits, submittals, punch list, closeout documentation, and all other items necessary or reasonably incidental for the construction and completion of the work as portrayed herein:

SUBCONTRACTOR'S WORK SPECIFICALLY INCLUDES:

- Division 00 – Procurement and Contracting Requirements
 - Project Bid Manual dated 4/13/2026
- Division 01 – General Requirements
- Division 12 – Furnishings
 - Section 122413 Roller Window Shades
- All related Sections/requirements referenced within each Division and/or Section

SUBCONTRACTOR SPECIFIC REQUIREMENTS: **AMENDED PER CMC-03**

1. Furnish all labor, materials, equipment, anchors, fasteners, trims, caulking, accessories, etc. to make a complete installation of the specified **window roller shade** requirements:
 - a. Provide colors as specified from manufacturer's full line, no upcharge for colors within full line will be considered
 - b. Complete motorized operating system
 - i. Include low voltage wiring and cabling between voltage transformer and shade motor and control wiring and cabling between motor and wall switch
 - ii. Conduits, boxes, covers, and pull strings for transformer, motors, and wall switches by BP-2600; power to transformer by BP-2600
 - iii. Wireless control devices as required
 - iv. Provide shop drawings at an early stage of the project to allow for coordination of rough-in locations for power supplies

- i. Coordination of power supply and low voltage work with BP-2600 Electrical is a responsibility under this scope of work
 - c. Coordinate in-wall blocking requirements
 - d. Include all associated cost to mount window treatments to masonry or drywall as direct-mounting to aluminum frames may not be permitted
 - e. Include participation in mock-ups
 - f. Remove all non-permanent stickers, labels, tags, etc. at time of installation
 - g. Window shades are to be left clean and fully retracted, and draperies encased in plastic covering; this will be considered adequate "protection of work"
- 2. Inspect all conditions for suitability to receive work under this scope prior to starting work
 - a. Advise Construction Manager immediately in writing of any deficiencies or issue
 - b. Commencement of work guarantees acceptance of conditions
- 3. Daily cleanup of work areas and removal of debris to dumpster
- 4. Include field measure of all work in this bid scope prior to fabrication
- 5. Pricing is firm, not subject to escalation for duration of project

SPECIFIC EXCLUSIONS

- 1. Draperies by BP-1161

ALLOWANCES & UNIT PRICES

Not Applicable

ALTERNATES

Not Applicable

Subcontractor Scope of Work
Exhibit A

Hobbs High School Replacement
Job No. 25213

BP-3100 – Sitework

This bid package is complementary to the Contract Documents (drawings, specifications, addenda, CM clarifications, and Bid Manual), is not intended to restrict or alter the intent of the Contract Documents and does not limit Subcontractor's responsibilities in providing all scope requirements of the Contract Documents. Subcontractor acknowledges this Scope of Work does not describe the full and complete work requirements of the project. Enumeration of specification sections herein is for the convenience of Construction Manager and Subcontractor.

Subcontractor shall pursue and execute all work described in the Contract Documents to include, but not limited to, providing all labor, materials, equipment, layout, engineering, scaffolding, tools, supplies, services, material and equipment handling (rigging, craning, hoisting, staging), temporary protection of own work, coordination of own work and interaction of work of others, home office and field administration, project management, scheduling, field supervision, quality control, safety, taxes (payroll, state, local, sales & use), insurances, permits, submittals, punch list, closeout documentation, and all other items necessary or reasonably incidental for the construction and completion of the work as portrayed herein:

SUBCONTRACTOR'S WORK SPECIFICALLY INCLUDES:

Division 00 – Procurement and Contracting Requirements

Project Bid Manual dated 5/11/2026

Division 01 – General Requirements

Division 02 – Existing Conditions

Section 024116 Structure Demolition (as it applies to this scope)

Division 03 – Concrete (as it applies to this scope)

Division 10 – Specialties

Section 107500 Flagpoles

Division 22 – Plumbing (as it applies to this scope)

Division 26 – Electrical (as it applies to this scope)

Division 31 – Earthwork

Complete Division with exception of:

Section 313116 Termite Control

Section 316613 Rammed Aggregate Piers or Stone Columns

Division 32 – Exterior Improvements

Complete Division with exception of:

Section 323113 Chain Link Fences & Gates (excluded from scope)

Section 329000 Landscaping (excluded from scope)

Division 33 – Utilities

Complete Division with exception of:

Section 331613 Ground-Supported Flat-Bottom Water Storage Tank

All Related Sections/Requirements referenced within each Division and/or section

SUBCONTRACTOR SPECIFIC REQUIREMENTS:

1. This project will utilize Building Information Modeling (BIM) to facilitate the preparation of coordinated shop drawings. BIM modeling is **not** a requirement of this bid package; however, participation in BIM coordination meetings as required for the purpose of coordination of site utilities with other trades is a requirement.
2. The following is a general outline of the **Sitework** requirements specifically included, but not limited to:
 - a. Complete **Project Surveying** requirements
 - i. Include surveying and staking:
 1. Establish a minimum of three new permanent benchmarks
 - a. Include removal and reset of existing benchmarks as necessary
 - b. Provide X, Y & Z information for each benchmark
 2. Survey and establish Limits of Construction/Disturbance
 3. Survey and establish benchmarks and control lines for building
 4. Survey and establish building corners (10' offset)
 5. **Establish two vertical control interior benchmarks for each building floor**
 - ii. Include Final Surveys:
 1. As-built survey of all site utilities
 2. Final Property Survey
 - iii. Surveyor shall be registered in the State of North Carolina
 - iv. Coordinate and Schedule work at the direction of Construction Manager
 - v. Notify Construction Manager immediately in writing of all discrepancies
 - vi. Layout for landscape plantings, geothermal wells, and aggregate piers by others
 - vii. Final As-Built Surveys for geothermal wells and aggregate piers by others
 - b. **Construction Layout** requirements
 - i. Provide all construction layout and staking required to complete this bid scope
 - ii. Subcontractor shall be responsible for any required remedial work due to its work being installed incorrectly
 - c. **Temporary Construction** requirements
 - i. Furnish & install temporary construction fence and access gates as indicated on Site Logistics Plan
 1. Provide screening along road frontage with three separate logos
 2. Install temporary fence on pavements using non-destructive means unless otherwise directed by Construction Manager
 3. Remove temporary fence when directed by Construction Manager
 - ii. Furnish & install temporary roads, laydown and parking areas, crane pads, and construction trailer area as indicated on Site Logistics Plan
 - d. Complete **Site Demolition** requirements
 - i. Remove all site improvements as indicated on drawings
 - ii. Legally dispose off-site all items removed or demolished as part of this scope
 - iii. Terminate and remove all site utilities as noted on drawings; coordinate with utility companies as necessary
 - iv. Include saw cut and square pavements, sidewalks, and curbs as necessary
 - v. Remove all underground tanks and vaults, when encountered
 1. Pump, clean, and make safe prior to demo

2. Soil remediation is **not** included
- e. Complete **Earthwork** requirements
 - i. Tree-protection fence
 - ii. Clearing & grubbing
 - iii. Site Grading
 - iv. Screened topsoil & fine grading of topsoil
 - v. All erosion control measures and required maintenance thereof
 1. Provide a wash station at each project entrance
 2. Include conversion of E&SC measures to permanent condition
 3. Include removal and off-site disposal of sediment deposits collected during construction
 4. Include temporary inlet protection
 5. Include monitoring and reporting requirements
 - vi. Remove waste spoils generated by rammed aggregate piers and concrete foundations; anticipate **1500 CY**
 - f. Complete **Storm and Roof Drainage systems** requirements
 - i. Storm drainage piping, structures, and accessories
 1. Connect to and extend elevator pit wall drainage pipe
 2. Connect to and extend elevator sump pit drainage pipe
 3. Install and extend dock wall foundation drainage pipe
 4. Include dock well trench drain & outfall pipe
 - ii. Roof drainage collection system
 1. Connect to building roof drainage stub-outs at 5' outside of building
 2. Connect to canopy roof drainage at downspouts and columns
 3. Connect to building roof drainage gutters at downspouts
 4. Include cleanouts at all roof drainage connections
 5. Final connections are the responsibility of this bid scope
 6. Include cast iron downspout boots
 - iii. Rip Rap & geotextile fabric
 - iv. Bedding materials as required
 - v. Provide concrete aprons & rings at cleanouts, valve boxes, inlets, etc.
 - g. Complete **Exterior Improvements** requirements
 - i. Asphalt pavements
 1. Light-duty and Heavy-duty mix designs
 2. Asphalt patching for site utilities as required
 - a. Saw cut and square pavements as required
 - ii. Aggregate Base Course
 - iii. Striping, Markings and Signage
 1. Vehicular signage and pavement markings
 2. Concrete wheel stops
 3. Traffic-calming devices (bumps, humps, domes, etc.) as required
 - iv. Site Concrete
 1. Loading Dock Ramp pavement
 - a. Dock walls and foundations by BP-0300
 2. Pavements **& monolithic SOG** for dumpster area **(per CMC-03)**

3. Curbing (curb & gutter, edge curbs, median curbs, aprons, etc.)
4. All sidewalks complete
 - a. Include all required ADA ramps, landings, and curb ramps
 - b. Include all detectable warnings
 - c. Railings by BP-0500
5. All site bollards (concrete-filled, decorative, collapsible) complete
 - a. Include concrete footing/base and pipe fill, backfill, grout, etc.
6. Saw cut and square sidewalks and curbs as required
7. Aggregate base for site concrete items as required
- h. Complete **Site Furnishings** requirements
 - i. Install four (4) ground-set flagpoles and one (1) bike rack
 - ii. Include all concrete and anchoring requirements (foundation, base, drill & epoxy, etc.) for this scope
- i. Complete **Site Utilities** requirements
 - i. Site Domestic Water to within 5' of building
 1. Include all water meter setters, BFP devices, vaults and associated hot boxes
 - a. Install link seals at all piping thru underground vaults and walls
 - b. Water meter installed by utility provider
 2. Include yard hydrants as shown
 - ii. Fire line to 1' AFF in Riser/Mechanical Room
 1. All valve boxes, meter boxes, hydrants, PIVs, etc. as indicated in contract documents; adjust as required to meet grades
 2. All site hotboxes, tracer wire, and heating elements in hot boxes
 3. All backflow devices for this scope
 4. All joints must be 100% restrained, whether indicated or not
 5. Provide tamper switches and relays as required; final installation and terminations by others
 6. All related signage (FDC, PIV, etc.) and markings as required
 7. Conduits and pull strings for electrical and fire alarm installed by BP-2600 Electrical; coordination required
 8. All piping to water storage tank, tank to pump house, pump house to fire loop and to Riser Room
 - a. Install to piping 1' AFF; cap ends for connection by others
 - b. Piping, valves, etc. within tank and pump house by others
 9. Coordination with other trades is a requirement
 - iii. Sanitary Sewer to within 5' of building
 1. Include all manholes, cleanouts, etc.
 2. Provide cleanouts when connecting to plumbing lines
 3. Include all Jack & Bore requirements
 4. Make connection to existing gravity sewer manhole
 - iv. Make necessary adjustments to all (existing & new) cleanouts, rings & covers, valve boxes, inlet grates, etc. to meet grade
 - v. Temporary Construction
 1. Provide temporary water service to Construction Manager's Field Office

2. Provide temporary water (meter assembly, connection, hydrant, etc. for masonry and general construction use; coordinate location with Construction Manager
 3. Usage fees paid by Construction Manager
- j. **Complete Infrastructure for Alternates—Base Bid Scope of Work**
- i. Each alternate site is to be constructed to final grade, sloped for drainage, respread topsoil, & temporary seeding; final seeding by BP-3290 Landscaping
 - ii. Install permanent storm drainage system for football field
 - iii. Install all site utility (water, sewer, irrigation) infrastructure; terminate for future connections
 - iv. Sidewalks will be constructed as part of each respective alternate
- k. **NCDOT Hobbton Highway Turn Lane construction**
- i. **Refer to Alternate #16 per CMC-03**
- l. **Allowances and Unit Prices**
- i. **Include all stated allowances as outlined within this bid scope**

3. Sitework Supplemental Requirements

- a. All work shall be constructed in accordance with all Local, State (NCDOT, OSHA, NCDENR and NCDEMLR) and Federal standards and specifications. Notify Construction Manager of any conflicts between specifications and Agency requirements prior to beginning work
- b. All excavation, trenching and earthwork in full compliance with OSHA trench and shoring requirements including any temporary shoring, trench boxes, benching, fall protection, egress requirements, etc.
- c. Subcontractor shall provide and maintain a construction activity pollution prevention plan. Plan must be submitted to Construction Manager within 30 days from Notice to Proceed. Documentation of plan execution must be submitted to Construction Manager with each monthly pay application. At a minimum, plan shall address inspection and reporting requirements and procedures, construction entrance, surface stabilization, run off control, run off conveyance, outlet protection, inlet protection, sediment tramp installation, and maintenance. Provide copies of all paperwork and reporting to Construction Manager on a weekly basis.
- d. Provide Pollution Liability insurance; Refer to Exhibit C requirements
- e. Install, maintain & remove all erosion control measures per Construction Documents through Project Acceptance; restore site as required
 - i. Include all NCDEQ requirements for inspections, documentation & maintenance
 - ii. Conduct Self-monitoring Inspections for all land disturbing activity as required by NCGS 113A-54.1(e) and 15A NCAC 04B.0131
 - iii. All Inspection and Monitoring Records (DEMLR form) shall be maintained on Construction Manager's Procure app for this project
 - iv. Remove erosion control measures, as specified in the erosion and sedimentation control plan, with approval from DEMLR Inspector
- f. Full compliance with underground location requirements as required by law:
 - i. Include all costs for locating all utilities **not** covered under "NC One Call"
 - ii. Provide Construction Manager with NC 811 locate ticket number prior to commencement of work

- iii. Advise Construction Manager of any underground conflict with proposed work prior to commencement of work
- g. All dewatering (mud pump, ditching) measures as required for this scope
- h. Legally dispose of all exported materials and debris
- i. Remove project mock-up walls and foundations at project closeout or as directed by Construction Manager; restore site as required
- j. Subcontractor shall install jute matting on all slopes 2:1 or greater including erosion control ponds. Subcontractor shall include swales and corrugated drainage piping at the top of slopes greater than 4:1 to conduct water to bottom of slope.
- k. Install temporary seed and jute matting on all slopes of each sediment basin
- l. Construction entrances to be maintained accessible to vehicular traffic, free from ruts, bumps, potholes, etc. for duration of the project.
- m. Comply with all notes on plans and specifications regarding land disturbing activities
- n. Furnish & install "Temporary Access Drives," "Contractor Laydown and Staging Area," and "Crane Pad" as detailed on Site Logistics Plan
 - i. Coordinate installation and sequencing of water, sewer, grading, power, etc. with Construction Manager
 - ii. Include all associated costs to remove stone and fabric upon completion of exterior envelop operations or as directed by Construction Manager
 - 1. Stone determined suitable for reuse may be salvaged to replenish permanent drives during construction
 - 2. Include cost to haul off-site excess stone not used to replenish drives
 - iii. Regrade, replenish, and establish permanent stone drives as part of this scope
- o. Subcontractor acknowledges there is no long-term storage for surplus materials, topsoil, etc. available on site. All materials shall be removed from the site at time of excavation.
 - i. Temporary stockpiles are granted approval at sole discretion of Construction Manager
 - ii. Location of any stockpile shall be coordinated with prior to establishing stockpile
 - iii. Stockpiles shall not be located such that they impede construction of utilities, storm drainage, parking lots, access roads, etc.
- p. Include all associated cost to remove contaminated stone from permanent drives used during construction and replenish stone as required
- q. Include all necessary clearing, grubbing, and stripping of site
 - i. Subcontractor may elect to chip stumps and utilize mulch for stabilization of slopes/areas as directed by Construction Manager
- r. Burning on-site will **not** be permitted
- s. Maintain all on-site and off-site roadways free and clear of mud resulting from construction activities
 - i. Provide one street sweeper on-site with operator through duration of the project
 - ii. Streets shall be maintained as needed, but no less than daily, or as directed by Construction Manager
- t. Provide all necessary dust control measures to complete this scope of work and as directed by Construction Manager
- u. Include all excavation, embankment, backfill and compaction requirements for this scope
- v. Proof-roll all structural subgrades for building pads, paved areas, and stone drives

- w. Provide all rough-grading and fine grading activities to within +/- 0.10'
- x. Building pad subgrade will be turned over +/- 0.10'
- y. Protect & seal exposed subgrades on a daily basis
- z. Maintain positive drainage throughout project to eliminate and ensure no standing water on-site:
 - i. Ensure positive drainage from building is maintained
 - ii. Subcontractor must keep adequate equipment and operator on-site at all times
 - iii. Site maintenance shall occur prior to each rain event and at least once weekly
 - 1. Maintain site with a smooth drum vibratory compactor
 - 2. Smooth ruts frequently each day
- aa. All topsoil shall be screened. **Screened Topsoil requirement will be strictly enforced.** Include cost to material screen all topsoil on-site prior to its installation. It is understood that the requirement for screened topsoil may be above requirements indicated in the specifications. At Subcontractor's option, and at no additional cost to the project, imported screened topsoil material may be utilized. Topsoil to be graded to +/- 0.10' and free of rocks, roots, trash, and any other debris. Topsoil depth for all lawn areas to be 6"; maximum particle size ½" 100% passing. While hand-raking, disking, and other methods of removing deleterious materials from topsoil are encouraged, these methods will not be acceptable as the sole source procedure for topsoil preparation.
- bb. Backfill building foundation exterior-side after completion of below-grade masonry:
 - i. Masonry will be completed in phases; Subcontractor shall include all necessary mobilizations to backfill foundations to ensure masonry progresses without delay
 - ii. Include dewatering and removal of wet soils, mud, trash & debris, etc. as required to prepare foundation (concrete, masonry) walls for backfilling
- cc. Backfill all curbs and sidewalks immediately upon completion of these trades, but no less than weekly when constructing curb or sidewalk
- dd. Excavate for and backfill all CIP concrete site walls
 - i. Excavate to top of foundation; slope and bench soils as required for safety
 - ii. Backfill walls after waterproofing and foundation drains are installed
- ee. Include all associated cost to flush all storm drain lines to remove all sediment accumulated during construction; notify Construction Manager prior to flushing.
 - i. Subcontractor shall exercise all necessary care to minimize sediment entering storm drainage system through use and rigorous routine maintenance of inlet protection as part of this bid scope
- ff. Include removal and disposal of foundation spoils as part of this bid scope. Spoils will be deposited in a central location by others
- gg. Remove all excavation spoils and excess soil material generated by BP-0300 Concrete

4. Bituminous Asphalt Concrete Pavement Supplemental Requirements

- a. Adjust manhole covers, cleanouts, valve covers, etc. as required to flush with paving
- b. Traffic signage shall include all handicap signage, stop signs, yield signs, regulatory, caution & directional signs, etc. inclusive of excavation, posts, hardware, concrete, etc.
- c. Include cost to clean binder of all debris, mud, etc. as required to install surface course
- d. Subcontractor shall include restriping and marking existing pavements as indicated
- e. All pavement markings in Public Rights-of-Way shall be thermoplastic

5. Site Concrete Supplemental Requirements

- a. Provide all site concrete including vehicular paving, curbs, gutters, aprons, sidewalks, ADA ramps, and loading dock pavement
- b. Include all necessary fine grading, stone base, reinforcement, formwork, and specified finishes for all site concrete
- c. Include all required detectable warning surfaces, even though not indicated
- d. Provide all fabrication, delivery, materials, and material handling (crane, pump, buggy) as required for the Work
- e. Subcontractor must coordinate exterior door and window transitions to ensure positive drainage from building and finish transitions (troweled finish to broomed finish) occur under frames and thresholds. Include saw cut or removal & replacement of any concrete where transitions do not occur under a frame or threshold (i.e., troweled finishes visible from the exterior will not be accepted)
- f. Site concrete shall be held down ½" to ensure positive drainage away from building. Care shall be taken to ensure concrete maintains ADA accessibility. Remove and replace any concrete installed under this bid package without positive drainage or out of compliance with ADA.
- g. Provide concrete in compliance with specification and hot and cold weather concrete procedures:
 - i. Provide all necessary admixtures and additives to include, but not limited to, water-reducing admixture, hot water, cold water, ice, retardant, super-plasticizer, air entrainment, fly ash, corrosion inhibitors, etc.
 - ii. Include all associated cost for surcharges, environmental fees, short loads, heated & chilled water, ice, etc. as part of this bid package
 - iii. Refer to Bid Schedule; schedule is schematic in nature and will be adjusted once approved subcontractors are on board
- h. All concrete shall be shipped within and shall maintain specified temperatures throughout the approved placement and curing time allotments specified in the Contract Documents at no additional cost to Construction Manager. Delaying concrete placements to avoid controllable concrete temperature placements is not acceptable means and methods.
- i. Subcontractor is responsible for the strength of concrete as determined by specimens taken at point of discharge or sampling in accordance with all applicable ACI and ASTM standards and specifications for sampling, curing, and testing:
 - i. Actual records of Subcontractor's Ready Mix Vendor's delivery performance shall be kept and furnished to Construction Manager
 - ii. If said concrete does not achieve design strength or Owner's acceptance, Subcontractor will be responsible for all costs of removing, testing, and retesting, replacing, and/or shoring said concrete
- j. Construction Manager will not be responsible for payment of defective concrete, returned concrete not in-compliance with approved submittals, short-loads, minimum load requirement charges, weekend or after-hour concrete placements requirements, environmental fees or chargers, fuel surcharges, concrete delivered without inspection

- approvals for work to be placed, or returned deliveries which were not coordinated with Contractor
- k. Subcontractor is responsible for all cold and hot weather requirements:
 - i. Provide concrete blankets or temporary heat as required
 - ii. Review weather procedures with Construction Manager prior to each placement
 - l. All horizontal dowels to be "Speed Dowel" type at all concrete pavement and pad construction joints, whether indicated or not
 - i. Dowels shall not be "wet set"
 - ii. Dowels shall not be installed while adjacent construction is on-going
 - iii. Protect exposed dowels from damage
 - m. Coordinate concrete finishes with Construction Manager
 - n. Construct, maintain, and restore concrete washout areas in accordance with NCDEQ guidelines and at direction of Construction Manager
 - i. Install necessary signage
 - ii. All concrete rubble will be legally disposed of off-site under this bid scope

6. Site Utilities Supplemental Requirements

- a. Complete excavation, bedding course installation and backfill per specification
- b. New fire hydrants shall be made operable prior to construction of building
- c. Provide all specified separations between sanitary sewers in relation to water and storm sewers. Notify Construction Manager immediately if separation is not possible.
- d. Provide thrust restraints as specified for all work installed under this bid scope
- e. Include protective concrete encasement or precast "donuts" for all valve boxes and cleanouts installed under this bid scope
- f. Include concrete pads for hot boxes installed under this scope
- g. Connect to sanitary sewer stub outs; include necessary coordination to include locating and connecting as part of this bid scope.
- h. Provide detectable marking tape and wire as specified for all work installed
- i. Provide sealed flange for fire main run-in and FDC run-out stub-ups
- j. Furnish & install "meter setter," water meter and meter box as part of this scope
 - i. Permanent water meter and tap fees paid by others
 - ii. Meter shall be established in Construction Manager's name
 - iii. All temporary usage fees are paid by Construction Manager
- k. Include all costs (hydrant meter, water use, fees, etc.) associated with testing and certification of all domestic water and fire lines (main & FDC runout) installed under this bid scope
- l. Include flushing and chlorination of domestic potable water lines
 - i. Provide bacteria test report for site water line
 - ii. De-chlorination method to be approved by AHJ
 - iii. Construction Manager and fire protection contractor to witness flushing of domestic and fire lines
 - iv. Provide NFPA 24 Certification at completion of site fire lines
 - v. Provide pressure testing of domestic water lines to point of connection with plumbing contractor

- m. Provide certification for all backflow (RPZ/BFP) devices installed under this scope; a representative certified in backflow prevention assembly in the State of North Carolina and acceptable to Owner must be employed for this work
- n. Include all testing requirements (video, mandrel, pressure, etc.) requirements for AHJ acceptance
- o. Include all trenching requirements to include trench boxes, shoring, dewatering, etc.
- p. All utility piping shall have ends sealed on a daily basis to prevent water, dirt, silt, debris, etc. from entering
- q. All penetrations thru foundation walls created by this scope shall be made watertight to include core drilling and link seals; restore below-grade waterproofing as required
- r. Coordinate with utility service providers as required:
 - i. Include under pavement sleeves where required
 - ii. Utility Company shall not open cut pavement structures after permanent CABC has been installed
 - iii. Subcontractor shall be responsible for any restoration of subgrade, geotextile fabrics, CABC, curb & gutter, etc. at no cost to the project
- s. Remove obstructions as required to install utilities; restore as necessary

7. Allowances and Unit Prices

Include all stated allowances as outlined within this bid scope

Allowances are the product of the unit price and indicated quantity

Allowances include all cost of work, overhead and profit to make a complete installation and shall be based upon indicated Quantities and Unit Prices, unless otherwise noted. Use of any allowance shall be as directed by Construction Manager and supported with sufficient documentation as required. Any work performed without prior written authorization will be considered as a requirement to complete the scope of work in this bid package and at no cost to the project. Any unused portion of an allowance will be credited in full against the Contract amount.

Unit prices shall apply throughout the life of the contract, except as otherwise specifically noted. Unit prices shall be applied, as appropriate, to compute the total value of changes in the base bid quantity of the work all in accordance with the contract documents.

Include as **Allowances for designated scope and quantity**, installed as directed by Construction Manager and shall be based upon indicated Quantities and Unit Prices:

#01	Unsuitable soils (Mass) remove & dispose ON-SITE	4,000 CY
#02	Unsuitable soils (Mass) remove & dispose off-site	2,000 CY
#03	Unsuitable soils (Trench) remove & dispose off-site	250 CY
#04	Unsuitable soils (Trench) remove & dispose ON-SITE	250 CY
#05	Replacement of removed soils (Mass) with import fill	4,000 CY
#06	Replacement of removed soils (Mass) with ON-SITE fill	2,000 CY
#07	Replacement of removed soils (Mass) with ABC stone	2,000 CY
#08	Replacement of removed soils (Mass) with asphalt binder	100 CY
#09	Replacement of removed soils (Trench) with ON-SITE fill	1,000 CY

#10	Replacement of removed soils (Trench) with import fill	250 CY
#11	Replacement of removed soils (Trench) with #57 stone	250 CY
#12	Dispose trades waste soils, provide ON-SITE soils	400 CY
#13	Biaxial Geogrid	500 SY
#14	Woven Geotextile	1,000 SY
#15	Asphalt patch and repair (full-depth asphalt)	200 CY
#16	Remove & replace 24" Curb & Gutter	100 LF
#17	Remove & replace sidewalk	100 SF
#18	Furnish & install 6" steel pipe bollard, complete	5 Each
#19	High-Capacity French Drain	2,000 LF

- a. Allowances shall include all associated cost for purchase of materials, transportation, placement, compaction, and quantity verification
- b. Allowance usage must be quantified by the geotechnical representative and stated in its daily field report; undocumented work is assumed to be part of the base bid requirements
- c. Allowance to include all requirements outlined within this bid scope

Include an **Allowance** for **replacement of stone drives**, installed as directed by Construction Manager and shall be based upon in-place quantities and associated unit prices:

- a. Replacement of stone drives is defined as repairs required in addition to those specified within the bid package
- b. Unit prices (ABC, Geogrid, etc.) indicated above will apply
- c. Allowance to include all requirements outlined within this bid package
- d. **Allowance #20: Lump Sum \$75,000**

8. Inspections are required on this project:
 - a. Refer to Specifications and Drawings for schedule of special inspections
 - b. Coordinate with special inspector, testing agencies, local inspectors, and Engineer of Record as may be required
 - c. Include all associated cost to participate and support inspections
 - d. Perform quality control testing to demonstrate compliance with contract documents in advance of inspections and 3rd-party testing
 - e. Subcontractor shall be responsible for all costs (re-testing, corrective measures, repairs, etc.) when its installation fails to meet compliance
 - f. Owner and Construction Manager reserve the right to request additional testing in the event of significant or continual test failures
 - g. Coordinate with Construction Manager for scheduling of inspections
9. Include all necessary crews and equipment as required to facilitate construction progress
10. Pricing is firm, not subject to escalation for duration of project

SPECIFIC EXCLUSIONS

1. Termite Control, transformer pad, and mechanical pads (BP-0300)
2. Site Lighting by others
3. Transformer pad and mechanical pads (BP-0300)

4. Drainage course for building SOG (BP-0300)
5. Landscaping & final seeding (BP-3290)
6. Permanent fences and gates (BP-3231)
7. Dumpster enclosure foundations and walls
8. All work in Right-of-Way, unless otherwise noted within
9. Removal of masonry debris and rubble (BP-0400)
10. Waste and recycling dumpsters
11. Grease Interceptor and Acid Neutralization tanks (BP-2200)

ALTERNATES

Alternate #01, Football Field and Track, if selected by Owner, shall include any specific or special requirements, above and beyond that of the base bid, to support the indicated scope of work as outlined in the project documents and within this bid package:

- Base Bid:** Construct field to final grade, sloped for drainage; all site utility infrastructure, respread topsoil to specified depths, etc.
- Alternate:** Provide all sitework requirements (grading, site concrete, stone, and asphalt base for athletic track, long, triple & high jump, and pole vault facilities, concrete curbs and pads, trench drain, sand, pits, irrigation water run-outs, etc.) to construct a complete football and athletic events fields

Alternate #02, Grandstands and Press Box, if selected by Owner, shall include any specific or special requirements, above and beyond that of the base bid, to support the indicated scope of work as outlined in the project documents and within this bid package:

- Base Bid:** Construct area to final grade, sloped for drainage
- Alternate:** Provide miscellaneous grading and sidewalks
Grandstand and press box foundations and slabs installed by others

Alternate #03, Concession Stand and Restroom, if selected by Owner, shall include any specific or special requirements, above and beyond that of the base bid, to support the indicated scope of work as outlined in the project documents and within this bid package:

- Base Bid:** Construct area to final grade, sloped for drainage; all site utility infrastructure, respread topsoil to specified depths, etc.
- Alternate:** Provide all sitework requirements (grading, site concrete, connections to water and sewer)

Alternate #04, Baseball Field, if selected by Owner, shall include any specific or special requirements, above and beyond that of the base bid, to support the indicated scope of work as outlined in the project documents and within this bid package:

- Base Bid:** Construct field to final grade, sloped for drainage; all site utility infrastructure, respread topsoil to specified depths, etc. as outlined in the project documents and this bid package for future baseball field
- Alternate:** Provide all sitework requirements (miscellaneous grading, site concrete, irrigation water run-out)

Alternate #05, Softball Field, if selected by Owner, shall include any specific or special requirements, above and beyond that of the base bid, to support the indicated scope of work as outlined in the project documents and within this bid package:

Base Bid: Construct field to final grade, sloped for drainage; all site utility infrastructure, respread topsoil to specified depths, etc. as outlined in the project documents and this bid package for future softball field

Alternate: Provide all sitework requirements (miscellaneous grading, site concrete, irrigation water run-out)

Alternate #16, Hobpton Highway Road Widening, if selected by Owner, shall include any specific or special requirements, above and beyond that of the base bid, to support the indicated scope of work as outlined in the project documents and within this bid package:

Base Bid: Widening is not in base bid scope; install temporary construction entrances

Alternate: Provide all sitework requirements within this bid scope (e.g., surveying, layout, erosion control measures, grading, asphalt pavements, pavement markings, signage, traffic control, etc.) to construct the proposed road widening. Include entrance drive construction and storm drainage piping at both entrances. Include final seeding of disturbed areas (shoulders) of Hobpton Highway.

NCDOT has not indicated how existing markings will be removed; therefore, include grinding of markings in preparation for new.

Clean storm drainage system as required to remove silt deposits