



CLIENT CONTACT
Abbie C. Previtt
843-449-6414 OFFICE / 910-580-0031 Cell
7008 Turtle Cove Dr.
Myrtle Beach, SC 29572

© 2024 this (hard copy or electronic) drawing is an instrument of service and the property of the design team and shall remain their property. The design professional shall not be responsible for any alterations, modifications or additions made to this drawing by any party other than the design professional. Use of this drawing shall be limited to the original site for which it was prepared and publication thereof is expressly limited to such use. Re-use or reproduction, unless otherwise agreed in writing, design professional reserves all copyright or other proprietary interest in this drawing, and it may not be re-used for any other purpose without the design professional's written consent. Publication by any method in whole or part is prohibited without the written permission of the design professional. Any information obtained or conclusions derived from this drawing shall be at the user's sole risk.

PROJECT NUMBER 25007	
DATE OF ISSUE 12.05.2025	
REVISION NO.	DATE
1 QA/QC	02.03.2026

PROJECT PHASE
CD

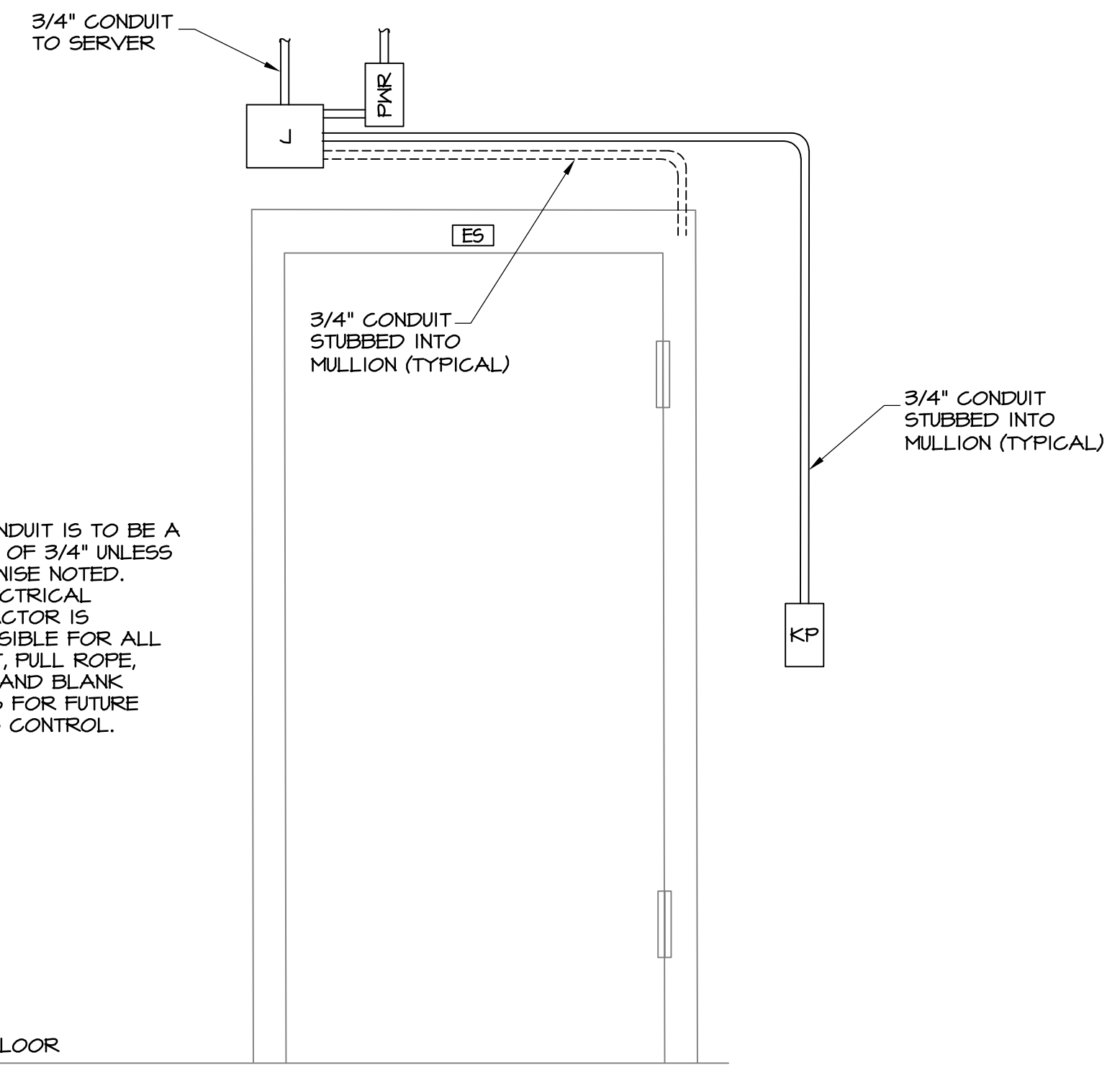
APPROVED BY
TW

DRAWN BY
AP

SHEET CONTENTS
ELECTRICAL RISER DIAGRAM

SHEET NO.

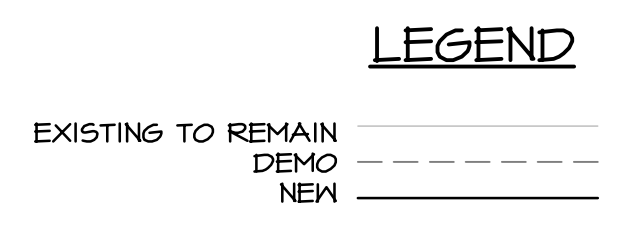
HSAEngineering
479 / 452 / 8922 office
7405 Ellis St.
Fort Smith, AR 72916
HSAConsultants.com



- NOTES:**
- ALL CONDUIT IS TO BE A MINIMUM OF 3/4" UNLESS OTHERWISE NOTED.
 - THE ELECTRICAL CONTRACTOR IS RESPONSIBLE FOR ALL CONDUIT, FULL ROPE, BOXES, AND BLANK COVERS FOR FUTURE ACCESS CONTROL.

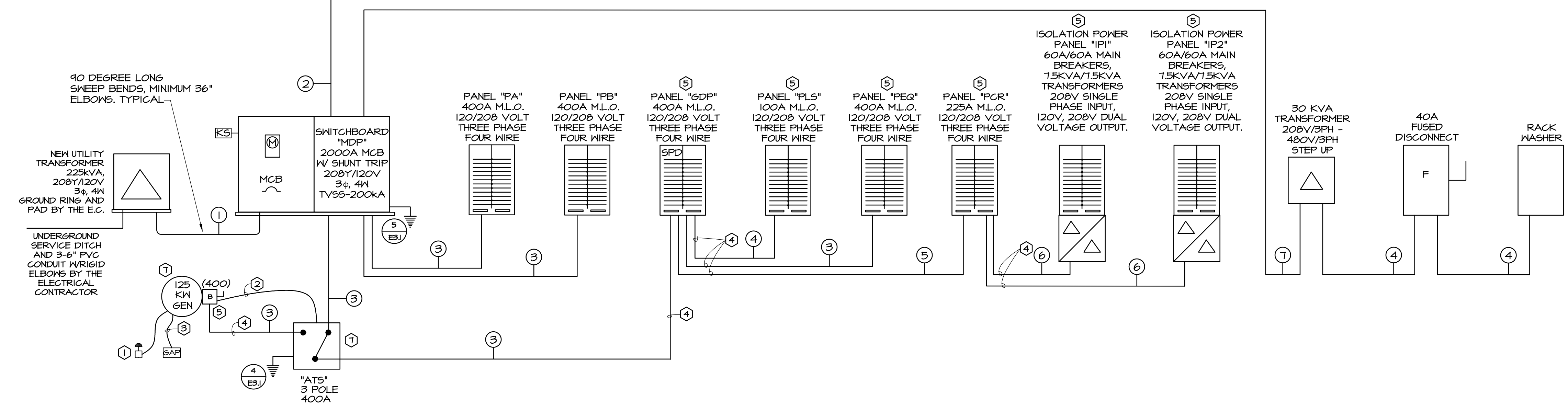
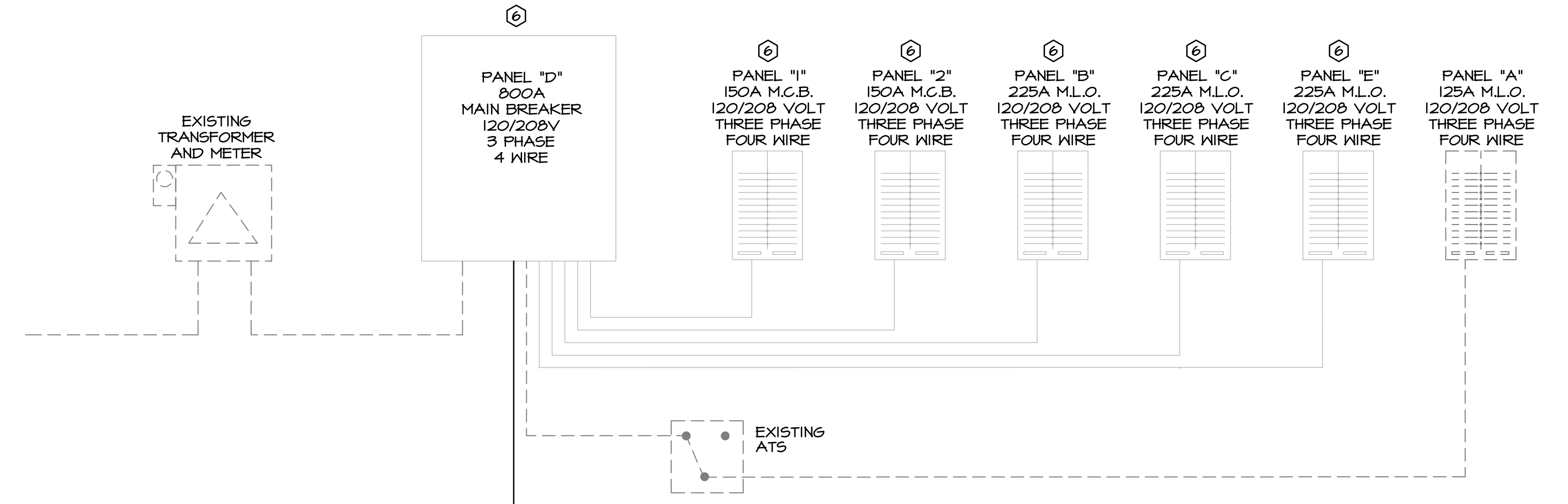
2 ACCESS CONTROL DETAIL
N.T.S.

- KEYED RISER NOTES**
- PROVIDE EPO SWITCH WITH ONE DRY CONTACT FOR GENERATOR SHUT DOWN ACTIVATION OF EPO SHALL AUTOMATICALLY SHUT DOWN GENERATOR. PROVIDE LABEL "GENERATOR DISCONNECT". PROVIDE CONTRL WIRING FOR GENERATOR SHUT DOWN.
 - 4-#14 CONDUCTORS AND 1-BELDEN 9841 WIRE IN 1" CONDUIT FROM GENERATOR TO THE ATS.
 - 2-#14 CONDUCTORS AND 1-BELDEN 9841 WIRE IN 1" CONDUIT FROM ATS TO GENERATOR ANNUNCIATOR PANEL.
 - FEEDER CIRCUIT WIRING FOR EMERGENCY SYSTEM IS TO BE PROTECTED PER NEG SECTION 100.10 (D).
 - PROVIDE CIRCUIT BREAKER AND PANELBOARD COMBINATIONS TO ACHIEVE SELECTIVE COORDINATION FOR THE EMERGENCY SYSTEM PER NEG SECTION 100.32.
 - EXISTING TO REMAIN ELECTRICAL PANELS ARE TO REMAIN OPERATIONAL DURING CONSTRUCTION. COORDINATE ANY OUTAGES WITH THE OWNER.
 - CONTRACTOR TO SUPPLY DIESEL FIRED GENERATOR AND AUTOMATIC TRANSFER SWITCH (ATS) THAT IS RATED TO SUPPLY A LEVEL 1, TYPE 10 EPSS PER NFPA 110.

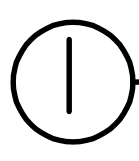


FEEDER SCHEDULE

1	6 SETS: 4-#400, 4" CONDUIT EACH
2	4-350 MCM, 1-#4 GRD; 3" CONDUIT
3	2 SETS: 4-#3/0, 1-#3 GRD; 2" CONDUIT EACH
4	4-#8, 1-#10 GRD; 3/4" CONDUIT
5	4-#3/0, 1-#6 GRD; 2" CONDUIT
6	4-#3, 1-#8 GRD; 1 1/2" CONDUIT
7	3-#1/0, 1-#6 GRD; 2" CONDUIT
8	NOT USED



1 ELECTRICAL RISER
N.T.S.





GRIFFIN SURGERY CENTER LLC

900 Medical Cir Ste 2
Myrtle Beach, SC 29572

CLIENT CONTACT
Abbie C Prevatt
843-449-6414 OFFICE / 910-580-0031 Cell
7008 Turtle Cove Dr
Myrtle Beach, SC 29572

© 2024 this (hard copy or electronic) drawing is an instrument of service and the property of the design team and shall remain their property. The design professional shall not be responsible for any alterations, modifications or additions made to this drawing by any party other than the design professional. Use of this drawing shall be limited to the original site for which it was prepared and publication thereof is expressly limited to such use, reuse or reproduction. Unless otherwise agreed in writing, design professional reserves all copyright or other proprietary interest in this drawing, and it may not be re-used for any other purpose without the design professional's written consent. Publication by any method in whole or part is prohibited without the written permission of the design professional. Any information obtained or conclusions derived from this drawing shall be at the user's sole risk.

PROJECT NUMBER
25007
DATE OF ISSUE
12.05.2025
REVISION NO. DATE
QA/QC 02.03.2026

PROJECT PHASE
CD
APPROVED BY
TW DRAWN BY
AP

SHEET CONTENTS
ELECTRICAL SCHEDULES

SHEET NO.
E5.2

PANEL SCHEDULE																					
PANEL MARK:		PCR		MANUFACTURER:		SQUARE D		TYPE:		NQ		FAULT RATING:		SERIES							
MAIN BRKR AMPS:		N/A		MLO SIZE:		225		FEED:		---		WIRE:		REFER TO ELECTRICAL RISER							
VOLTAGE:		120/208		PHASE:		THREE PHASE - FOUR WIRE		MOUNTING:		SURFACE		REMARKS:		CU BUS							
DESCRIPTION	LOAD			CIRCUIT	TRIP	POLE	TRIP	CIRCUIT	TRIP	POLE	TRIP	CIRCUIT	TRIP	POLE	TRIP	LOAD			DESCRIPTION		
	ΦA	ΦB	ΦC													ΦA	ΦB	ΦC			
R-RM: PRE-OP RECOVERY 6	720			1	20	1	2	20	1	3	12	12	3	4	20	1	3	12	12	3	BAS PANEL
R-RM: PRE-OP RECOVERY 5		720		1	20	3	4	20	1	3	12	12	3	4	20	1	3	12	12	3	R-RM: 136 MEDICAL GASES
R-RM: PRE-OP RECOVERY 4			720	1	20	5	6	20	1	3	12	12	3	6	20	1	3	12	12	3	R-RM: 136 MEDICAL GASES
R-RM: PRE-OP RECOVERY 3	720			1	20	7	8	20	1	3	12	12	3	8	20	1	3	12	12	3	CRASH CART
R-RM: PRE-OP RECOVERY 2		720		1	20	9	10	20	1	3	12	12	3	10	20	1	3	12	12	3	CRASH CART
R-RM: PRE-OP RECOVERY 1			720	1	20	11	12	20	1	3	12	12	3	12	20	1	3	12	12	3	NURSE CALL CONTROL PANEL
R-RM: PRE-OP/RECOVERY 0	720			1	20	13	14	20	1	3	10	10	3	14	20	1	3	10	10	3	L-OPERATING ROOM #1
R-RM: PRE-OP RECOVERY 1		720		1	20	15	16	20	1	3	10	10	3	16	20	1	3	10	10	3	L-OPERATING ROOM #2
MED GAS ALARM PANEL			200	1	20	17	18	20	1	2	**	**	**	**	**	**	**	**	**	**	PANEL "1P1"
R-RM: 114 ELECTRICAL ROOM	360			1	20	19	20	20	1	2	**	**	**	**	**	**	**	**	**	**	---
R-RM: 114 ELECTRICAL ROOM		360		1	20	21	22	20	1	2	**	**	**	**	**	**	**	**	**	**	PANEL "1P2"
R-RM: 116 ELECTRICAL ROOM			360	1	20	23	24	20	1	2	**	**	**	**	**	**	**	**	**	**	---
*ICE MACHINE	400			1	20	25	26	20	1	2	**	**	**	**	**	**	**	**	**	**	SPACE
*FRIDGE		400		1	20	27	28	20	1	2	**	**	**	**	**	**	**	**	**	**	SPACE
*FRIDGE			400	1	20	29	30	20	1	2	**	**	**	**	**	**	**	**	**	**	SPACE
SPARE				1	20	31	32	20	1	2	**	**	**	**	**	**	**	**	**	**	SPACE
SPARE				1	20	33	34	20	1	2	**	**	**	**	**	**	**	**	**	**	SPACE
SPARE				1	20	35	36	20	1	2	**	**	**	**	**	**	**	**	**	**	SPACE
SPARE				1	20	37	38	20	1	2	**	**	**	**	**	**	**	**	**	**	SPACE
SPARE				1	20	39	40	20	1	2	**	**	**	**	**	**	**	**	**	**	SPACE
SPARE				1	20	41	42	20	1	2	**	**	**	**	**	**	**	**	**	**	SPACE
TOTAL WATTS:	31400			PHASE A:	10180		PHASE B:	10400		PHASE C:	11320		DIVERSITY:								
TOTAL AMPS (3Φ):	88			PHASE A:			PHASE B:			PHASE C:			TOTAL AMP DIV:								

*REQUIRES GFCI BREAKER
**REFER TO ELECTRICAL RISER FOR WIRE, GROUND, AND CONDUIT SIZES.
***CIRCUIT CONTROLLED VIA TIME CLOCK & PHOTOCELL. PROVIDE EMERGENCY OVERRIDE FOR CIRCUIT.

PANEL SCHEDULE																					
PANEL MARK:		PEQ		MANUFACTURER:		SQUARE D		TYPE:		NQ		FAULT RATING:		SERIES							
MAIN BRKR AMPS:		N/A		MLO SIZE:		400		FEED:		---		WIRE:		REFER TO ELECTRICAL RISER							
VOLTAGE:		120/208		PHASE:		THREE PHASE - FOUR WIRE		MOUNTING:		SURFACE		REMARKS:		CU BUS							
DESCRIPTION	LOAD			CIRCUIT	TRIP	POLE	TRIP	CIRCUIT	TRIP	POLE	TRIP	CIRCUIT	TRIP	POLE	TRIP	LOAD			DESCRIPTION		
	ΦA	ΦB	ΦC													ΦA	ΦB	ΦC			
RTU-1	4090			1	20	1	2	30	3	5	10	10	3	5	10	3	5	10	10	3	VACUUM PUMP
---		4090		3	4	---	---	---	---	---	---	---	---	---	---	---	---	---	---	---	---
---			4090	5	6	---	---	---	---	---	---	---	---	---	---	---	---	---	---	---	---
RTU-2	4090			1	20	7	8	20	3	5	12	12	3	8	20	3	5	12	12	3	H-1
---		4090		9	10	---	---	---	---	---	---	---	---	---	---	---	---	---	---	---	---
---			4090	11	12	---	---	---	---	---	---	---	---	---	---	---	---	---	---	---	---
RTU-3	4505			1	20	13	14	20	3	5	12	12	3	14	20	3	5	12	12	3	H-2
---		4505		15	16	---	---	---	---	---	---	---	---	---	---	---	---	---	---	---	---
---			4505	17	18	---	---	---	---	---	---	---	---	---	---	---	---	---	---	---	---
RTU-4	8300			1	20	19	20	30	3	5	10	10	3	20	30	3	5	10	10	3	H-3
---		8300		21	22	---	---	---	---	---	---	---	---	---	---	---	---	---	---	---	---
---			8300	23	24	---	---	---	---	---	---	---	---	---	---	---	---	---	---	---	---
V3-01, 02, 05, 06 - CONTROLS	400			1	20	25	26	20	1	2	**	**	**	**	**	**	**	**	**	**	SPACE
V3-03, 04, 07 - CONTROLS		300		1	20	27	28	20	1	2	**	**	**	**	**	**	**	**	**	**	SPACE
V4-01, 02, 03 - CONTROLS			300	1	20	29	30	20	1	2	**	**	**	**	**	**	**	**	**	**	SPACE
V4-04, 05 - CONTROLS	200			1	20	31	32	20	1	2	**	**	**	**	**	**	**	**	**	**	SPACE
SPARE				1	20	33	34	20	1	2	**	**	**	**	**	**	**	**	**	**	SPACE
SPARE				1	20	35	36	20	1	2	**	**	**	**	**	**	**	**	**	**	SPACE
SPARE				1	20	37	38	20	1	2	**	**	**	**	**	**	**	**	**	**	SPACE
SPARE				1	20	39	40	20	1	2	**	**	**	**	**	**	**	**	**	**	SPACE
SPARE				1	20	41	42	20	1	2	**	**	**	**	**	**	**	**	**	**	SPACE
TOTAL WATTS:	103860			PHASE A:	34820		PHASE B:	34520		PHASE C:	34520		DIVERSITY:								
TOTAL AMPS (3Φ):	288			PHASE A:			PHASE B:			PHASE C:			TOTAL AMP DIV:								

*CIRCUIT CONTROLLED VIA TIME CLOCK & PHOTOCELL. PROVIDE EMERGENCY OVERRIDE FOR CIRCUIT.

PANEL SCHEDULE																					
PANEL MARK:		PL5		MANUFACTURER:		SQUARE D		TYPE:		NQ		FAULT RATING:		SERIES							
MAIN BRKR AMPS:		N/A		MLO SIZE:		100		FEED:		---		WIRE:		REFER TO ELECTRICAL RISER							
VOLTAGE:		120/208		PHASE:		THREE PHASE - FOUR WIRE		MOUNTING:		SURFACE		REMARKS:		CU BUS							
DESCRIPTION	LOAD			CIRCUIT	TRIP	POLE	TRIP	CIRCUIT	TRIP	POLE	TRIP	CIRCUIT	TRIP	POLE	TRIP	LOAD			DESCRIPTION		
	ΦA	ΦB	ΦC													ΦA	ΦB	ΦC			
FIRE ALARM CONTROL PANEL	600			1	20	1	2	20	1	3	12	12	3	4	20	1	3	12	12	3	DOOR OPERATORS
L - EMERGENCY LIGHTING		1185		1	20	3	4	20	1	3	12	12	3	4	20	1	3	12	12	3	DOOR OPERATORS
*L - EXTERIOR			300	5	6	20	1	3	12	12	3	4	20	1	3	12	12	3	4	20	DOOR OPERATORS
SMOKE DAMPERS	500			1	20	7	8	20	1	3	10	10	3	8	20	1	3	10	10	3	GENERATOR BLOCK HEATER
SPARE				1	20	9	10	20	1	3	10	10	3	10	20	1	3	10	10	3	GENERATOR CHARGER
SPARE				1	20	11	12	20	1	2	**	**	**	**	**	**	**	**	**	**	SPACE
SPARE				1	20	13	14	20	1	2	**	**	**	**	**	**	**	**	**	**	SPACE
SPARE				1	20	15	16	20	1	2	**	**	**	**	**	**	**	**	**	**	SPACE
SPARE				1	20	17	18	20	1	2	**	**	**	**	**	**	**	**	**	**	SPACE
TOTAL WATTS:	7315			PHASE A:	3650		PHASE B:	2385		PHASE C:	1280		DIVERSITY:								
TOTAL AMPS (3Φ):	20			PHASE A:			PHASE B:			PHASE C:			TOTAL AMP DIV:								

*CIRCUIT CONTROLLED VIA TIME CLOCK & PHOTOCELL. PROVIDE EMERGENCY OVERRIDE FOR CIRCUIT.

PANEL SCHEDULE																					
PANEL MARK:		PA		MANUFACTURER:		SQUARE D		TYPE:		NQ		FAULT RATING:		SERIES							
MAIN BRKR AMPS:		N/A		MLO SIZE:		400		FEED:		---		WIRE:		REFER TO ELECTRICAL RISER							
VOLTAGE:		120/208		PHASE:		THREE PHASE - FOUR WIRE		MOUNTING:		SURFACE		REMARKS:		CU BUS							
DESCRIPTION	LOAD			CIRCUIT	TRIP	POLE	TRIP	CIRCUIT	TRIP	POLE	TRIP	CIRCUIT	TRIP	POLE	TRIP	LOAD			DESCRIPTION		
	ΦA	ΦB	ΦC													ΦA	ΦB	ΦC			
EF-1	1200			1	20	1	2	20	1	3	12	12	3	4	20	1	3	12	12	3	STERILIZER - CONTROLS
EF-2#3		800		3	4	20	3	4	20	3	5	12	12	3	5	12	12	3	5	12	STERILIZER - VACUUM PUMP
EF-4#5			1080	5	6	---	---	---	---	---	---	---	---	---	---	---	---	---	---	---	---
GP-1	600			1	20	7	8	20	1	3	12	12	3	8	20	1	3	12	12	3	---
R-RM: 124 STERILE SUPPLIES		900		1	20	9	10	20	1	3	12	12	3	10	20	1	3	12	12	3	STERILIZER - CONTROLS
R-RM: 127, 128, 137			1080	11	12	20	3	5	12	12	3	5	12	12	3	5	12	12	3	5	STERILIZER - VACUUM PUMP
R-RM: PRE-OP RECOVERY 6	720			1	20	13	14	20	1	3	10	10	3	14	20	1	3	10	10	3	---
R-RM: PRE-OP RECOVERY 5		720		1	20	15	16	20	1	3	10	10	3	16	20	1	3	10	10	3	---
R-RM: PRE-OP RECOVERY 4			720	1	20	17	18	20	1	3											