

ITB # 26-408 Hampstead Library Construction Services

Addendum 3

December 15, 2025

To: All Plan Holders

From: Scott Spike



General Items

1. Bid date and time remain unchanged.
2. Invitation to Bid, paragraph A: The last sentence is revised to read, "A 5% Bid Bond is required." The bid bond is not required to be in a separate envelope from the sealed proposal.
3. The pre-bid meeting minutes were included in Addendum 1; paragraph VIII of the minutes is revised to read as follows:
 - VIII. The following are a few key items:
 - A. Bid Packages should include items listed in Instructions to Bidders.
 - B. Sealed Bid Packages are due by the date, time, and location indicated on the Invitation to Bid, unless modified by addendum.
 - C. Single Prime Contract, Bidders must be properly licensed under NCGS, Chapter 87.
 - D. 5% Bid Bond is required.
 - E. Successful bidder will be required to provide 100% Performance and Payment Bonds.
 - F. Owner reserves the right to reject any or all bids and to waive informalities.
4. The Contractor is responsible for fees for the building permit and sign permit. A copy of the current Pender County Permitting & Inspections Fee Schedule is attached to this addendum.
5. The Contractor is responsible for tap fees. The water utility is Pender County Utilities, and the sewer utility is Pluris.
6. Water and sewer impact fees have already been paid.

Specification Items

1. Section 03 3000 – Cast-In-Place Concrete: Revise paragraph 2.7, B to read as follows:
 - B. Granular Fill: Provide Aggregate Base Course/Capillary Break materials as indicated in the geotechnical report. A copy of this report is included in the project manual.
2. Section 05 1200 – Structural Steel Framing; revise paragraph **1.7-A & B** to read as follows:
 - A. Fabricator Qualifications: A qualified fabricator that participates in the AISC Quality Certification Program and is designated an AISC-Certified Plant Category STD. In lieu of fabricator AISC certification, it is acceptable for the Contractor to hire a licensed third-party steel inspector to perform shop inspection and oversee quality control procedures during fabrication, abiding by AISC requirements.

Pender County Library, Hampstead Branch

Addendum 3

- B. Installer Qualifications: A qualified installer who participates in the AISC Quality Certification Program or abides by AISC requirements.
- 3. Section 10 1423 – Panel Signage:
 - a. Paragraph **2.04-B-1**, revise to read as follows:
 - 1. Allow for one emergency evacuation map, 10 inches high x 12 inches wide. Location to be determined during construction.
 - b. Paragraph **2.04-C-1**, revise to read as follows:
 - 1. Dimensions and number of panels: Allow for one recognition/donor panel, 24 inches high x 18 inches wide. Location to be determined during construction.
- 4. Section 10 1433 – Illuminated Cabinet Signage; revise as noted below:
 - a. Paragraph **2.01-B-1**, revise to read as follows:
 - 1. Cabinet Sign Frames: Extruded-aluminum frames mitered with concealed anchors and welded, extrusions 12 inches wide, length and width of sign as indicated on drawings. Coordinate attachment points on structural steel posts.
 - b. Paragraph **2.01-C-1**, revise to read as follows:
 - 1. Cabinet Sign Frames: Extruded-aluminum frames mitered with concealed anchors and welded, extrusions 6 inches wide, fabricated to shape indicated on drawings.
- 5. Section 23 0500 – Heating and Air Conditioning, Article 23 0505 Packaged Heat Pumps, add the following clarification:
 - a. For SZVAV units, unit's supply air volume shall be variable by changing airflow in stages to match staging of the unit's compressors.

Drawing Items

- 1. In the drawing index on sheets G1.0 and C0.0, please disregard reference to sheet C3.0. This sheet is not included in the drawing set and is not needed.
- 2. Sheet 5.0 Landscape Plan is replaced, see attached revised plan.
- 3. Sheet U5.1 Site Utility is replaced, see attached revised plan.
- 4. Sheet U9.5 Pluris Details 1 is replaced, see attached revised plan.
- 5. Sheet M3.0 Mechanical Control Diagrams, please add the following clarification:
 - a. Packaged Heat Pump Unit - Single Zone VAV & OA Economizer (PHP-1 & 6): Update sequence of operation A. Occupied 3. for Supply Air Fan **to adjust speed in stages to match compressor staging** to maintain space temperature setpoint.

Clarifications

- 1. All exterior window and door frames are curtain wall, except for the automatic entrances.
- 2. County's vendor to run fiber from handhole to Data Room D1, see Electrical drawings for info on hand hole and conduit to Data Room.

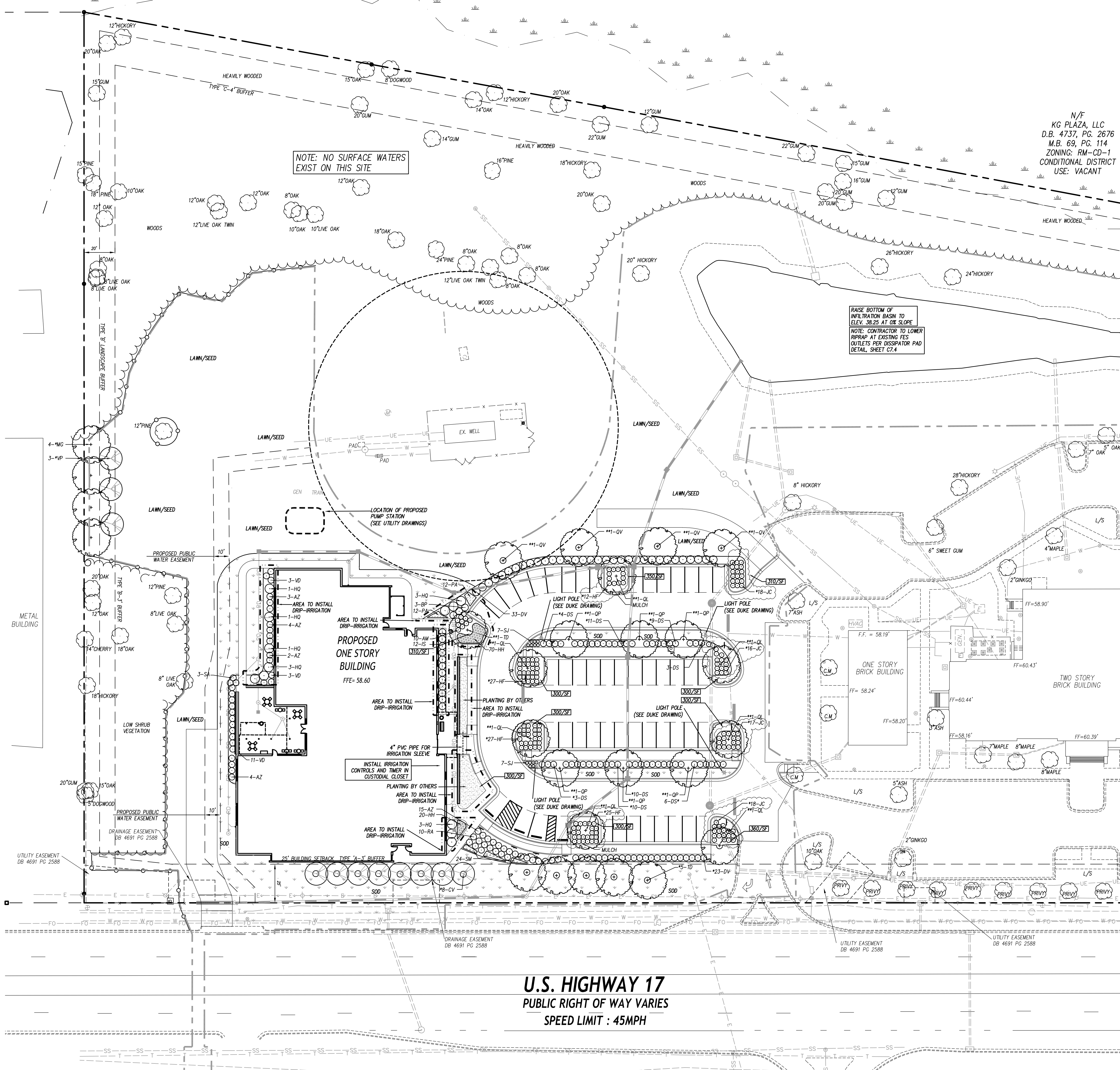
Approved Substitutions

The following manufacturers have been reviewed and accepted:

- 1. None at this time.

Pender County Library, Hampstead Branch
Addendum 3

End of Addendum 3



LANDSCAPE REQUIREMENTS CALCULATIONS

REQUIRED ALONG U.S. HIGHWAY 17
 BUFFER A-3: 1 CANOPY TREE AND 2 UNDERSTORY TREES WITH AT LEAST 98% LAWN COVERAGE PER 100/LF
PROVIDED ALONG U.S. HIGHWAY 17 (*) PER 425/LF
 (3) CANOPY TREES
 (8) UNDERSTORY TREES

REQUIRED ALONG SIDE YARD ALONG EASTERN BOUNDARY
 BUFFER B-3: 1 CANOPY TREE AND 2 UNDERSTORY TREES WITH AT LEAST 98% LAWN COVERAGE PER 100/LF
PROVIDED ALONG SIDE YARD ALONG EASTERN BOUNDARY
 TOTAL BUFFER LENGTH = 570/LF
 PROVIDING 34/LF
 REMAINING 476/LF CREDIT FOR EXISTING VEGETATION
 (4) CANOPY TREES
 (3) UNDERSTORY

REQUIRED ALONG REAR BUFFER EXISTING WOODS TO REMAIN
 [0000/SF] AREAS OF SQUARE FOOTAGE ON PARKING LOT ISLAND PER PENDER COUNTY UDO

N/F
 KG PLAZA, LLC
 D.B. 4737, PG. 2676
 M.B. 69, PG. 114
 ZONING: RM-CD-1
 CONDITIONAL DISTRICT
 USE: VACANT

PLANT LIST

KEY	QTY	PLANT NAME	MIN. SIZE	REMARKS	REQ.
CANOPY TREES					
**OL	7	OVERCUP OAK <i>Quercus lyrata</i>	2.5" CAL. 10' HT. MIN.	B&B STRAIGHT TRUNK FULL CROWN	**PARKING
**OP	6	WILLOW OAK <i>Quercus phellos</i>	2.5" CAL. 10' HT. MIN.	B&B STRAIGHT TRUNK FULL CROWN	**PARKING
**OV	4	SOUTHERN LIVE OAK <i>Quercus virginiana</i>	2.5" CAL. 10' HT. MIN.	B&B STRAIGHT TRUNK FULL CROWN	**PARKING
**MG	4	SOUTHERN MAGNOLIA <i>Magnolia grandiflora</i>	2.5" CAL. 10' HT. MIN.	B&B STRAIGHT TRUNK FULL CROWN	**BUFFER A
**TD	6	BALD CYPRESS <i>Taxodium distichum</i>	2.5" CAL. 10' HT. MIN.	B&B STRAIGHT TRUNK FULL CROWN	**BUFFER A
UNDERSTORY TREES					
**CV	8	AMERICAN FRINGE TREE <i>Chionodoxa fringens</i>	1.5" CAL. 8' HT. MIN.	B&B STRAIGHT TRUNK FULL CROWN	**BUFFER A
**FP	7	BLACKHAW <i>Viburnum prunifolium</i>	1" CAL. 6' HT. MIN.	B&B STRAIGHT TRUNK FULL CROWN	**BUFFER A
SHRUBS					
AM	10	BLACK CHOKERBERRY <i>Aronia melanocarpa 'Low Scope Mound'</i>	12"-15" HT. CONT.	FULL PLANTS	
AZ	28	AUTUMN MOONLIGHT ENCORE, AZALEA <i>Azalea x 'Autumn Moonlight'</i>	18"-24" HT. CONT.	FULL PLANTS	
BP	3	PUSTER PINKER BUTTERFLY BUSH <i>Buddleia 'Puster Piker'</i>	18"-24" HT. CONT.	FULL PLANTS	
DV	56	DISTYLUM 'Vintage Jade'	18"-24" HT. CONT.	FULL PLANTS	
DS	53	DISTYLUM 'Spring Frost'	18"-24" HT. CONT.	FULL PLANTS	**PARKING SCREEN
HO	12	ALICE OAKLEAF HYDRANGEA <i>Hydrangea quercifolia 'Alice'</i>	24"-36" HT. CONT.	FULL PLANTS	
**HF	91	ST. JOHN'S WORT <i>Hypericum frondosum 'Sunburst'</i>	12"-15" HT. CONT.	FULL PLANTS	
**JS	12	SCORPIO ANISE <i>Wittium 'Scorpio'</i>	24" HT. CONT.	FULL PLANTS	
**JC	69	PARSON'S JUNIPER <i>Juniperus chinensis 'Parsoni'</i>	12"-15" HT. CONT.	FULL PLANTS	
RA	10	COASTAL AZALEA <i>Rhododendron atlanticum</i>	18"-24" HT. CONT.	FULL PLANTS	
SA	3	DWARF PALMETTO <i>Sabal Minor</i>	12"-18" HT. CONT.	FULL PLANTS	
SJ	14	MAGIC CARPET SPIRAEA <i>Spiraea japonica 'Magic Carpet'</i>	12"-15" HT. CONT.	FULL PLANTS	
VD	17	DAVID VIBURNUM <i>Viburnum davidii</i>	18"-24" HT. CONT.	FULL PLANTS	
GRASSES / PERENNIALS					
HH	90	HAPPY RETURN DAYLILY <i>Hemerocallis 'Happy Returns'</i>	12"-15" HT. CONT.	FULL PLANTS MATCHING 2' O.C.	
PA	24	DWARF FOUNTAIN GRASS <i>Pennisetum alopecuroides 'Cassian'</i>	12"-18" HT. CONT.	FULL PLANTS MATCHING 2' O.C.	
SM	24	HOT LIPS SALVIA <i>Salvia microphylla 'Hot Lips'</i>	12"-15" HT. CONT.	FULL PLANTS MATCHING 2' O.C.	
TIF-TUF BERBERIA SOD SEE DETAIL SHEET C-7.1					
TREE PROTECTION FENCE, SEE EROSION CONTROL PLANS					
SEE SHEET C7.1 FOR DETAILS AND ADDITIONAL INFORMATION. GRAPHIC SYMBOLS SUPERSEDE WRITTEN QUANTITIES WHERE DISCREPANCIES OCCUR. * PLANTS REQUIRED BY MUNICIPALITY CODE/AJDO.					
CONTRACTOR TO PROVIDE 18" DEEP 50/50 MIX OF TOPSOIL AND ORGANIC COMPOST. DRIP IRRIGATION TO BE INSTALLED IN THESE AREAS. PLEASE SEE SPEC FOR ADDITIONAL INFORMATION, PLANTS AND MULCH PROVIDED BY OTHERS.					

SAWYER SHERWOOD & ASSOCIATE ARCHITECTURE
 124 Market Street
 Wilmington, NC 28401
 910 762-0892
 s2a3.com

CLH DESIGN, P.A.
 450 Regency Forest Drive
 Suite 100
 Cary, North Carolina 27518
 Phone: (919) 318-8716
 Fax: (919) 318-8708
 LA: C-198
 PE: C-1985

CHEATHAM AND ASSOCIATES, P.A. CONSULTING ENGINEERS
 1412 ENTERPRISE DRIVE
 WILMINGTON, NORTH CAROLINA 28405
 PHONE: (910) 452-4210
 FAX: (910) 452-4211
 OFFICE@CHEATHAMPA.COM
 WWW.CHEATHAMPA.COM
 NC LICENSE# C-1073

WOODS ENGINEERING
 Consulting Structural Engineers
 254 North Front Street
 Suite 201
 Wilmington, NC 28401
 Phone: 910.343.8007
 Fax: 910.343.8088
 www.woodseng.com

ReThinking Libraries
 508 Villanova Ct
 Fort Collins, CO 80525
 317-509-3268
 rethinkinglibraries.org



Pender County
 Library
 Hampstead Branch

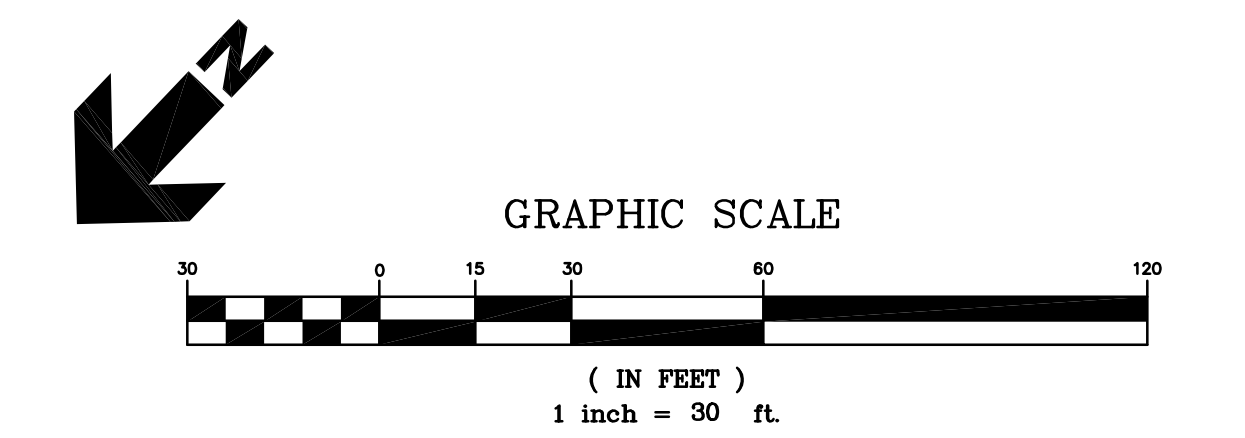
15146 US Hwy 17
 Hampstead, NC 28443

Construction Drawings

Issue Date: November 7, 2025

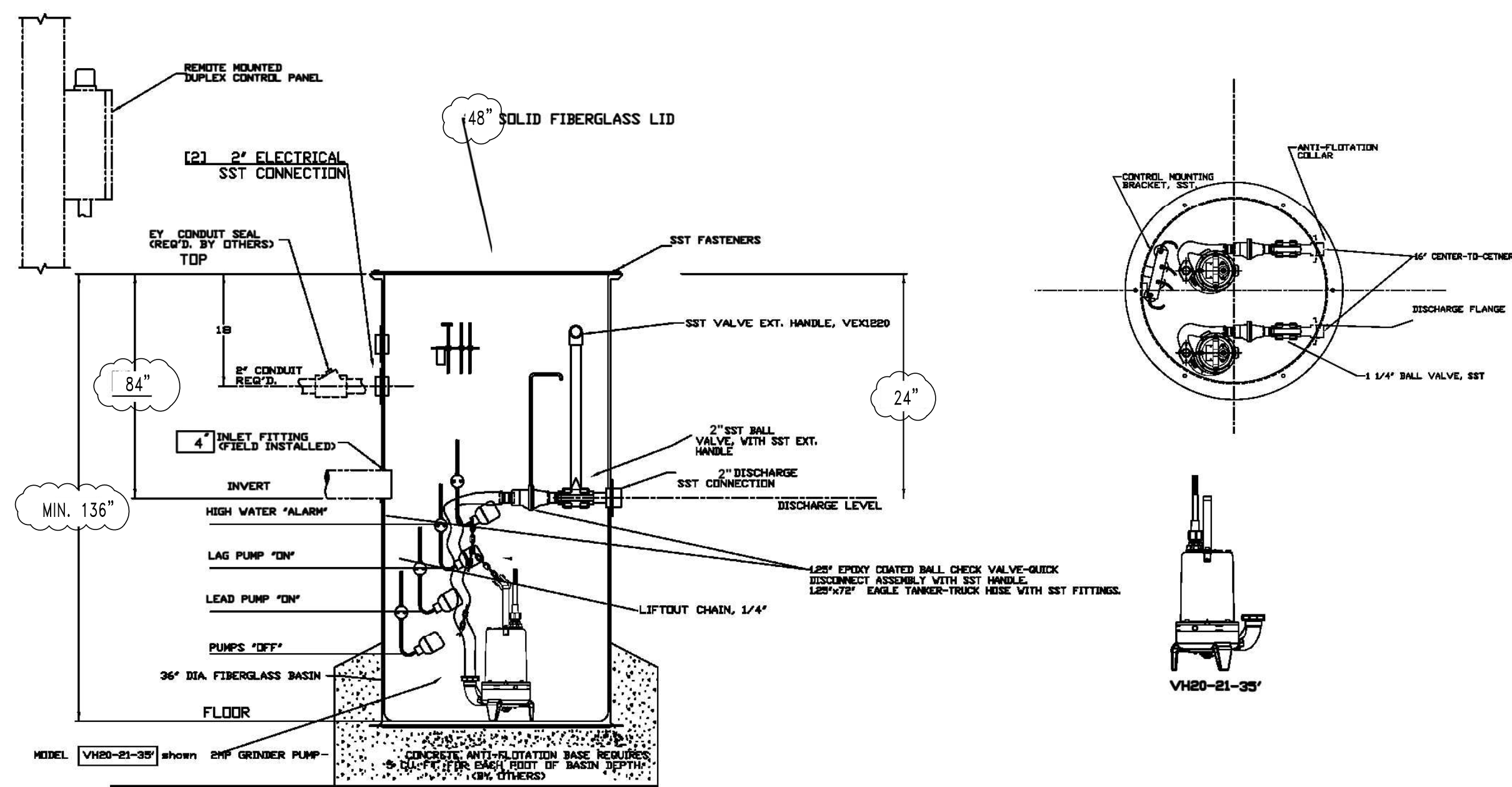
Landscape Plan

Rev.	Date	Notes
1	12/9/25	TRC COMMENTS

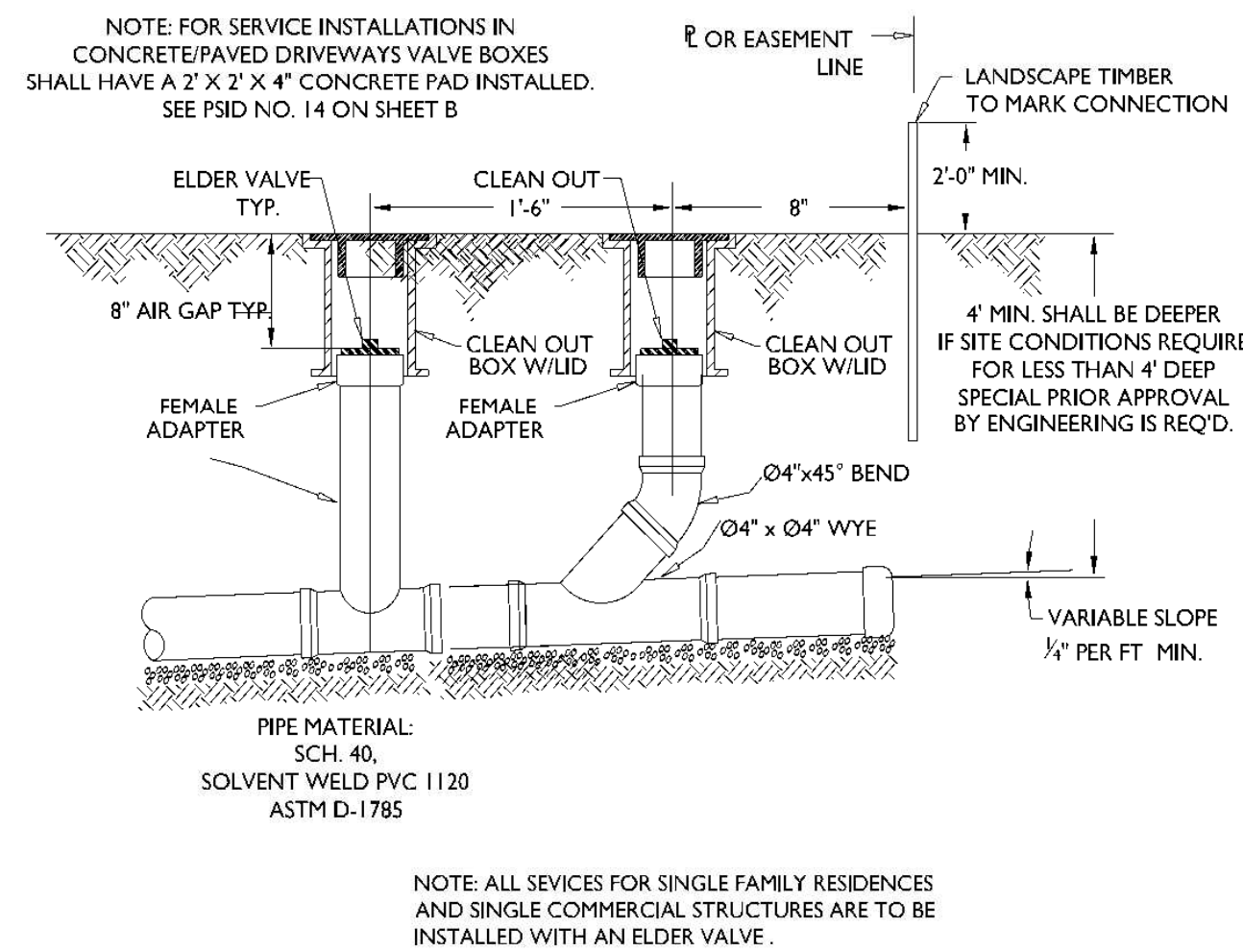


U.S. HIGHWAY 17
 PUBLIC RIGHT OF WAY VARIES
 SPEED LIMIT : 45MPH

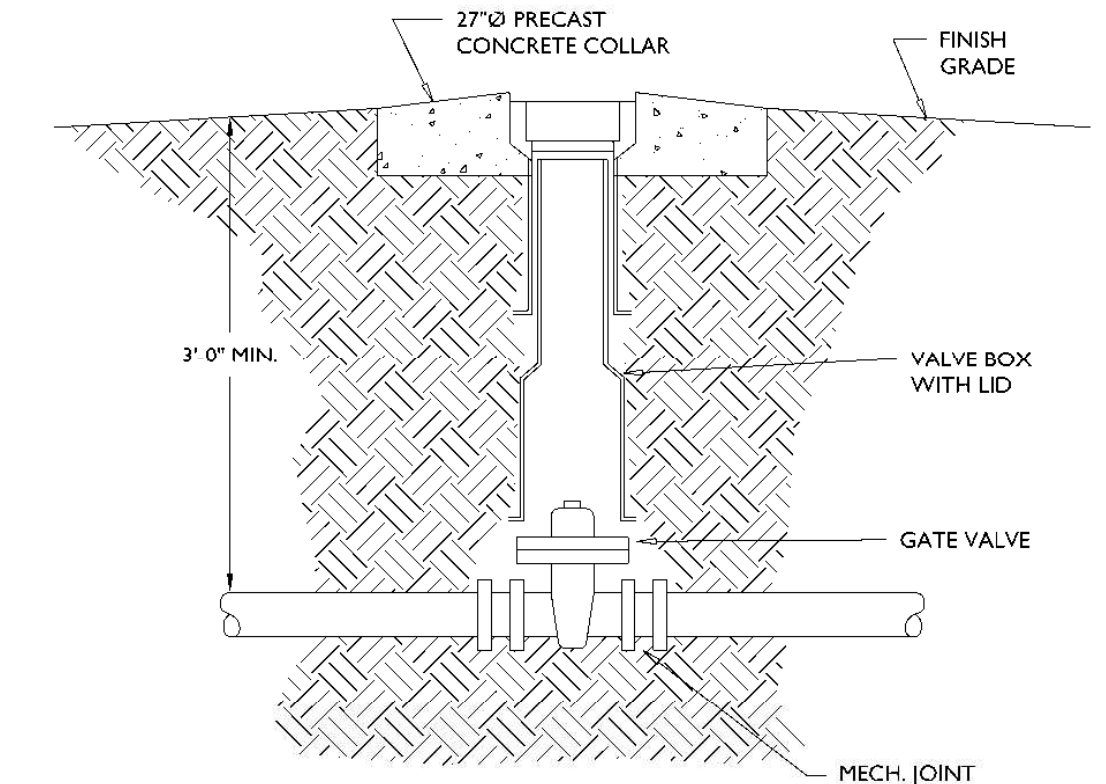
C5.0



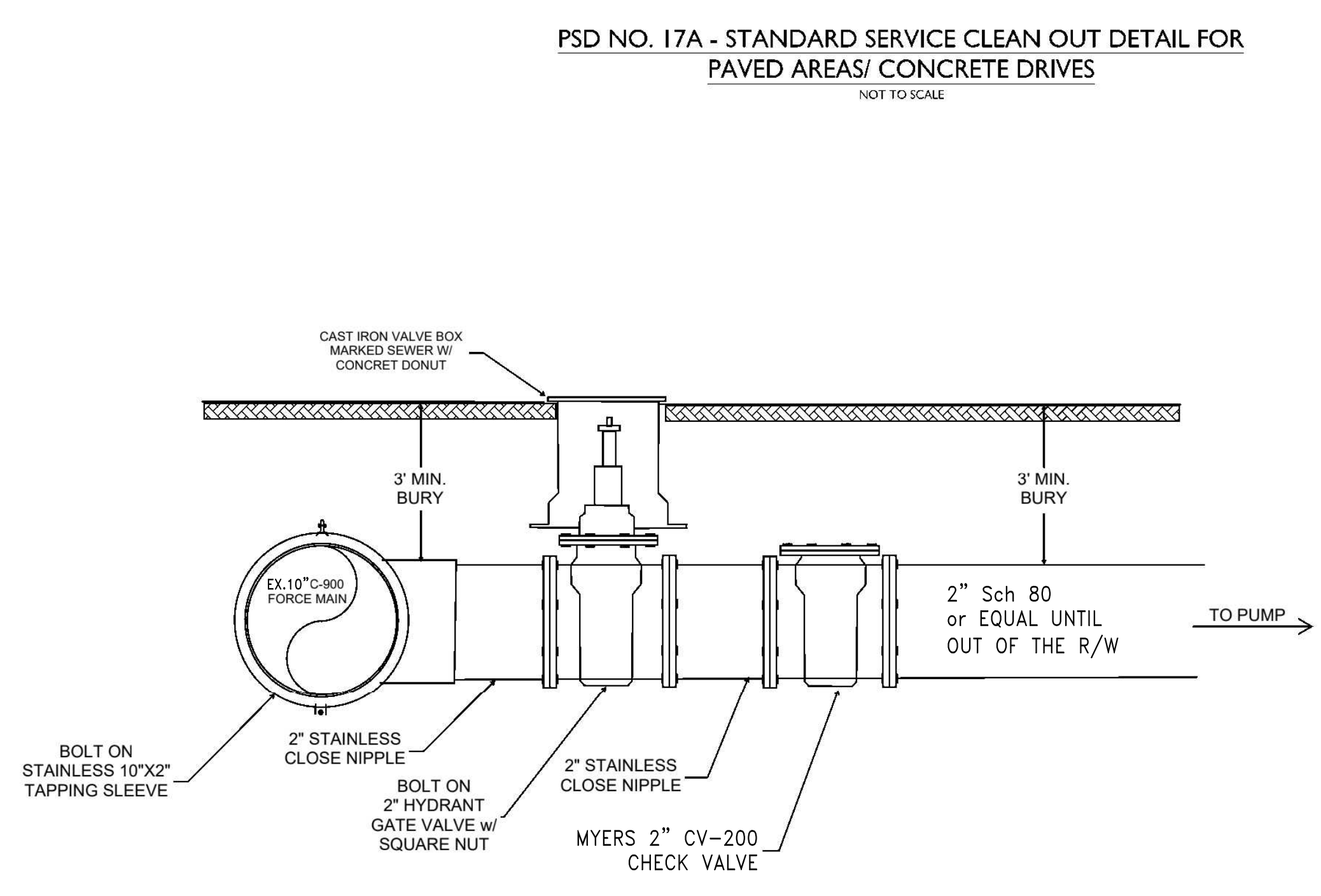
PSD NO. 12 - CAST IRON VALVE BOX DETAIL
NOT TO SCALE



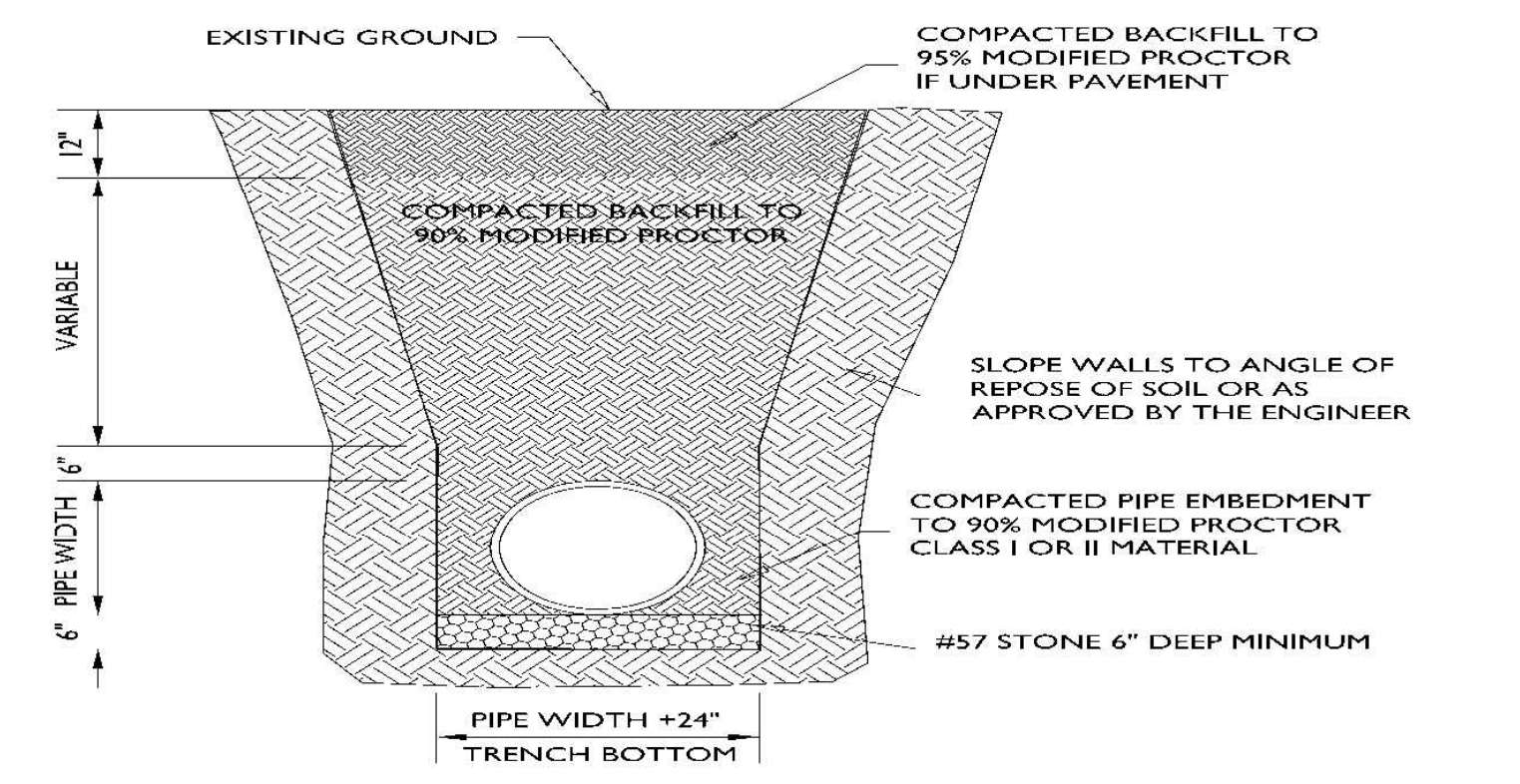
PSD NO. 13 - HEAVY DUTY CAST IRON VALVE BOX LID
DETAIL
NOT TO SCALE



PSD NO. 15 - GATE VALVE DETAIL
NOT TO SCALE



PSD NO. 17A - STANDARD SERVICE CLEAN OUT DETAIL FOR PAVED AREAS/ CONCRETE DRIVES
NOT TO SCALE



PSD NO. 9 - PIPE TRENCH AND BEDDING DETAIL
NOT TO SCALE



TYPICAL LATERAL ASSEMBLY
NTS

PSD NO. 9 - PIPE TRENCH AND BEDDING DETAIL
NOT TO SCALE

NOTES:

- SEPARATE METER BASE IS NOT REQUIRED IF PRIVATELY OWNED.
- ALL CONDUITS TO BASIN SHALL BE INSTALLED TO ENSURE POSITIVE DRAINAGE TOWARD BASIN.
- ALL MOUNTING HARDWARE SHALL BE STAINLESS STEEL.
- NUMBER AND SIZE OF CONDUITS INTO BASIN SHALL BE AS REQUIRED BY CONTROLLER MANUFACTURER AND THE NATIONAL ELECTRIC CODE.
- ALL CONDUITS TO BE PLUGGED WITH DUCT SEAL AT BOTH ENDS.
- ALL WIRING FROM THE BASIN (INCLUDING PUMP WIRE AND FLOAT WIRES) SHALL BE CONTINUOUS TO PUMP CONTROL PANEL (NO SPLICES).
- CONTRACTOR SHALL SUBMIT SHOP DRAWINGS OF DUPLEX CONTROL PANEL, GENERATOR CONNECTION, AND PUMPS TO ENGINEER FOR REVIEW AND APPROVAL PRIOR TO PURCHASE.
- LIFT STATION SITE PLAN DETAIL IS GENERIC. CONTRACTOR SHALL CONSULT WITH BUILDER/OWNER TO CONFIRM PROPOSED LAYOUT.
- ELECTRICAL SERVICE TO STATION SHALL BE 208 VOLT, SINGLE PHASE POWER.
- CELLULAR AUTO DIALER SHALL BE AS APPROVED BY SEWER PROVIDER. IF REQUIRED.
- CONTRACTOR SHALL VERIFY THE DEPTH AND LOCATION OF EXISTING UTILITIES TO INSURE THAT SETBACKS BY 15A NCAC 02T.0305 (F) CAN BE MET.
- THE DEPTH AND LOCATION OF EXISTING FORCE MAIN SHALL BE DETERMINED BY CONTRACTOR AND REVIEWED BY SEWER PROVIDER.
- THE PUMP STATION RIM SHALL BE SEALED. THE CONTROL PANEL AND VENT SHALL BE LOCATED 2' ABOVE THE BASE FLOOD ELEVATION.
- CONTRACTOR SHALL FURNISH MATERIALS AND LABOR CONSISTENT WITH SEWER PROVIDER APPROVED SPECIFICATIONS.
- NO SEWER APPURTENANCE SHALL BE LOCATED WITHIN 100 FEET OF ANY EXISTING WELL.
- PRIOR TO SCHEDULING THE TAP OF THE SEWER MAIN, ALL PARTS FOR THE TAP MUST BE VERIFIED TO BE OF PLURIS SANDARD.
- PRIOR TO TAPPING THE SEWER MAIN, THE TAPPING SLEEVE AND GATE VALVE MUST BE PRESURE TESTED, AFTER WHICH THE TAP CAN BE MADE, AND THE COUPON RETRIEVED.
- AFTER INSTALLATION OF THE SEWER MAIN AND CHECK VALVE, THEY WILL NEED TO BE PRESURE TESTED AS WELL.

BASIS OF DESIGN MODEL

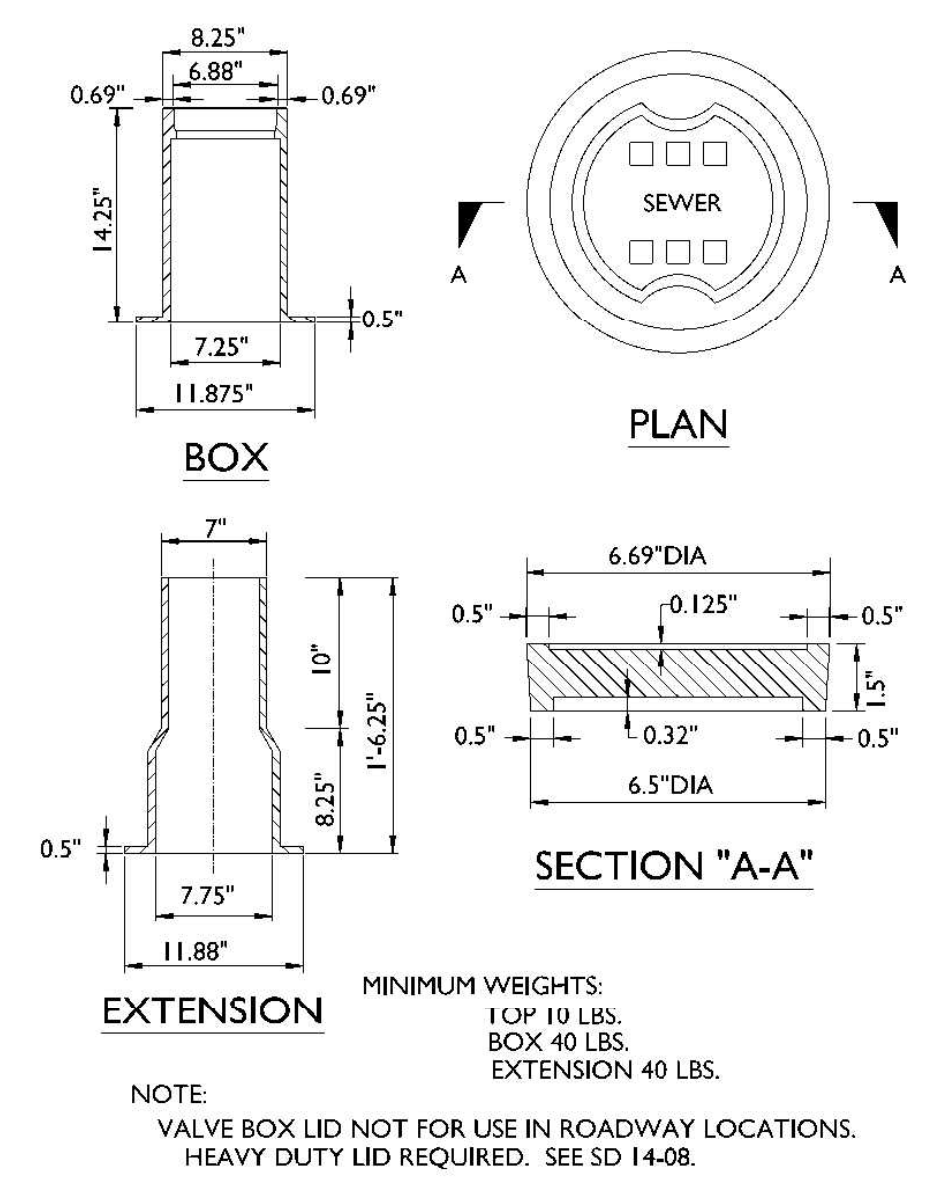
Model: [2] Myers VH20-21-35, 2 HP, 208V, 1 Phase, 3450 RPM, 1-1/4" Discharge High Head Grinder Pump w. 35' Cord

Control Panel: [1] Duplex control panel in a NEMA-4X fiberglass enclosure complete with separate circuitry, start/run capacitors, HOAs, alternator, audible/visual alarm w. test switch and push to silence, UL 698A label

Basin: (1) 48" x MIN 136" Fiberglass basin complete with fiberglass antifloatation, 300 PSF solid fiberglass cover, duplex parallel system design, 1-1/4" flex hose discharge with quick disconnect and valve for shut off, parallel discharge 24" below top elevation through 1-1/4" SST couplings, SST float bracket

Accessories: [3] 30" Floats
[1] 4" Inlet Grommet (shipped loose for field installation)

Notes: 1. A dedicated circuit breaker is required in the control panel for alarm circuitry only; separate from breaker for controls and pump motors.
2. Float switch cables are to be connected to intrinsically safe relays.



SAWYER SHERWOOD & ASSOCIATE ARCHITECTURE

CLH DESIGN, P.A.

CHEATHAM AND ASSOCIATES, P.A. CONSULTING ENGINEERS

WOODS ENGINEERING Consulting Structural Engineers

ReThinking Libraries

RSC

NORTH CAROLINA PROFESSIONAL SEAL 23044 12/11/25 ENGINEER ANTHONY C. BRIAM

DYbXYf7 ci bhm @fufm <Ua dgYUX '6fUbWx

Di flg 89H5 @%

1 - "