

12/17/25

**Addendum No. 1 for:**

Strikes LLC  
Strikes Entertainment Complex  
5613 Oleander Drive  
Wilmington, NC 28403

**Attention All Bidders**

The following items shall take precedence over the drawings and specifications for the above-named project and shall become part of the Contract Documents. Any original item shown on the drawings or included in the specifications that is not specifically amended, modified, voided, or superseded herein shall remain in full force and effect.

This addendum includes **responses to bidder questions, clarifications, and revisions**, which are organized **by CSI Division** and issued for coordination during the bidding period.

**I. All Contractors**

A. **Bid Date:** No change to the current bid date.

**II. Changes to Specifications**

A. Refer to **Appendix – Specification Additions, Clarifications, and Revisions**, including **responses to bidder questions provided within the individual CSI Divisions listed herein.**

**III. Changes and Clarifications to Drawings**

- A. This addendum includes **clarifications, responses to bidder questions, and revised drawings** issued for bidding and coordination.
- B. Drawing sheets issued or revised as part of this addendum are identified below.
- C. All revised drawings shall supersede previous versions of the same sheet number.
- D. Contractor shall incorporate all revised sheets and this addendum, including all Division-based clarifications, into the bid set and final Contract Documents.

**Drawing sheets issued or revised by this addendum:**

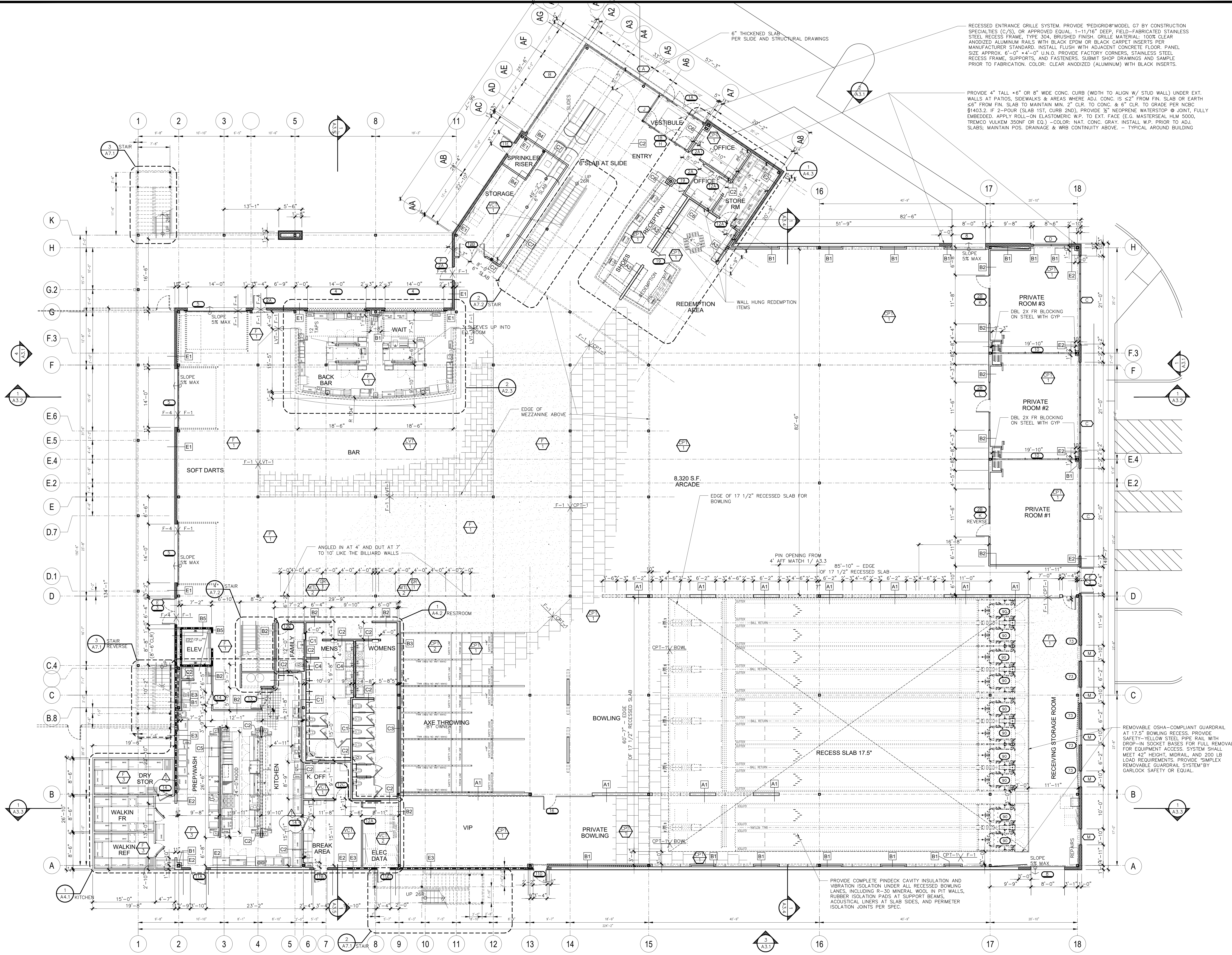
A2.1, A2.2, A4.1, A9.3

**Acknowledgement**

The undersigned Bidder acknowledges receipt of **Addendum No. 1**, including all Division-based responses to bidder questions, and agrees that it shall be included as part of the Contract Documents. Failure to acknowledge this addendum may be grounds for bid rejection.

**Bidder:** \_\_\_\_\_

**By:** \_\_\_\_\_ **Date:** \_\_\_\_\_



RECESSED ENTRANCE GRILLE SYSTEM. PROVIDE PEDIGRID® MODEL G7 BY CONSTRUCTION SPECIALTIES (C/S), OR APPROVED EQUAL. 1-1/16" DEEP, FIELD-FABRICATED STAINLESS STEEL RECESS FRAME, TYPE 304, BRUSHED FINISH. GRILLE MATERIAL: 100% CLEAR ANODIZED ALUMINUM RAILS WITH BLACK EPDM OR BLACK CARPET INSERTS PER MANUFACTURER STANDARD. INSTALL FLUSH WITH ADJACENT CONCRETE FLOOR. PANEL SIZE APPROX. 6'-0" x 4'-0" U.N.O. PROVIDE FACTORY CORNERS, STAINLESS STEEL RECESS FRAME, SUPPORTS, AND FASTENERS. SUBMIT SHOP DRAWINGS AND SAMPLE PRIOR TO FABRICATION. COLOR: CLEAR ANODIZED (ALUMINUM) WITH BLACK INSERTS.

PROVIDE 4" TALL x 6" OR 8" WIDE CONC. CURB (WIDTH TO ALIGN W/ STUD WALL) UNDER EXT. WALLS AT PATIOS, SIDEWALKS & AREAS WHERE ADJ. CONC. IS 22" FROM FIN. SLAB OR EARTH ≤6" FROM FIN. SLAB TO MAINTAIN MIN. 2" CLR. TO CONC. & 6" CLR. TO GRADE PER NBC §1403.2. IF 2-POUR (SLAB 1ST, CURB 2ND), PROVIDE 3/4" NEOPRENE WATERSTOP @ JOINT, FULLY EMBEDDED. APPLY ROLL-ON ELASTOMERIC W.P. TO EXT. FACE (E.G. MASTERSEAL-HLM 5000, TREMCO VALKEM 3500F OR E.O.) - COLOR: NAT. CONC. GRAY. INSTALL W.P. PRIOR TO ADJ. SLABS; MAINTAIN POS. DRAINAGE & WRB CONTINUITY ABOVE. - TYPICAL AROUND BUILDING

PROVIDE COMPLETE PINDECK CAVITY INSULATION AND VIBRATION ISOLATION UNDER ALL RECESSED BOWLING LANES, INCLUDING R-30 MINERAL WOOL IN FIT WALLS, RUBBER ISOLATION PADS AT SUPPORT BEAMS, ACOUSTICAL LINERS AT SLAB SIDES, AND PERIMETER ISOLATION JOINTS PER SPEC.

FIRST FLOOR PLAN 33,568 sf

SCALE 1/8" = 1'-0"

11/06/25 - SECTIONS  
 11/21/25 BIDDING AND OWNER REV.  
 12/09/25 PLAN CHECK  
 12/17/25 ADDENDUM 1



Custom Homes,  
 Destination Retail Environments  
 and Site Planning

Wilmington  
 North Carolina

Ph 910  
 409-5304



ALL FEDERAL, STATE, AND LOCAL CODES, ORDINANCES, REGULATIONS ETC. SHALL BE CONSIDERED AS PART OF SPECIFICATIONS FOR THIS BUILDING AND SHALL TAKE PRECEDENCE OVER ANYTHING SHOWN, DESCRIBED, OR IMPLIED WHERE SAME ARE AT VARIANCE

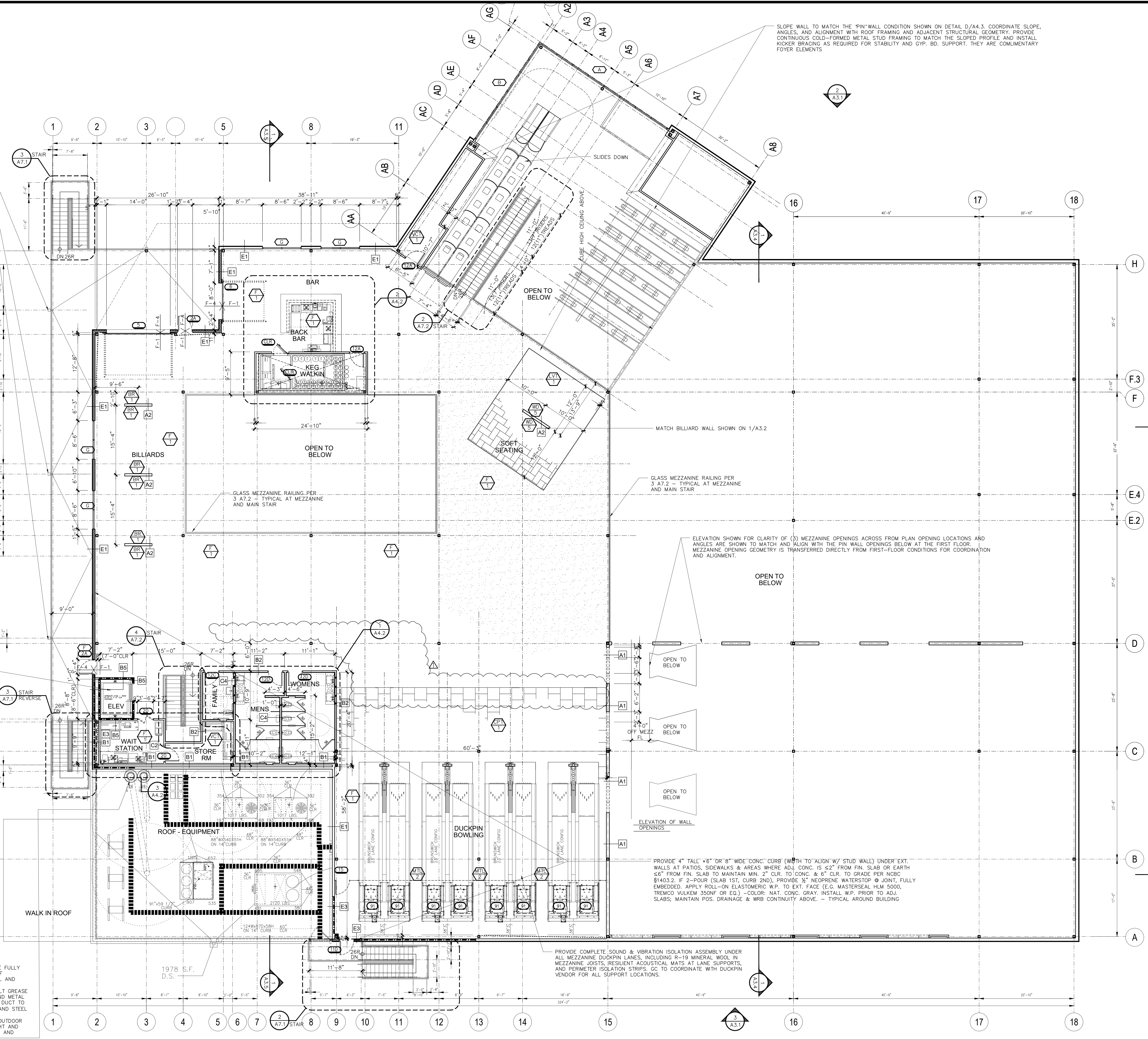
STRIKES ENTERTAINMENT COMPLEX  
 5613 Oleander Drive  
 WILMINGTON, NC  
 28403

Date \_\_\_\_\_ Scale As Noted  
 Drawn \_\_\_\_\_ Job \_\_\_\_\_  
 Sheet \_\_\_\_\_

SLOPE STEEL FRAMING TO DIRECT WATER TO (3) DOWNSPOUT LOCATIONS. CONCRETE TO MATCH SLOPE AT EACH LOW POINT. CUT OPENINGS IN GUARDRAIL BASE PLATE FOR DRAIN PATH INTO COLLECTOR BELOW.

GC TO PROVIDE COMPLETE HOISTWAY, PIT, STEEL SUPPORTS, EMBEDS, BLOCKING, ELECTRICAL AND COORDINATION FOR SCHINDLER (OR EQUAL) PER LOAD TABLES AND PURCHASER NOTES. GC TO PURCHASE AND INSTALL ELEVATOR PACKAGE AND PROVIDE FULL SUPPORT FOR INSTALLATION.

ALL GREASE DUCT BELOW THE ROOF SHALL BE FULLY WELDED PER NFPA 96. RUN DUCT UNDER ROOF STRUCTURE TO EXTERIOR WALL, THEN UP WALL AND TERMINATE 3'-0" ABOVE MEZZANINE PARAPET. AT ROOF PENETRATION PROVIDE FACTORY-BUILT GREASE DUCT CURB, FULL TPO FLASHING UP CURB, AND METAL COUNTERFLASHING. STRAP EXTERIOR VERTICAL DUCT TO WALL @ 4'-0" O.C. MAX WITH FRT BLOCKING AND STEEL BACKING PLATES BEHIND CLADDING. MAINTAIN 10'-0" MIN SEPARATION FROM ALL OUTDOOR AIR INTAKES. SEAL ALL PENETRATIONS AIR-TIGHT AND GREASE-TIGHT. COORDINATE WITH CAPTIVEAIRE AND STRUCTURAL.



MEZZANINE FLOOR PLAN 12,314 sf

SCALE 1/8" = 1'-0"

11/06/25 - SECTIONS  
11/21/25 BIDDING AND OWNER REV.  
12/09/25 PLAN CHECK  
12/17/25 ADDENDUM 1



Custom Homes,  
Destination Retail Environments  
and Site Planning  
  
Wilmington  
North Carolina  
  
Ph 910  
409-5304



ALL FEDERAL, STATE, AND LOCAL CODES, ORDINANCES, REGULATIONS ETC. SHALL BE CONSIDERED AS PART OF SPECIFICATIONS FOR THIS BUILDING AND SHALL TAKE PREFERENCE OVER ANYTHING SHOWN, DESCRIBED, OR IMPLIED WHERE SAME ARE AT VARIANCE

STRIKES ENTERTAINMENT COMPLEX  
5613 Oleander Drive  
WILMINGTON, NC  
28403

MEZZANINE FLOOR PLAN

Date \_\_\_\_\_ Scale As Noted  
Drawn \_\_\_\_\_ Job \_\_\_\_\_  
Sheet \_\_\_\_\_

A2.2

KEY	FURN. BY GC	FURN. BY OWNER	INSTALL BY GC	INSTALL BY OWNER	QTY.	ITEM NAME	MANUFACTURER OR EQUAL	MODEL NUMBER	POWER	WATER		WASTE	DIRECT/INDIRECT	REMARKS	MISC. NOTES	NSF
										HOT	COLD					
1					1	P.O.S. - CASH REGISTER	VARIAS		(2) DATAS 120v/60/1 1A					1" PULL PIPE FOR DATAS BY GC	NSF	
2					1	TICKET PRINTER FROM POS	VARIAS		120v/60/1 1A						NSF	
3					1	72" FOOD PREP REFR.	AVANTCO	APST-72	115v/60/1 2.5						NSF	
4					1	60" FOOD PREP REFR.	AVANTCO	APT-60-HC	115v/60/1 5.4						NSF	
5					1	48" PIZZA PREP REFR.	AVANTCO	APPT-48-HC	115v/60/1 3.5						NSF	
6					1	48" SALAD PREP REFR.	AVANTCO	APT-48-HC 4	115v/60/1 4.9						NSF	
7					1	84" CHEF BASE REFR.	AVANTCO	CBE-84-HC	115v/60/1 6.84						NSF	
8					1	54" 2 DR REFR.	AVANTCO	A-49R-HC	115v/60/1 6.2						NSF	
9					1	27" WORKTOP REFR.	AVANTCO	AWT-27R-HC	115v/60/1 2.2						NSF	
10					1	49" ICECREAM FREEZER W/ 1- 2-Tub Holder Basket	AVANTCO	DFC13-HCL	115v/60/1 4.0						NSF	
11					3	59" GLASS DOOR BOTTLE COOLER	AVANTCO	UBB-2G-HC	115v/60/1 3.5						NSF	
12					1	48" GLASS DOOR BOTTLE COOLER	AVANTCO	UBB-48G-HC-S	115v/60/1 3.5					ORDER AS LOCKABLE	NSF	
13					4	24" MUG FROSTER ADD 2"CASTERS	AVANTCO	GF25-HC-S	115v/60/1 9.9						NSF	
14					2	25" HORIZONTAL BOTTLE COOLER	AVANTCO	HBB-25-HC	115v/60/1 7.2						NSF	
15A					1	27" WORKTOP FREEZER	AVANTCO	SS-WT-27F-HC	115v/60/1 3.6						NSF	
15B					1	31" REACH IN BLAST CHILLER	AVANTCO	SF-10	115v/60/1 16						NSF	
16					1	24" GREASE HOOD - 2 12" PER DWG	CAPTIVE AIR							WITH MAKEUP AIR	NSF	
17					1	MEAT SLICER	HOBART	EDGE10	120v/60/1 15						NSF	
18					2	BUNN BREWER	BUNN	CWF15-3	120v/60/1 14						NSF	
19					6	BLENDER	VITAMIX	06B255	120v/60/1 12A						NSF	
20					4	12 X 21 BLENDER STATION	BK RESOURCES	UB4-21-BDMX12							NSF	
21					4	24" DIPPER / RINSER / DUMP	ADVANCE TABCO	PRSR-25-24						130 DEG CLEANING TEMP. WATER	NSF	
22					1	22" DUMP SINK	REGENCY	600S117FW						130 DEG CLEANING TEMP. WATER	NSF	
					1	T&S 8" C WALL 3 1/2" GOOSENECK FAUCET									NSF	
					1	T&S B-3952 Twist Waste Valve, 3 1/2" Sink Opening, 2" Drain		Outlet							NSF	
23					2	60" BAR 3 (14X10) COMP SINK	REGENCY	600B31014213						130 DEG CLEANING TEMP. WATER	NSF	
					2	T&S 4" Center 8" Spread Spout, Wall Mount									NSF	
24A					1	3' DISHTABLE CLEAN R SIDE	John Boos	CDT6-S36SBK R						130 DEG CLEANING TEMP. WATER	NSF	
24B					1	103" 3 COMP SINK WITH 24" DB 18X24X14 LEFT TO RIGHT - R SIDE DW	John Boos	DT3B18244-2D24L						130 DEG CLEANING TEMP. WATER	NSF	
					1	T&S Brass B-0133-ADF12-B Pre-Rinse Unit		Outlet							NSF	
					3	T&S B-3952 Twist Waste Valve, 3 1/2" Sink Opening, 2" Drain									NSF	
25					3	30X48 SS WT WITH SINK ON R	REGENCY	60S13048R						WITH T&S APPROPRIATE FAUCET	NSF	
26					1	LOW TEMP PASSTHRU DW W/BOOSTER	JACKSON	Conservor XL-E-LTH	120v/60/1 31.3A					130 DEG CLEANING TEMP. WATER RENTED BY OWNER	NSF	
27					2	LOW TEMP BAR DW W/BOOSTER	JACKSON	DELTA 5-E	120v/60/1 16A					130 DEG CLEANING TEMP. WATER RENTED BY OWNER	NSF	
28					10	HAND SINK WITH SPLASHGUARDS SOAP DISPENSER/BY SERVEPRO TOWEL ROLL DISPENSER/BY SERVEPRO	REGENCY	HS12SP TOUCHLESS TOUCHLESS						130 DEG - ADD CROSS MIXER AND SET TO 110 DEG AT SINK	NSF	
29A					1	30X96 Beverage Table W R SINK	REGENCY	600TBV3096R						130 DEG CLEANING TEMP. WATER AND TS FAUCET	NSF	
29B					1	30X60 Beverage Table W R SINK	REGENCY	600TBV3060R						130 DEG CLEANING TEMP. WATER AND TS FAUCET	NSF	
29C					1	30X48 Beverage Table W R SINK	REGENCY	600TBV3048R						130 DEG CLEANING TEMP. WATER AND TS FAUCET	NSF	
29D					1	24X72 ENCL. OPEN BASE TABLE NO B.S.	REGENCY	600eb12472							NSF	
29E					1	24X36 LOCKABLE BASE TABLE W/ B.S.	REGENCY	600EBT2436D							NSF	
29F					1	24X48 LOCKABLE BASE TABLE W/ B.S.	REGENCY	600EBT2448							NSF	
29G					4	24X48 LOCKABLE BASE TABLE NO B.S.	REGENCY	600EBT2448R							NSF	
30					1	LARGE KITCHEN ICE MAKER W/ FILTER	HOSHIZAKI	KM - 1301SAJ	208/230v/60/1 12.4A					W/ MANUFACTURER RECOMMENDED WATER FILTER	NSF	
31					1	SMALL BAR ICE MAKER W/ FILTER	HOSHIZAKI	KM - 161 BAJ	115v/60/1 7.1A					W/ MANUFACTURER RECOMMENDED WATER FILTER	NSF	
32					1	TEA BREWER	BUNN	TB60	120v/60/1 14.4A					W/ MANUFACTURER RECOMMENDED WATER FILTER	NSF	
33A					4	18X36 Underbar Ice Bin W/ Cold Plate	REGENCY	600IB1836							NSF	
					4	WITH SINGLE SS SPEED RAIL	STEELTON STAINLESS	712B5536							NSF	
33B					1	18X30 Underbar Ice Bin W/ Cold Plate	REGENCY	600IB1830							NSF	
					1	WITH SINGLE SS SPEED RAIL	STEELTON STAINLESS	712B5530							NSF	
33C					1	18X24 Underbar Ice Bin	REGENCY	600IB1824KIT							NSF	
34					5	18 5 TIER SS LIQUOR DISPLAY	REGENCY	600LDR2318							NSF	
35					3	Corrugated Top Glass Rack Storage	REGENCY	600GRSU2324C							NSF	
36					3	FLAT Top Glass Rack Storage	REGENCY	600GRSU2324							NSF	
37A					3	FOUNTAIN 8 HEAD DRINK DISPENSOR	BY SODA PROVIDER	ICD 2300							NSF	
37B					4	SODA GUNS AT SPEED RAILS	BY SODA PROVIDER								NSF	
37C					4	SODA BOXRACKS 1	BY SODA PROVIDER								NSF	
38					16	SLIM JIM TRASH CAN 23 GAL	RUBBERMAID	23 GAL GRAY							NSF	
39A					12	TAP DRAFT TOWER	MICROMATIC	TT-U-12KR-11							NSF	
					15	3/4 DRIP TRAY WITH GLASS RINSE	MICROMATIC	51" CUSTOM PLATFORM DRIP TRAY							NSF	
39B					1	12 TAP WALL GLYCOL READY W/RINSE	MICROMATIC	KRONOS-12SSKRR							NSF	
40					1	GLYCOL POWER PACK - REMOTE COND.	MICROMATIC	MMPP4307-PKG-4	115v/60/1 14.5A						NSF	
					1	POWER PACK RACK	MICROMATIC	PPR-362448							NSF	
41					1	Infrared French Fry Warmer	AVANTCO	FFDS-1	120v/60/1 8.3A						NSF	
42					1	SOUP WARMER - 3 POT	VOLLRATH	72788	120v/60/1 13.3A						NSF	
43					3	ELECTRIC STRIP HEATER	WINCO	ESH36	120v/60/1 6.3A						NSF	
44					2	COUNTERTOP ELECTRIC PIZZA OVENS	BAKERS PRIDE	P44BL	208/230 3A/8A						NSF	
45					1	36" GAS CHARGRILL	SOUTHBEND	HDC-36		120000 BTU GAS					NSF	
46					1	36" GAS SALAMANDER BROILER	SOUTHBEND	P36-RAD		40000 BTU GAS					NSF	
47					1	48" GAS GRIDDLE	SOUTHBEND	HDC-48		120000 BTU GAS					NSF	
48					1	36" S-Series Restaurant GAS Range	SOUTHBEND	S36D		6,3000 BTU GAS					NSF	
49					4	GAS FRYER	PITCO	400		1150000 BTU GAS					NSF	
50					1	MICROWAVE	SOLWAVE	180MW1000SS	120v/60/1 8.3A						NSF	
51					1	BAKING SPEED OVEN	UNOX	XASW-03HS-SDDS	240v/60/1 28A						NSF	
52					2	PassThru Shelf/Overshelf - 24X132	REGENCY	600P75024132							NSF	
53A					1	SS DISH CABINET 18X72	REGENCY	600DC1872							NSF	
53B					2	SS DISH CABINET 18X96	REGENCY	600DC1896							NSF	
54A					1	SS 30X36 WORKTABLE W/1 1/2" B.S.	ADVTAB OR EQ	16 CA - 3045S							NSF	
54B					1	SS 30X48 WORKTABLE W/1 1/2" B.S.	ADVTAB OR EQ	16 CA - 3045S							NSF	
54C					2	SS 30X30 EQUIP STAND W/1 1/2" B.S.	REGENCY	600es3030g							NSF	
55A					5	TIER EPOXY GREEN METRO SHELF	REGENCY	24X42X74							NSF	
55B					5	TIER EPOXY GREEN METRO SHELF	REGENCY	24X48X74							NSF	
55C					5	TIER EPOXY GREEN METRO SHELF	REGENCY	30X36X74							NSF	
55D					5	TIER EPOXY GREEN METRO SHELF	REGENCY	30X48X74							NSF	
55E					5	TIER EPOXY GREEN METRO SHELF	REGENCY	30X60X74							NSF	
55F					5	TIER EPOXY GREEN METRO SHELF	REGENCY	12X48X74							NSF	
55G					2	WALL MOUNTED GR. EP. WIRE SHELF	REGENCY	18X36 BRACKETS						(2) MOUNT @ 4'-6" & 5'-8" / (1) MNT @ 5'-8"	NSF	
55H					2	WALL MOUNTED GR. EP. WIRE SHELF	REGENCY	18X42 BRACKETS						(2) MOUNT @ 4'-6" & 5'-8" / (1) MNT @ 5'-8"	NSF	
55I					5	TIER EPOXY GREEN METRO SHELF	REGENCY	24X30X74							NSF	
55J					7	WALL MOUNTED GR. EP. WIRE SHELF	REGENCY	18X48 BRACKETS						(2) MOUNT @ 4'-6" & 5'-8" / (1) MNT @ 5'-8"	NSF	
55K					3	TIER EPOXY GR. METRO SHELF-34"H	REGENCY	18X36X34H							NSF	
56					1	SS STAINLESS PLATE CART	ULINE	H-7491							NSF	
57					1	3 SHELF PLASTIC BUS CART	THUNDER	PLBC4019B							NSF	
58					1	36X36X12" TERRAZZO MOP SINK	TERRAZZO-WARE	THR-363612						130 DEG CLEANING TEMP. WATER AND TS FAUCET	NSF	
					1	8" MOP FAUCET	T&S	8A-0665-BSTR							NSF	
					1	36" MOP RACK	REGENCY	600MR36							NSF	
59A					5	SOLID SS 15" SHELVES	REGENCY	15 X 48		</						



Custom Homes,  
 Destination Retail Environments  
 and Site Planning

Wilmington  
 North Carolina

Ph 910  
 409-5304



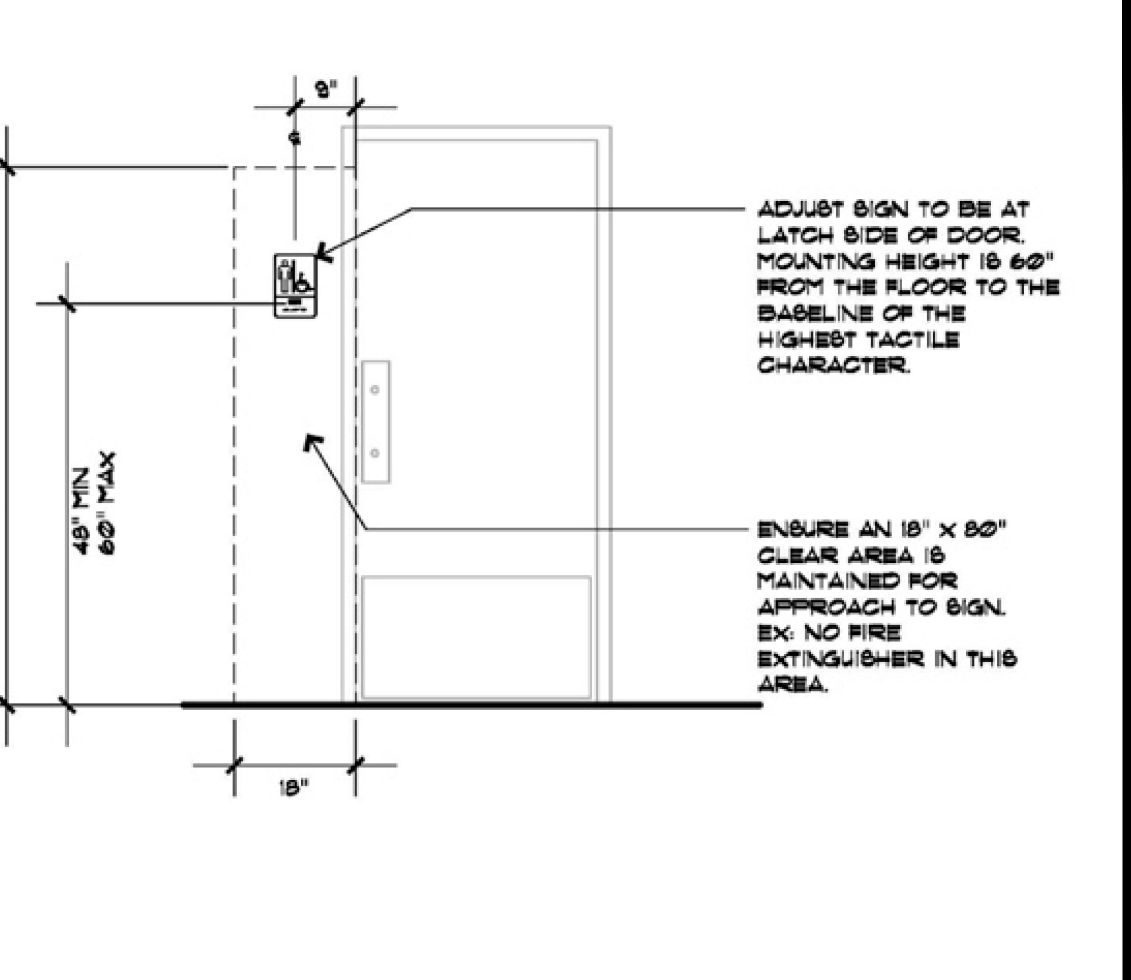
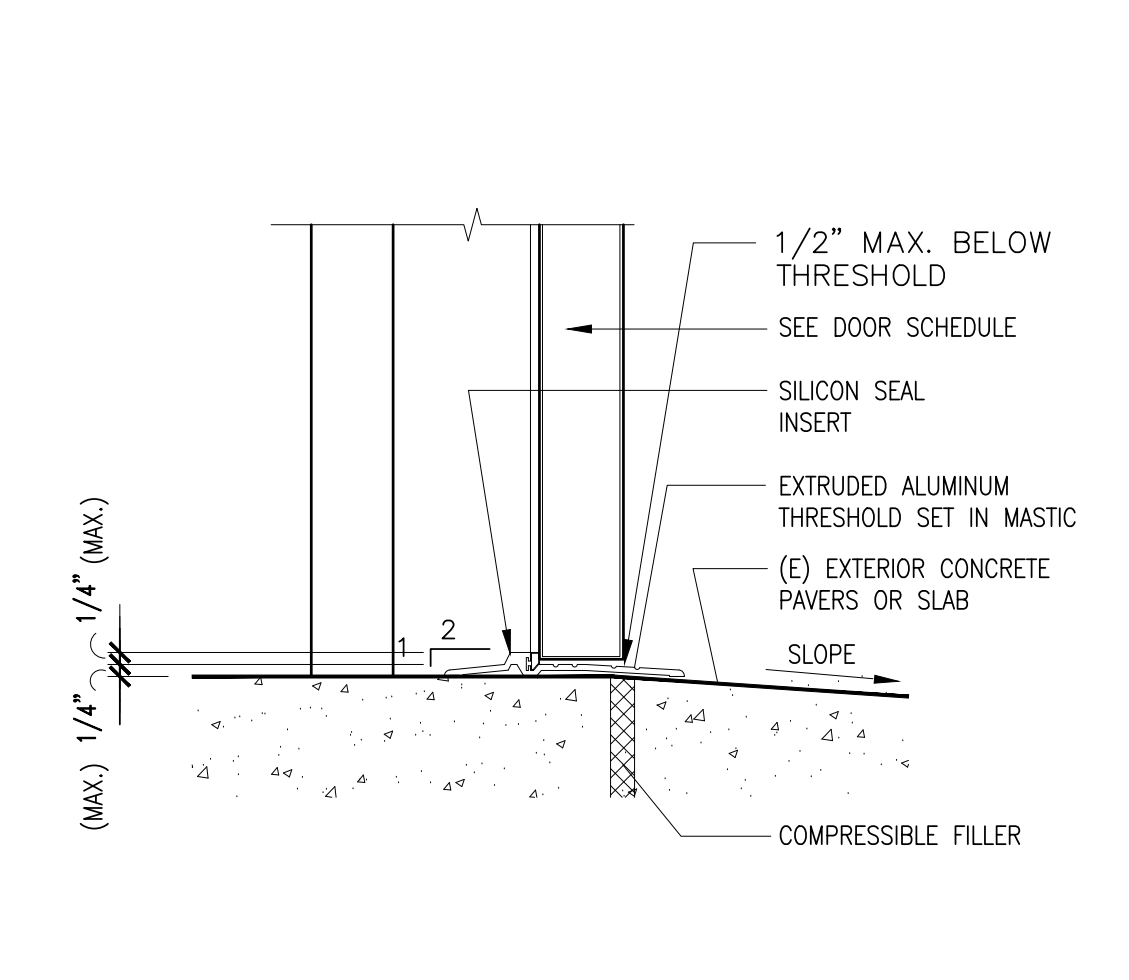
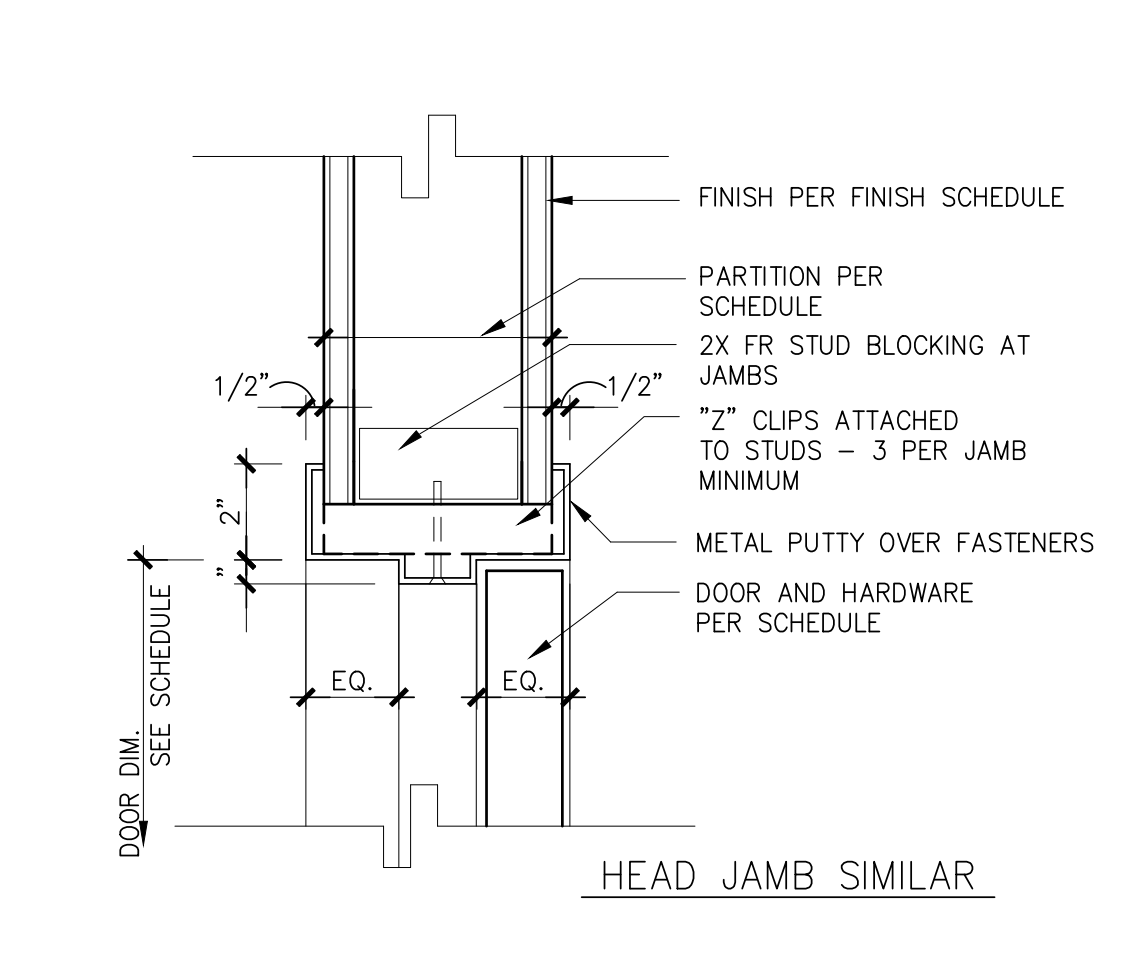
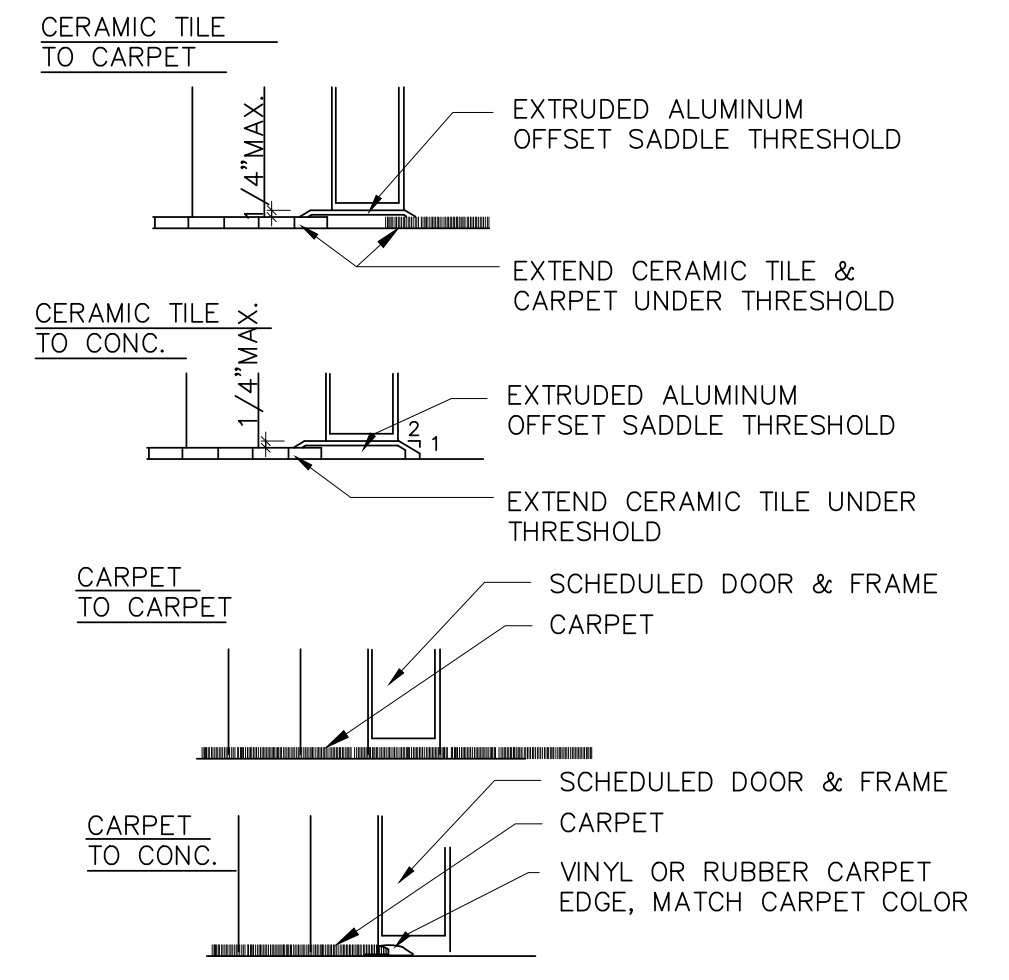
ALL FEDERAL, STATE, AND LOCAL  
 CODES, ORDINANCES, REGULATIONS  
 ETC. SHALL BE CONSIDERED AS PART  
 OF SPECIFICATIONS FOR THIS BUILDING  
 AND SHALL TAKE PRECEDENCE OVER  
 ANYTHING SHOWN, DESCRIBED, OR  
 IMPLIED WHERE SAME ARE AT VARIANCE

**STRIKES  
 ENTERTAINMENT  
 COMPLEX**

5613 Oleander Drive  
 WILMINGTON, NC  
 28403

DOOR SCHEDULE AND  
 DETAILS

Date \_\_\_\_\_ Scale As Noted  
 Draw \_\_\_\_\_ Job \_\_\_\_\_  
 Sheet \_\_\_\_\_

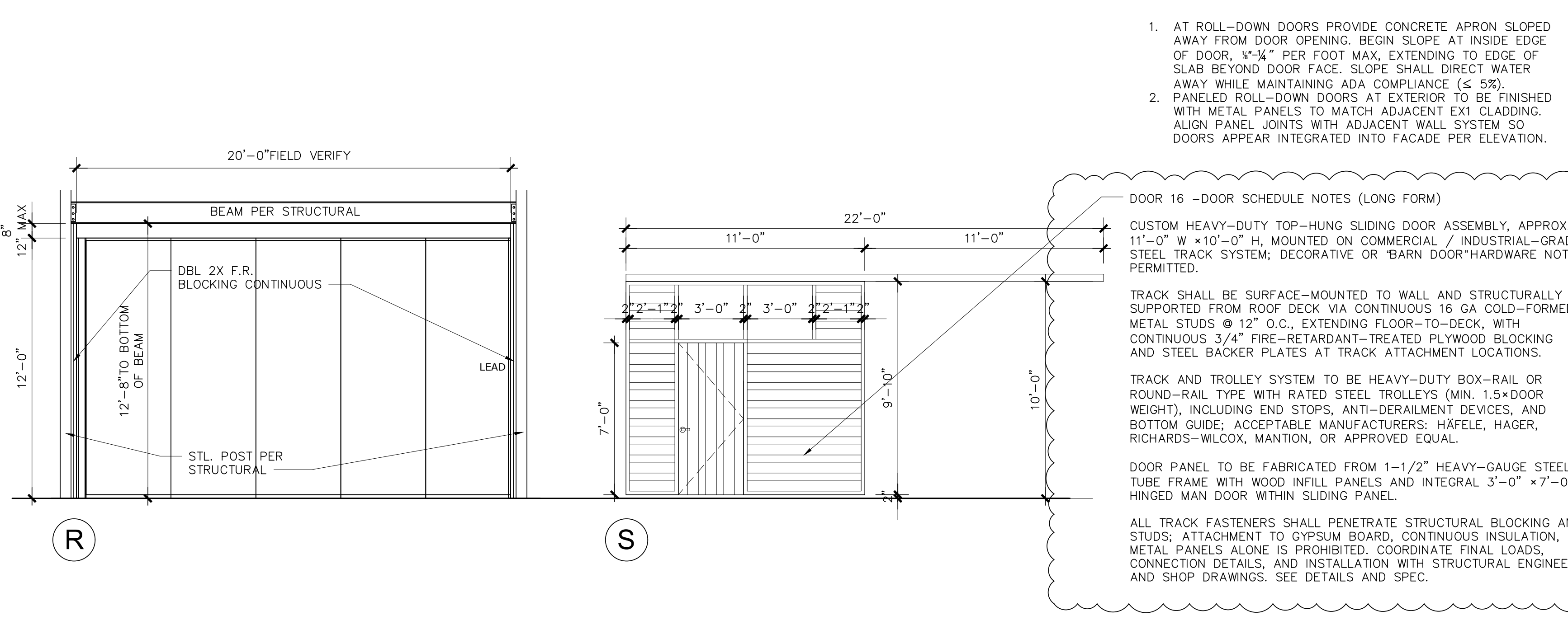
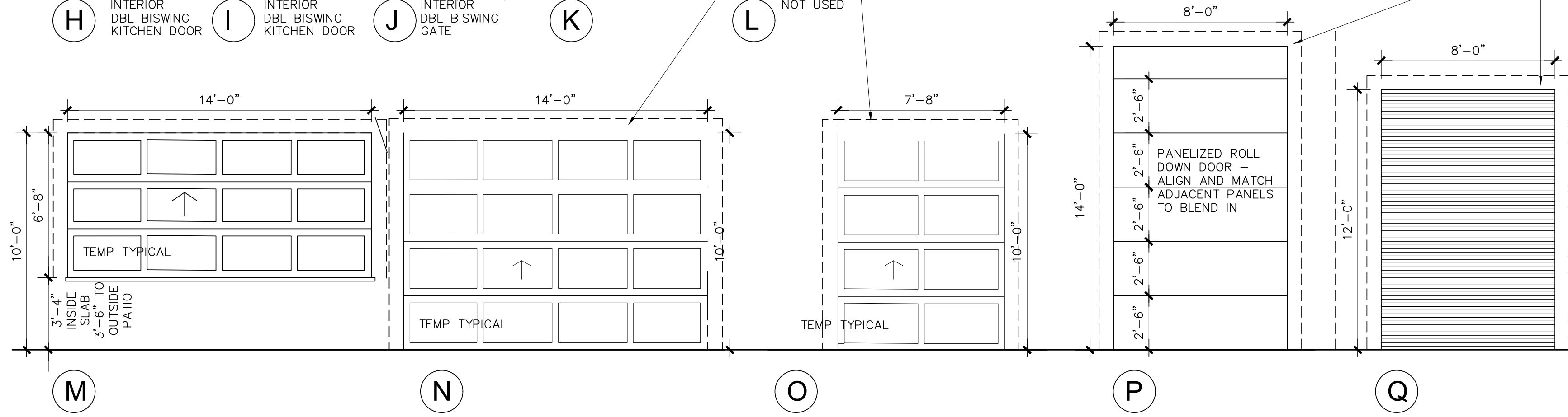
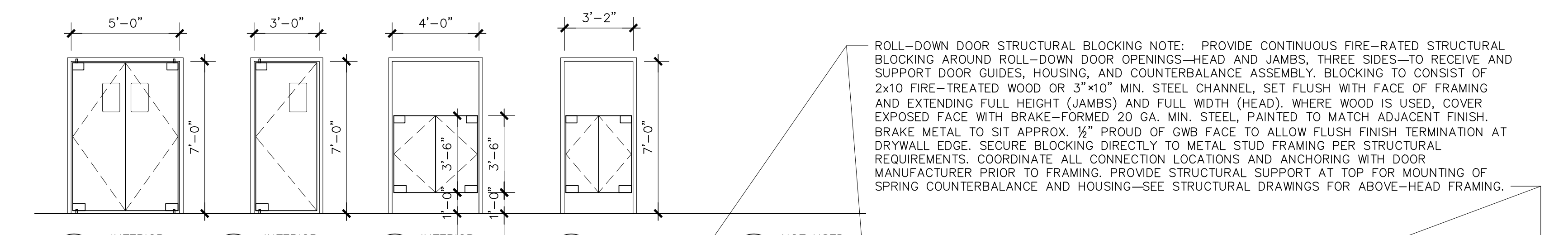
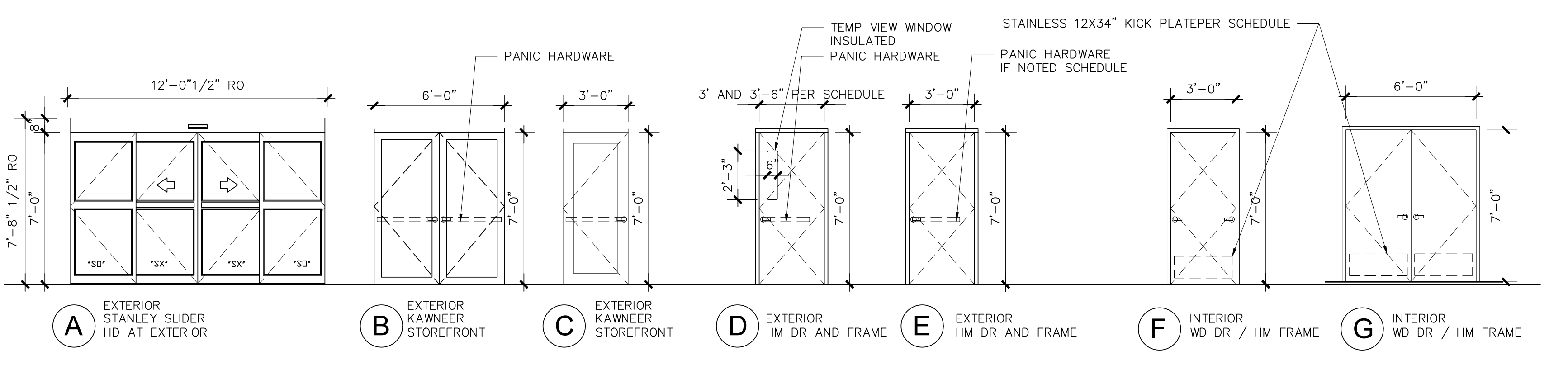


INTERIOR THRESHOLDS SCALE 1 1/2" = 1'-0" 5

H.M. FRAME IN STUD WALL SCALE 3" = 1'-0" 4

EXTERIOR SILL SCALE 1 1/2" = 1'-0" 3

HC SIGNS SCALE N.T.S. 2



DOOR SYMBOL	DOOR OPENING SIZE	TYPE	WIDTH	HEIGHT	THICK.	FRAME			DOORS MAT.	GLAZING TYPE	FIRE RATING	REMARKS	
						MAT.	DETAILS	JAMB					
1A	A STORE FRONT	12'-0"	7'-8"	PER MANUF	ALUM	PER MANUF	PER MANUF	ADA PER MANUF	ALUM	INSULATED TEMP	NONE	EXTERIOR - AUTO SLIDING DOOR (12' BI-PART, HEAVY DUTY) - STANLEY DURA-GUIDE 3000, BI-PARTING, 12'-0" PACKAGE, 6'-0" NOM. CLEAR OPENING, HEAVY-DUTY PACKAGE WITH REINFORCED HEADER AND WIND GUIDES. DESIGN FOR ASCE 7-16, 150 MPH VULT, RISK CAT II, EXPOSURE C, COMPONENTS & CLADDING DP6: ±45 PSF MIN. FINISH: CLEAR ANODIZED - TO MATCH STOREFRONT - GLASS: TEMPERED OR LAMINATED SAFETY - EMERGENCY BREAKOUT CLEAR WIDTH: 129.5" (BI-PART), IN ADDITION TO 6'-0" NOM. CLEAR. INSTALL PER ANSI/BHMA A156.10, 2018 NCBC, AND MANUFACTURER RECOMMENDATIONS.	
1B	A STORE FRONT	12'-0"	7'-8"	PER MANUF	ALUM	PER MANUF	PER MANUF	ADA PER MANUF	ALUM	INSULATED TEMP	NONE	INTERIOR NO WIND LOAD - AUTO SLIDING DOOR (12' BI-PART) - STANLEY DURA-GUIDE 3000, BI-PARTING, 12'-0" PACKAGE, 6'-0" NOM. CLEAR OPENING, NARROW STILES, SURFACE THRESHOLD, 120V OPERATOR, ACTIVATION/SAFETY SENSORS BOTH SIDES, 2-POINT LOCK, FINISH: CLEAR ANODIZED CLASS I, GLASS: CLEAR TEMPERED SAFETY. EMERGENCY BREAKOUT CLEAR WIDTH: 129.5" (BI-PART), IN ADDITION TO 6'-0" NOM. CLEAR. INSTALL PER ANSI/BHMA A156.10 AND 2018 NCBC AND MANUFACTURER RECOMMENDATIONS.	
2A	C STORE FRONT	3'-0"	7'-0"	PER MANUF	ALUM	PER MANUF	PER MANUF	ADA PER MANUF	ALUM	INSULATED TEMP	NONE	HARDWARE: KAWNEER TO MATCH ADJACENT STOREFRONT - 350 STILE, CLOSER, EXIT DEVICE (PANIC HARDWARE). GLAZING: 1" INSULATED CLEAR TEMPERED SAFETY GLASS TO MATCH ADJACENT STOREFRONT WINDOWS	
2B	C STORE FRONT	3'-0"	7'-0"	PER MANUF	ALUM	PER MANUF	PER MANUF	NONE INTERIOR	ALUM	INSULATED TEMP	NONE	HARDWARE: PANIC HARDWARE, CLOSER, LEVER, KEYPED PER OWNER'S MASTER KEY SYSTEM DOOR AND GLASS: KAWNEER 350 STILE - INSULATED FOR SOUND FROM ARCADE	
3	B STORE FRONT	DOUBLE 3'-0"	7'-0"	PER MANUF	ALUM	PER MANUF	PER MANUF	ADA PER MANUF	ALUM	INSULATED TEMP	NONE	HARDWARE: PANIC HARDWARE, CLOSER, LEVER, KEYPED PER OWNER'S MASTER KEY SYSTEM DOOR AND GLASS: KAWNEER 350 STILE - INSULATED FOR SOUND FROM ARCADE	
4	M GLAZED ROLL DOWN	14'-0"	6'-8"	PER MANUF	ALUM	PER MANUF	PER MANUF	COUNTER NONE	ALUM	INSULATED TEMP	NONE	MANUAL paneled roll-down door - clear anodized aluminum to match storefront system. panels to be glazed with insulated clear glass, wet-sealed with silicone sealant (no tape). door to be manually operated with interior locking hardware.	
5	N GLAZED ROLL DOWN	14'-0"	10'-0"	PER MANUF	ALUM	PER MANUF	PER MANUF	SLOPE PER NOTE 1	ALUM	INSULATED TEMP	NONE		
6	O GLAZED ROLL DOWN	10'-0"	10'-0"	PER MANUF	ALUM	PER MANUF	PER MANUF	SLOPE PER NOTE 1	ALUM	INSULATED TEMP	NONE		
7	NOT USED												
8	P PANEL ROLL DOWN	8'-0"	14'-0"	PER MANUF	GALVAN. STEEL	PER MANUF	PER MANUF	PER MANUF	SLOPE PER NOTE 1	ALUM	NONE	paneled roll-down doors at exterior to be finished with metal panels to match adjacent ext cladding and align panel joints with adjacent wall system so doors appear integrated into facade per elevation	
9	Q COIL INT ROLL DOWN	8'-0"	12'-0"	PER MANUF	GALVAN. STEEL	PER MANUF	PER MANUF	PER MANUF	SLOPE TO EXT 1/4"	ROLL DOWN	NONE	interior cooling service door - slats: flat, interlocking, 22 GAUGE MINIMUM, FACTORY PRIME-COATED STEEL, GUIDES, BRACKETS, AND HOOD: PRIME-COATED STEEL, FINISH (PUBLIC SIDE); FIELD PAINT TO MATCH ADJACENT INTERIOR WALL FINISH; FINISH (STOREROOM SIDE); FACTORY PRIMER, UNFINISHED ACCEPTABLE. OPERATION: MANUAL PULL WITH CHAIN HOIST; LOCKABLE INTERIOR SLIDE BOLT. INSTALL WITH CONTINUOUS SEALS AT JAMBS AND SILL TO LIMIT LIGHT/NOISE PENETRATION. COORDINATE HEAD CLEARANCES AND STRUCTURAL SUPPORTS WITH STRUCTURAL.	
10	R SOUND PARTITION	F.V. 20'-0"	12'-0"	PER MANUF		PER MANUF	PER MANUF	PER MANUF	NONE	CLAD	NONE	SOUND PARTITION - SEE DETAIL SHEET A9.8	
11A	D EXT METAL FLUSH	3'-6"	7'-0"	1 3/4"	HM			ADA PER MANUF	HM	6x27 INSULATED TEMP	NONE	HARDWARE: PANIC HARDWARE, STAINLESS LEVER TRIM EXTERIOR AND HINGES (NO THUMB TURN), HEAVY DUTY CLOSER, AND CYLINDER PREP FOR ELECTRIC MAG LOCK. FINISH: PAINT TO MATCH ADJACENT WALL FINISH. VIEW WINDOW FOR SAFETY.	
11B	D EXT METAL FLUSH	3'-0"	7'-0"	1 3/4"	HM			ADA PER MANUF	HM	6x27 INSULATED TEMP	NONE	HARDWARE: PANIC HARDWARE, STAINLESS LEVER TRIM EXTERIOR AND HINGES (NO THUMB TURN), HEAVY DUTY CLOSER, AND CYLINDER PREP FOR ELECTRIC MAG LOCK. FINISH: PAINT TO MATCH ADJACENT WALL FINISH. VIEW WINDOW FOR SAFETY.	
11C	E EXT METAL FLUSH	3'-0"	7'-0"	1 3/4"	HM			ADA PER MANUF	HM	NONE	20 MIN	HARDWARE: HEAVY DUTY SS LEVER LOCKSET AND HINGES (NO PANIC HARDWARE REQUIRED), CLOSER, PROVIDE APPROVED LISTED FIRE RATED GASKETS/SEALS AT FRAME AND THRESHOLD. PAINT TO MATCH ADJACENT WALL FINISH. PROVIDE SIGNAGE PER CODES - ELECTRICAL ROOM - NO STORAGE PERMITTED.	
11D	E EXT METAL FLUSH	3'-0"	7'-0"	1 3/4"	HM			ADA PER MANUF	HM	NONE	20 MIN	HARDWARE: HEAVY DUTY SS LEVER LOCKSET AND HINGES (NO PANIC HARDWARE REQUIRED), CLOSER, PROVIDE APPROVED LISTED FIRE RATED GASKETS/SEALS AT FRAME AND THRESHOLD. CLOSER, FINISH: PAINT TO MATCH ADJACENT WALL FINISH.	
11E	E EXT METAL FLUSH	3'-0"	7'-0"	1 3/4"	HM			ADA PER MANUF	HM	NONE	NONE	HARDWARE: STAINLESS STEEL LEVER, LEVER HARDWARE ON INTERIOR, HEAVY-DUTY HINGES, LOCKSET, AND CLOSER. KEY CYLINDER TO BE PROVIDED AND KEYPED AS REQUIRED BY FIRE DEPARTMENT. INSTALL SIGNAGE - SPRINKLER RISER ROOM IN 2'HIGH LETTERS ON EXTERIOR FACE PER NFPA/LOCAL FIRE REQUIREMENTS. PAINT DOOR AND FRAME.	
12A	F INTERIOR STORE ROOM	3'-0"	7'-0"	1 3/4"	HM			NONE	SC WD	NONE	NONE	HARDWARE: NOTE 1 - STOREROOM LOCK, KICKDOWN STOP, OUTSIDE KICK PLATE DOOR AND FINISH: NOTE 2	
12B	G INTERIOR STORE ROOM	DOUBLE 3'-0"	7'-0"	1 3/4"	HM			NONE	SC WD	NONE	NONE	HARDWARE: NOTE 1 - STOREROOM LOCK, 2 KICKDOWN STOPS, 2 OUTSIDE KICK PLATES, 2 WALL BUMPER DOOR AND FINISH: ROTARY BIRCH, PRE FINISHED CLEAR	
12C	F INTERIOR FAMILY ROOM	3'-0"	7'-0"	1 3/4"	HM			NONE	SC WD	NONE	NONE	HARDWARE: NOTE 1 - PRIVACY LOCK, CLOSER, WALL BUMPER DOOR AND FINISH: ROTARY BIRCH, PRE FINISHED CLEAR	
12D	F INTERIOR REST ROOM	3'-0"	7'-0"	1 3/4"	HM			NONE	SC WD	NONE	NONE	HARDWARE: NOTE 1 - PASSAGE LOCK, CLOSER, WALL BUMPER DOOR AND FINISH: ROTARY BIRCH, PRE FINISHED CLEAR	
12E	F INTERIOR REST ROOM	3'-0"	7'-0"	1 3/4"	HM			NONE	SC WD	NONE	NONE	HARDWARE: NOTE 1 - PASSAGE LOCK, CLOSER, WALL BUMPER DOOR AND FINISH: NOTE 2	
13	H TRAFFIC DOOR	5'-0"	7'-0"	PER MANUF	PER MANUF			PER MANUF	NONE	ALUM	NONE	ELIASON OR EQUAL BI SWING DOOR WITH LOCK DOWNS - WITH STAINLESS KICK AND PUSH PLATES Double Aluminum Swinging Traffic Door with 9" x 14" Window - 60" x 84" Door Opening	
14	I TRAFFIC DOOR	3'-0"	7'-0"	PER MANUF	PER MANUF			PER MANUF	NONE	ALUM	NONE	ELIASON OR EQUAL BI SWING DOOR WITH LOCK DOWNS - WITH STAINLESS KICK AND PUSH PLATES Aluminum Swinging Traffic Door with 9" x 14" Window - 36" x 84" Door Opening	
16	S SLIDING WALL	11'-0"	10'-0"										
19	J TRAFFIC GATE	4'-0"	3'-6"	PER MANUF	PER MANUF			PER MANUF	NONE	ALUM	NONE	ELIASON OR EQUAL LWP Gate Aluminum Door	
20	K TRAFFIC GATE	3'-2"	3'-6"	PER MANUF	PER MANUF			PER MANUF	NONE	ALUM	NONE	ELIASON OR EQUAL LWP Gate Aluminum Door	

DOOR 16 - DOOR SCHEDULE NOTES (LONG FORM)

CUSTOM HEAVY-DUTY TOP-HUNG SLIDING DOOR ASSEMBLY, APPROX. 11'-0" W x 10'-0" H, MOUNTED ON COMMERCIAL / INDUSTRIAL-GRADE STEEL TRACK SYSTEM; DECORATIVE OR "BARN DOOR" HARDWARE NOT PERMITTED.

TRACK SHALL BE SURFACE-MOUNTED TO WALL AND STRUCTURALLY SUPPORTED FROM ROOF DECK VIA CONTINUOUS 16 GA COLD-FORMED METAL STUDS @ 12" O.C., EXTENDING FROM TO-DECK, WITH CONTINUOUS 3/4" FIRE-RETARDANT-TREATED PLYWOOD BLOCKING AND STEEL BACKER PLATES AT TRACK ATTACHMENT LOCATIONS.

TRACK AND TROLLEY SYSTEM TO BE HEAVY-DUTY BOX-RAIL OR ROUND-RAIL TYPE WITH RATED STEEL TROLLEYS (MIN. 1.5x DOOR WEIGHT), INCLUDING END STOPS, ANTI-DERAILMENT DEVICES, AND BOTTOM GUIDE, ACCEPTABLE MANUFACTURERS: HAFELE, HAGER, RICHARDS-WILCOX, MANTION, OR APPROVED EQUAL.

DOOR PANEL TO BE FABRICATED FROM 1-1/2" HEAVY-GAUGE STEEL TUBE FRAME WITH WOOD INFILL PANELS AND INTEGRAL 3'-0" x 7'-0" HINGED MAIN DOOR WITHIN SLIDING PANEL.

ALL TRACK FASTENERS SHALL PENETRATE STRUCTURAL BLOCKING AND STUDS; ATTACHMENT TO GYPSUM BOARD, CONTINUOUS INSULATION, OR METAL PANELS ALONE IS PROHIBITED. COORDINATE FINAL LOADS, CONNECTION DETAILS, AND INSTALLATION WITH STRUCTURAL ENGINEER AND SHOP DRAWINGS. SEE DETAILS AND SPEC.

1. SCHLAGE INTERIOR DOOR HARDWARE - ENTERTAINMENT COMPLEX - PROVIDE SCHLAGE COMMERCIAL GRADE LEVER HARDWARE, STAINLESS STEEL FINISH (626 OR EQUIVALENT), HARDWARE TO INCLUDE LEVER TRIM, HEAVY DUTY SPRING RETURN, AND STAINLESS STEEL HINGES. ALL LOCKS TO BE KEYPED PER OWNER'S MASTER KEY SYSTEM. PROVIDE PRIVACY/CLASSROOM/OFFICE/STOREROOM FUNCTIONS AS REQUIRED PER DOOR SCHEDULE. ALL INTERIOR DOORS IN PUBLIC AREAS TO RECEIVE ADA COMPLIANT LEVER SETS. EXIT DEVICES AND PANIC HARDWARE WHERE SHOWN. COORDINATE CLOSERS, STRIKES, AND DOOR PREPS WITH DOOR FRAME MANUFACTURER. PROVIDE KICKDOWN STOPS AT STORAGE / SERVICE DOORS. PROVIDE WALL-MOUNTED DOOR BUMPER AT ALL OTHER INTERIOR LOCATIONS WITH FIRE-RATED BLOCKING BEHIND GYP WALLS. PROVIDE 12" x 34" STAINLESS STEEL KICKPLATES AT STOREROOM DOORS.

DOOR TYPES AND SCHEDULE SCALE 1/4" = 1'-0" 1

- **Appendix – Bidder Questions and Responses by Division**

*(Responses are issued by CSI Division and form part of this Addendum)*

## **DIVISION 01 – GENERAL REQUIREMENTS**

### **CLARIFICATION**

A form was received from an out-of-state material provider requesting pre-approval as an alternate or equal. The Architect is not familiar with this provider and cannot independently evaluate or research all vendor-submitted products.

The Architect does not pre-approve alternates or equals submitted directly by material providers. Substitutions are intended to be submitted through the General Contractor, in coordination with their subcontractors, who are best positioned to evaluate alternate materials based on experience, constructability, installation, availability, and warranty considerations. The Architect will review substitutions upon formal submission by the GC.

This approach is preferred to avoid confusion and to ensure the General Contractor is not required to install or warranty an unfamiliar or inferior product.

## **Division 06 – Wood, Plastics, and Composites**

### **Sheet A2.2 – Second Floor / Mezzanine Plan**

The following items have been **eliminated**:

- Fire-rated duckpin bowling platform
- Associated fire-rated floor assembly
- Metal wall previously supporting televisions at seating area
- Electrical and low-voltage wiring serving televisions behind seating

#### **Reason:**

The Owner will provide a **fully ADA-compliant duckpin bowling system**, eliminating the need for the previously designed fire-rated platform and related obstructions.

Sheet A2.2 has been revised accordingly.

## **DIVISION 08 – OPENINGS**

### **Sheet A2.1 – First Floor Plan**

Kitchen swing doors at the **Break Area** and **Dry Storage** have been **correctly identified as Door 14**, replacing Door 13.

This revision aligns door numbering with the updated **Door Schedule on Sheet A9.3**.

#### **Sheet A4.1 – Kitchen Equipment Plan**

Traffic doors shown on the kitchen equipment plan have been **numbered to match the Architectural Door Schedule**.- Quantities modified for 64A TO 4

This coordination is provided to eliminate ambiguity where:

- Kitchen equipment vendors provide traffic doors, **or**
- Doors are supplied separately by the GC or door supplier

Door numbering is now consistent between **Sheets A4.1 and A9.3**.

#### **Sheet A9.3 – Door Schedule and Door Types**

The following doors have been **added to the Door Schedule** and coordinated with Door Types shown on Sheet A9.3:

- **Door 13** – Door Type **H**
- **Door 14** – Door Type **I**
- **Door 16** – Door Type **S**
- **Door 19** – Door Type **J**
- **Door 20** – Door Type **K**

These doors are primarily **kitchen-related doors** and were previously shown on the kitchen equipment plans. Door numbers have now been fully coordinated between the architectural door schedule and kitchen equipment drawings.

#### **Division 23 – Heating, Ventilating, and Air Conditioning (HVAC)**

##### **Question 1**

RTU-1, 4, 8, and 9 are scheduled as foundation models, whereas RTU-2, 3, 5, 6, and 7 are scheduled as high efficiency Precedent models. Is there a reason why you chose different product lines and efficiencies for each?

##### **Response (Topsail Engineering):**

*This project has been in the works for a while. When we started pulling the information, ComfortSite was still catching up to the new refrigerant and seemed to be indicating that two product lines were necessary for the two size ranges. The larger units did not have the higher efficiency available.*

---

##### **Question 2**

RTU-1, 8, and 9 are scheduled with 37.5% outside air, which is very high for standard unitary equipment.

**Response (Topsail Engineering):**

*See below.*

---

**Question 3**

All RTUs are showing a requirement for CO<sub>2</sub>-based demand-controlled ventilation. Is this your intent? If so, is this perhaps the reason why RTU-1, 8, and 9 are scheduled with such a high percentage of outside air?

**Response (Topsail Engineering):**

*Yes to both. Code requirement and net hood exhaust when initially sizing drove a number that was not thought would ever occur, but had to be shown.*

---

**Question 4**

Does the note about RTU-6 being a CaptiveAire unit mean there is not a standard Trane unit for RTU-6? There was a last-minute change to using a CaptiveAire 100% makeup air unit in the kitchen in lieu of the RTU-6 I had designed. This will also affect the previous two answers but was not time to adjust for pricing.

**Response (Topsail Engineering):**

*There was a last-minute change to using a CaptiveAire 100% makeup air unit serving the kitchen in lieu of the previously designed RTU-6. This change will also affect the previous two answers, but there was not time to adjust for pricing.*

**Architect's Response:**

*This change was made at the Owner's request during the bid document review meeting with the Owner, Architect, Captive Air and Topsail Engineering, prior to issuance for bid. The Owner directed that the kitchen makeup air be provided as **100% outside air**. To meet this requirement, RTU-6 was revised to a **CaptiveAire outside air unit**, which was configured and designed by CaptiveAire on the day of the meeting.*

*Alternative Train equipment may be considered during post-bid coordination.*

**Question 5**

Given the application, have you given any consideration to using hot gas reheat for humidity control on these RTUs? If not too difficult, base price plus add would be nice.

**Response (Topsail Engineering):**

*If not too difficult, base price plus add would be nice. It was felt that the higher efficiency on the smaller units would be sufficient and not available in GDK, but would definitely be a consideration.*

**Captive Air Question 6 – Conditioned Make-Up Air Unit Responsibility GC or Mechanical Contractor**



Clarification is provided regarding responsibility for the CaptiveAire conditioned make-up air unit:

- The **General Contractor** is responsible for the complete scope.
- The GC may determine whether the unit is purchased:
  - Directly by the GC, or
  - By the GC's mechanical contractor

This allocation may vary by contractor. The Architect and Owner have **no preference**, provided the system is fully coordinated and code-compliant.

Sincerely,  
Rees Architects PC

A handwritten signature in black ink, appearing to read "John D. Rees". The signature is fluid and cursive, with a long horizontal stroke extending to the right.

John D. Rees, Architect