



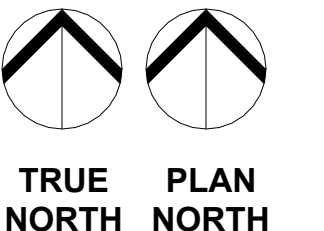
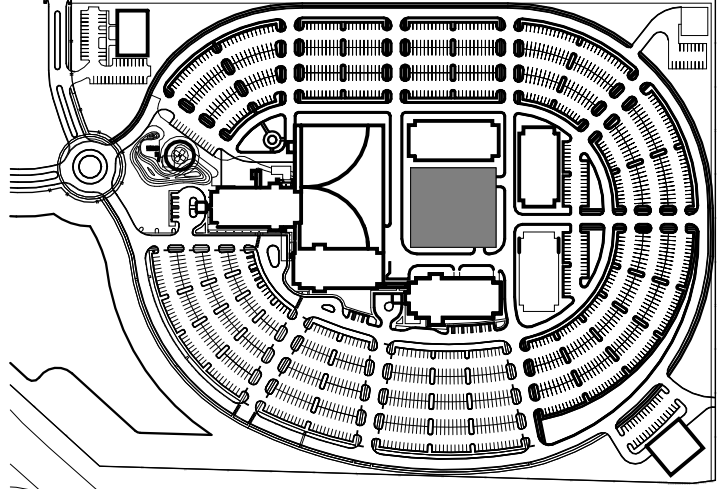
REVISIONS

NO	DATE	DESCRIPTION
A	08.29.2025	ISSUED FOR PRICING AND PERMITTING

**CAROLINA FOREST
PARKING DECK**

MYRTLE BEACH, SOUTH CAROLINA

KEYPLAN



PROJECT NO: 0470.62
DATE: 00.00.2025
COPYRIGHT © 2025 DesignStrategies, LLC

**FIRE PROTECTION LEGEND, NOTES, SCHEDULES, AND INDEX
FP001**

FIRE PROTECTION LEGEND

NOT ALL SYMBOLS MAY BE USED

SYMBOL	ABB.	DESCRIPTION	SYMBOL	ABB.	DESCRIPTION
—A/S—	A/S	AUTOMATIC SPRINKLER SYSTEM	×	X	ANCHOR
—DPSS—	DPSS	DRY PIPE SPRINKLER SYSTEM	⊕	⊕	BUTTERFLY VALVE
—FDR—	FDR	FIRE DRAIN RISER	⊖	⊖	CAP/PLUG
—F—	F	FIRE MAIN	●	●	CEILING SPRINKLER - CONCEALED
—MDSF—	MDSF	MANUAL DRY STANDPIPE SYSTEM	⊙	⊙	CEILING SPRINKLER - RECESSED PENDANT
—PASS—	PASS	PRE-ACTION SPRINKLER SYSTEM	○	○	CEILING SPRINKLER - UPRIGHT
—SFFF—	SFFF	SYNTHETIC FLUORINE FREE FOAM SYSTEM	⊖	⊖	CHECK VALVE
			⊕	⊕	FIRE DEPARTMENT CONNECTION
			⊕	⊕	FIRE EXTINGUISHER CABINET
			⊕	⊕	FIRE RISER ID SIZE SYSTEM-RISER ID (UP/DN)
			⊕	⊕	GATE VALVE
			⊕	⊕	PIPE GUIDE
			⊕	⊕	PIPE TURN DOWN
			⊕	⊕	PIPE TURN UP
			⊕	⊕	PRESSURE GAUGE
			⊕	⊕	PRV
			⊕	⊕	PRESSURE REGULATING VALVE
			⊕	⊕	REDUCER
			⊕	⊕	SIDEWALL EXTENDED COVERAGE SPRINKLER
			⊕	⊕	SIDEWALL SPRINKLER
			⊕	⊕	SOLENOID VALVE
			⊕	⊕	WALL HUNG FIRE EXTINGUISHER
			⊕	⊕	AFF
			⊕	⊕	DCVA
			⊕	⊕	DDCVA
			⊕	⊕	EMAC
			⊕	⊕	FARS
			⊕	⊕	I.E.
			⊕	⊕	INVERT ELEVATION

PIPING MATERIALS SCHEDULE

GENERAL NOTES:
1. SEE SPECIFICATIONS FOR ADDITIONAL REQUIREMENTS AND ACCESSORIES.

PLUMBING SYSTEM	PLUMBING MATERIAL DESCRIPTION
FIRE PROTECTION PIPING	SCHEDULE 40 BLACK STEEL PIPE, WITH CAST IRON FITTINGS (PIPE SIZES 2" AND SMALLER)
FIRE PROTECTION PIPING	SCHEDULE 40 BLACK STEEL PIPE, WITH CUT GROOVE FITTINGS (PIPE SIZES 2 1/2" AND LARGER)
FIRE PROTECTION PIPING	SCHEDULE 10 BLACK STEEL PIPE, WITH ROLL GROOVE FITTINGS (PIPE SIZES 4" AND LARGER)

FIRE PROTECTION GENERAL NOTES

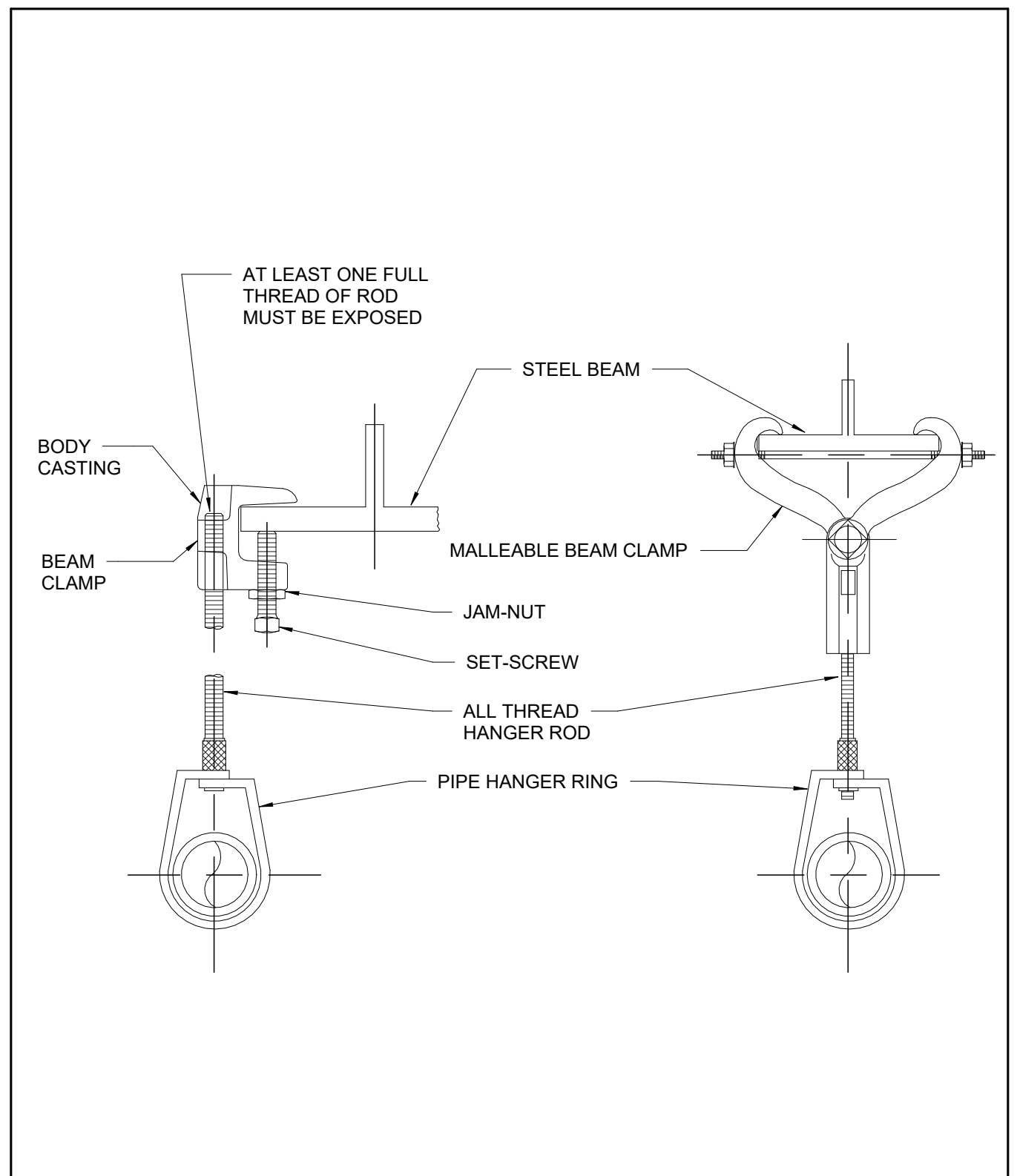
- A. ALL WORK ON DESIGNATED STANDPIPE SYSTEMS SHALL PERFORMED BY A STATE LICENSED FIRE PROTECTION CONTRACTOR.
- B. THE CONTRACTOR SHALL PROVIDE A MANUAL STANDPIPE SYSTEM(S) AS SPECIFIED AND AS INDICATED FOR THE ENTIRE FACILITY, UNLESS NOTED OTHERWISE IN SPECIFIC AREAS. PROVIDE FIRE PROTECTION SYSTEMS AS INDICATED ON THE FIRE PROTECTION DRAWINGS. COMPLETE FIRE PROTECTION SHOP DRAWINGS, INCLUDING HYDRAULIC CALCULATIONS, SEISMIC CALCULATIONS, AND EQUIPMENT CUT SHEETS SHALL BE SUBMITTED TO THE ENGINEER OF RECORD, THE LOCAL FIRE MARSHAL, AND ANY OTHER AUTHORITIES HAVING JURISDICTION FOR REVIEW AND APPROVAL. NO WORK SHALL BEGIN PRIOR TO OBTAINING APPROVAL FROM ALL AUTHORITIES HAVING JURISDICTION.
- C. CONTRACTOR IS RESPONSIBLE FOR OBTAINING ALL REQUIRED PERMITS PRIOR TO INSTALLATION.
- D. THE FIRE PROTECTION SYSTEM, EQUIPMENT AND COMPONENTS SHALL BE DESIGNED, HYDRAULICALLY CALCULATED, AND INSTALLED IN FULL ACCORDANCE WITH APPLICABLE SECTIONS OF NFPA 10, 13, 14, 24 AND 101. FINAL SYSTEM DESIGN AND INSTALLATION SHALL ALSO COMPLY WITH ALL LOCAL, COUNTY AND STATE BUILDING CODES ALONG WITH THE REQUIREMENTS OF ANY INSURANCE UNDERWRITERS. WHENEVER A CONFLICT IN CRITERIA OCCURS, THE MORE STRINGENT REQUIREMENT TAKES PRECEDENCE.
- E. DRAWINGS ARE SCHEMATIC ONLY. INDICATE DESIGN INTENT AND SHALL NOT BE SCALED. ACTUAL LOCATION OF PIPE, STANDPIPES, AND EQUIPMENT SHOWN ON DRAWINGS SHALL BE FIELD VERIFIED BY THE CONTRACTOR. COORDINATE FIRE PIPE ROUTING WITH ALL TRADES TO MAXIMIZE AVAILABLE CLEARANCES AND AVOID FIELD INSTALLATION CONFLICTS. ALL EXPOSED PIPING SHALL BE ROUTED AS CLOSE AS POSSIBLE TO THE BUILDING STRUCTURAL MEMBERS, UNLESS NOTED OTHERWISE.
- F. MAINTAIN ACCESSIBILITY OF VALVES, INSPECTOR'S TEST STATIONS, FIRE DEPARTMENT CONNECTIONS AND RELATED ITEMS. PROVIDE LABELED ACCESS DOORS WHERE NECESSARY AND AS APPROVED BY THE ARCHITECT.
- G. ALL CONTROL, DRAIN, AND TEST CONNECTION VALVES SHALL BE PROVIDED WITH PERMANENTLY MARKED WEATHERPROOF METAL OR RIGID PLASTIC IDENTIFICATION SIGNS INDICATING THE FUNCTION AND THE PORTION OF THE BUILDING/FACILITY SERVED.
- H. INSTALL ALL PIPING, FITTINGS AND JOINTS TO FOLLOW THE GEOMETRY OF THE STRUCTURE. LOCATE EXPOSED PIPING IN PUBLIC AREAS OUT OF DIRECT VIEW WHERE PRACTICAL. EXPOSED PIPING SHALL BE INSTALLED PARALLEL TO ADJACENT BUILDING COMPONENTS.
- I. COORDINATE INSTALLATION OF PIPING AND EQUIPMENT WITH ELECTRICAL EQUIPMENT TO MAINTAIN WORKING CLEARANCES IN ACCORDANCE WITH THE NATIONAL ELECTRICAL CODE.
- J. INSTALL PIPING TO MAINTAIN SPECIFIED CLEARANCES ABOVE CEILINGS.
- K. PROVIDE UL APPROVED PENETRATION ASSEMBLIES FOR ALL FIRE PROTECTION PIPING PASSING THROUGH RATED ASSEMBLIES.
- L. PROVIDE A GENERAL INFORMATION SIGN FOR EACH SYSTEM AT THE RISER OR SYSTEM CONNECTION. THE SIGN SHALL INCLUDE THE FOLLOWING INFORMATION: NAME AND LOCATION OF THE FACILITY, PRESENCE OF HIGH-PILED AND/OR RACK STORAGE, FLOW TEST INFORMATION, AREA SERVED, PRESENCE OF FLAMMABLE/COMBUSTIBLE LIQUIDS, PRESENCE OF HAZARDOUS MATERIALS, PRESENCE OF OTHER SPECIAL STORAGE, LOCATION OF AUXILIARY AND LOW POINT DRAINS, NAME OF INSTALLING CONTRACTOR, AND LOCATION OF ANTI-FREEZE OR ANY OTHER AUXILIARY FIRE PROTECTION SYSTEMS.
- M. THE CONTRACTOR SHALL CONTACT AUTHORITIES HAVING JURISDICTION, ANY INSURANCE UNDERWRITERS, ARCHITECT/ENGINEER AND THE OWNER'S REPRESENTATIVE TO WITNESS THE FINAL ACCEPTANCE TESTING OF ALL SYSTEMS.
- N. SEE PLUMBING GENERAL NOTES FOR ADDITIONAL REQUIREMENTS.

FIRE FLOW TEST SCHEDULE

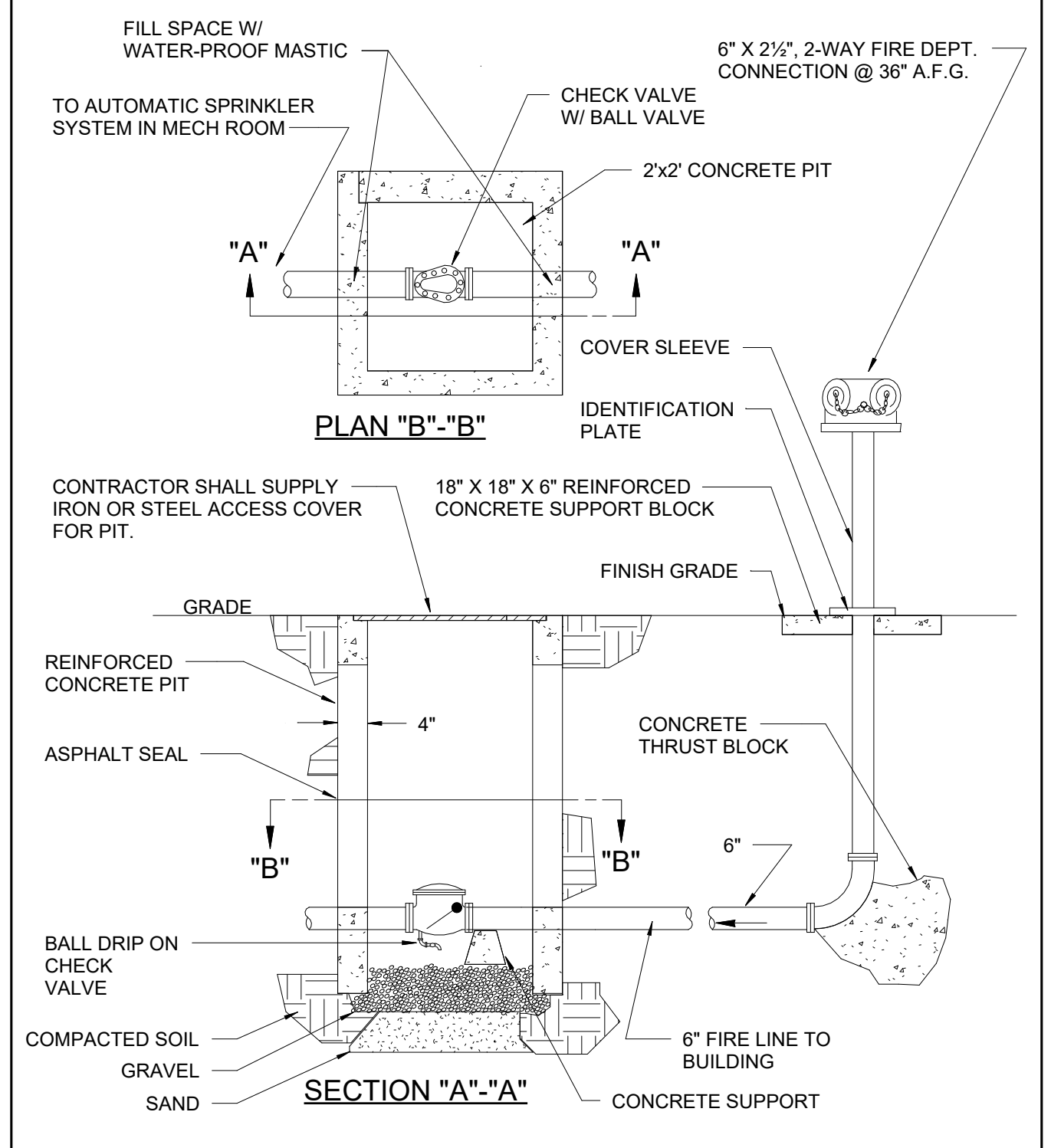
TEST PREFORMED BY	DATE OF TEST	STATIC PRESSURE PSI	RESIDUAL PRESSURE PSI	FLOW GPM	SOURCE
GRAND STRAND WATER & SEWER	06-03-2025	58 PSI	52	1280	HYDRANT 8131 & HYDRANT 8095

FIRE COMPONENT SCHEDULE

DESIGNATION	DESCRIPTION	Manufacturer	Model	Comments
FP-9	FIRE DEPARTMENT VALVE	ELKHART BRASS	U-30	PROVIDE WITH CAP AND CHAIN
FP-11	FREE STANDING SIAMSESE FIRE DEPARTMENT CONNECTION (FREEZEPROOF)	CROCKER	6512-PB	



U.L./F.M. APPROVED BEAM CLAMP PIPE HANGER 1



FIRE DEPARTMENT CONNECTION VALVE PIT 2

SHEET INDEX

NUMBER	SHEET NAME
FP001	FIRE PROTECTION LEGEND, NOTES, SCHEDULES, AND INDEX
FP111	FIRE PROTECTION PLAN - LEVEL 01
FP121	FIRE PROTECTION PLAN - LEVEL 02
FP131	FIRE PROTECTION PLAN - LEVEL 03
FP141	FIRE PROTECTION PLAN - LEVEL 04
FP601	FIRE PROTECTION RISER DIAGRAM

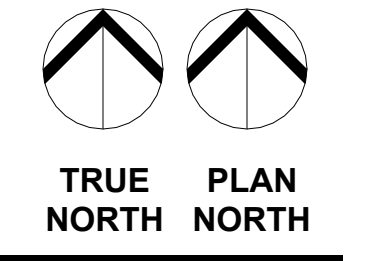
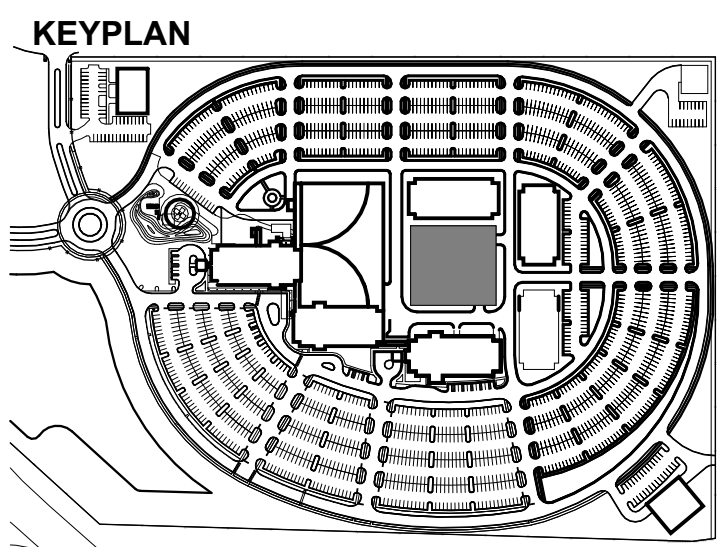


REVISIONS

NO	DATE	DESCRIPTION
A	08.29.2025	ISSUED FOR PRICING AND PERMITTING



**CAROLINA FOREST
PARKING DECK**
MYRTLE BEACH, SOUTH CAROLINA

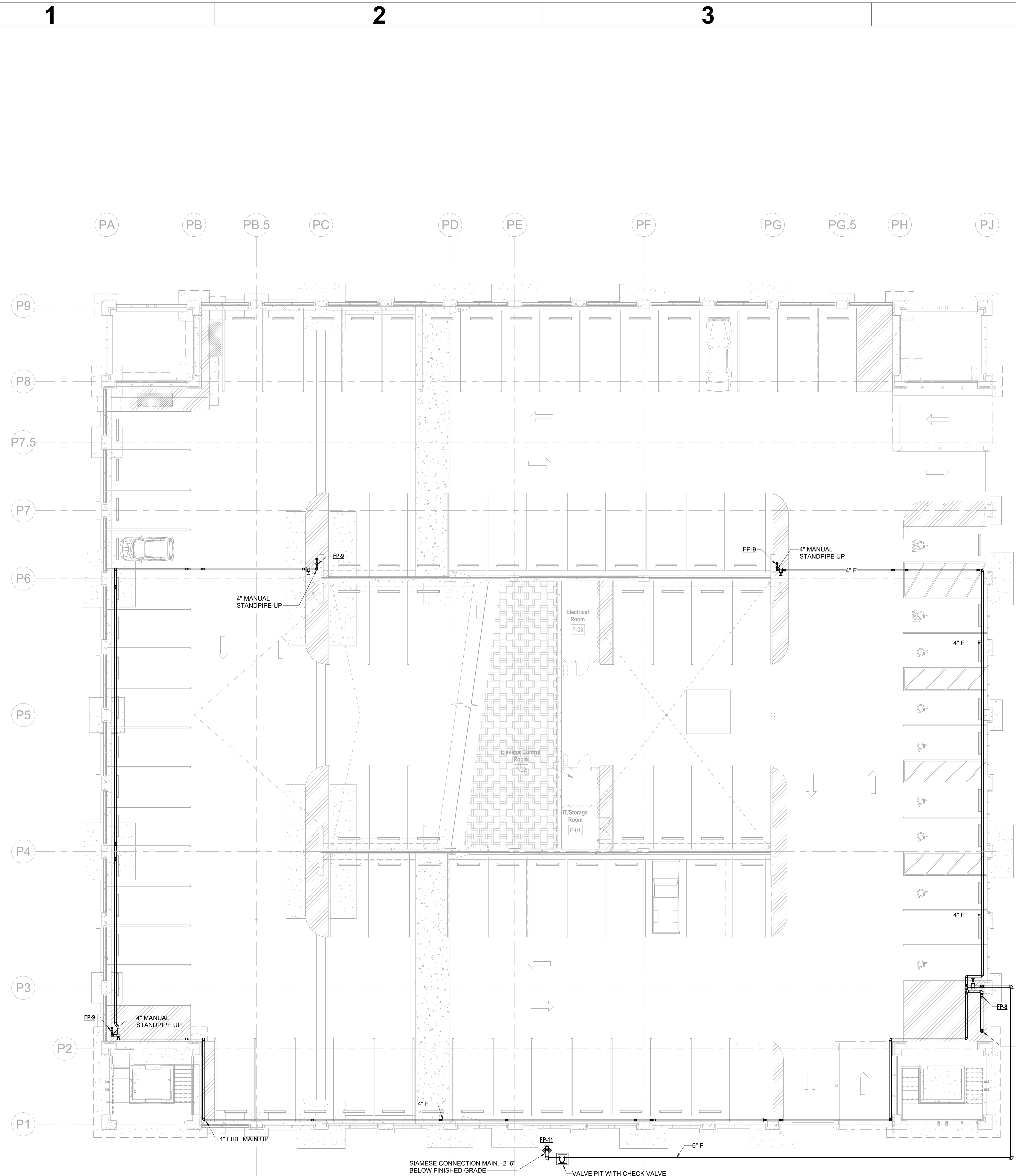


PROJECT NO: 0470.62
DATE: 00.00.2025
COPYRIGHT © 2025 DesignStrategies, LLC

**FIRE
PROTECTION
PLAN – LEVEL
01**

FP111

RENOVATION LEGEND	
SYMBOL	DESCRIPTION
	EXISTING TO REMAIN
	NEW CONSTRUCTION
	CONNECT TO EXISTING AT THIS POINT



SIAMESE CONNECTION MAIN, -2'-6\"/>

VALVE PIT WITH CHECK VALVE
(SEE FP DETAIL 2 ON SHEET FP001)

3/32" = 1'-0"

1 FIRE PROTECTION PLAN - LEVEL 01

Printed on: 01/20/25 9:03:33 PM
 Model File: lssr.com\TeamRoot\Team72\2025\25720090 - McLeod Health - Carolina Forest Deck\Construct\Play\SSR_PL_BG_Carolina Forest Parking Deck_B25.rvt

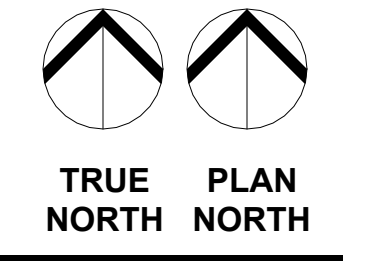
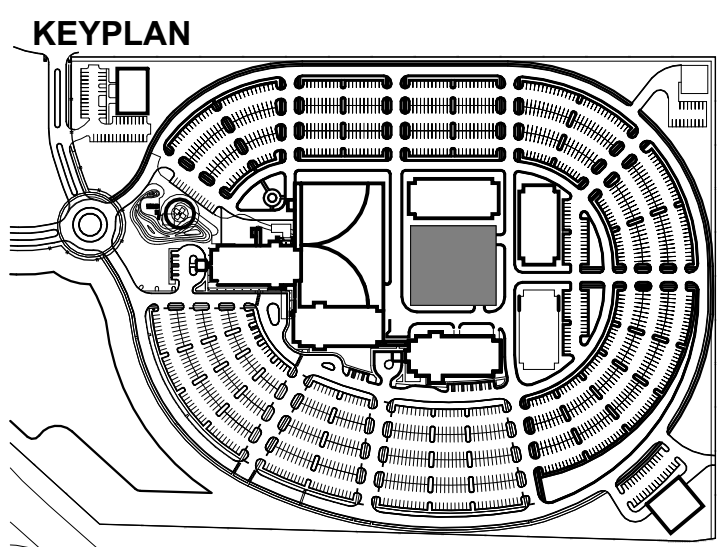


REVISIONS

NO	DATE	DESCRIPTION
A	08.29.2025	ISSUED FOR PRICING AND PERMITTING



**CAROLINA FOREST
PARKING DECK**
MYRTLE BEACH, SOUTH CAROLINA

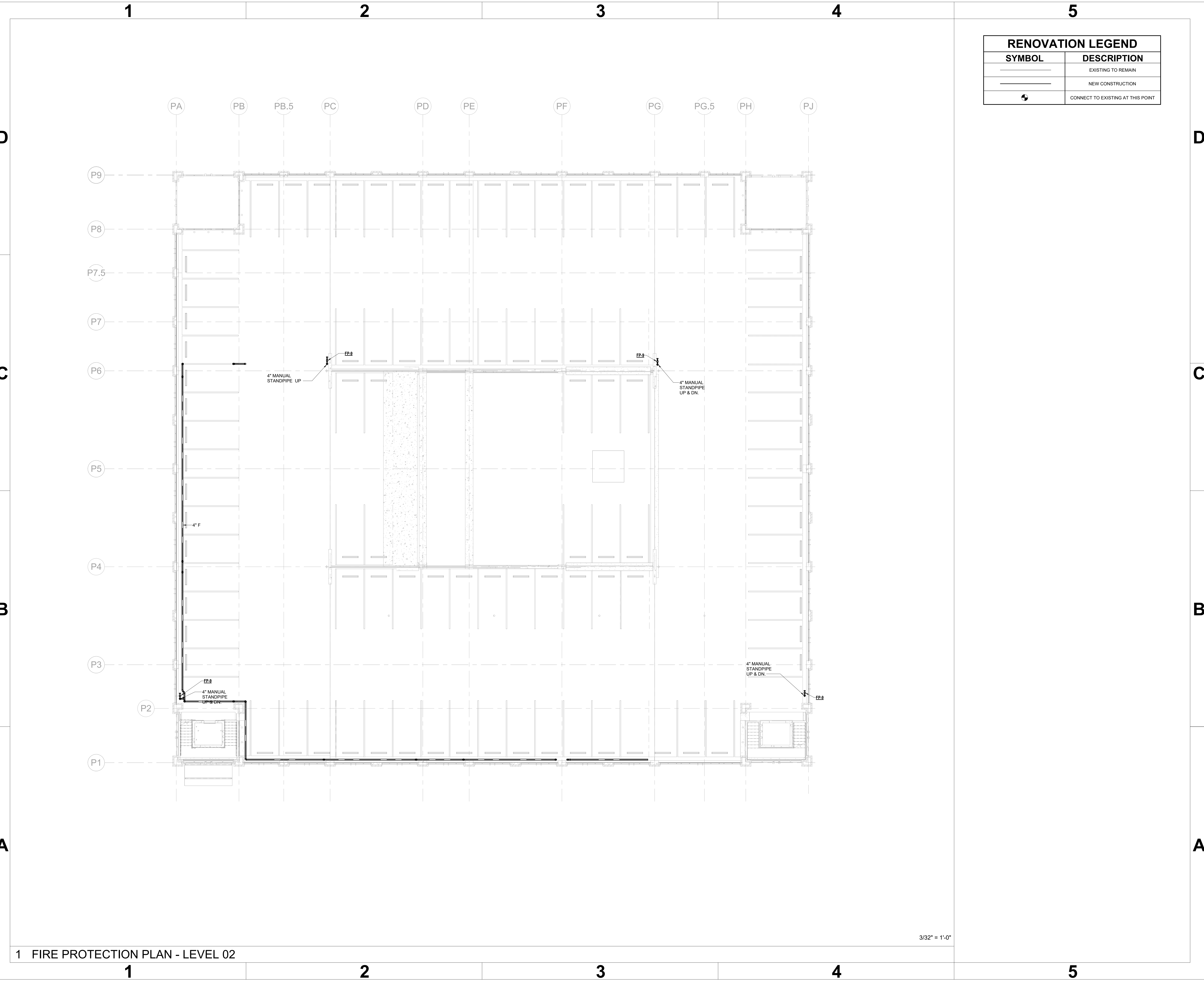


PROJECT NO: 0470.62
DATE: 00.00.2025
COPYRIGHT © 2025 DesignStrategies, LLC

**FIRE
PROTECTION
PLAN – LEVEL
02**

FP121

RENOVATION LEGEND	
SYMBOL	DESCRIPTION
	EXISTING TO REMAIN
	NEW CONSTRUCTION
	CONNECT TO EXISTING AT THIS POINT



3/32" = 1'-0"

1 FIRE PROTECTION PLAN - LEVEL 02

Printed on: 01/20/25 9:05:38 AM
 Model File: I:\ssr.com\TeamRoot\Team72\2025\25720090 - McLeod Health - Carolina Forest Deck\Construct\Play\SSR_PLBG_Carolina Forest Parking Deck_B25.rvt

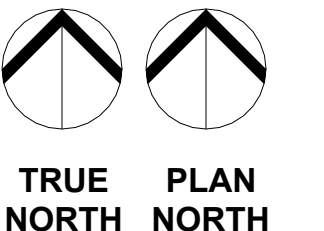
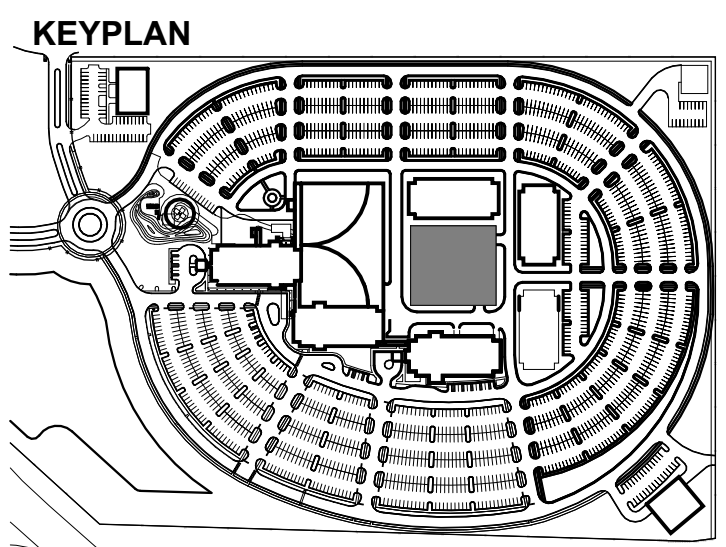


REVISIONS

NO	DATE	DESCRIPTION
A	08.29.2025	ISSUED FOR PRICING AND PERMITTING



**CAROLINA FOREST
PARKING DECK**
MYRTLE BEACH, SOUTH CAROLINA

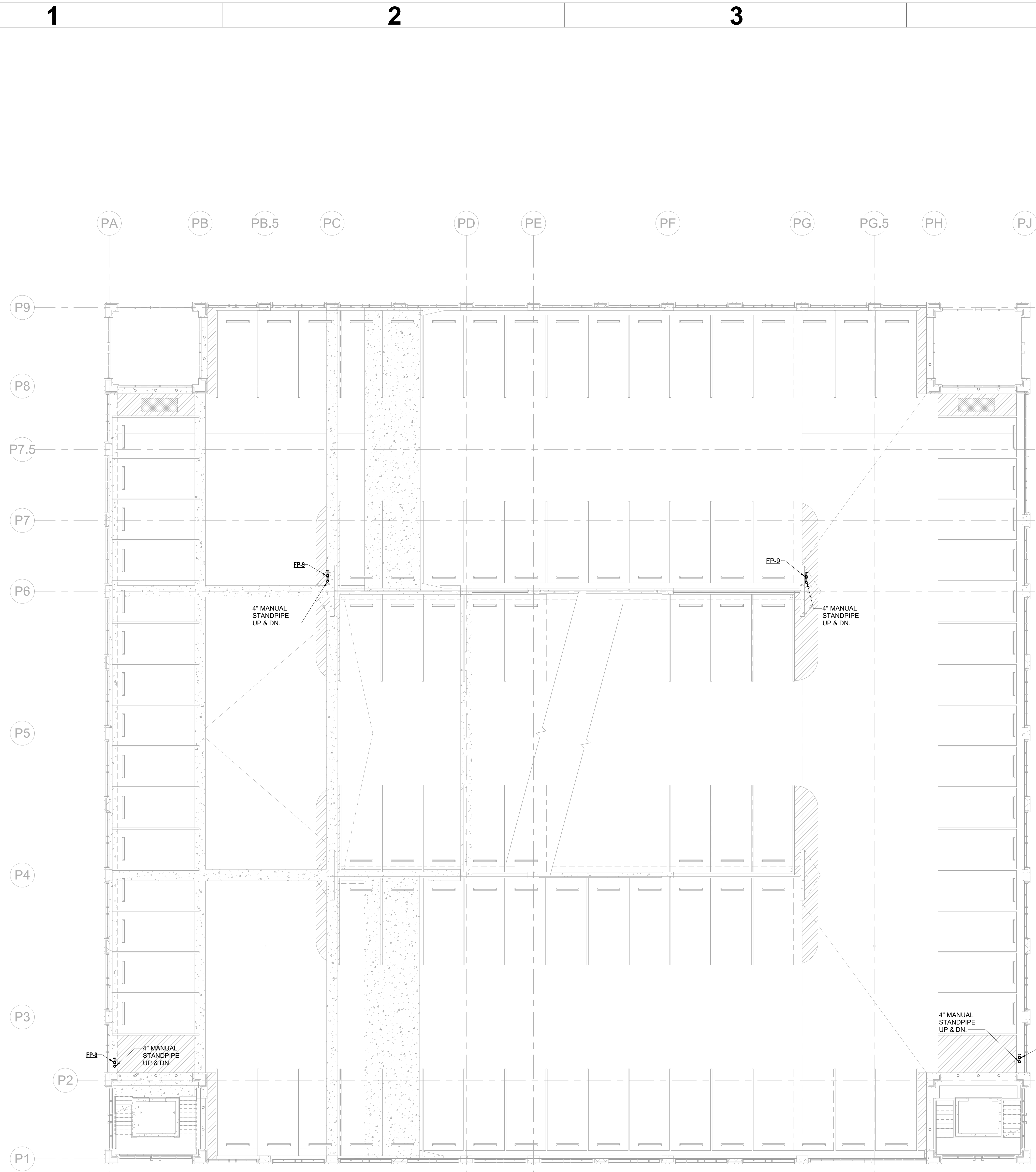


PROJECT NO: 0470.62
DATE: 00.00.2025
COPYRIGHT © 2025 DesignStrategies, LLC

**FIRE
PROTECTION
PLAN – LEVEL
03**

FP131

RENOVATION LEGEND	
SYMBOL	DESCRIPTION
	EXISTING TO REMAIN
	NEW CONSTRUCTION
	CONNECT TO EXISTING AT THIS POINT



3/32" = 1'-0"

1 FIRE PROTECTION PLAN - LEVEL 03

Printed on: 01/20/25 9:03:38 PM
Model File: lssr.com\TeamRoot\Team72\2025\25720090 - McLeod Health - Carolina Forest Deck\Construct\Play\SSR_PL_BG_Carolina Forest Parking Deck_B25.rvt

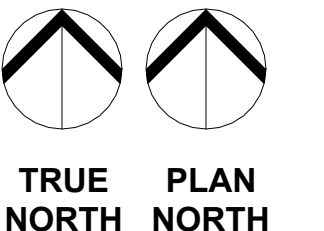
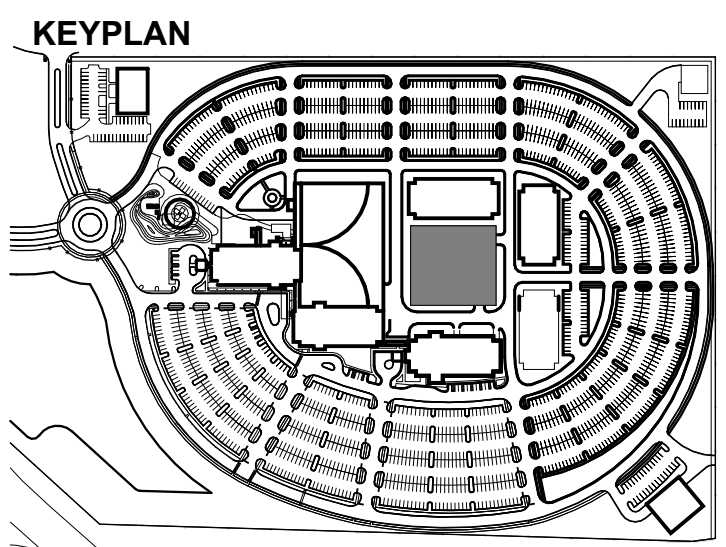


REVISIONS

NO	DATE	DESCRIPTION
A	08.29.2025	ISSUED FOR PRICING AND PERMITTING



**CAROLINA FOREST
PARKING DECK**
MYRTLE BEACH, SOUTH CAROLINA

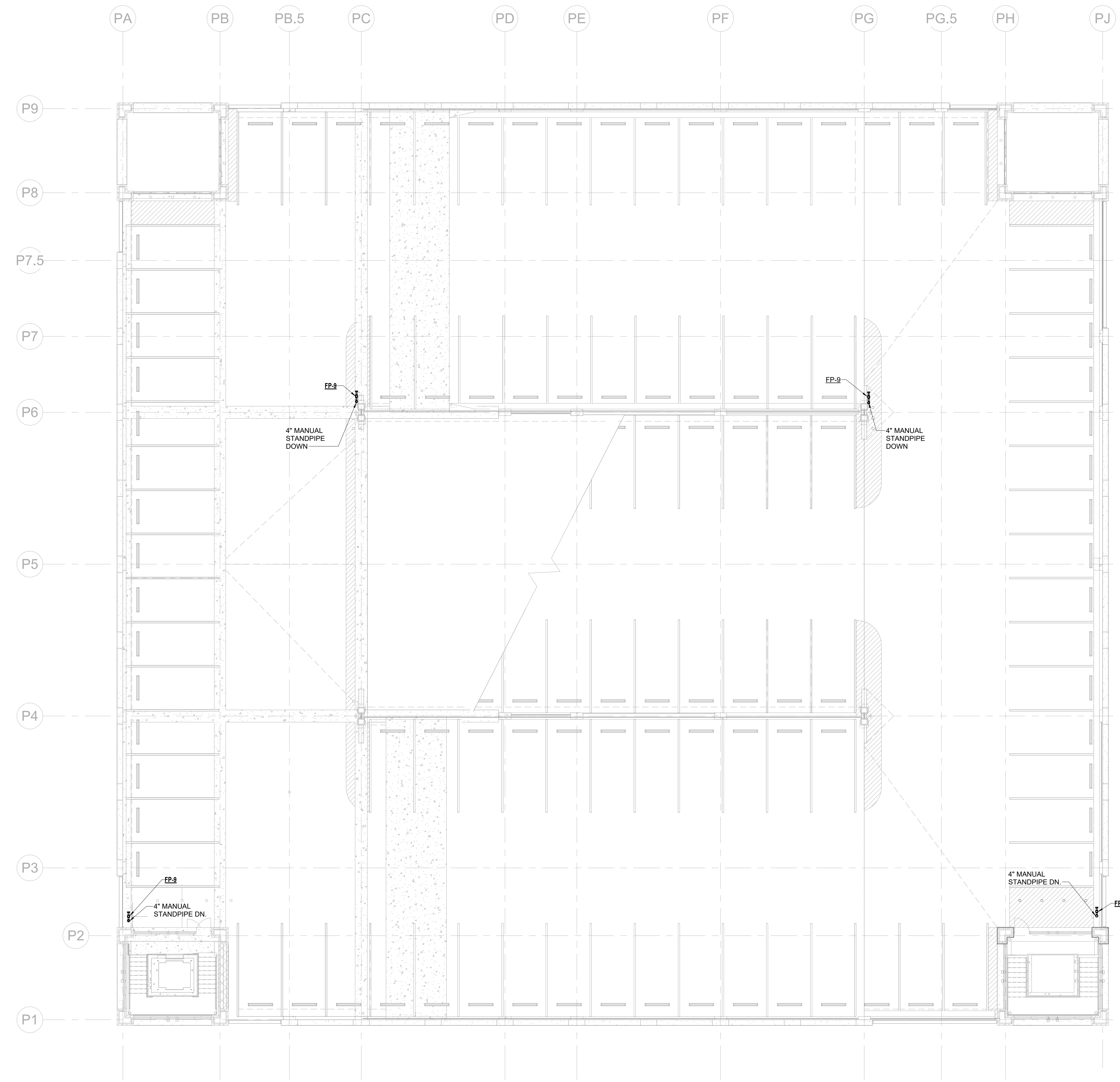


PROJECT NO: 0470.62
DATE: 00.00.2025
COPYRIGHT © 2025 DesignStrategies, LLC

**FIRE
PROTECTION
PLAN – LEVEL
04**

FP141

RENOVATION LEGEND	
SYMBOL	DESCRIPTION
	EXISTING TO REMAIN
	NEW CONSTRUCTION
	CONNECT TO EXISTING AT THIS POINT



3/32" = 1'-0"

1 FIRE PROTECTION PLAN - LEVEL 04

Printed on: 01/20/25 9:05:40 AM
 Model File: lssr.com\TeamRoot\Team72\2025\25720090 - McLeod Health - Carolina Forest Deck\Construction\Play\SSR_PL_BG_Carolina Forest Parking Deck_B25.rvt

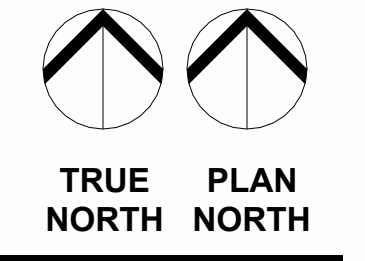
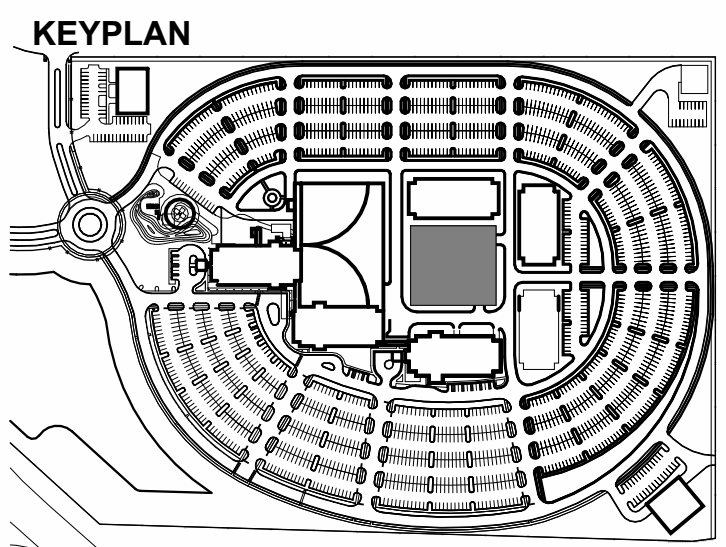


REVISIONS

NO	DATE	DESCRIPTION
A	08.29.2025	ISSUED FOR PRICING AND PERMITTING



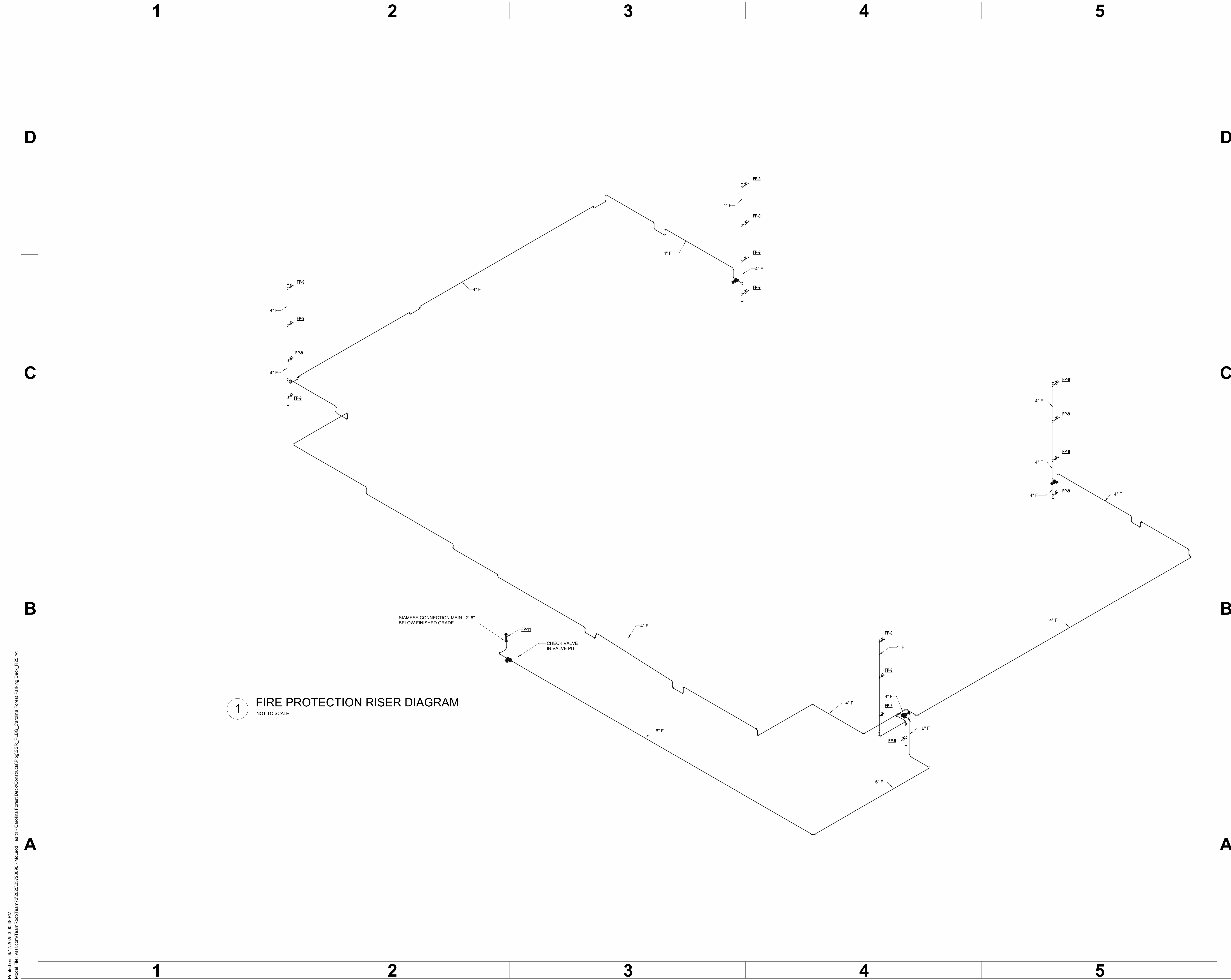
**CAROLINA FOREST
PARKING DECK**
MYRTLE BEACH, SOUTH CAROLINA



PROJECT NO: 0470.62
DATE: 00.00.2025
COPYRIGHT © 2025 DesignStrategies, LLC

FIRE PROTECTION RISER DIAGRAM

FP601



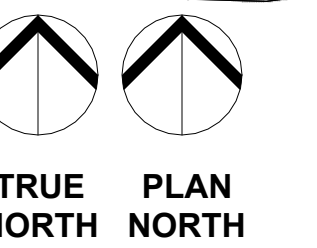
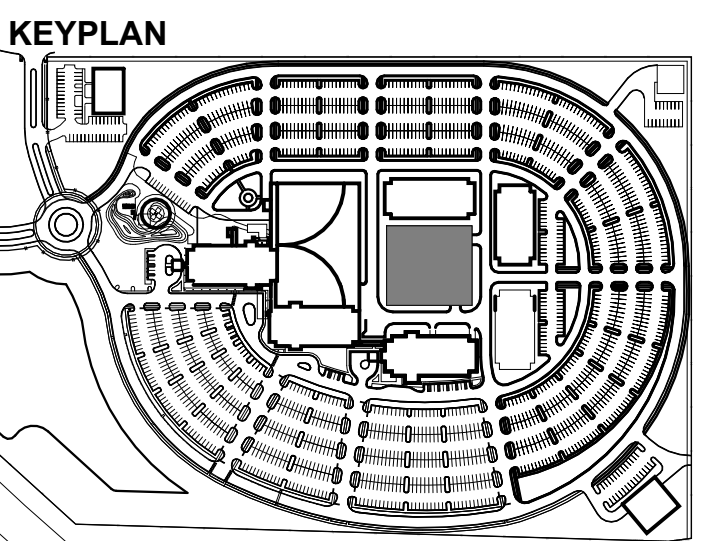
1 FIRE PROTECTION RISER DIAGRAM
NOT TO SCALE

Printed on: 01/20/25 9:04:48 PM
 Model File: lssr.com\TeamRoot\Team72\2025\25720090 - McLeod Health - Carolina Forest Deck\Construct\Play\SSR_PL_BG_Carolina Forest Parking Deck_B25.rvt



REVISIONS

NO	DATE	DESCRIPTION
A	08.29.2025	ISSUED FOR PRICING AND PERMITTING



**PLUMBING
LEGENDS,
SCHEDULES,
NOTES, AND
INDEX**

ALL PLUMBING LEGEND

NOT ALL SYMBOLS MAY BE USED

SYMBOL	ABB.	DESCRIPTION	SYMBOL	ABB.	DESCRIPTION
—CW—	CW	DOMESTIC COLD WATER	—T—	T	PIPE TURN DOWN
---CW---	CW	DOM. COLD WATER (BELOW)	—T—	T	PIPE TURN UP
—HW—	HW	DOMESTIC HOT WATER	—V—	V	BALL VALVE
---HW---	HW	DOMESTIC HOT WATER (BELOW)	—G—	G	GATE VALVE
—HWR—	HWR	DOMESTIC HOT WATER RECIRC.	—C—	C	CHECK VALVE
---HWR---	HWR	DOMESTIC HOT WATER RECIRC. (BELOW)	—B—	B	BALANCING VALVE
—PD—	PD	PUMP DISCHARGE	—P—	P	BUTTERFLY VALVE
---PD---	PD	PUMP DISCHARGE (BELOW)	—PRV—	PRV	PRESSURE REGULATING VALVE
—G—	G	NATURAL GAS	—S—	S	SOLENOID VALVE
—TP—	TP	TRAP PRIMER	—S—	S	STRAINER
—W—	W	WASTE	—R—	R	REDUCER
---W---	W	WASTE (BELOW)	—G—	G	PIPE GUIDE
—V—	V	SANITARY VENT	—A—	A	ANCHOR
—SW—	SW	STORM WATER	—P—	P	PRESSURE GAUGE
---SW---	SW	STORM WATER (BELOW)	—C—	C	PRESSURE SWITCH WITH DEMAND CHECK FITTINGS
—OD—	OD	STORM OVERFLOW DRAIN	—T—	T	THERMOMETER
—A/S—	A/S	AUTOMATIC SPRINKLER SYSTEM	—C—	C	CAP/PLUG
—DPSS—	DPSS	DRY PIPE SPRINKLER SYSTEM	—C—	CO	CLEANOUT (ABOVE CEILING)
—FDR—	FDR	FIRE DRAIN RISER	—U—	U	UNION
—F—	F	FIRE MAIN	—PR—	PR	PRESSURE RELIEF VALVE
—MDSP—	MDSP	MANUAL DRY STANDPIPE SYSTEM	—S—	S	SHOCK ARRESTOR
			—H—	H	HOSE BIBB / WALL HYDRANT
			—FCO—	FCO	FLOOR CLEAN OUT
			—WCO—	WCO	WALL CLEAN OUT
			—FD—	FD	FLOOR DRAIN
			—VTR—	VTR	VENT THRU ROOF
			—IE—	IE	INVERT ELEVATION
			—AFF—	AFF	ABOVE FINISHED FLOOR
			—DCVA—	DCVA	DOUBLE CHECK VALVE ASSEMBLY
			—DDCVA—	DDCVA	DOUBLE DETECTOR CHECK VALVE ASSEMBLY
			—C—	C	CEILING SPRINKLER - UPRIGHT
			—C—	C	CEILING SPRINKLER - CONCEALED
			—C—	C	CEILING SPRINKLER - RECESSED PENDANT
			—S—	S	SIDEWALL SPRINKLER
			—S—	S	SIDEWALL EXTENDED COVERAGE SPRINKLER
			—W—	W	WALL HUNG FIRE EXTINGUISHER
			—F—	F	FIRE EXTINGUISHER CABINET
			—F—	F	FIRE DEPARTMENT CONNECTION

PLUMBING GENERAL NOTES

- CONTRACTOR SHALL VISIT THE SITE AND BECOME FAMILIAR WITH THE PROJECT SCOPE, UTILITY CONNECTIONS AND ALL BUILDING SERVICES. EXISTING SITE UTILITIES SHALL BE FIELD LOCATED FOR EXACT LOCATION AND ELEVATION BEFORE BEGINNING CONSTRUCTION OR DEMOLITION.
- DRAWINGS SHOW KNOWN EXISTING SERVICES, PIPING, FIXTURES, EQUIPMENT, AND CONNECTIONS IN REASONABLE PROXIMITY. CONTRACTOR SHALL FIELD VERIFY EXACT LOCATIONS AND SIZES. ANY DISCREPANCIES AND / OR DEVIATIONS SHALL IMMEDIATELY BE BROUGHT TO THE ARCHITECTS ATTENTION.
- COORDINATE WATER, WASTE, VENT, RAIN WATER AND OTHER PIPING WITH ALL TRADES TO AVOID SPACING AND ROUTING PROBLEMS.
- FIXTURES, EQUIPMENT, CONNECTIONS AND PIPING SHALL BE FURNISHED AND INSTALLED TO MEET OR EXCEED STATE AND LOCAL CODES AND REQUIREMENTS.
- STANDARD DETAILS ILLUSTRATED ON THE DRAWINGS SHALL BE APPLIED IN ALL CASES WHERE THE FEATURE OCCURS IN THE SYSTEM DESIGN.
- PENETRATIONS THROUGH WALLS AND FLOORS SHALL BE SLEEVED, SEALED AND FIRESAFED TO MAINTAIN THE INTEGRITY OF THE WALL AND FLOOR UL FIRE RESISTANCE RATING.
- DRAWINGS ARE SCHEMATIC IN NATURE AND SHALL NOT BE SCALED. CONTRACTOR IS RESPONSIBLE FOR COORDINATING EXACT ROUTING OF ALL SERVICES WITH EXISTING CONDITIONS AND WITH ALL OTHER TRADES.
- SUPPORTS, ANCHOR BOLTS AND HANGERS FOR ALL EQUIPMENT SPECIFIED SHALL CONFORM TO THE SPECIFICATIONS. MISCELLANEOUS STEEL BRACING SUPPORTS AND REINFORCING STEEL NEEDED TO SUPPORT EQUIPMENT AND PIPING SYSTEMS SPECIFIED SHALL BE FURNISHED AND INSTALLED AS PART OF THE WORK.
- MAINTAIN ACCESSIBILITY OF ALL EQUIPMENT AND VALVES. PROVIDE ACCESS PANELS AS REQUIRED. COORDINATE PLACEMENT WITH THE ARCHITECT PRIOR TO INSTALLATION.
- INSTALL EXTERIOR WALL HYDRANTS AT 18" ABOVE FINISHED GRADE.
- CONTRACTOR SHALL COORDINATE WITH THE ARCHITECT PRIOR TO CUTTING ANY OPENING IN THE STRUCTURE. COORDINATE SLEEVING OF BEAMS AND CORING OF STRUCTURE WITH STRUCTURAL DRAWINGS AND DETAILS PRIOR TO INSTALLATION.
- CONTRACTOR SHALL PROVIDE TRAP PRIMERS ON ALL FLOOR DRAINS NOT RECEIVING CONSTANT DISCHARGE FROM FIXTURES AND/OR EQUIPMENT AND AS REQUIRED BY STATE AND LOCAL CODES.
- ALL STORM WATER PIPING BELOW GRADE IN AREAS SUBJECT TO TRAFFIC WITH LESS THAN TWO FEET OF EARTH COVER SHALL BE HEAVY DUTY TRAFFIC RATED.
- PROVIDE PIPING EXPANSION JOINTS AT EACH PIPE CROSSING AN INTERIOR BUILDING EXPANSION JOINT.
- A DOUBLE WYE OR DOUBLE COMBINATION WYE AND 1/8 BEND FITTING IS NOT ACCEPTABLE IN A HORIZONTAL POSITION FOR A DRAINAGE SYSTEM.

PLUMBING FIXTURE CONNECTION SCHEDULE

NOTES:
1. REFER TO FLOOR PLANS FOR DRAIN CONNECTION AND PIPE SIZES.

DESIGNATION	FIXTURE DESCRIPTION	COLD WATER	HOT WATER	DRAIN	VENT	NOTES
HB-1	HOSE BIBB (MECH. EQUIP. ROOM & Parking Deck) 1. FIXTURE: ZURN Z134XL-P34, INTEGRAL STOPS, AND VACUUM BREAKER THREADED OUTLET. 2. MOUNTING: MOUNT FAUCET 36" A.F.F.	3/4"	--			
PD-1	PARKING DECK DRAIN 1. FIXTURE: ZURN Z520, DURA-COATED CAST IRON BODY WITH BOTTOM OUTLET AND COMBINATION INVERTIBLE MEMBRANE CLAMP, VERTICALLY ADJUSTABLE NICKEL BRONZE HEAD, AND FLOOR FLANGE.	--	--	--	--	1.

ELEVATOR SUMP PUMP SCHEDULE

GENERAL NOTES:
REMARKS:
A. FURNISH CONTROL PANEL FOR PUMP OPERATION. CONTROL PANEL TO BE SUPPLIED WITH PUMP OPERATION FLOAT CONTROLS, BAS DRY CONTACTS AND ALARMS.
B. CONTROL PANEL AND SEPARATOR ARE NOT PERMITTED IN ELEVATOR SHAFT OR CONTROL ROOM. REFER TO FLOOR PLANS FOR LOCATION OF CONTROL PANEL.
C. COORDINATE REQUIRED CONDUIT WITH ELECTRICAL CONTRACTOR.

DESIGNATION	MANUFACTURER	MODEL NUMBER	GPM	HEIGHT	TOTAL HEAD FT	MOTOR HP	RPM	ELECTRICAL VOLTAGE	PHASE	REMARKS
ESP-1	STANCOR	WSE-50-115-1	50	1' - 7 13/32"	20	1/2	3600	120 V	1	A,B,C

PIPING MATERIALS SCHEDULE

GENERAL NOTES:
1. SEE SPECIFICATIONS FOR ADDITIONAL REQUIREMENTS AND ACCESSORIES.

PLUMBING SYSTEM	PLUMBING MATERIAL DESCRIPTION
STORM DRAIN PIPING	STANDARD WEIGHT CAST IRON PIPE, BELL & SPIGOT JOINTS (BELOW SLAB)
STORM DRAIN PIPING	STANDARD WEIGHT CAST IRON PIPE, WITH NO HUB JOINTS (ABOVE SLAB)
SANITARY DRAIN PIPING	STANDARD WEIGHT CAST IRON PIPE, BELL & SPIGOT JOINTS (BELOW SLAB)
SANITARY DRAIN PIPING	STANDARD WEIGHT CAST IRON PIPE, WITH NO HUB JOINTS (ABOVE SLAB)
VENT PIPING	STANDARD WEIGHT CAST IRON PIPE, WITH NO HUB JOINTS (ABOVE SLAB)
DOMESTIC WATER PIPING (ABOVE SLAB)	TYPE "L", COPPER TUBING, WITH WROUGHT COPPER FITTINGS (ASTM B88).
DOMESTIC WATER PIPING (BELOW SLAB)	TYPE "K", COPPER TUBING, WITH BRAZED WROUGHT COPPER FITTINGS (ASTM B88).

SHEET INDEX

NUMBER	SHEET NAME
P001	PLUMBING LEGENDS, SCHEDULES, NOTES, AND INDEX
P111	PLUMBING PLAN - LEVEL 01
P121	PLUMBING PLAN - LEVEL 02
P131	PLUMBING PLAN - LEVEL 03
P141	PLUMBING PLAN - LEVEL 04
P601	PLUMBING PLAN - RISER DIAGRAMS

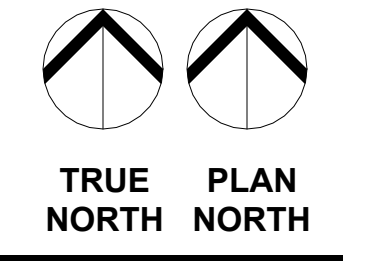
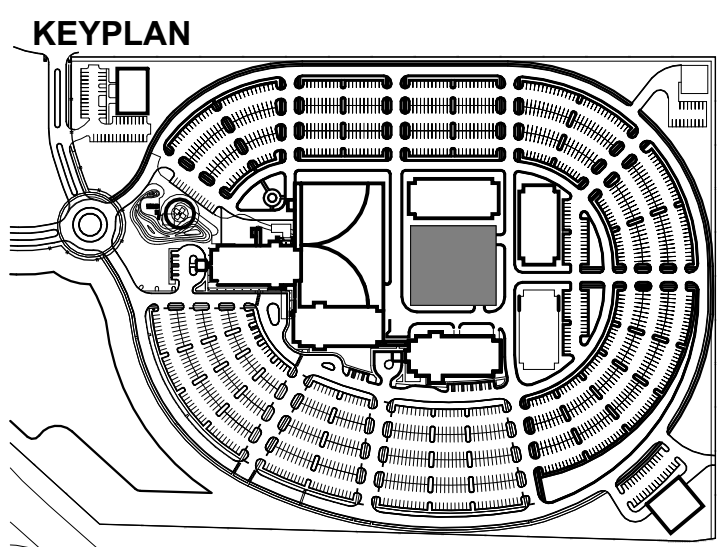
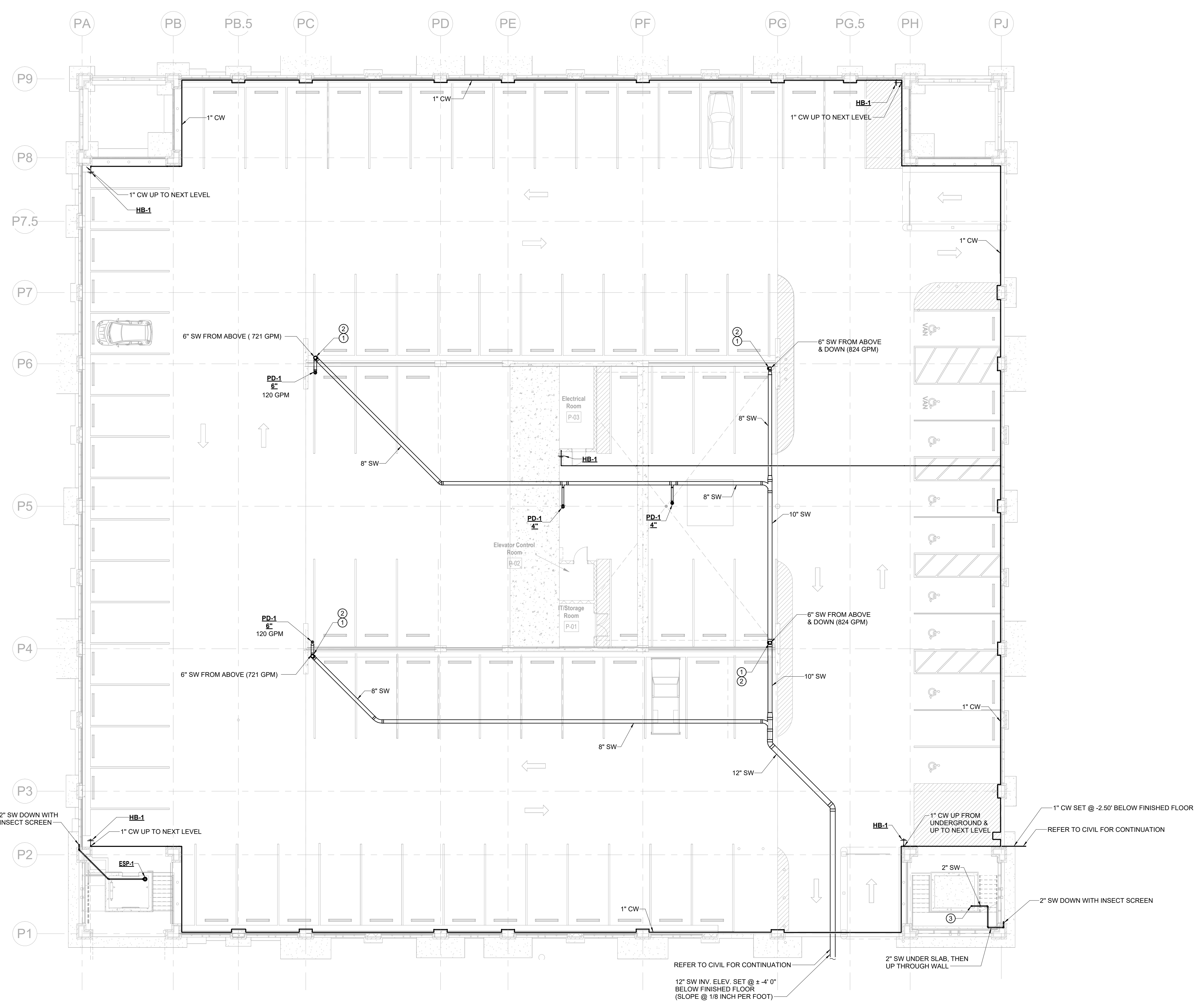


RENOVATION LEGEND	
SYMBOL	DESCRIPTION
	EXISTING TO REMAIN
	NEW CONSTRUCTION
	CONNECT TO EXISTING AT THIS POINT

SHEET KEY NOTES	
1.	PROVIDE CRASH PROTECTION.
2.	CLEAN OUT TYPICAL AT BOTTOM OF STORM WATER VERTICAL PIPE.
3.	CAP FOR FUTURE SUMP PUMP.

SHEET GENERAL NOTES	
A.	CW SYSTEM TO BE DRAINED DURING WINTER CONDITIONS. USE SOUTH EAST HOSE BIB AND SHUTOFF VALVE.

REVISIONS		
NO	DATE	DESCRIPTION
A	08.29.2025	ISSUED FOR PRICING AND PERMITTING



Printed on: 01/20/25 9:06:53 PM
Model File: lssr.com\TeamRoot\Team72\2025\25720090 - McLeod Health - Carolina Forest Deck\Construct\Play\SSR_PL_BG_Carolina Forest Parking Deck_B25.rvt

1 PLUMBING PLAN - LEVEL 01

3/32" = 1'-0"



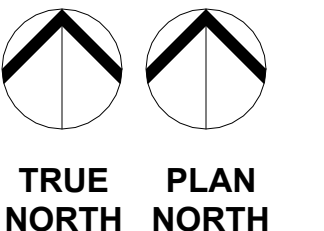
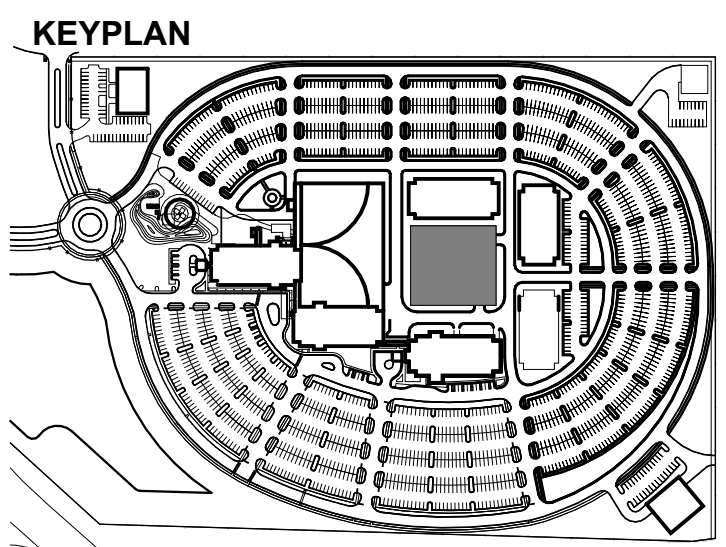
RENOVATION LEGEND	
SYMBOL	DESCRIPTION
	EXISTING TO REMAIN
	NEW CONSTRUCTION
	CONNECT TO EXISTING AT THIS POINT

Ⓢ SHEET KEY NOTES
1. PROVIDE CRASH PROTECTION.

REVISIONS		
NO	DATE	DESCRIPTION
A	08.29.2025	ISSUED FOR PRICING AND PERMITTING



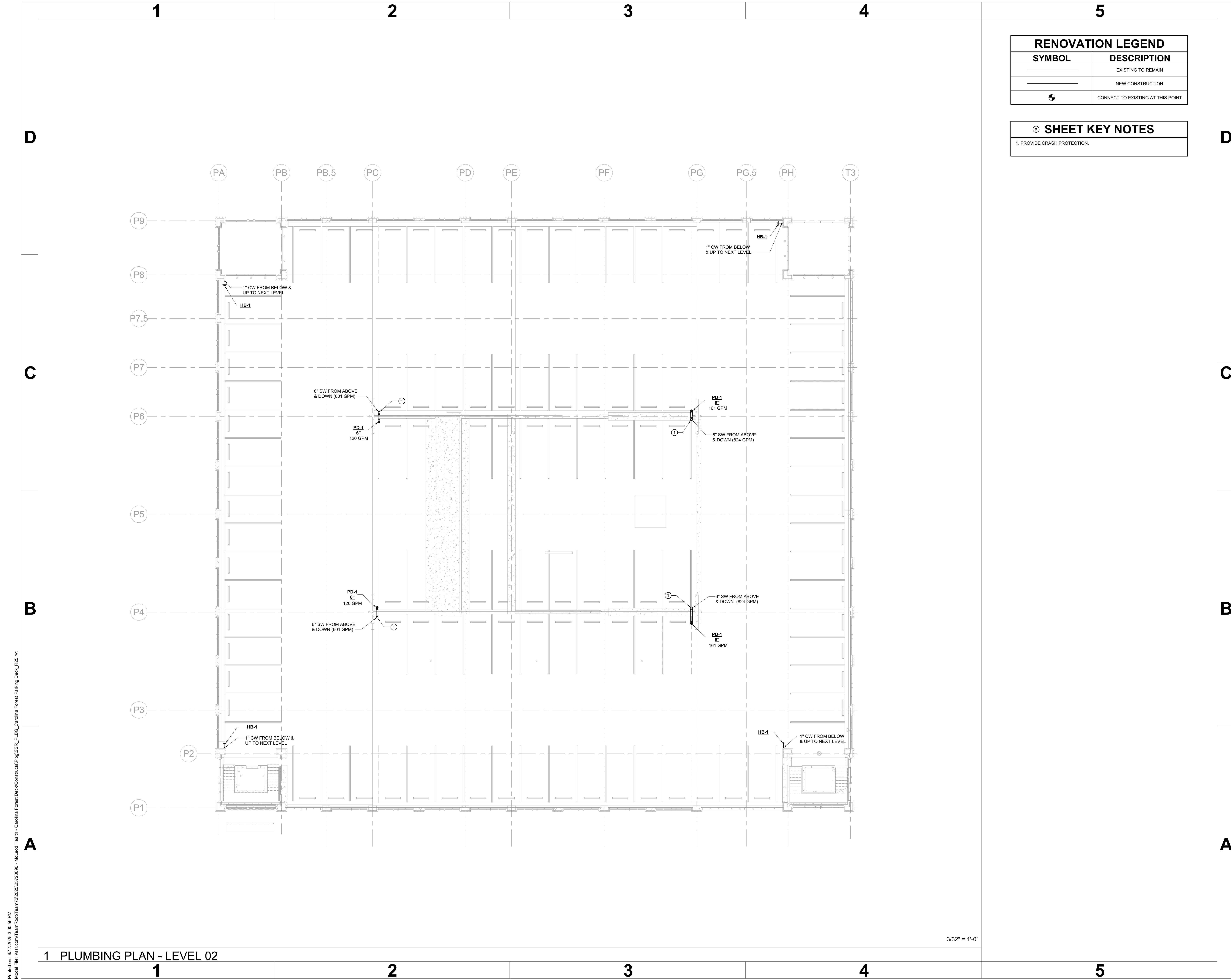
**CAROLINA FOREST
PARKING DECK**
MYRTLE BEACH, SOUTH CAROLINA



PROJECT NO: 0470.62
DATE: 00.00.2025
COPYRIGHT © 2025 DesignStrategies, LLC

**PLUMBING
PLAN – LEVEL
02**

P121



3/32" = 1'-0"

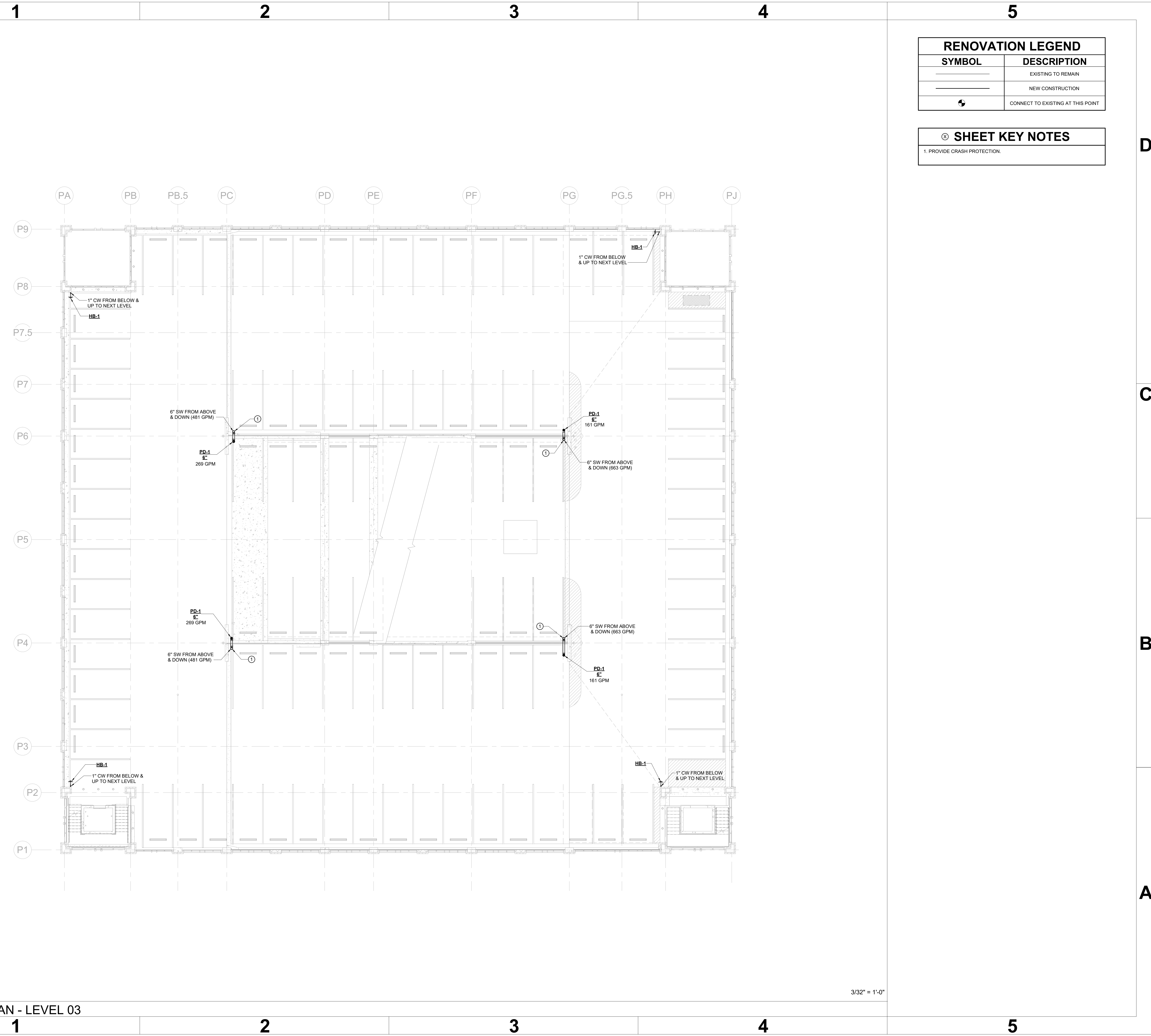
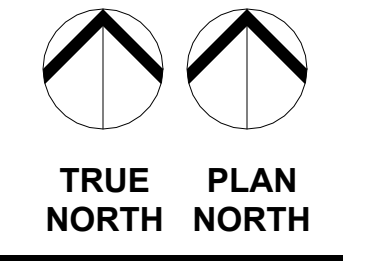
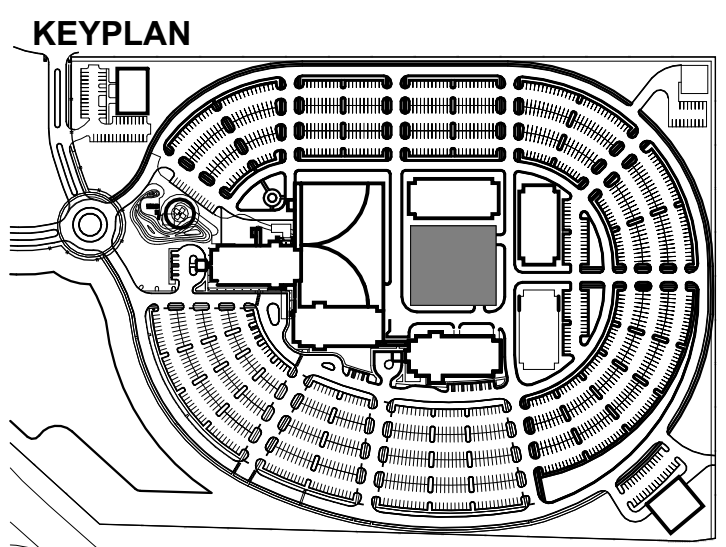
1 PLUMBING PLAN - LEVEL 02

Printed on: 01/20/25 3:05:56 PM
 Model File: Issr.com\TeamRoot\Team72\2025\25720090 - McLeod Health - Carolina Forest Deck\Construct\Plg\SSR_PL_BG_Carolina Forest Parking Deck_B25.rvt

RENOVATION LEGEND	
SYMBOL	DESCRIPTION
	EXISTING TO REMAIN
	NEW CONSTRUCTION
	CONNECT TO EXISTING AT THIS POINT

Ⓢ SHEET KEY NOTES
1. PROVIDE CRASH PROTECTION.

REVISIONS		
NO	DATE	DESCRIPTION
A	08.29.2025	ISSUED FOR PRICING AND PERMITTING



1 PLUMBING PLAN - LEVEL 03

3/32" = 1'-0"

Printed on: 01/20/25 3:05:50 PM
Model File: lssr.com\TeamRoot\Team72\2025\25720090 - McLeod Health - Carolina Forest Deck\Construct\Play\SSR_PL_BG_Carolina Forest Parking Deck_B25.rvt



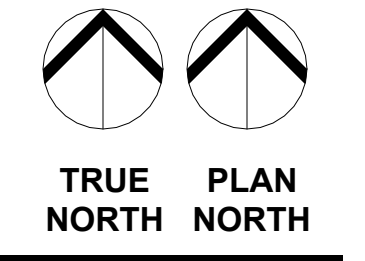
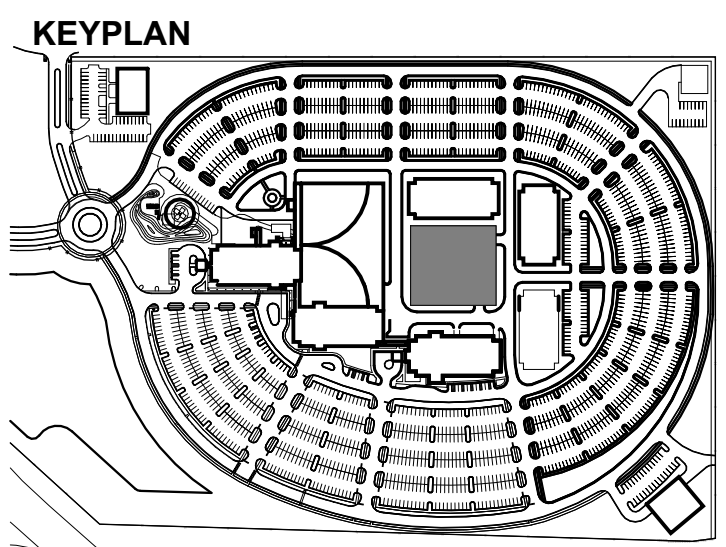
RENOVATION LEGEND	
SYMBOL	DESCRIPTION
	EXISTING TO REMAIN
	NEW CONSTRUCTION
	CONNECT TO EXISTING AT THIS POINT

REVISIONS

NO	DATE	DESCRIPTION
A	08.29.2025	ISSUED FOR PRICING AND PERMITTING

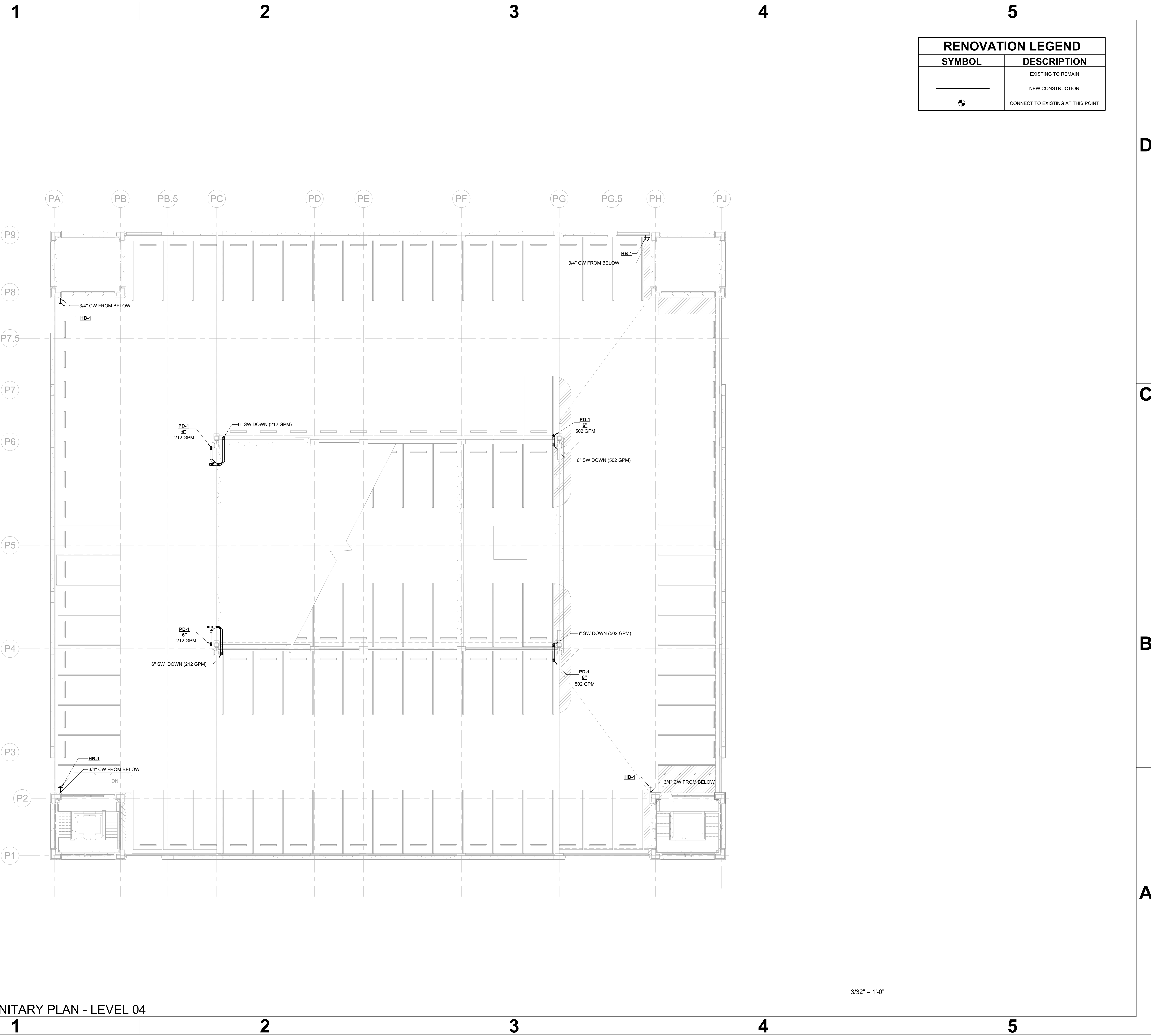


**CAROLINA FOREST
PARKING DECK**
MYRTLE BEACH, SOUTH CAROLINA



PROJECT NO: 0470.62
DATE: 00.00.2025
COPYRIGHT © 2025 DesignStrategies, LLC

**PLUMBING
PLAN – LEVEL
04**



3/32" = 1'-0"

1 PLUMBING SANITARY PLAN - LEVEL 04

Printed on: 01/20/25 9:01:01 PM
 Model File: \\ssr.com\TeamRoot\Team72\2025\25720090 - McLeod Health - Carolina Forest Deck\Construct\Play\SSR_PL_BG_Carolina Forest Parking Deck_B25.rvt



3600 Arco Corporate Drive,
Suite 175
Charlotte, NC 28273
(800) 545-6732
www.ssr-inc.com
SSR Project #: 25720090

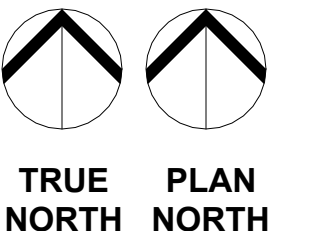
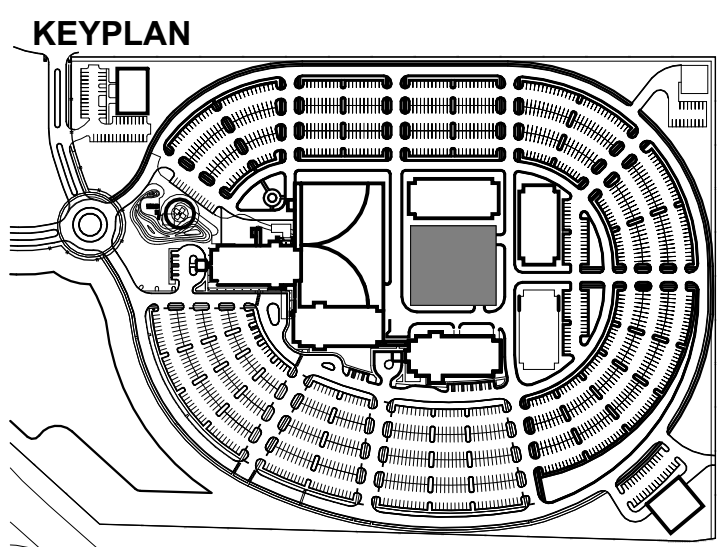
REVISIONS

NO	DATE	DESCRIPTION
A	08.29.2025	ISSUED FOR PRICING AND PERMITTING



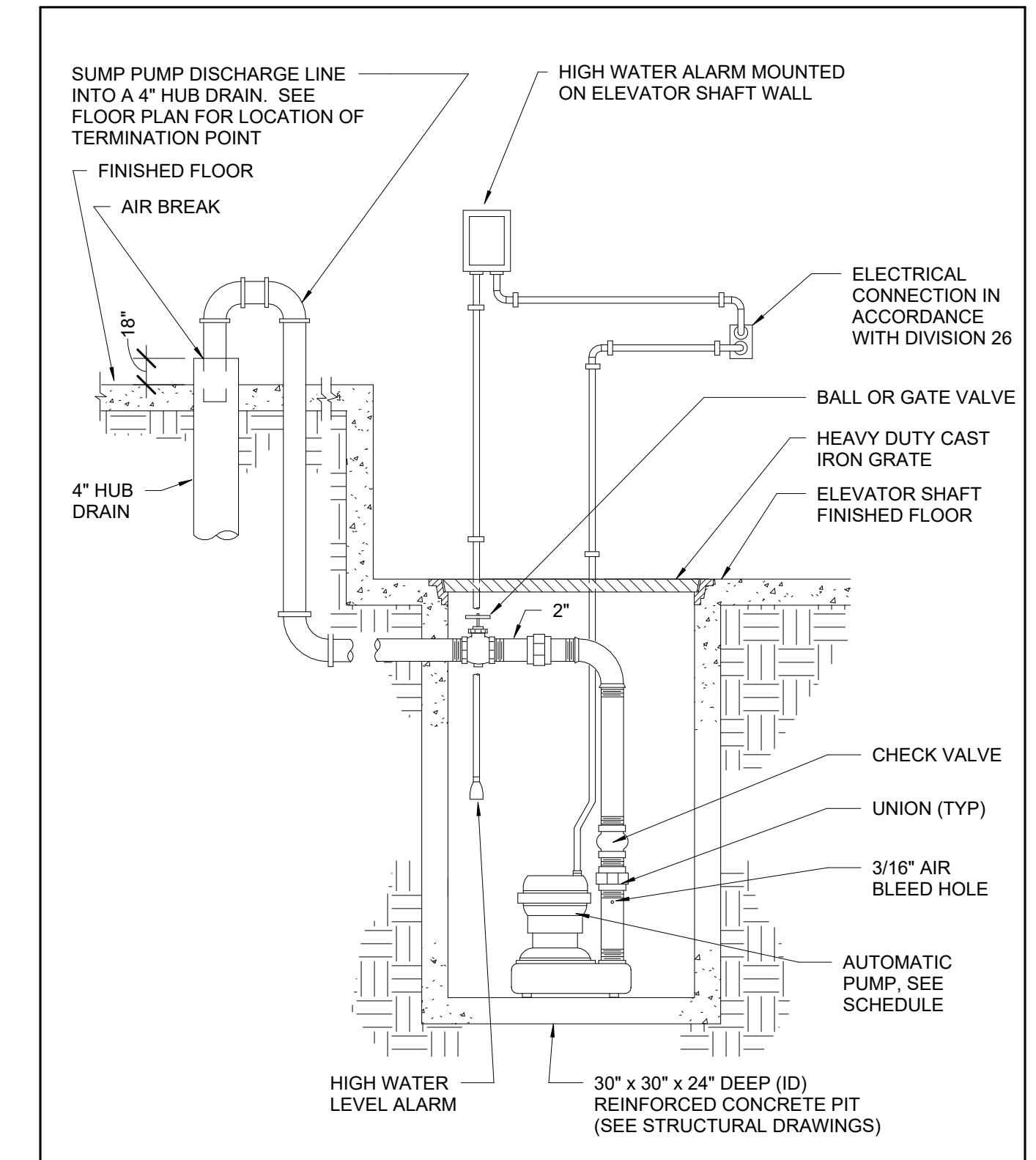
CAROLINA FOREST
PARKING DECK

MYRTLE BEACH, SOUTH CAROLINA

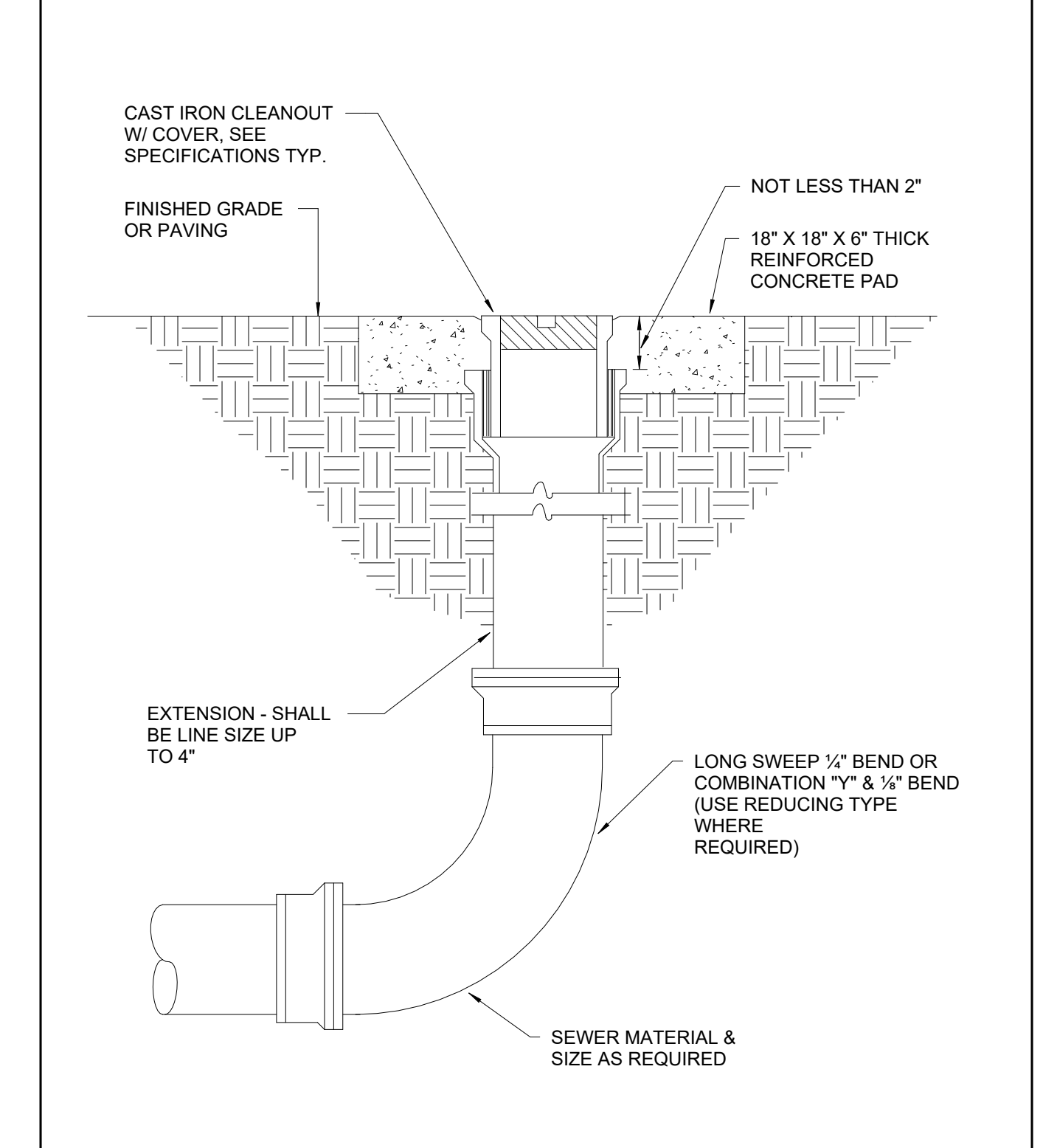


PROJECT NO: 0470.62
DATE: 00.00.2025
COPYRIGHT © 2025 DesignStrategies, LLC

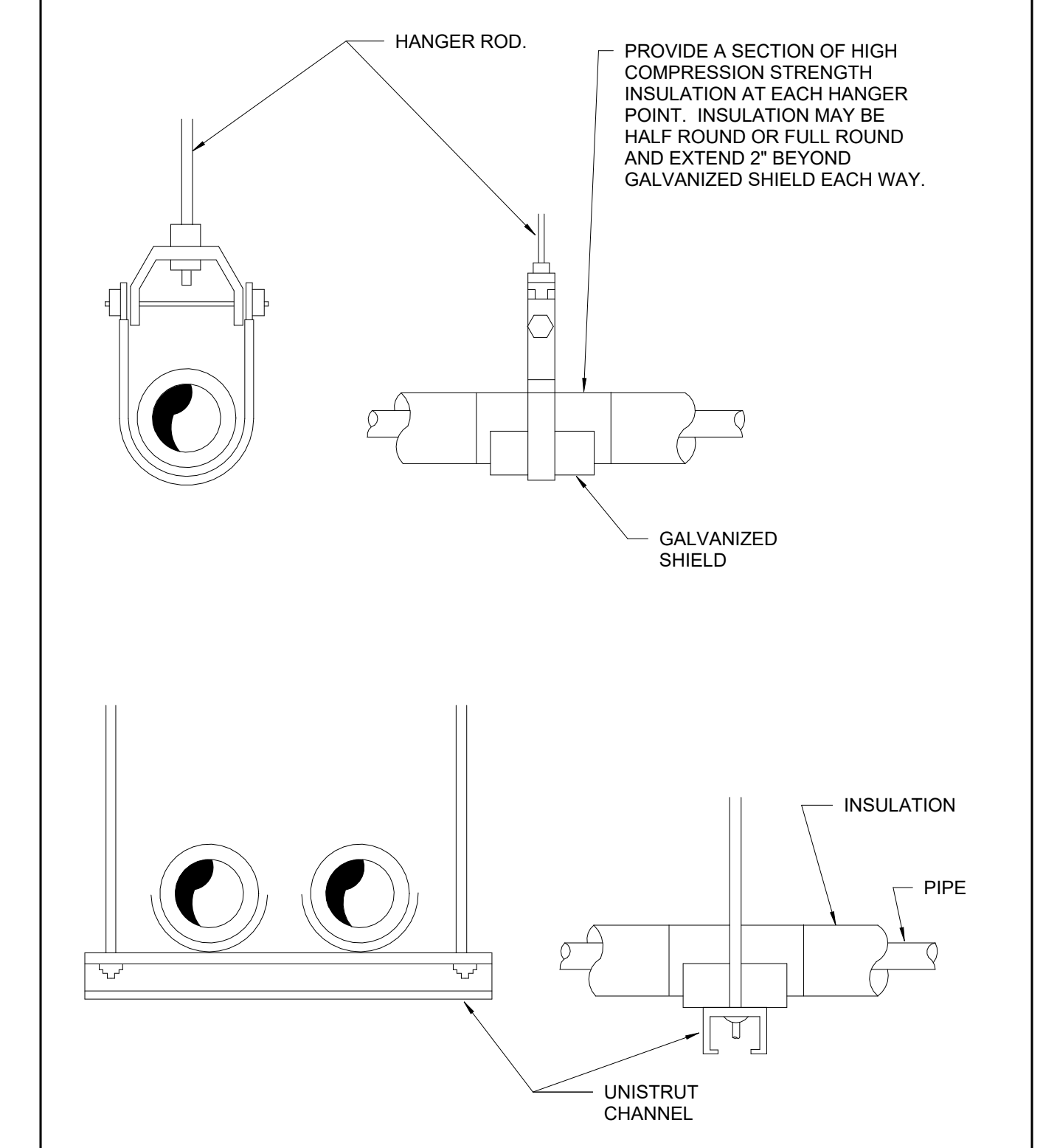
PLUMBING
DETAILS



SIMPLEX ELEVATOR SUMP PUMP 3



FLOOR CLEANOUT 2



WATER PIPING HANGER 1

Printed on: 01/20/25 3:01:02 PM
 Model File: Issr.com\TeamRoot\Team72\2025\25720090 - McLeod Health - Carolina Forest Deck\Construct\Play\SSR_PLBG_Carolina Forest Parking Deck_B25.rvt

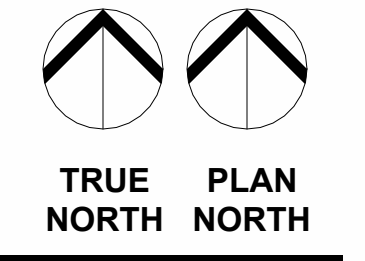
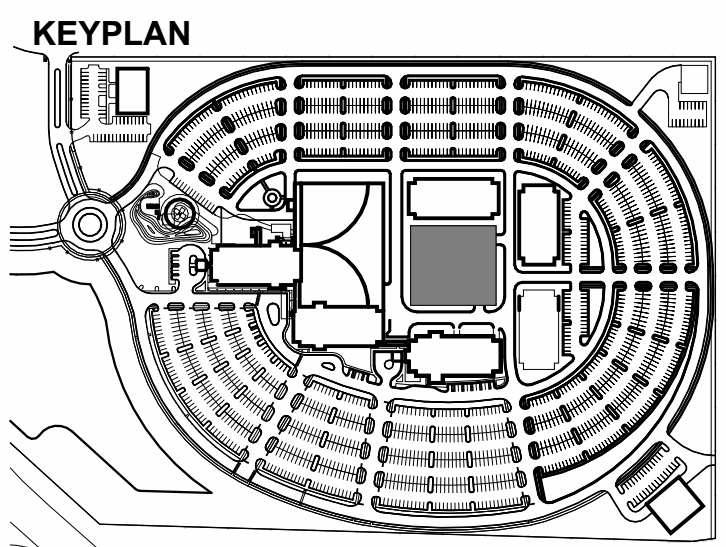


REVISIONS

NO	DATE	DESCRIPTION
A	08.29.2025	ISSUED FOR PRICING AND PERMITTING

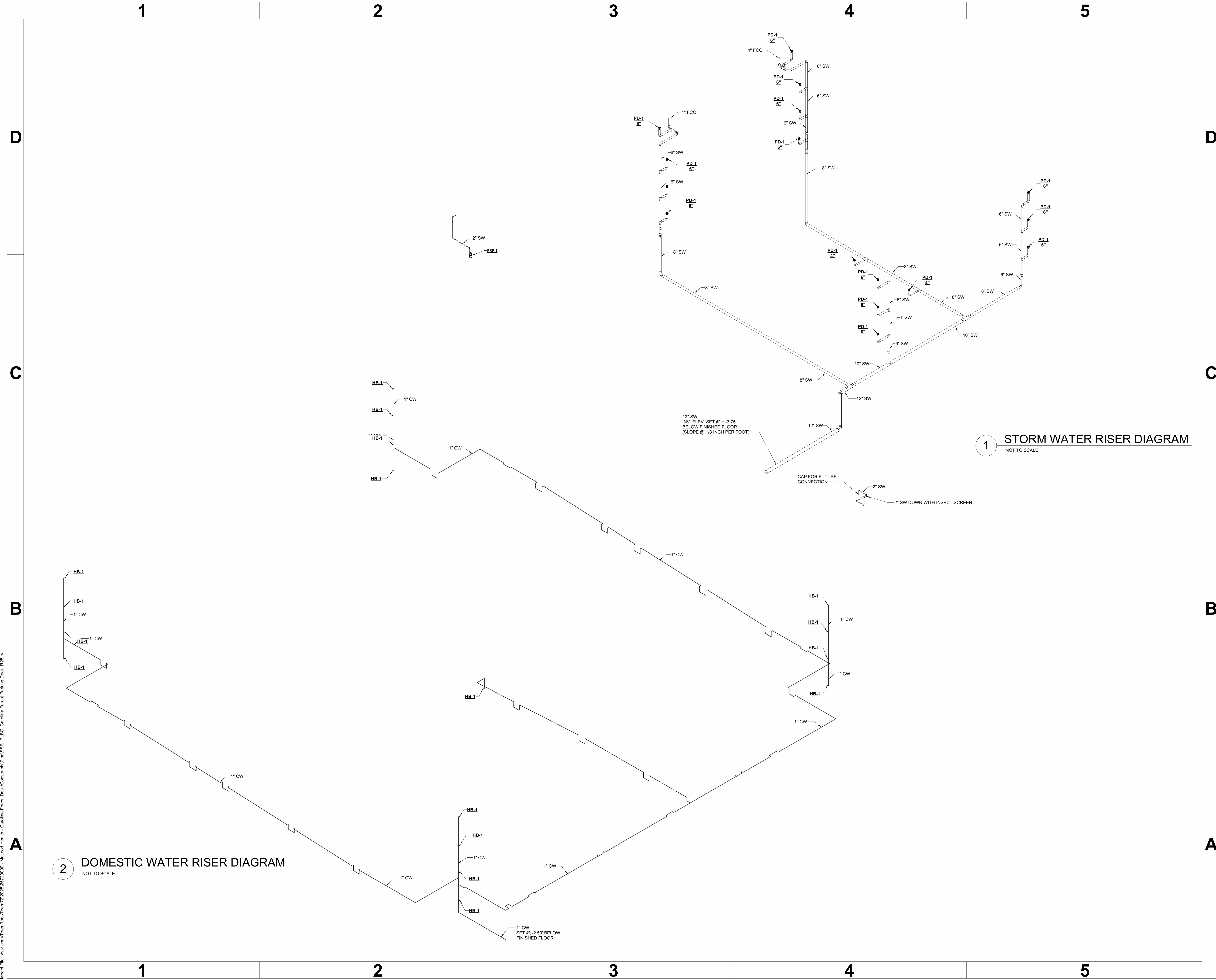


**CAROLINA FOREST
PARKING DECK**
MYRTLE BEACH, SOUTH CAROLINA



PROJECT NO: 0470.62
DATE: 00.00.2025
COPYRIGHT © 2025 DesignStrategies, LLC

**PLUMBING
PLAN - RISER
DIAGRAMS**



Printed on: 01/20/25 3:01:12 PM
 Model File: lssr.com\TeamRoot\Team72\2025\25720090 - McLeod Health - Carolina Forest Deck\Construct\Play\SSR_PL_BG_Carolina Forest Parking Deck_B25.rvt