



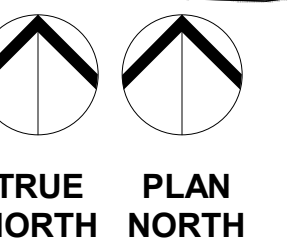
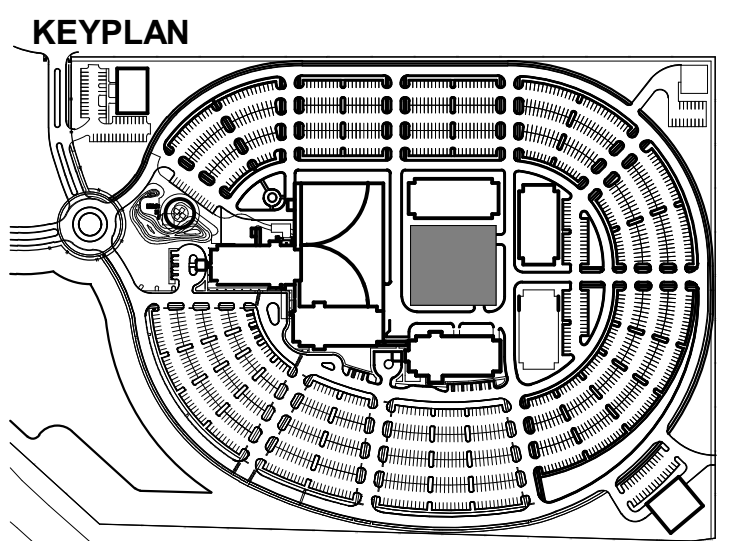
REVISIONS

NO	DATE	DESCRIPTION
A	08.29.2025	ISSUED FOR PRICING AND PERMITTING

McLeod Health
The Choice for Medical Excellence.

**CAROLINA FOREST
PARKING DECK**

MYRTLE BEACH, SOUTH CAROLINA



PROJECT NO: 0470.62
DATE: 08.29.2025
COPYRIGHT © 2025 DesignStrategies, LLC

**MECHANICAL
LEGENDS,
NOTES, AND
INDEX**

M001

1

2

3

4

5

MECHANICAL LEGEND (NOT ALL SYMBOLS MAY BE USED)

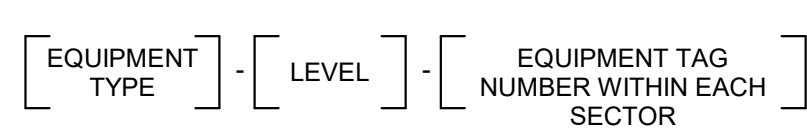
PIPING			
SYMBOL / ABBREVIATION	DESCRIPTION	SYMBOL / ABBREVIATION	DESCRIPTION
—CHR—	CHILLED WATER RETURN	⊞	GATE VALVE
—CHS—	CHILLED WATER SUPPLY	⊞	BALL VALVE
—PCHR—	PRIMARY CHILLED WATER RETURN	⊞	BUTTERFLY VALVE
—PCHS—	PRIMARY CHILLED WATER SUPPLY	⊞	CONTROL VALVE, 2 WAY
—CD—	CONDENSATE DRAIN	⊞	CONTROL VALVE, 3 WAY
—CWR—	CONDENSER WATER RETURN	⊞	CHECK VALVE - SWING
—CWS—	CONDENSER WATER SUPPLY	⊞	CHECK VALVE - WAFER
—HWR—	HEATING WATER RETURN	⊞	STRAINER
—HWS—	HEATING WATER SUPPLY	⊞	STRAINER & BLOWDOWN VALVE
—D—	DRAIN LINE	⊞	BALANCING VALVE
—HPS—	HIGH PRESSURE STEAM	⊞	PRESSURE REDUCING VALVE
—HPR—	HIGH PRESSURE CONDENSATE RETURN	⊞	OS & Y VALVE
—MPS—	MEDIUM PRESSURE STEAM	⊞	PRESSURE RELIEF VALVE
—MPR—	MED. PRESSURE CONDENSATE RETURN	⊞	COMPANION FLANGE
—LPS—	LOW PRESSURE STEAM	⊞	UNION
—LPR—	LOW PRESSURE CONDENSATE RETURN	⊞	PIPE GUIDE
—PCR—	PUMPED CONDENSATE RETURN	⊞	PIPE ANCHOR
—FSHRR—	FOOD SERVICE HEAT REJECTION RETURN	⊞	FLEXIBLE CONNECTOR
—FSHRS—	FOOD SERVICE HEAT REJECTION SUPPLY	⊞	THERMOMETER WELL
—GCHS—	GLYCOL CHILL WATER SUPPLY	⊞	PETE'S PLUG
—GCHR—	GLYCOL CHILL WATER RETURN	⊞	VALVE WITH BLIND FLANGE
—GHWS—	GLYCOL HEATING WATER SUPPLY	⊞	CAP/PLUG
—GHWR—	GLYCOL HEATING WATER RETURN	⊞	STEAM TRAP
—GTS—	GEOTHERMAL SUPPLY	⊞	END OF MAIN DRIP
—GTR—	GEOTHERMAL RETURN	⊞	PRESSURE REDUCING STATION
—HPWS—	HEAT PUMP WATER SUPPLY	⊞	PRESSURE GAUGE
—HPWR—	HEAT PUMP WATER RETURN	⊞	THERMOMETER
—FOR—	FUEL OIL RETURN	⊞	PRESSURE REDUCING VALVE
—FOS—	FUEL OIL SUCTION	⊞	PRESSURE RELIEF VALVE
—FOV—	FUEL OIL VENT	⊞	PRESSURE REDUCING STATION
—RHGB—	REFRIGERANT HOT GAS BYPASS	⊞	FLOW METER
—RL—	REFRIGERANT LIQUID		
—RS—	REFRIGERANT SUCTION		
—RV—	RELIEF VENT		
	DIRECTION OF FLOW		
	REDUCER		
	SLOPE PIPE DOWN IN THIS DIRECTION		
	ELBOW UP		
	ELBOW DOWN		
	TEE - TAKEOFF		
	BRANCH PIPE CONNECTION		
	TEE - OUTLET DOWN		
	TEE - OUTLET UP		

MECHANICAL EQUIPMENT NAMING CONVENTION

ABB.	DESCRIPTION	ABB.	DESCRIPTION	ABB.	DESCRIPTION
AC	AIR COMPRESSOR	DOA	DEDICATED OUTSIDE AIR	MAF	MAKE-UP AIR FAN
ACC	AIR COOLED CHILLER	EAV	EXHAUST AIR VALVE	MAU	MAKE-UP AIR UNIT
AFM	AIRFLOW MONITOR	EF	EXHAUST FAN	PCHP	PRIMARY CHILLED WATER PUMP
AHU	AIR HANDLING UNIT	ERV	ENERGY RECOVERY VENTILATOR	PDU	POOL DEHUMIDIFICATION UNIT
AS	AIR SEPARATOR	ET	EXPANSION TANK	PRS	PRESSURE REDUCING STATION
ATU	AIR TERMINAL UNIT	FCU	FAN COIL UNIT	RAD	REFRIGERATED AIR DRYER
B	BOILER	FFU	FAN FILTER UNIT	RAF	RETURN AIR FAN
BC	BLOWER COIL	FOP	FUEL OIL PUMP	RAV	RETURN AIR VALVE
BFU	BOILER FEED UNIT	FT	FLASH TANK	REF	RELIEF AIR FAN
BT	BUFFER TANK	FTR	FINNED TUBE RADIATOR	RH	RADIANT HEAT PANEL
CB	CHILLED BEAM	GVH	GRAVITY VENT HOOD	RTU	ROOFTOP PACKAGE UNIT
CH	CHILLER	H	HUMIDIFIER	SAF	SUPPLY AIR FAN
CHP	CHILLED WATER PUMP	HP	HEAT PUMP	SAT	SOUND ATTENUATOR
CH-XT	CHILLED WATER EXPANSION TANK	HC	HEATING COIL (STEAM OR HW)	SAV	SUPPLY AIR VALVE
CP	CONDENSATE PUMP	HT	HEAT TRACE	SCHP	SECONDARY CHILLED WATER PUMP
CRAC	COMPUTER ROOM A/C UNIT	HVLS	HIGH VOLUME LOW SPEED FAN	SEF	SMOKE EXHAUST FAN
CT	COOLING TOWER	HWP	HEATING WATER PUMP	SSAC	SPLIT SYSTEM AC UNIT
CU	CONDENSING UNIT	HWCP	HEATING WATER CIRCULATION PUMP	UH	UNIT HEATER
CWP	CONDENSER WATER PUMP	HW-XT	HEATING WATER EXPANSION TANK	VFD	VARIABLE FREQUENCY DRIVE
DA	DEAERATOR	HX	HEAT EXCHANGER	VRV	VARIABLE REFRIGERANT FAN COIL UNIT
DAC	AIR CURTAIN	IEF	ISOLATION EXHAUST FAN		
DC	DRY COOLER	KEF	KITCHEN HOOD EXHAUST FAN		

EQUIPMENT NOMENCLATURE

EQUIPMENT IDENTIFICATION TAGS ARE COMPOSED AS FOLLOWS:



MECHANICAL GENERAL NOTES

- CONTRACTOR SHALL VISIT THE SITE AND BECOME FAMILIAR WITH THE PROJECT SCOPE, UTILITY CONNECTIONS, AND ALL BUILDING SERVICES.
- PROVIDE HOUSEKEEPING PADS UNDER ALL FLOOR MOUNTED EQUIPMENT. HOUSEKEEPING PAD SIZE AND FLOOR DRAIN LOCATIONS SHALL BE COORDINATED WITH THE SIZE AND LOCATION OF EXACT EQUIPMENT TO BE INSTALLED.
- STANDARD DETAILS ILLUSTRATED ON THE DRAWINGS SHALL BE APPLIED IN ALL CASES WHERE THE FEATURE OCCURS IN THE SYSTEM DESIGN.
- MAJOR EQUIPMENT SHOWN ON THE PLANS AND ELEVATIONS ILLUSTRATE THE GENERAL ARRANGEMENT AND SPACE ALLOCATIONS. THE CONTRACTOR SHALL VERIFY THE SPACE REQUIREMENTS FOR EACH SYSTEM COMPONENT USING MANUFACTURER CERTIFIED SHOP DRAWINGS AND MAKE THE NECESSARY ADJUSTMENTS IN EQUIPMENT PLACEMENT AND CONNECTION IN ORDER TO ACCOMMODATE THE EXACT EQUIPMENT TO BE INSTALLED.
- SUPPORTS, ANCHOR BOLTS, AND HANGERS FOR ALL EQUIPMENT SPECIFIED IN DIVISION 23 SHALL CONFORM TO THE SPECIFICATIONS. MISCELLANEOUS STEEL BRACING SUPPORTS AND REINFORCING STEEL NEEDED TO SUPPORT EQUIPMENT SPECIFIED IN DIVISION 23 SHALL BE PART OF THE SCOPE OF WORK OF DIVISION 23.
- PENETRATIONS THROUGH RATED WALLS AND FLOORS SHALL BE SLEEVED, SEALED AND FIRESAFED TO MAINTAIN THE INTEGRITY OF THE WALL AND FLOOR UL FIRE RESISTANCE RATINGS.
- DUCTWORK AND PIPING 4" AND LARGER ROUTED PARALLEL TO A RATED WALL SHALL BE INSTALLED WITH A MINIMUM 6" CLEARANCE TO ALLOW FOR INSPECTION OF WALL PENETRATIONS.
- CEILING DIFFUSERS, REGISTERS AND GRILLES SHALL BE FURNISHED WITH MOUNTING FRAMES AND FEATURES IN ACCORDANCE WITH THE CEILING TYPE.
- DRAWINGS ARE SCHEMATIC IN NATURE AND SHALL NOT BE SCALED. THE CONTRACTOR IS RESPONSIBLE FOR COORDINATING EXACT ROUTING OF ALL SERVICES WITH EXISTING CONDITIONS AND WITH ALL OTHER TRADES. REFER TO SPECIFICATIONS FOR COORDINATION DRAWING REQUIREMENTS.
- MAINTAIN ACCESSIBILITY OF ALL EQUIPMENT, DAMPERS, CONTROL PANELS, VALVES, AND OTHER DEVICES. PROVIDE ACCESS PANELS AS REQUIRED. COORDINATE PLACEMENT WITH THE ARCHITECT PRIOR TO INSTALLATION.
- CONTRACTOR SHALL COORDINATE WITH THE ARCHITECT PRIOR TO CUTTING ANY OPENING IN THE STRUCTURE.

SHEET INDEX

NUMBER	SHEET NAME
M001	MECHANICAL LEGENDS, NOTES, AND INDEX
M002	MECHANICAL SCHEDULES
M003	MECHANICAL COMCHECK
M111	MECHANICAL PLAN - LEVEL 01
M301	MECHANICAL ENLARGED PLANS

1

2

3

4

5

1

2

3

4

5

PROJECT DESIGN CONDITIONS

ABBREVIATIONS
DB = DRY BULB TEMPERATURE
WB = WET BULB TEMPERATURE
MCOB = MEAN COINCIDENT DRY BULB TEMPERATURE
MCWB = MEAN COINCIDENT WET BULB TEMPERATURE

GENERAL NOTES
(1) BASED ON ASHRAE 2021 HANDBOOK - FUNDAMENTALS
(2) DESIGN WINTER OUTDOOR AIR TEMPERATURE IS 99.6% VALUE MINUS 10 DEG F.

WEATHER STATION (1)	LATTITUDE	LONGITUDE	ELEVATION (FT.)	COOLING			EVAPORATION		HEATING	
				HOTTEST MONTH	DB (°F)	MCWB (°F)	WB (°F)	MCOB (°F)	COLDEST MONTH	DB (°F)
MYRTLE BEACH, SC, USA	33.683N	78.933W	25	JULY	91	77.7	81.1	87	JANUARY	13.9

SPLIT SYSTEM A/C UNIT SCHEDULE

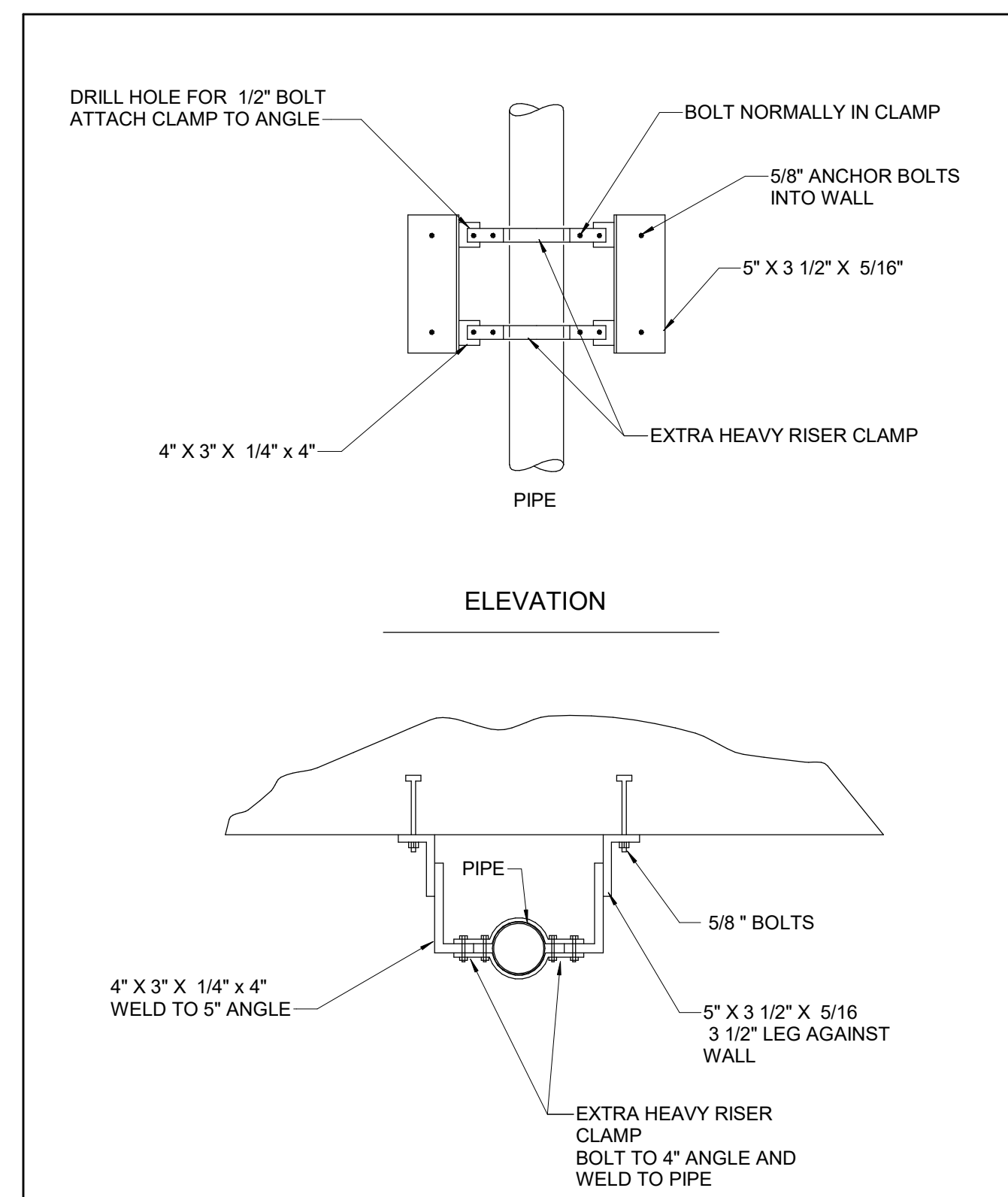
GENERAL NOTES:
1. SEE SPECIFICATIONS.
2. PIPE CONNECTIONS TYPES PER PLANS.
3. CONTROL SEQUENCE PER MANUFACTURER.
4. INDOOR UNIT TO BE POWERED FROM CONDENSING UNIT.
5. SEE ELECTRICAL DRAWINGS FOR STARTER, DISCONNECT AND LOCATION.
6. REFRIGERANT LINE SIZES PER MANUFACTURER'S REQUIREMENTS.
7. COOLING EFFICIENCY (SEER OR SEER2) FOR UNITS < 65 MBH IS AT STANDARD RATING CONDITIONS PER AHRI 210/240. PERFORMANCE DATA SHALL BE SUBMITTED AT BOTH DESIGN AND AHRI STANDARD RATING CONDITIONS.

REMARKS:
A. EMERGENCY POWER
B. PROGRAMMABLE LCD THERMOSTAT
C. WASHABLE SCREEN FILTER
D. INTEGRAL CONDENSATE PUMP POWERED OFF OF UNIT.
E. MANUFACTURER'S WALL MOUNT BRACKET FOR CONDENSER INSTALLATION.

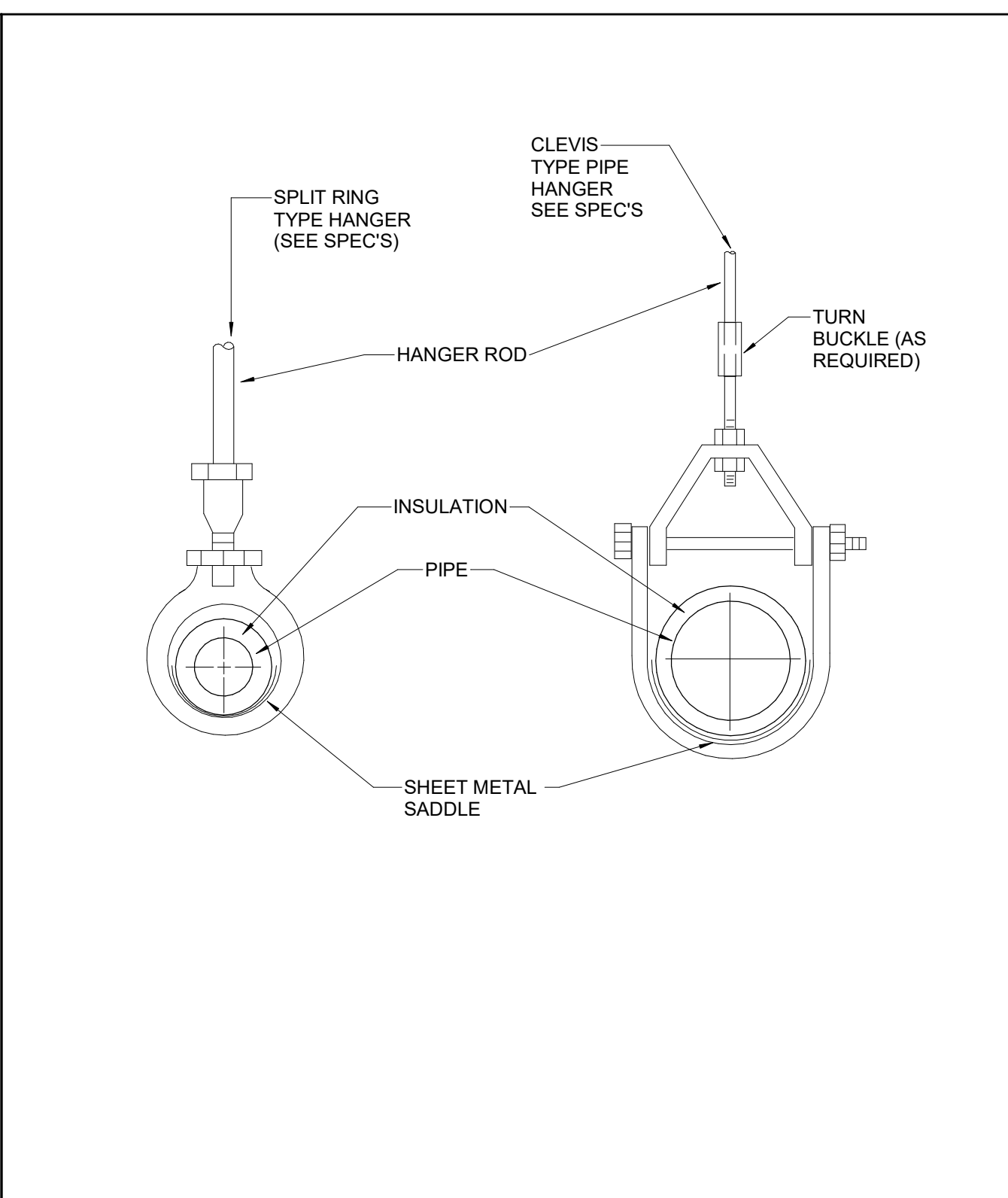
DESIGNATION	MANUFACTURER	MODEL NO.		SEER2	TYPE	CFM	INDOOR UNIT				CONDENSING UNIT				REMARKS				
		INDOOR UNIT	CONDENSING UNIT				COOLING		HEATING		DESIGN AMBIENT		REFRIG.						
SSAC-1-1	DAIKIN	FTXM24WVJU9	RXM24WVJU9	22.7	WALL	845	EDB/EWB (°F)	LDB/LWB (°F)	SENSIBLE CAPACITY (BTUH)	TOTAL CAPACITY (BTUH)	CAPACITY (BTUH)	EAT DB (°F)	LAT DB (°F)	DESIGN AMBIENT	VOLT/PH	MCA	MOP	REFRIG.	B,C,D,E
SSAC-1-2	DAIKIN	FTXM24WVJU9	RXM24WVJU9	22.7	WALL	845	80/67	62.6/59.4	16,200	21,000	24,000	70	96.2	95	208/1	19.8	20	R-32	B,C,D,E
SSAC-1-3	DAIKIN	FTXM24WVJU9	RXM24WVJU9	22.7	WALL	845	80/67	62.6/59.4	16,200	21,000	24,000	70	96.2	95	208/1	19.8	20	R-32	B,C,D,E

REVISIONS

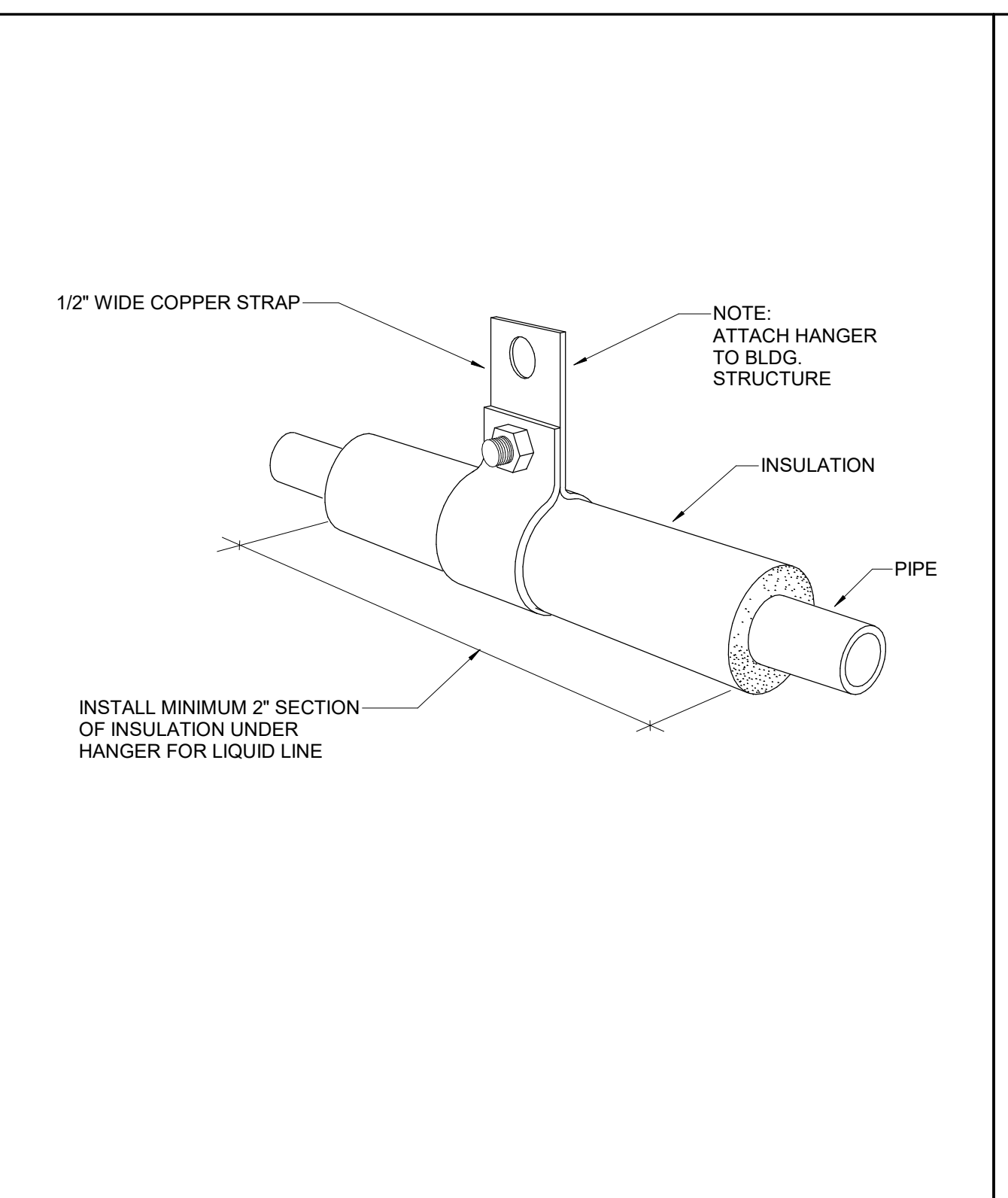
NO	DATE	DESCRIPTION
A	08.29.2025	ISSUED FOR PRICING AND PERMITTING



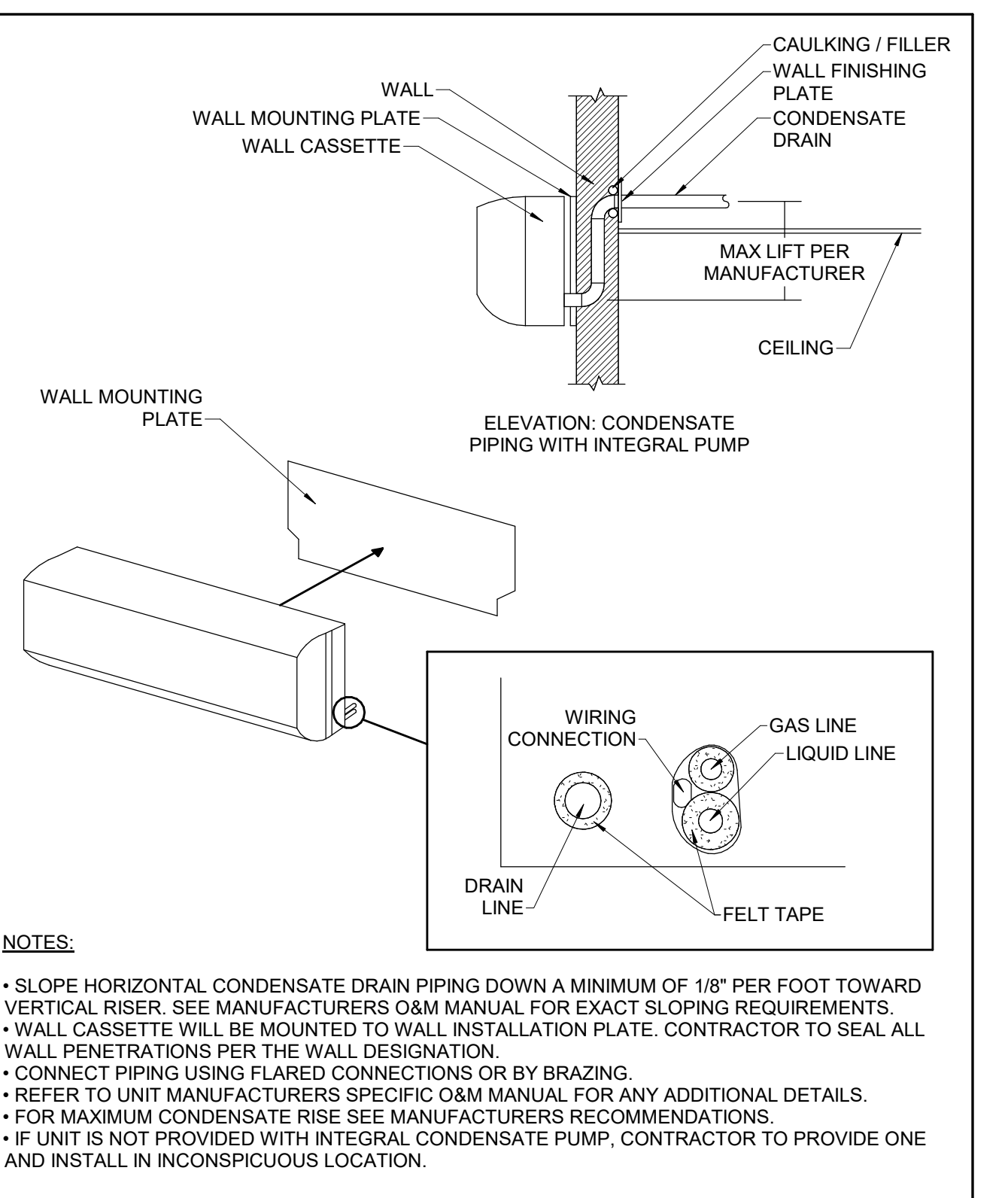
PIPE SUPPORT TO VERTICAL WALL 4



PIPE HANGER SUPPORTS 3



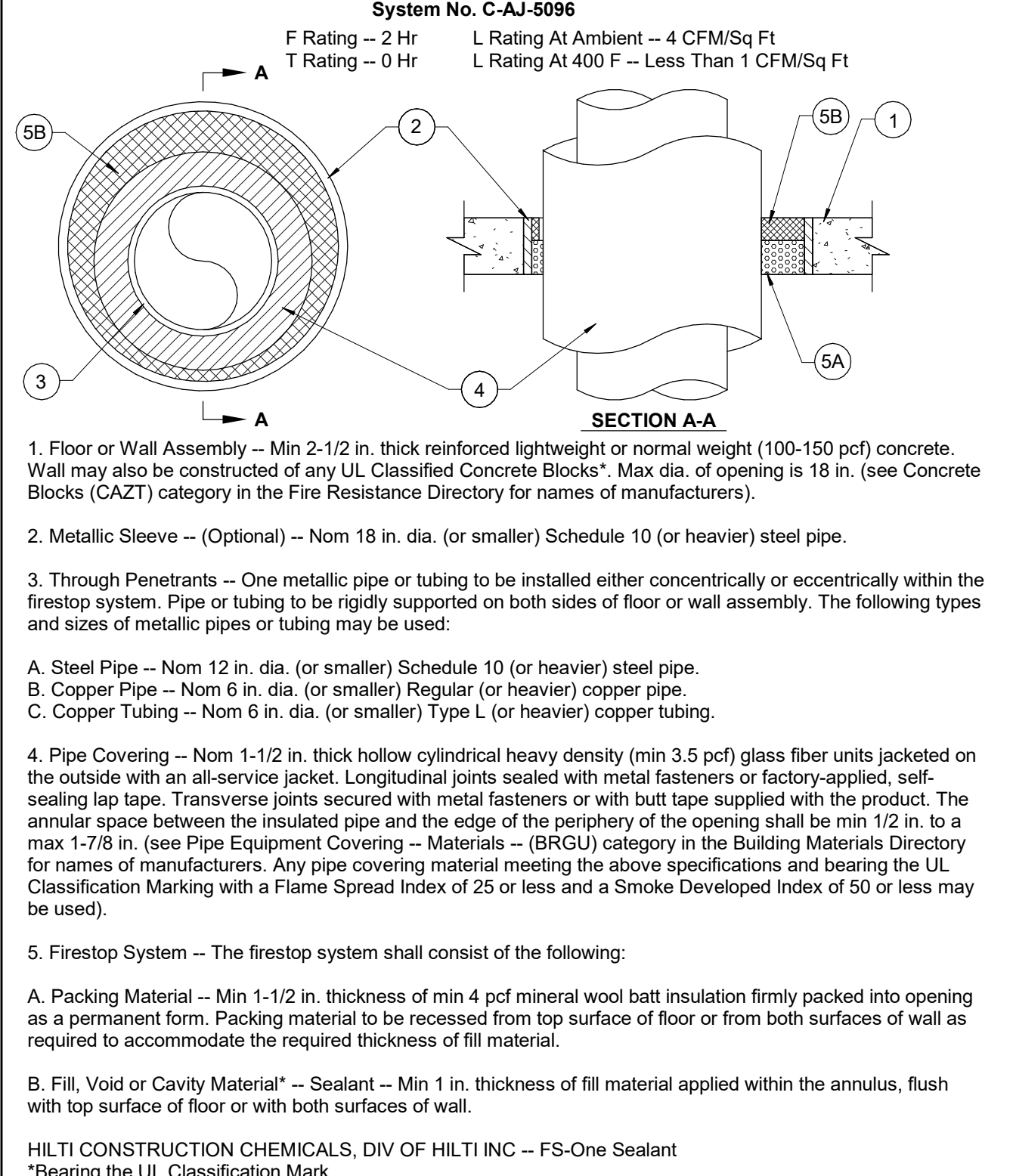
REFRIGERANT PIPING HANGER 2



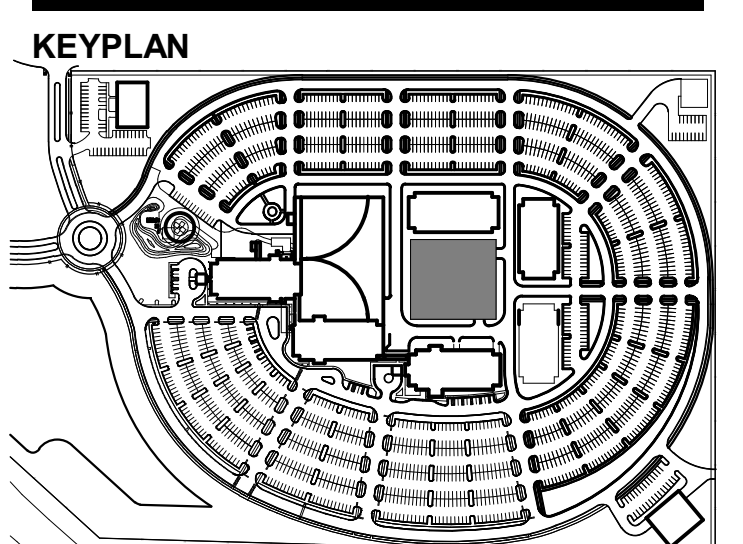
REFRIGERANT WALL CASSETTE DETAIL 1



INSULATED METAL PIPE THROUGH CONCRETE FLOOR/WALL 6



METAL PIPE THROUGH 1-HR, OR 2-HR, CONCRETE WALL ASSEMBLY 5





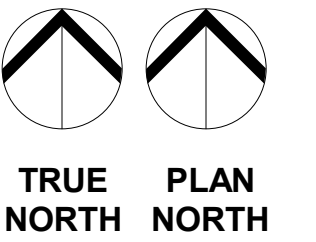
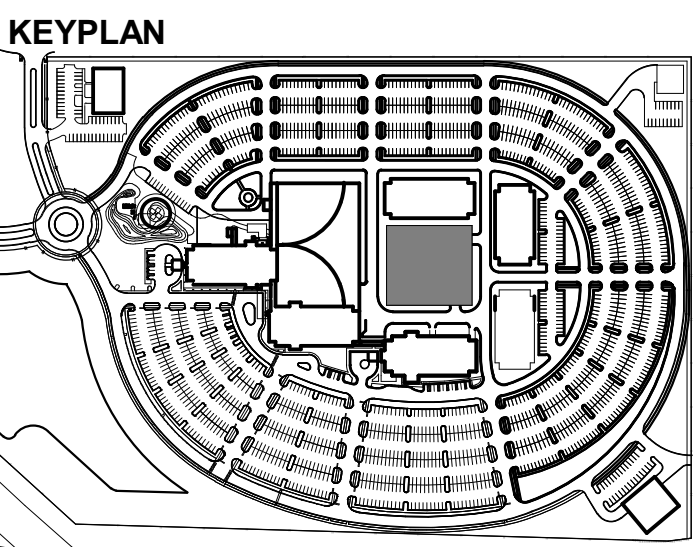
3600 Arco Corporate Drive,
Suite 175
Charlotte, NC 28273
(800) 545-6732
www.ssr-inc.com
SSR Project #: 25720090

REVISIONS

NO	DATE	DESCRIPTION
A	08.29.2025	ISSUED FOR PRICING AND PERMITTING

McLeod Health
The Choice for Medical Excellence.

**CAROLINA FOREST
PARKING DECK**
MYRTLE BEACH, SOUTH CAROLINA



PROJECT NO: 0470.62
DATE: 08.29.2025
COPYRIGHT © 2025 DesignStrategies, LLC

**MECHANICAL
COMCHECK**

M003

1

2

3

4

5



Generated by COMcheck-Web Software
Mechanical Compliance Certificate

Section 1: Project Information

Energy Code: 2009 IECC
Project Title: McLeod Carolina Forest Parking Deck
Project Type: New Construction
Construction Site: _____ Owner/Agent: _____ Designer/Contractor: _____

Section 2: General Information

Building Location (for weather data): Myrtle Beach, South Carolina
Climate Zone: 3a

Section 3: Mechanical Systems List

Quantity	System Type & Description
1	SSAC-1-1 (Single Zone) : Split System Heat Pump Heating Mode Capacity = 24 kBtu/h, Proposed Efficiency = 12.50 HSPF, Required Efficiency = 7.70 HSPF Cooling Mode Capacity = 21 kBtu/h, Proposed Efficiency = 22.00 SEER, Required Efficiency = 13.00 SEER Proposed Part Load Efficiency = 0.00, Required Part Load Efficiency = 0.00
1	SSAC-1-2 (Single Zone) : Split System Heat Pump Heating Mode Capacity = 24 kBtu/h, Proposed Efficiency = 12.50 HSPF, Required Efficiency = 7.70 HSPF Cooling Mode Capacity = 21 kBtu/h, Proposed Efficiency = 22.00 SEER, Required Efficiency = 13.00 SEER Proposed Part Load Efficiency = 0.00, Required Part Load Efficiency = 0.00
1	SSAC-1-3 (Single Zone) : Split System Heat Pump Heating Mode Capacity = 24 kBtu/h, Proposed Efficiency = 12.50 HSPF, Required Efficiency = 7.70 HSPF Cooling Mode Capacity = 21 kBtu/h, Proposed Efficiency = 22.00 SEER, Required Efficiency = 13.00 SEER Proposed Part Load Efficiency = 0.00, Required Part Load Efficiency = 0.00

Section 4: Requirements Checklist

- Requirements Specific To: SSAC-1-1 :**
 1. Equipment minimum efficiency. Heat Pump: 7.70 HSPF 13.00 SEER
- Requirements Specific To: SSAC-1-2 :**
 1. Equipment minimum efficiency. Heat Pump: 7.70 HSPF 13.00 SEER
- Requirements Specific To: SSAC-1-3 :**
 1. Equipment minimum efficiency. Heat Pump: 7.70 HSPF 13.00 SEER
- Generic Requirements: Must be met by all systems to which the requirement is applicable:**
 1. Plant equipment and system capacity no greater than needed to meet loads
 Exception(s):
 Standby equipment automatically off when primary system is operating
 Multiple units controlled to sequence operation as a function of load
 2. Minimum one temperature control device per system

Project Title: McLeod Carolina Forest Parking Deck Report date: 08/29/25
Data filename: _____ Page 1 of 3

- 3. Minimum one humidity control device per installed humidification/dehumidification system
- 4. Load calculations per ASHRAE/ACCA Standard 163.
- 5. Automatic Controls: Setback to 35°F (heat) and 85°F (cool), 7-day clock, 2-hour occupant override, 10-hour backup
Exception(s):
 Continuously operating zones
- 6. Outside-air source for ventilation: system capable of reducing OSA to required minimum
- 7. R-8 supply and return air duct insulation in unconditioned spaces
R-8 supply and return air duct insulation outside the building
R-8 insulation between ducts and the building exterior when ducts are part of a building assembly
Exception(s):
 Ducts located within equipment
 Ducts with interior and exterior temperature difference not exceeding 15°F
- 8. Mechanical fasteners and sealants used to connect ducts and air distribution equipment
- 9. Ducts sealed - longitudinal seams on rigid ducts; transverse seams on all ducts. UL 181A or 181B tapes and mastics
- 10. Hot water pipe insulation: 1.5 in. for pipes <= 1.5 in. and 2 in. for pipes > 1.5 in.
Chilled water/refrigerant/brine pipe insulation: 1.5 in. for pipes <= 1.5 in. and 1.5 in. for pipes > 1.5 in.
Steam pipe insulation: 1.5 in. for pipes <= 1.5 in. and 3 in. for pipes > 1.5 in.
Exception(s):
 Piping within HVAC equipment.
 Fluid temperatures between 55 and 105°F.
 Fluid not heated or cooled with renewable energy.
- Runouts < 4 ft in length.
- Piping within room fan-coil (with AHR140 rating) and unit ventilators (with AHR1640 rating).
- 11. Operation and maintenance manual provided to building owner
- 12. Thermostatic controls have 5°F deadband
Exception(s):
 Thermostats requiring manual changeover between heating and cooling
 Special occupancy or special applications where wide temperature ranges are not acceptable and are approved by the authority having jurisdiction.
- 13. Balancing devices provided in accordance with IMC 603.17
- 14. Demand control ventilation (DCV) present for high design occupancy areas (>40 person/1000 ft2 in spaces >500 ft2) and served by systems with any one of 1) an air-side economizer, 2) automatic modulating control of the outdoor air damper, or 3) a design outdoor airflow greater than 3000 cfm.
Exception(s):
 Systems with heat recovery.
 Multiple-zone systems without DDC of individual zones communicating with a central control panel.
 Systems with a design outdoor airflow less than 1200 cfm.
 Spaces where the supply airflow rate minus any makeup or outgoing transfer air requirement is less than 1200 cfm.
- 15. Motorized, automatic shutoff dampers required on exhaust and outdoor air supply openings
Exception(s):
 Gravity dampers acceptable in buildings < 3 stories
- 16. Automatic controls for freeze protection systems present
- 17. Exhaust air heat recovery included for systems 5,000 cfm or greater with more than 70% outside air fraction or specifically exempted
Exception(s):
 Hazardous exhaust systems, commercial kitchen and clothes dryer exhaust systems that the International Mechanical Code prohibits the use of energy recovery systems.
 Systems serving spaces that are heated and not cooled to less than 60°F.
 Where more than 60 percent of the outdoor heating energy is provided from site-recovered or site solar energy.
 Heating systems in climates with less than 3600 HDD.
 Cooling systems in climates with a 1 percent cooling design wet-bulb temperature less than 64°F.
 Systems requiring dehumidification that employ energy recovery in series with the cooling coil.
 Laboratory fume hood exhaust systems that have either a variable air volume system capable of reducing exhaust and makeup air volume to 50 percent or less of design values or, a separate make up air supply meeting the following makeup air requirements:
 a) at least 10 percent of exhaust flow rate; b) heated to no more than 2°F below room setpoint temperature; c) cooled to no lower than 3°F above room setpoint temperature; d) no humidification added; e) no simultaneous heating and cooling.

Section 5: Compliance Statement

Project Title: McLeod Carolina Forest Parking Deck Report date: 08/29/25
Data filename: _____ Page 2 of 3

Compliance Statement: The proposed mechanical design represented in this document is consistent with the building plans, specifications and other calculations submitted with this permit application. The proposed mechanical systems have been designed to meet the 2009 IECC requirements in COMcheck-Web and to comply with the mandatory requirements in the Requirements Checklist.

SYDNEY FLYNN - EIT
Name - Title Signature *Sydney Flynn* Date 8/29/2025

Section 6: Post Construction Compliance Statement

- HVAC record drawings of the actual installation, system capacities, calibration information, and performance data for each equipment provided to the owner.
 - HVAC O&M documents for all mechanical equipment and system provided to the owner by the mechanical contractor.
 - Written HVAC balancing and operations report provided to the owner.
- The above post construction requirements have been completed.

Principal Mechanical Designer-Name _____ Signature _____ Date _____

Project Title: McLeod Carolina Forest Parking Deck Report date: 08/29/25
Data filename: _____ Page 3 of 3

1

2

3

4

5

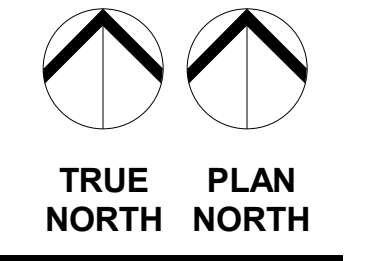
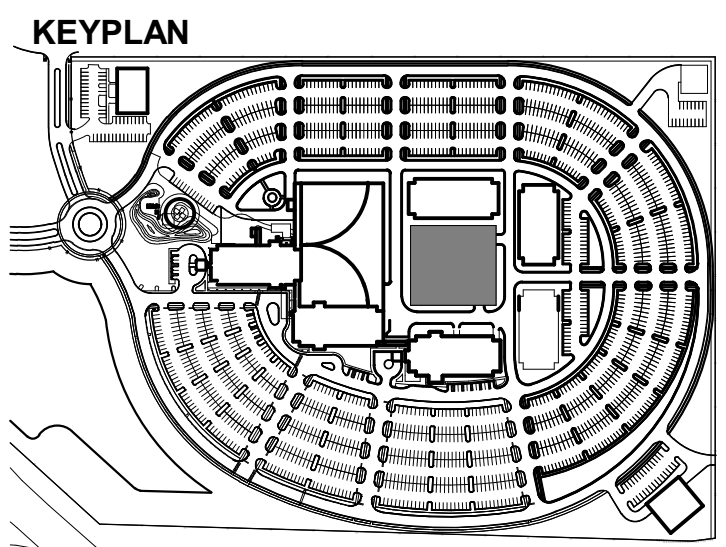


REVISIONS

NO	DATE	DESCRIPTION
A	08.29.2025	ISSUED FOR PRICING AND PERMITTING



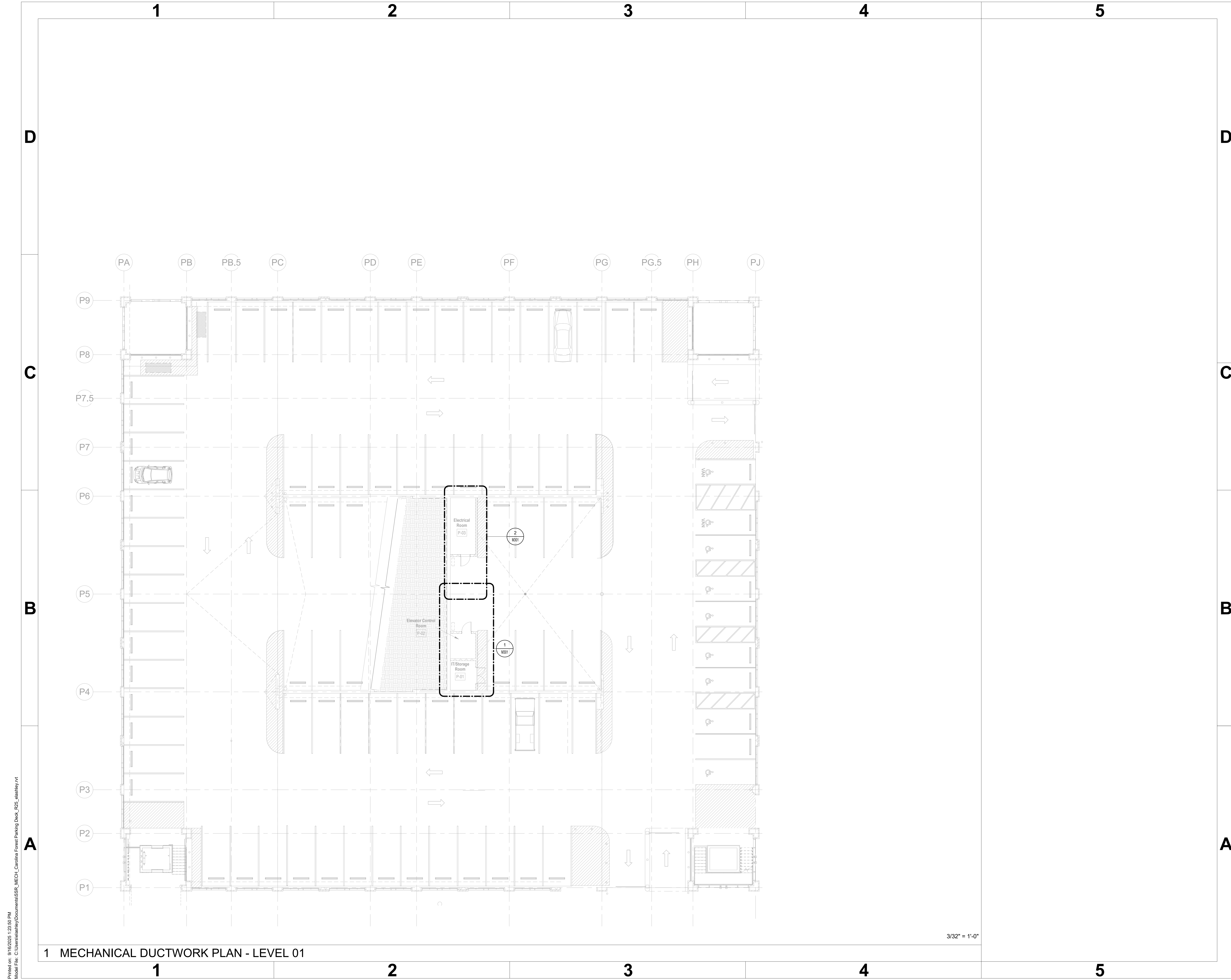
**CAROLINA FOREST
PARKING DECK**
MYRTLE BEACH, SOUTH CAROLINA



PROJECT NO: 0470.62
DATE: 08.29.2025
COPYRIGHT © 2025 DesignStrategies, LLC

**MECHANICAL
PLAN – LEVEL
01**

M111



1 MECHANICAL DUCTWORK PLAN - LEVEL 01

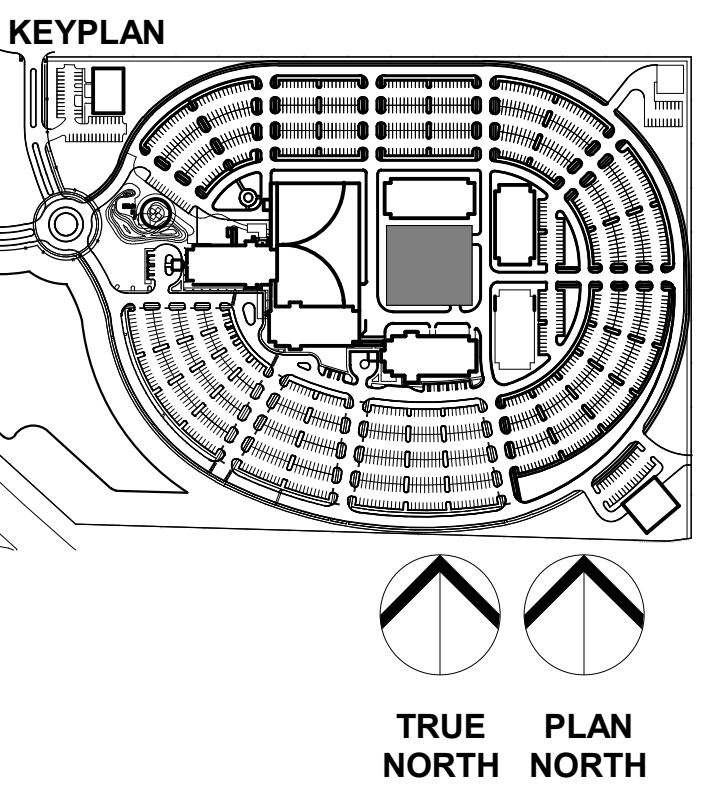
3/32" = 1'-0"

Printed on: 08/29/2025 1:25:50 PM
Model File: C:\Users\ashley\Documents\SSR_Carolina Forest Parking Deck_R02_ashley.rvt



REVISIONS

NO	DATE	DESCRIPTION
A	08.29.2025	ISSUED FOR PRICING AND PERMITTING



1

2

3

4

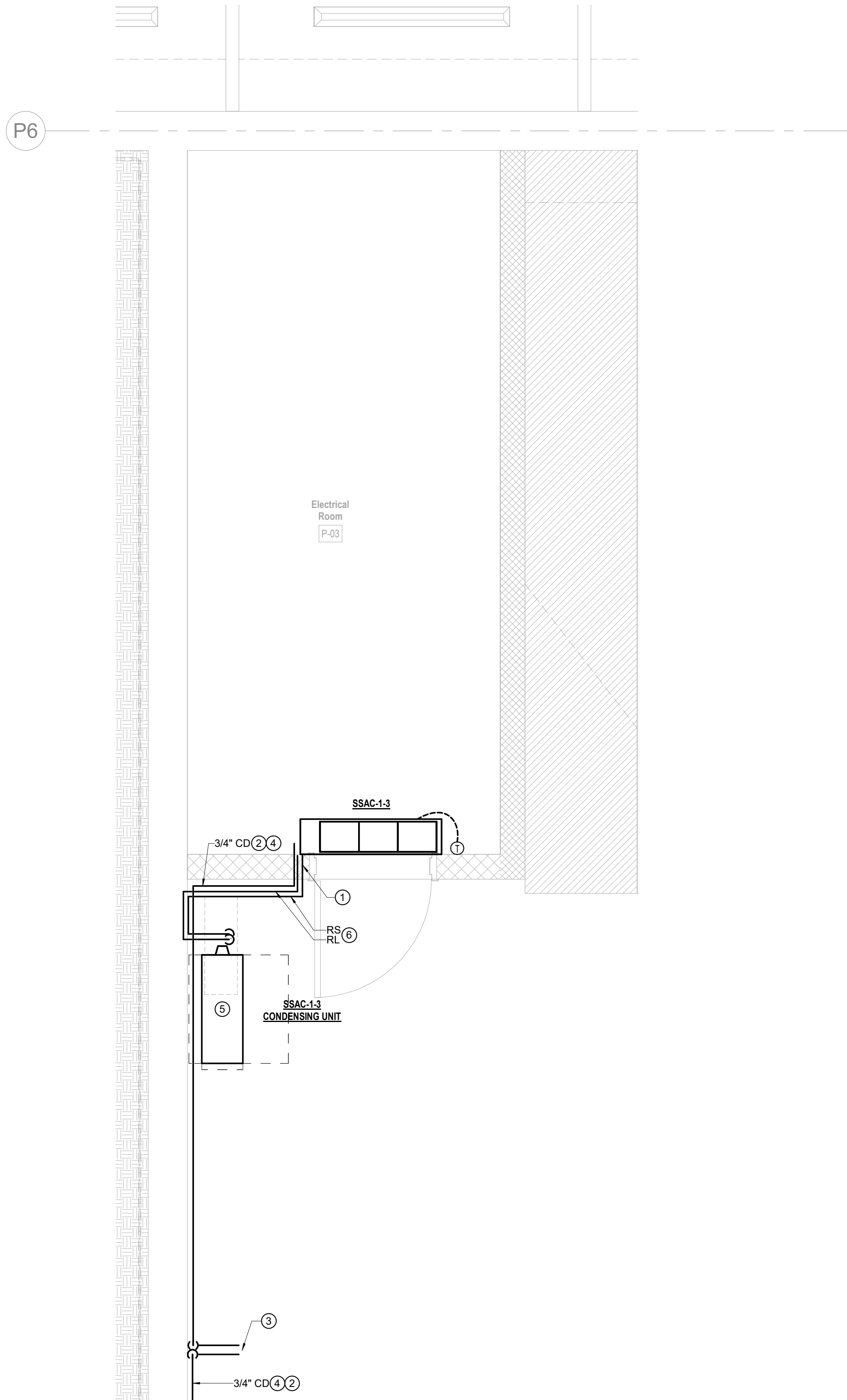
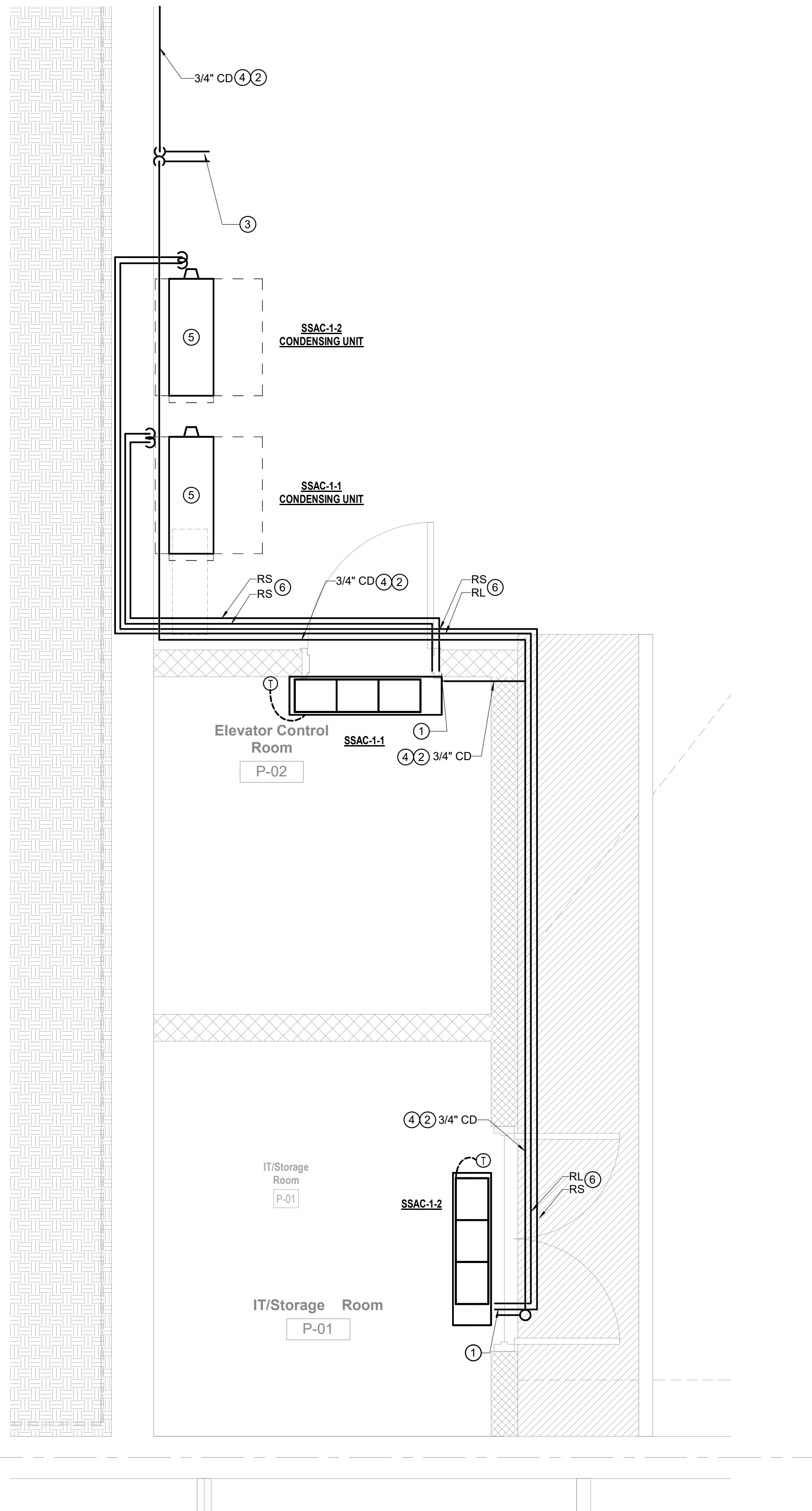
5

SHEET GENERAL NOTES

- A. ROUTE ALL REFRIGERANT AND CONDENSATE PIPING TIGHT TO STRUCTURE OR WALL. SLOPE AS REQUIRED.

SHEET KEYED NOTES

1. COPPER CONDENSATE LINE AND LINE SET THROUGH WALL. FIELD COORDINATE LINE SET ROUTING.
2. ROUTE COPPER CONDENSATE LINE WITH 1/8" FT. SLOPE IN DIRECTION OF FLOW.
3. CONDENSATE DRAIN DOWN TO FLOOR DRAIN. REFER TO PLUMBING FOR FLOOR DRAIN LOCATION.
4. INSULATE CONDENSATE LINE WITH 1" ARMAFLEX ARMACELL AP OR EQUIVALENT INSULATION. APPLY 2 LAYERS MINIMUM OF MANUFACTURER'S RECOMMENDED WEATHER SEALANT.
5. MOUNT CONDENSING UNIT ON WALL MINIMUM 3' ABOVE FINISHED FLOOR USING MANUFACTURER'S WALL BRACKET.
6. PROVIDE REFRIGERANT LINE SET PIPING AND SIZE PER MANUFACTURER'S RECOMMENDATIONS BASED ON CAPACITY AND LENGTH OF PIPE RUN. COVER EXTERIOR LINE SET WITH ALUMINUM JACKETING. REFER TO SPEC 23 07 00 FOR DETAILS.



1/2" = 1'-0"

1/2" = 1'-0"

1 MECHANICAL PLAN - LEVEL 01 - ELEVATOR ROOM

2 MECHANICAL DUCTWORK PLAN - LEVEL 01 - ELECTRICAL ROOM

1

2

3

4

5