



**Craven
Community
College-
Public Safety
Training
Center**

525 Executive Pkwy
New Bern, NC 28562

BID DOCUMENTS
SCO # 24-27879-01A

Revisions	
No.	Date

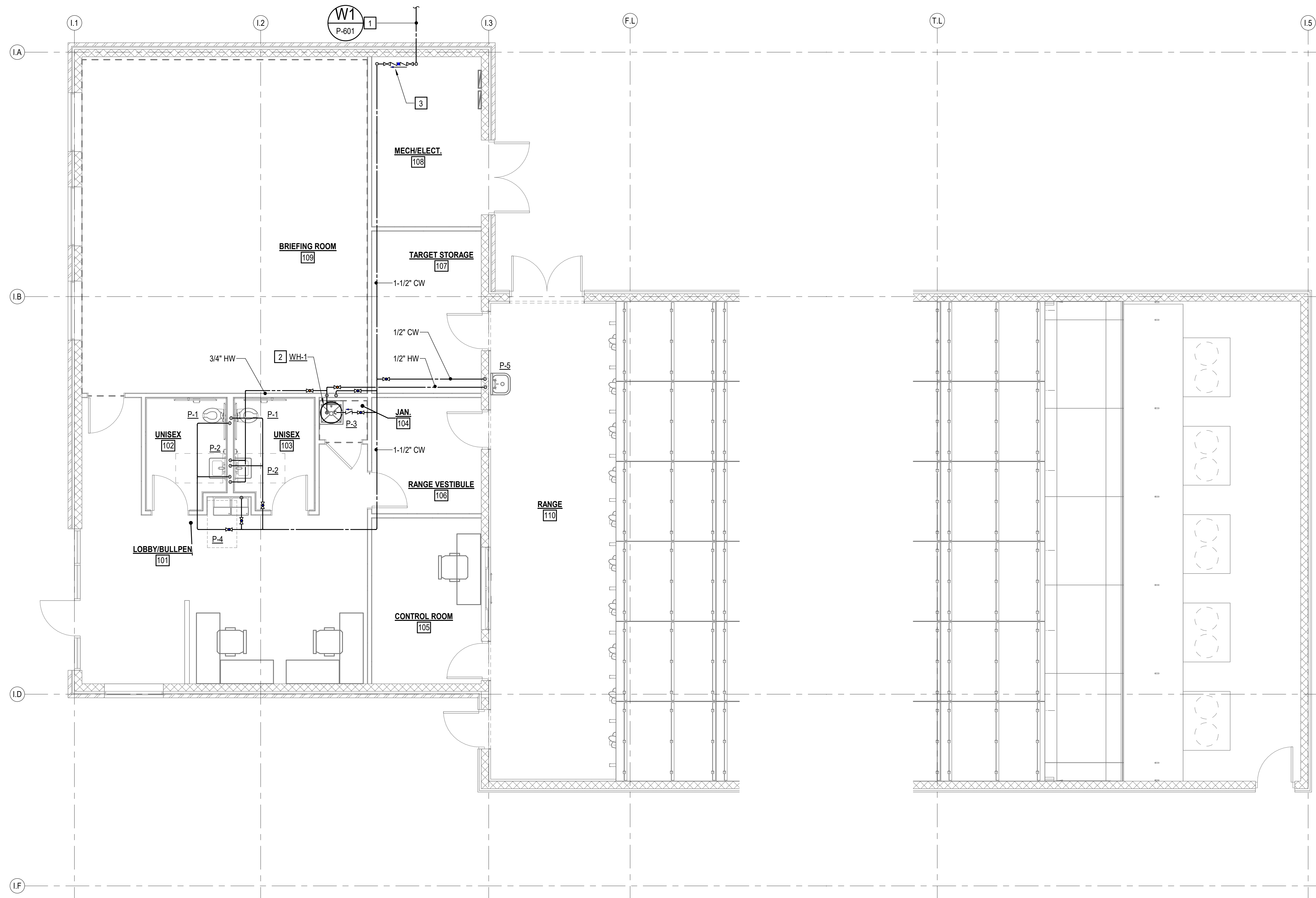
Project Number 2407.SAFE	Date 07/28/25
Drawn Author	Checked WAR
Scale AS NOTED	
Drawing Title	

**INDOOR RANGE
DOMESTIC WATER
PLAN**

Sheet Number
Or 157

Drawing Number

P-101



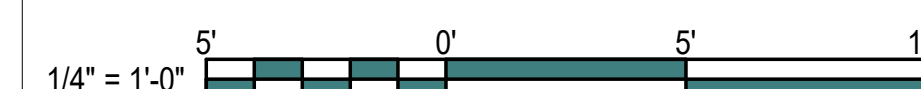
INDOOR RANGE DOMESTIC WATER PLAN
SCALE: 1/4" = 1'-0"

BID ALTERNATE NOTE:
REFER TO GI001 FOR BID ALTERNATE INFORMATION.

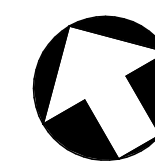
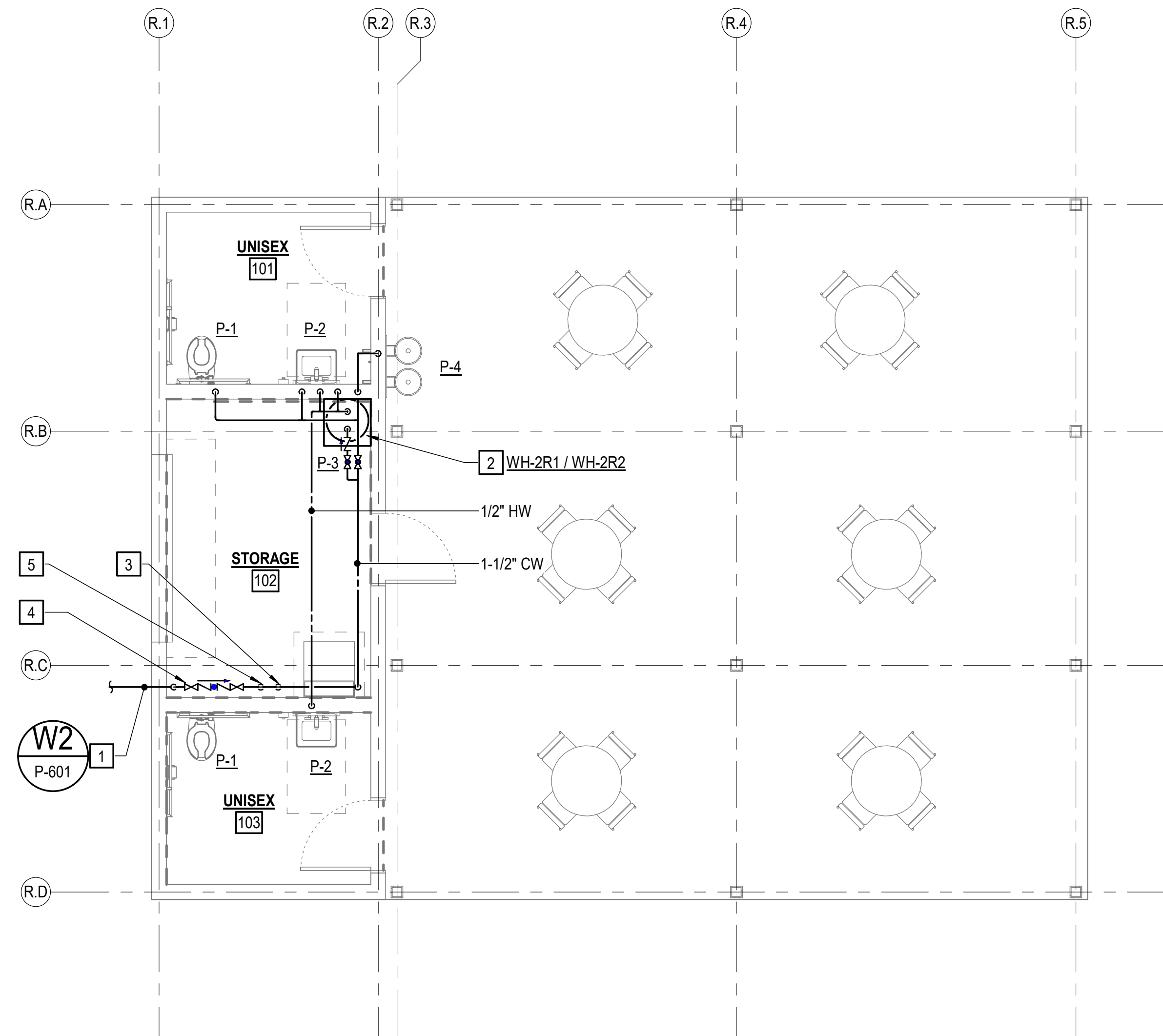
NOTES THIS SHEET

- 1-1/2" CW SERVICE, SEE CIVIL DRAWINGS FOR CONTINUATION.
- PROVIDE WALL MOUNTED WATER HEATER AT 5'-0" AFF MINIMUM. SEE DETAIL ON SHEET P-501.
- PROVIDE 1-1/2" RBPB AT INDICATED LOCATION; SEE BACKFLOW PREVENTER INSTALLATION AND DISCHARGE DETAILS ON SHEET P-501.

GRAPHIC SCALE(S)



- 1 1-1/2" CW SERVICE, SEE CIVIL DRAWINGS FOR CONTINUATION.
- 2 PROVIDE WALL MOUNTED WATER HEATER AT 5'-0" AFF MINIMUM. SEE DETAIL ON SHEET P-501.
- 3 ROUTE 1/2" CW DOWN TO ICE MAKER, SEE DETAIL ON SHEET P-501.
- 4 PROVIDE 1-1/2" RPBP AT INDICATED LOCATION; SEE BACKFLOW PREVENTER INSTALLATION AND DISCHARGE DETAILS ON SHEET P-501.
- 5 PROVIDE 1-1/2" CW SUPPLY WITH ISOLATION VALVE TO SERVE ADJACENT BATHROOM GROUP. SEE RISER DIAGRAM



SCALE: 1/4" = 1'-0"

REFER TO GI001 FOR BID ALTERNATE INFORMATION.



A circular professional seal for Timothy N. Hahn, a North Carolina Engineer. The seal features the text "NORTH CAROLINA" at the top, "PROFESSIONAL SEAL" in the center, and "ENGINEER" at the bottom. The number "058819" and the date "01/25/13" are also present. The seal is surrounded by a decorative border.

**525 Executive Pkwy
New Bern, NC 28562**

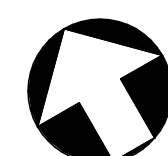
SCO # 24-27879-01A

[illegible]

REHAB SHELTER DOMESTIC WATER PLAN

Drawing Number

P-102

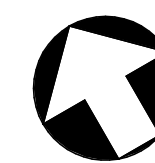
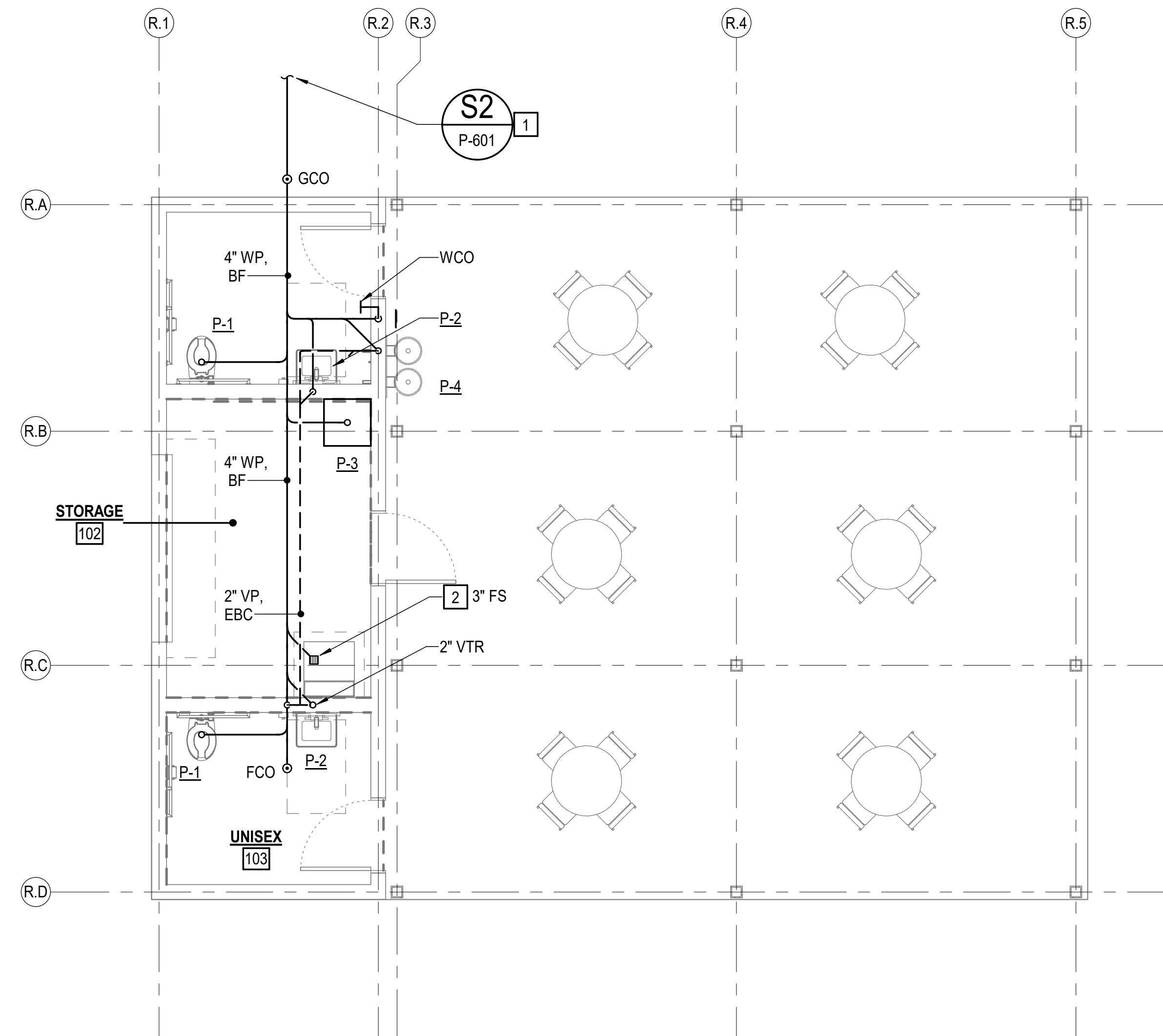


P-201



1 4" WP, INV ELEV = 2.00 BFF; SEE CIVIL DRAWINGS FOR CONTINUATION.

2 ROUTE DRAIN FROM ICE MAKER TO ADJACENT FLOOR SINK.



SCALE: 1/4" = 1'-0"

REFER TO GI001 FOR BID ALTERNATE INFORMATION.

1/4" = 1'-0"

5' 0' 5' 10'



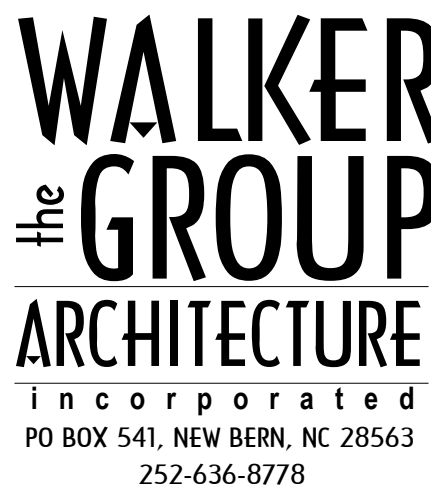
A circular professional engineer seal for the State of North Carolina. The outer ring contains the text "NORTH CAROLINA" at the top and "TIMOTHY N. HAHN" at the bottom, separated by small vertical lines. Inside this ring is a dashed circle. Within the dashed circle, the text "PROFESSIONAL" is at the top, "SEAL" is in the center, and "ENGINEER" is at the bottom. Below "SEAL" is the license number "058819" and below "ENGINEER" is the expiration date "04/28/2025".

**525 Executive Pkwy
New Bern, NC 28562**

[illegible]

Drawing Number

P-202



**CRAVEN
COMMUNITY
COLLEGE-
PUBLIC SAFETY
TRAINING
CENTER**

**525 Executive Pkwy
New Bern, NC 28562**

BID DOCUMENTS
SCO # 24-27879-01A

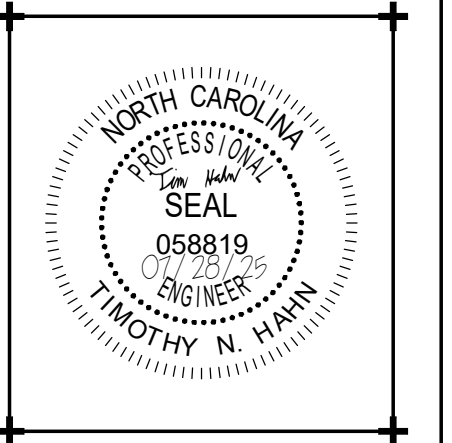
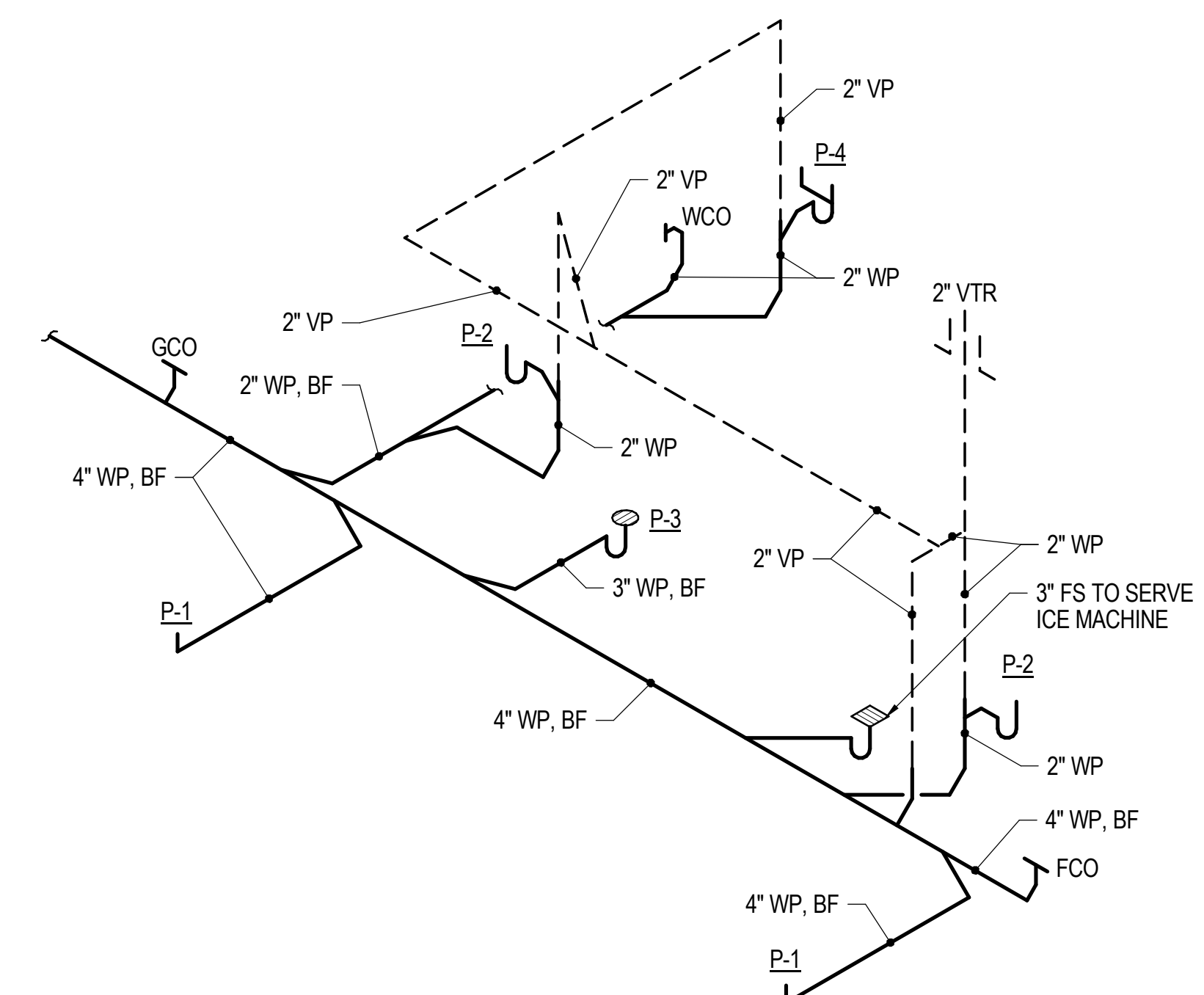
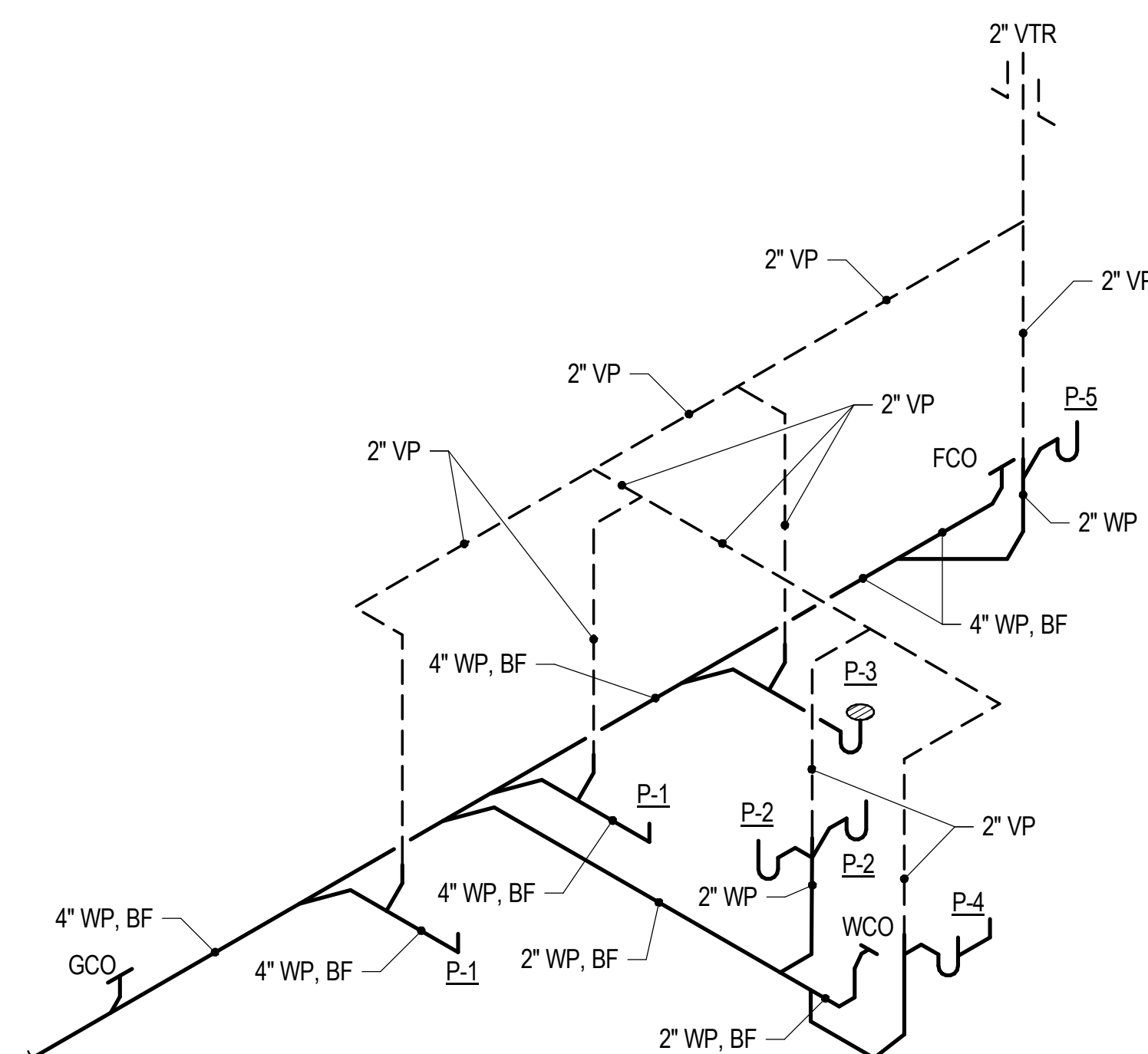
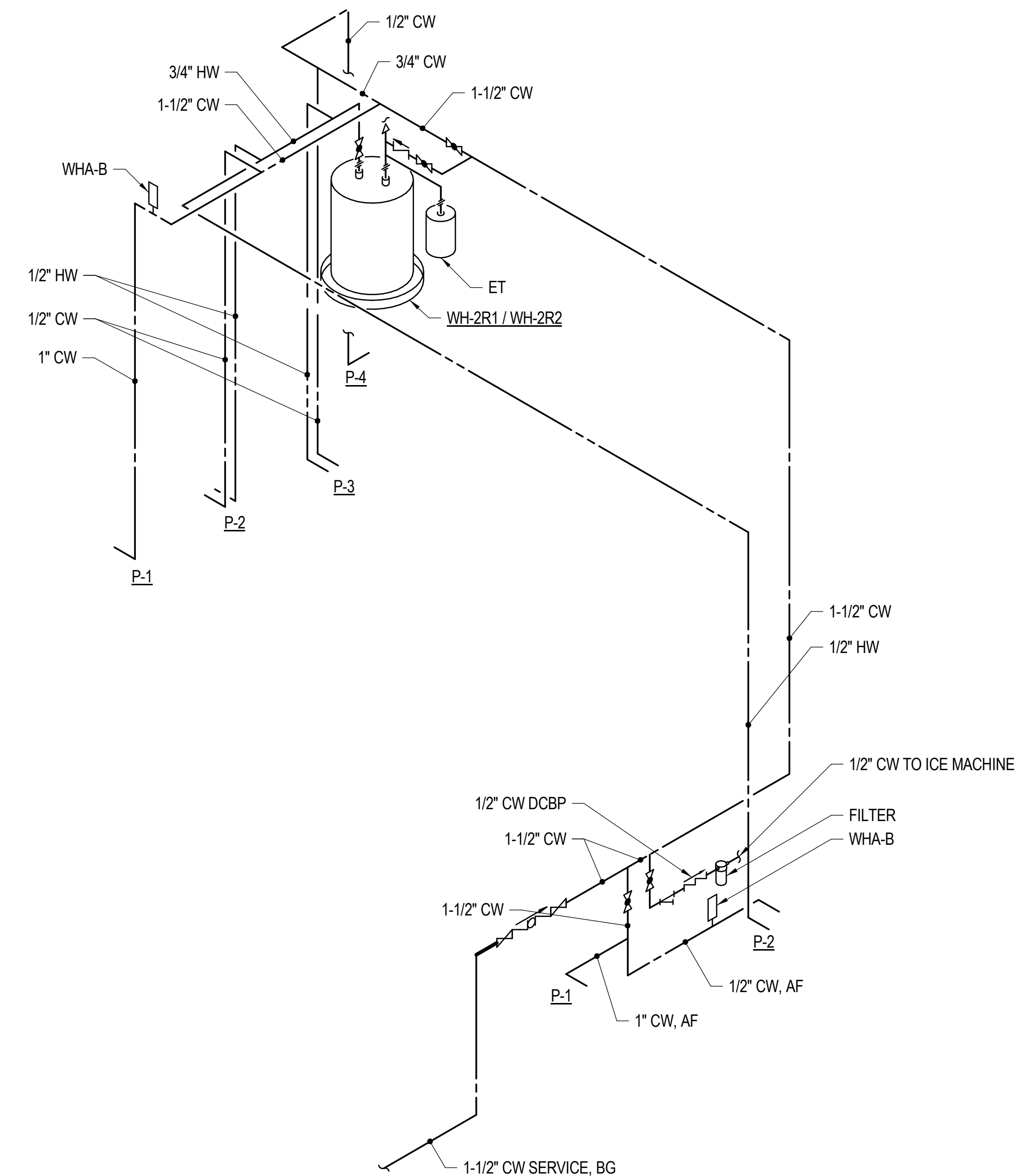
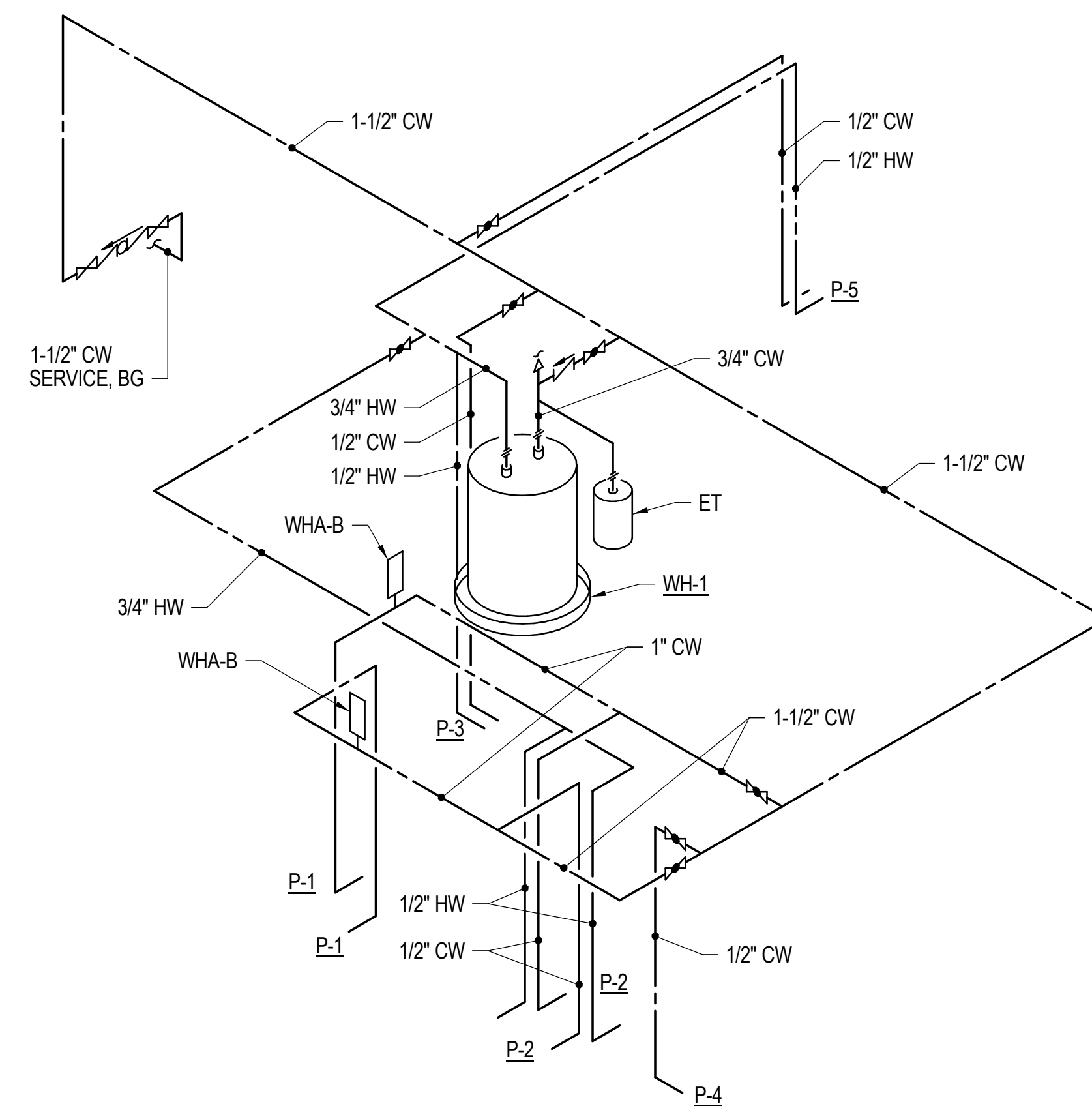
[illegible]

Project Number	Date
2407.SAFE	07/28/25
Drawn	Checked
ADB	WAR
Scale	
AS NOTED	
Drawing Title	

DETAILS

Sheet Number
Of 157
Drawing Number

P-501



**CRAVEN
COMMUNITY
COLLEGE-
PUBLIC SAFETY
TRAINING
CENTER**

**525 Executive Pkwy
New Bern, NC 28562**

BID DOCUMENTS
SCO # 24-27879-01A

[illegible]

Project Number	Date
2407.SAFE	07/28/25
Drawn	Checked
Author	WAR
Scale	
AS NOTED	
Drawing Title	

Sheet Number
Of 157

Drawing Number

P-601