

06/12/2025

Quackenbush Architects + Planners
1217 Hampton Street
Columbia, South Carolina 29201

June 12, 2025

ADDENDUM NO. 4

The following items shall take precedence over the drawings and specifications for the above named project and shall become a part of the contract documents. Where any item called for in the specifications, or indicated on the drawings, is not supplemented hereby, the original requirements shall remain in effect. Where any original item is amended, voided or superseded hereby, the provisions of such item not specifically amended, voided or superseded shall remain in effect.

ATTACHMENTS

Documents:

1. Drawings: L105, S-200, S-302
2. Specification Sections: None

GENERAL

1. Bidders are hereby advised that information from bid documents which are not received from the sources listed in the Invitation for Bids is not legitimate and the bidder accepts full responsibility for any differences. Quackenbush Architects + Planners has not authorized the scanning of their documents. Bidders should be aware that the plans are copyrighted and any unlawful use is subject to legal action. Bidders are further advised that the purchase and/or use of partial bid documents is not recommended and bidder will be responsible for any discrepancies which might have been avoided had a full set of documents been reviewed.
2. Listing of multiple products or manufacturers within specifications or approval of products or manufacturers via substitution request does not waive or preclude any and all performance, warranty or specific requirements listed within the specification unless specifically noted in the Addendum. Only manufacturers and products meeting the specification requirements and listed in the specifications or included in the Addendum shall be approved for the project.

DRAWINGS

<u>Item No.</u>	<u>Description</u>
------------------------	---------------------------

- | | |
|-----|---|
| 4-1 | Sheet L105 – ADD ALTERNATE #1 PATIO LANDSCAPE PLAN (Drawings reissued): <ol style="list-style-type: none">a) Plant list revised showing only the landscape quantities related to the add alternate. |
|-----|---|

- 4-2 Sheet S-200 – FOUNDATION PLAN (Drawings reissued):
 - a) Drawing reissued to clarify the mechanical pads.
- 4-3 Sheet S-302 – DETAILS (Drawings reissued):
 - a) Drawing reissued to include typical mechanical pad detail
- 4-4 Sheet E-201 – ELECTRICAL LIGHTING PLAN – FIRST FLOOR (Drawings not reissued):
 - a) Provide a combination occupancy and daylight sensor in the device in Lobby L100.
- 4-5 Sheet E-202 – ELECTRICAL LIGHTING PLAN – SECOND FLOOR (Drawings not reissued):
 - a) Provide a combination occupancy and daylight sensor in the device in Lobby L200.
- 4-6 Sheet E-600 – ELECTRICAL LIGHTING FIXTURE SCHEDULE (Drawings not reissued):
 - a) The following are approved equals:
 - a. Type P1 – 3D printed pendant by Cooper Prentalux
 - b. Type P2 – 72" Pendant by Zaneen Architectural
 - c. Type PL – Amerlux D241-7P Series
 - d. Type PL pole – black finish round tapered aluminum pole, 4" diameter tapered to 3" at the top to match campus standard

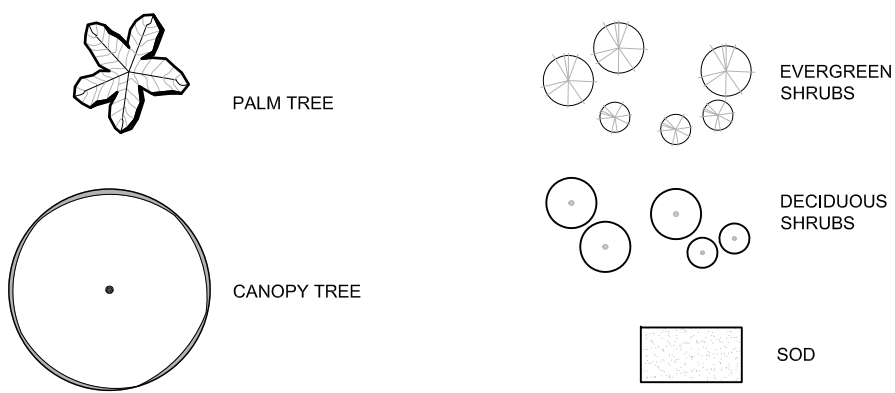
SPECIFICATIONS

<u>Item No.</u>	<u>Description</u>
------------------------	---------------------------

- | | |
|-----|---|
| 4-7 | <u>262416 – PANELBOARDS (Spec not reissued):</u> <ul style="list-style-type: none">a) Section 2.2 Paragraph A, includes Siemens as an approved manufacturer |
| 4-8 | <u>262816 – ENCLOSED SWITCHES AND CIRCUIT BREAKERS (Spec not reissued):</u> <ul style="list-style-type: none">a) Section 2.1 Paragraph A, include Siemens as an approved manufacturer |
| 4-9 | <u>262913 – MANUAL AND MAGNETIC MOTOR CONTROLLERS (Spec not reissued):</u> <ul style="list-style-type: none">a) Multiple paragraphs include Siemens as an approved manufacturer |

END OF ADDENDUM NO. 4

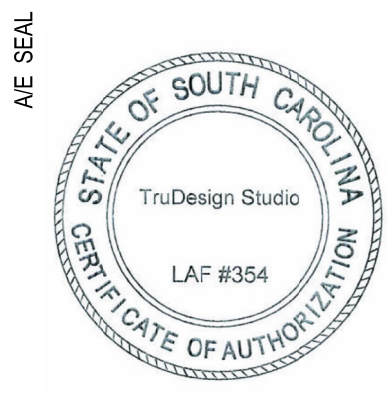
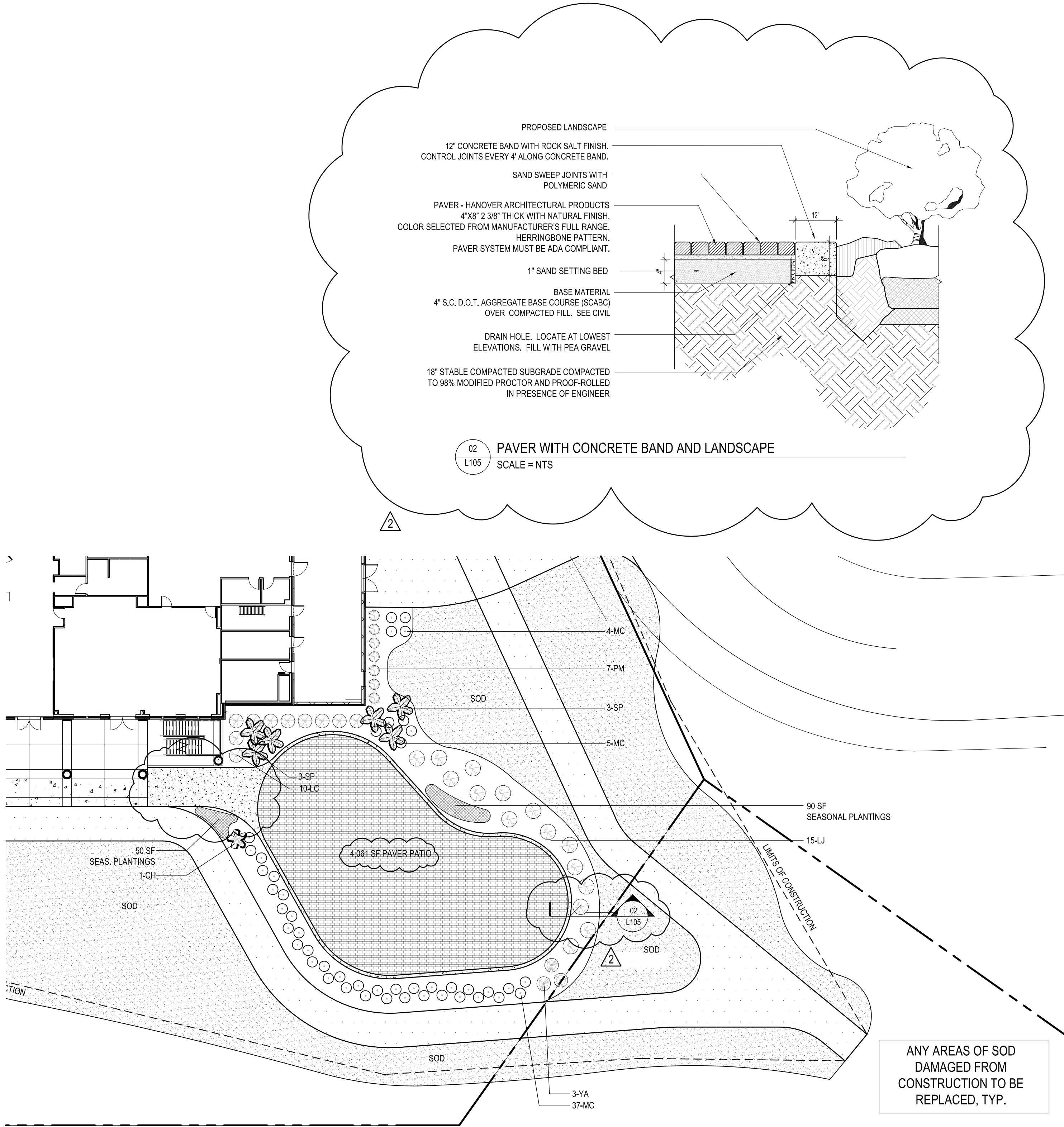
LANDSCAPE LEGEND

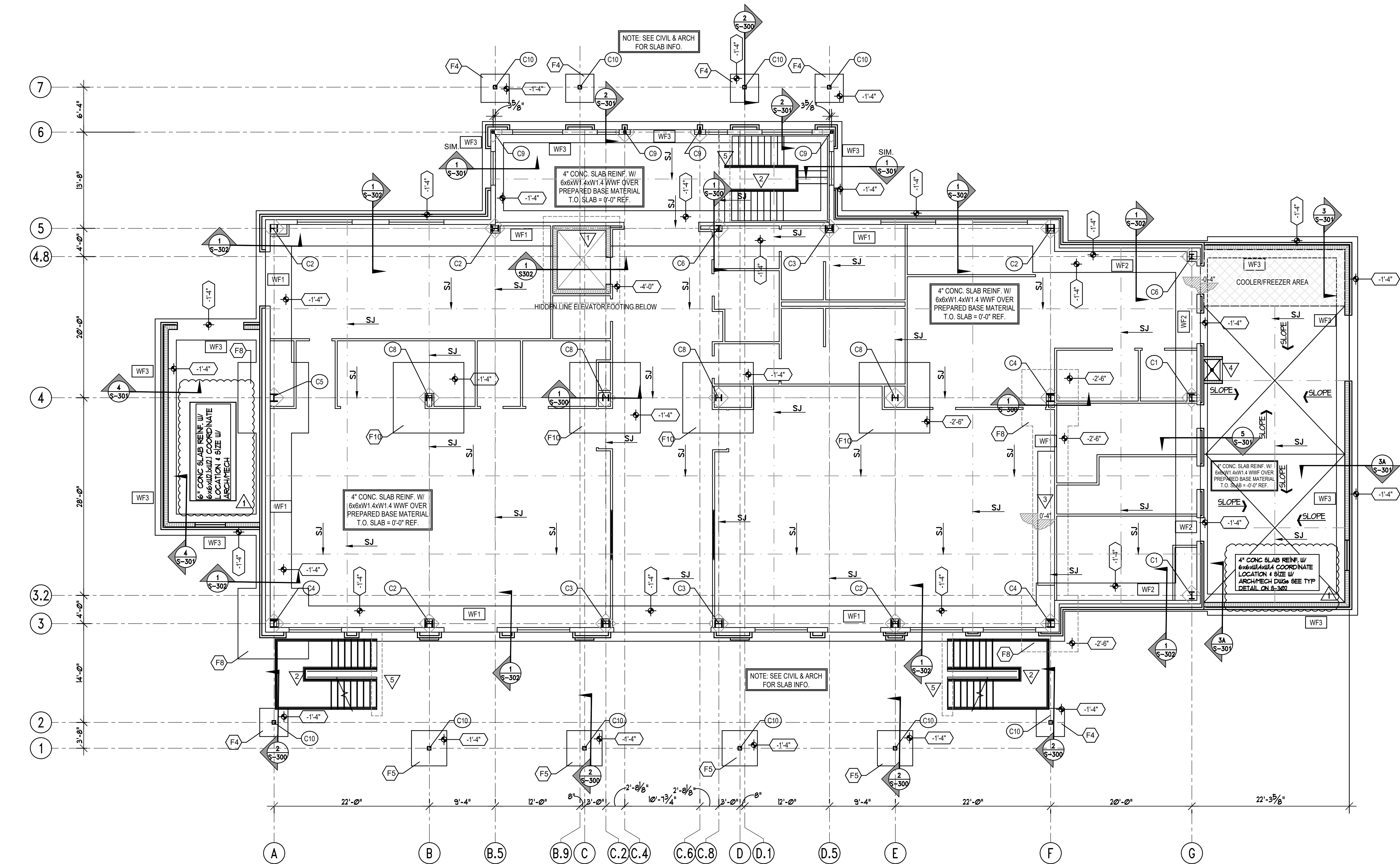


GENERAL NOTES - LANDSCAPE

1. ALL SPECIFIED PLANT MATERIAL SHALL COMPLY THE THE AMERICAN STANDARD FOR NURSERY STOCK (ANSI Z60.1-1996). TRUDESIGN STUDIO RESERVES THE RIGHT TO REJECT INFERIOR PLANT MATERIAL.
2. CONTRACTOR / OWNER SHALL NOTIFY TRUDESIGN STUDIO OF ANY CONCERNS WITH PLANT MATERIAL SPECIFIED. OTHERWISE CONTRACTOR / OWNER ASSUMES ALL RESPONSIBILITY IN INSTALLING PLANT MATERIAL INDICATED ON PLANT LIST.
3. LANDSCAPE CONTRACTOR / OWNER SHALL ESTIMATE QUANTITY OF ALL PLANT MATERIALS, SOD AND MULCH. PLANT QUANTITIES ARE ESTIMATES ONLY AND ARE SUBJECT TO FIELD VERIFICATION BY THE LANDSCAPE CONTRACTOR. THE PLANT LIST SHALL OVER RULE THE PLANT LABELS.
4. IF THERE ARE SPECIFIED SHRUBS THAT CANNOT BE LOCATED BY THE CONTRACTOR, THE CONTRACTOR HAS THE OPTION OF SUBSTITUTING ANY OF THOSE SHRUBS THAT CANNOT BE LOCATED. ONLY AFTER THE CONTRACTOR GETS PERMISSION OF SUBSTITUTION FROM TRUDESIGN STUDIO.
5. LANDSCAPE CONTRACTOR RESPONSIBLE FOR LOCATING ALL UTILITIES. ABOVE AND BELOW GROUND, SUCH AS PALMETTO UTILITY PROTECTION SERVICE. PRIOR TO INSTALLATION / CONSTRUCTION
6. ANY EXISTING PLANT MATERIALS OR EXISTING STRUCTURES DAMAGED DURING INSTALLATION OR CONSTRUCTION ARE TO BE REPAIRED OR REPLACED AT CONTRACTORS EXPENSE.
7. ALL CLEARING, AESTHETIC EARTH MOUNDING AND FINAL PLANT LOCATIONS TO BE APPROVED BY TRUDESIGN STUDIO PRIOR TO INSTALLATION.
8. LANDSCAPE CONTRACTOR SHALL BE RESPONSIBLE FOR INSTALLING A ROOT GROWTH BARRIER IN ALL LOCATIONS WHERE THE PLANT ROOTS MAY COME INTO CONTACT WITH ARCHITECTURAL ELEMENTS SUCH AS FOUNDATIONS, WALLS, SIDEWALKS, POOLS, ETC.
9. ALL PLANTING BEDS TO HAVE 3"4" DEPTH OF MULCH.
10. TREES LOCATED IN SOD TO HAVE A MULCH RING AROUND THEM (MULCH RING MINIMUM OF 3'-0" IN DIAMETER)
11. ALL SOD LOCATED ON ANY SLOPE TO BE PINNED DOWN IN PLACE TO PREVENT SLIDING.
12. ALL PLANTED AREAS WILL BE PRE-EMERGED TO INHIBIT WEED GERMINATION. CONTRACTOR RESPONSIBLE FOR WEED GROWTH 30 DAYS AFTER INSTALLATION.
13. HEIGHT OF ANY PLANT MATERIALS WITHIN THE SIGHT TRIANGLE SHALL BE MAINTAINED BY THOSE RESPONSIBLE AS REQUIRED. OWNER SHALL ALSO CONSIDER THE FUTURE MAINTENANCE REQUIREMENTS OF THIS PROJECT TO PREVENT INJURY TO THE PUBLIC.
14. APPLY 8-24-10 FERTILIZER @ 5 LBS. PER 1000 SQUARE FEET TO SOD.
15. LANDSCAPE CONTRACTOR SHALL REMOVE TREE STAKES AND GUYING AFTER 1 YEAR WARRANTY PERIOD HAS ENDED.
16. REFER TO PLANTING DETAILS SHEET OR LANDSCAPE PLAN REGARDING THE INSTALLATION OF PLANT MATERIAL.
17. ALL BEDS TO LAID OUT WITH SPRAY PAINT AND SIGNED OFF BY LANDSCAPE DESIGNER BEFORE BEDS ARE CUT.
18. ALL LANDSCAPE MATERIALS TO BE AUTOMATICALLY IRRIGATED.

	PLANT LIST - ADD ALTERNATIVE							
	ABR.	SCIENTIFIC NAME	COMMON NAME	QUANTITY	GAL.	CAL.	HT. @ INSTALL	
TREES / PALMS	CH	CHAMAEROPS HUMILIS 'MULTI STEM'	MULTI STEM EURO FAN PALM	1			5' HT	NATIVE
SHRUBS	LJ	LIGUSTRUM JAPONICA	RECURVE LIGUSTRUM	15			28" HT	
	MC	MUHLENBERGIA CAPILLARIS	MULHY GRASS	37			15" HT	NATIVE
	YA	YUCCA ALOIFOLIA	SPANISH BAYONET	3			36" HT	
		DOUBLE HAMMERED HARDWOOD MULCH	BROWN	20 YDS				
		AMENDED SOIL FOR LANDSCAPE BEDS		5 YDS				





COLUMN FOOTING SCHEDULE				
MARK	FOOTING SIZE			FOOTING REINFORCEMENT
	THICK	WIDTH	LENGTH	
F4	1'-0"	4'-0"	4'-0"	(6) - #5 BARS E/W BOT.
F5	1'-0"	5'-0"	5'-0"	(6) - #5 BARS E/W BOT.
F8	2'-0"	8'-0"	8'-0"	(9) - #6 BARS E/W TOP & BOT.
F10	1'-6"	10'-0"	10'-0"	(10) - #6 BARS E/W TOP & BOT.
(F1) DENOTES FOOTING DESIGNATION ON PLAN				
1. ALL REINFORCEMENT SHALL BE EACH WAY (U.N.O.) TYPICAL				
2. MAINTAIN 3" OF CONCRETE AROUND ALL REINFORCEMENT (U.N.O.) TYPICAL				
3. SEE S-300/301 FOR TYPICAL BASE PLATE & ANCHOR BOLT DETAILS				

- 1'-4"
- DENOTES TOP OF FOOTING ELEVATION FROM REF. ELEV (0'-0")
ALL TOP OF FOOTING ELEVATIONS = (-) 1'-4" UNLESS NOTED OTHERWISE
- DENOTES ELEVATOR SHAFT.
- STEEL STAIRS DESIGNED BY STEEL STAIR SUPPLIER UNDER SUPERVISION OF S.C. REGISTERED ENGINEER.
- DENOTES RAISED SLAB SEE ARCH FOR EXACT LOCATION
- DENOTES 4" TALL CURB SEE ARCH FOR EXACT LOCATION
- PROVIDE THICKEN SLAB PER DETAIL ON SHEET S-300 AT BASE OF STAIRS
- DENOTES DEPRESSION OR RECESSED SLAB ON PLAN SEE ARCH DRAWINGS FOR DEPTH, SLOPE REQ, FLR DRAIN REQ & EXACT LOCATION

FOUNDATION PLAN

SCALE ===== 1/8" = 1'-0"

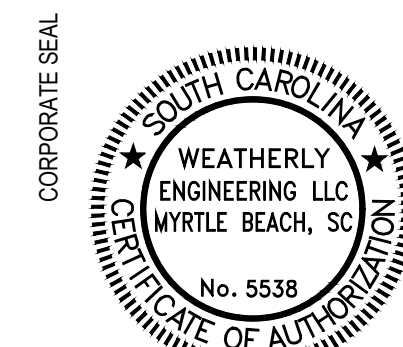
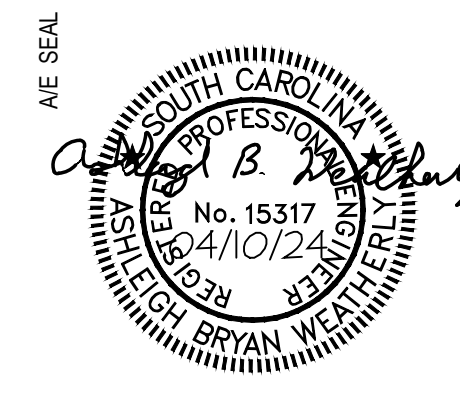
CONTINUOUS SPREAD FOOTING SCHEDULE			
WF1	5'-0" x 2'-0" THICK FTG. W/ (6) #5 BARS CONT. (BOT.) & #5 SHORT BARS @ 16" O.C.		
WF2	4'-0" x 1'-6" THICK FTG. W/ (5) #5 BARS CONT. (BOT.) & #5 SHORT BARS @ 16" O.C.		
WF3	3'-0" x 1'-0" THICK FTG. W/ (4) #5 BARS CONT. (BOT.) & #4 SHORT BARS @ 16" O.C.		

COLUMN SCHEDULE						
MARK	COLUMN SIZE	BEARING PLATE SIZE			ANCHOR RODS NO. / SIZE	BEARING PLATE GRADE TYPE
		THICKNESS	WIDTH	LENGTH		
C1	W12x40	2"	18"	28"	8 - 1" DIA	A36 III
C2	W12x72	1-1/4"	18"	22"	6 - 1" DIA	A36 II
C3	W12x79	1-1/4"	18"	22"	6 - 1" DIA	A36 II
C4	W12x106	2-1/2"	36"	36"	8 - 1-1/2" DIA	A572 gr50 IV
C5	W12x106	2-1/2"	36"	38"	8 - 1-1/2" DIA	A572 gr50 IV
C6	W10x33	3/4"	16"	16"	4 - 3/4" DIA	A36 II
C7	NOT USED					
C8	W10x77	1-1/2"	18"	22"	6 - 1" DIA	A36 II
C9	HSS 4x4x1/4"	3/4"	10"	10"	4 - 3/4" DIA	A36 I-A
C10	HSS 6x6x3/16"	3/4"	12"	12"	4 - 3/4" DIA	A36 I-B
(C7) - DENOTES COLUMN DESIGNATION ON PLAN						
1. ALL ANCHOR BOLTS TO HAVE STANDARD HOOK (U.N.O.)						
2. ALL EXPOSED STEEL BELOW GRADE SHOULD HAVE A 3" MINIMUM CONCRETE COVER						

WE PROJECT NUMBER: 23-104

Weatherly
STRUCTURAL ENGINEERS
514 Alder Street Box B Suite 2, Myrtle Beach, S.C. 29577 Ph. 843.448.3428 Fax 843.445.9116
COPYRIGHT 2023 ALL RIGHTS RESERVED
PRINTED OR ELECTRONIC DRAWINGS AND
DOCUMENTATION MAY NOT BE REPRODUCED
IN ANY FORM WITHOUT WRITTEN PERMISSION
FROM WEATHERLY ENGINEERING.

QUACKENBUSH ARCHITECTS + PLANNERS
1217 HAMPTON | COLUMBIA, SC | 803.771.2999 | quackenbusharchitects.com



PROJECT TITLE
**PGA GOLF MANAGEMENT PROGRAM
ACADEMIC LEARNING LAB CONSTRUCTION**
COASTAL CAROLINA UNIVERSITY
107 CITADEL DR. CONWAY, SC 29526

CONDITIONS OF USE:
THIS DRAWING AND THE DESIGN THEREON ARE THE PROPERTY OF
QUACKENBUSH ARCHITECTS + PLANNERS.
THE REPRODUCTION, COPYING, OR USE OF THIS DRAWING
WITHOUT THE WRITTEN PERMISSION OF QUACKENBUSH ARCHITECTS + PLANNERS IS
ANY INFRINGEMENT WILL BE SUBJECT TO LEGAL ACTION.
COPYRIGHT TM 2019 QUACKENBUSH ARCHITECTS + PLANNERS

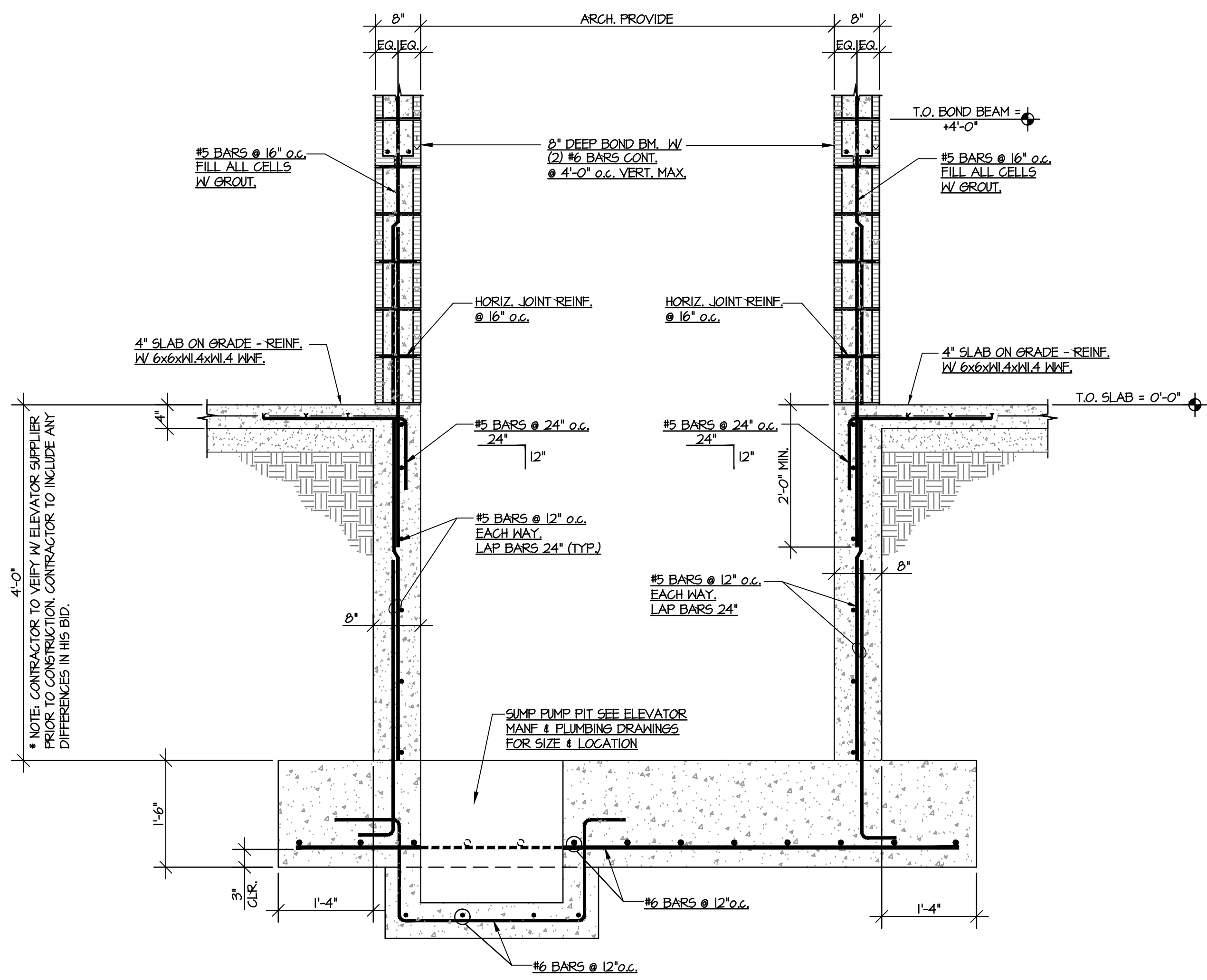
PHASE
CONSTRUCTION
DOCUMENTS - FINAL

ISSUE DATE 04.10.24
PROJECT NO. 22.304.00
STATE PROJECT NO. H17-9623-MJ

REVISION
ADDENDUM #1
DATE
6-12-25

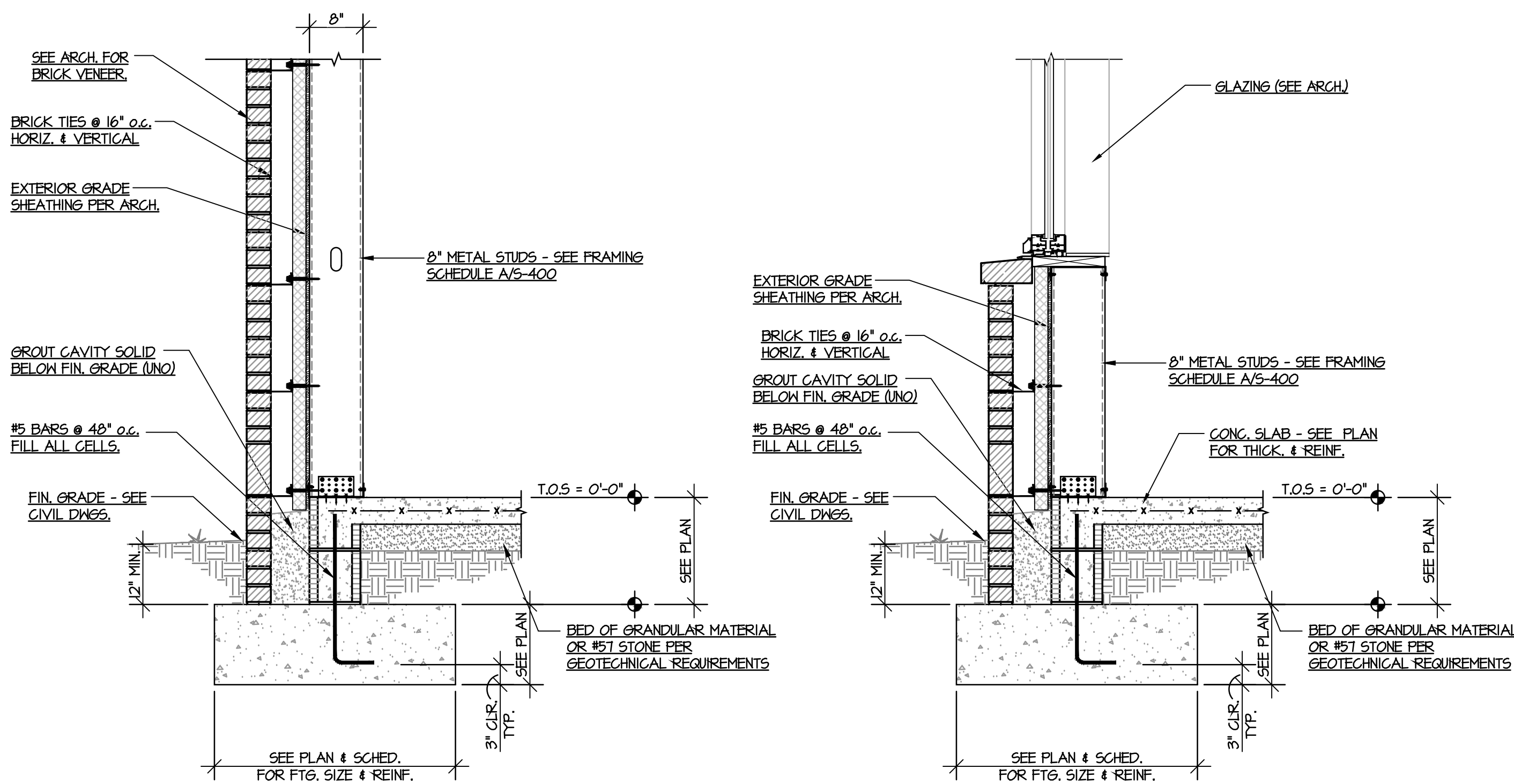
TITLE
FOUNDATION PLAN

SHEET NO.
S-200



TYPICAL SECTION AT ELEVATOR

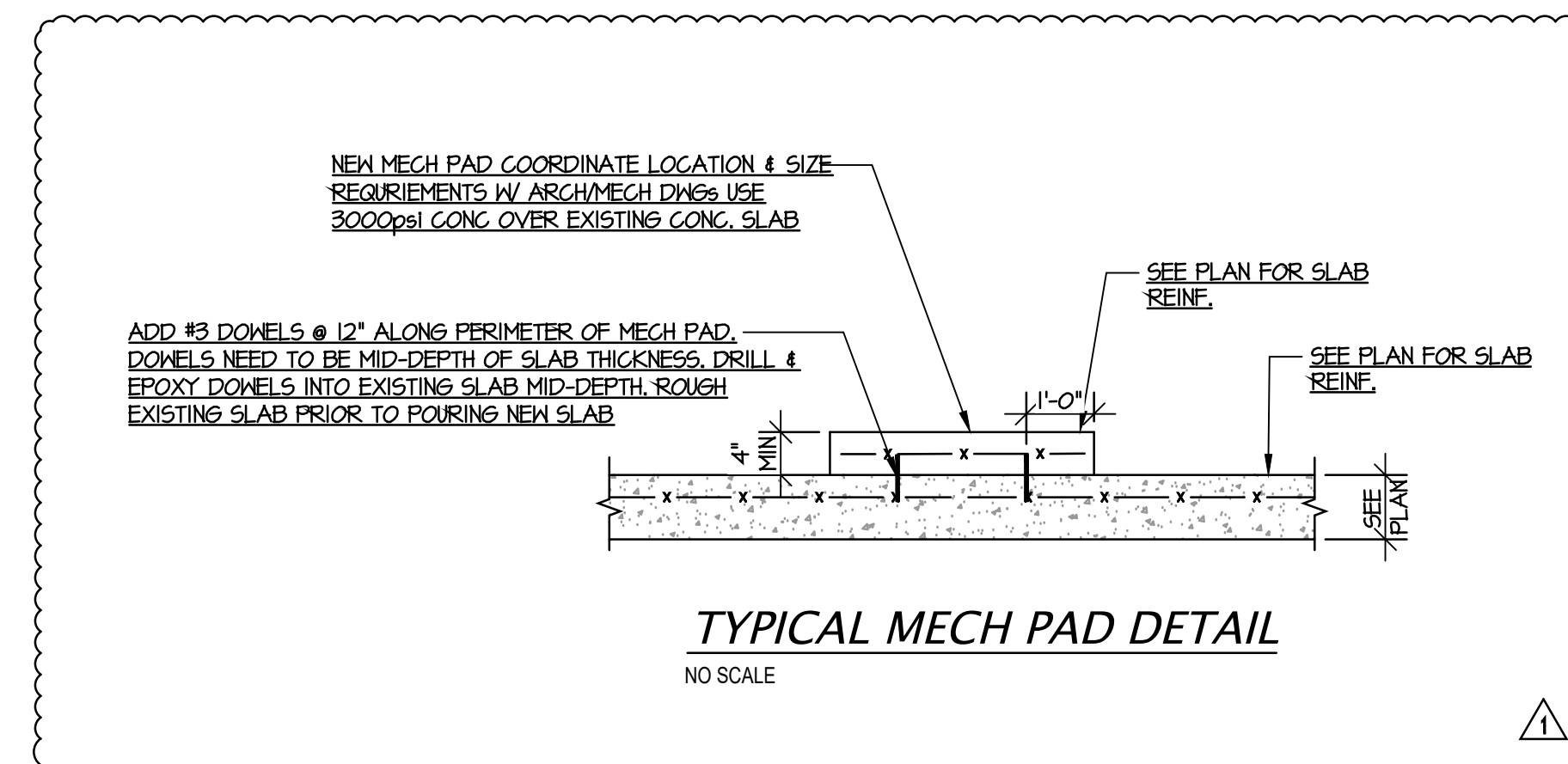
SECTION
SCALE = 3/4" = 1'-0" S-30



TYPICAL SECTION THRU EXTERIOR STUD WALL

SECTION
SCALE = 3/4" = 1'-0" S-30

MASONRY BLOCK LINTEL SCHEDULE				
8" MASONRY BLOCK WALL	MARK	LINTEL DISCRIPTION	REFERENCE DIAGRAM	DIAGRAMS (Not to Scale)
	BB.1	8" DEEP BOND BM. W/ 2-#5 BARS CONT.	DIAGRAM A	SEE PLAN 8" LINTEL BEAM
8" MASONRY BLOCK WALL	W/O BRICK VENEER			
	W/ BRICK VENEER			
8" MASONRY BLOCK WALL	MARK	LINTEL DISCRIPTION	REFERENCE DIAGRAM	DIAGRAMS (Not to Scale)
	BB8.1	8" DEEP BOND BM. W/ 2-#5 BARS CONT. W/ BENT PLATE	DIAGRAM B	SEE ARCH. PLAN SEE SCHEDULE 1/2" MIN. 5/8" MAX. 3/4" DIA. x 6" LONG EXP. BOLTS @ 16" o.c.
	W/O BRICK VENEER			
	W/ BRICK VENEER			
MASONRY OPENING REINFORCEMENT DETAIL (Not to Scale)				
<p>CONTRACTOR'S NOTES:</p> <ol style="list-style-type: none"> CONTRACTOR MAY USE A STEEL ANGLE OF THE SAME SIZE (OR GREATER) IN LIEU OF BENT PLATE. SOME LINTELS IN THIS SCHEDULE MAY NOT BE USED. CONTRACTOR MAY SELECT APPROPRIATE LINTEL ACCORDING TO OPENING SIZE AND WALL CONSTRUCTION, UNLESS NOTED OTHERWISE. SEE ARCHITECTURAL DRAWINGS FOR WALL WIDTHS AND VENEER COURSING. ALL MASONRY LINTEL BEARING TO BE 18" MIN. ON EACH SIDE. BRICK VENEER SUPPORT TO BEAR 8" MIN. ON EACH SIDE. SEE STRUCTURAL PLAN AND ADDITIONAL WALL SECTIONS FOR WALL REINFORCEMENT AND SPACING. SEE TYPICAL BEARING PLATE SCHEDULE AND DETAILS FOR PLATE SIZE AND NUMBER OF ANCHORS. 				
<p>INSTALL JAMB BARS (EACH CELL) @ LINTEL BEARING = SAME REBAR SIZE AS WALL REIN.</p> <p>EXTEND LINTEL BARS INTO FILLED CELLS.</p> <p>IN-PLACE W/ MASONRY BETWEEN WINDOW & BOTTOM OF BLOCK LINTEL AS NEEDED.</p> <p>NOTE: CONTRACTOR MAY LOWER BOND BEAM AT SILL OF WINDOW ONE COURSE TO ALLOW FOR WINDOW SILL REQUIREMENTS.</p> <p>DOWELS TO EXTEND INTO FOOTING, WALL, BELOW OR LAP W/ STACKED STUDS FROM STEEL BEAM LAP BARS AS REQUIRED.</p>				

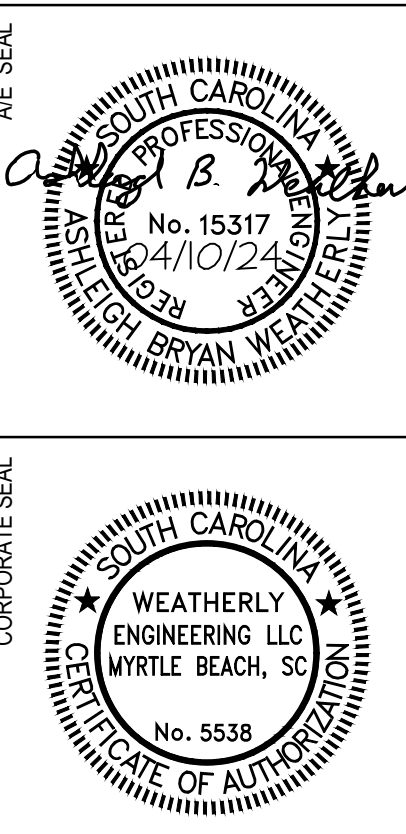


TYPICAL MECH PAD DETAIL
NO SCALE

WE PROJECT NUMBER: 23-104

Weatherly
STRUCTURAL ENGINEERS
514 Alder Street Box B Suite 2, Myrtle Beach, S.C. 29577 Ph. 843.448.3428 Fax 843.445.9116
COPYRIGHT 2023 ALL RIGHTS RESERVED
PRINTED OR ELECTRONIC DRAWINGS AND DOCUMENTATION MAY NOT BE REPRODUCED IN ANY FORM WITHOUT WRITTEN PERMISSION FROM WEATHERLY ENGINEERING.

QUACKENBUSH ARCHITECTS + PLANNERS
1217 HAMPTON | COLUMBIA, SC | 803.771.2599 | quackenbusharchitects.com



PGA GOLF MANAGEMENT PROGRAM
ACADEMIC LEARNING LAB CONSTRUCTION
COASTAL CAROLINA UNIVERSITY
107 CITADEL DR. CONWAY, SC 29626

CONSTRUCTION DOCUMENTS - FINAL
ISSUE DATE 04.10.24
PROJECT NO. 22.304.00
STATE PROJECT NO. H17-9623-MJ

REVISION
ADDENDUM #4

DATE
6-12-25

TITLE
DETAILS

SHEET NO.
S-302