



COPYRIGHT 2021 ALL RIGHTS RESERVED. PRINTED OR ELECTRONIC DRAWINGS AND DOCUMENTATION MAY NOT BE REPRODUCED IN ANY FORM WITHOUT WRITTEN PERMISSION FROM LSP ASSOCIATES LTD.

NH-NHRMC Scotts Hill Medical Center

151 Scotts Hill Medical Drive Wilmington, NC 28411

LS3P PROJECT: 7401-198520

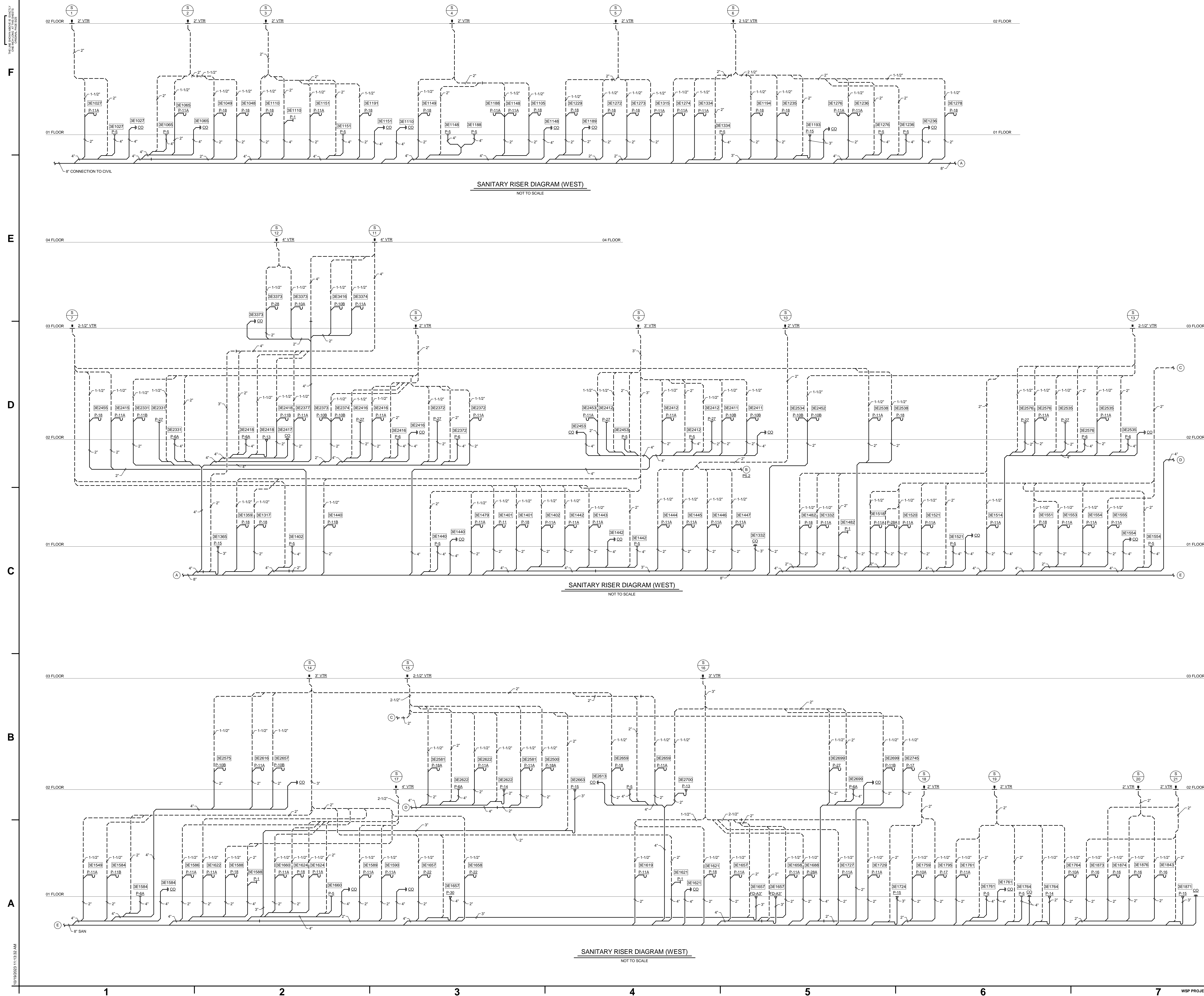
[illegible]

SHEET NAME:
SANITARY RISER
DIAGRAMS - WEST

ORIG 2023.02.03
SUBMISSION:

SHEET: **P5.1**

PERMIT SET



THIS DRAWING IS THE PROPERTY OF NOVANT HEALTH. IT IS TO BE USED ONLY FOR THE PROJECT AND SITE SPECIFICALLY IDENTIFIED HEREIN. NO PART OF THIS DRAWING IS TO BE REPRODUCED OR TRANSMITTED IN ANY FORM OR BY ANY MEANS, ELECTRONIC OR MECHANICAL, WITHOUT PERMISSION IN WRITING FROM NOVANT HEALTH.

F

04 FLOOR

E

03 FLOOR

02 FLOOR

D

01 FLOOR

C

04 FLOOR

03 FLOOR

B

02 FLOOR

A

01 FLOOR

01/10/2023 11:13:35 AM

WSP PROJECT NO.: B2101351.000

PERMIT SET

LS3P

NOVANT HEALTH

Novant Health /
New Hanover
Regional Medical
Center

KahlerSlater

LS3P

101 NORTH THIRD STREET, SUITE 500
WILMINGTON, NORTH CAROLINA 28401
TEL. 910.790.3901 FAX. 910.790.3111
WWW.LS3P.COM

WSP USA Buildings Inc.
Formerly Leach Wallace Associates, Inc.
7067 Columbia Gateway Drive, Suite 250
Columbia, Maryland 21046
P. 410.579.8100

PROFESSIONAL
SEAL
OF THE
STATE OF
NORTH CAROLINA
FOR THE
PRACTICE OF
ENGINEERING
JAMES H. LEACH
No. 10000

Copyright 2021. All rights reserved. Printed on
electronic drawings and documentation may
not be reproduced or transmitted in any form
or by any means, electronic or mechanical,
including photocopying, recording, or by
information storage and retrieval systems,
without permission in writing from LS3P Associates Ltd.

LS3P PROJECT: 7401-198520

SHOOT NAME:
SANITARY RISER
DIAGRAMS - MIDDLE

ORIG
SUBMISSION:

2023.02.03

SHEET:

P5.2

PERMIT SET

05 FLOOR

04 FLOOR

03 FLOOR

02 FLOOR

01 FLOOR

05 FLOOR

04 FLOOR

03 FLOOR

02 FLOOR

01 FLOOR

05 FLOOR

04 FLOOR

03 FLOOR

02 FLOOR

01 FLOOR

05 FLOOR

04 FLOOR

03 FLOOR

02 FLOOR

01 FLOOR

05 FLOOR

04 FLOOR

03 FLOOR

02 FLOOR

01 FLOOR

05 FLOOR

04 FLOOR

03 FLOOR

02 FLOOR

01 FLOOR

05 FLOOR

04 FLOOR

03 FLOOR

02 FLOOR

01 FLOOR

05 FLOOR

04 FLOOR

03 FLOOR

02 FLOOR

01 FLOOR

05 FLOOR

04 FLOOR

03 FLOOR

02 FLOOR

01 FLOOR

05 FLOOR

04 FLOOR

03 FLOOR

02 FLOOR

01 FLOOR

05 FLOOR

04 FLOOR

03 FLOOR

02 FLOOR

01 FLOOR

05 FLOOR

04 FLOOR

03 FLOOR

02 FLOOR

01 FLOOR

05 FLOOR

04 FLOOR

03 FLOOR

02 FLOOR

01 FLOOR

05 FLOOR

04 FLOOR

03 FLOOR

02 FLOOR

01 FLOOR

05 FLOOR

04 FLOOR

03 FLOOR

02 FLOOR

01 FLOOR

05 FLOOR

04 FLOOR

03 FLOOR

02 FLOOR

01 FLOOR

05 FLOOR

04 FLOOR

03 FLOOR

02 FLOOR

01 FLOOR

05 FLOOR

04 FLOOR

03 FLOOR

02 FLOOR

01 FLOOR

05 FLOOR

04 FLOOR

03 FLOOR

02 FLOOR

01 FLOOR

05 FLOOR

04 FLOOR

03 FLOOR

02 FLOOR

01 FLOOR

05 FLOOR

04 FLOOR

03 FLOOR

02 FLOOR

01 FLOOR

05 FLOOR

04 FLOOR

03 FLOOR

02 FLOOR

01 FLOOR

05 FLOOR

04 FLOOR

03 FLOOR

02 FLOOR

01 FLOOR

05 FLOOR

04 FLOOR

03 FLOOR

02 FLOOR

01 FLOOR

05 FLOOR

04 FLOOR

03 FLOOR

02 FLOOR

01 FLOOR

05 FLOOR

04 FLOOR

03 FLOOR

02 FLOOR

01 FLOOR

05 FLOOR

04 FLOOR

03 FLOOR

02 FLOOR

01 FLOOR

05 FLOOR

04 FLOOR

03 FLOOR

02 FLOOR

01 FLOOR

05 FLOOR

04 FLOOR

03 FLOOR

02 FLOOR

01 FLOOR

05 FLOOR

04 FLOOR

03 FLOOR

02 FLOOR

01 FLOOR

05 FLOOR

04 FLOOR

03 FLOOR

02 FLOOR

01 FLOOR

05 FLOOR

04 FLOOR

03 FLOOR

02 FLOOR

01 FLOOR

05 FLOOR

04 FLOOR

03 FLOOR

02 FLOOR

01 FLOOR

05 FLOOR

04 FLOOR

03 FLOOR

02 FLOOR

01 FLOOR

05 FLOOR

04 FLOOR

03 FLOOR

02 FLOOR

01 FLOOR

05 FLOOR

04 FLOOR

03 FLOOR

02 FLOOR

01 FLOOR

05 FLOOR

04 FLOOR

03 FLOOR

02 FLOOR

01 FLOOR

05 FLOOR

04 FLOOR

03 FLOOR

02 FLOOR

01 FLOOR

05 FLOOR

04 FLOOR

03 FLOOR

02 FLOOR

01 FLOOR

05 FLOOR

04 FLOOR

03 FLOOR

02 FLOOR

01 FLOOR

05 FLOOR

04 FLOOR

03 FLOOR

02 FLOOR

01 FLOOR

05 FLOOR

04 FLOOR

03 FLOOR

02 FLOOR

01 FLOOR

05 FLOOR

04 FLOOR

03 FLOOR

02 FLOOR

01 FLOOR

05 FLOOR

04 FLOOR

03 FLOOR

02 FLOOR

01 FLOOR

05 FLOOR

04 FLOOR

03 FLOOR

02 FLOOR

01 FLOOR

05 FLOOR

04 FLOOR

03 FLOOR

02 FLOOR

01 FLOOR

05 FLOOR

04 FLOOR

03 FLOOR

02 FLOOR

01 FLOOR

05 FLOOR

04 FLOOR

03 FLOOR

02 FLOOR

01 FLOOR

05 FLOOR

04 FLOOR

03 FLOOR

02 FLOOR

01 FLOOR

05 FLOOR

04 FLOOR

03 FLOOR

02 FLOOR

01 FLOOR

05 FLOOR

04 FLOOR

03 FLOOR

02 FLOOR

01 FLOOR

05 FLOOR

04 FLOOR

03 FLOOR

02 FLOOR

01 FLOOR

05 FLOOR

04 FLOOR

03 FLOOR

02 FLOOR

01 FLOOR

05 FLOOR

04 FLOOR

03 FLOOR

02 FLOOR

01 FLOOR

05 FLOOR

04 FLOOR

03 FLOOR

02 FLOOR

01 FLOOR

05 FLOOR

04 FLOOR

03 FLOOR

02 FLOOR

01 FLOOR

05 FLOOR

04 FLOOR

03 FLOOR

02 FLOOR

01 FLOOR

05 FLOOR

04 FLOOR

03 FLOOR

02 FLOOR

01 FLOOR

05 FLOOR

04 FLOOR

03 FLOOR

02 FLOOR

01 FLOOR

05 FLOOR

04 FLOOR

03 FLOOR

02 FLOOR

01 FLOOR

05 FLOOR

04 FLOOR

03 FLOOR

02 FLOOR

01 FLOOR

05 FLOOR

04 FLOOR

03 FLOOR

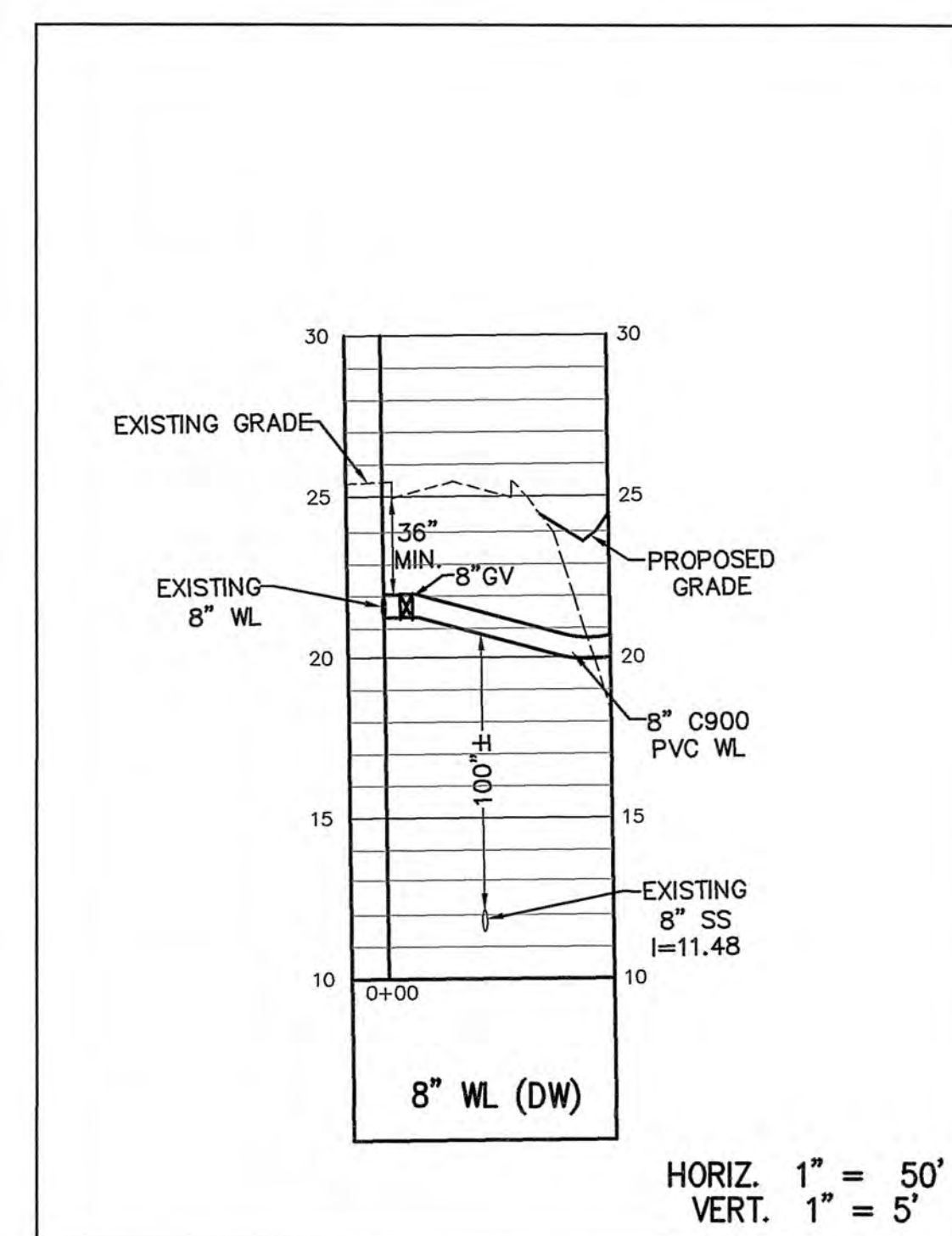
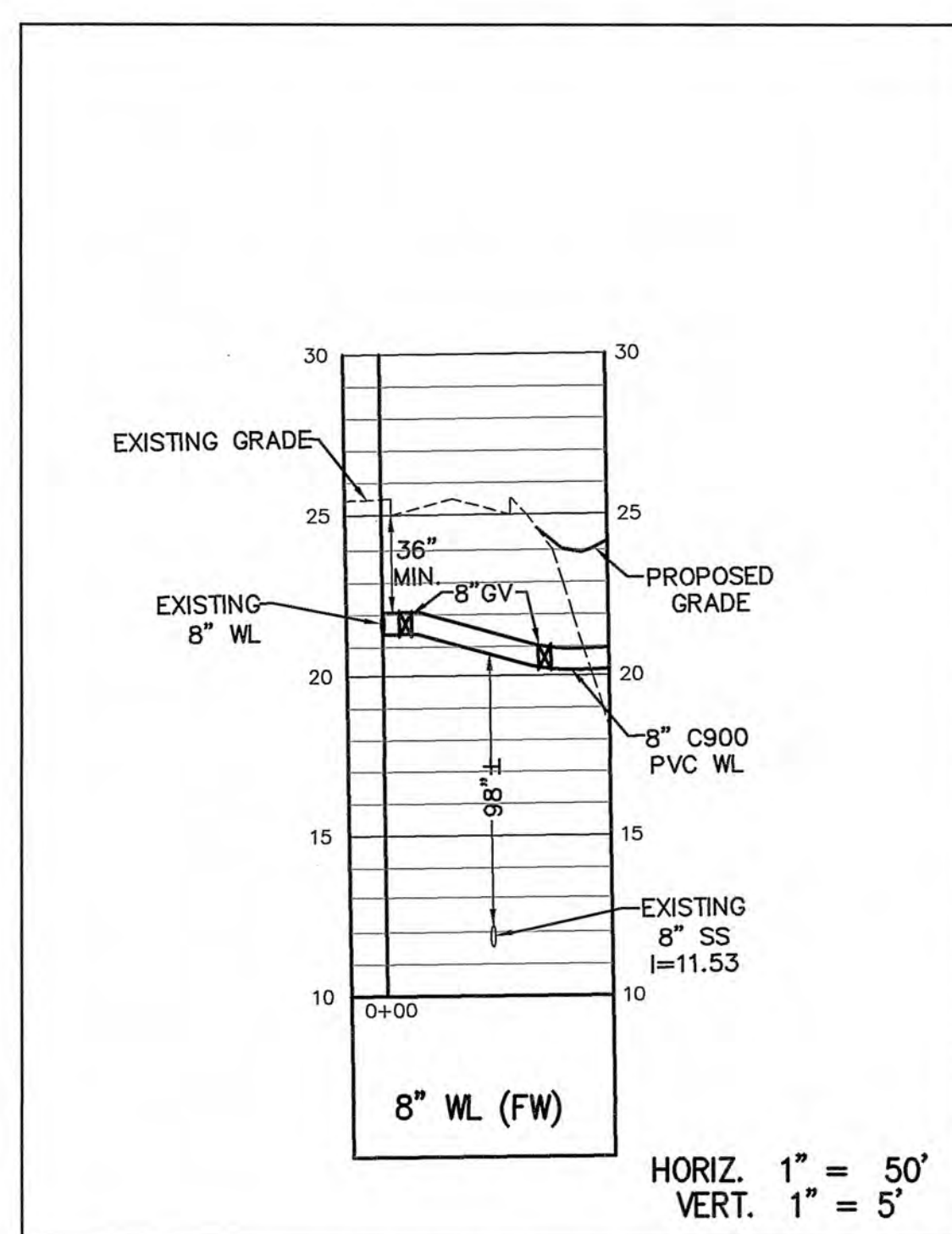
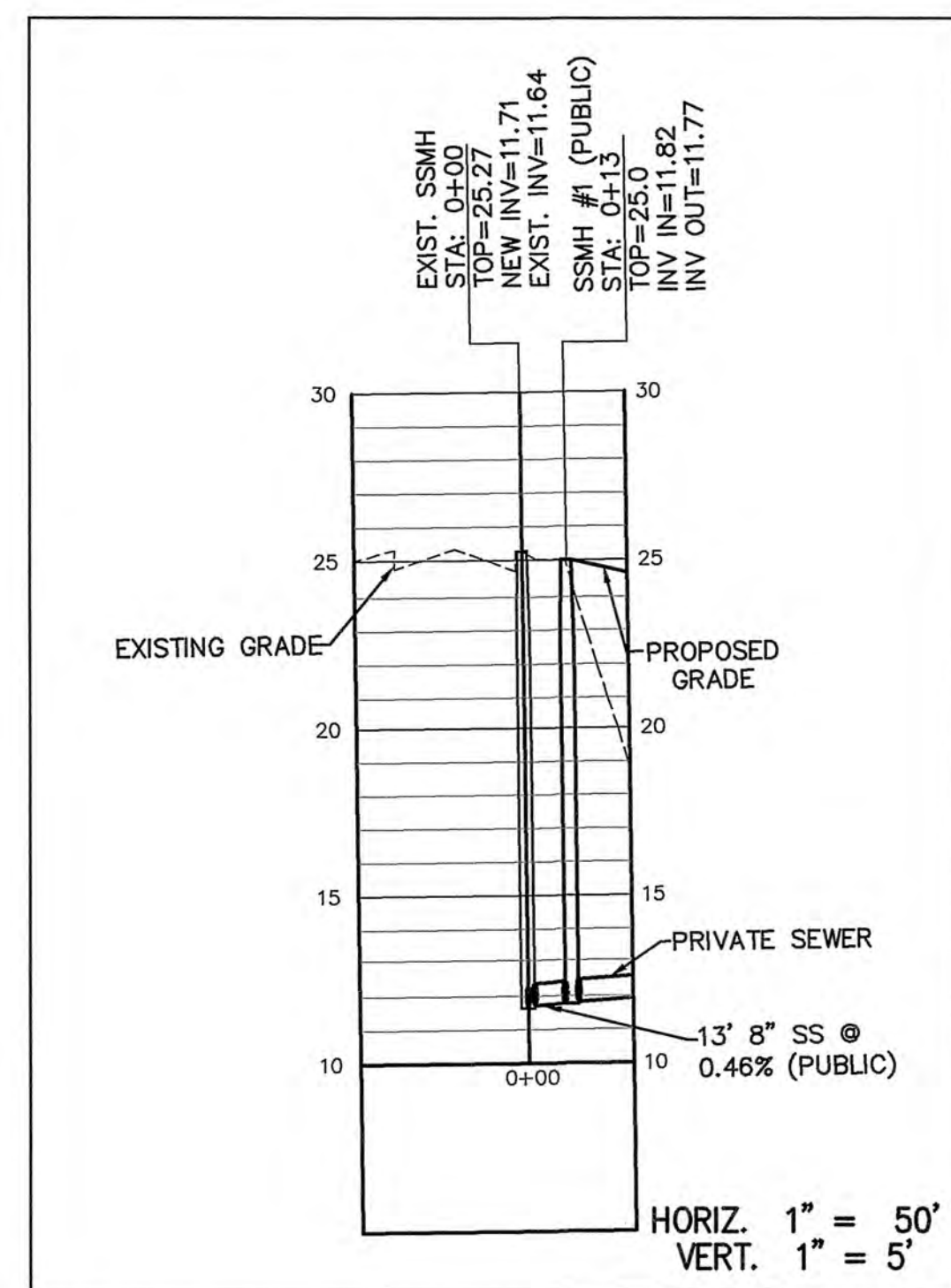
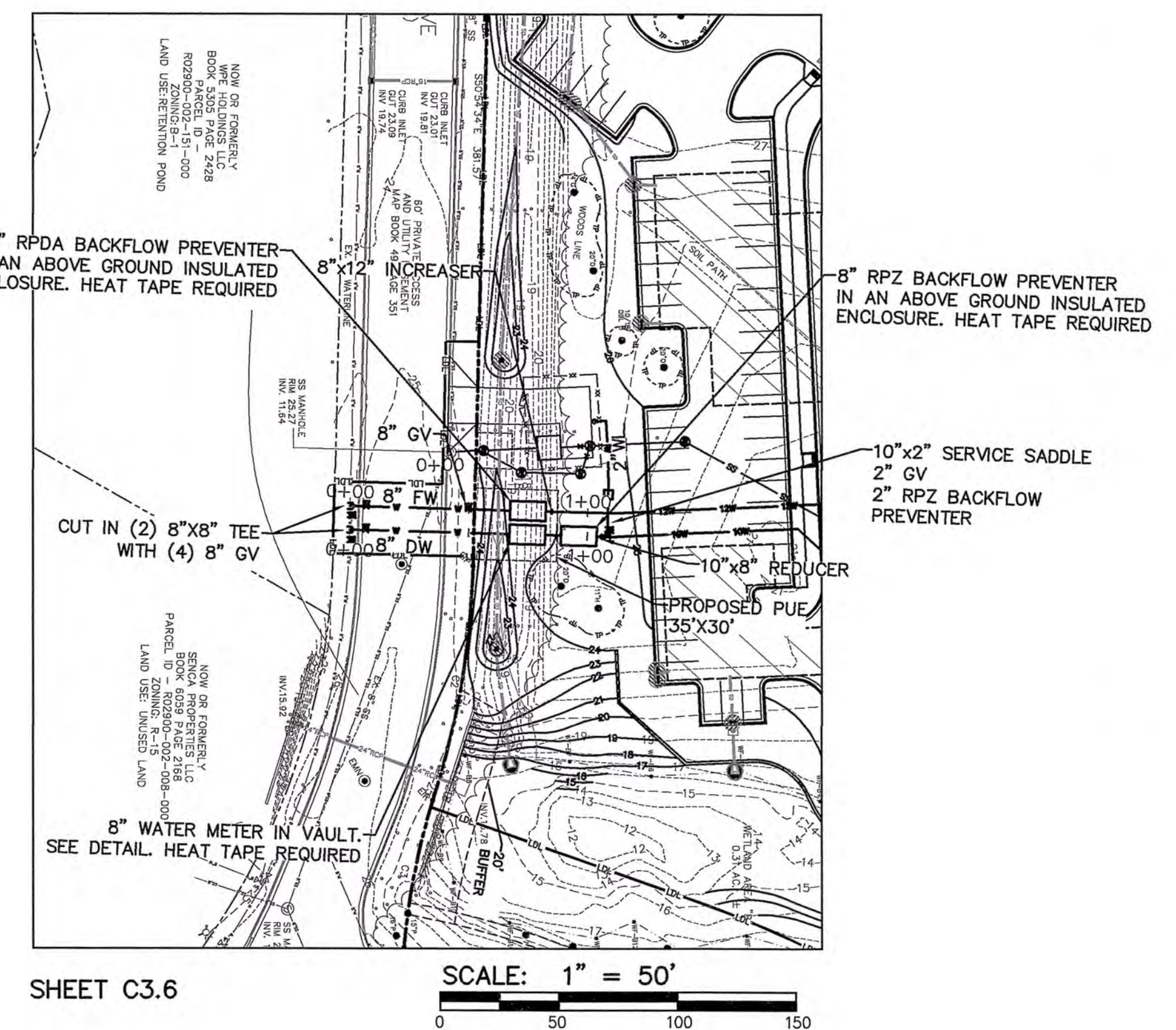
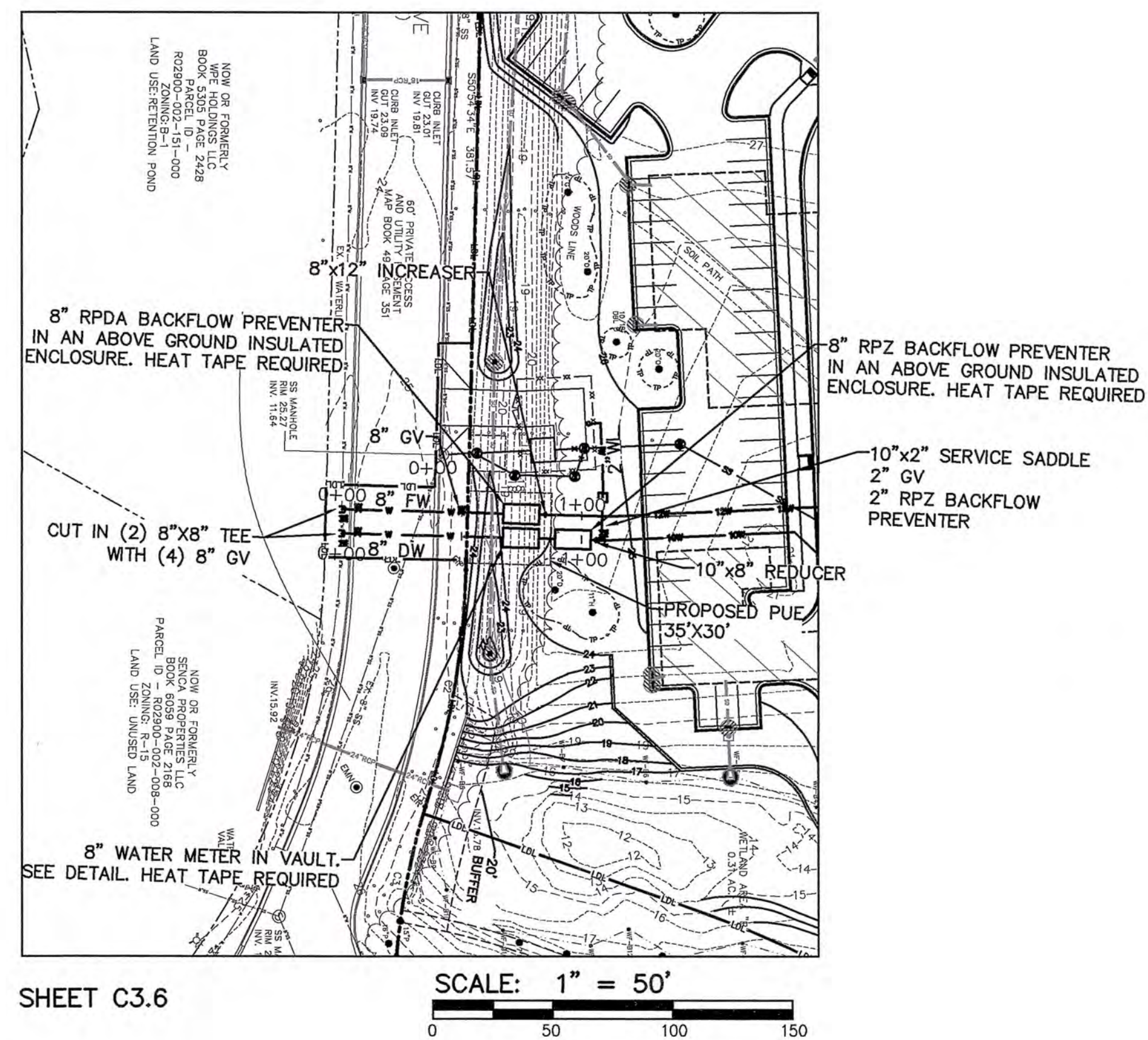
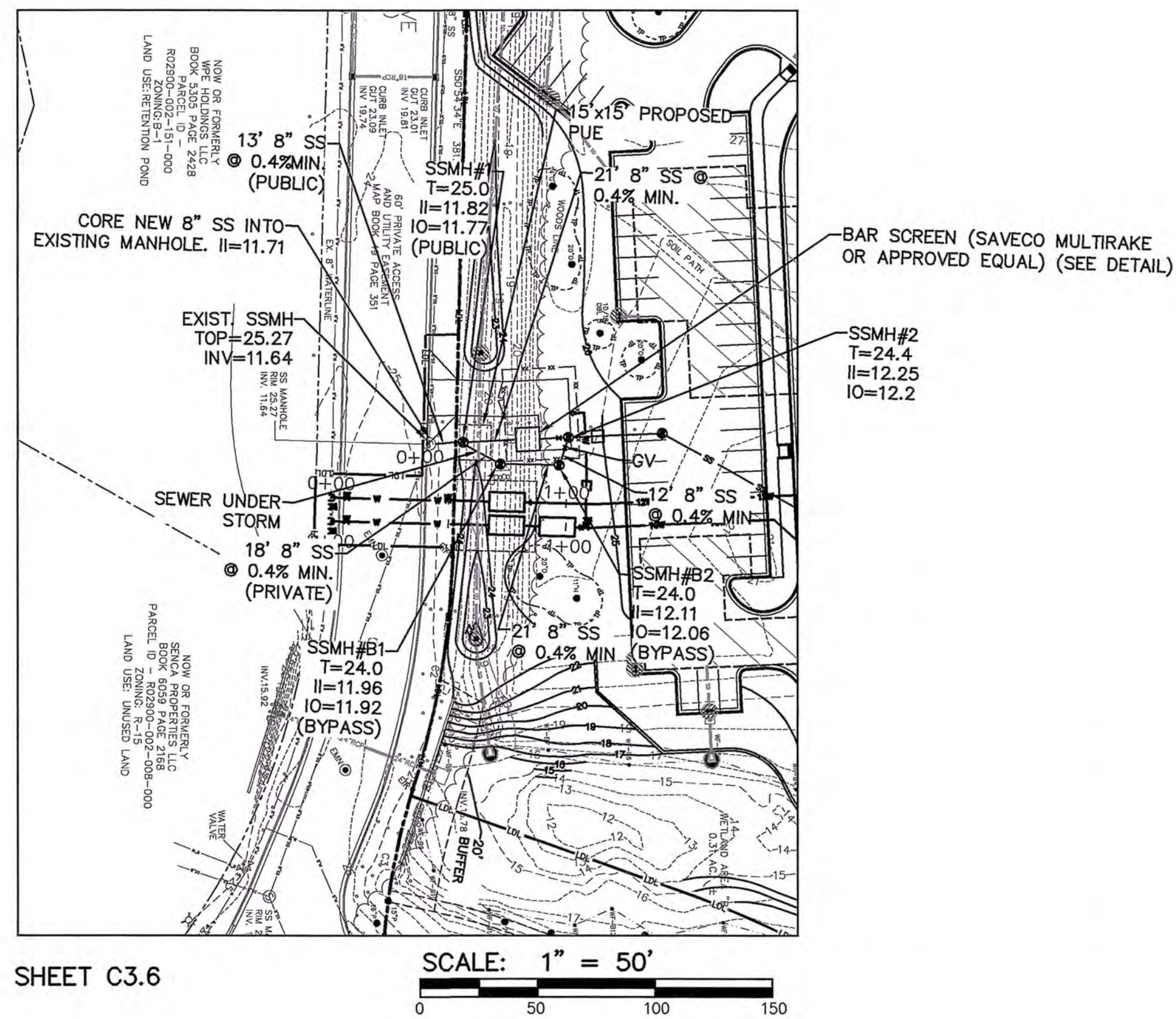
02 FLOOR

PERMIT SET

PERMIT SET

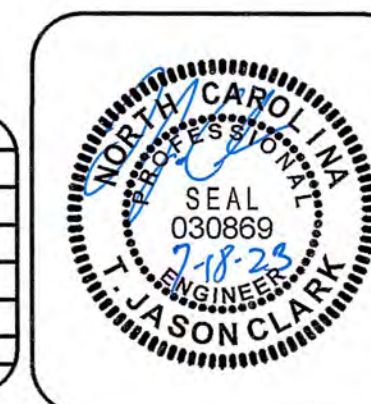


PERMIT SET



*REFER TO CFPWA WATER MAIN AND SANITARY SEWER STANDARD DETAIL SHEETS FOR DETAILS OF ALL CROSSINGS OF WATER LINE, SANITARY SEWER LINE AND STORM DRAIN LINES.

REV NO.	DESCRIPTION	DATE



NORRIS & TUNSTALL
CONSULTING ENGINEERS P.C.
2602 IRON GATE DR., SUITE 102 WILMINGTON, NC 28412
1429 ASHLITTLE RIVER RD. NW ASH, NC 28420
PHONE (910) 343-9653 License #C-3641 PHONE (910) 287-5900

SCOTTS HILL MEDICAL CENTER
SANITARY SEWER
PLAN & PROFILE

DATE: 7/18/23
SCALE: 1" = 50'
1" = 5'

DRAWN: RPH
CHECKED: JST
PROJECT NO: 21192

SHEET NO:
PR1