

1

2



3

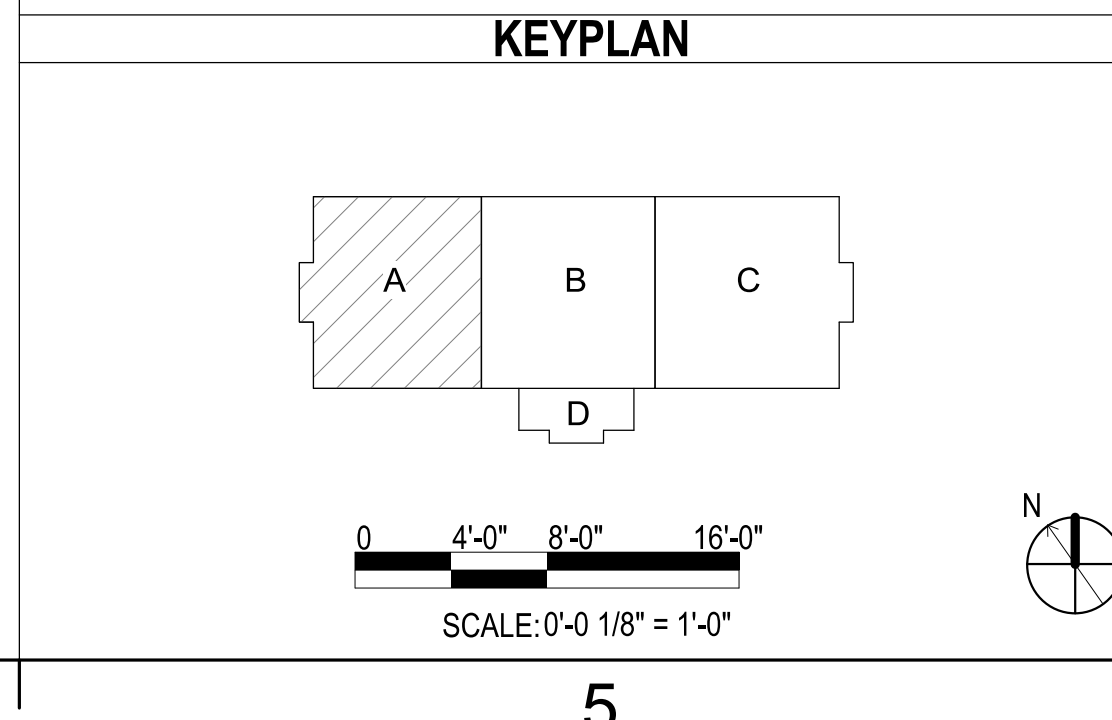
4

5



GENERAL NOTES
 1 SEE SHEET T-001 FOR TELECOMMUNICATIONS NOTES, SYMBOLS, AND ABBREVIATIONS.

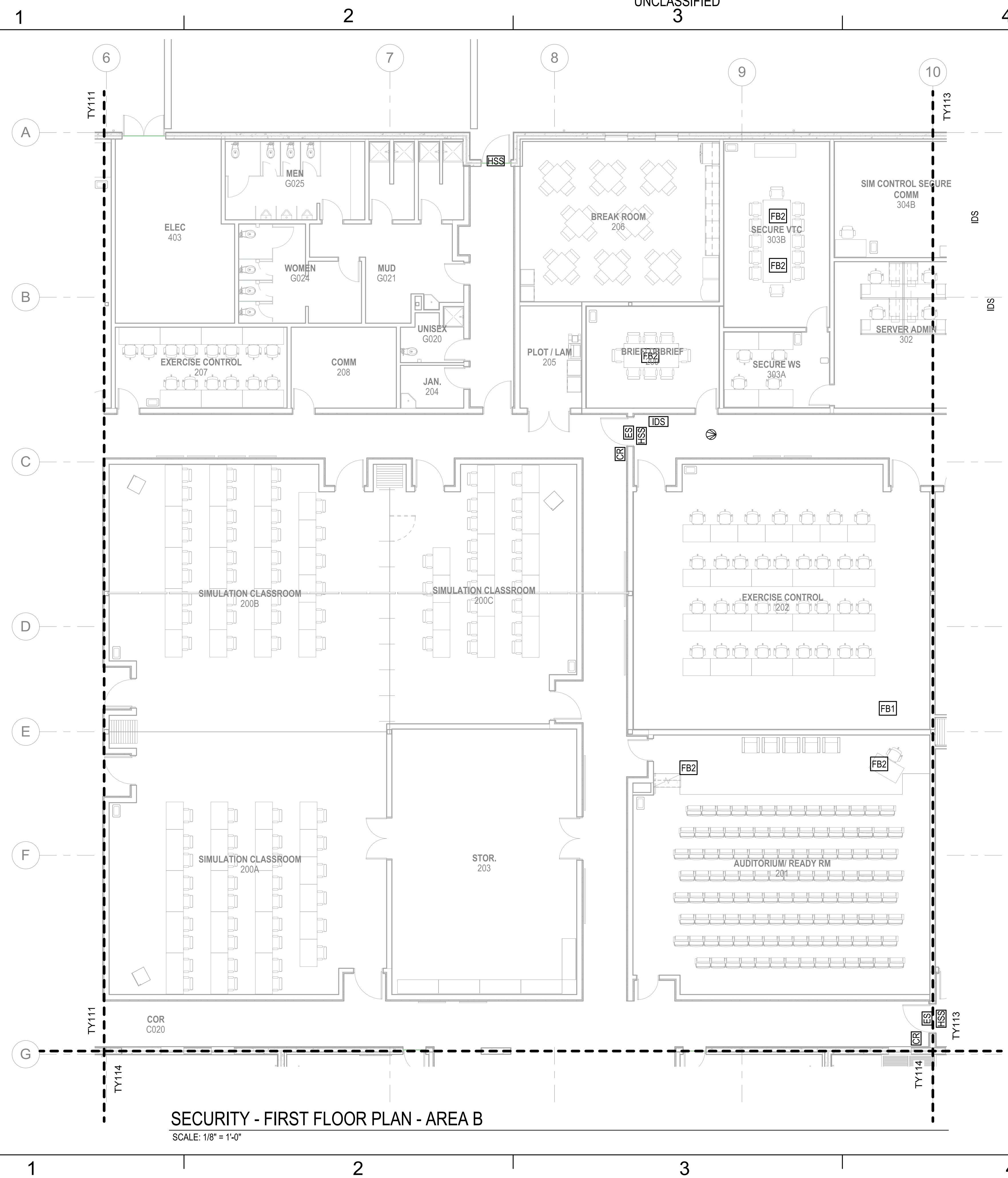
APPR	
DATE	
SYN	DESCRIPTION
SEAL	
 NAVFAC	
 RQ Jordan COMPANY - A JOINT VENTURE -	
Michael Baker INTERNATIONAL 100 AIRSIDE DRIVE MOON TOWNSHIP, PA 15108 A/E/IN/P APPROVED	
FOR COMMANDER NAVFAC	
ACTIVITY	
MARINE CORPS BASE CAMP LEJEUNE	
SATISFACTORY TO DATE	
DES	CHK
DRW	CHK
PM	
BRANCH MANAGER	
CHIEF ENGINEER	
FIRE PROTECTION	
NAVAL FACILITIES ENGINEERING COMMAND NAVAL FACILITIES ENGINEERING COMMAND ~ MID-ATLANTIC JACKSONVILLE, NC MCB CAMP LEJEUNE JACKSONVILLE, NC P1338 II MEF SIMULATION/TRAINING CENTER REPLACEMENT SECURITY - FIRST FLOOR PLAN - AREA A	
DEPARTMENT OF THE NAVY NAVAL FACILITIES ENGINEERING COMMAND ~ MID-ATLANTIC JACKSONVILLE, NC MCB CAMP LEJEUNE JACKSONVILLE, NC P1338 II MEF SIMULATION/TRAINING CENTER REPLACEMENT SECURITY - FIRST FLOOR PLAN - AREA A	
SCALE:	AS NOTED
EPROJCT NO.:	1500892
CONSTR. CONTR. NO.:	N40085-20-C-0059
NAVFAC DRAWING NO.:	
SHEET	OF
TY11	



SECURITY - FIRST FLOOR PLAN - AREA A
 SCALE: 1/8" = 1'-0"

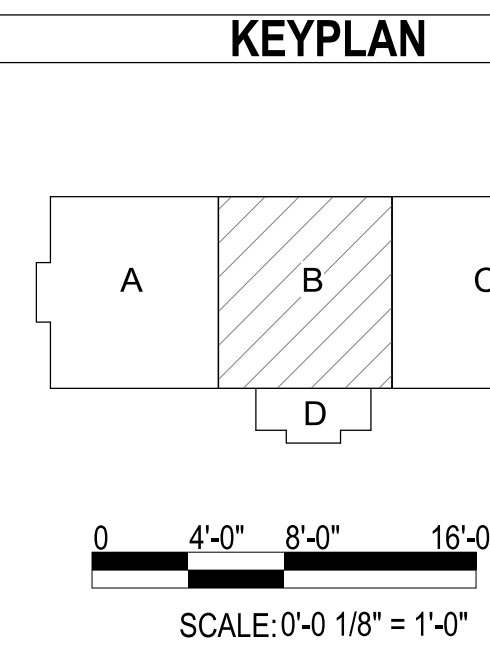
FILE NAME: BIM360/HF PACKAGE 3P1338.MEF SIM CTR-1500892-E-1
 PLOTTED: 5/28/2021 9:27:51 AM




FILE NAME: BIM360/HF PACKAGE 3P11338.MEF SIM CTR-150082-E-N
PLOTTED: 5/28/2021 9:27:52 AM



SECURITY - FIRST FLOOR PLAN - AREA B
SCALE: 1/8" = 1'-0"

GENERAL NOTES
1 SEE SHEET T-001 FOR TELECOMMUNICATIONS NOTES, SYMBOLS, AND ABBREVIATIONS.



APPR	
DATE	
DESCRIPTION	
SYMBOL	
	
	
	
100 AIRSIDE DRIVE MOON TOWNSHIP, PA 15108 APPROVED	
FOR COMMANDER NAVFAC ACTIVITY MARINE CORPS BASE CAMP LEJEUNE	
SATISFACTORY TO DATE DES DRW CHK PM BRANCH MANAGER CHIEF ENGINEER FIRE PROTECTION	
DEPARTMENT OF THE NAVY NAVAL FACILITIES ENGINEERING COMMAND ~ MID-ATLANTIC ROICC FLORENCE CAMP LEJEUNE JACKSONVILLE, NC P1338 II MEF SIMULATION/TRAINING CENTER REPLACEMENT SECURITY - FIRST FLOOR PLAN - AREA B	
SCALE: AS NOTED EPROJECT NO.: 1500892 CONSTR. CONTR. NO.: N40085-20-C-0059 NAVFAC DRAWING NO.: SHEET OF	
TY112	

DP2 SUBMISSION - P1338 BUILDING - PRE-FINAL SUBMISSION

UNCLASSIFIED

UNCLASSIFIED

UNCLASSIFIED

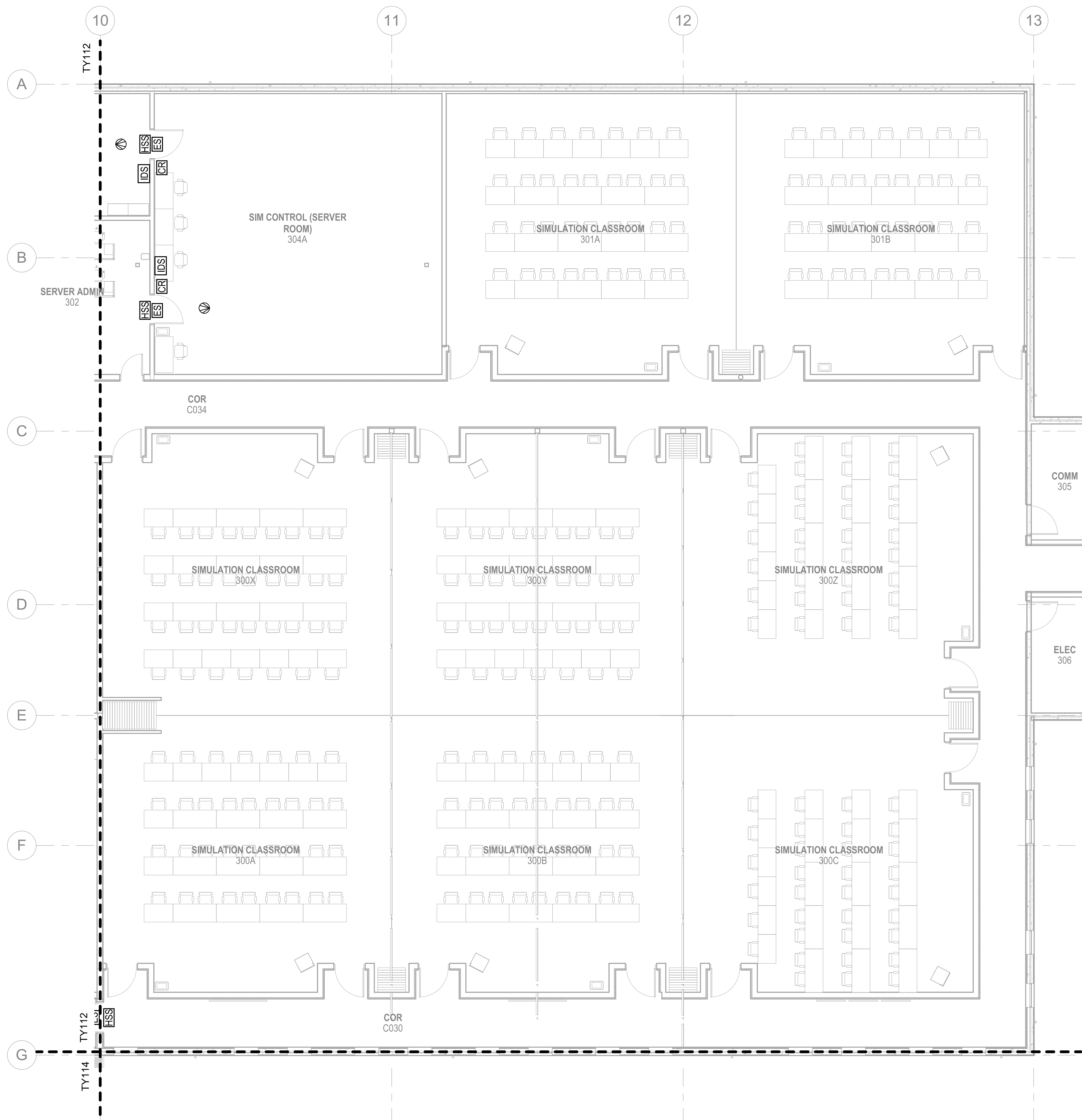
1

2

3

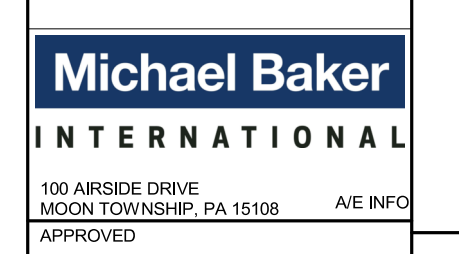
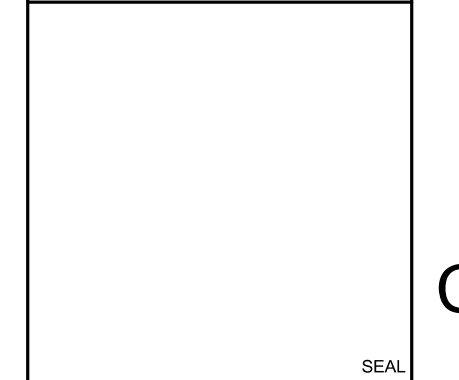
4

5



GENERAL NOTES
 1 SEE SHEET T-001 FOR TELECOMMUNICATIONS NOTES, SYMBOLS, AND ABBREVIATIONS.

SYMBOL	DESCRIPTION	DATE	APPROVED



FOR COMMANDER NAVFAC
 ACTIVITY
 MARINE CORPS BASE
 CAMP LEJEUNE

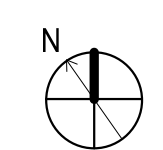
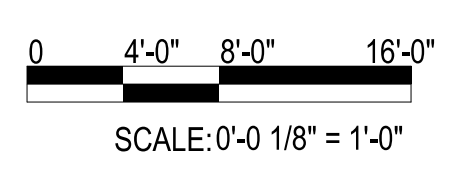
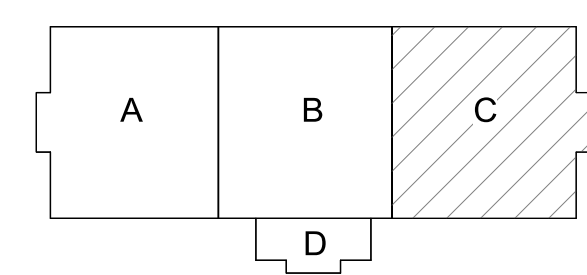
SATISFACTORY TO DATE
 DES DRW CHK
 PM
 BRANCH MANAGER
 CHIEF ENGINEER
 FIRE PROTECTION

DEPARTMENT OF THE NAVY
 NAVAL FACILITIES ENGINEERING COMMAND
 NAVAL FACILITIES ENGINEERING COMMAND ~ MID-ATLANTIC
 JACKSONVILLE, NC
 ROIC CAMP LEJEUNE
 MCB CAMP LEJEUNE
 JACKSONVILLE, NC
 P1338 II MEF SIMULATION/TRAINING CENTER
 REPLACEMENT
 SECURITY - FIRST FLOOR PLAN - AREA C

SCALE: AS NOTED
 EPROJECT NO.: 1590892
 CONSTR. CONTR. NO.: N40085-20-C-0059
 NAVFAC DRAWING NO.:
 SHEET OF

TY113

KEYPLAN



SECURITY - FIRST FLOOR PLAN - AREA C
 SCALE: 1/8" = 1'-0"

PLOTTED: 5/28/2021 9:27:54 AM

FILE NAME: BIM360/HF PACKAGE 3P11338.MEF SIM CTR-1590892-E-N1

DP2 SUBMISSION - P1338 BUILDING - PRE-FINAL SUBMISSION

UNCLASSIFIED

1

2

3

4

5

D

C

B

A

D

C

B

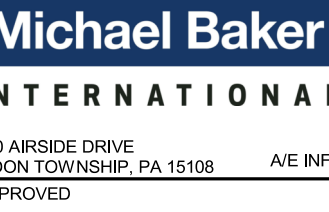
A

GENERAL NOTES

1 SEE SHEET T-001 FOR TELECOMMUNICATIONS NOTES, SYMBOLS, AND ABBREVIATIONS.

KEYNOTES

1 COORDINATE UNDERFLOOR CONDUIT LOCATIONS TO TURNSTILES WITH EQUIPMENT MANUFACTURER. CONDUITS TO STUB UP INTO ENTRY VESTIBULE WORK AREA.



FOR COMMANDER NAVFAC

ACTIVITY
MARINE CORPS BASE
CAMP LEJEUNE

SATISFACTORY TO DATE

DES DRW CHK

PM

BRANCH MANAGER

CHIEF ENGINEER

FIRE PROTECTION

NAVAL FACILITIES ENGINEERING COMMAND
NAVAL FACILITIES ENGINEERING COMMAND ~ MID-ATLANTIC
ROICC FLORENCE CAMP LEJEUNE
MCC CAMP LEJEUNE
JACKSONVILLE, NC
JACKSONVILLE, NC
P1338 II MEF SIMULATION/TRAINING CENTER
REPLACEMENT

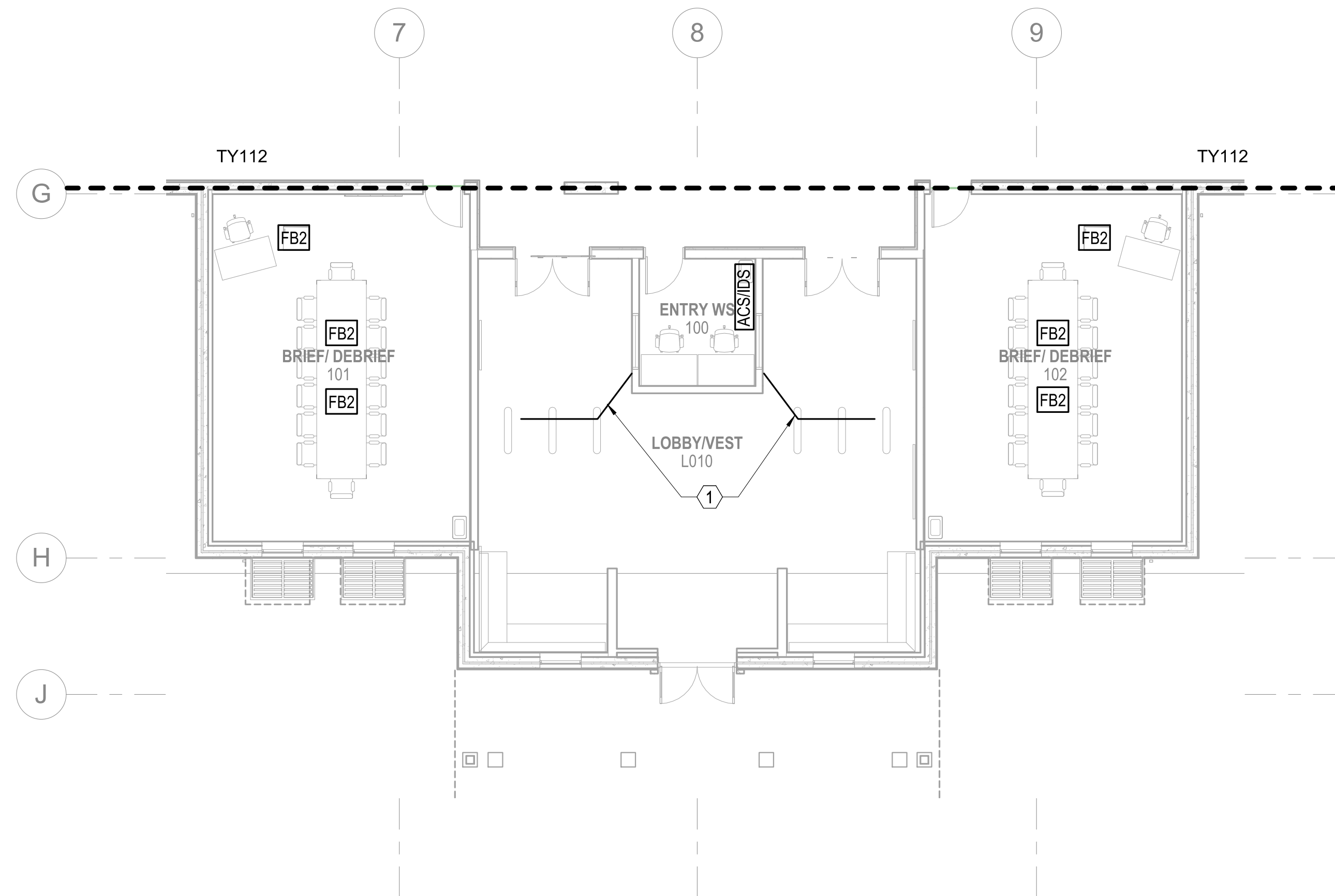
SECURITY - FIRST FLOOR PLAN - AREA D

SCALE: AS NOTED
EPROJCT NO.: 1500892
CONSTR. CONTR. NO.
N40085-20-C-0059
NAVFAC DRAWING NO.

SHEET OF

TY114

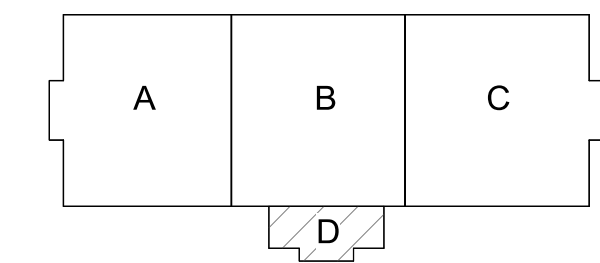
DP2 SUBMISSION - P1338 BUILDING - PRE-FINAL SUBMISSION



SECURITY - FIRST FLOOR PLAN - AREA D

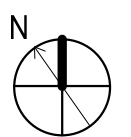
SCALE: 1/8" = 1'-0"

KEYPLAN



0 4'-0" 8'-0" 16'-0"

SCALE: 0'-0 1/8" = 1'-0"



1

2

3

4

5

1

2

3

4

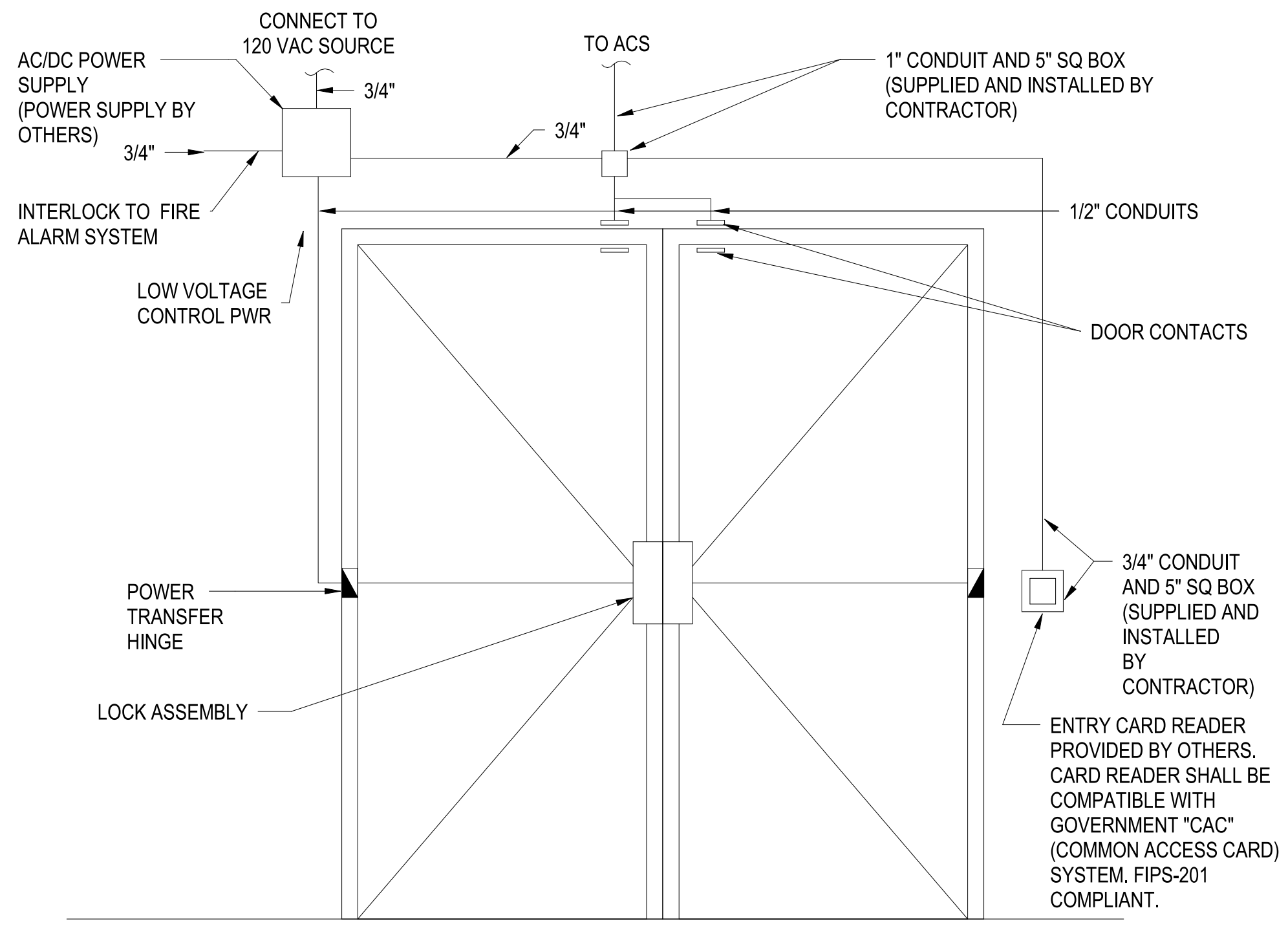
5

D

C

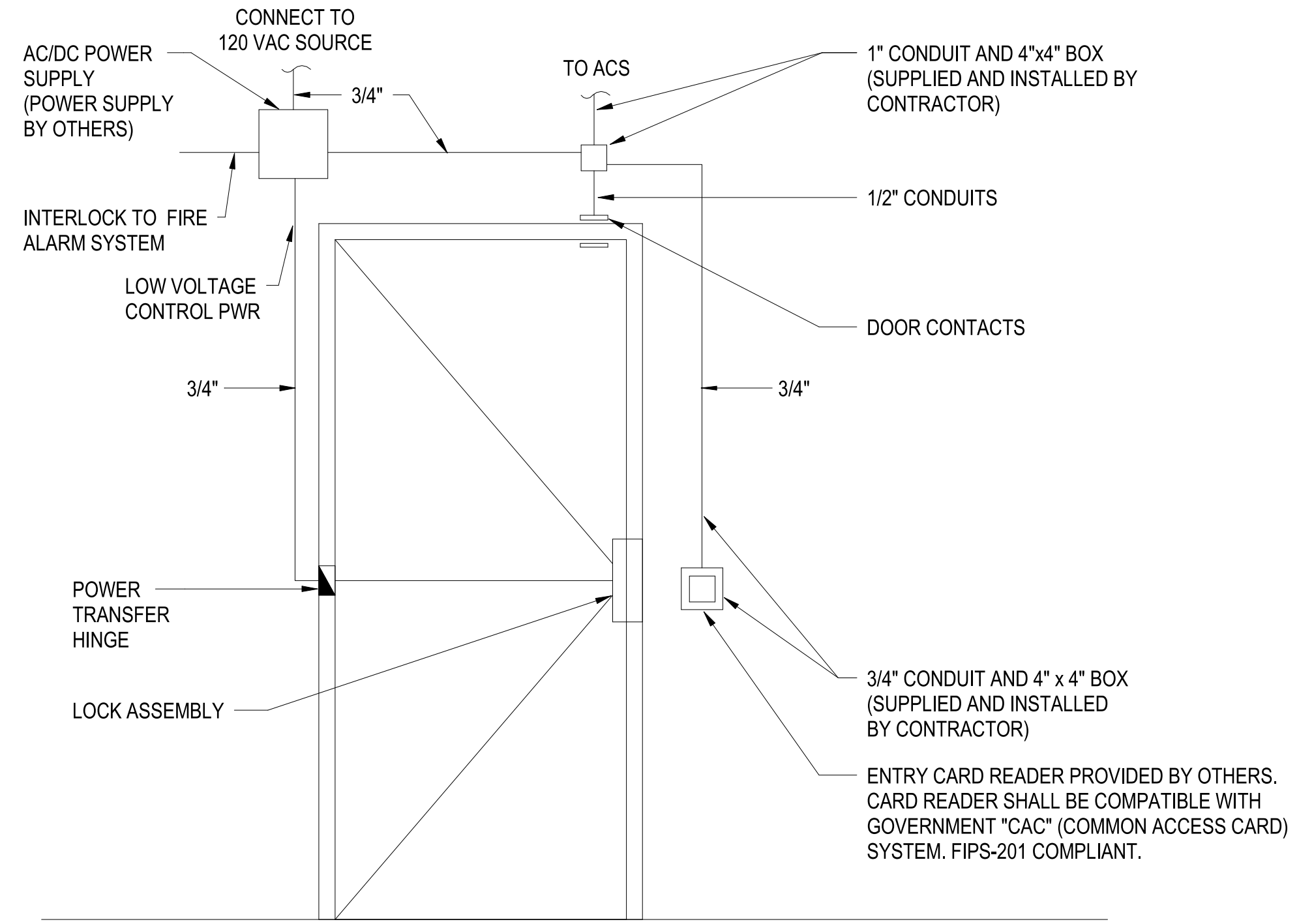
B

A



DOUBLE DOOR ACCESS CONTROLS SYSTEM
SCALE:NTS

C1



SINGLE DOOR ACCESS CONTROLS SYSTEM
SCALE:NTS

C3

PLOTTED: 5/28/2021 9:27:55 AM

FILE NAME: BIM360/HF PACKAGE 3P1338.MEF SIM CTR-1500892.E4




1

2

3

4

5

APPR	
DATE	
SYN	DESCRIPTION
	
	
	
100 AIRSIDE DRIVE MOON TOWNSHIP, PA 15108 A/E/INFC	
APPROVED	
FOR COMMANDER NAVFAC	
ACTIVITY	
MARINE CORPS BASE CAMP LEJEUNE	
SATISFACTORY TO DATE	
DES	CHK
PM	
BRANCH MANAGER	
CHIEF ENGINEER	
FIRE PROTECTION	
DEPARTMENT OF THE NAVY NAVAL FACILITIES ENGINEERING COMMAND NAVAL FACILITIES ENGINEERING COMMAND ~ MID-ATLANTIC JACKSONVILLE, NC ROICC FLORENCE CAMP LEJEUNE MCB CAMP LEJEUNE JACKSONVILLE, NC P1338 II MEF SIMULATION/TRAINING CENTER REPLACEMENT SECURITY - DETAILS	
SCALE:	AS NOTED
PROJECT NO.:	1500892
CONSTR. CONTR. NO.:	N40085-20-C-0059
NAVFAC DRAWING NO.:	
SHEET	OF
TY501	