

1

2

3

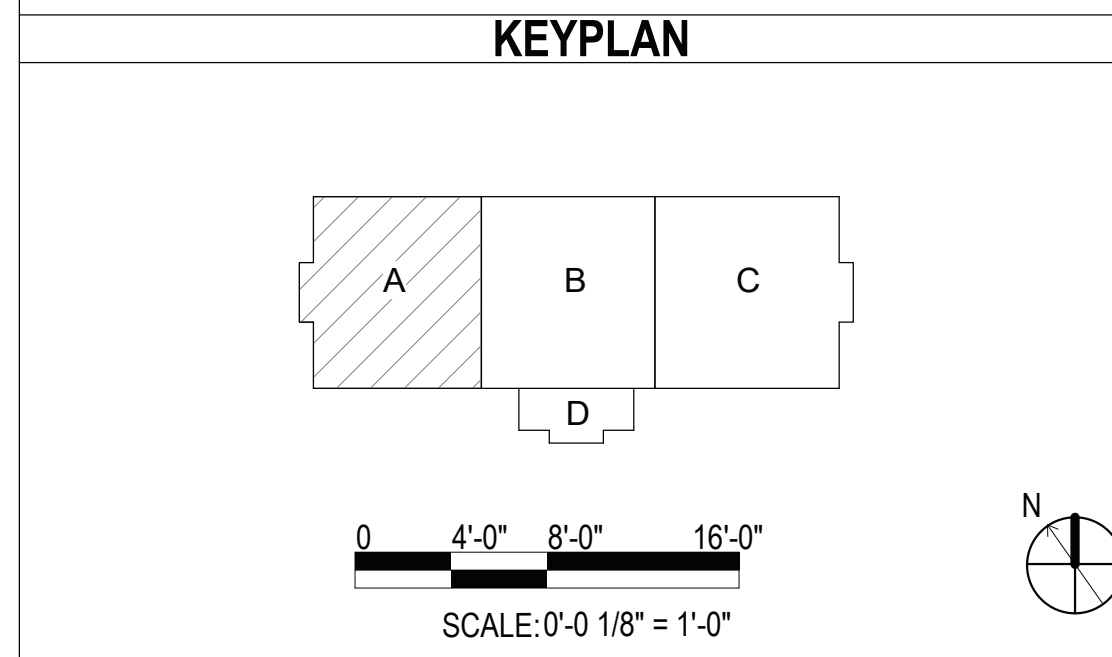
4

5



**GENERAL NOTES**  
 1 SEE SHEET T-001 FOR TELECOMMUNICATIONS NOTES, SYMBOLS, AND ABBREVIATIONS.

APPROVED	DATE	APPR
SYMBOL	DESCRIPTION	SYM
FOR COMMANDER NAVFAC ACTIVITY <b>MARINE CORPS BASE          CAMP LEJEUNE</b> SATISFACTORY TO DATE DES JTE   DRW ETH   CHK JMG PM BRANCH MANAGER CHIEF ENGINEER FIRE PROTECTION		
DEPARTMENT OF THE NAVY NAVAL FACILITIES ENGINEERING COMMAND NAVAL FACILITIES ENGINEERING COMMAND ~ MID-ATLANTIC ROIC FLORENCE CAMP LEJEUNE JACKSONVILLE, NC <b>P1338 II MEF SIMULATION/TRAINING CENTER          REPLACEMENT</b> SECURITY - FIRST FLOOR PLAN - AREA A		
SCALE: AS NOTED EPROJCT NO.: 1500892 CONSTR. CONTR. NO.: N40085-20-C-0059 NAVFAC DRAWING NO.: SHEET OF <b>TY11</b>		

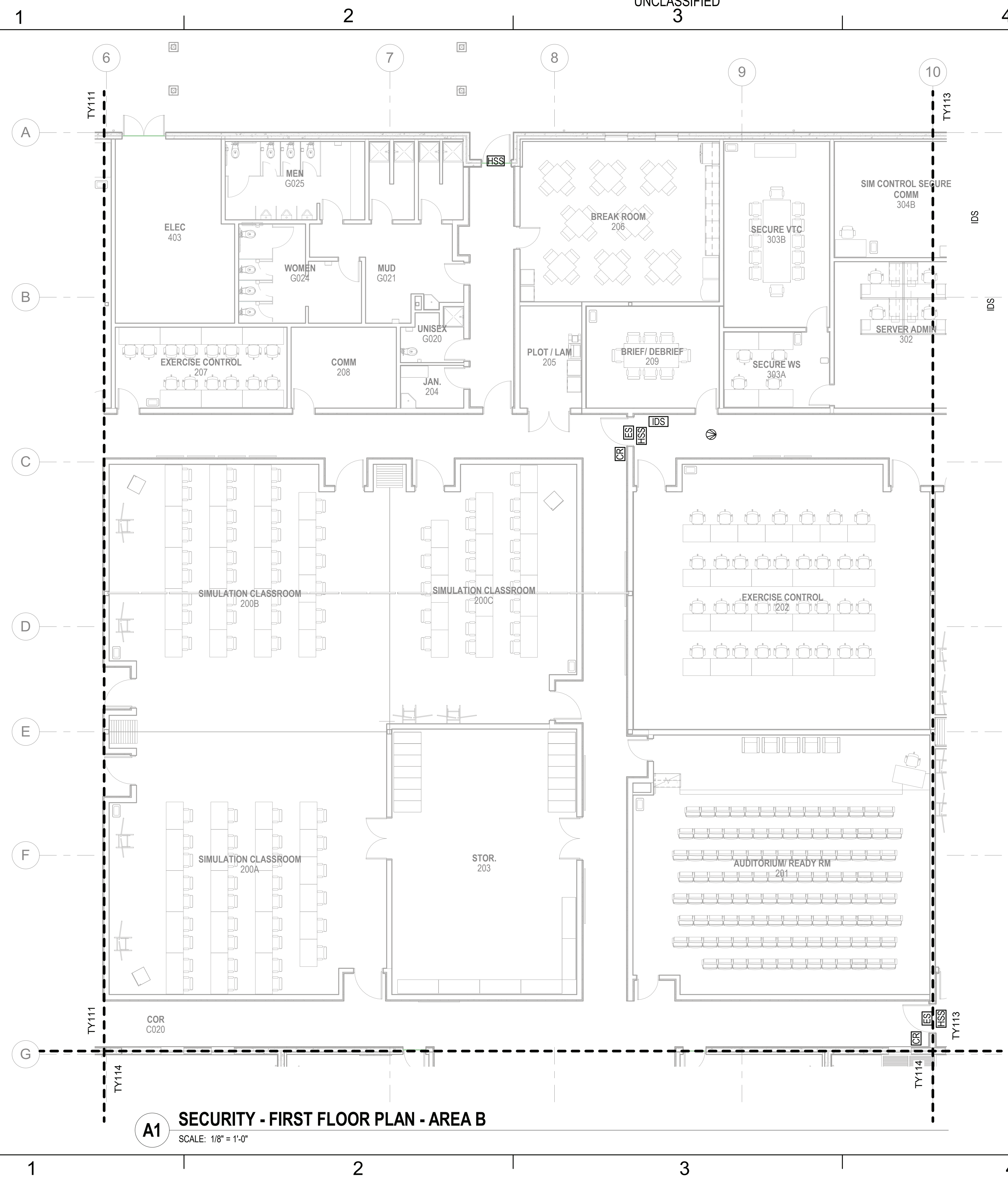


**A1 SECURITY - FIRST FLOOR PLAN - AREA A**  
 SCALE: 1/8" = 1'-0"

FILE NAME: BIM360/HF PACKAGE 3PT1338.MEF SIM CTR-1500892-E-V1  
 PLOTTED: 6/10/2021 9:28:56 AM

UNCLASSIFIED  
 DP2 SUBMISSION - P1338 BUILDING - PRE-FINAL SUBMISSION

FILE NAME: BIM360/IF PACKAGE 3P1338.MEF SIM CTR-150082-E-V1  
PLOTTED: 6/10/2021 9:28:50 AM



**A1 SECURITY - FIRST FLOOR PLAN - AREA B**  
SCALE: 1/8" = 1'-0"

**GENERAL NOTES**

1 SEE SHEET T-001 FOR TELECOMMUNICATIONS NOTES, SYMBOLS, AND ABBREVIATIONS.

SYMBOL	DESCRIPTION	DATE	APPROVED



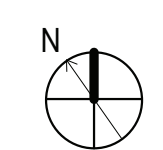
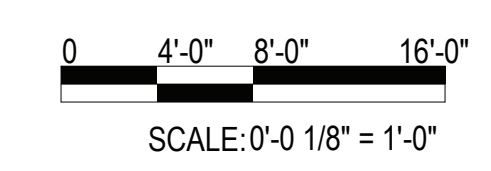
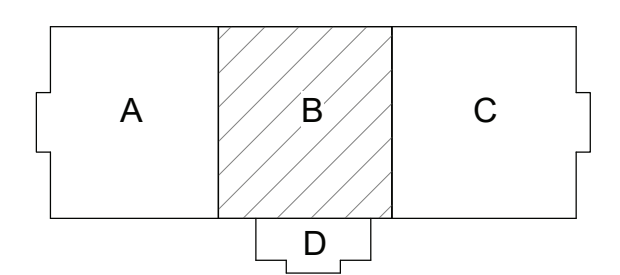
**Michael Baker INTERNATIONAL**  
100 AIRSIDE DRIVE  
MOON TOWNSHIP, PA 15108  
APPROVED

FOR COMMANDER NAVFAC  
ACTIVITY  
**MARINE CORPS BASE CAMP LEJEUNE**  
SATISFACTORY TO DATE  
DES: JTE | DRW: ETH | CHK: JMG  
PM  
BRANCH MANAGER  
CHIEF ENGINEER  
FIRE PROTECTION

DEPARTMENT OF THE NAVY  
NAVAL FACILITIES ENGINEERING COMMAND  
NAVAL FACILITIES ENGINEERING COMMAND ~ MID-ATLANTIC  
ROSC FLORENCE CAMP LEJEUNE  
JACKSONVILLE, NC  
JACKSONVILLE, NC  
**P1338 II MEF SIMULATION/TRAINING CENTER REPLACEMENT**  
SECURITY - FIRST FLOOR PLAN - AREA B

SCALE: AS NOTED  
EPROJCT NO.: 1500892  
CONSTR. CONTR. NO.: N40085-20-C-0059  
NAVFAC DRAWING NO.:  
SHEET OF  
**TY112**

**KEYPLAN**



DP2 SUBMISSION - P1338 BUILDING - PRE-FINAL SUBMISSION

UNCLASSIFIED

UNCLASSIFIED

UNCLASSIFIED

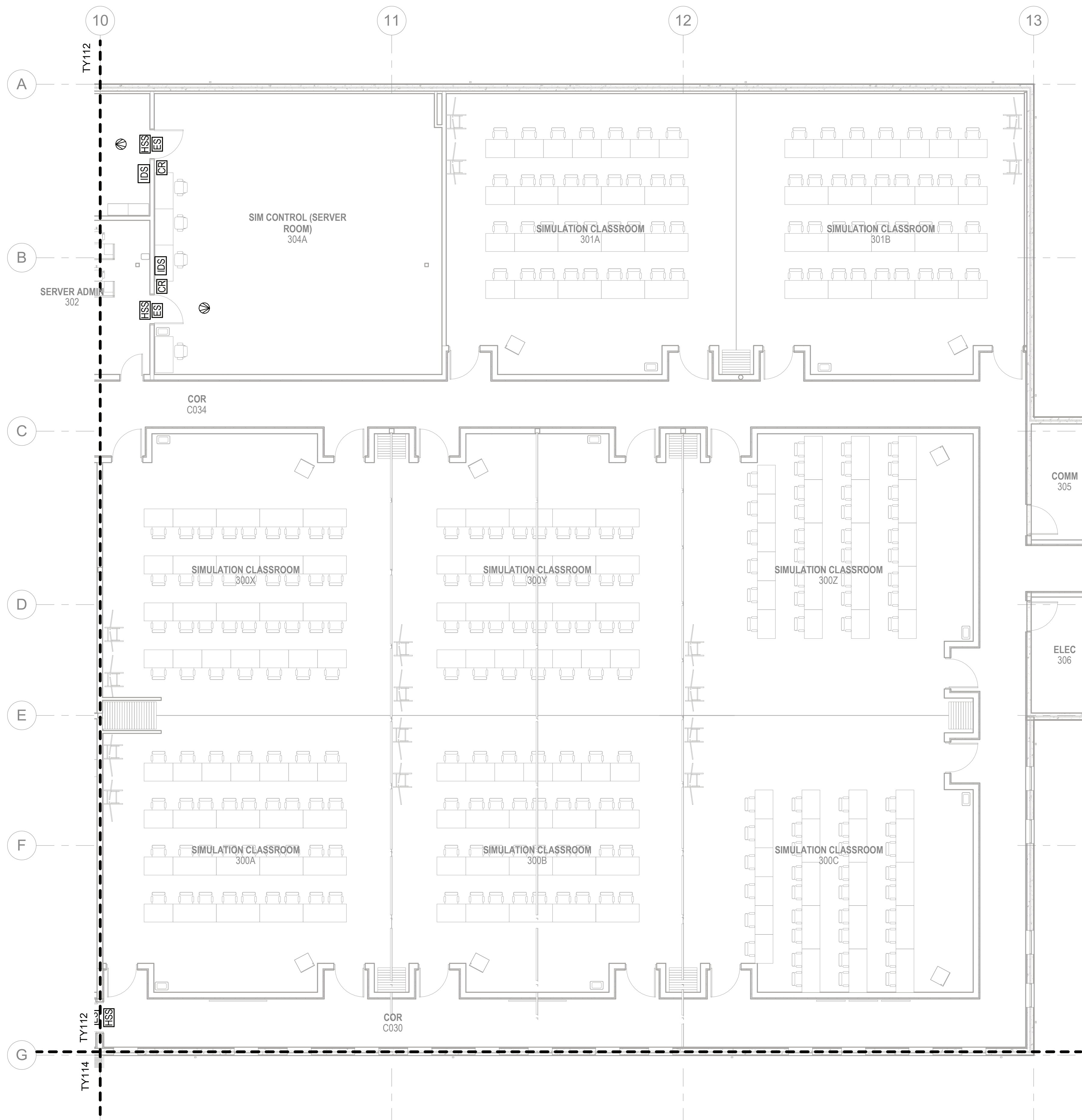
1

2




3

4

5



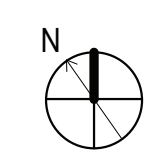
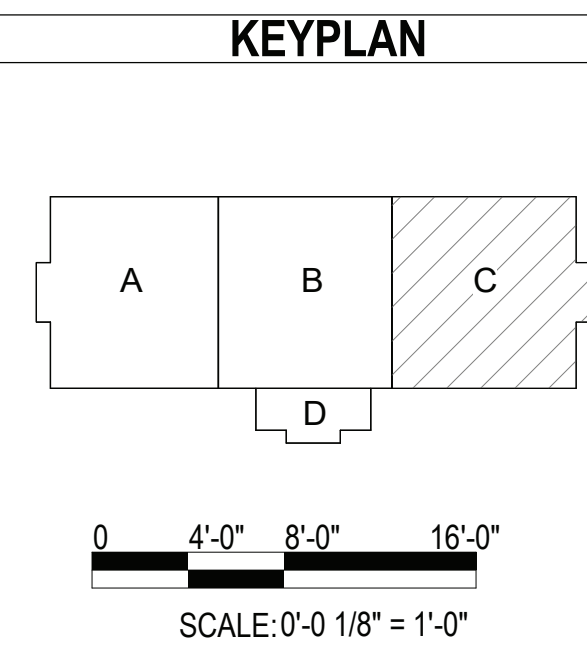
**GENERAL NOTES**  
 1 SEE SHEET T-001 FOR TELECOMMUNICATIONS NOTES, SYMBOLS, AND ABBREVIATIONS.

APPR	
DATE	
SYMBOL	DESCRIPTION
	
	
	
100 AIRSIDE DRIVE MOON TOWNSHIP, PA 15108 APPROVED	
FOR COMMANDER NAVFAC ACTIVITY MARINE CORPS BASE CAMP LEJEUNE	
SATISFACTORY TO DATE DES JTE   DRW ETH   CHK JMG	
PM BRANCH MANAGER CHIEF ENGINEER FIRE PROTECTION	
DEPARTMENT OF THE NAVY NAVAL FACILITIES ENGINEERING COMMAND NAVAL FACILITIES ENGINEERING COMMAND ~ MID-ATLANTIC ROIC FLORENCE CAMP LEJEUNE JACKSONVILLE, NC JACKSONVILLE, NC P1338 II MEF SIMULATION/TRAINING CENTER REPLACEMENT SECURITY - FIRST FLOOR PLAN - AREA C	
SCALE: AS NOTED EPROJECT NO.: 1500892 CONSTR. CONTR. NO.: N40085-20-C-0059 NAVFAC DRAWING NO.: SHEET OF	
<b>TY113</b>	

FILE NAME: BIM\_360/HF PACKAGE 3P1338\_MEF SIM CTR-1500892-E-V1

PLOTTED: 6/10/2021 9:29:01 AM

**A1 SECURITY - FIRST FLOOR PLAN - AREA C**  
 SCALE: 1/8" = 1'-0"



1

2

3

4

5

1

2

3

4

5

D

C

B

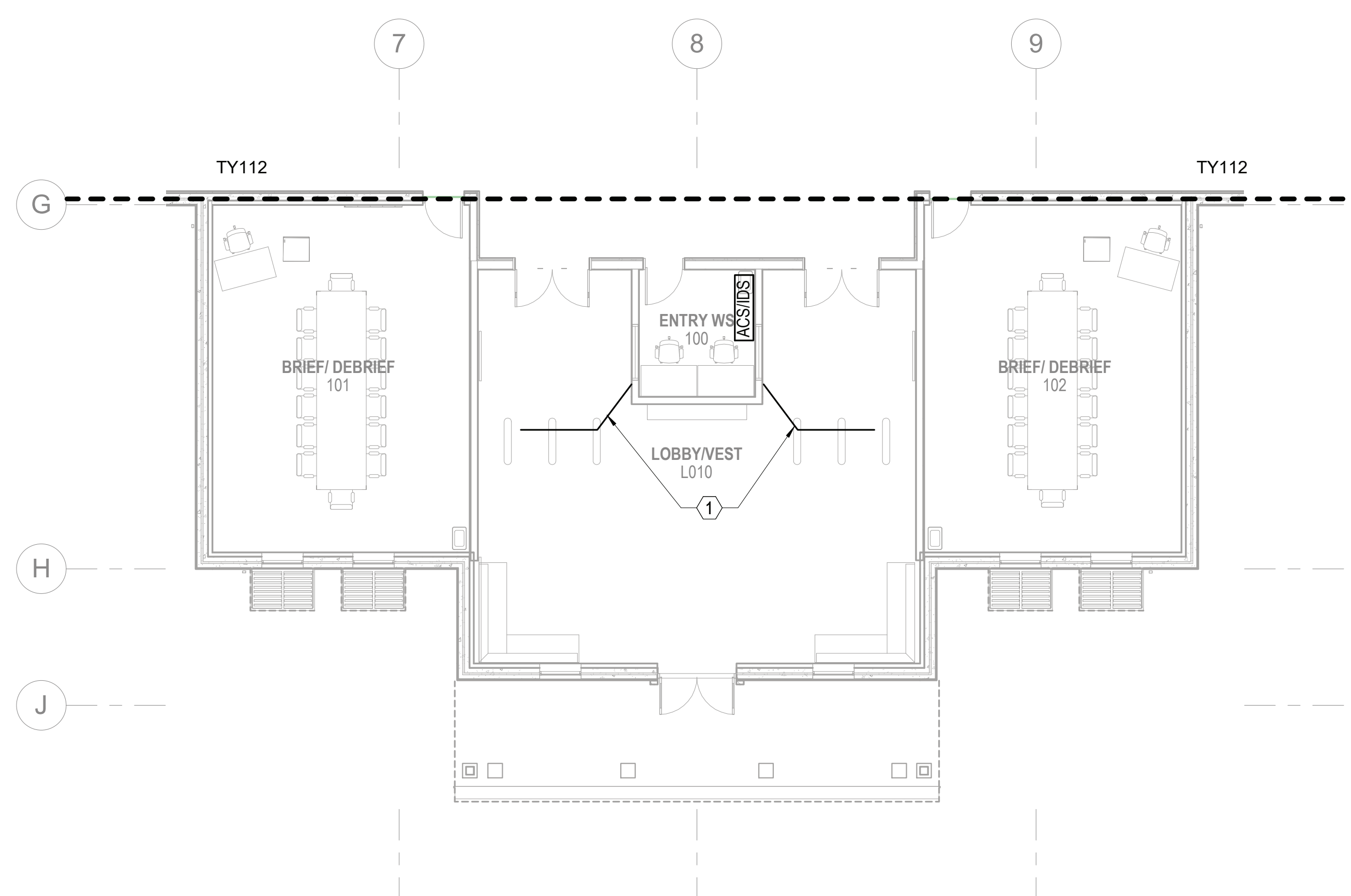
A

D

C

B

A



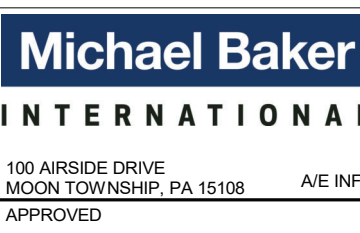
**A1 SECURITY - FIRST FLOOR PLAN - AREA D**  
 SCALE: 1/8" = 1'-0"

GENERAL NOTES

1 SEE SHEET T-001 FOR TELECOMMUNICATIONS NOTES, SYMBOLS, AND ABBREVIATIONS.

KEYNOTES

1 COORDINATE UNDERFLOOR CONDUIT LOCATIONS TO TURNSTILES WITH EQUIPMENT MANUFACTURER. CONDUITS TO STUB UP INTO ENTRY VESTIBULE WORK AREA.

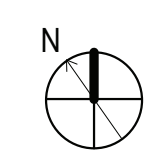
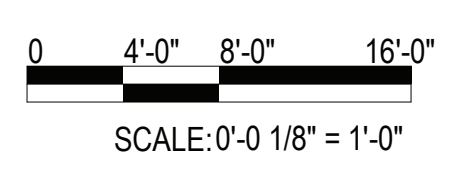
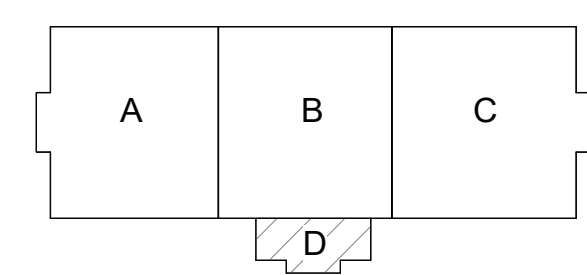


FOR COMMANDER NAVFAC  
 ACTIVITY  
 MARINE CORPS BASE  
 CAMP LEJEUNE  
 SATISFACTORY TO DATE  
 DES JTE | DRW ETH | CHK JMG  
 PM  
 BRANCH MANAGER  
 CHIEF ENGINEER  
 FIRE PROTECTION

DEPARTMENT OF THE NAVY  
 NAVAL FACILITIES ENGINEERING COMMAND  
 NAVAL FACILITIES ENGINEERING COMMAND ~ MID-ATLANTIC  
 ROICC FLORENCE CAMP LEJEUNE  
 MCB CAMP LEJEUNE  
 JACKSONVILLE, NC  
 JACKSONVILLE, NC  
 P1338 II MEF SIMULATION/TRAINING CENTER  
 REPLACEMENT  
 SECURITY - FIRST FLOOR PLAN - AREA D

SCALE: AS NOTED  
 EPROJECT NO.: 1500892  
 CONSTR. CONTR. NO.: N40085-20-C-0059  
 NAVFAC DRAWING NO.:  
 SHEET OF  
**TY114**

KEYPLAN



FILE NAME: BIM360/HF PACKAGE 3P11338.MEF SIM CTR-1500892-E-V1

PLOTTED: 6/10/2021 9:29:04 AM

1

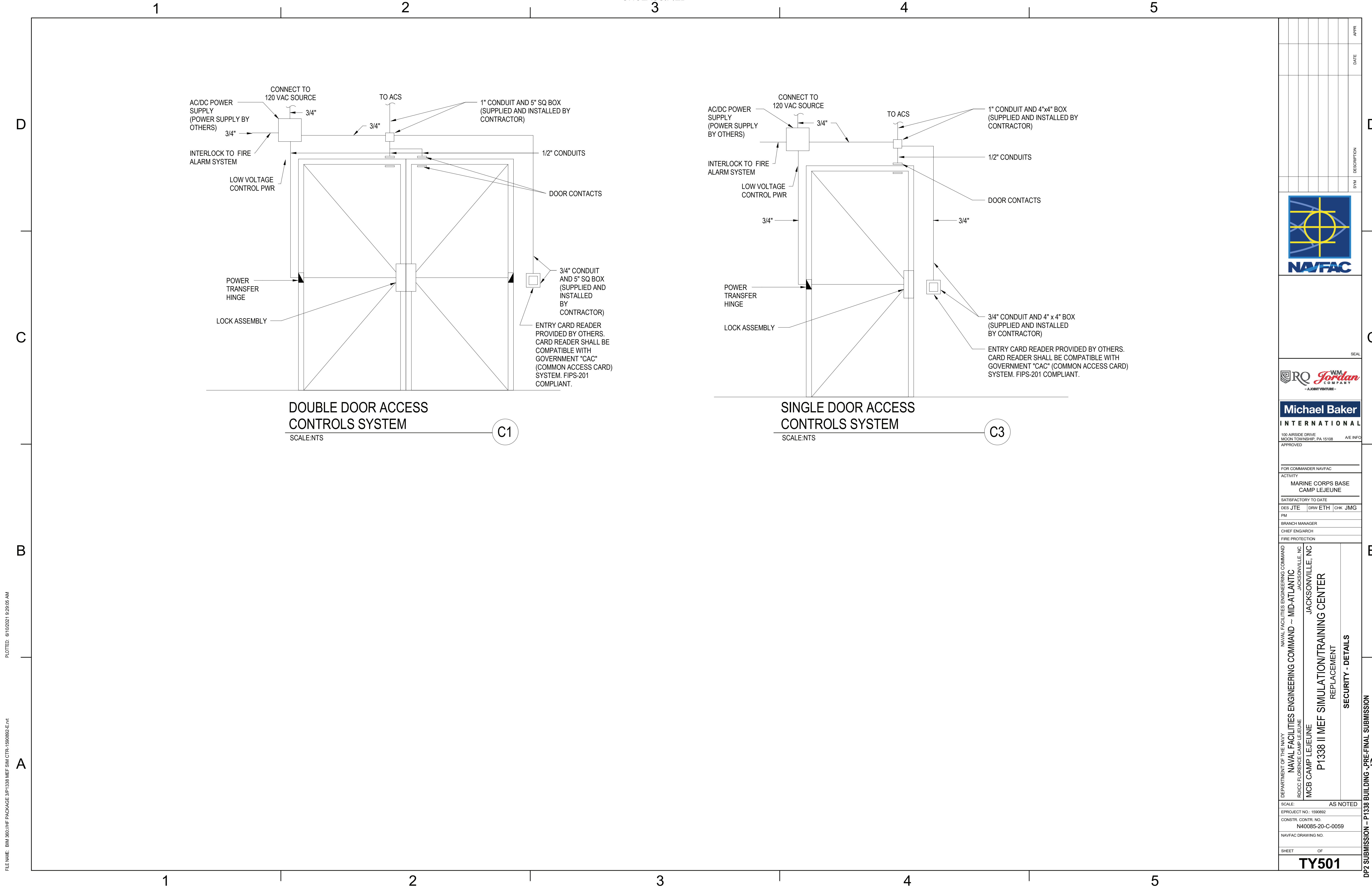
2

3

4

5

FILE NAME: BIM360/HF PACKAGE 3P1338.MEF SIM CTR-150082-E-V1  
 PLOTTED: 6/10/2021 9:29:05 AM



**DOUBLE DOOR ACCESS CONTROLS SYSTEM**




SCALE: NTS

C1

**SINGLE DOOR ACCESS CONTROLS SYSTEM**

SCALE: NTS

C3

APPR	
DATE	
SYMBOL	
DESCRIPTION	
	
	
	
100 AIRSIDE DRIVE MOON TOWNSHIP, PA 15108 APPROVED	
FOR COMMANDER NAVFAC	
ACTIVITY MARINE CORPS BASE CAMP LEJEUNE	
SATISFACTORY TO DATE DES JTE    DRW ETH    CHK JMG	
PM	
BRANCH MANAGER	
CHIEF ENGINEER	
FIRE PROTECTION	
DEPARTMENT OF THE NAVY NAVAL FACILITIES ENGINEERING COMMAND NAVAL FACILITIES ENGINEERING COMMAND ~ MID-ATLANTIC ROICC FLORENCE CAMP LEJEUNE JACKSONVILLE, NC JACKSONVILLE, NC MCB CAMP LEJEUNE P1338 II MEF SIMULATION/TRAINING CENTER REPLACEMENT SECURITY - DETAILS	
SCALE: AS NOTED EPROJECT NO.: 150082 CONSTR. CONTR. NO.: N40085-20-C-0059 NAVFAC DRAWING NO.: SHEET OF	
<b>TY501</b>	

UNCLASSIFIED

DP2 SUBMISSION - P1338 BUILDING - PRE-FINAL SUBMISSION

1

2

3

4

5

1

2

3

4

5

UNCLASSIFIED