

1. PROJECT NAME
P1338 MEF SIMULATION TRAINING BUILDING, MARINE CORPS BASE CAMP LEJEUNE, NORTH CAROLINA

2. PROJECT DESCRIPTION
THE MEF SIMULATION TRAINING BUILDING CONSISTS TRAINING AREAS, ADMINISTRATIVE OFFICES AND SUPPORTING MECHANICAL, ELECTRICAL AND COMMUNICATION SPACES.

THE FACILITY HAS BEEN ANALYZED FOR LIFE SAFETY AND FIRE PROTECTION REQUIREMENTS USING THE CODES AND STANDARDS LISTED BELOW. THE UNIFIED FACILITIES CRITERIA (UFC) APPLIES TO THE MILITARY DEPARTMENTS, THE DEFENSE AGENCIES, AND THE DOD FIELD ACTIVITIES WHICH PROVIDES TECHNICAL CRITERIA FOR NEW MILITARY CONSTRUCTION. BASED ON UFC 1-200-01 CHAPTER 2 - MODIFICATIONS TO THE INTERNATIONAL BUILDING CODE (IBC) AND UFC 3-600-01, THE IBC WILL BE USED FOR FIRE RESISTANCE REQUIREMENTS, ALLOWABLE FLOOR AREA, BUILDING HEIGHT LIMITATIONS, BUILDING SEPARATION DISTANCE REQUIREMENTS, BUILDING CONSTRUCTION TYPE, AND OCCUPANCY SEPARATION REQUIREMENTS EXCEPT AS MODIFIED BY UFC 3-600-01. NFPA 101 WILL BE USED FOR BUILDING CONSTRUCTION RELATED TO EGRESS AND SAFETY TO LIFE AS WELL AS FIRE RESISTANCE RATINGS OF NON-BEARING PARTITIONS. IF ANY CONFLICTS OCCUR BETWEEN NFPA 101 AND IBC, RELATED TO FIRE RESISTANCE RATING, NFPA 101 WILL TAKE PRECEDENCE AND APPLICABLE CRITERIA CONTAINED IN UFC 3-600-01. OCCUPANCY DEFINITIONS OF NFPA 101 WILL BE USED TO DETERMINE MEANS OF EGRESS REQUIREMENTS.

- 3. APPLICABLE CODES AND STANDARDS
• IBC - 2018 EDITION - INTERNATIONAL BUILDING CODE
• NFPA 10 - 2018 EDITION - STANDARD FOR PORTABLE FIRE EXTINGUISHERS
• NFPA 13 - 2019 EDITION - STANDARD FOR INSTALLATION OF SPRINKLER SYSTEMS
• NFPA 70 - 2020 EDITION - NATIONAL ELECTRICAL CODE
• NFPA 72 - 2019 EDITION - NATIONAL FIRE ALARM AND SIGNALING CODE
• NFPA 90A - 2018 EDITION - STANDARD FOR THE INSTALLATION OF AIR-CONDITIONING & VENTILATING SYSTEMS
• NFPA 101 - 2018 EDITION - LIFE SAFETY CODE
• UFC 1-200-01 - GENERAL BUILDING REQUIREMENTS, 8 OCTOBER 2019
• UFC 3-600-01 - FIRE PROTECTION ENGINEERING FOR FACILITIES, 8 AUGUST 2016 WITH CHANGE 4, 7 FEBRUARY 2020
• UFC 4-021-01 - DESIGN AND O&M: MASS NOTIFICATION SYSTEMS, 9 APRIL 2008 WITH CHANGE 1, JANUARY 2010
• FC 1-300-09N - NAVY AND MARINE CORPS DESIGN PROCEDURES, 1 MAY 2014 WITH CHANGE 4, 14 JUNE 2018

- 4. OCCUPANCY CLASSIFICATION
IBC BUSINESS B (IBC - SECTION 304) NFPA CHAPTER 38: BUSINESS
IBC FACTORY, A-3 (IBC -SECTION 303) NFPA CHAPTER 12: NEW ASSEMBLY OCCUPANCIES

- 5. CONSTRUCTION TYPE
IBC 602.2, TABLE 503 TYPE IIB

6. AREA AND HEIGHT LIMITATIONS (IBC TABLE 504.3, TABLE 504.4, AND TABLE 506.2, AND SECTION 508.4.2)

Table with 3 columns: OCCUPANCY, ALLOWABLE AREA FOR A SINGLE STORY SPRINKLERED BUILDING (SQ. FT) WITH INCREASE FOR FRONTAGE, ACTUAL FIRST FLOOR TOTAL AREA (SQ. FT)

THE BUILDING SHALL BE CLASSIFIED AS SEPARATED, MIXED USE OCCUPANCY.

ALLOWABLE BUILDING HEIGHT: 75 FT., 3 STORIES
ACTUAL BUILDING HEIGHT: 32 FT., 1 STORIES

7. FIRE RESISTIVE REQUIREMENTS (IBC TABLES 601 AND 602)

- PRIMARY STRUCTURAL FRAME 0 HOUR RATING
EXTERIOR BEARING WALLS* 0 HOUR RATING
EXTERIOR BEARING WALLS 0 HOUR RATING
EXTERIOR NON-BEARING WALLS AND PARTITIONS 0 HOUR RATING
INTERIOR NON-BEARING WALLS AND PARTITIONS 0 HOUR RATING
FLOOR CONSTRUCTION AND SECONDARY MEMBERS 0 HOUR RATING
ROOF CONSTRUCTION AND SECONDARY MEMBERS 0 HOUR RATING

*TAKES INTO ACCOUNT THE FIRE SEPARATION DISTANCE REQUIREMENT OF IBC TABLE 602. THE FIRE SEPARATION DISTANCE IS GREATER THAN 30 FEET. WHERE DISTANCES ARE LESS THAN 30 FEET, TABLE 602 REQUIREMENTS SHALL APPLY.

8. PROTECTION FROM HAZARDS (NFPA 101 AND UFC 3-600-01)

PROTECTION FROM ANY AREA HAVING A DEGREE OF HAZARD GREATER THAN THAT NORMAL TO THE GENERAL OCCUPANCY OF THE BUILDING, SUCH AS AREAS USED FOR GENERAL STORAGE, BOILER OR FURNACE ROOMS, OR MAINTENANCE SHOPS SHALL BE PROTECTED IN ACCORDANCE WITH NFPA 101 SECTION 8.7.

9. OPENING PROTECTION AND PENETRATION REQUIREMENTS (NFPA 101 CHAPTER 8)

JOINTS MADE WITHIN OR AT THE PERIMETER OF FIRE BARRIERS SHALL BE PROTECTED WITH A JOINT SYSTEM THAT IS CAPABLE OF LIMITING THE TRANSFER OF FIRE. JOINTS MADE WITHIN OR BETWEEN FIRE BARRIERS SHALL BE PROTECTED WITH A FIRE-TIGHT JOINT SYSTEM THAT IS CAPABLE OF LIMITING THE TRANSFER OF FIRE. JOINTS MADE WITHIN OR BETWEEN FIRE RESISTANCE-RATED ASSEMBLIES SHALL BE PROTECTED WITH A JOINT SYSTEM TESTED IN ACCORDANCE WITH ASTM E1966 OR ANSI / UL 2079.

PENETRATIONS AND JOINTS THROUGH SMOKE PARTITIONS SHALL BE PROTECTED BY A SYSTEM THAT IS CAPABLE OF LIMITING THE TRANSFER OF SMOKE.

NFPA 101 TABLE 8.3.3.2.2

Table with 3 columns: COMPONENTS, WALLS AND PARTITIONS (HOUR), FIRE DOOR ASSEMBLIES (HOUR)

FIREBLOCKING AND DRAFTSTOPPING ARE NOT REQUIRED IN NON-COMBUSTIBLE CONSTRUCTION (IBC 718.2, 718.3, AND 718.4)

10. STRUCTURAL ELEMENTS SUPPORTING FIRE BARRIERS AND EXIT COMPONENTS (NFPA 101, CHAPTER 8)

STRUCTURAL ELEMENTS THAT SUPPORT FIRE BARRIERS WILL BE PERMITTED TO HAVE ONLY THE FIRE RESISTANCE RATING REQUIRED FOR THE CONSTRUCTION CLASSIFICATION OF THE BUILDING, PROVIDED THAT BOTH OF THE FOLLOWING CRITERIA ARE MET:
• SUCH STRUCTURAL ELEMENTS SUPPORT NON-BEARING WALL OR PARTITION ASSEMBLIES THAT HAVE A REQUIRED 1-HOUR FIRE RESISTANCE RATING OR LESS.
• SUCH STRUCTURAL ELEMENTS DO NOT SERVE AS EXIT ENCLOSURES OR PROTECTION FOR VERTICAL OPENINGS.

11. MARKING AND IDENTIFICATION OF FIRE BARRIER AND SMOKE PARTITION (IBC 703.7)

FIRE BARRIERS AND SMOKE PARTITIONS SHALL BE EFFECTIVELY AND PERMANENTLY IDENTIFIED WITH SIGNS OF STENCILING. SUCH IDENTIFICATION SHALL:
• BE LOCATED IN ACCESSIBLE CONCEALED FLOOR, CEILING, OR ATTIC SPACE.
• BE LOCATED WITHIN 15 FEET OF THE END OF EACH WALL AND AT INTERVALS NOT EXCEEDING 10 FEET MEASURED HORIZONTALLY ALONG THE WALL OR PARTITIONS.
• INCLUDE LETTERING NOT LESS THAN 3 INCHES IN HEIGHT WITH A MINIMUM 3/8 INCH STROKE IN A CONTRASTING COLOR INCORPORATING THE SUGGESTED WORDING "FIRE BARRIER AND/OR SMOKE PARTITION - PROTECT ALL OPENINGS" OR OTHER WORDING.

12. INTERIOR FINISHES CLASSIFICATION LIMITS

NFPA 101, TABLE A.10.2.2

Table with 3 columns: OCCUPANCY, CORRIDORS, ROOMS AND ENCLOSED SPACES

13. INSULATION REQUIREMENTS (UFC 3-600-01, CHAPTER 8)

THERMAL AND ACOUSTICAL INSULATION WITH A FLAME SPREAD (FS) RATING NOT HIGHER THAN 75, AND A SMOKE DEVELOPED (SD) RATING NOT HIGHER THAN 150 SHALL BE USED WHEN TESTED IN ACCORDANCE WITH ASTM E84 UNLESS EXCEPTIONS OF SECTION 8-1 ARE MET.

14. FIRE AND SMOKE DAMPERS (NFPA 90A)

AIR-TRANSFER OPENINGS IN A FIRE-RATED ASSEMBLY SHALL BE PROVIDED WITH APPROVED FIRE DAMPERS.

AIR-TRANSFER OPENINGS IN SMOKE PARTITIONS SHALL BE PROVIDED WITH APPROVED SMOKE DAMPERS.

15. MEANS OF EGRESS

THE FLOOR PLAN LAYOUT AND CORRIDORS WILL BE DESIGNED TO MEET NFPA 101 REQUIREMENTS FOR FIRE AND LIFE SAFETY AND OCCUPANT EGRESS.

EXITS AND STAIRS SHALL MEET NFPA 101 SECTION 7.3.3. ALL DOORS AND CORRIDORS ARE TO BE SIZED AT 0.2 INCHES PER OCCUPANT, NOT LESS THAN 32 INCHES, USING THE EXIT. STAIRS WILL BE SIZED AT 0.3 INCHES PER OCCUPANT, NOT LESS THAN 44 INCHES, USING THE STAIR.

Table with 4 columns: OCCUPANCY, DEAD END (FT), COMMON PATH (FT), TRAVEL DISTANCE (FT)

16. OCCUPANT LOAD AND EGRESS CAPACITY CALCULATION

OCCUPANT LOAD - FIRST FLOOR BUSINESS

Table with 4 columns: USE, OCCUPANT LOAD FACTOR (SQ. FT/PERSON), AREA (SQ. FT.), OCCUPANT LOAD

OCCUPANT LOAD - ASSEMBLY OCCUPANCY

Table with 4 columns: USE, OCCUPANT LOAD FACTOR (SQ. FT/PERSON), AREA (SQ. FT.), OCCUPANT LOAD

Table with 4 columns: EXITS, MINIMUM CLEAR WIDTH (INCHES), ACTUAL CLEAR WIDTH (INCHES), OCCUPANT CAPACITY

Table with 4 columns: EXITS, MINIMUM CLEAR WIDTH (INCHES), ACTUAL CLEAR WIDTH (INCHES), OCCUPANT CAPACITY

17. DISCHARGE FROM EXITS (NFPA 101, 7.7)

BUILDING EXITS SHALL TERMINATE DIRECTLY AT A PUBLIC WAY IN ACCORDANCE WITH NFPA 101, SECTION 7.7. STAIRS STB-1 ARE PERMITTED TO DISCHARGE TO THE INTERIOR IN ACCORDANCE WITH NFPA 101 SECTION 7.7.2.

18. ILLUMINATION OF MEANS OF EGRESS (NFPA 101, 7.8)

MEANS OF EGRESS SHALL BE ILLUMINATED IN ACCORDANCE WITH NFPA 101 SECTION 7.8.

19. EMERGENCY LIGHTING (NFPA 101, 7.9)

EMERGENCY LIGHTING SHALL BE PROVIDED IN ACCORDANCE WITH SECTION 7.9.

20. MARKINGS OF MEANS OF EGRESS (NFPA 101, 7.10)

MEANS OF EGRESS SHALL HAVE SIGNS IN ACCORDANCE WITH SECTION 7.10.

21. PORTABLE FIRE EXTINGUISHERS (NFPA 10)

FIRE EXTINGUISHER AND CABINETS SHALL BE LOCATED IN ACCORDANCE WITH NFPA 10. IN FINISHED AREAS, THE FIRE EXTINGUISHER CABINETS SHALL BE FLUSH MOUNT CABINETS.

22. FIRE DEPARTMENT ACCESS (UFC 3-600-01)

FIRE DEPARTMENT ACCESS SHALL BE PROVIDED IN ACCORDANCE WITH UFC 3-600-01 SECTION 9-1. FIRE DEPARTMENT ACCESS ROADS SHALL BE NO LESS THAN 20 FEET UNOBSTRUCTED AND DESIGNED FOR THE WEIGHT OF APPARATUS.

23. AUTOMATIC SPRINKLERS AND OTHER EXTINGUISHING EQUIPMENT (UFC 3-600-01 AND NFPA 13)

THE ENTIRE BUILDING SHALL BE PROTECTED THROUGHOUT WITH A HYDRAULICALLY CALCULATED AUTOMATIC WET-PIPE SPRINKLER SYSTEM. DESIGN DENSITIES SHALL BE IN ACCORDANCE WITH UFC 3-600-01 AND NFPA 13.

24. FIRE ALARM AND MASS NOTIFICATION SYSTEMS (UFC 3-600-01, UFC 4-021-01, AND NFPA 72)

FIRE ALARM AND MASS NOTIFICATION WILL BE PROVIDED IN ACCORDANCE WITH UFC 3-600-01, UFC 4-021-01 AND NFPA 72. THE SYSTEM SHALL CONSIST OF MANUAL PULL STATIONS, STROBES, SPEAKERS, SPRINKLER FLOW AND VALVE TAMPER SUPERVISION, AND SMOKE DETECTORS WITHIN THE HVAC SYSTEMS AS REQUIRED BY NFPA 90A.

25. ACCESSIBILITY REQUIREMENTS

THE BUILDING SHALL BE ACCESSIBLE AND CONFORM TO ABA ACCESSIBILITY STANDARD FOR DEPARTMENT OF DEFENSE FACILITIES AS ADOPTED BY THE DEPUTY SECRETARY OF DEFENSE IN LIEU OF IBC CHAPTER 11 PER UFC 1-200-01.

26. ANTI-TERRORISM AND FORCE PROTECTION REQUIREMENTS (AT/FP) (UFC 4-010-01 SECTION B-4.3)

AN EMERGENCY SHUTOFF SWITCH IN THE HVAC CONTROL SYSTEM CAPABLE OF IMMEDIATE SHUT DOWN OF THE AIR DISTRIBUTION SYSTEM THROUGHOUT THE BUILDING.

PLOTTED: 5/28/2021 2:08:16 PM

FILE NAME: BIM_360/HF PACKAGE 3P1338_MEF_SIM_CTR-1590892-F.dwg

Vertical sidebar containing logos (NAVAC, Jordan Company, Michael Baker International), project title (P1338 II MEF SIMULATION/TRAINING CENTER REPLACEMENT), and drawing information (SCALE: AS NOTED, SHEET: G-100).

D

C

B

A

D

C

B

A

UNCLASSIFIED

DP2 SUBMISSION - P1338 BUILDING -PRE-FINAL SUBMISSION

1

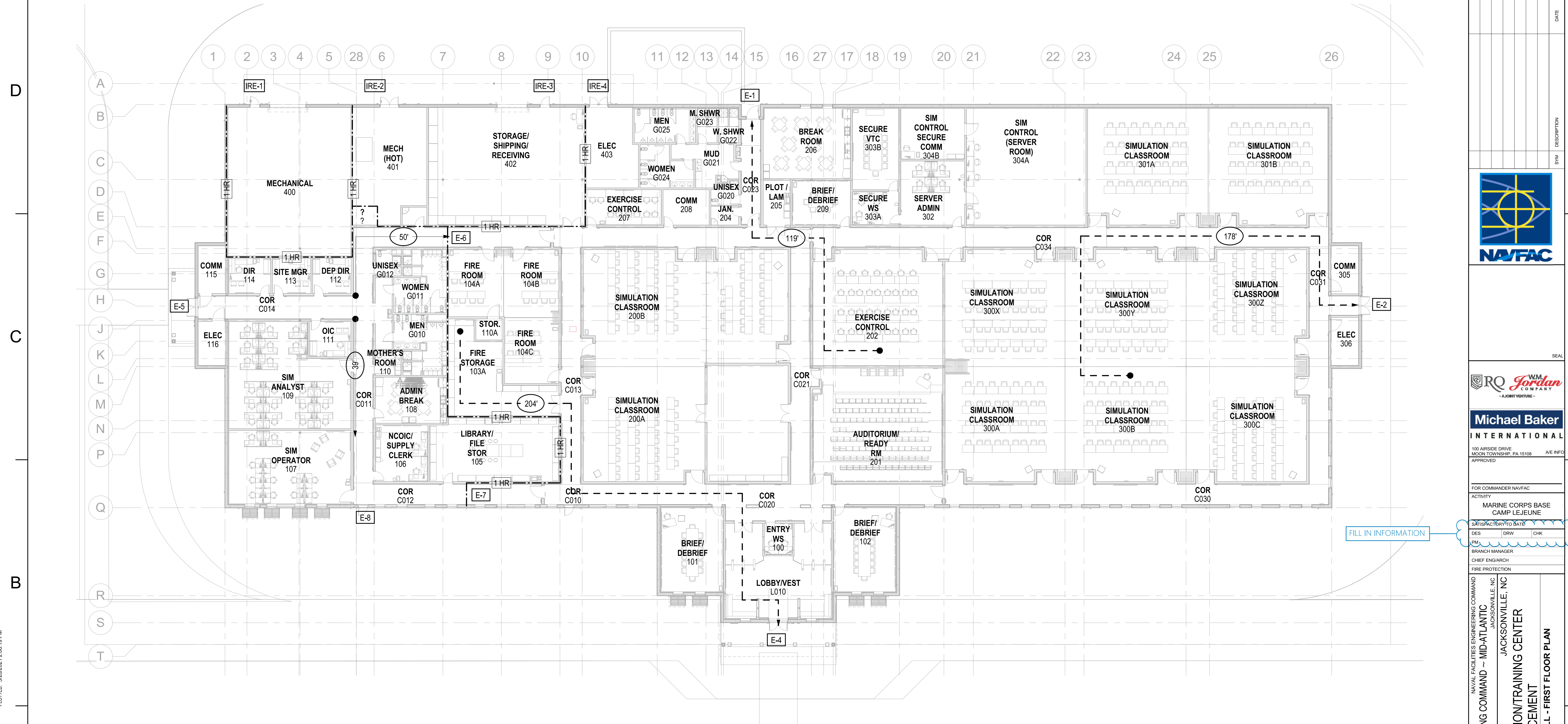
2

3

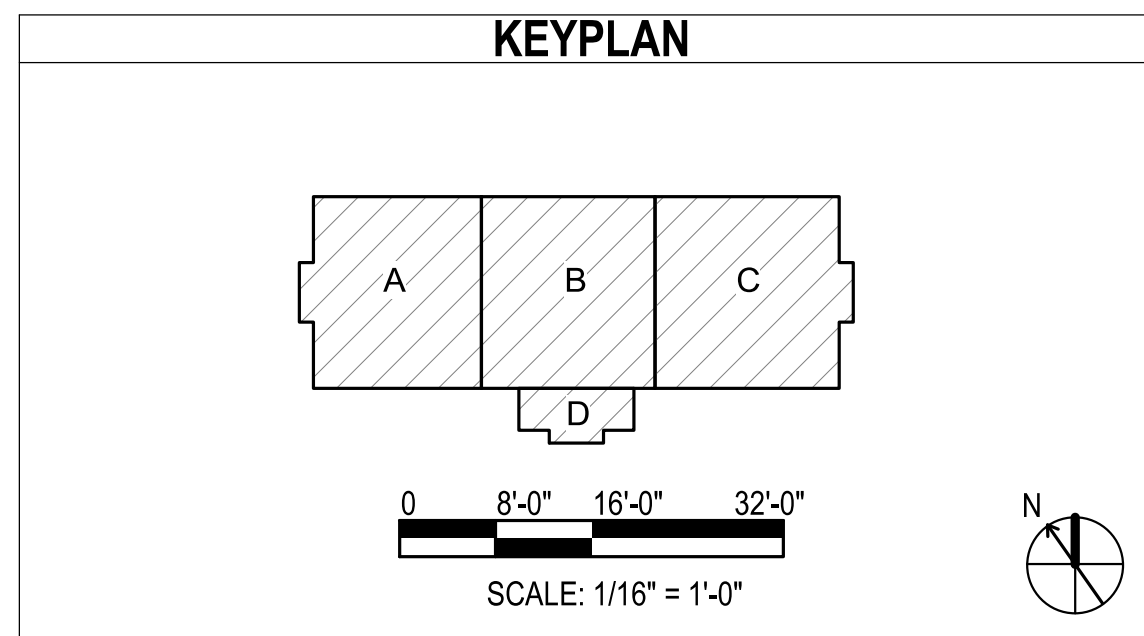
4

5

UNCLASSIFIED





LIFE SAFETY - OVERALL - FIRST FLOOR PLAN
 SCALE: 1/16" = 1'-0"



PLOTTED: 5/28/2021 2:08:10 PM

FILE NAME: BIM360/HF PACKAGE 3P11338.MEF SIM CTR-1500892-F-01

APPROVED	DATE	APPR
SYMBOL	DESCRIPTION	SYMBOL
		
		
Michael Baker International 100 AIRSIDE DRIVE MOON TOWNSHIP, PA 15108 APPROVED		
FOR COMMANDER NAVFAC		
ACTIVITY		
MARINE CORPS BASE CAMP LEJEUNE		
SATISFACTORY TO DATE		
DES	DRW	CHK
PM		
BRANCH MANAGER		
CHIEF ENGINEER		
FIRE PROTECTION		
NAVAL FACILITIES ENGINEERING COMMAND NAVAL FACILITIES ENGINEERING COMMAND - MID-ATLANTIC ROICC FLORENCE CAMP LEJEUNE JACKSONVILLE, NC P1338 II MEF SIMULATION/TRAINING CENTER REPLACEMENT LIFE SAFETY - OVERALL - FIRST FLOOR PLAN		
SCALE: AS NOTED		
EPROJCT NO.: 1500892		
CONSTR. CONTR. NO.: N40085-20-C-0059		
NAVFAC DRAWING NO.:		
SHEET OF		
G-110		

DP2 SUBMISSION - P1338 BUILDING - PRE-FINAL SUBMISSION

UNCLASSIFIED

1

2

3

4

5

UNCLASSIFIED

FILE NAME: BIM360/HF PACKAGE 3P1338.MEF SIM CTR-150082-F.V1
 PLOTTED: 5/28/2021 2:08:20 PM



ADD VIEW TITLE BUBBLE - (A1)

LIFE SAFETY - FIRST FLOOR PLAN - AREA A
 SCALE: 1/8" = 1'-0"

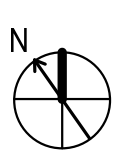
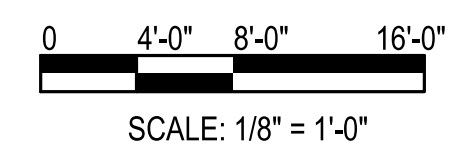
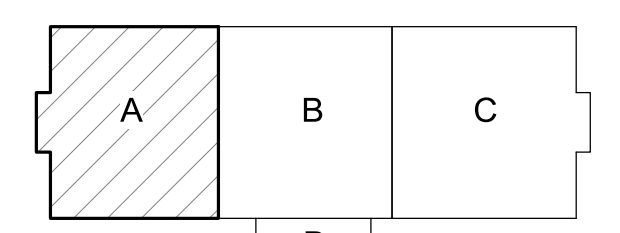
GENERAL NOTES

- SEE SHEET G-100 FOR LIFE SAFETY CODE ANALYSIS.
- ALL OCCUPANCIES ARE BUSINESS UNLESS NOTED OTHERWISE.

LEGEND

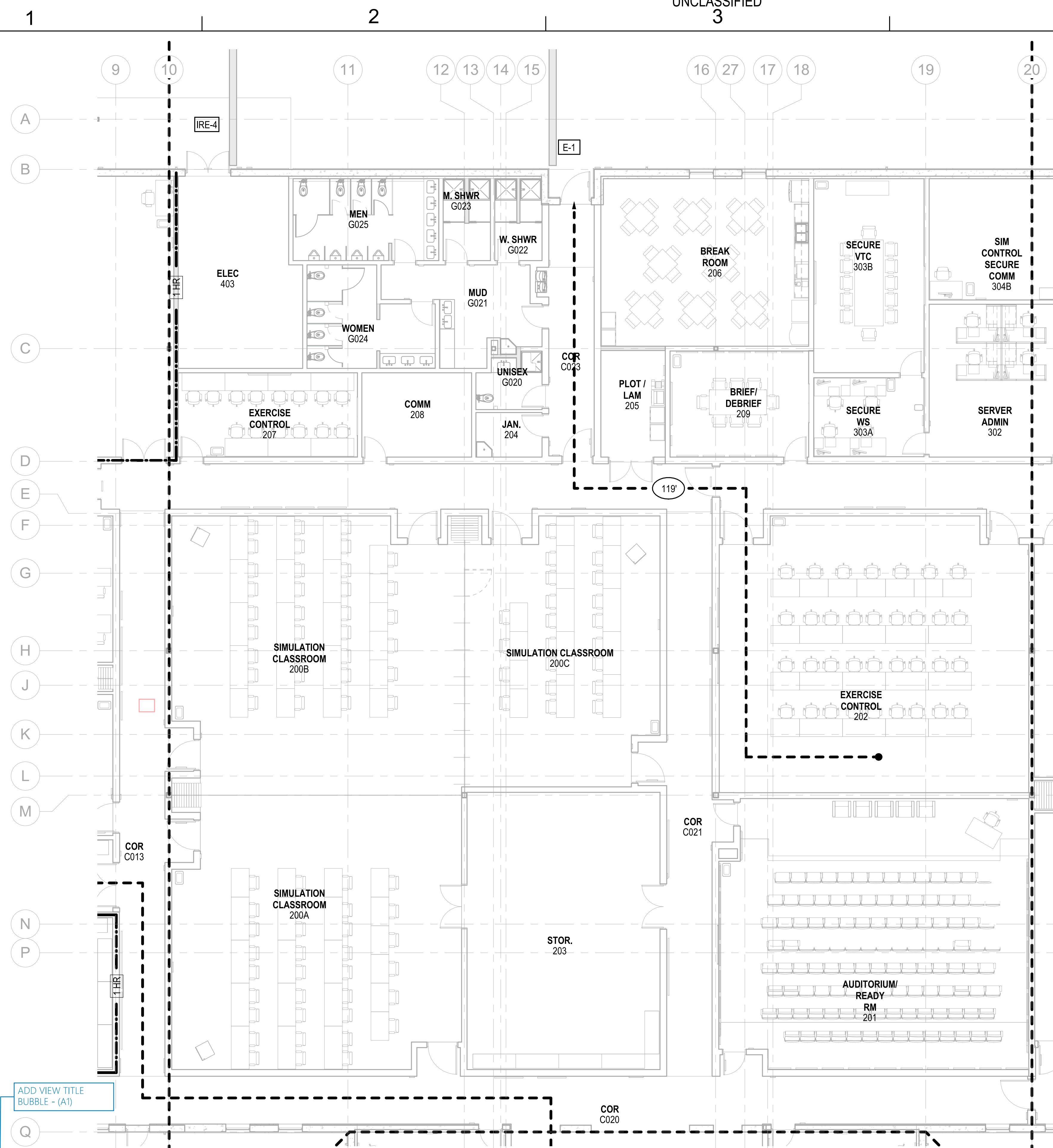
DESCRIPTION	SYMBOL
SMOKE PARTITION SP
1 HOUR FIRE BARRIER	----- 1 HR -----
OCCUPANCY LOAD	(0)
FIRE EXTINGUISHER	FE
FIRE EXTINGUISHER CABINET	FEC
EXIT NUMBER	E-0
EXIT SIGN	EXIT
TRAVEL DISTANCE	← (0) →
COMMON PATH OF TRAVEL	← (0) →
DEAD END	← (0)
OCCUPANT LOAD FACTOR	[X/Y] PERSONS/SQUARE METER
1 HR RATED CEILING	▨

KEYPLAN



APPROVED	DATE	APPR
DESCRIPTION	DATE	APPR
SYMBOL	DESCRIPTION	DATE
SEAL		
Michael Baker INTERNATIONAL		
100 AIRSIDE DRIVE MOON TOWNSHIP, PA 15108 APPROVED		
FOR COMMANDER NAVFAC		
ACTIVITY		
MARINE CORPS BASE CAMP LEJEUNE		
SATISFACTORY TO DATE		
DES	DRW	CHK
PM		
BRANCH MANAGER		
CHIEF ENGINEER		
FIRE PROTECTION		
JACKSONVILLE, NC JACKSONVILLE, NC		
P1338 II MEF SIMULATION/TRAINING CENTER REPLACEMENT		
LIFE SAFETY - FIRST FLOOR PLAN - AREA A		
DEPARTMENT OF THE NAVY NAVAL FACILITIES ENGINEERING COMMAND NAVAL FACILITIES ENGINEERING COMMAND ~ MID-ATLANTIC ROICC FLORENCE CAMP LEJEUNE MCB CAMP LEJEUNE		
SCALE: AS NOTED		
EPROJCT NO.: 150082		
CONSTR. CONTR. NO. N40085-20-C-0059		
NAVFAC DRAWING NO.		
SHEET	OF	
G-111		

UNCLASSIFIED



ADD VIEW TITLE BUBBLE - (A1)

LIFE SAFETY - FIRST FLOOR PLAN - AREA B
SCALE: 1/8" = 1'-0"

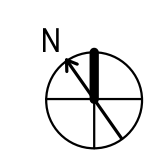
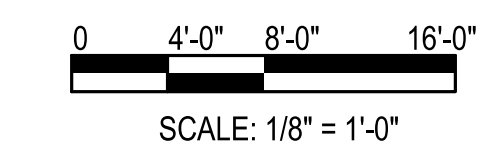
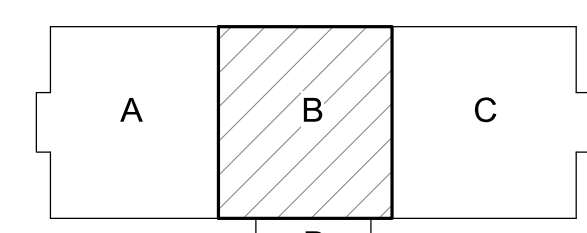
GENERAL NOTES

- 1. SEE SHEET G-100 FOR LIFE SAFETY CODE ANALYSIS.
- 2. ALL OCCUPANCIES ARE BUSINESS UNLESS NOTED OTHERWISE.

LEGEND

DESCRIPTION	SYMBOL
SMOKE PARTITION	SP
1 HOUR FIRE BARRIER	1 HR
OCCUPANCY LOAD	0
FIRE EXTINGUISHER	FE
FIRE EXTINGUISHER CABINET	FEC
EXIT NUMBER	E-0
EXIT SIGN	EXIT SIGN SYMBOL
TRAVEL DISTANCE	0'
COMMON PATH OF TRAVEL	0'
DEAD END	0'
OCCUPANT LOAD FACTOR	[XY] PERSONS/SQUARE METER
1 HR RATED CEILING	1 HR RATED CEILING SYMBOL

KEYPLAN



APPR. DATE

SYN. DESCRIPTION

SEAL

Michael Baker INTERNATIONAL
100 AIRSIDE DRIVE
MOON TOWNSHIP, PA 15108 A/E/IN/P/O
APPROVED

FOR COMMANDER NAVFAC

ACTIVITY
MARINE CORPS BASE
CAMP LEJEUNE

SATISFACTORY TO DATE

DES. DRW. CHK.

PM
BRANCH MANAGER
CHIEF ENGINEER
FIRE PROTECTION

NAVAL FACILITIES ENGINEERING COMMAND
NAVAL FACILITIES ENGINEERING COMMAND ~ MID-ATLANTIC
ROICC FLORENCE CAMP LEJEUNE
JACKSONVILLE, NC

P1338 II MEF SIMULATION/TRAINING CENTER
REPLACEMENT

LIFE SAFETY - FIRST FLOOR PLAN - AREA B

DEPARTMENT OF THE NAVY
NAVAL FACILITIES ENGINEERING COMMAND
ROICC FLORENCE CAMP LEJEUNE
M/CB CAMP LEJEUNE

SCALE: AS NOTED
EPROJECT NO.: 1590892
CONSTR. CONTR. NO.: N40085-20-C-0059
NAVFAC DRAWING NO.

SHEET OF

G-112

DF2 SUBMISSION - P1338 BUILDING - PRE-FINAL SUBMISSION

FILE NAME: BIM360/HF PACKAGE 3P1338.MEF SIM CTR-1590892-F-01
PLOTTED: 5/28/2021 2:08:21 PM

D
C
B
A

D
C
B
A

UNCLASSIFIED

DF2 SUBMISSION - P1338 BUILDING - PRE-FINAL SUBMISSION

1

2

3

4

5

20

21

22

23

24

25

26

A

B

C

D

E

F

G

H

J

K

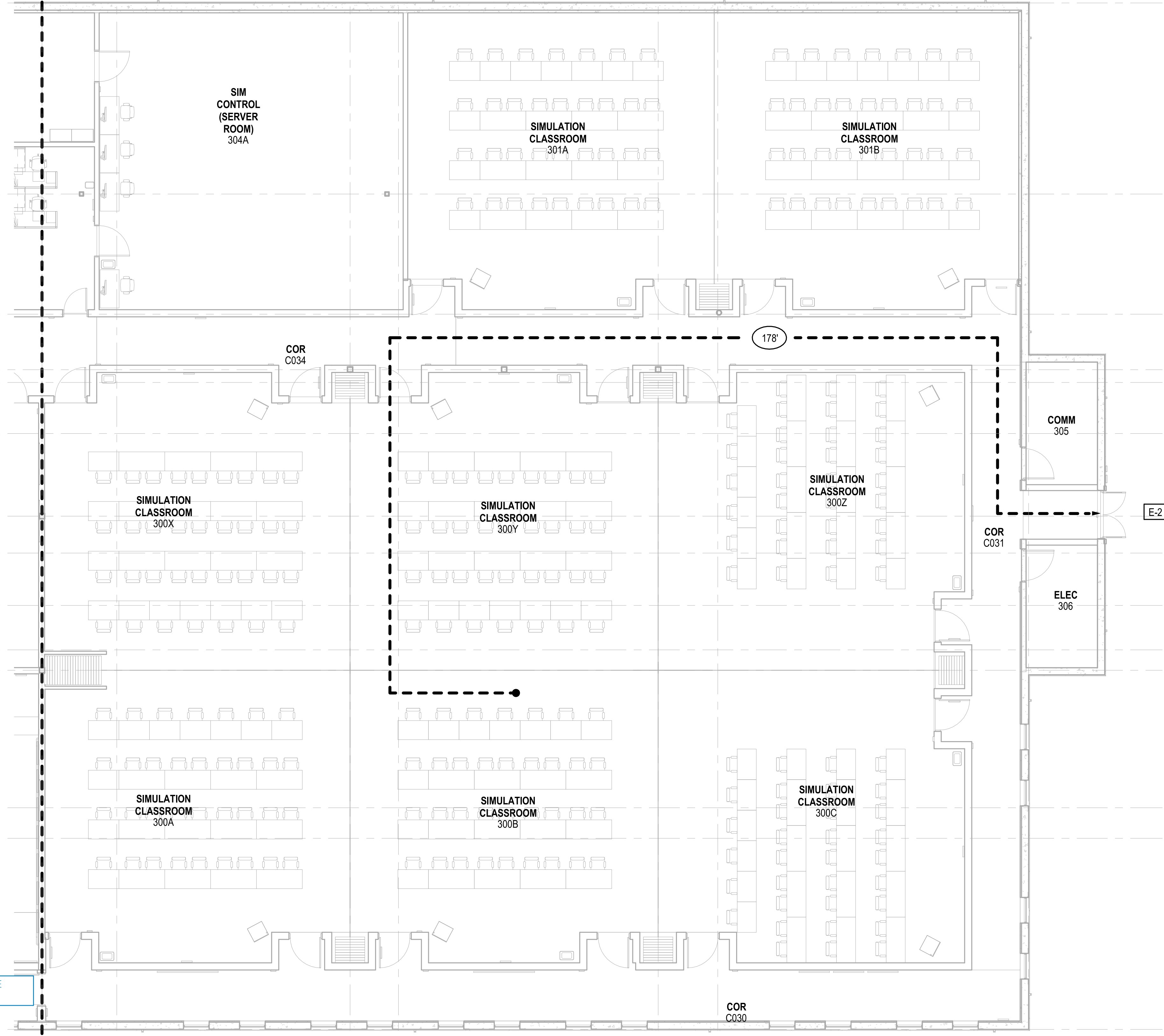
L

M

N

P

Q



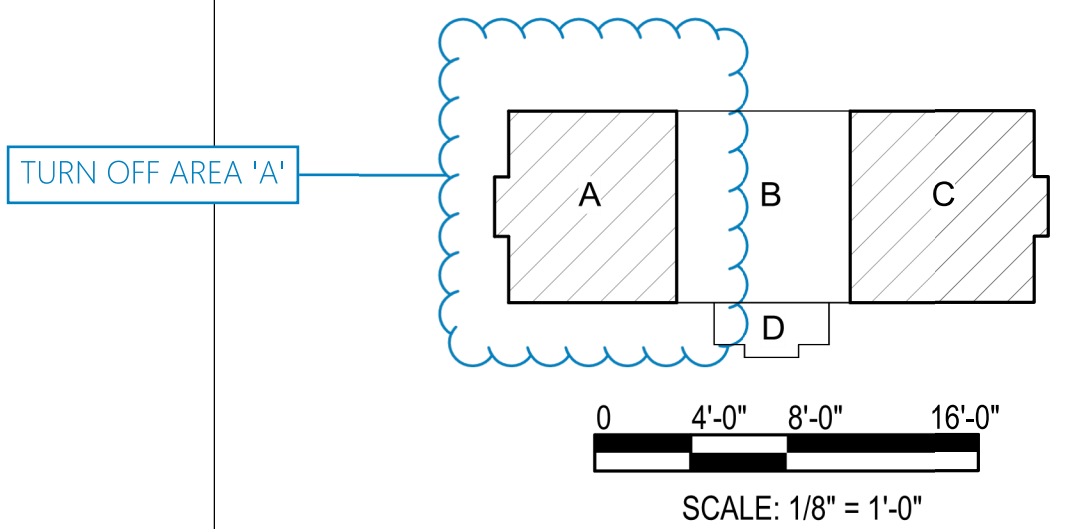
GENERAL NOTES

- 1. SEE SHEET G-100 FOR LIFE SAFETY CODE ANALYSIS.
- 2. ALL OCCUPANCIES ARE BUSINESS UNLESS NOTED OTHERWISE.

LEGEND

DESCRIPTION	SYMBOL
SMOKE PARTITION	SP
1 HOUR FIRE BARRIER	1 HR
OCCUPANCY LOAD	0
FIRE EXTINGUISHER	FE
FIRE EXTINGUISHER CABINET	FEC
EXIT NUMBER	E-0
EXIT SIGN	EXIT SIGN SYMBOL
TRAVEL DISTANCE	0'
COMMON PATH OF TRAVEL	0'
DEAD END	0'
OCCUPANT LOAD FACTOR	[XY] PERSONS/SQUARE METER
1 HR RATED CEILING	SHADING SYMBOL

KEYPLAN



ADD VIEW TITLE BUBBLE - (A1)

TURN OFF AREA 'A'

LIFE SAFETY - FIRST FLOOR PLAN - AREA C

SCALE: 1/8" = 1'-0"

1

2

3

4

5

FILE NAME: BIM360/HF PACKAGE 3P11338.MEF SIM CTR-1500892-F.V4

PLOTTED: 5/28/2021 2:08:21 PM

APPROVED: [Signature]

DATE: []

SYMBOL DESCRIPTION

SEAL

RO Jordan COMPANY

Michael Baker INTERNATIONAL

100 AIRSIDE DRIVE MOON TOWNSHIP, PA 15108 A/E IN P/O

APPROVED

FOR COMMANDER NAVFAC

ACTIVITY: MARINE CORPS BASE CAMP LEJEUNE

SATISFACTORY TO DATE

DES: [] DRW: [] CHK: []

PM: []

BRANCH MANAGER: []

CHIEF ENGINEER: []

FIRE PROTECTION

NAVAL FACILITIES ENGINEERING COMMAND JACKSONVILLE, NC

NAVAL FACILITIES ENGINEERING COMMAND ~ MID-ATLANTIC JACKSONVILLE, NC

ROICC FLORENCE CAMP LEJEUNE JACKSONVILLE, NC

P1338 II MEF SIMULATION/TRAINING CENTER REPLACEMENT

LIFE SAFETY - FIRST FLOOR PLAN - AREA C

DEPARTMENT OF THE NAVY

SCALE: AS NOTED

PROJECT NO.: 1500892

CONSTR. CONTR. NO.: N40085-20-C-0059

NAVFAC DRAWING NO.:

SHEET G-113 OF

DP2 SUBMISSION - P1338 BUILDING - PRE-FINAL SUBMISSION

UNCLASSIFIED

UNCLASSIFIED

1

2

3

4

5

D

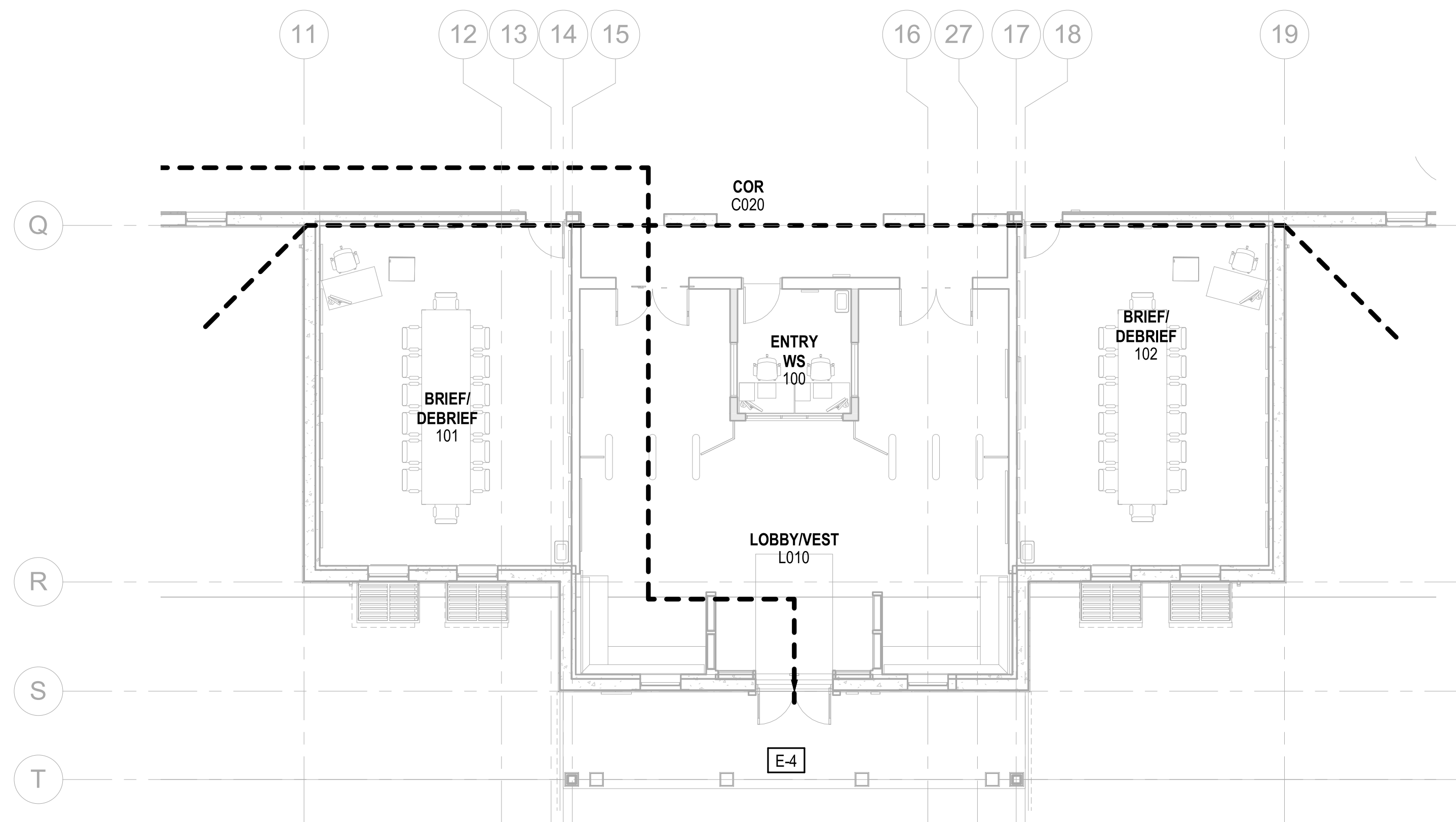
C

B

A

PLOTTED: 5/28/2021 2:08:22 PM

FILE NAME: BIM360/HF PACKAGE 3P11338.MEF SIM CTR-1590892.FVT



LIFE SAFETY - FIRST FLOOR PLAN - AREA D

SCALE: 1/8" = 1'-0"

ADD VIEW TITLE BUBBLE - (A1)

GENERAL NOTES

- 1. SEE SHEET G-100 FOR LIFE SAFETY CODE ANALYSIS.
- 2. ALL OCCUPANCIES ARE BUSINESS UNLESS NOTED OTHERWISE.

SYMBOL	DESCRIPTION	DATE	APPROVED



Michael Baker INTERNATIONAL

100 AIRSIDE DRIVE
MOON TOWNSHIP, PA 15108

FOR COMMANDER NAVFAC
ACTIVITY
MARINE CORPS BASE
CAMP LEJEUNE

SATISFACTORY TO DATE
DES DRW CHK

PM
BRANCH MANAGER
CHIEF ENGINEER
FIRE PROTECTION

NAVAL FACILITIES ENGINEERING COMMAND
NAVAL FACILITIES ENGINEERING COMMAND ~ MID-ATLANTIC
ROSC FLORENCE CAMP LEJEUNE
JACKSONVILLE, NC

JACKSONVILLE, NC

P1338 II MEF SIMULATION/TRAINING CENTER
REPLACEMENT

LIFE SAFETY - FIRST FLOOR PLAN - AREA D

DP2 SUBMISSION - P1338 BUILDING - PRE-FINAL SUBMISSION

SCALE: AS NOTED

EPROJECT NO.: 1590892

CONSTR. CONTR. NO.
N40085-20-C-0059

NAVFAC DRAWING NO.

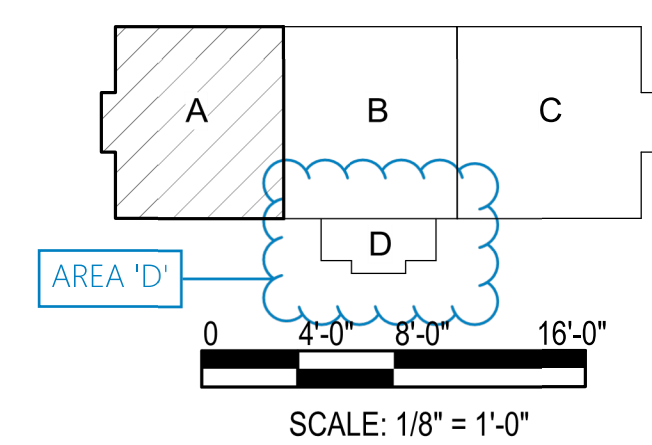
SHEET OF

G-114

LEGEND

DESCRIPTION	SYMBOL
SMOKE PARTITION	SP
1 HOUR FIRE BARRIER	1 HR
OCCUPANCY LOAD	0
FIRE EXTINGUISHER	FE
FIRE EXTINGUISHER CABINET	FEC
EXIT NUMBER	E-0
EXIT SIGN	EXIT SIGN SYMBOL
TRAVEL DISTANCE	0'
COMMON PATH OF TRAVEL	0'
DEAD END	0'
OCCUPANT LOAD FACTOR	[XY] PERSONS/SQUARE METER
1 HR RATED CEILING	SHADDED SQUARE

KEYPLAN



D

C

B

A