

FILE NAME: BIM360/IFB PACKAGE 3P1338.MEF SIM CTR-1590892.FW

PLOTTED: 01/12/2021 7:34:38 AM

FIRE ALARM LEGEND	
SYMBOL	DESCRIPTION
	FIRE ALARM ANNUNCIATOR PANEL
	FIRE ALARM CONTROL PANEL
	DOCUMENT CABINET
	DIGITAL ALARM COMMUNICATOR PANEL
	NOTIFICATION APPLIANCE CIRCUIT PANEL
	LOCAL OPERATOR CONTROL
	SURGE PROTECTION DEVICE
	CONTROL MODULE
	MONITOR MODULE
	MANUAL PULL STATION
	SMOKE DETECTOR / PHOTOELECTRIC
	SMOKE DETECTOR / IN DUCT
	CARBON MONOXIDE SENSOR
	COMBINATION SPEAKER / VISIBLE WALL MOUNTED. CD INDICATES CANDELA RATING.
	COMBINATION SPEAKER / VISIBLE CEILING MOUNTED. CD INDICATES CANDELA RATING.
	SPEAKER WALL MOUNTED.
	SPEAKER CEILING MOUNTED.
	FIRE ALARM WALL MOUNTED VISUAL ONLY STROBE. CD INDICATES CANDELA RATING.
	FIRE ALARM CEILING MOUNTED VISUAL ONLY STROBE. CD INDICATES CANDELA RATING.
	FLOW SWITCH
	TAMPER SWITCH
	BELL - VIBRATING

FIRE ALARM AND MASS NOTIFICATION GENERAL NOTES

- PROVIDE A COMPLETE, ADDRESSABLE, FIRE ALARM AND MASS NOTIFICATION SYSTEM IN THE FACILITY. FIRE ALARM AND MASS NOTIFICATION SYSTEM MUST BE DESIGNED AND INSTALLED TO MEET THE REQUIREMENTS OF UFC 3-600-01, UFC 4-021-01, NFPA 70, NFPA 72, AND NFPA 101. SYSTEM SHALL BE SIMPLEX, NOTIFIER, OR FIRE-LITE.
- IT IS THE INTENT OF THESE DOCUMENTS TO PROVIDE DESIGN, MATERIALS, AND EQUIPMENT FOR A TOTALLY FUNCTIONING AND OPERATING FIRE ALARM AND MASS NOTIFICATION SYSTEMS, INCLUDING THE PROPER INTERFACING AND COORDINATION WITH OTHER BUILDING SYSTEMS.
- THE GENERAL CHARACTER AND SCOPE OF THE WORK IS ILLUSTRATED IN THE SPECIFICATIONS AND THE DRAWINGS. THE SPECIFICATIONS AND DRAWINGS ARE DIVIDED INTO SEVERAL SECTIONS FOR CONVENIENCE ONLY AND THE CONTRACT DOCUMENTS MUST BE CONSIDERED AS A WHOLE. THE CONTRACTOR MUST BE RESPONSIBLE FOR THE COORDINATION OF ALL TRADES, SUBCONTRACTORS, AND VENDORS ENGAGED IN THIS WORK.
- THESE DRAWINGS DEPICT GENERAL LOCATIONS OF FIRE ALARM AND MASS NOTIFICATION SYSTEM EQUIPMENT AND FIELD DEVICES. FINAL LOCATIONS, QUANTITIES, APPLIANCE RATINGS, ETC. MUST BE PROVIDED BY THE INSTALLING CONTRACTOR IN ACCORDANCE WITH THE APPLICABLE CODES, STANDARDS, AND CONTRACT DOCUMENTS.
- THE CONTRACTOR MUST OBTAIN REQUIRED PERMITS AND APPROVALS AS REQUIRED BY THE AUTHORITY HAVING JURISDICTION. THE CONTRACTOR MUST PAY FOR AND SECURE PERMITS AND FEES FOR FIRE PROTECTION SYSTEMS WORK.
- PROVIDE FINAL SYSTEM LAYOUT DRAWINGS INCLUDING BATTERY CALCULATIONS AND VOLTAGE DROP CALCULATIONS AND OBTAIN APPROVAL OF THE FIRE MARSHAL AND ALL AUTHORITIES HAVING JURISDICTION. BATTERY CALCULATIONS MUST INCLUDE 20 PERCENT SAFETY MARGIN TO THE CALCULATED AMP-HOUR RATING PER NFPA 72. A BILL OF MATERIAL AND CONTACT ID POINT DESCRIPTION TABLE MUST BE INCLUDED IN THE FIRE ALARM AS-BUILT DRAWINGS.
- PROVIDE FIRE ALARM AND MASS NOTIFICATION SPEAKERS AND STROBES THROUGHOUT THE PROJECT AREAS. PROVIDE ADDITIONAL NOTIFICATION APPLIANCE CIRCUIT (NAC) PANELS AS REQUIRED. EACH NAC LOADING MUST NOT EXCEED 75% OF ITS RATED OUTPUT.
- PROVIDE DUCT SMOKE DETECTORS IN ALL SUPPLY DUCTS OF AIR HANDLING UNITS GREATER THAN 2,000 CFM. PROVIDE RELAYS FOR SHUT DOWN OF ASSOCIATED AIR HANDLING UNITS.
- PROVIDE MONITOR MODULES, TAMPER AND FLOW SWITCHES FOR THE SPRINKLER RISER AND CONTROL VALVES.
- WIRING FOR DEVICES MUST BE CLASS AS. PROVIDE ALL FIRE ALARM CIRCUITS IN ELECTRICAL METALLIC TUBING (EMT) OR INTERMEDIATE METAL CONDUIT (IMC).
- ALL RACEWAYS MUST BE FACTORY PAINTED RED. FLEXIBLE METALLIC CONDUIT (FMC) SHALL NOT EXCEED 6 FEET AND MUST ONLY BE PERMITTED FOR CONNECTIONS TO JUNCTION BOXES TO FIELD DEVICES. PROVIDE A RACEWAY LISTED FOR THE INSTALLATION IN WET LOCATIONS, SUCH AS RIGID METALLIC CONDUIT (RMC) AND LIQUID TIGHT FLEXIBLE METAL CONDUIT (LFMC). WET LOCATIONS ARE CONSIDERED ANY LOCATION WITHIN A 5 FOOT RADIUS OF FIRE SUPPRESSION EQUIPMENT AS DEFINED BY NFPA 70.
- DEVICES MUST BE FACTORY FINISHED WHITE.
- PROVIDE RECHARGEABLE SEALED LEAD ACID TYPE BATTERIES TO OPERATE THE FIRE ALARM SYSTEM UNDER SUPERVISORY CONDITIONS FOR 48 HOURS AND AUDIBLE AND ALARM DEVICES FOR AN ADDITIONAL 15 MINUTES OR 60 MINUTES FOR THE MASS NOTIFICATION SYSTEM IMMEDIATELY UPON LOSS OF POWER, WHICHEVER IS GREATER.
- INSTALLING CONTRACTOR MUST COORDINATE WITH MECHANICAL, ELECTRICAL AND OTHER TRADES TO FACILITATE INSTALLATION THAT IS COORDINATED AND CONSISTENT WITH BUILDING DESIGN, USE AND INTENT.
- COORDINATE FINAL SYSTEM TESTING WITH OTHER CONTRACTORS TO PROVIDE FULL SYSTEM OPERATION AT TIME OF TESTING.
- THE FIRE PROTECTION CONTRACTOR MUST BE RESPONSIBLE FOR SCHEDULING AND PERFORMING INSPECTIONS AND TESTS AS REQUIRED BY THE CONTRACTING OFFICER.
- FLOOR AND WALL CONDUIT PENETRATIONS MUST BE SLEEVED AND SEALED AS REQUIRED.
- PENETRATIONS OF THE BUILDING AIR BARRIER MUST BE SEALED TO MAINTAIN THE INTEGRITY OF THE AIR BARRIER.
- CONDUIT SIZE AND PERCENTAGE OF FILL TO BE DETERMINED BY INSTALLING CONTRACTOR AND MUST COMPLY WITH APPLICABLE STANDARDS AND SYSTEM MANUFACTURER'S REQUIREMENTS.
- CONDUIT AND WIRING MUST BE CONCEALED ABOVE CEILINGS IN FINISHED AREAS AND AREAS WITH DROPPED CEILINGS. CONDUIT AND WIRING INSTALLED ABOVE CEILINGS MUST NOT INTERFERE WITH THE REMOVAL OF THE CEILING TILES, AND HVAC UNIT AIR FILTERS. IN AREAS WITHOUT CEILING, CONDUIT AND WIRING MUST BE INSTALLED AS TIGHT AS POSSIBLE TO UNDERSIDE OF FLOOR SLAB, UNLESS OBSTRUCTIONS REQUIRE OTHERWISE.
- FIRE ALARM WIRING MUST NOT BE INSTALLED IN THE SAME CONDUITS OR JUNCTION BOXES AS LIGHTING, POWER OR OTHER WIRING.
- RUN WIRING TO CONTROL PANELS IN THE VERTICAL OR HORIZONTAL PLANE, MAKE TURNS AT 90 DEGREE ANGLES, AND TIGHTLY BUNDLE, WRAP, AND IDENTIFY CONDUCTORS INDIVIDUALLY WITH PERMANENT MARKINGS.
- PULL CONDUCTORS SPLICE FREE. THE USE OF WIRE NUTS, CRIMPED CONNECTORS, OR TWISTING OF CONDUCTORS IS PROHIBITED.
- TERMINATIONS MUST BE AT A TERMINAL STRIP. DEVICES MUST HAVE SCREW TERMINALS.
- SIGNALING LINE AND INITIATING DEVICE CIRCUITS MUST BE MINIMUM 16 GAUGE WIRE.
- WALL ADDRESSABLE CONTROL MODULES AND ADDRESSABLE MONITOR MODULES MUST BE LOCATED WITHIN 10 FEET OF THE DEVICES BEING MONITORED. DUCT SMOKE DETECTORS MUST BE WITHIN 3 FEET OF ADDRESSABLE RELAY.
- CONTRACTOR MUST PROVIDE ADEQUATE AUDIBLE NOTIFICATION DEVICES TO MEET THE AUDIBILITY AND INTELLIGIBILITY REQUIREMENTS OF NFPA 72 AND UFC 4-021-01. THE MINIMUM REQUIRED COMMON INTELLIGIBILITY SCALE IS 0.7.
- PROVIDE HORN SPEAKERS MOUNTED ON THE EXTERIOR OF THE BUILDING IN ADDITION TO PROVIDE NOTIFICATION OF ANY AREAS COMMONLY USED BY BUILDING OCCUPANTS. AREAS INCLUDE COURTYARDS, COVERED BREAK AREAS, DESIGNATED SMOKING AREAS, AND SIDEWALKS LEADING FROM THE BUILDING'S EXIT DOORS TO A PUBLIC STREET OR FROM PARKING AREAS FOR A DISTANCE UP TO 16 FEET FROM THE BUILDING.
- PROVIDE VISIBLE NOTIFICATION APPLIANCES IN COMMON AND PUBLIC SPACES AS REQUIRED BY THE APPLICABLE CODES TO MEET VISIBLE SIGNALING INTENSITY REQUIREMENTS.
- PROVIDE CLEAR STROBE MARKED "ALERT" FOR FIRE ALARM AND MASS NOTIFICATION SYSTEM NOTIFICATIONS.
- COORDINATE DUCT SMOKE DETECTION WITH MECHANICAL DESIGN CONTRACTOR. DUCT SMOKE DETECTOR REMOTE LAMPS AND TEST STATION MUST BE WALL MOUNTED, ACCESSIBLE, VISIBLE, AND PERMANENTLY LABELED. THE DUCT DETECTORS MUST RECEIVE THEIR POWER AND RESET FROM THE FIRE ALARM CONTROL UNIT.
- PROVIDE REMOTE TEST LAMPS FOR ANY INACCESSIBLE DEVICES.
- PROVIDE SURGE PROTECTION FOR CIRCUITS THAT ENTER OR EXIT A BUILDING.
- PROVIDE WEATHERPROOF DEVICES AS REQUIRED AND AS INDICATED.
- DEVICES MOUNTED IN SUSPENDED CEILING MUST BE MOUNTED IN THE CENTER OF THE CEILING TILE.
- PROVIDE A DOCUMENTATION CABINET ADJACENT TO FIRE ALARM CONTROL PANEL. CABINET MUST BE STEEL WITH LOCKING. HINGE MOUNTED DOOR PROMINENTLY LABELED "SYSTEM RECORD DOCUMENTS". CABINET MUST STORE LIFE SAFETY, FIRE ALARM, AND SPRINKLER AS-BUILT DRAWINGS AND NFPA 72 RECORD OF COMPLETION IN PAPER FORMAT. CD/DVD OF SITE-SPECIFIC SOFTWARE, FIRE ALARM AND SPRINKLER AS-BUILT DRAWINGS, NFPA 72 RECORD OF COMPLETION, AND OPERATIONS AND MAINTENANCE MANUALS MUST BE STORED IN A CD JEWEL CASE.
- PROVIDE A PARTS BOX ADJACENT TO THE FMCP. CABINET MUST BE STEEL, LOCKING, WITH HINGE-MOUNTED DOOR, KEYPED THE SAME AS THE FMCP. CABINET MUST INCLUDE SPARE PARTS AS DEFINED IN THE PROJECT SPECIFICATIONS, PLUS FOUR (4) FUSES FOR EACH FUSED CONDUIT.
- DUAL-ACTION, MANUAL FIRE PULL STATIONS MUST BE PROVIDED WITHIN 5 FEET OF EVERY EXIT OF THE BUILDING. MANUAL PULL STATIONS MUST BE RESET WITH THE USE OF A KEY ONLY. USE OF A WRENCH, HEX KEY, ALLEN KEY, OR ALLEN WRENCH TO OPEN A MANUAL PULL STATION MUST NOT BE PERMITTED.
- WATER FLOW ALARM AND VALVE TAMPER SWITCHES ATTACHED TO THE BUILDING WET-PIPE SPRINKLER SYSTEM TO PROVIDE REQUIRED SUPERVISION MUST BE CONNECTED TO THE FIRE ALARM SYSTEM.
- INSTALL A POINT REPORTING DIGITAL ALARM COMMUNICATOR TRANSMITTER THAT IS COMPATIBLE WITH THE SUR-GARD SYSTEM III MULTI-PLATFORM DIGITAL TELEPHONE RECEIVER AND IS PROGRAMMED TO REPORT BY POINTS VIA CONTACT ID PROTOCOL. PROVIDE TWO (2) CAT 6 UTP CABLES INSIDE 1-INCH CONDUIT FROM THE FMCP TO THE TELEPHONE EQUIPMENT ROOM.
- THE GOVERNMENT WILL INSTALL THE TRX-401 MASS NOTIFICATION TRANSCEIVER. THE CONTRACTOR MUST PROVIDE CONDUIT FOR MOUNTING THE MASS NOTIFICATION ANTENNA, CONDUIT FOR THE MASS NOTIFICATION ANTENNA CABLE, CONDUIT TO CONNECT THE TRANSCEIVER TO THE FIRE ALARM CONTROL PANEL, AND 120V POWER FOR THE TRANSCEIVER.
- PROVIDE AND ATTACH A LEGIBLE, TYPED LABEL ON ALL ADDRESSABLE DEVICES TO INDICATE ITS ADDRESS. FOR ANY DEVICE LOCATED ABOVE A FALSE CEILING, CONTRACTOR MUST PROVIDE A LEGIBLE, TYPED LABEL ATTACHED TO THE CEILING GRID THE DEVICE NOMENCLATURE AND ADDRESS.

APPROVED	DATE	APPR
SYMBOL DESCRIPTION		
PRELIMINARY FOR REFERENCE ONLY		
Michael Baker INTERNATIONAL 100 AIRSIDE DRIVE MOON TOWNSHIP, PA 15108 A/E IN/PG APPROVED		
FOR COMMANDER NAVFAC		
ACTIVITY		
MARINE CORPS BASE CAMP LEJEUNE		
SATISFACTORY TO DATE		
DES	JAM	DRW ADH
CHK	CD	DJW
PM		
BRANCH MANAGER		
CHIEF ENGINEER		
FIRE PROTECTION		
DEPARTMENT OF THE NAVY NAVAL FACILITIES ENGINEERING COMMAND ~ MID-ATLANTIC ROICC FLORENCE CAMP LEJEUNE JACKSONVILLE, NC MCB CAMP LEJEUNE JACKSONVILLE, NC P1338F II MEF SIMULATION/TRAINING CENTER REPLACEMENT FIRE ALARM - GENERAL NOTES, ABBREVIATIONS, & SYMBOLS		
SCALE: AS NOTED		
EPROJCT NO.: 1590892		
CONSTR. CONTR. NO. N40085-20-C-0059		
NAVFAC DRAWING NO.		
SHEET OF		
FA001		

DP2 SUBMISSION - P1338 BUILDING -PRE-FINAL SUBMISSION

UNCLASSIFIED

D

C

B

A

1

2

3

4

5

UNCLASSIFIED

UNCLASSIFIED

		SEQUENCE OF OPERATIONS															
		A	B	C	D	E	F	G	H	I	J	K	L	M	N	P	
ALARM CONDITIONS	ACTIVATION OF A MANUAL FIRE ALARM PULL STATION	1	X		X	X						X	X				
	ACTIVATION OF AREA SMOKE DETECTOR	2	X		X	X					X		X		X		
	ACTIVATION OF DUCT SMOKE DETECTOR	3		X				X	X					X	X		
	ACTIVATION OF AIR SAMPLING DETECTION			X				X	X					X	X		
	ACTIVATION OF WATERFLOW SWITCH	4	X		X	X				X	X	X	X	X	X		
TROUBLE CONDITIONS	ACTIVATION OF A CARBON MONOXIDE DETECTOR	5	X		X	X					X	X	X	X	X		
	COMMON TROUBLE	6	X					X									
	FIELD WIRING OR SYSTEM COMPONENT FAULT	7	X					X									
	LOSS OF PRIMARY AC POWER	8	X					X									
	OPEN CIRCUIT	9	X					X									
	NAC SHORT	10	X					X									
	LOW BATTERY	11	X					X									
	CIRCUIT DISCONNECT	12	X					X									
	GROUND FAULT	13	X					X									
	SUPERVISORY CONDITIONS	COMMON SUPERVISORY	14		X				X								
		TAMPER SWITCH	15		X				X								
		ACTIVATION OF MASS NOTIFICATION SYSTEM	16		X	X			X				X	X	X		
		LOCAL MICROPHONE MNS OPERATION	17		X	X			X		X		X	X	X		
LOC ACTIVATION OR PRE-RECORDED MNS MESSAGES		18		X	X			X		X		X	X	X			
SIGNAL FROM WIDE AREA MASS NOTIFICATION SYSTEM		19		X	X			X		X		X	X	X			

SEQUENCE OF OPERATIONS

GENERAL NOTES

1. REFER TO SHEET FA001 FOR GENERAL NOTES AND SYMBOLS.

SYMBOL	DESCRIPTION	DATE	APPROVED



PRELIMINARY
FOR REFERENCE ONLY



Michael Baker INTERNATIONAL
100 AIRSIDE DRIVE
MOON TOWNSHIP, PA 15108
APPROVED

FOR COMMANDER NAVFAC
ACTIVITY
MARINE CORPS BASE
CAMP LEJEUNE
SATISFACTORY TO DATE
DES JAM | DRW ADH | CHK DJW
PM
BRANCH MANAGER
CHIEF ENGINEER
FIRE PROTECTION

DEPARTMENT OF THE NAVY
NAVAL FACILITIES ENGINEERING COMMAND
NAVAL FACILITIES ENGINEERING COMMAND ~ MID-ATLANTIC
ROICC FLORENCE CAMP LEJEUNE
MBC CAMP LEJEUNE
JACKSONVILLE, NC
JACKSONVILLE, NC
P1338F II MEF SIMULATION/TRAINING CENTER
REPLACEMENT
FIRE ALARM - SEQUENCE OF OPERATIONS

SCALE: AS NOTED
PROJECT NO.: 150082
CONSTR. CONTR. NO.: N40085-20-C-0059
NAVFAC DRAWING NO.:
SHEET OF
FA002

UNCLASSIFIED

1

2

3

4

5

D

C

B

A

1

2

UNCLASSIFIED

3

4

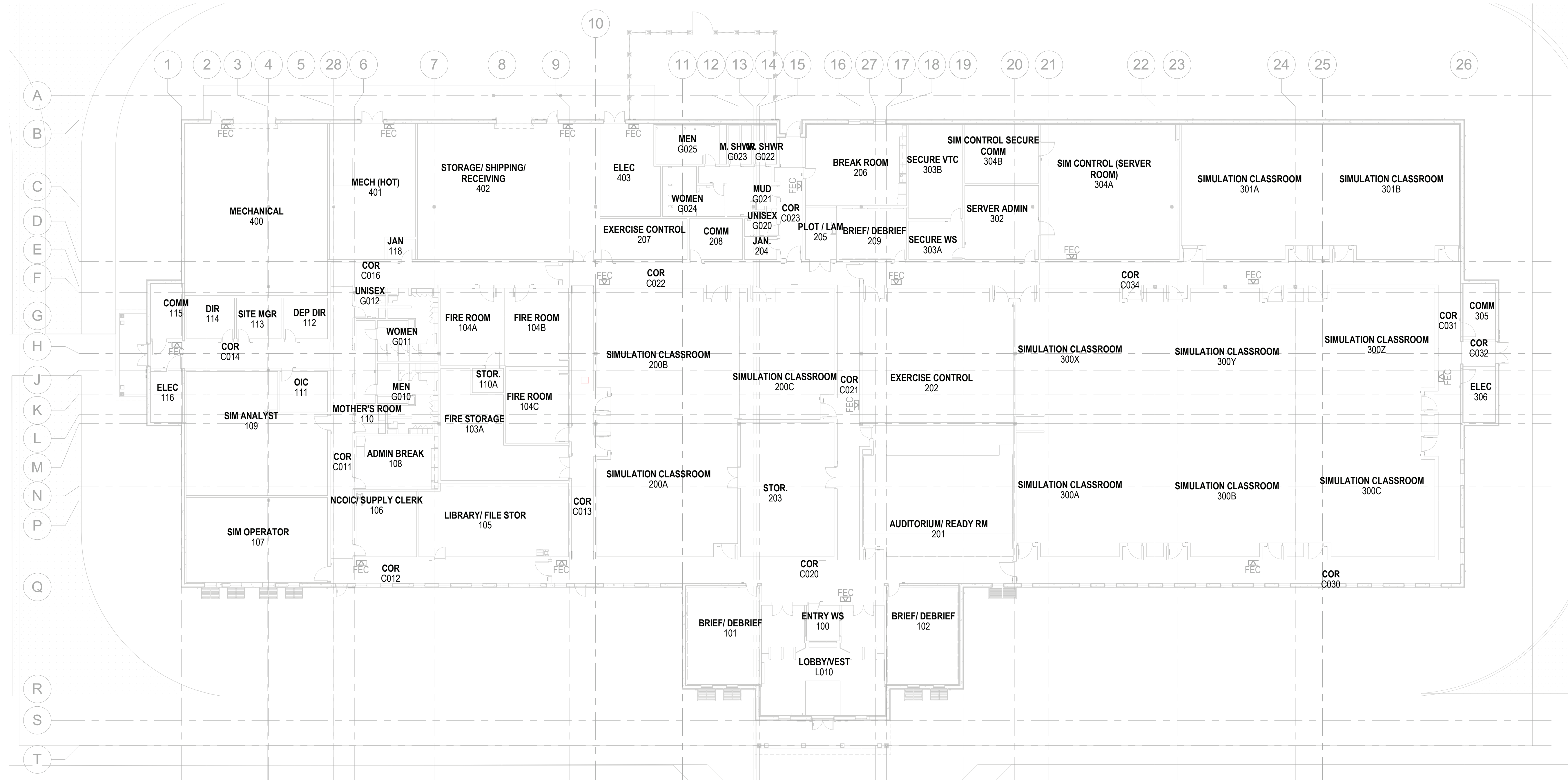
5

D

C

B

A



SEE FLOOR PLAN AREA SHEETS FOR INDIVIDUAL APPLIANCE PLACEMENT.

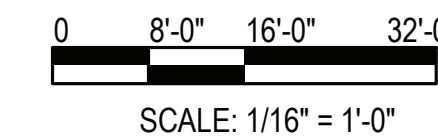
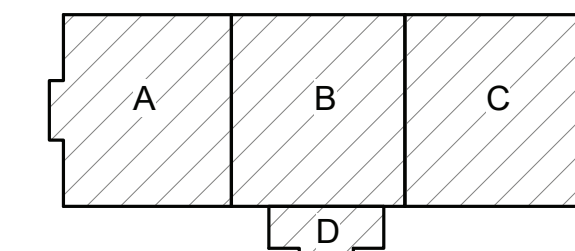
FIRE ALARM - OVERALL - FIRST FLOOR PLAN


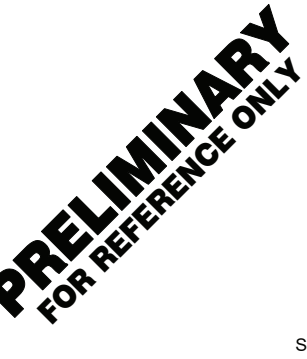

SCALE: 1/16" = 1'-0"

GENERAL NOTES

1. REFER TO SHEET FA001 FOR GENERAL NOTES AND SYMBOLS.

KEYPLAN



DATE	APPR
SYMBOL	DESCRIPTION
	
	
	
Michael Baker INTERNATIONAL <small>100 AIRSIDE DRIVE MOON TOWNSHIP, PA 15108 A/E/IN/P</small> <small>APPROVED</small>	
FOR COMMANDER NAVFAC	
ACTIVITY	
MARINE CORPS BASE CAMP LEJEUNE	
SATISFACTORY TO DATE	
DES JAM	DRW ADH
CHK DJW	PM
BRANCH MANAGER	
CHIEF ENGINEER	
FIRE PROTECTION	
DEPARTMENT OF THE NAVY NAVAL FACILITIES ENGINEERING COMMAND ~ MID-ATLANTIC JACKSONVILLE, NC MCB CAMP LEJEUNE JACKSONVILLE, NC P1338F II MEF SIMULATION/TRAINING CENTER REPLACEMENT FIRE ALARM - OVERALL - FIRST FLOOR PLAN	
SCALE:	AS NOTED
PROJECT NO.:	1500892
CONSTR. CONTR. NO.:	N40085-20-C-0059
NAVFAC DRAWING NO.:	
SHEET	OF
FA110	

PLOTTED: 01/12/2021 7:34:30 AM

FILE NAME: BIM_360/IFB PACKAGE 3PT1338_MEF_SIM_CTR-1500892-F-1

1

2

UNCLASSIFIED

3

4

5

DP2 SUBMISSION - P1338 BUILDING - PRE-FINAL SUBMISSION

UNCLASSIFIED

1

2

3

4

5

GENERAL NOTES

1. REFER TO SHEET FA001 FOR GENERAL NOTES AND SYMBOLS.

SYMBOL	DESCRIPTION	DATE	APPROVED



PRELIMINARY
FOR REFERENCE ONLY



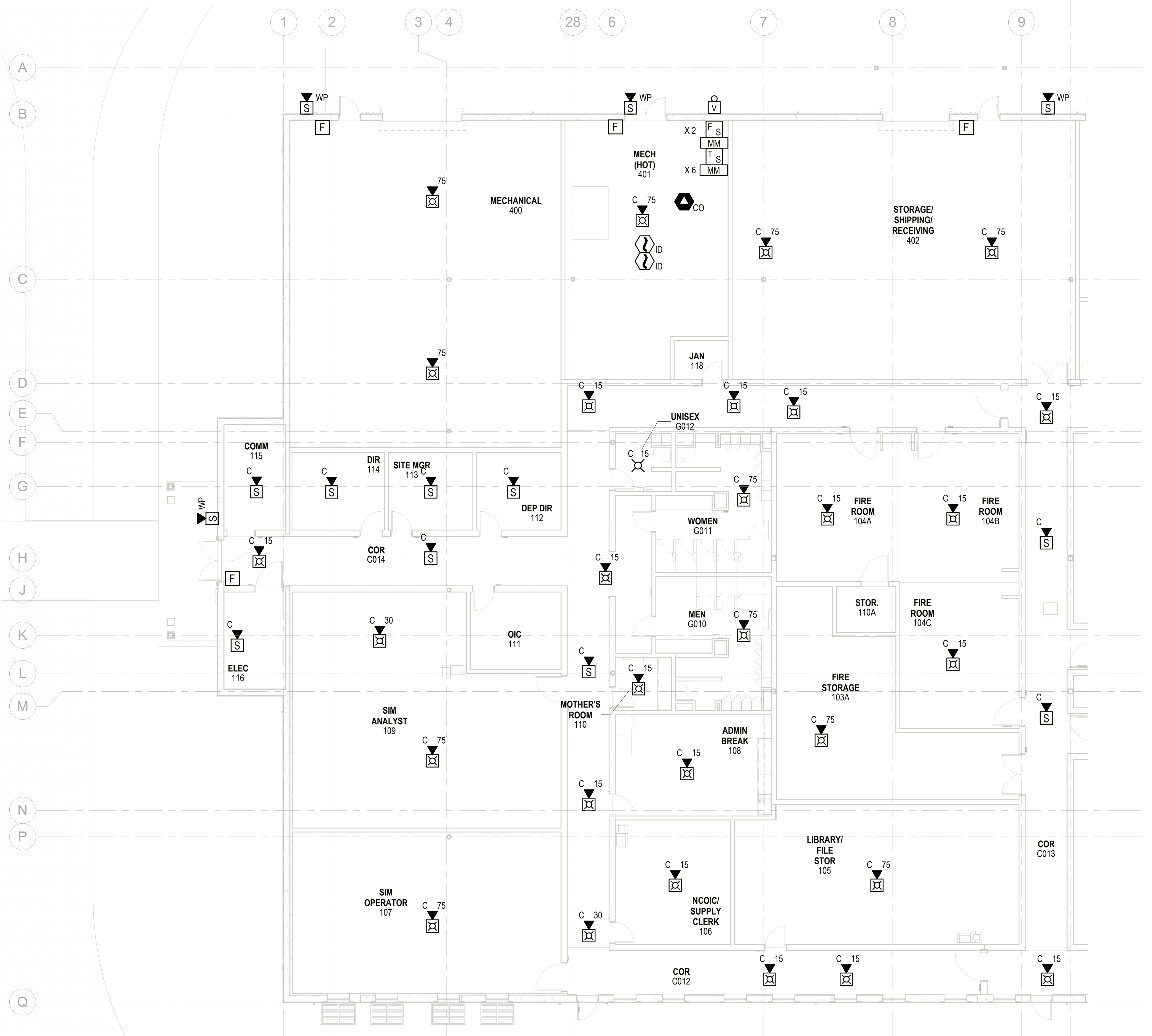
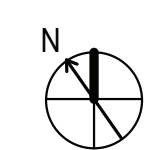
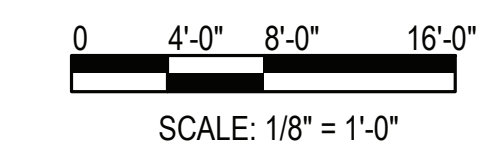
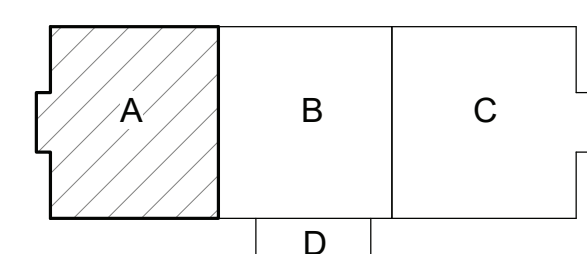
Michael Baker INTERNATIONAL
100 AIRSIDE DRIVE
MOON TOWNSHIP, PA 15108

FOR COMMANDER NAVFAC
ACTIVITY
MARINE CORPS BASE
CAMP LEJEUNE
SATISFACTORY TO DATE
DES: JAM | DRW: ADH | CHK: DJW
PM
BRANCH MANAGER
CHIEF ENGINEER
FIRE PROTECTION

DEPARTMENT OF THE NAVY
NAVAL FACILITIES ENGINEERING COMMAND ~ MID-ATLANTIC
ROIC FLORENCE CAMP LEJEUNE
JACKSONVILLE, NC
JACKSONVILLE, NC
P1338F II MEF SIMULATION/TRAINING CENTER
REPLACEMENT
FIRE ALARM - FIRST FLOOR PLAN - AREA A

SCALE: AS NOTED
PROJECT NO.: 1500892
CONSTR. CONTR. NO.: N40085-20-C-0059
NAVFAC DRAWING NO.:
SHEET OF
FA111

KEYPLAN



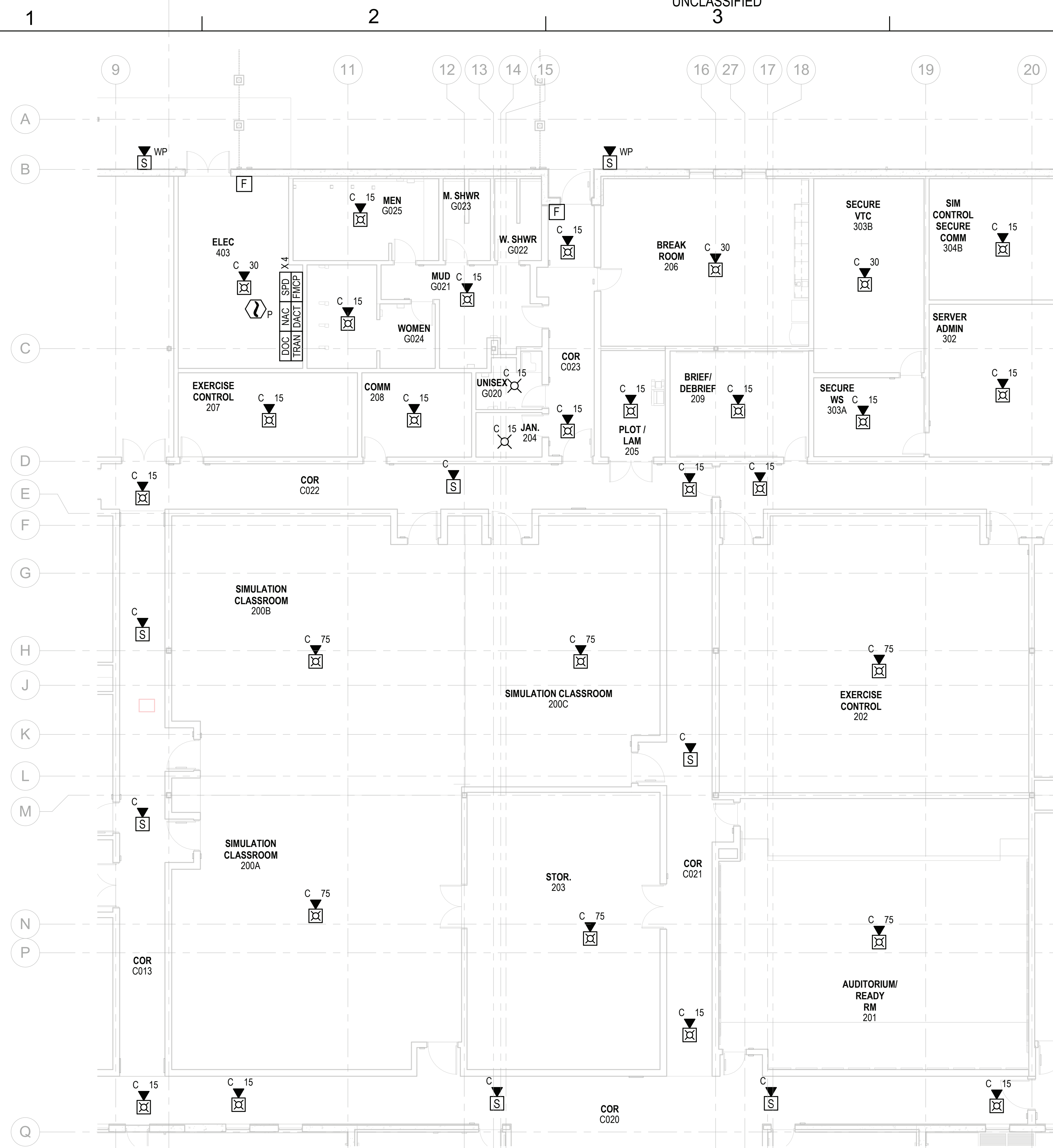
FIRE ALARM - FIRST FLOOR PLAN - AREA A
SCALE: 1/8" = 1'-0"

FILE NAME: BIM_360/HF PACKAGE 3P1338.MEF SIM CTR-1500892.F4

PLOTTED: 01/12/2021 7:34:41 AM

UNCLASSIFIED

DP2 SUBMISSION - P1338 BUILDING - PRE-FINAL SUBMISSION



FIRE ALARM - FIRST FLOOR PLAN - AREA B
 SCALE: 1/8" = 1'-0"

GENERAL NOTES

1. REFER TO SHEET FA001 FOR GENERAL NOTES AND SYMBOLS.

DATE	APPR
DESCRIPTION	SYM



PRELIMINARY
 FOR REFERENCE ONLY



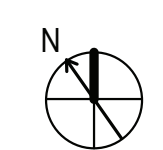
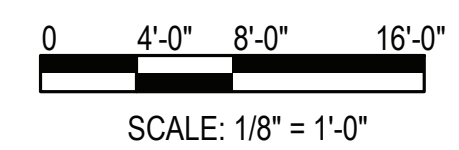
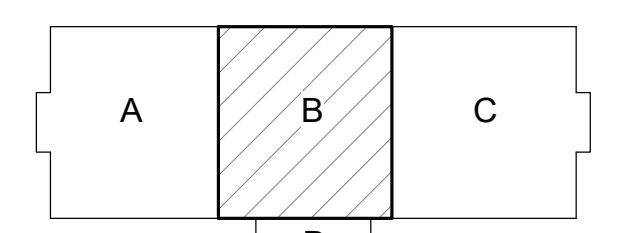
Michael Baker INTERNATIONAL
 100 AIRSIDE DRIVE
 MOON TOWNSHIP, PA 15108

FOR COMMANDER NAVFAC
 ACTIVITY: MARINE CORPS BASE CAMP LEJEUNE
 SATISFACTORY TO DATE
 DES JAM | DRW ADH | CHK DJW
 PM
 BRANCH MANAGER
 CHIEF ENGINEER
 FIRE PROTECTION

DEPARTMENT OF THE NAVY
 NAVAL FACILITIES ENGINEERING COMMAND
 NAVAL FACILITIES ENGINEERING COMMAND ~ MID-ATLANTIC
 JACSONVILLE, NC
 ROIC FLORENCE CAMP LEJEUNE
 MCB CAMP LEJEUNE
 JACKSONVILLE, NC
 P1338F II MEF SIMULATION/TRAINING CENTER REPLACEMENT
 FIRE ALARM - FIRST FLOOR PLAN - AREA B

SCALE: AS NOTED
 EPROJECT NO.: 1500892
 CONSTR. CONTR. NO.: N40085-20-C-0059
 NAVFAC DRAWING NO.:
 SHEET OF
FA112

KEYPLAN



PLOTTED: 01/12/2021 7:34:42 AM

FILE NAME: BIM_360/HF PACKAGE 3P1338.MEF SIM CTR-1500892.FVT

DP2 SUBMISSION - P1338 BUILDING - PRE-FINAL SUBMISSION

UNCLASSIFIED

1

2

3

4

5

20 21 22 23 24 25 26

A

B

C

D

E

F

G

H

J

K

L

M

N

P

Q

SIM CONTROL (SERVER ROOM) 304A

SIMULATION CLASSROOM 301A

SIMULATION CLASSROOM 301B

SIMULATION CLASSROOM 300Y

SIMULATION CLASSROOM 300Z

SIMULATION CLASSROOM 300X

SIMULATION CLASSROOM 300A

SIMULATION CLASSROOM 300B

SIMULATION CLASSROOM 300C

COMM 305

ELEC 306

COR C030

COR C034

COR C031



GENERAL NOTES

1. REFER TO SHEET FA001 FOR GENERAL NOTES AND SYMBOLS.

KEYNOTES

1. PROVIDE ASPIRATING SMOKE DETECTION SYSTEM IN ROOMS 304A AND 304B IN ACCORDANCE WITH SECTION 4-11.3 OF UFC 3-600-01.



PRELIMINARY FOR REFERENCE ONLY



Michael Baker INTERNATIONAL

FOR COMMANDER NAVFAC

MARINE CORPS BASE CAMP LEJEUNE

SATISFACTORY TO DATE

DES JAM DRW ADH CHK DJW

PM

BRANCH MANAGER

CHIEF ENGINEER

FIRE PROTECTION

NAVAL FACILITIES ENGINEERING COMMAND JACKSONVILLE, NC

NAVAL FACILITIES ENGINEERING COMMAND ~ MID-ATLANTIC JACKSONVILLE, NC

ROIC FLORENCE CAMP LEJEUNE MCB CAMP LEJEUNE

P1338F II MEF SIMULATION/TRAINING CENTER REPLACEMENT

FIRE ALARM - FIRST FLOOR PLAN - AREA C

SCALE: AS NOTED

EPROJCT NO.: 1500892

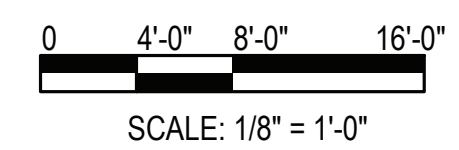
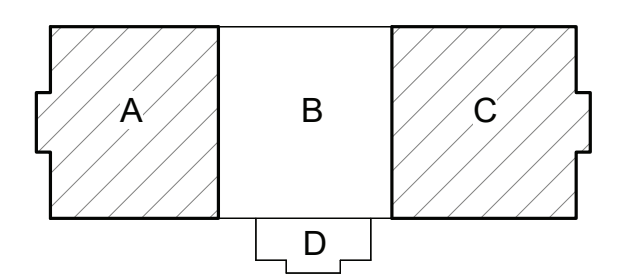
CONSTR. CONTR. NO. N40085-20-C-0059

NAVFAC DRAWING NO.

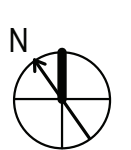
SHEET OF

FA113

KEYPLAN



SCALE: 1/8" = 1'-0"



PLOTTED: 01/12/2021 7:34:43 AM

FILE NAME: BIM_360/HF PACKAGE 3P11338.MEF SIM CTR-1500892-F.V4

FIRE ALARM - FIRST FLOOR PLAN - AREA C

SCALE: 1/8" = 1'-0"

1

2

3

4

5

1

2

3

4

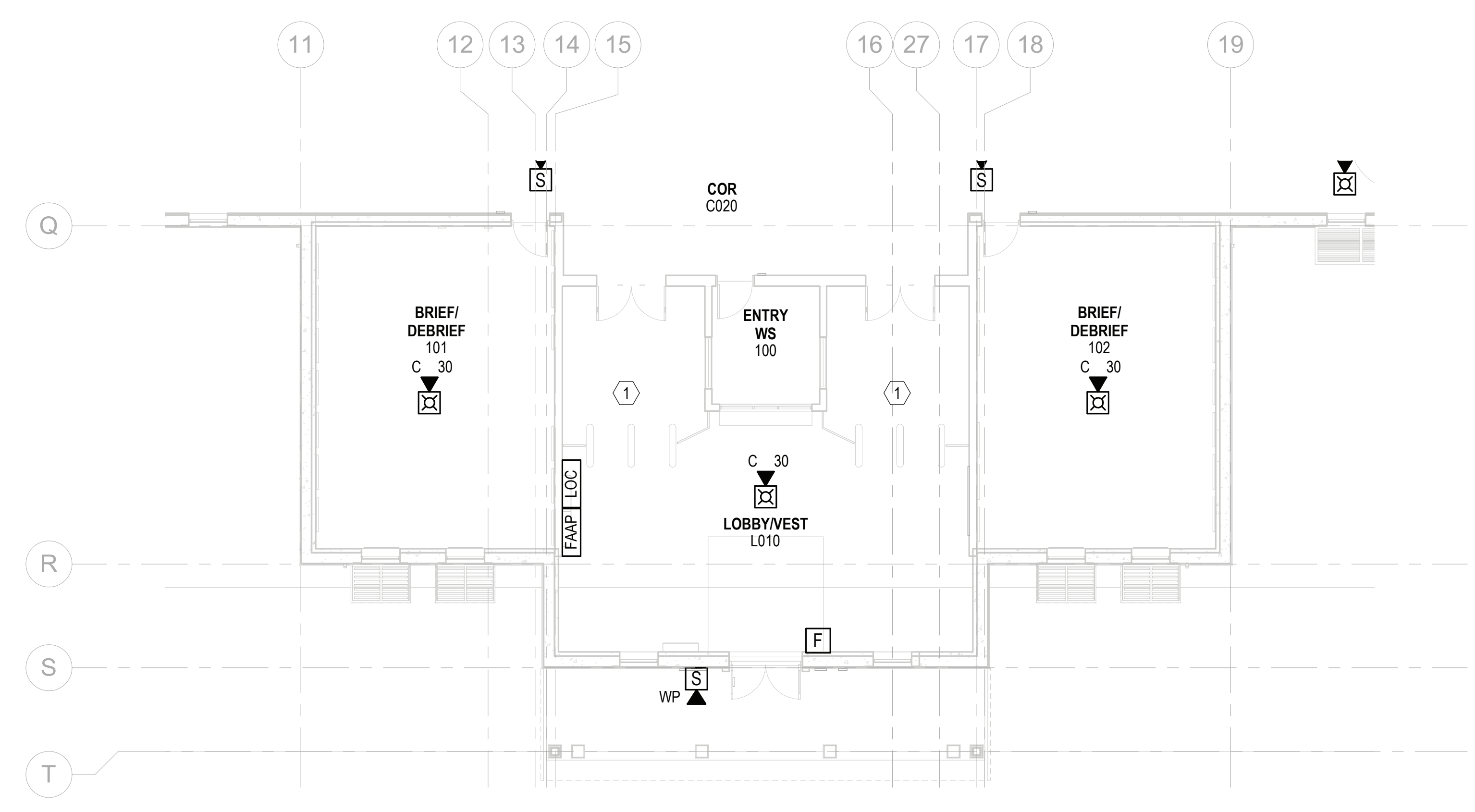
5

D

C

B

A



FIRE ALARM - FIRST FLOOR PLAN - AREA D
 SCALE: 1/8" = 1'-0"

GENERAL NOTES

1. REFER TO SHEET FA001 FOR GENERAL NOTES AND SYMBOLS.

KEYNOTES

1. INTERFACE TURN STYLES TO RELEASE ON ALARM.

SYMBOL	DESCRIPTION	DATE	APPROVED



PRELIMINARY
 FOR REFERENCE ONLY



Michael Baker INTERNATIONAL
 100 AIRSIDE DRIVE
 MOON TOWNSHIP, PA 15108
 APPROVED

FOR COMMANDER NAVFAC
 ACTIVITY
 MARINE CORPS BASE
 CAMP LEJEUNE

SATISFACTORY TO DATE
 DES JAM | DRW ADH | CHK DJW
 PM

BRANCH MANAGER
 CHIEF ENGINEER
 FIRE PROTECTION

NAVAL FACILITIES ENGINEERING COMMAND
 JACKSONVILLE, NC

NAVAL FACILITIES ENGINEERING COMMAND ~ MID-ATLANTIC
 JACKSONVILLE, NC

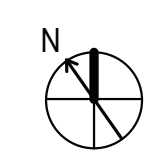
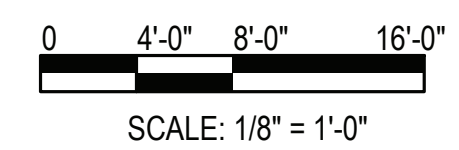
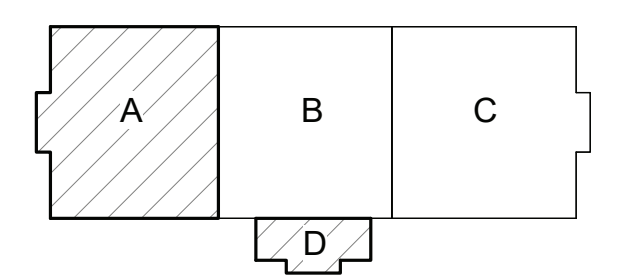
ROICC FLORENCE CAMP LEJEUNE
 MCB CAMP LEJEUNE
 P1338F II MEF SIMULATION/TRAINING CENTER
 REPLACEMENT
 FIRE ALARM - FIRST FLOOR PLAN - AREA D

DEPARTMENT OF THE NAVY
 NAVAL FACILITIES ENGINEERING COMMAND
 JACKSONVILLE, NC

SCALE: AS NOTED
 EPROJECT NO.: 1500892
 CONSTR. CONTR. NO.: N40085-20-C-0059
 NAVFAC DRAWING NO.:
 SHEET OF

FA114

KEYPLAN



FILE NAME: BIM_360/HF PACKAGE 3P1338.MEF SIM CTR-1500892.F4

PLOTTED: 01/12/2021 7:34:44 AM

D

C

B

A

UNCLASSIFIED

DP2 SUBMISSION - P1338 BUILDING - PRE-FINAL SUBMISSION

1

2

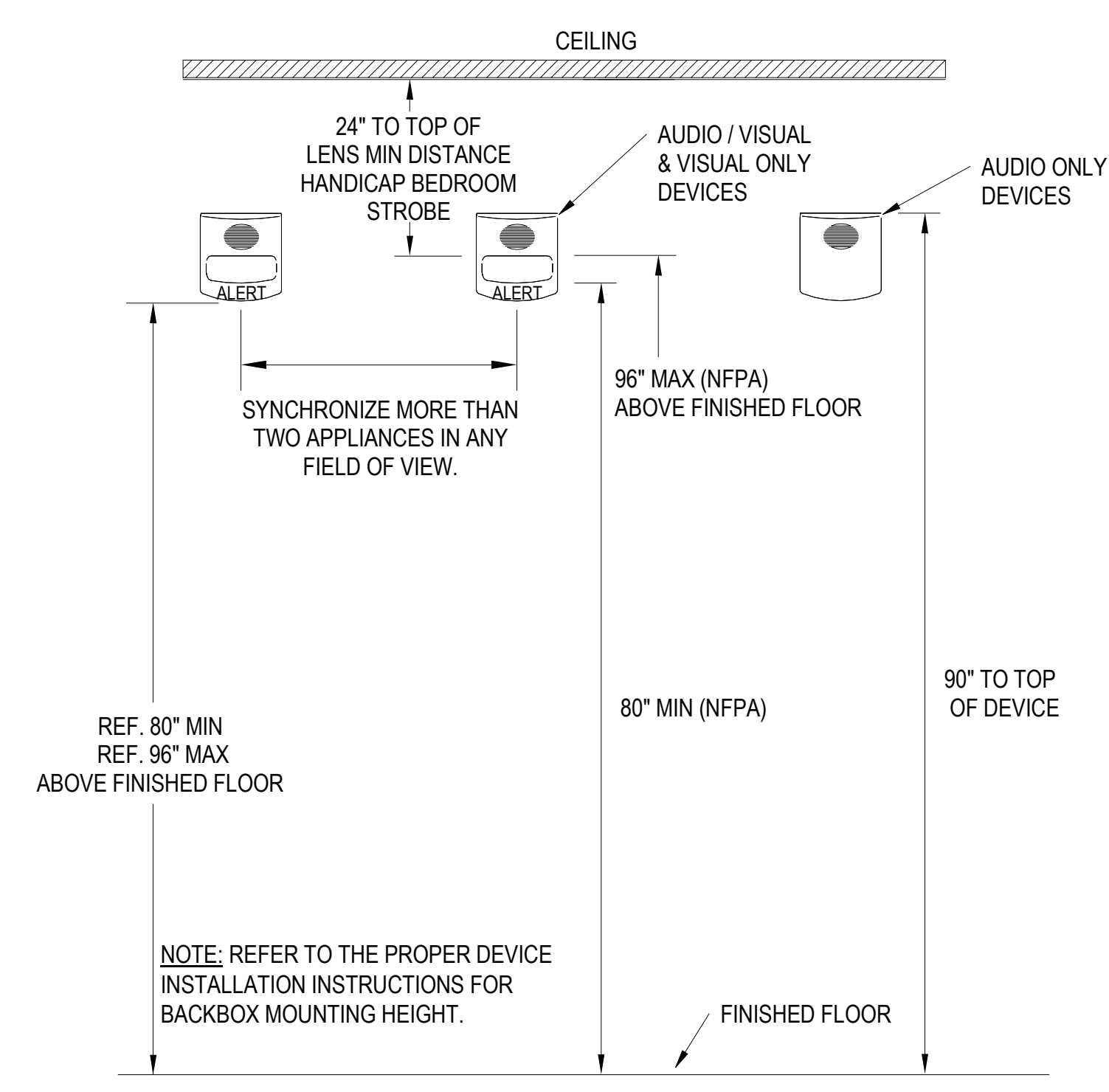
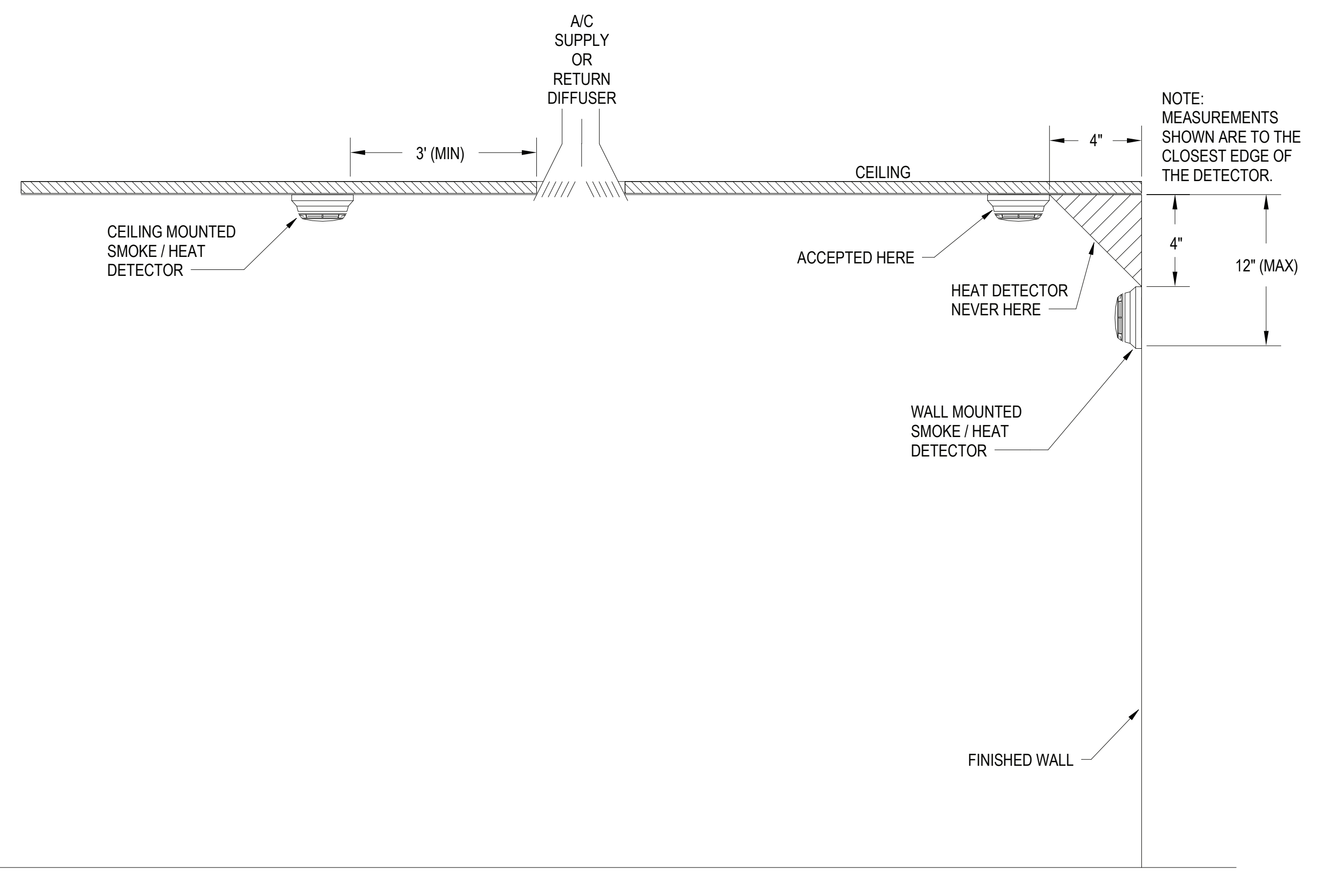
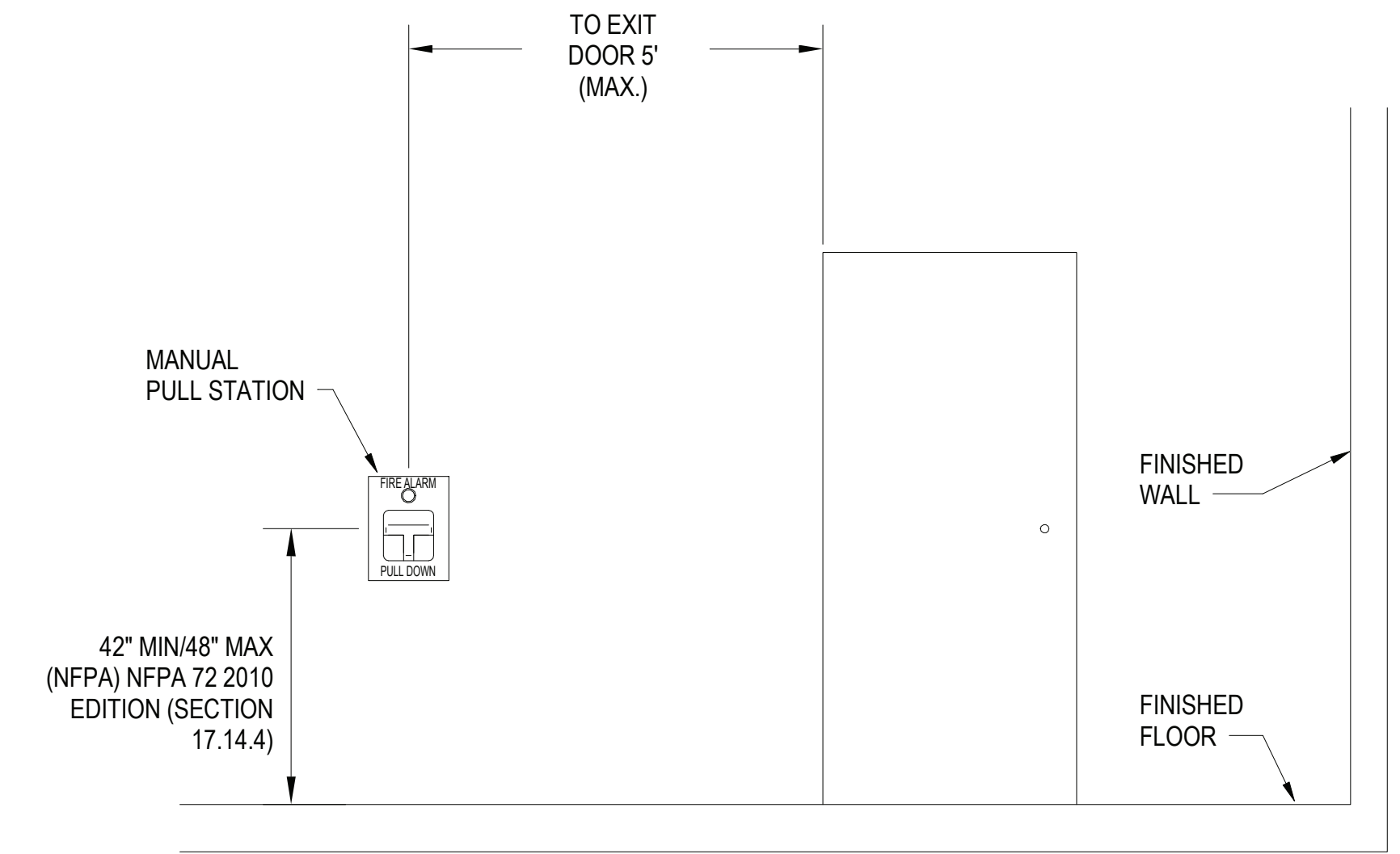
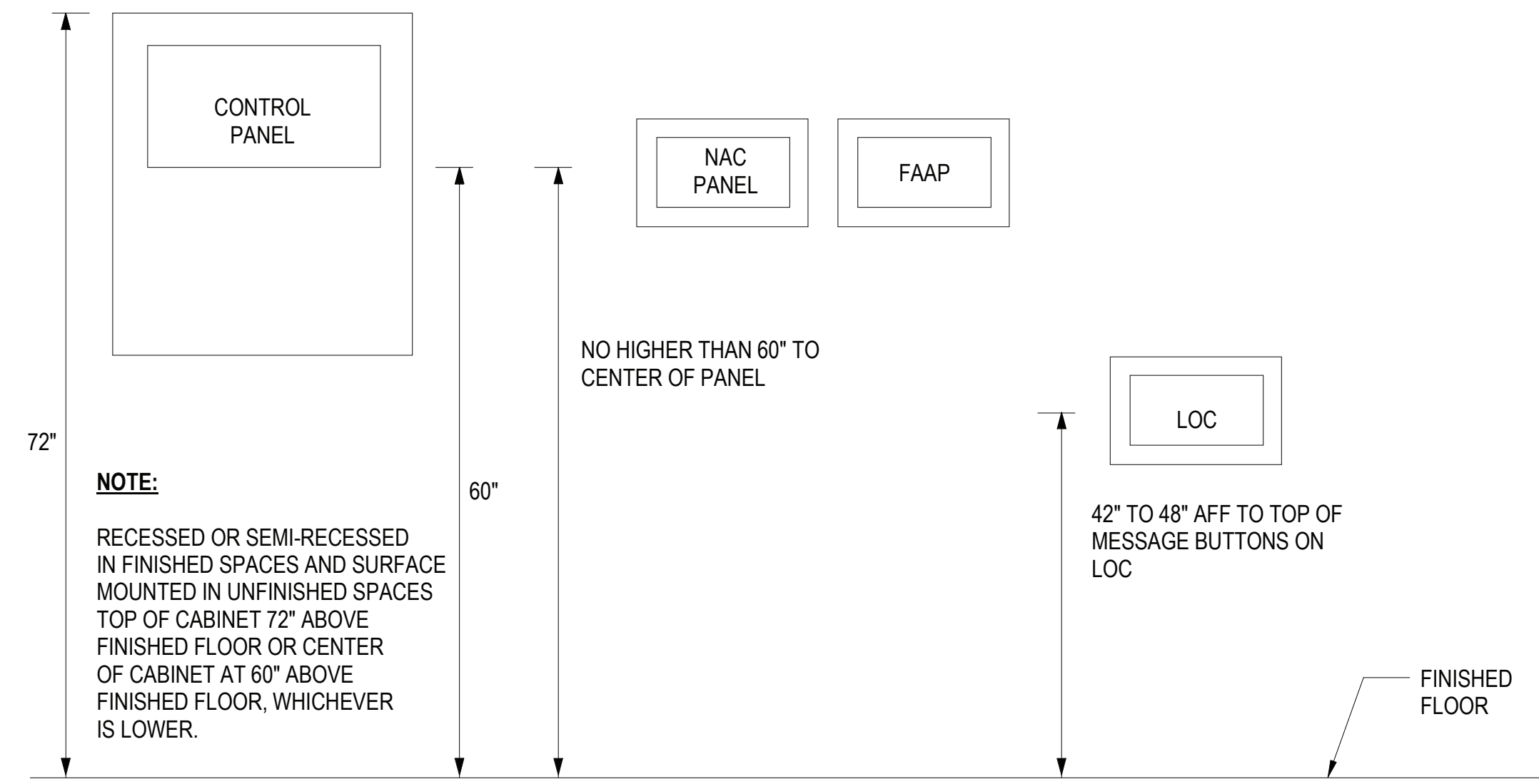
3

4

5

GENERAL NOTES

1. REFER TO SHEET FA001 FOR GENERAL NOTES AND SYMBOLS.



FILE NAME: BIM_360/HF PACKAGE 3PT1338.MEF SIM CTR-150082.F4
PLOTTED: 01/12/2021 7:34:44 AM

APPR	
DATE	
DESCRIPTION	
SYM	
SYMBOL	
PRELIMINARY FOR REFERENCE ONLY	
Michael Baker INTERNATIONAL 100 AIRSIDE DRIVE MOON TOWNSHIP, PA 15108 APPROVED	
FOR COMMANDER NAVFAC	
ACTIVITY MARINE CORPS BASE CAMP LEJEUNE	
SATISFACTORY TO DATE	
DES JAM	DRW ADH
CHK DJW	PM
BRANCH MANAGER	
CHIEF ENGINEER	
FIRE PROTECTION	
DEPARTMENT OF THE NAVY NAVAL FACILITIES ENGINEERING COMMAND ~ MID-ATLANTIC ROSC FLORENCE CAMP LEJEUNE JACKSONVILLE, NC JACKSONVILLE, NC P1338F II MEF SIMULATION/TRAINING CENTER REPLACEMENT FIRE ALARM - DETAILS	
SCALE:	AS NOTED
EPROJCT NO.:	150082
CONSTR. CONTR. NO.:	N40085-20-C-0059
NAVFAC DRAWING NO.:	
SHEET	OF
FA501	

UNCLASSIFIED

DP2 SUBMISSION - P1338 BUILDING - PRE-FINAL SUBMISSION