

FIRE ALARM LEGEND	
SYMBOL	DESCRIPTION
	FIRE ALARM CONTROL PANEL
	FIRE ALARM ANNUCIATOR PANEL
	DOCUMENT CABINET
	DIGITAL ALARM COMMUNICATOR PANEL
	NOTIFICATION APPLIANCE CIRCUIT PANEL
	LOCAL OPERATING CONSOLE
	SURGE PROTECTION DEVICE
	CONTROL MODULE
	MONITOR MODULE
	MANUAL PULL STATION
	SMOKE DETECTOR / PHOTOELECTRIC
	SMOKE DETECTOR / IN DUCT
	CARBON MONOXIDE SENSOR
	AIR ASPIRATING SMOKE DETECTOR
	COMBINATION SPEAKER / VISIBLE WALL MOUNTED. CD INDICATES CANDELA RATING.
	COMBINATION SPEAKER / VISIBLE CEILING MOUNTED. CD INDICATES CANDELA RATING.
	SPEAKER WALL MOUNTED.
	SPEAKER CEILING MOUNTED.
	FIRE ALARM WALL MOUNTED VISUAL ONLY STROBE. CD INDICATES CANDELA RATING.
	FIRE ALARM CEILING MOUNTED VISUAL ONLY STROBE. CD INDICATES CANDELA RATING.
	FLOW SWITCH
	TAMPER SWITCH
	BELL - VIBRATING

**FIRE ALARM AND MASS NOTIFICATION GENERAL NOTES**

1. PROVIDE A COMPLETE, ADDRESSABLE, FIRE ALARM AND MASS NOTIFICATION SYSTEM IN THE FACILITY. FIRE ALARM AND MASS NOTIFICATION SYSTEM MUST BE DESIGNED AND INSTALLED TO MEET THE REQUIREMENTS OF UFC 3-600-01, FC 3-600-09N, UFC 4-021-01, NFPA 70, NFPA 72, AND NFPA 101. SYSTEM SHALL BE SIMPLEX, NOTIFIER, OR FIRE-LITE.
2. IT IS THE INTENT OF THESE DOCUMENTS TO PROVIDE DESIGN, MATERIALS, AND EQUIPMENT FOR A TOTALLY FUNCTIONING AND OPERATING FIRE ALARM AND MASS NOTIFICATION SYSTEMS, INCLUDING THE PROPER INTERFACING AND COORDINATION WITH OTHER BUILDING SYSTEMS.
3. THE GENERAL CHARACTER AND SCOPE OF THE WORK IS ILLUSTRATED IN THE SPECIFICATIONS AND THE DRAWINGS. THE SPECIFICATIONS AND DRAWINGS ARE DIVIDED INTO SEVERAL SECTIONS FOR CONVENIENCE ONLY AND THE CONTRACT DOCUMENTS MUST BE CONSIDERED AS A WHOLE. THE CONTRACTOR MUST BE RESPONSIBLE FOR THE COORDINATION OF ALL TRADES, SUBCONTRACTORS, AND VENDORS ENGAGED IN THIS WORK.
4. THESE DRAWINGS DEPICT GENERAL LOCATIONS OF FIRE ALARM AND MASS NOTIFICATION SYSTEM EQUIPMENT AND FIELD DEVICES. FINAL LOCATIONS, QUANTITIES, APPLIANCE RATINGS, ETC. MUST BE PROVIDED BY THE INSTALLING CONTRACTOR IN ACCORDANCE WITH THE APPLICABLE CODES, STANDARDS, AND CONTRACT DOCUMENTS.
5. THE CONTRACTOR MUST OBTAIN REQUIRED PERMITS AND APPROVALS AS REQUIRED BY THE AUTHORITY HAVING JURISDICTION. THE CONTRACTOR MUST PAY FOR AND SECURE PERMITS AND FEES FOR FIRE PROTECTION SYSTEMS WORK.
6. PROVIDE FINAL SYSTEM LAYOUT DRAWINGS INCLUDING BATTERY CALCULATIONS AND VOLTAGE DROP CALCULATIONS AND OBTAIN APPROVAL OF THE FIRE MARSHAL AND ALL AUTHORITIES HAVING JURISDICTION. BATTERY CALCULATIONS MUST INCLUDE 20 PERCENT SAFETY MARGIN TO THE CALCULATED AMP-HOUR RATING PER NFPA 72. A BILL OF MATERIAL AND CONTACT ID POINT DESCRIPTION TABLE MUST BE INCLUDED IN THE FIRE ALARM AS-BUILT DRAWINGS.
7. PROVIDE FIRE ALARM AND MASS NOTIFICATION SPEAKERS AND STROBES THROUGHOUT THE PROJECT AREAS. PROVIDE ADDITIONAL NOTIFICATION APPLIANCE CIRCUIT (NAC) PANELS AS REQUIRED. EACH NAC LOADING MUST NOT EXCEED 75% OF ITS RATED OUTPUT.
8. PROVIDE DUCT SMOKE DETECTORS IN ALL SUPPLY DUCTS OF AIR HANDLING UNITS GREATER THAN 2,000 CFM. PROVIDE RELAYS FOR SHUT DOWN OF ASSOCIATED AIR HANDLING UNITS.
9. PROVIDE MONITOR MODULES, TAMPER AND FLOW SWITCHES FOR THE SPRINKLER RISER AND CONTROL VALVES.
10. WIRING FOR DEVICES MUST BE CLASS AS. PROVIDE ALL FIRE ALARM CIRCUITS IN ELECTRICAL METALLIC TUBING (EMT) OR INTERMEDIATE METAL CONDUIT (IMC).
11. ALL RACEWAYS MUST BE FACTORY PAINTED RED. FLEXIBLE METALLIC CONDUIT (FMC) SHALL NOT EXCEED 6 FEET AND MUST ONLY BE PERMITTED FOR CONNECTIONS TO JUNCTION BOXES TO FIELD DEVICES. PROVIDE A RACEWAY LISTED FOR THE INSTALLATION IN WET LOCATIONS, SUCH AS RIGID METALLIC CONDUIT (RMC) AND LIQUID TIGHT FLEXIBLE METAL CONDUIT (LFMC). WET LOCATIONS ARE CONSIDERED ANY LOCATION WITHIN A 5 FOOT RADIUS OF FIRE SUPPRESSION EQUIPMENT AS DEFINED BY NFPA 70.
12. DEVICES MUST BE FACTORY FINISHED WHITE.
13. PROVIDE RECHARGEABLE SEALED LEAD ACID TYPE BATTERIES TO OPERATE THE FIRE ALARM SYSTEM UNDER SUPERVISORY CONDITIONS FOR 48 HOURS AND AUDIBLE AND ALARM DEVICES FOR AN ADDITIONAL 15 MINUTES OR 60 MINUTES FOR THE MASS NOTIFICATION SYSTEM IMMEDIATELY UPON LOSS OF POWER, WHICHEVER IS GREATER.
14. INSTALLING CONTRACTOR MUST COORDINATE WITH MECHANICAL, ELECTRICAL AND OTHER TRADES TO FACILITATE INSTALLATION THAT IS COORDINATED AND CONSISTENT WITH BUILDING DESIGN, USE AND INTENT.
15. COORDINATE FINAL SYSTEM TESTING WITH OTHER CONTRACTORS TO PROVIDE FULL SYSTEM OPERATION AT TIME OF TESTING.
16. THE FIRE PROTECTION CONTRACTOR MUST BE RESPONSIBLE FOR SCHEDULING AND PERFORMING INSPECTIONS AND TESTS AS REQUIRED BY THE CONTRACTING OFFICER.
17. FLOOR AND WALL CONDUIT PENETRATIONS MUST BE SLEEVED AND SEALED AS REQUIRED.
18. PENETRATIONS OF THE BUILDING AIR BARRIER MUST BE SEALED TO MAINTAIN THE INTEGRITY OF THE AIR BARRIER.
19. CONDUIT SIZE AND PERCENTAGE OF FILL TO BE DETERMINED BY INSTALLING CONTRACTOR AND MUST COMPLY WITH APPLICABLE STANDARDS AND SYSTEM MANUFACTURER'S REQUIREMENTS.
20. CONDUIT AND WIRING MUST BE CONCEALED ABOVE CEILINGS IN FINISHED AREAS AND AREAS WITH DROPPED CEILINGS. CONDUIT AND WIRING INSTALLED ABOVE CEILINGS MUST NOT INTERFERE WITH THE REMOVAL OF THE CEILING TILES, AND HVAC UNIT AIR FILTERS. IN AREAS WITHOUT CEILING, CONDUIT AND WIRING MUST BE INSTALLED AS TIGHT AS POSSIBLE TO UNDERSIDE OF FLOOR SLAB, UNLESS OBSTRUCTIONS REQUIRE OTHERWISE.
20. FIRE ALARM WIRING MUST NOT BE INSTALLED IN THE SAME CONDUITS OR JUNCTION BOXES AS LIGHTING, POWER OR OTHER WIRING.
21. RUN WIRING TO CONTROL PANELS IN THE VERTICAL OR HORIZONTAL PLANE, MAKE TURNS AT 90 DEGREE ANGLES, AND TIGHTLY BUNDLE, WRAP, AND IDENTIFY CONDUCTORS INDIVIDUALLY WITH PERMANENT MARKINGS.
22. PULL CONDUCTORS SPLICE FREE. THE USE OF WIRE NUTS, CRIMPED CONNECTORS, OR TWISTING OF CONDUCTORS IS PROHIBITED.
23. TERMINATIONS MUST BE AT A TERMINAL STRIP. DEVICES MUST HAVE SCREW TERMINALS.
24. SIGNALING LINE AND INITIATING DEVICE CIRCUITS MUST BE MINIMUM 16 GAUGE WIRE.
25. WALL ADDRESSABLE CONTROL MODULES AND ADDRESSABLE MONITOR MODULES MUST BE LOCATED WITHIN 10 FEET OF THE DEVICES BEING MONITORED. DUCT SMOKE DETECTORS MUST BE WITHIN 3 FEET OF ADDRESSABLE RELAY.
26. CONTRACTOR MUST PROVIDE ADEQUATE AUDIBLE NOTIFICATION DEVICES TO MEET THE AUDIBILITY AND INTELLIGIBILITY REQUIREMENTS OF NFPA 72 AND UFC 4-021-01. THE MINIMUM REQUIRED COMMON INTELLIGIBILITY SCALE IS 0.7.
27. PROVIDE HORN SPEAKERS MOUNTED ON THE EXTERIOR OF THE BUILDING IN ADDITION TO PROVIDE NOTIFICATION OF ANY AREAS COMMONLY USED BY BUILDING OCCUPANTS. AREAS INCLUDE COURTYARDS, COVERED BREAK AREAS, DESIGNATED SMOKING AREAS, AND SIDEWALKS LEADING FROM THE BUILDING'S EXIT DOORS TO A PUBLIC STREET OR FROM PARKING AREAS FOR A DISTANCE UP TO 16 FEET FROM THE BUILDING.
28. PROVIDE VISIBLE NOTIFICATION APPLIANCES IN COMMON AND PUBLIC SPACES AS REQUIRED BY THE APPLICABLE CODES TO MEET VISIBLE SIGNALING INTENSITY REQUIREMENTS.
29. PROVIDE CLEAR STROBE MARKED "ALERT" FOR FIRE ALARM AND MASS NOTIFICATION SYSTEM NOTIFICATIONS.
30. COORDINATE DUCT SMOKE DETECTION WITH MECHANICAL DESIGN CONTRACTOR. DUCT SMOKE DETECTOR REMOTE LAMPS AND TEST STATION MUST BE WALL MOUNTED, ACCESSIBLE, VISIBLE, AND PERMANENTLY LABELED. THE DUCT DETECTORS MUST RECEIVE THEIR POWER AND RESET FROM THE FIRE ALARM CONTROL UNIT.
31. PROVIDE REMOTE TEST LAMPS FOR ANY INACCESSIBLE DEVICES.
32. PROVIDE SURGE PROTECTION FOR CIRCUITS THAT ENTER OR EXIT A BUILDING.
33. PROVIDE WEATHERPROOF DEVICES AS REQUIRED AND AS INDICATED.
34. DEVICES MOUNTED IN SUSPENDED CEILING MUST BE MOUNTED IN THE CENTER OF THE CEILING TILE.
35. PROVIDE A DOCUMENTATION CABINET ADJACENT TO FIRE ALARM CONTROL PANEL. CABINET MUST BE STEEL WITH LOCKING. HINGE MOUNTED DOOR PROMINENTLY LABELED "SYSTEM RECORD DOCUMENTS". CABINET MUST STORE LIFE SAFETY, FIRE ALARM, AND SPRINKLER AS-BUILT DRAWINGS AND NFPA 72 RECORD OF COMPLETION IN PAPER FORMAT. CD/DVD OF SITE-SPECIFIC SOFTWARE, FIRE ALARM AND SPRINKLER AS-BUILT DRAWINGS, NFPA 72 RECORD OF COMPLETION, AND OPERATIONS AND MAINTENANCE MANUALS MUST BE STORED IN A CD JEWEL CASE.
36. PROVIDE A PARTS BOX ADJACENT TO THE FMCP. CABINET MUST BE STEEL, LOCKING, WITH HINGE-MOUNTED DOOR, KEYPED THE SAME AS THE FMCP. CABINET MUST INCLUDE SPARE PARTS AS DEFINED IN THE PROJECT SPECIFICATIONS, PLUS FOUR (4) FUSES FOR EACH FUSED CONDUIT.
37. DUAL-ACTION, MANUAL FIRE PULL STATIONS MUST BE PROVIDED WITHIN 5 FEET OF EVERY EXIT OF THE BUILDING. MANUAL PULL STATIONS MUST BE RESET WITH THE USE OF A KEY ONLY. USE OF A WRENCH, HEX KEY, ALLEN KEY, OR ALLEN WRENCH TO OPEN A MANUAL PULL STATION MUST NOT BE PERMITTED.
38. WATER FLOW ALARM AND VALVE TAMPER SWITCHES ATTACHED TO THE BUILDING WET-PIPE SPRINKLER SYSTEM TO PROVIDE REQUIRED SUPERVISION MUST BE CONNECTED TO THE FIRE ALARM SYSTEM.
39. INSTALL A POINT REPORTING DIGITAL ALARM COMMUNICATOR TRANSMITTER THAT IS COMPATIBLE WITH THE SUR-GARD SYSTEM III MULTI-PLATFORM DIGITAL TELEPHONE RECEIVER AND IS PROGRAMMED TO REPORT BY POINTS VIA CONTACT ID PROTOCOL. PROVIDE TWO (2) CAT 6 UTP CABLES INSIDE 1-INCH CONDUIT FROM THE FMCP TO THE TELEPHONE EQUIPMENT ROOM.
40. THE GOVERNMENT WILL INSTALL THE TRX-401 MASS NOTIFICATION TRANSCEIVER. THE CONTRACTOR MUST PROVIDE CONDUIT FOR MOUNTING THE MASS NOTIFICATION ANTENNA, CONDUIT FOR THE MASS NOTIFICATION ANTENNA CABLE, CONDUIT TO CONNECT THE TRANSCEIVER TO THE FIRE ALARM CONTROL PANEL, AND 120V POWER FOR THE TRANSCEIVER.
41. PROVIDE AND ATTACH A LEGIBLE, TYPED LABEL ON ALL ADDRESSABLE DEVICES TO INDICATE ITS ADDRESS. FOR ANY DEVICE LOCATED ABOVE A FALSE CEILING, CONTRACTOR MUST PROVIDE A LEGIBLE, TYPED LABEL ATTACHED TO THE CEILING GRID THE DEVICE NOMENCLATURE AND ADDRESS.
42. PROVIDE AN AIR ASPIRATING SMOKE DETECTOR FOR PROTECTION OF THE SERVER ROOMS 304A AND 304B.

FILE NAME: BIM360/HF PACKAGE 3P1338.MEF\_S1M\_CTR-1590892.F.plt  
 PLOTTED: 9/12/2021 4:15:59 PM

DEPARTMENT OF THE NAVY  
 NAVAL FACILITIES ENGINEERING SYSTEMS COMMAND  
 ATLANTIC DESIGN AND CONSTRUCTION  
 MCB CAMP LEJEUNE  
 JACKSONVILLE, NC  
 P1338F II MEF SIMULATION/TRAINING CENTER  
 REPLACEMENT  
 FIRE ALARM - GENERAL NOTES, ABBREVIATIONS, & SYMBOLS

APPR	DATE
SYN	DESCRIPTION
100 AIRSIDE DRIVE MOON TOWNSHIP, PA 15108 A/E IN/PS APPROVED	
FOR COMMANDER NAVFAC ACTIVITY MARINE CORPS BASE CAMP LEJEUNE	
SATISFACTORY TO DATE DES JAM   DRW ADH   CHK DJW	
PM BRANCH MANAGER CHIEF ENGINEER FIRE PROTECTION	
NAVAL FACILITIES ENGINEERING SYSTEMS COMMAND ATLANTIC DESIGN AND CONSTRUCTION JACKSONVILLE, NC P1338F II MEF SIMULATION/TRAINING CENTER REPLACEMENT FIRE ALARM - GENERAL NOTES, ABBREVIATIONS, & SYMBOLS	
SCALE:	AS NOTED
EPROJECT NO.:	1590892
CONSTR. CONTR. NO.:	N40085-20-C-0059
NAVFAC DRAWING NO.:	
SHEET	OF
<b>FA001</b>	

D

C

B

A

1

2

3

4

5

UNCLASSIFIED

UNCLASSIFIED

	A	B	C	D	E	F	G	H	I	J	K	L	M	N	P	Q
ALARM CONDITIONS	1	X		X	X						X		X		X	
	2	X		X	X					X		X		X		
	3		X				X	X								
	4		X													
	5		X				X									
	6	X			X	X				X	X	X	X	X	X	X
	7	X			X	X			X	X	X	X	X	X	X	X
	8	X			X	X					X	X	X	X		
TROUBLE CONDITIONS	9	X				X										
	10	X				X										
	11	X				X										
	12	X				X										
	13	X				X										
	14	X				X										
	15	X				X										
	16	X				X										
SUPERVISORY CONDITIONS	17		X				X									
	18		X				X									
	19		X	X		X				X	X	X				
	20		X	X		X				X	X	X				
	21		X	X		X				X	X	X				
	22		X	X		X				X		X				

**FIRE ALARM - SEQUENCE OF OPERATIONS**

**GENERAL NOTES**

1. REFER TO SHEET FA001 FOR GENERAL NOTES AND SYMBOLS.

SYMBOL	DESCRIPTION	DATE	APPROVED



**PRELIMINARY**  
FOR REFERENCE ONLY



**Michael Baker INTERNATIONAL**  
100 AIRSIDE DRIVE  
MOON TOWNSHIP, PA 15108  
APPROVED

FOR COMMANDER NAVFAC

ACTIVITY  
MARINE CORPS BASE  
CAMP LEJEUNE

SATISFACTORY TO DATE

DES JAM DRW ADH CHK DJW

PM

BRANCH MANAGER

CHIEF ENGINEER

FIRE PROTECTION

DEPARTMENT OF THE NAVY  
NAVAL FACILITIES ENGINEERING SYSTEMS COMMAND  
ATLANTIC DESIGN AND CONSTRUCTION

NAVFAC DRAWING NO.  
N40085-20-C-0059

SCALE: AS NOTED  
EPROJCT NO.: 1590892

CONSTR. CONTR. NO.  
N40085-20-C-0059

NAVFAC DRAWING NO.  
SHEET OF

PROJECT NO.: 1590892

CONSTR. CONTR. NO.  
N40085-20-C-0059

NAVFAC DRAWING NO.  
SHEET OF

PROJECT NO.: 1590892

CONSTR. CONTR. NO.  
N40085-20-C-0059

NAVFAC DRAWING NO.  
SHEET OF

**FA002**

DP2 SUBMISSION - P1338 BUILDING - PRE-FINAL SUBMISSION

UNCLASSIFIED

D

C

B

A

1

2

3

4

5

1

2

3

4

5

D

C

B

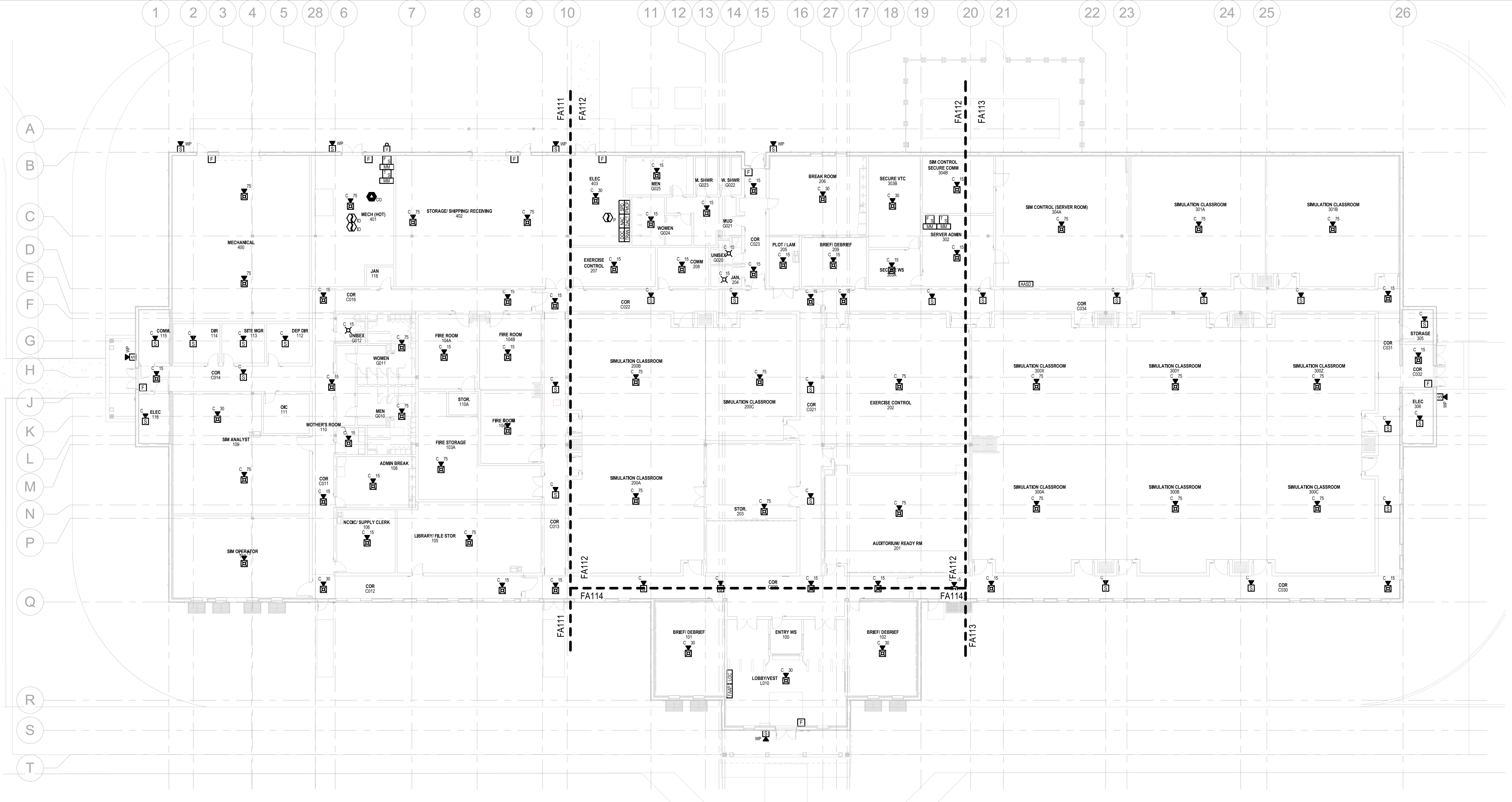
A

D

C

B

A



SEE FLOOR PLAN AREA SHEETS FOR INDIVIDUAL APPLIANCE PLACEMENT.

### FIRE ALARM - OVERALL - FIRST FLOOR PLAN

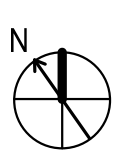
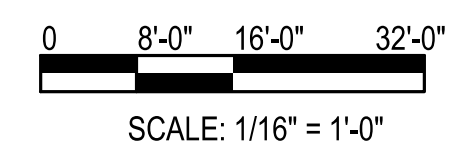
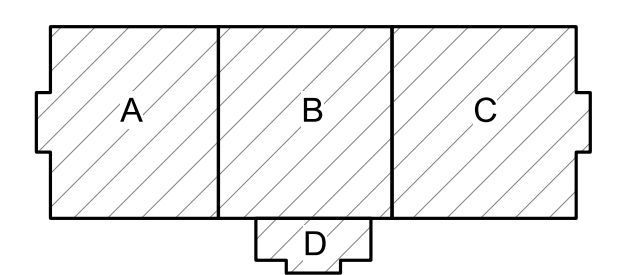
SCALE: 1/16" = 1'-0"

FILE NAME: BIM360/HF PACKAGE 3P1338.MEF SIM CTR-150082.F.pl  
PLOTTED: 9/12/2021 4:14:01 PM

#### GENERAL NOTES

1. REFER TO SHEET FA001 FOR GENERAL NOTES AND SYMBOLS.

#### KEYPLAN



DATE	APPR
SYMBOL	DESCRIPTION
<b>Michael Baker INTERNATIONAL</b> 100 AIRSIDE DRIVE MOON TOWNSHIP, PA 15108 APPROVED	
FOR COMMANDER NAVFAC	
ACTIVITY	
MARINE CORPS BASE CAMP LEJEUNE	
SATISFACTORY TO DATE	
DES JAM	DRW ADH
CHK DJW	
PM	
BRANCH MANAGER	
CHIEF ENGINEER	
FIRE PROTECTION	
NAVAL FACILITIES ENGINEERING SYSTEMS COMMAND JACKSONVILLE, NC NORFOLK, VA ATLANTIC DESIGN AND CONSTRUCTION MCB CAMP LEJEUNE <b>P1338F II MEF SIMULATION/TRAINING CENTER REPLACEMENT</b> <b>FIRE ALARM - OVERALL - FIRST FLOOR PLAN</b>	
DEPARTMENT OF THE NAVY NAVAL FACILITIES ENGINEERING SYSTEMS COMMAND ATLANTIC ATLANTIC DESIGN AND CONSTRUCTION MCB CAMP LEJEUNE <b>P1338F II MEF SIMULATION/TRAINING CENTER REPLACEMENT</b> <b>FIRE ALARM - OVERALL - FIRST FLOOR PLAN</b>	
SCALE: AS NOTED	
EPROJCT NO.: 1500892	
CONSTR. CONTR. NO. N40085-20-C-0059	
NAVFAC DRAWING NO.	
SHEET	OF
<b>FA110</b>	

DP2 SUBMISSION - P1338 BUILDING - PRE-FINAL SUBMISSION

UNCLASSIFIED

UNCLASSIFIED

1

2

3

4

5

1

2

3

4

5

D

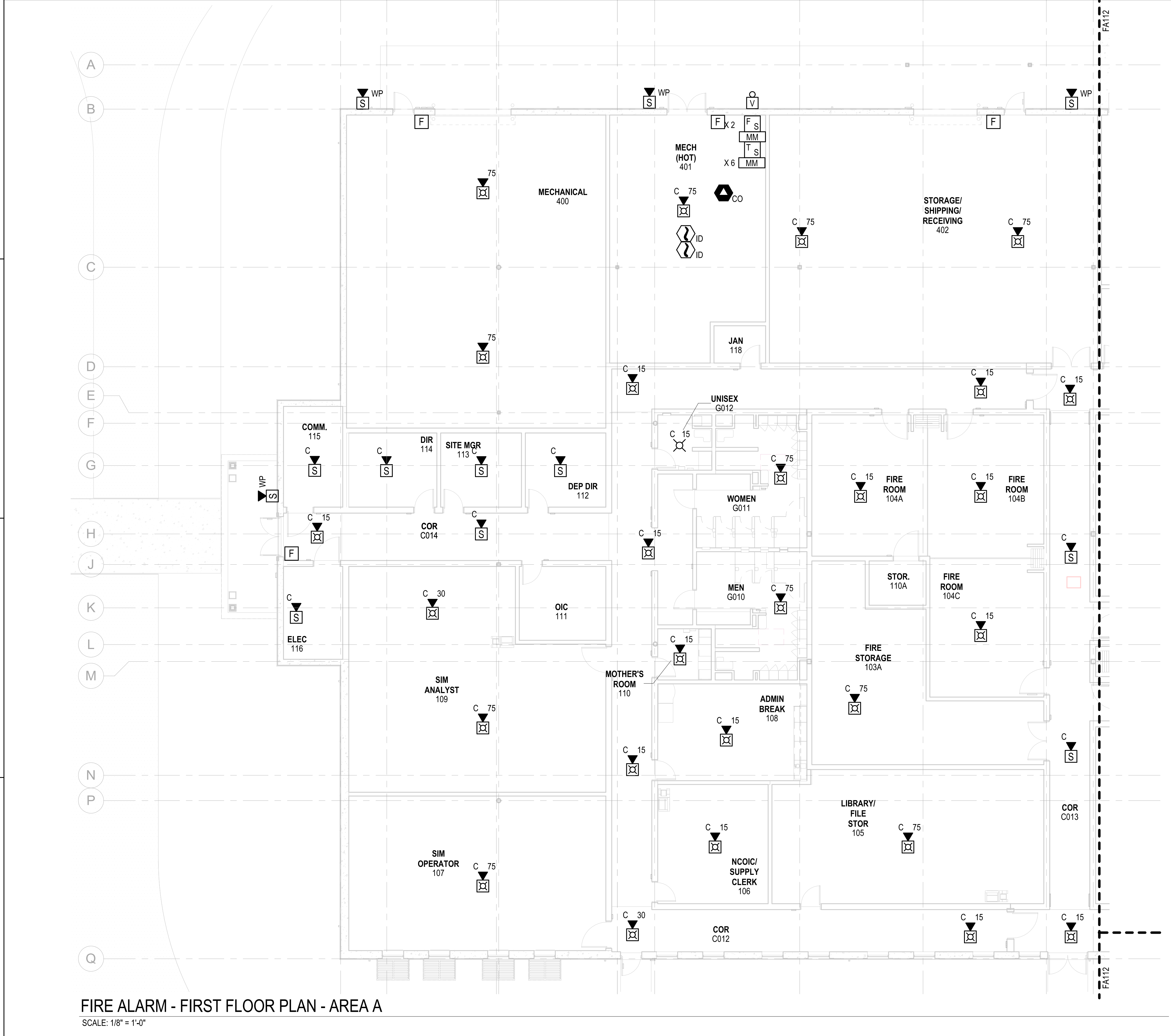
C

B

A

A  
B  
C  
D  
E  
F  
G  
H  
J  
K  
L  
M  
N  
P  
Q

FILE NAME: BIM360/HF PACKAGE 3P11338.MEF SIM CTR-4590892.F.plt  
PLOTTED: 9/11/2021 4:14:02 PM

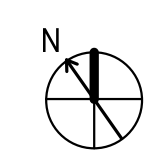
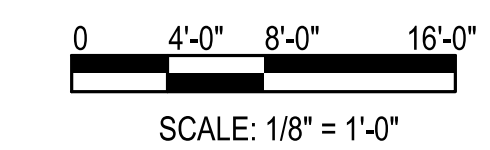
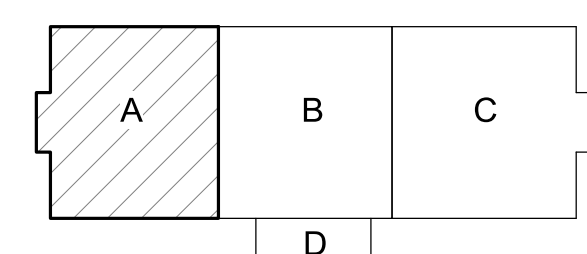


**FIRE ALARM - FIRST FLOOR PLAN - AREA A**  
 SCALE: 1/8" = 1'-0"

**GENERAL NOTES**

1. REFER TO SHEET FA001 FOR GENERAL NOTES AND SYMBOLS.

**KEYPLAN**



APPROVED	DATE	APPR
DESCRIPTION	DATE	APPR
SYMBOL	DESCRIPTION	SYMBOL
<b>PRELIMINARY</b> FOR REFERENCE ONLY		
<b>Michael Baker INTERNATIONAL</b> 100 AIRSIDE DRIVE MOON TOWNSHIP, PA 15108 APPROVED		
FOR COMMANDER NAVFAC ACTIVITY MARINE CORPS BASE CAMP LEJEUNE		
SATISFACTORY TO DATE DES JAM   DRW ADH   CHK DJW		
BRANCH MANAGER CHIEF ENGINEER FIRE PROTECTION		
NAVAL FACILITIES ENGINEERING SYSTEMS COMMAND ATLANTIC DESIGN AND CONSTRUCTION JACKSONVILLE, NC		
DEPARTMENT OF THE NAVY NAVAL FACILITIES ENGINEERING SYSTEMS COMMAND ATLANTIC ATLANTIC DESIGN AND CONSTRUCTION MCB CAMP LEJEUNE JACKSONVILLE, NC <b>P1338F II MEF SIMULATION/TRAINING CENTER REPLACEMENT</b> <b>FIRE ALARM - FIRST FLOOR PLAN - AREA A</b>		
SCALE: AS NOTED EPROJECT NO.: 1590892 CONSTR. CONTR. NO.: N40085-20-C-0059 NAVFAC DRAWING NO.: SHEET OF		
<b>FA111</b>		

FILE NAME: BIM\_360/HF PACKAGE 3P11338.MEF\_SIM\_CTR-150082-F.V4  
PLOTTED: 9/12/2021 4:14:04 PM

1  
A  
B  
C  
D  
E  
F  
G  
H  
J  
K  
L  
M  
N  
P  
Q

2  
A  
B  
C  
D  
E  
F  
G  
H  
J  
K  
L  
M  
N  
P  
Q

UNCLASSIFIED  
3  
A  
B  
C  
D  
E  
F  
G  
H  
J  
K  
L  
M  
N  
P  
Q

4  
A  
B  
C  
D  
E  
F  
G  
H  
J  
K  
L  
M  
N  
P  
Q

### GENERAL NOTES

1. REFER TO SHEET FA001 FOR GENERAL NOTES AND SYMBOLS.

### KEYNOTES

1. PROVIDE MONITORING OF THE ZONE CONTROL ASSEMBLY FOR THE SPRINKLER SYSTEM SERVING THE SERVER ROOM.



**PRELIMINARY**  
FOR REFERENCE ONLY



**Michael Baker INTERNATIONAL**  
100 AIRSIDE DRIVE  
MOON TOWNSHIP, PA 15108

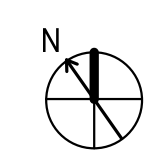
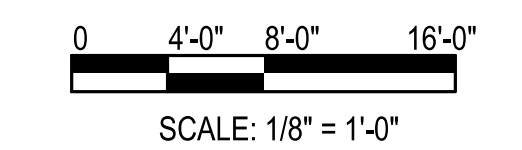
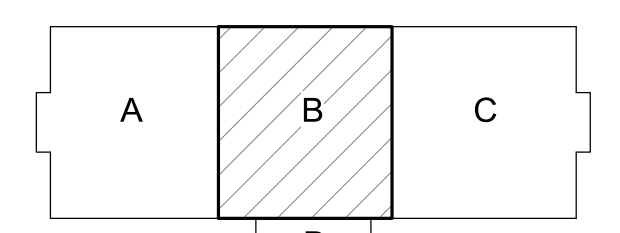
FOR COMMANDER NAVFAC  
ACTIVITY  
MARINE CORPS BASE  
CAMP LEJEUNE  
SATISFACTORY TO DATE  
DES JAM | DRW ADH | CHK DJW  
PM  
BRANCH MANAGER  
CHIEF ENGINEER  
FIRE PROTECTION

DEPARTMENT OF THE NAVY  
NAVAL FACILITIES ENGINEERING SYSTEMS COMMAND ATLANTIC  
ATLANTIC DESIGN AND CONSTRUCTION  
NAVFAC JACKSONVILLE  
M/CB CAMP LEJEUNE  
JACKSONVILLE, NC  
P1338F II MEF SIMULATION/TRAINING CENTER  
REPLACEMENT  
FIRE ALARM - FIRST FLOOR PLAN - AREA B

SCALE: AS NOTED  
EPROJCT NO.: 1500892  
CONSTR. CONTR. NO.: N40085-20-C-0059  
NAVFAC DRAWING NO.:  
SHEET OF

**FA112**

### KEYPLAN



**FIRE ALARM - FIRST FLOOR PLAN - AREA B**  
SCALE: 1/8" = 1'-0"

UNCLASSIFIED  
DP2 SUBMISSION - P1338 BUILDING - PRE-FINAL SUBMISSION

1

2

3

4

5

A

B

C

D

E

F

G

H

J

K

L

M

N

P

Q

SIM CONTROL (SERVER ROOM) 304A

SIMULATION CLASSROOM 301A

SIMULATION CLASSROOM 301B

1 AASD

COR C034

SIMULATION CLASSROOM 300Y

SIMULATION CLASSROOM 300Z

STORAGE 305

SIMULATION CLASSROOM 300X

SIMULATION CLASSROOM 300A

SIMULATION CLASSROOM 300B

SIMULATION CLASSROOM 300C

COR C030

ELEC 306

GENERAL NOTES

1. REFER TO SHEET FA001 FOR GENERAL NOTES AND SYMBOLS.

KEYNOTES

1. PROVIDE ASPIRATING SMOKE DETECTION SYSTEM IN ROOMS 304A AND 304B IN ACCORDANCE WITH SECTION 4-11.3 OF UFC 3-600-01.



PRELIMINARY FOR REFERENCE ONLY



Michael Baker INTERNATIONAL

FOR COMMANDER NAVFAC

ACTIVITY: MARINE CORPS BASE CAMP LEJEUNE

SATISFACTORY TO DATE

DES JAM DRW ADH CHK DJW

PM

BRANCH MANAGER

CHIEF ENGINEER

FIRE PROTECTION

NAVAL FACILITIES ENGINEERING SYSTEMS COMMAND NORFOLK, VA

NAVAL FACILITIES ENGINEERING SYSTEMS COMMAND ATLANTIC ATLANTIC DESIGN AND CONSTRUCTION

MCB CAMP LEJEUNE JACKSONVILLE, NC

P1338F II MEF SIMULATION/TRAINING CENTER REPLACEMENT

FIRE ALARM - FIRST FLOOR PLAN - AREA C

DP2 SUBMISSION - P1338 BUILDING - PRE-FINAL SUBMISSION

SCALE: AS NOTED

EPROJCT NO.: 1590892

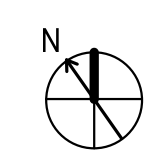
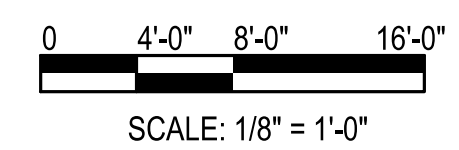
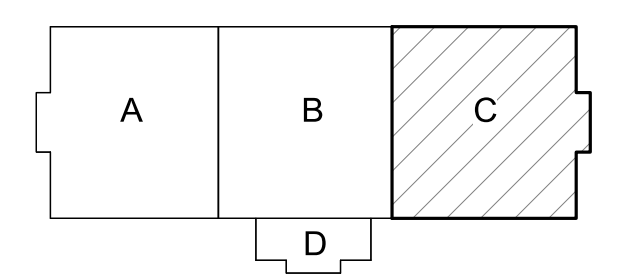
CONSTR. CONTR. NO. N40085-20-C-0059

NAVFAC DRAWING NO.

SHEET OF

FA113

KEYPLAN



FIRE ALARM - FIRST FLOOR PLAN - AREA C

SCALE: 1/8" = 1'-0"

FILE NAME: BIM360/HF PACKAGE 3P1338.MEF SIM CTR-1590892.rvt

PLOTTED: 9/11/2021 4:14:04 PM

1

2

3

4

5

D

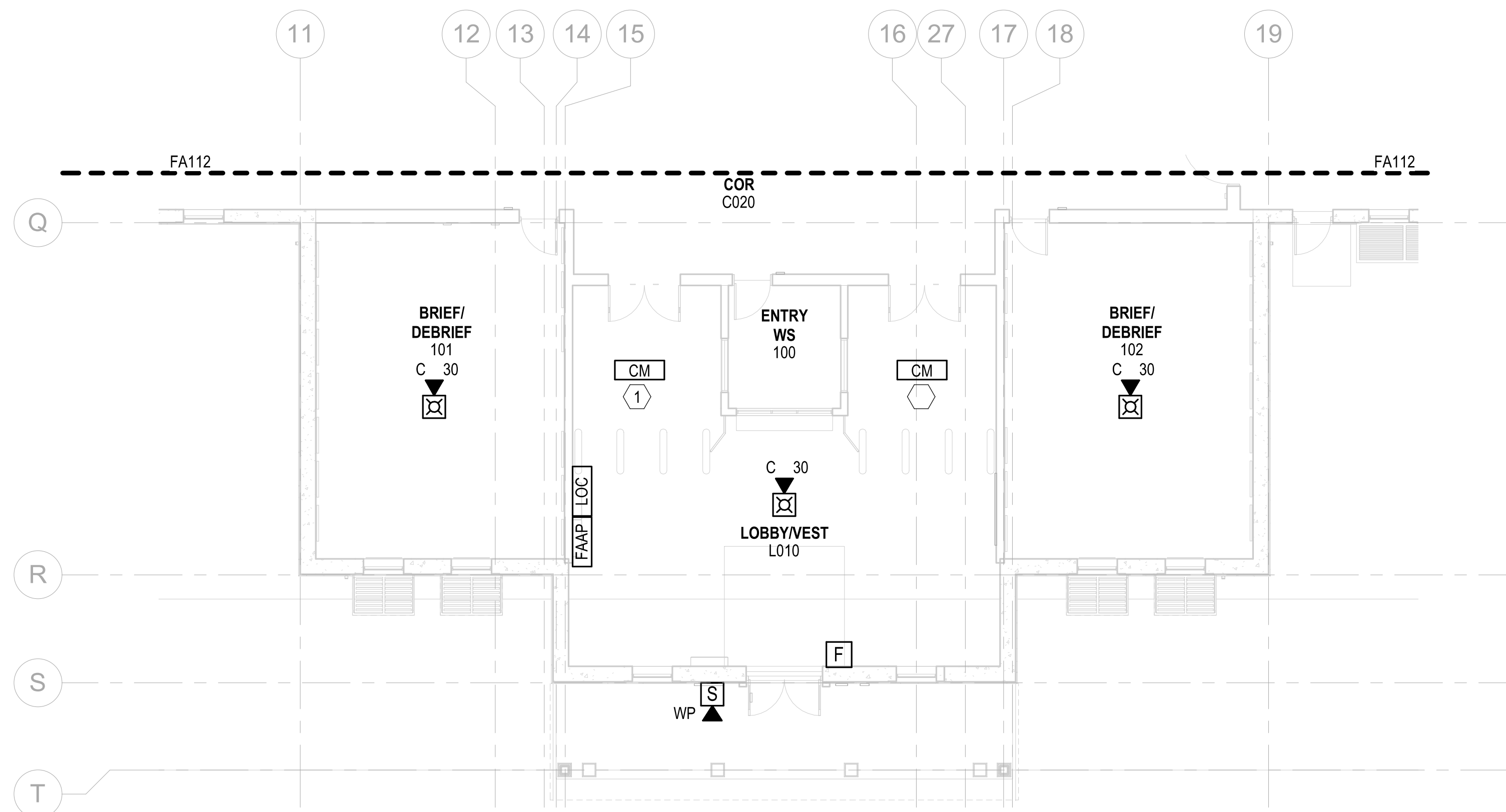
C

B

A

FILE NAME: BIM\_390/HF PACKAGE 3P1338\_MEF\_SIM\_CTR-1590892.FVT  
PLOTTED: 9/12/2021 4:14:05 PM

DEPARTMENT OF THE NAVY  
NAVAL FACILITIES ENGINEERING SYSTEMS COMMAND ATLANTIC  
ATLANTIC DESIGN AND CONSTRUCTION  
MCB CAMP LEJEUNE  
JACKSONVILLE, NC  
P1338F II MEF SIMULATION/TRAINING CENTER  
REPLACEMENT  
FIRE ALARM - FIRST FLOOR PLAN - AREA D  
DP2 SUBMISSION - P1338 BUILDING -PRE-FINAL SUBMISSION



**FIRE ALARM - FIRST FLOOR PLAN - AREA D**  
SCALE: 1/8" = 1'-0"

**GENERAL NOTES**

1. REFER TO SHEET FA001 FOR GENERAL NOTES AND SYMBOLS.

**KEYNOTES**

1. INTERFACE TURNSTILES TO RELEASE ON ALARM.



**PRELIMINARY**  
FOR REFERENCE ONLY



**Michael Baker INTERNATIONAL**  
100 AIRSIDE DRIVE  
MOON TOWNSHIP, PA 15108

FOR COMMANDER NAVFAC  
ACTIVITY  
MARINE CORPS BASE  
CAMP LEJEUNE

SATISFACTORY TO DATE

DES JAM | DRW ADH | CHK DJW

PM

BRANCH MANAGER

CHIEF ENGINEER

FIRE PROTECTION

NAVAL FACILITIES ENGINEERING SYSTEMS COMMAND  
NORFOLK, VA

JACKSONVILLE, NC

ATLANTIC DESIGN AND CONSTRUCTION

MCB CAMP LEJEUNE

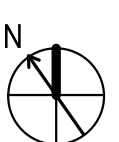
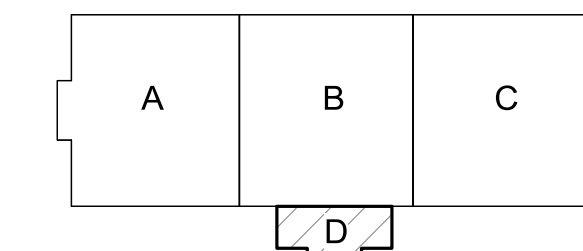
P1338F II MEF SIMULATION/TRAINING CENTER

REPLACEMENT

FIRE ALARM - FIRST FLOOR PLAN - AREA D

DP2 SUBMISSION - P1338 BUILDING -PRE-FINAL SUBMISSION

**KEYPLAN**



SCALE: AS NOTED

EPROJECT NO.: 1590892

CONSTR. CONTR. NO. N40085-20-C-0059

NAVFAC DRAWING NO.

SHEET OF

**FA114**

1

2

3

4

5

1

2

3

4

5

GENERAL NOTES

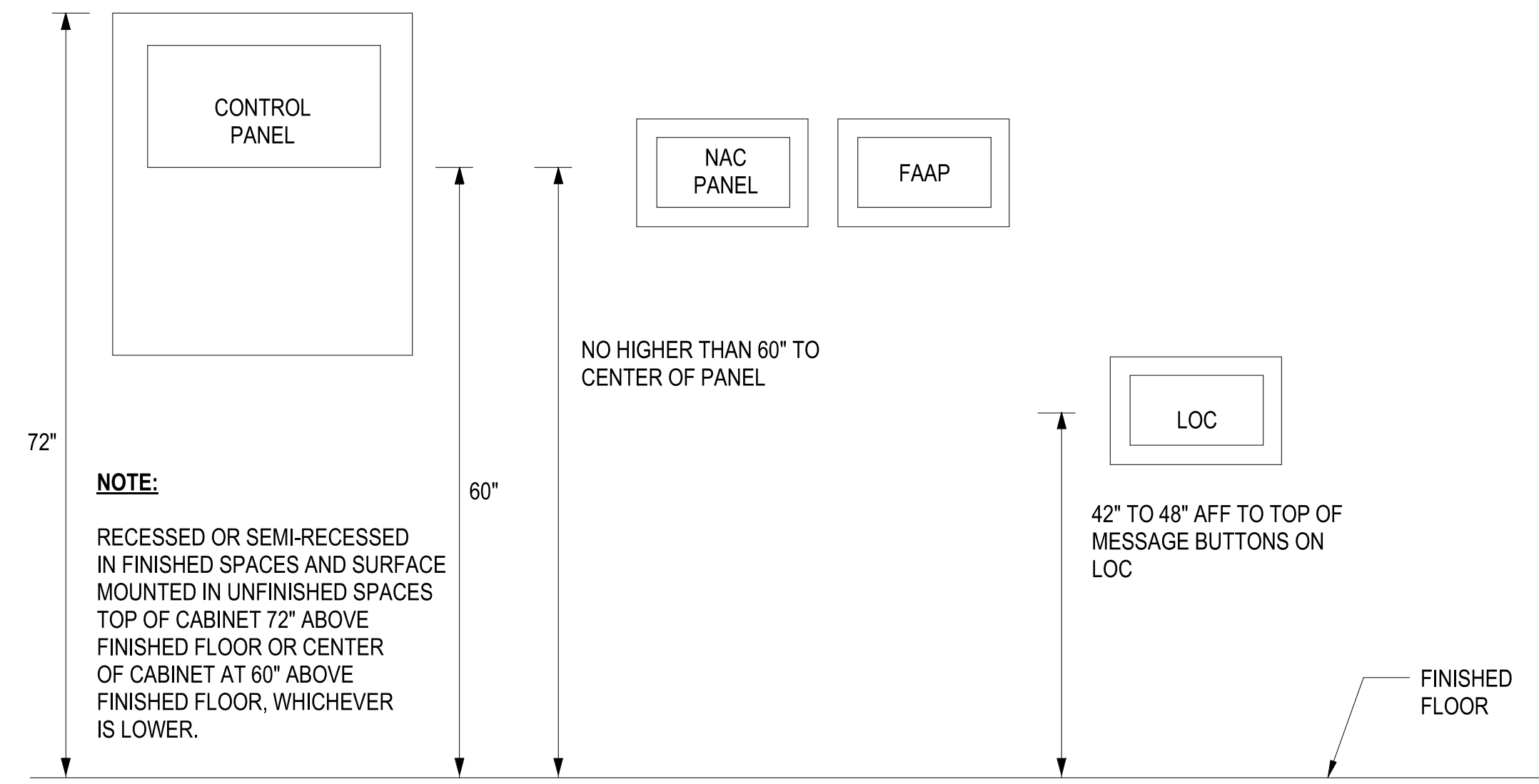
1. REFER TO SHEET FA001 FOR GENERAL NOTES AND SYMBOLS.

D

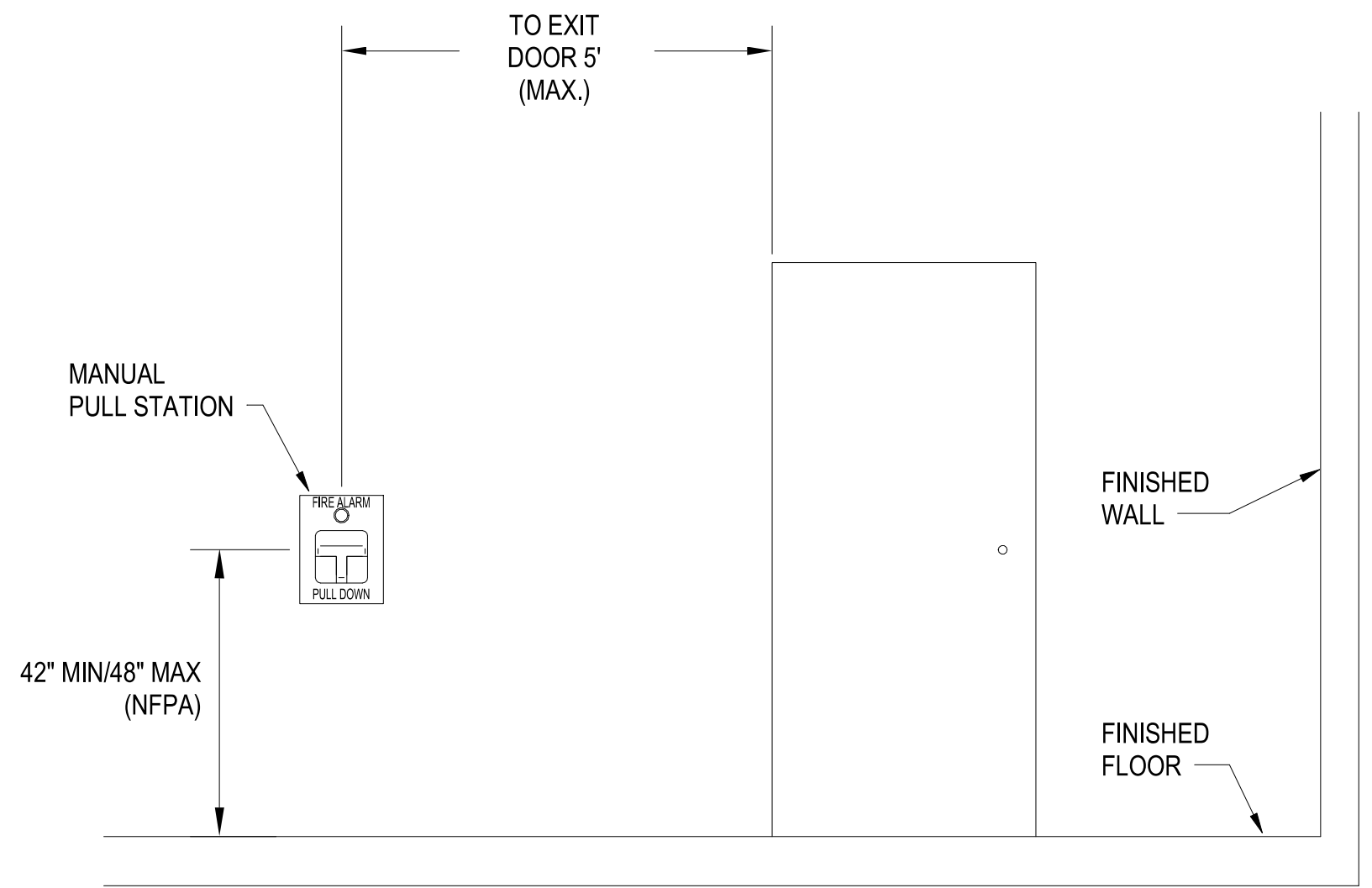
C

B

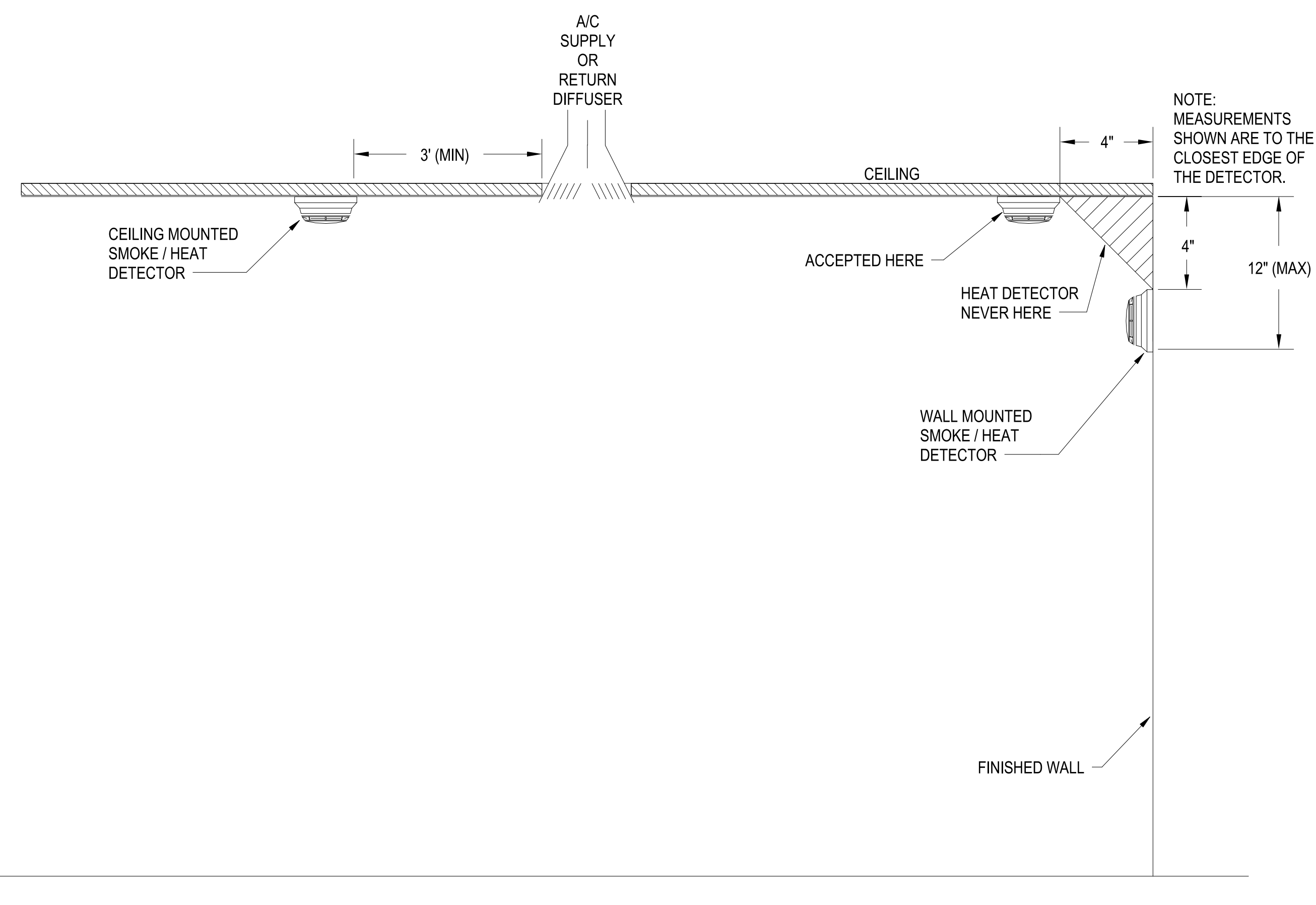
A



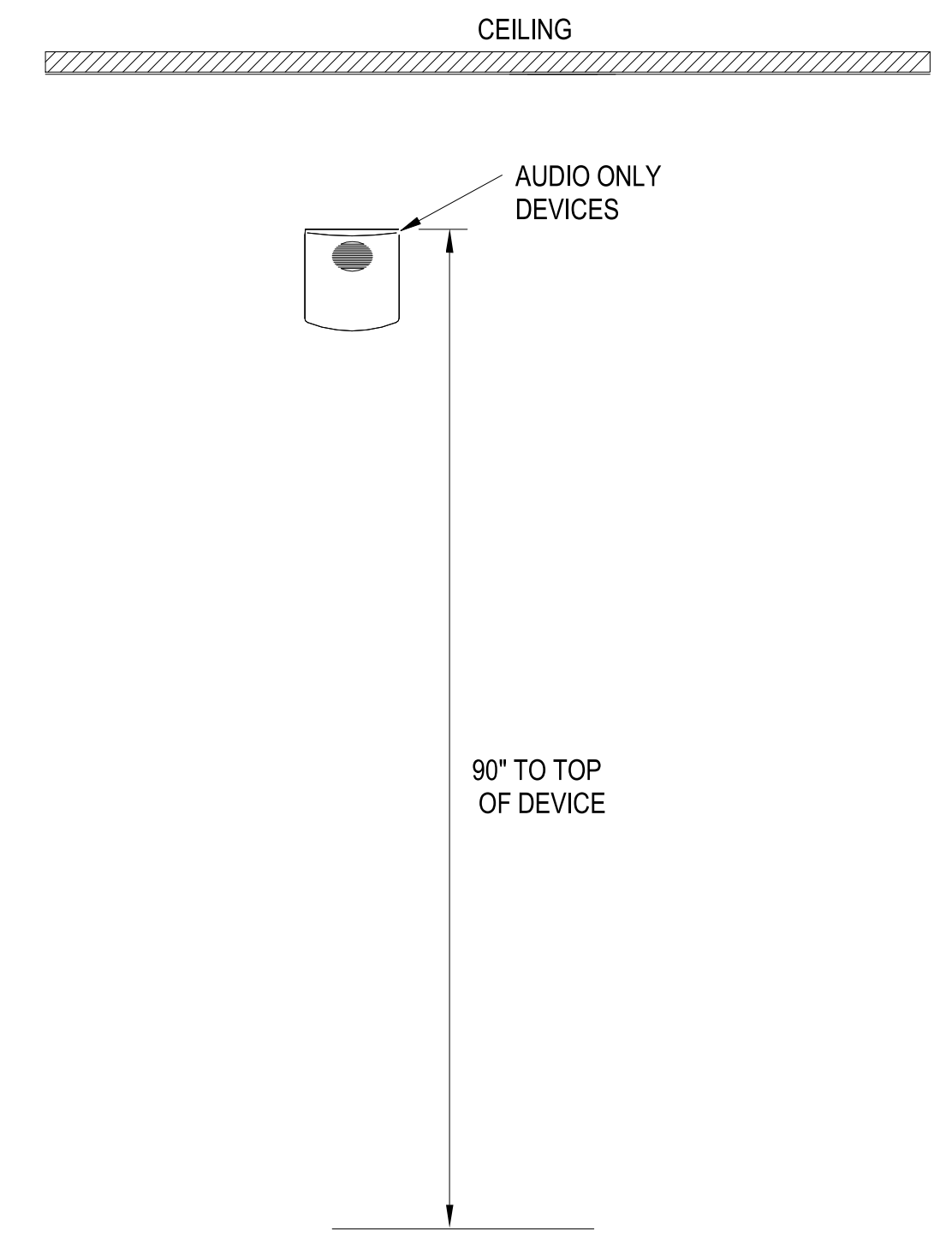
C1 FMCP, FAAP, NAC, AND LOC MOUNTING HEIGHTS  
SCALE: NTS



C3 PULL STATION INSTALLATION DETAIL  
SCALE: NTS



A1 SMOKE / HEAT DETECTOR INSTALLATION REQUIREMENTS  
SCALE: NTS



A3 AUDIBLE APPLIANCE DEVICE INSTALLATION DETAIL  
SCALE: NTS

D

C

UNCLASSIFIED

B

DP2 SUBMISSION - P1338 BUILDING - PRE-FINAL SUBMISSION



PRELIMINARY FOR REFERENCE ONLY



Michael Baker INTERNATIONAL  
100 AIRSIDE DRIVE  
MOON TOWNSHIP, PA 15108

FOR COMMANDER NAVFAC  
ACTIVITY: MARINE CORPS BASE CAMP LEJEUNE  
SATISFACTORY TO DATE  
DES JAM | DRW ADH | CHK DJW  
PM  
BRANCH MANAGER  
CHIEF ENGINEER  
FIRE PROTECTION

DEPARTMENT OF THE NAVY  
NAVAL FACILITIES ENGINEERING SYSTEMS COMMAND  
ATLANTIC DESIGN AND CONSTRUCTION  
NAVFAC JACKSONVILLE, NC  
NAVFAC JACKSONVILLE, NC  
P1338F II MEF SIMULATION/TRAINING CENTER REPLACEMENT  
FIRE ALARM - DETAILS

SCALE: AS NOTED  
EPROJCT NO.: 1500892  
CONSTR. CONTR. NO.: N40085-20-C-0059  
NAVFAC DRAWING NO.

SHEET OF  
**FA501**

PLOTTED: 9/11/2021 4:14:05 PM

FILE NAME: BIM\_360/HF PACKAGE 3P1338\_MEF\_SIM\_CTR-1500892.rvt

1

2

3

4

5



1

2

3

4

5

D

C

B

A

D

C

B

A

GENERAL NOTES

1. REFER TO SHEET FA001 FOR GENERAL NOTES AND SYMBOLS.

KEYNOTES

- 1 PROVIDE AUDIO INPUT AND CONTACT CLOSURE IN THE FMCP PANEL TO ACCEPT EXTERNAL SIGNAL FROM THE MNS TRANSCIEVER.
- 2 PROVIDE 3/4" RIGID METAL CONDUIT (RMC) BETWEEN THE FMCP PANEL AND MNS TRANSCIEVER PANEL.
- 3 PROVIDE DEDICATED WALL SPACE FOR 24"x24"x1" MOUNTING BOARD ADJACENT TO THE FMCP PANEL (WITHIN 15 FT MAX). ENSURE THE MOUNTING BOARD IS CLEARLY MARKED "FOR BASE-WIDE MNS USE".
- 4 PROVIDE 1-1/2" RIGID METAL CONDUIT.
- 5 PROVIDE 8"x8"x8" PULL BOX.
- 6 PROVIDE (2) 3/4-INCH ELECTRICAL METAL CONDUIT (EMT) WITH 18 AWG SHIELD AUDIO WIRE FROM THE NEMA-4 ENCLOSURE TO 2 DIFFERENT CENTRAL FACILITY LOCATIONS (DUTY ROOM, ADMINISTRATION AREA, CENTRAL HALLWAY -COORDINATE WITH THE BASE SECURITY FOR LOCATION). AT THESE LOCATIONS TERMINATE RMC IN A FLUSH MOUNTED 4"x4"x2" EMT BOX. ENSURE 2 CONDUIT RUNS AND THE EXIT FLUSH MOUNTED ENCLOSURES ARE LABELED "FOR MNS USE".
- 7 1-1/2" RMC FROM PULL BOX TO THE ROOF. MAXIMUM CONDUIT LENGTH TO THE ROOF TERMINATION IS 115 FT. TERMINATE THE TOP OF THE EXTERIOR RMC WITH UL LISTED WEATHERHEAD. PROVIDE 50 OHM, UMR-400 RF CABLE IN THE RMC. PROVIDE 3-FT CABLE LENGTH MAINTENANCE LOOP AT BOTH ENDS OF THE CABLE ROUTE AND TERMINATE ROOF CABLE WITH A STRAIGHT MALE N-TYPE CONNECTOR. DO NOT TERMINATE THE RF CABLE AT THE MNS MOUNTING AREA AND CLEARLY LABEL THE RF CABLE "FOR MNS". TEST RF CABLE FOR PROPER CONNECTIVITY. PROVIDE ONE 90DBI OMNI-DIRECTIONAL ANTENNA. COOPER ANT-109-OM OR, MOBILE MARK OD9-2400 OR EQUAL, ON TOP OF ROOFTOP ANTENNA MASS. DIRECTIONAL ANTENNA MAY BE MOUNTED ON FACILITY BELOW ROOFLINE IF PLACEMENT OF ANTENNA LOCATION IS PRE-APPROVED BY SPAWAR OR PHYSICAL SECURITY PERSONNEL.
- 8 PROVIDE A NON-METALLIC 18" HEIGHT X 16" WIDTH X 10" DEPTH NEMA 4X ENCLOSURE WITH RAISED COVER AND PAD LOCKABLE LATCHES W/INTERIOR MOUNTING PLATE. MOUNT THE PANEL IN THE CENTER OF THE MNS MOUNTING BOARD. PROVIDE 3/4" RMC WITH 3 CONDUCTORS, 12 AWG ELECTRICAL WIRE FROM THE ENCLOSURE TO A DEDICATED 120VAC/15A ELECTRICAL CIRCUIT. PROVIDE A DEDICATED LOCKABLE BREAKER FROM THE SAME POWER PANEL FOR FIRE ALARM CONTROL PANEL. PROVIDE AC POWER SURGE SUPPRESSOR DEVICE INLINE WITH POWER CIRCUIT INSIDE THE LOWER RIGHT CORNER OF THE ENCLOSURE. PROVIDE A DUAL ELECTRICAL OUTLET MOUNTED INSIDE THE MNS ENCLOSURE ABOVE THE WIRE SUPPRESSOR ON THE BOTTOM RIGHT OF THE MNS ENCLOSURE WIRE SURGE SUPPRESSOR IN SERIES WITH DUAL ELECTRICAL OUTLET. WIRING MUST BE IN ACCORDANCE WITH NFPA 70.

**PRELIMINARY**  
FOR REFERENCE ONLY



100 AIRSIDE DRIVE  
MOON TOWNSHIP, PA 15108  
APPROVED

FOR COMMANDER NAVFAC  
ACTIVITY  
MARINE CORPS BASE  
CAMP LEJEUNE

SATISFACTORY TO DATE  
DES JAM | DRW ADH | CHK DJW

BRANCH MANAGER  
CHIEF ENGINEER  
FIRE PROTECTION

NAVFACILITIES ENGINEERING SYSTEMS COMMAND  
ATLANTIC DESIGN AND CONSTRUCTION  
NORFOLK, VA

JACKSONVILLE, NC

P1338F II MEF SIMULATION/TRAINING CENTER  
REPLACEMENT

FIRE ALARM - RISER DIAGRAM

DEPARTMENT OF THE NAVY  
NAVFACILITIES ENGINEERING SYSTEMS COMMAND  
ATLANTIC DESIGN AND CONSTRUCTION  
NORFOLK, VA

MCB CAMP LEJEUNE

P1338F II MEF SIMULATION/TRAINING CENTER  
REPLACEMENT

FIRE ALARM - RISER DIAGRAM

SCALE: AS NOTED

EPROJECT NO.: 1590892

CONSTR. CONTR. NO.  
N40085-20-C-0059

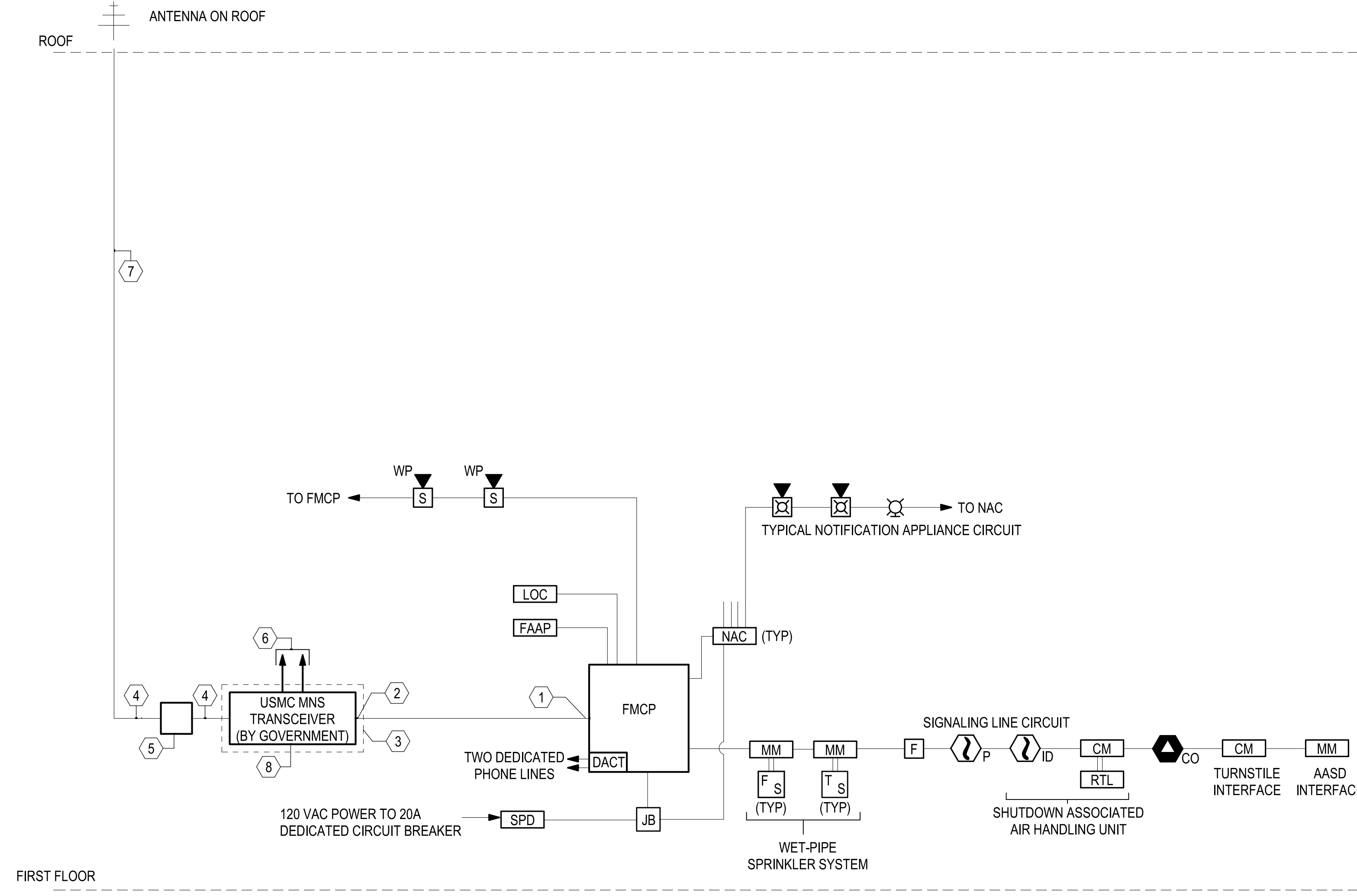
NAVFAC DRAWING NO.

SHEET OF

**FA701**

FIRE ALARM RISER DIAGRAM

SCALE:NTS



FILE NAME: BIM\_360/HF PACKAGE 3P1338.MEF\_SIM\_CTR-1590892.rvt  
PLOTTED: 9/11/2021 4:14:08 PM

DP2 SUBMISSION - P1338 BUILDING - PRE-FINAL SUBMISSION