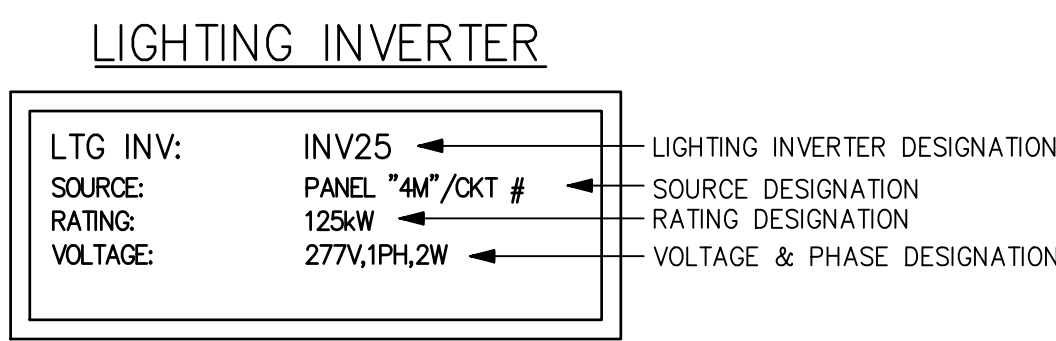
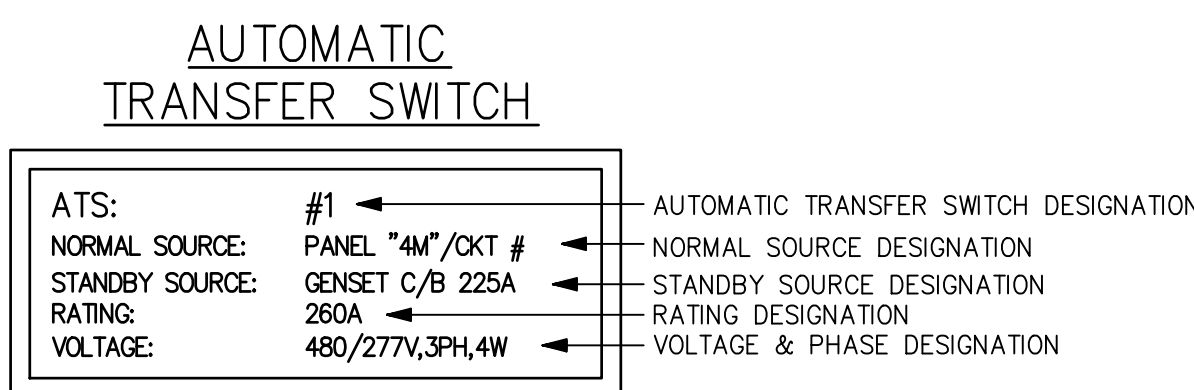
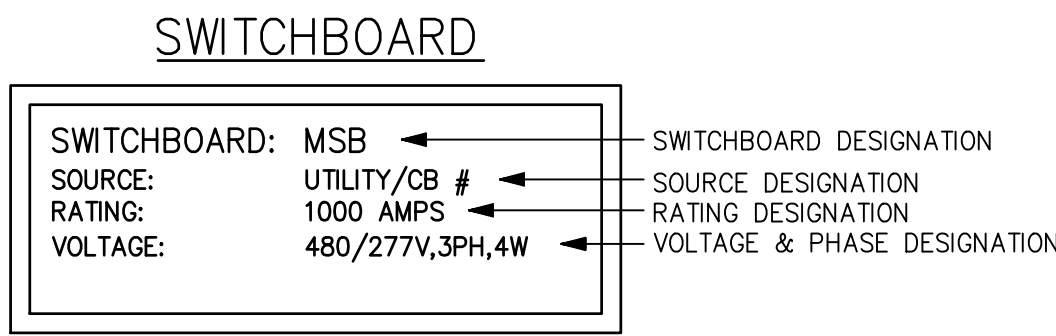
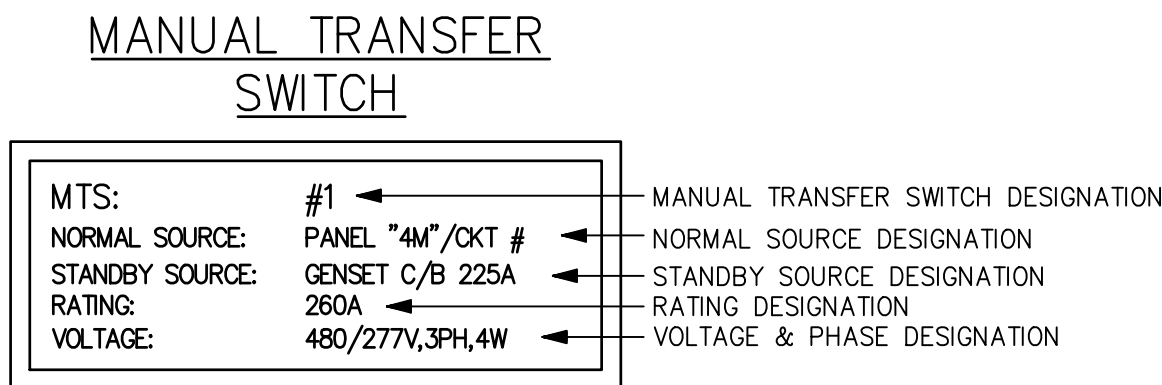
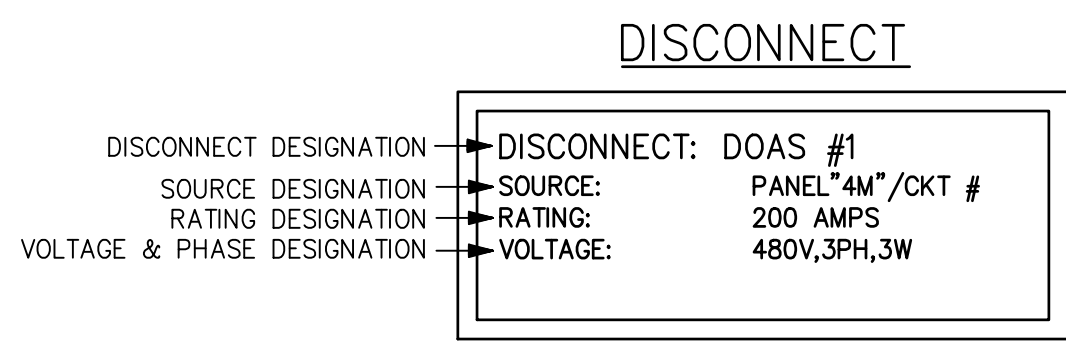
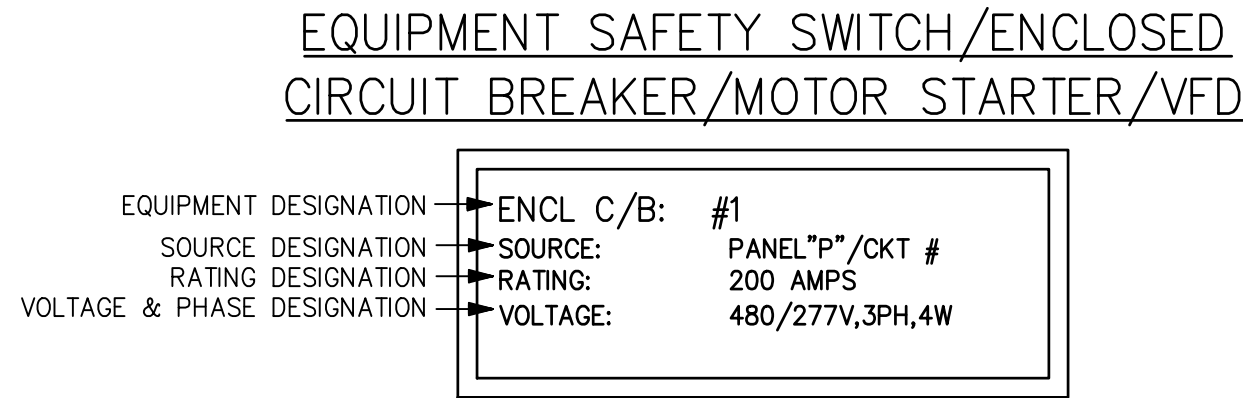
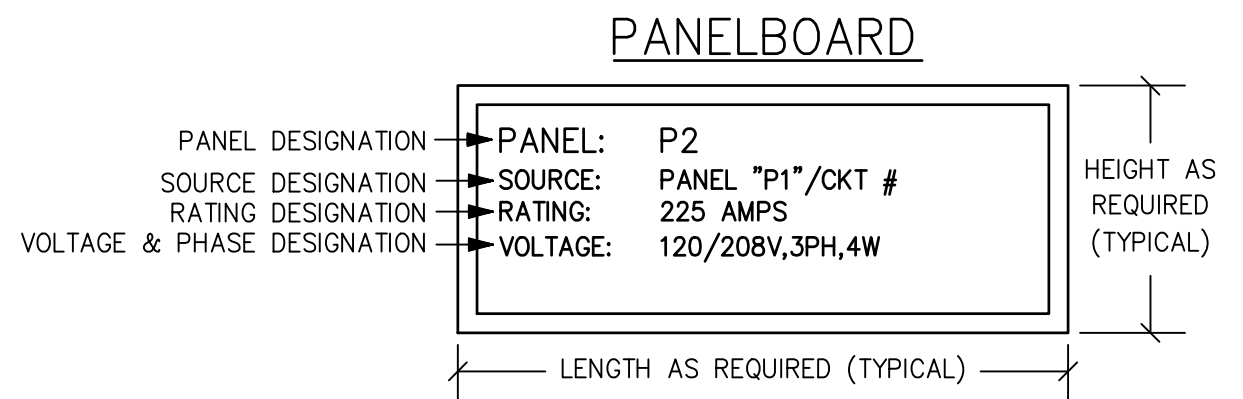
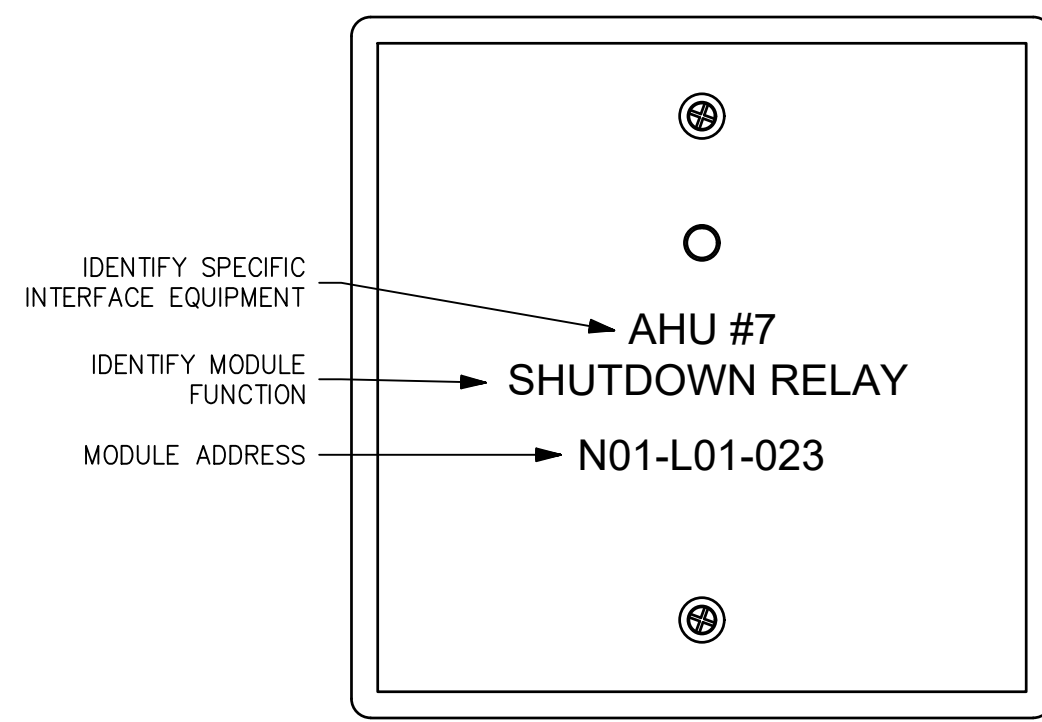


E  
D  
C  
B  
A



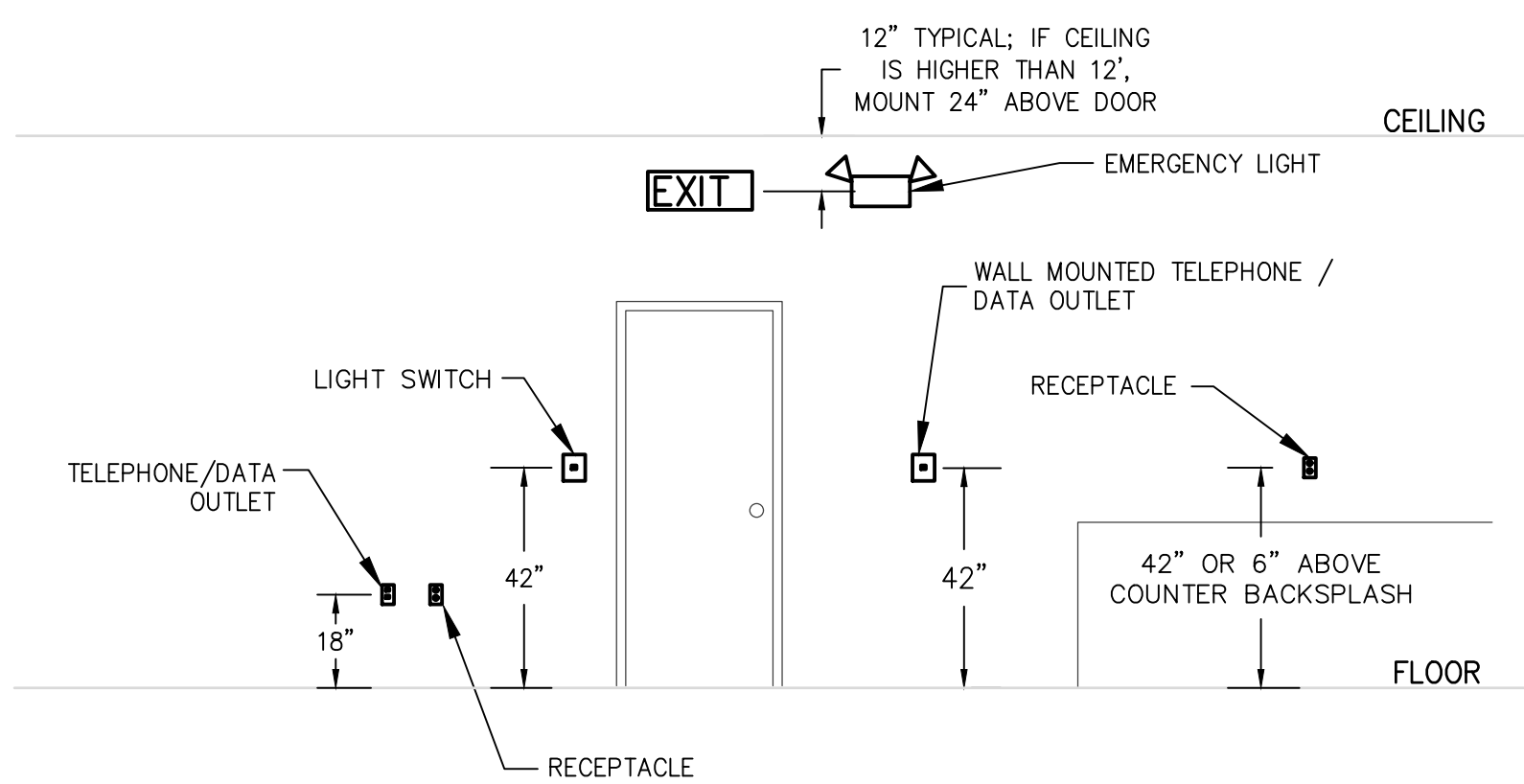
- NOTES:
1. ENGRAVED PLASTIC FOR NAMEPLATE.
  2. HIGH PERFORMANCE, DOUBLE COATED TAPE WITH ADHESIVE TO ATTACH LABELS. DESIGN BASIS: 3M #06383 OR APPROVED EQUIVALENT.
  3. 3/8" ENGRAVED LETTERS EQUIPMENT NAME DESIGNATION AND 1/4" ENGRAVED LETTERS ON ALL OTHER DESIGNATIONS.

**A** TYPICAL NAMEPLATE DETAILS  
NO SCALE

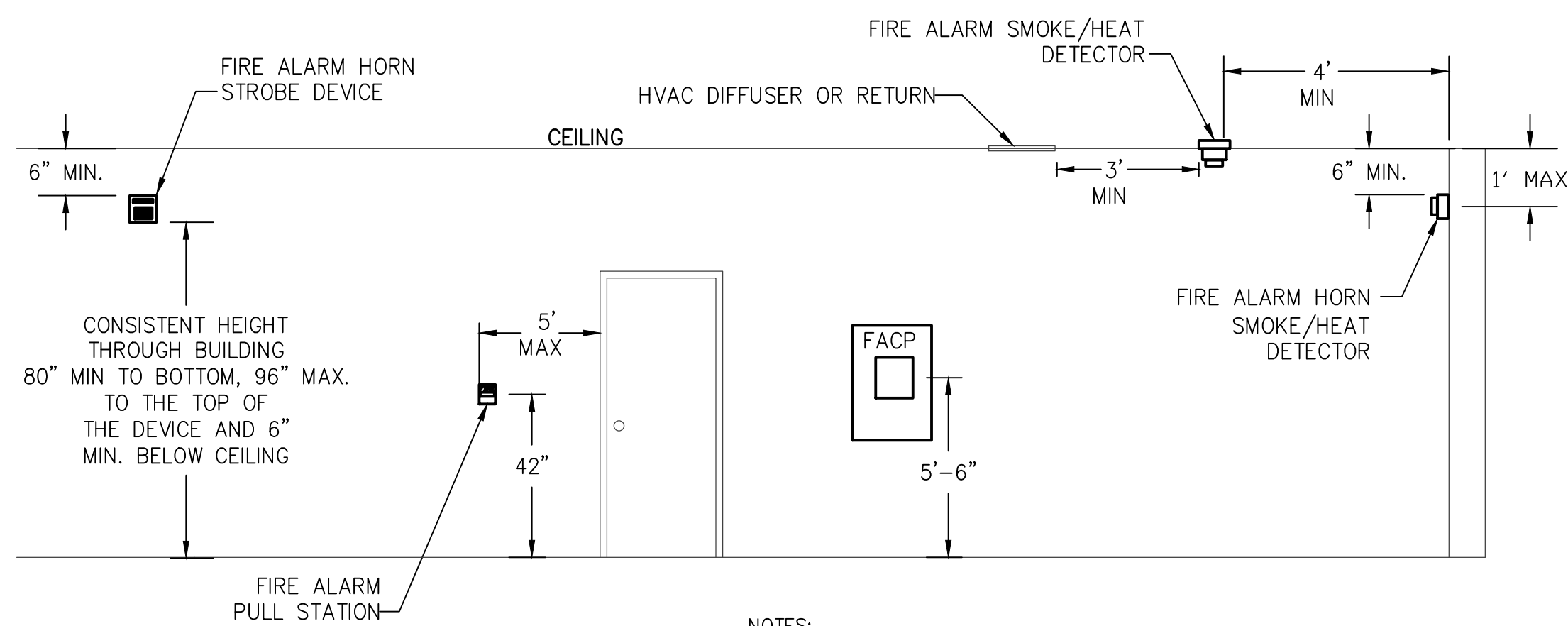


- NOTES:
1. NODE DESIGNATION MAY BE OMITTED FOR SINGLE NODE APPLICATIONS
  2. NAMING CONVENTION SHALL EMULATE FACP DISPLAY
  3. 3/8" HIGH BLACK ON CLEAR, BOLD FONT, P-TOUCH TYPE LABELS
  4. LABELS SHALL BE APPLIED STRAIGHT & LEVEL TO DEVICE ORIENTATION
  5. EXCESS LABEL MATERIAL SHALL BE TRIMMED

**D** CONTROL/RELAY MODULE LABELING DETAIL  
NO SCALE

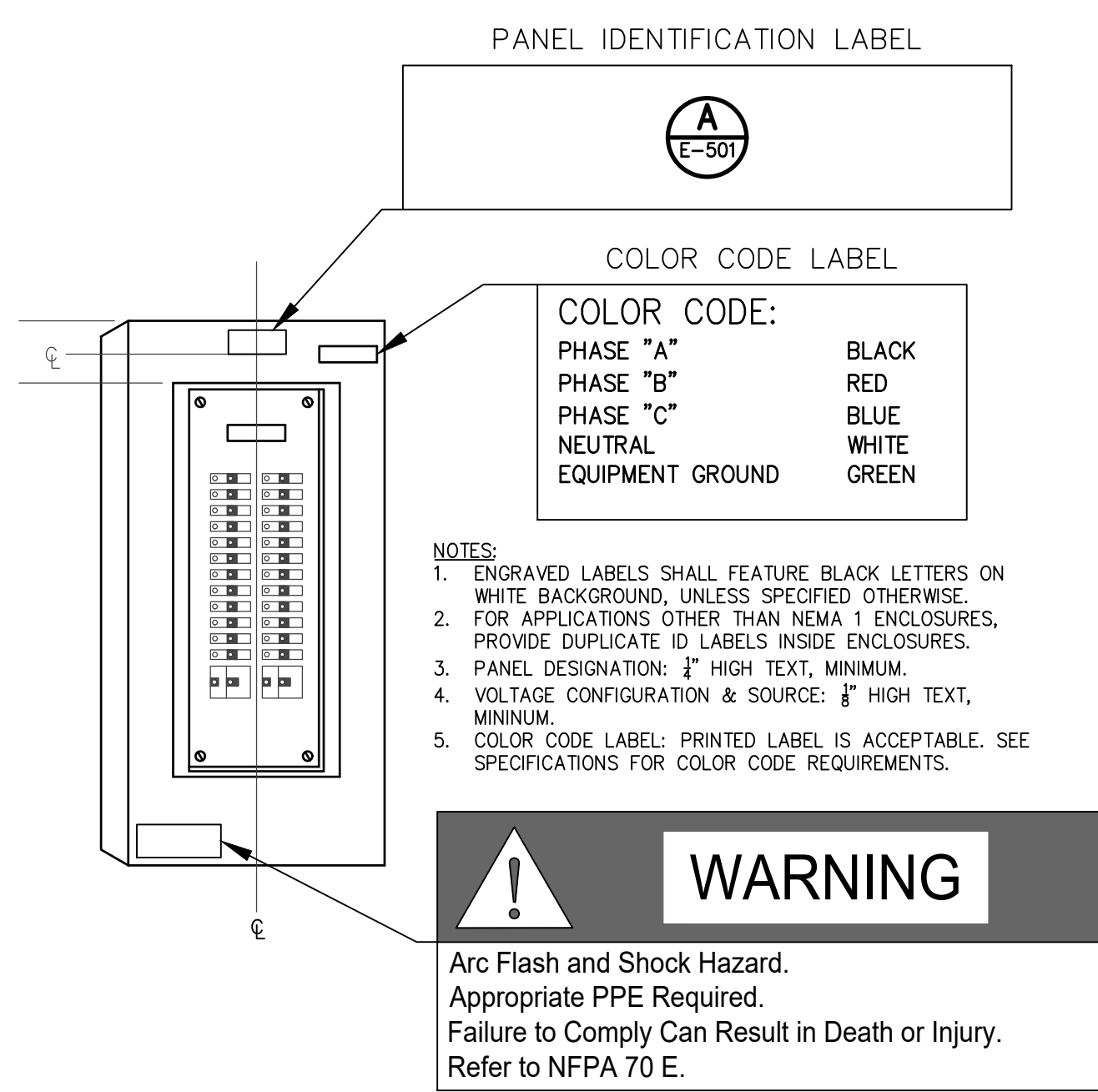


**C** MOUNTING HEIGHTS OF DEVICES  
NO SCALE

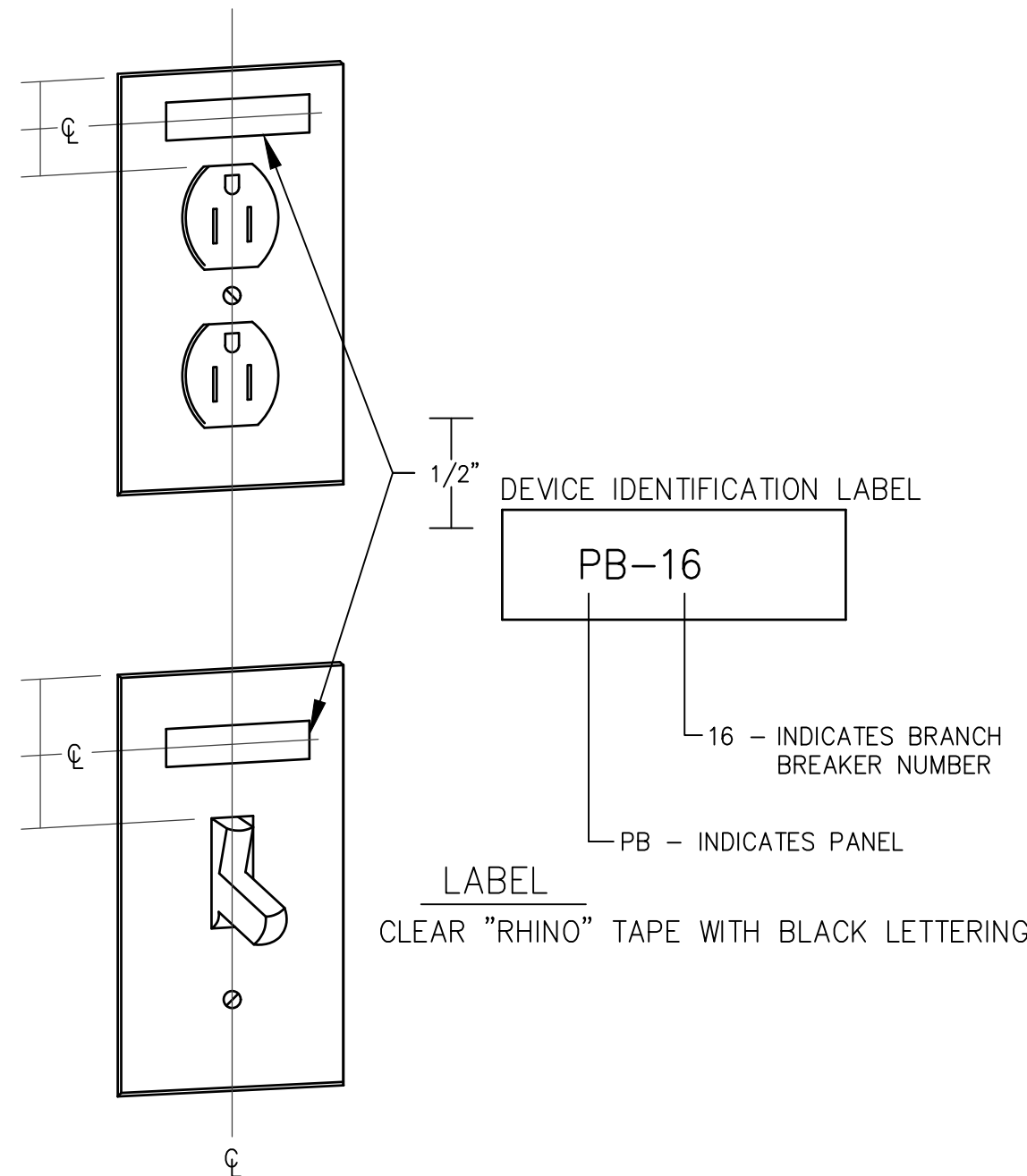


- NOTES:
1. PROVIDE FLEXIBLE CONDUIT CONNECTION TO DEVICES THAT PROVIDES SUFFICIENT SLACK TO MOVE DEVICES UP TO 4" HORIZONTALLY IN ANY DIRECTION FROM WHERE DEVICES ARE INDICATED ON THE PLANS.
  2. MOUNT DEVICES IN APPROVED BOXES.

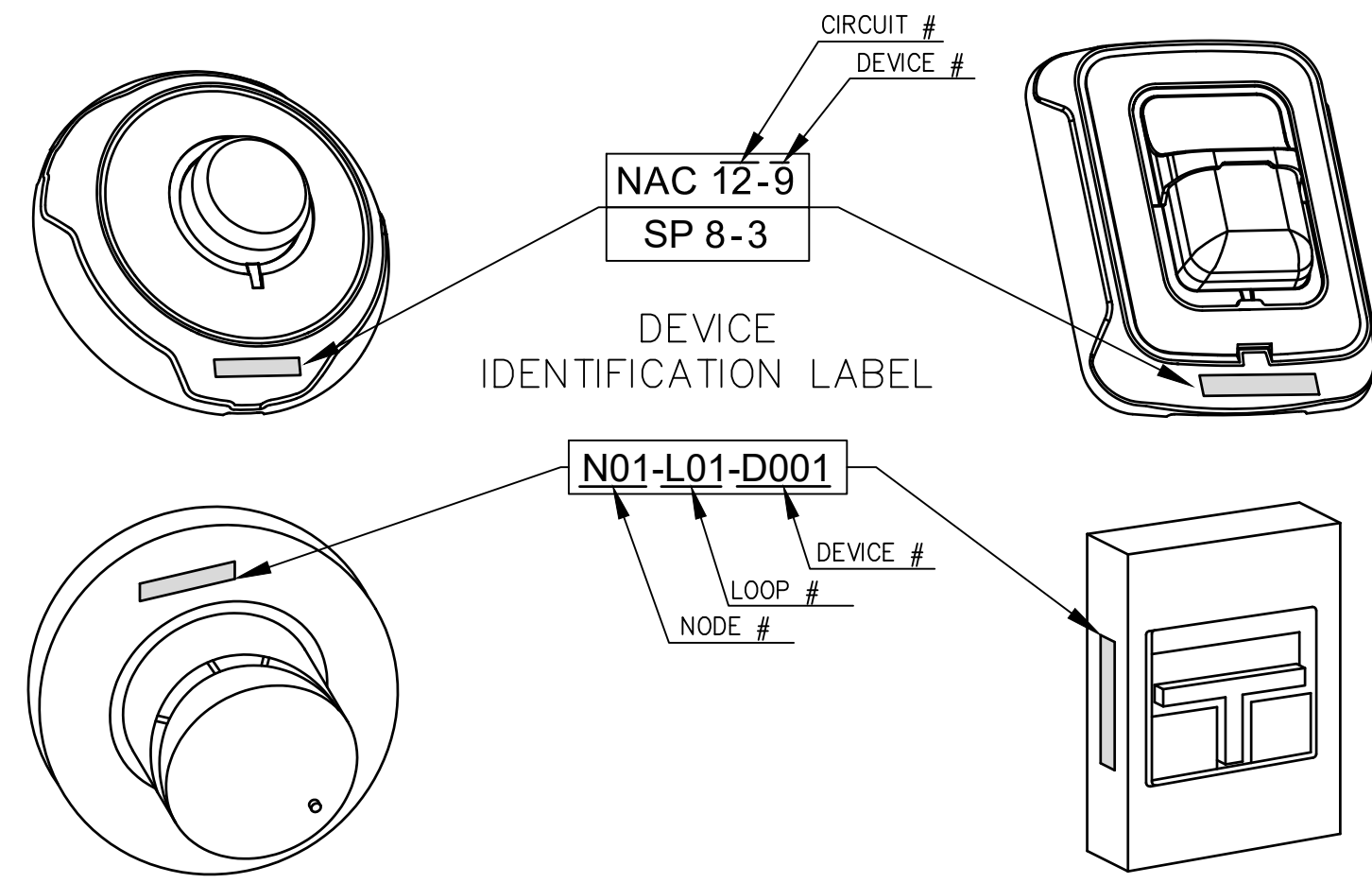
**H** MOUNTING HEIGHTS OF DEVICES DETAIL – FIRE ALARM  
NO SCALE



**B** TYPICAL PANELBOARD IDENTIFICATION  
NO SCALE

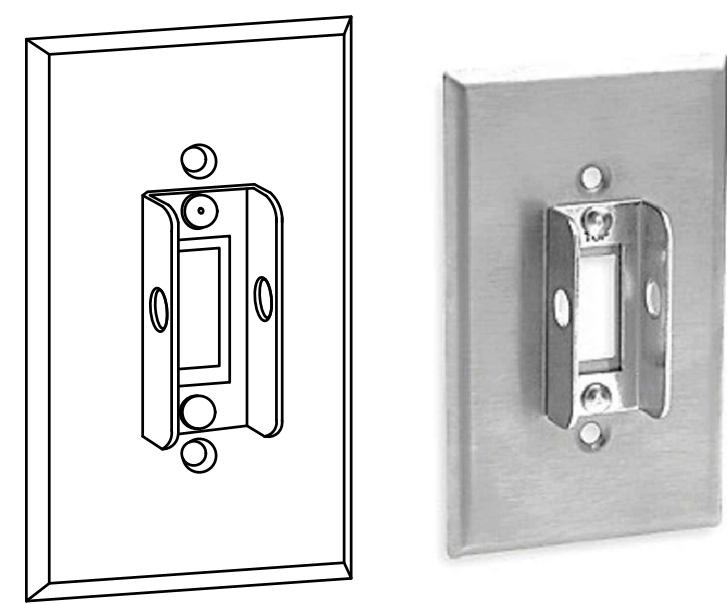


**E** WIRING DEVICE IDENTIFICATION LABEL  
NO SCALE



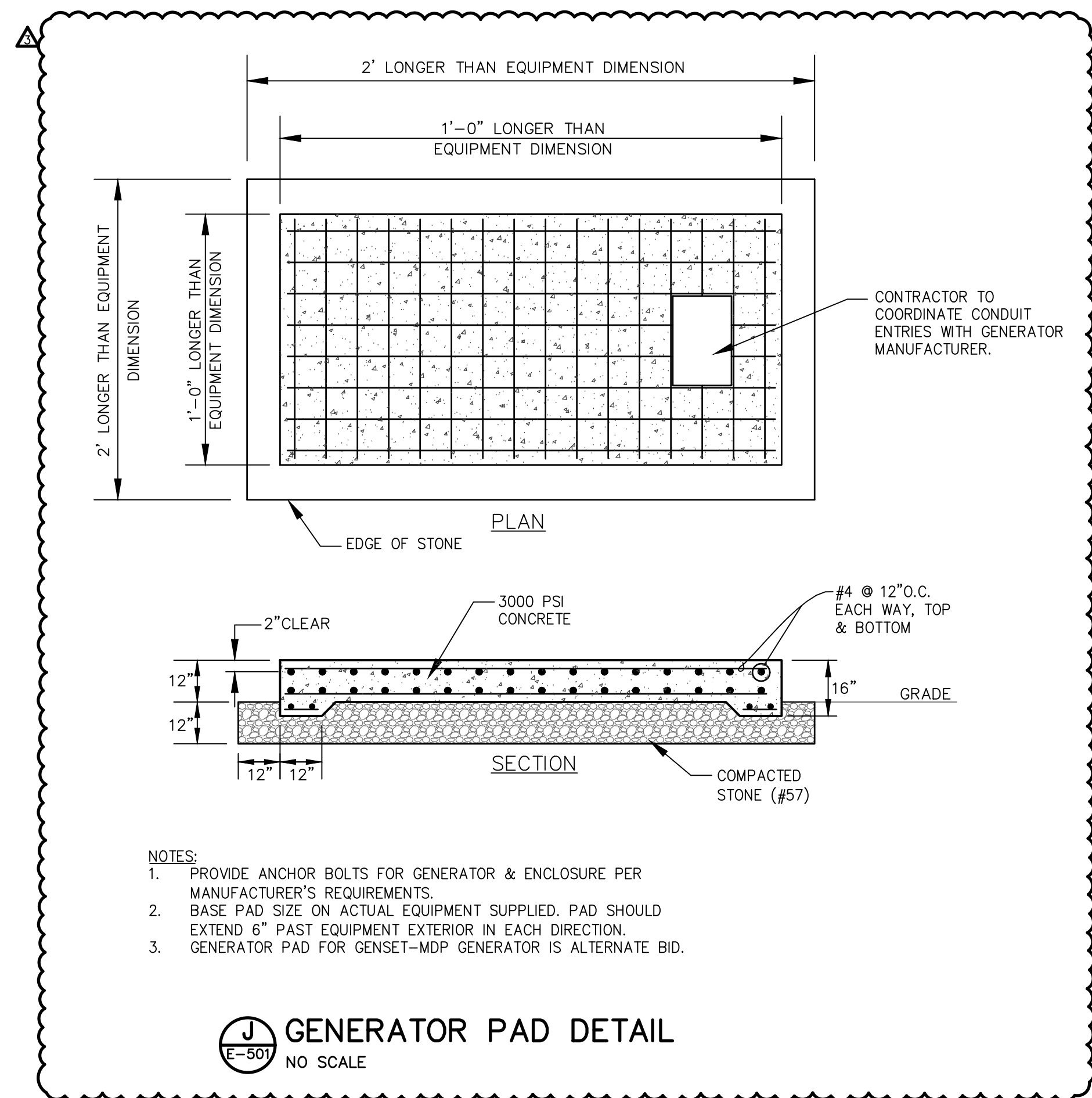
- NOTES:
1. NODE DESIGNATION MAY BE OMITTED FOR SINGLE NODE APPLICATIONS.
  2. ADDRESSABLE DEVICE ADDRESS NAMING CONVENTION SHALL EMULATE FACP DISPLAY.
  3. NOTIFICATION DEVICE LABEL SHALL MATCH AS-BUILT DRAWING CIRCUITRY LABELS.
  4. LABEL TEXT SHALL BE A SIZE WHERE EASILY READ FROM FLOOR LEVEL (3/8" MIN)
  5. BLACK ON CLEAR, BOLD FONT, P-TOUCH TYPE LABELS
  6. LABELS SHALL BE APPLIED STRAIGHT & LEVEL TO DEVICE ORIENTATION.
  7. EXCESS LABEL MATERIAL SHALL BE TRIMMED.
  8. MOUNT LABEL ON FLAT DEVICE BASE SURFACE

**C** TYPICAL FIRE ALARM DEVICE IDENTIFICATION  
NO SCALE



TYPICALLY USED FOR 120V EQUIPMENT DISCONNECTS INCLUDING, WATER HEATERS, CIRCULATION PUMPS, DAHU'S, ETC.

**F** LOCKABLE TOGGLE SWITCH COVER  
NO SCALE



**J** GENERATOR PAD DETAIL  
NO SCALE

PENDER COUNTY  
COURTHOUSE

PENDER COUNTY



**LS3P**

101 NORTH THIRD STREET SUITE 500  
WILMINGTON, NORTH CAROLINA 28401  
TEL. 910.790.9901 FAX 910.790.3111  
WWW.LS3P.COM

**CHEATHAM & ASSOCIATES, P.A.**  
CONSULTING ENGINEERS  
3412 ENTERPRISE DRIVE  
WILMINGTON, NORTH CAROLINA 28405  
(910) 452-4210  
FAX: (910) 452-4211  
OFFICE@CHEATHAMPA.COM  
NC LICENSE# C-1073

JOB # 19060



No.	Description	Date
Δ	Addendum No. 3	04-14-2020

PROJECT: 7702-185550  
DATE: 3/29/20  
DRAWN BY: XXXXX  
CHECKED BY: M. CIARROCCA

**ELECTRICAL-  
DETAILS**

**E-501**