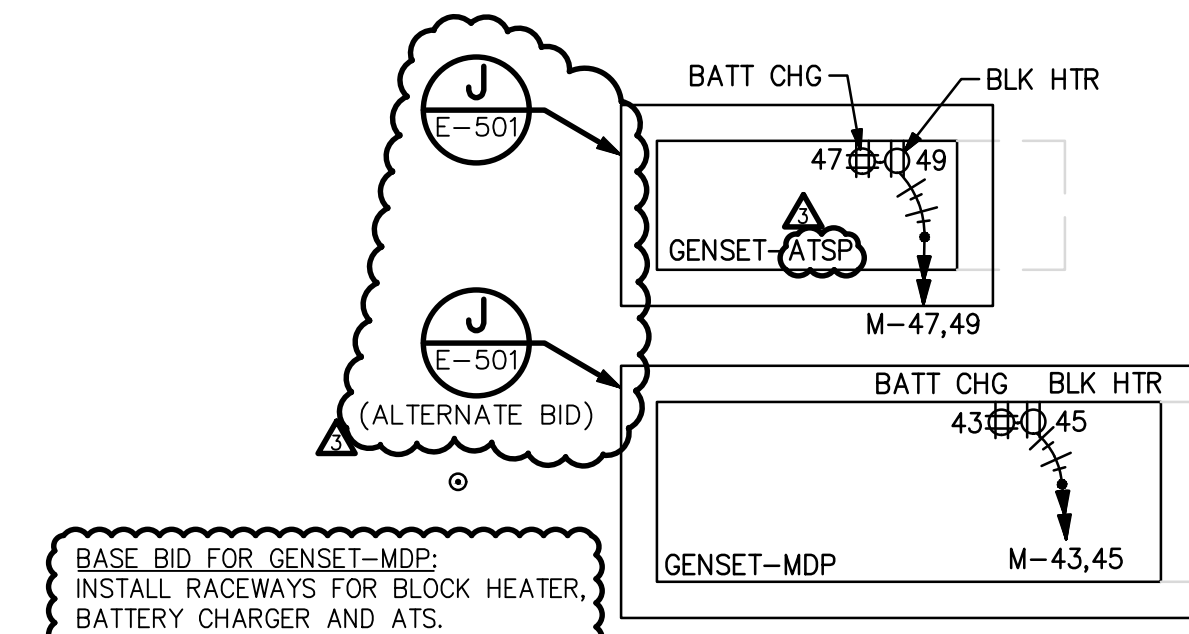
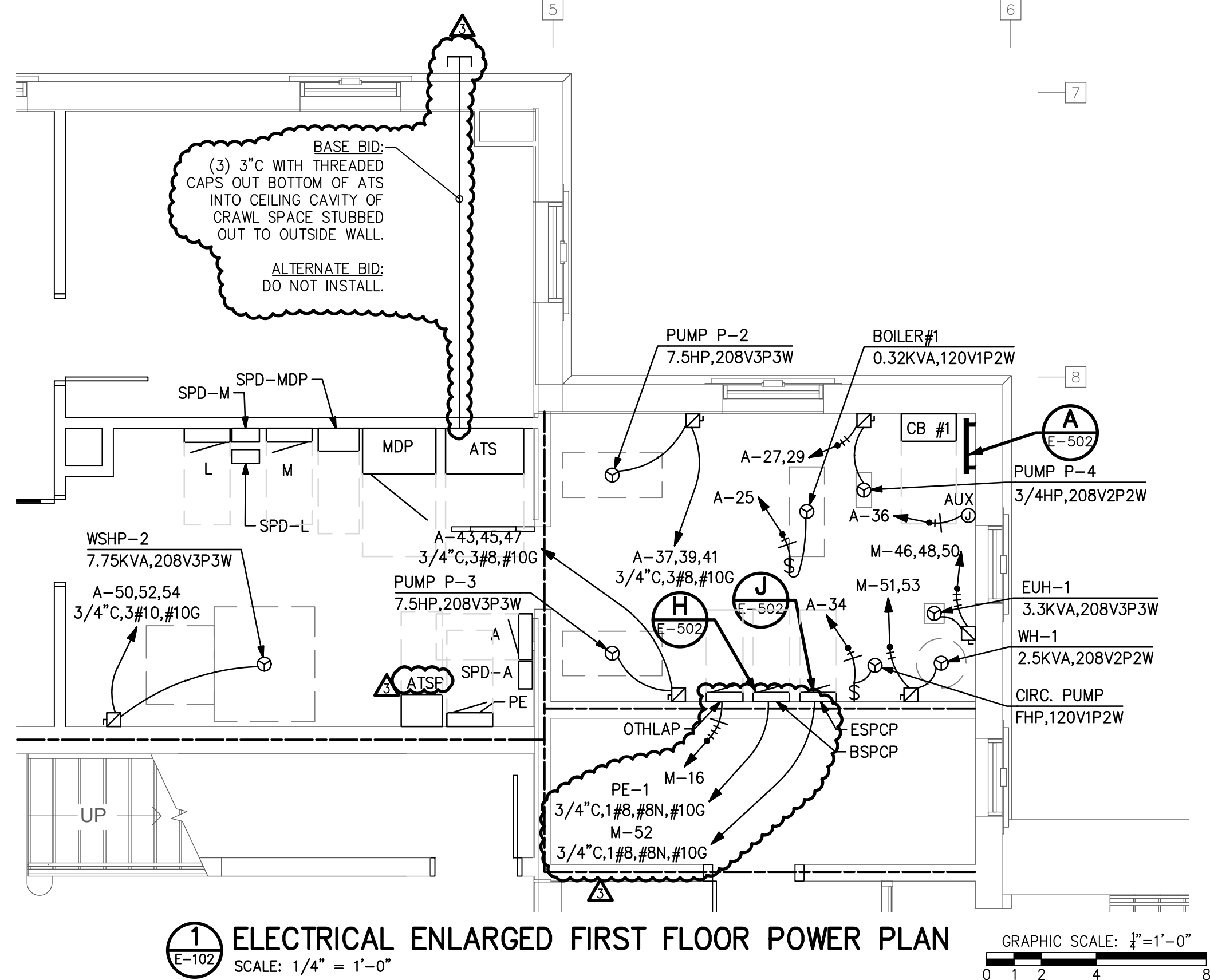


HAZARDOUS MATERIALS

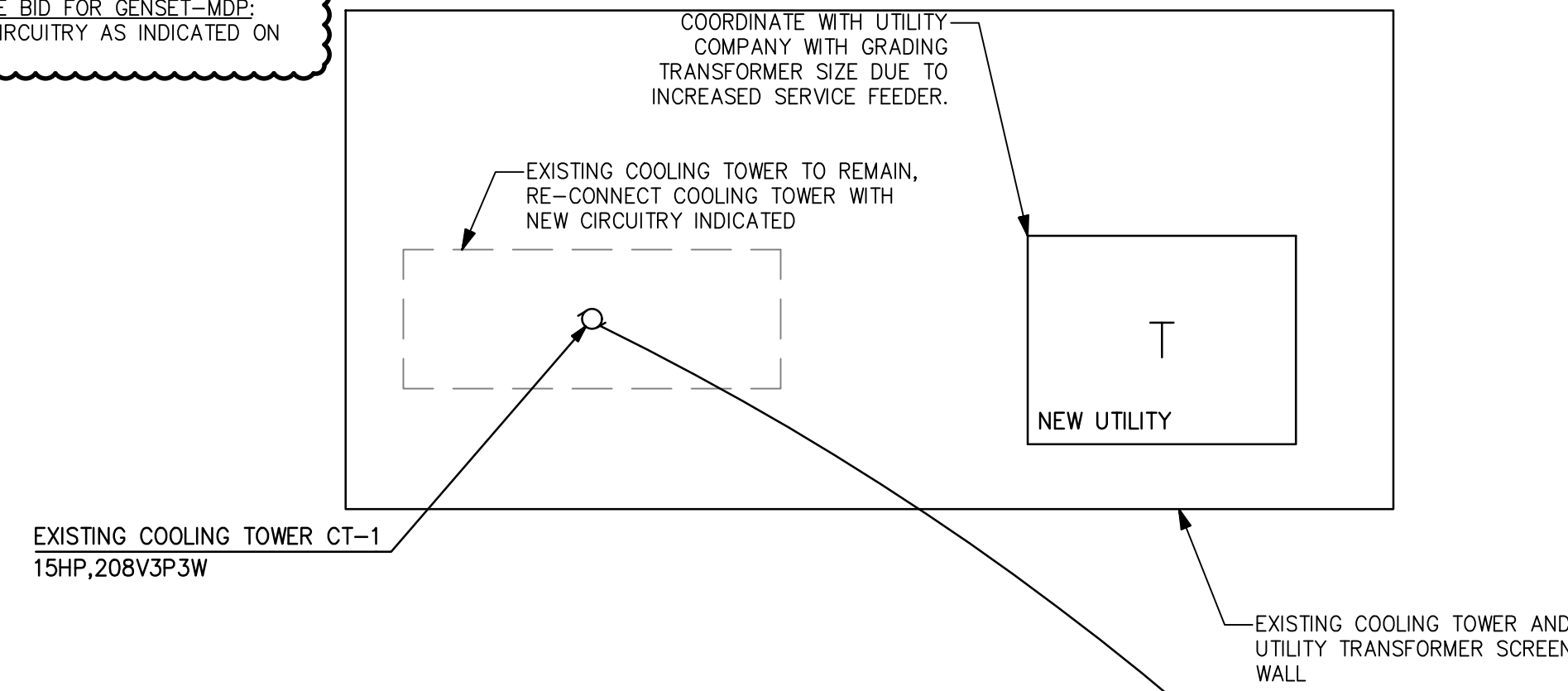
THE BUILDING SURFACES MAY HAVE LEAD PAINT. ALL CONTRACTORS ARE REQUIRED TO COMPLY WITH OSHA REGULATIONS 29 CFR 1926.62 BY DEVELOPING A COMPLIANCE PLAN. THE PROJECT DOES NOT INCLUDE ABATEMENT OF ALL LEAD BASED TO LEAD CONTAINING PAINT IN THE BUILDING. WHERE NECESSARY, CONTRACTORS CAN USE GENERAL CONTRACTOR'S ENVIRONMENTAL CONTRACTOR TO REMEDIATE A SPOT OR LOCATION WHERE LEAD PAINT INTERFERES WITH CONSTRUCTION WORK. COST OF REMEDIATION WILL BE INVOICED AGAINST THE LEAD REMOVAL ALLOWANCE.

ALL ASBESTOS IS IDENTIFIED AND WILL BE ABATED AS PART OF THE PROJECT. ANY SUSPECTED AREAS MUST BE REPORTED TO THE ARCHITECT AND FURTHER INVESTIGATION WILL BE DONE BY THE ABATEMENT DESIGNER.

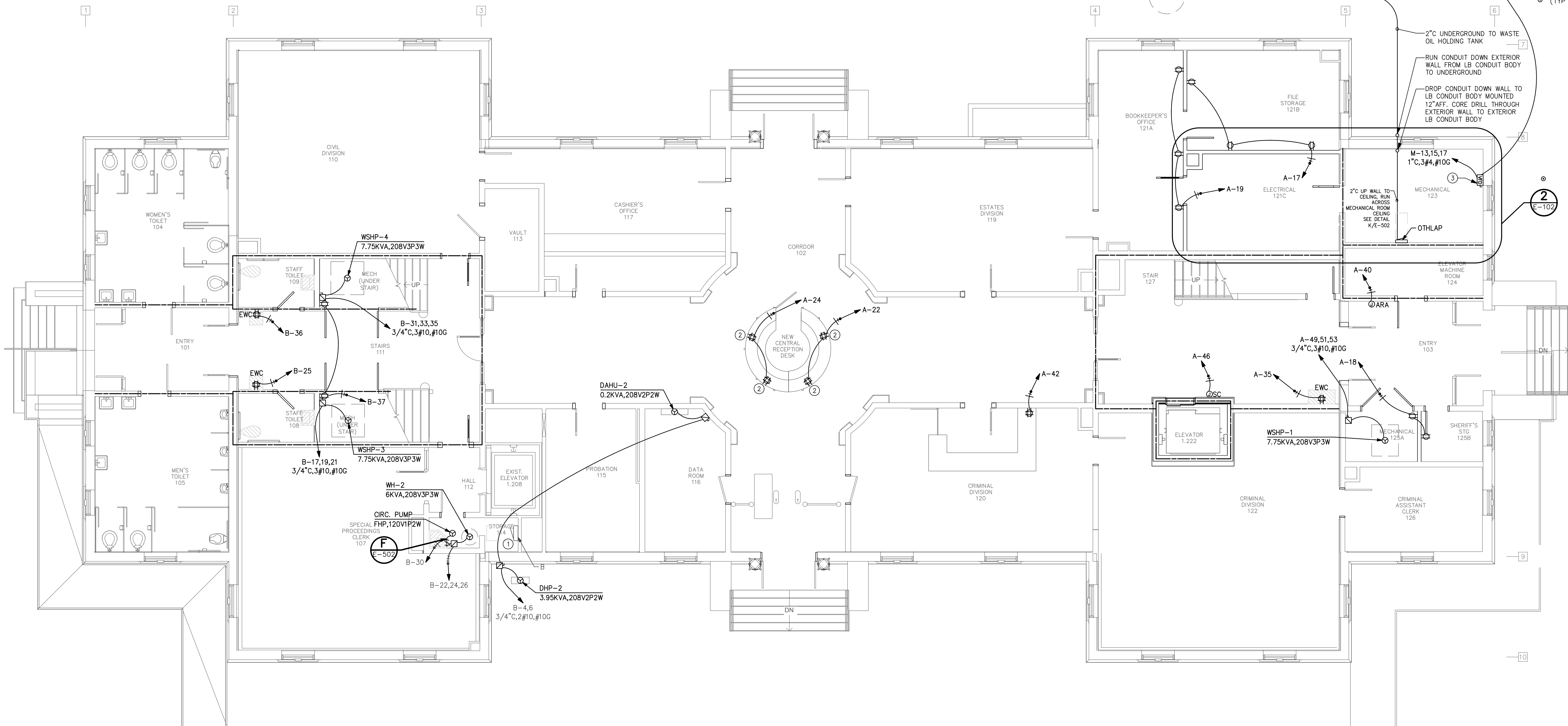


KEYED NOTES:

- EXISTING PANEL "B": SQUARE D TYPE NQ00, 120/208V 3P4W. MOVE EXISTING 1P/20AMP BREAKER AND EXISTING CIRCUIT 19 TO SPACE 15. MOVE EXISTING 1P/20AMP BREAKER AND EXISTING CIRCUIT 24 TO SPACE 20. PROVIDE THE FOLLOWING BREAKERS:
 - (1) 3P/30AMP BREAKER IN SPACES 17, 19, 21 FOR NEW HVAC UNIT WSP-3.
 - (1) 1P/20AMP SPARE BREAKER IN SPACE 23, LABEL AS SPARE.
 - (1) 3P/30AMP BREAKER IN SPACES 31, 33, 35 FOR NEW HVAC UNIT WSP-4.
 - (1) 1P/20AMP GFI BREAKER IN SPACE 29 FOR NEW EWC. REUSE EXISTING CIRCUITRY WHERE AVAILABLE FROM DEMOED EWC.
 - (1) 1P/20AMP BREAKER IN SPACE 37 FOR NEW RECEPTACLES.
 - (1) 3P/30AMP BREAKER IN SPACES 22, 24, 26 FOR WH-2.
 - (1) 2P/25AMP BREAKER IN SPACES 4, 6 FOR DHP-2.
- COORDINATE MOUNTING WITH ARCHITECT. DEVICE SHALL BE FED FROM CRAWL SPACE. ALTERNATE BID.
- LOCATION OF RE-LOCATED VFD FOR COOLING TOWER CT-1.



FIELD VERIFY CONDITION AND SIZE OF EXISTING UNDERGROUND CONDUIT FROM EXISTING BASEMENT BOILER ROOM TO COOLING TOWER. RE USE CONDUIT IF SUFFICIENT FOR NEW CONDUCTORS. INSTALL 3#4, #10G



PENDER COUNTY COURTHOUSE

PENDER COUNTY



LS3P

101 NORTH THIRD STREET SUITE 500
WILMINGTON, NORTH CAROLINA 28401
TEL. 910.790.9901 FAX 910.790.3111
WWW.LS3P.COM

CHEATHAM & ASSOCIATES, P.A.
CONSULTING ENGINEERS
3412 ENTERPRISE DRIVE
WILMINGTON, NORTH CAROLINA 28405
(910) 452-4210
OFFICE@CHEATHAMPA.COM
NC LICENSE# C-1073

JOB # 19060



No.	Description	Date
1	Addendum No. 3	04-14-2020

PROJECT: 7702-185550
DATE: 3/29/20
DRAWN BY: KAF/MP5/FMD/DB
CHECKED BY: M. CIARRROCCA

ELECTRICAL-
FIRST FLOOR
POWER PLAN

E-102