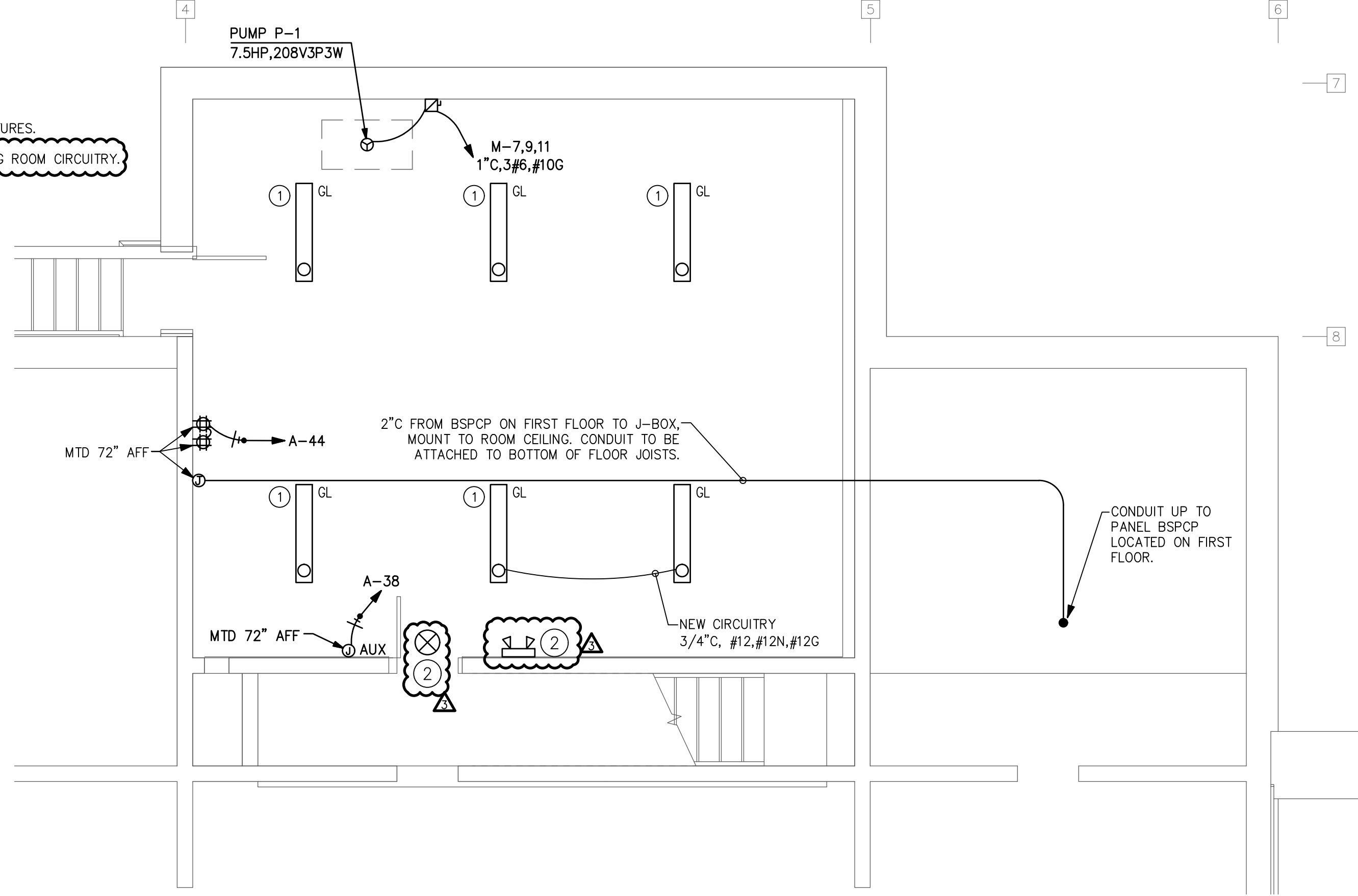


HAZARDOUS MATERIALS

THE BUILDING SURFACES MAY HAVE LEAD PAINT. ALL CONTRACTORS ARE REQUIRED TO COMPLY WITH OSHA REGULATIONS 29 CFR 1926.62 BY DEVELOPING A COMPLIANCE PLAN. THE PROJECT DOES NOT INCLUDE ABATEMENT OF ALL LEAD BASED TO LEAD CONTAINING PAINT IN THE BUILDING. WHERE NECESSARY, CONTRACTORS CAN USE GENERAL CONTRACTOR'S ENVIRONMENTAL CONTRACTOR TO REMEDIATE A SPOT OR LOCATION WHERE LEAD PAINT INTERFERES WITH CONSTRUCTION WORK. COST OF REMEDIATION WILL BE INVOICED AGAINST THE LEAD REMOVAL ALLOWANCE.

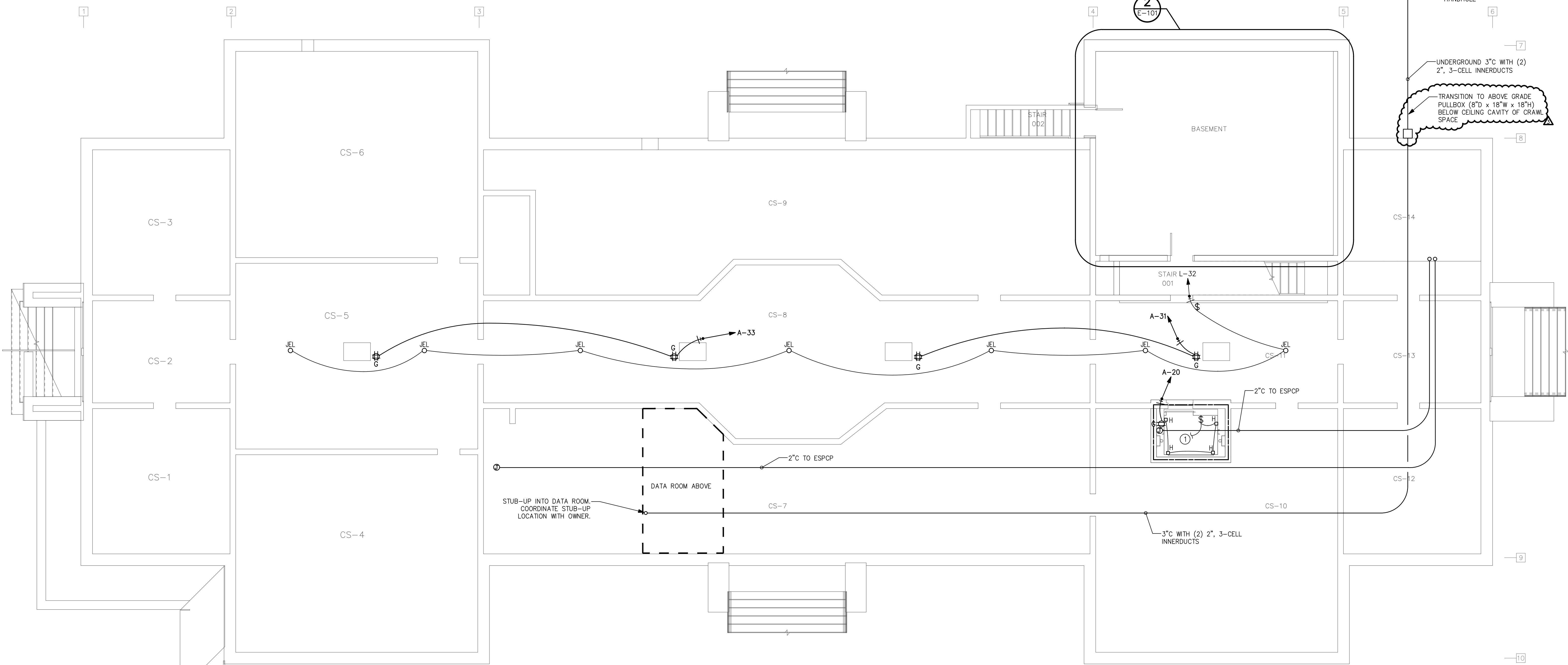
ALL ASBESTOS IS IDENTIFIED AND WILL BE ABATED AS PART OF THE PROJECT. ANY SUSPECTED AREAS MUST BE REPORTED TO THE ARCHITECT AND FURTHER INVESTIGATION WILL BE DONE BY THE ABATEMENT DESIGNER.

- KEYED NOTES:
- 1 REUSE EXISTING CIRCUITRY FROM DEMOED LIGHT FIXTURES.
 - 2 CONNECT FIXTURE TO UN-SWITCHED LEG OF EXISTING ROOM CIRCUITRY.



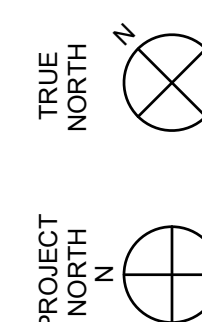
2 ELECTRICAL CRAWL ENLARGED ELECTRIC PLAN
SCALE: 1/4" = 1'-0"

GRAPHIC SCALE: 1/4" = 1'-0"
0 1 2 4 8



1 ELECTRICAL CRAWL SPACE ELECTRIC PLAN
SCALE: 3/16" = 1'-0"

GRAPHIC SCALE: 3/16" = 1'-0"
0 2 4 8



PENDER COUNTY COURTHOUSE

PENDER COUNTY



LS3P

101 NORTH THIRD STREET SUITE 500
WILMINGTON, NORTH CAROLINA 28401
TEL. 910.790.9901 FAX 910.790.3111
WWW.LS3P.COM

CHEATHAM & ASSOCIATES, P.A.
CONSULTING ENGINEERS
3412 ENTERPRISE DRIVE
WILMINGTON, NORTH CAROLINA 28405
(910) 452-4210
FAX: (910) 452-4211
OFFICE@CHEATHAMPA.COM
NC LICENSE# C-1073

JOB # 19060



No.	Description	Date
1	Addendum No. 3	04-14-2020

PROJECT: 7702-185550
DATE: 3/29/20
DRAWN BY: KAF/MP/IFM/DCB
CHECKED BY: M. CIARROCCA

**ELECTRICAL-
CRAWL SPACE
ELECTRIC
PLANS**

E-101

BID DOCUMENTS