



## **ADDENDUM NO. FOUR**

23 MARCH 2020

**PROJECT TITLE: JACKSONVILLE STATION**  
**1300 NORTH MARINE BOULEVARD/HWY 17 NORTH**  
**JACKSONVILLE, NORTH CAROLINA**  
**JACKSONVILLE PROJECT NO. BP19-00002283**  
**HRA COMMISSION #189518.00**

### **ADDENDUM:**

I. Contents of this addendum are to be part of the overall Bid Documents

II. Project Bid Date: **3 PM THURSDAY, 9 APRIL 2020**

A. The last day to submit a RFI is Monday, 30<sup>th</sup> of March which would allow a final addendum if needed to be issued no later than Wednesday, 1<sup>st</sup> of April. As of this date there are no plans to change the bid date due to the current issues and governmental restrictions

III. General Requirements / Addenda.

A. Previously issued Addenda No. One, Two and Three are to be incorporated into the overall scope with the exception of the previously issued Transportation/Administration Wing Staff Meeting Room #106 and IT/Comm Room #114 revision previously noted in Addendum No. Two that have been incorporated into the current bid documents.

IV. Prospective Bidder Questions.

1. Would the City reconsider extending the construction length?

Response:

Yes, the length of construction is hereby changed from 12-months to 15-months. The response to this same question in Addendum #1 is considered null and void. Article 12 of the General Conditions provide provisions that allow for the extension of the construction length if warranted.

2. Item number 6.0 of the Bidder Qualifications Statement requires the GC to provide names and the percentage of work of the subcontractors on the project. During the bidding process the subcontractors change numerous times. They also change within minutes of the bid time, making it very difficult to complete this task. Could you please provide some guidance of what the minimum number of subcontractors you will accept?

Response:

We realize that this question is difficult to answer especially on the bid due date. The intent is to determine how much work the Prime Contractor intends to self-perform and to identify what trades will be subcontracted out. The subcontractors identified in this question should match the requirements of the DBE forms (Attachment E, F and G) that are required to be submitted with the bid. The City will work with the Prime Contractor regarding any subcontractor substitutions that may be needed.

3. The note on Drawing C1.5 says the Muffin Monster Manhole will be Manhole #1. However, all other references to the Muffin Monster Manhole identifies that manhole to be Manhole #4  
Can you confirm the Muffin Monster Manhole will be Manhole #4?

Response:

Note #24 on sheet C1.5 states the Muffin Monster Manhole is to be installed for Manhole #1, however the plan view shows it labeled as Manhole #4 by the dumpsters. The plan view label with the Muffin Monster Manhole by the dumpsters for Manhole #4 is correct.

Note sheet #C1.8 has also been revised to show the electrical panel for the Monster Muffin Manhole near Manhole #4 by the dumpsters.

4. Specification 10431 SIGNS section 2.2 details ASI Sign Systems as a single source manufacturer for Interior ADA signage.  
Drawing I.5 provides a signage plan, and A9.1 & A9.2 provides a basic signage schedule.  
No signage drawings, sizes, layout, construction notes, etc. are provided for bidding purposes.  
Please provide signage drawings of all required sign types, as well as a detailed signage schedule to correlate, including alternate acceptable manufacturers.

Response:

Reference drawing # I.5 Room Signage Plan. The specification and manufacturer noted are for Design purpose; an alternative manufacturer meeting the same level of product will be acceptable based on final review and determination by the Architect.

5. Drawing I.1 & A12.3 details "TICKET", "VENDING", "MEN / WOMEN", and "INBOUND / OUTBOUND" verbiage on the interior elevations.  
Please provide clarification as to whether this lettering is to be part of the millwork trade, or dimensional characters applied to the face of the millwork.

Response:

Per the drawings the signage is PART of the overall wood trim scope.

6. Drawing A4.1, 1 / A5.1, and 2 / A7.2 details Cast Stone w/ "JACKSONVILLE 1300" verbiage on the exterior elevations.  
Please provide clarification as to whether this lettering is to be recessed into the cast stone, or dimensional characters applied to the face of the cast stone.

Response:

The Lettering is part of the cast stone.

7. Details 2 / A8.1 details "Laminated Lettering" 6" H on glass stating "TRANSIT CENTER" (2 Sets), "ADMINISTRATION", and "MEETING" (2 Sets - Not Drawn – See 4 / A4.1).  
Please verify the material for "laminated lettering" and confirm if standard vinyl is acceptable.

Response:

The lettering is to be premium grade exterior vinyl lettering.

8. Drawing CA.3 details a Main Entry Monument Sign and a Monument Directional Sign with a damaged file view not showing clear text on signs.  
Notes on Detail 1 / Elevation & Section A state "Furnished / Installed By Owner".  
Notes on Detail 2 / Elevation state "Furnished / Installed by Owner", but Detail 2 / Section A states "Sign / Letters And Anchorage By Signage Contractor"  
Please clarify if this signage is all by owner, or all by the signage subcontractor.  
If it is to be included in the scope of the project, please provide clarification on the copy and sizes of the lettering for bidding purposes

Response:

The raised metal lettering is to be furnished/installed by the Contractor.

The size of the lettering is to be:

Main Entry Monument Sign:

"Jacksonville Station" - 8 inches

"1300 N. Marine Blvd." – 6 inches

Monument Directional Sign:

All lettering is to be 3-1/2"

9. Drawings E 3.1 and E 3.2 show a strip fixture symbol type D but it is labeled type K. Type K is the pendant at the bus canopies.  
Please confirm that type K on E 3.1 and E 3.2 are to be fixture type D or advise if this is a different fixture.

Response:

Fixtures show on roof plan are noted to be in the attic space to serve the walkways. They should be Type D fixtures.

10. Drawing E 2.2 B indicates power for admin portion of building this drawing shows 6 floor boxes 4 of these have a data beside them the electrical legend on drawing E 0.1 only indicates a symbol for a floor box with a duplex receptacle.  
Are these data outlets to be in the floor or are they in ceiling?  
If in the floor are, they in same floor box or separate floor box have design team provide information on floor box for data

Response:

See the attached "Floor Box Submittal.pdf" for our understanding of the two-gang floor box that was the design intent. This is a submittal from a past project, and specification equals are welcomed.

11. Drawing E 2.1 B indicates a duct detector provided and wired by EC installed by MC.  
What is duct detector supposed to connect to allow signal to be sent or is it simply going to shut down one unit and not alert the fire department.

Response:

Duct detector is only for air handling unit shutdown. Fire Alarm system is not required for this building and no dial-out capability is provided.

12. Drawing E2.3A indicates one flagpole light—architect to provide specification, Drawing C2.3A indicates three flagpole lights  
Which is correct?  
What is spec for flagpole light?

Response:

Flagpole lights to be located per civil drawings. All lights to be circuited together as indicated on sheet E2.3A.

Flagpole light is to be Kim Lighting #LTV83SS, Lumiere #Monaco 3002 Series, Hadco #SL-33LED Series.

## DRAWINGS/SPECIFICATION:

### Drawings:

#### Architectural:

1. Drawing #A11.2 RCP-Transportation-Administration Wing:
  - a. Replace drawing #A11.2 RCP-Transportation-Administration Wing drawing in the bid set package with attached #A11.2 RCP-Transportation-Administration Wing drawing.

John W. Farabow Jr. AIA NCARB  
Project Architect



# Rectangular Floor Boxes

## 1-, 2-, and 3-Gang



\*U.S. Patent 5,866,845

***Carlon® Rectangular Floor Box Systems – three-way power, data, and communications plus easy double or triple ganging, too.***

Compared to metal boxes, Carlon rectangular floor boxes cost less and install faster to save you money on every job. Three-in-one power, data, and communications capability cuts installation time and cost even more, while simple two- and three-gang modularity gives you the flexibility, installation ease, and cost-savings no other nonmetallic boxes can match. The covers attach without the use of fasteners, providing a professional, clean installation as well as preserving the aesthetic life of the product. Take a closer look at all our rectangular floor box systems offer you.

## Features

- Covers require no adjusting collar. Two screws assure a flush, secure installation.
- Nonmetallic PVC construction, watertight gasket, and corrosion-resistant hardware assure long life and reliable performance even in harsh and/or corrosive environments.
- One consistent box depth simplifies ordering time and reduces inventory.
- Saves time and money on installations with simple saw cut to floor level.
- Concrete tight and suitable for any on grade/ below grade application; concrete or wood sub-floor construction approved.
- Convenient cubic inch capacity markings on inside allow for easy inspection.
- PVC molded ports and reducer plugs included.
- Accepts 1/2", 3/4", and 1" conduit, tubing or raceway.
- Rectangular sides are drillable.
- For tile and carpet applications.
- Cover options include solid brass or thermoplastic (brown, slate, and caramel).
- UL scrub water tested.

# Rectangular Floor Boxes

## Installation

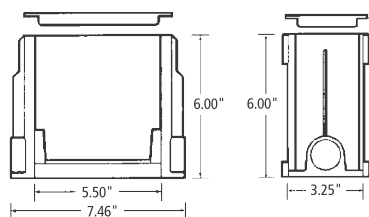


With our rectangular boxes, one SKU is all you ever need. Simply remove appropriate sides and slide boxes together to create two- or three-gang boxes for on-the-job flexibility no competitor offers.



## Specifications

### Rectangular Floor Box



Part No.	Material	Size	Internal Volume (cu. in.)	Min. Concrete Depth	Hubs	Reducer Plugs	Std. Ctn. Qty.	Std. Ctn. Wt. lbs.
E976RFB	PVC	1-Gang	97.4 (16.8 per inch of Depth)	3 1/2"	(2) 1"	(2) 1" x 3/4" (2) 3/4" x 1/2"	3	6.92

### Activation Kit



Activation kit provides components to accommodate all standard power, data, and communications devices plus a divider to separate power from data and communications – all in a single SKU. Device yokes can be adjusted to store excess cord in the box.

Part No.	Material	Std. Ctn. Qty.	Std. Ctn. Wt. (lbs.)
E976AK2	PVC	3	2.47



# Rectangular Floor Box Covers – Nonmetallic

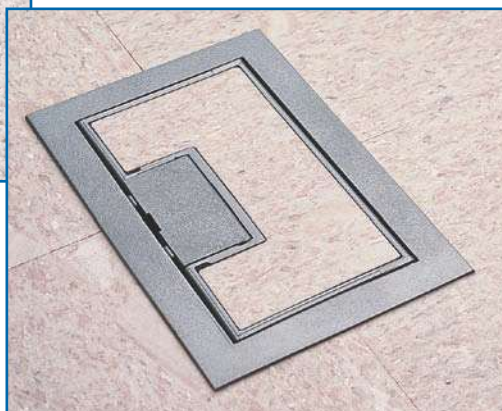


## 1-, 2-, and 3-Gang Nonmetallic



\*U.S. Patent 5,866,845

On-the-job flexibility extends to our rectangular box covers. Each one-, two-, or three-gang cover is suitable for any wiring application and can be used with any floor surface. Nonmetallic covers are even field reversible for tile or carpet. Double door feature allows easy access to the device and helps keep stray cords organized.



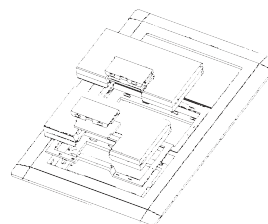
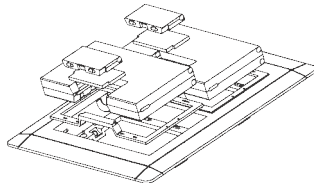
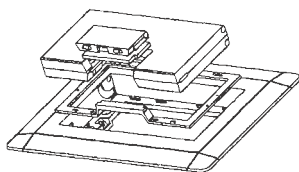
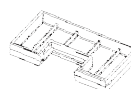
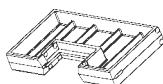
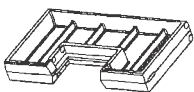
*Carlson Rectangular Floor box covers do not require a separate carpet flange. The carpet flange is part of the cover and may be removed for tile application.*

## Features

- High impact resistant thermoplastic
- Field reversible for tile or carpet
- Gasketed for a watertight seal
- Double door design
- For tile and carpet applications
- UL scrub water tested

## Specifications

### Rectangular Floor Box Covers – Nonmetallic



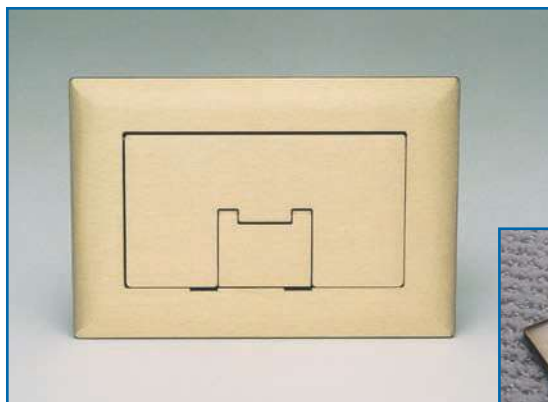
Part No.	Description	Dimensions (W x L)	Std. Ctn. Qty.	Std. Ctn. Wt. (lbs.)
E9761B	Brown Single-Gang Cover/Carpet Flange	7.13" x 5.00"	3	1.7
E9762B	Brown Double-Gang Cover/Carpet Flange	7.13" x 8.25"	9	8.5
E9763B	Brown Triple-Gang Cover/Carpet Flange	7.13" x 11.50"	6	7.5
E9761C	Caramel Single-Gang Cover/Carpet Flange	7.13" x 5.00"	3	1.7
E9762C	Caramel Double-Gang Cover/Carpet Flange	7.13" x 8.25"	9	8.5
E9763C	Caramel Triple-Gang Cover/Carpet Flange	7.13" x 11.50"	6	7.5
E9761S	Slate Single-Gang Cover/Carpet Flange	7.13" x 5.00"	3	1.7
E9762S	Slate Double-Gang Cover/Carpet Flange	7.13" x 8.25"	9	8.5
E9763S	Slate Triple-Gang Cover/Carpet Flange	7.13" x 11.50"	6	7.5



# Rectangular Floor Box Covers – Brass

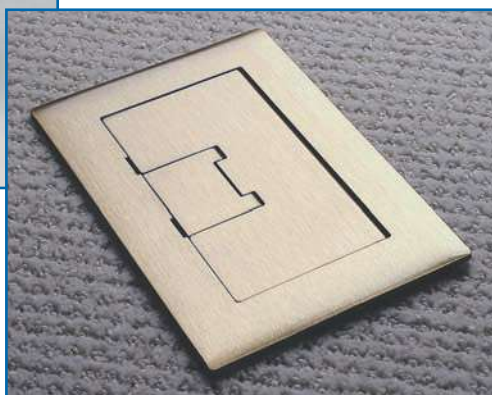


## 1-, 2-, and 3-Gang Solid Brass



\*U.S. Patent 6,265,662

Carlton® Brass rectangular Floor Box Covers add a classic touch to all floor box installations and are particularly suited for use in high-traffic areas because of the resistance to wear. The gasket gives a watertight seal, and the light lacquer finish provides extra protection.

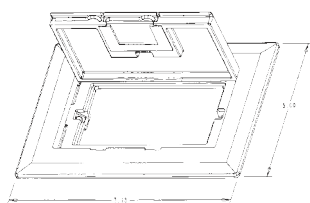


## Features

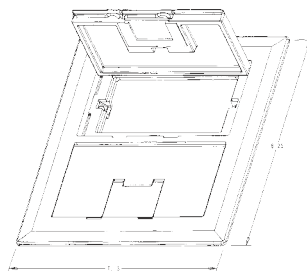
- Rugged solid brass construction.
- Brushed finish coated with a light lacquer for protection.
- Rectangular brass covers include a cord door.
- Gasketed for watertight applications.
- Rectangular brass covers allow for single, duplex, GFCI receptacles, and low voltage.
- For tile and carpet applications.
- UL scrub water tested.

## Specifications

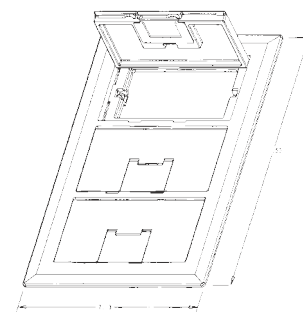
### Rectangular Floor Box Covers – Brass



**E9761BR**

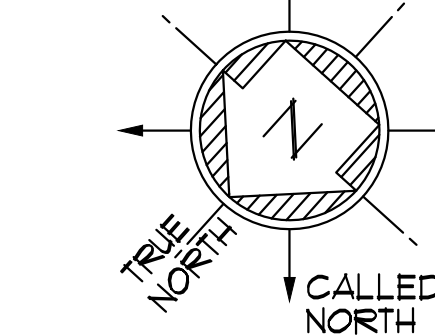
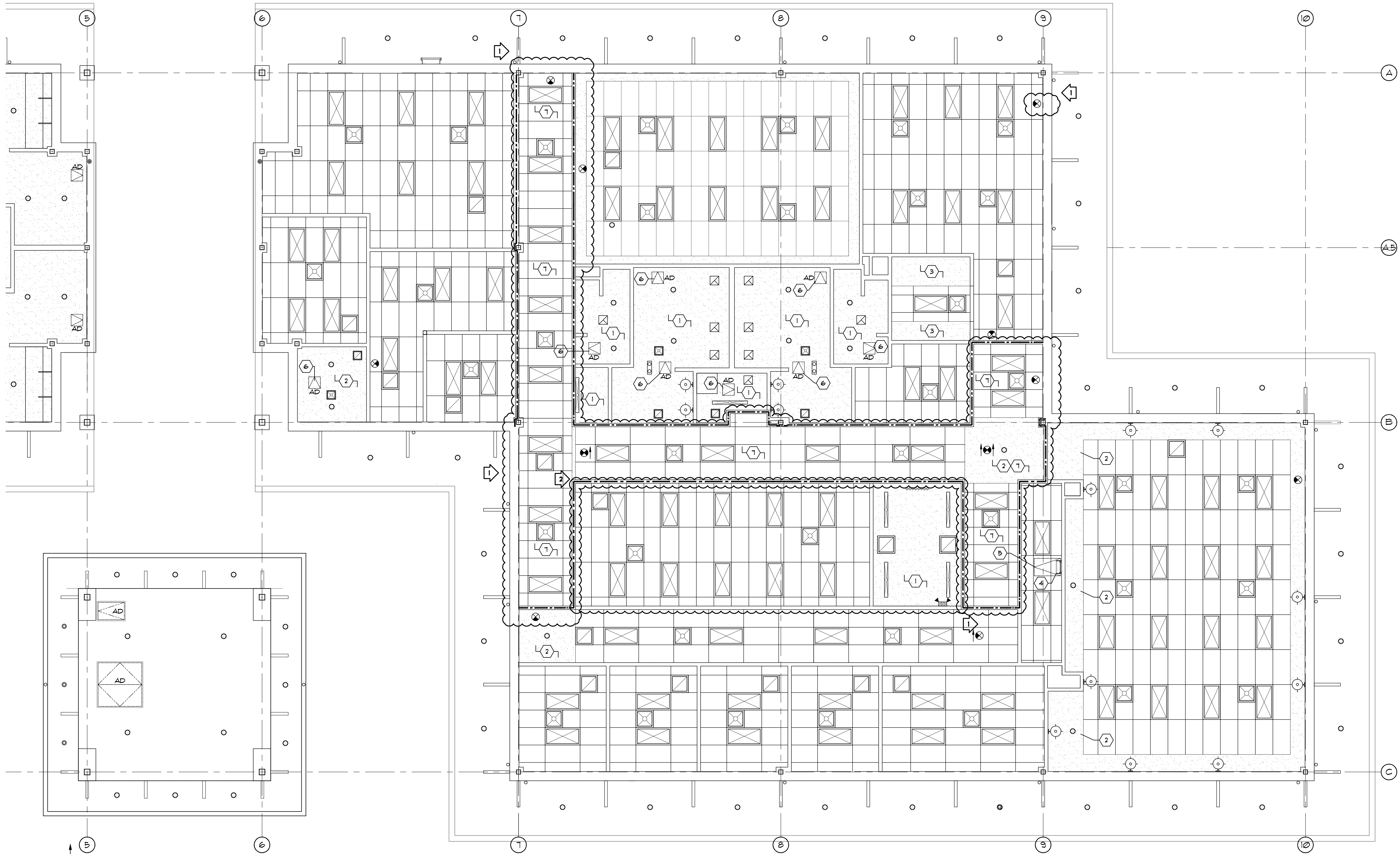


**E9762BR**



**E9763BR**

Part No.	Description	Std. Ctn. Qty.	Std. Ctn. Wt. (lbs.)
E9761BR	Brass Single-Gang Cover	3	6.8
E9762BR	Brass Double-Gang Cover	3	9.9
E9763BR	Brass Triple-Gang Cover	3	12.1
E976AK2	Rectangular Floor Box Activation Kit	3	1.3



1  
A112

## ARCHITECTURAL REFLECTED CEILING PLAN - TRANSPORTATION/ADMINISTRATION WING

3/16" = 1'-0"  
scale feet

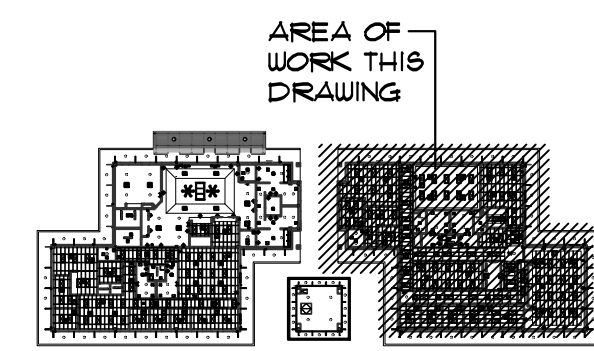
### LEGEND

- # DENOTES GENERAL NOTES ON THIS DRAWING.
- ▤ DENOTES PREFINISHED (WHITE) 2X4 SUSPENDED CEILING GRID (15/16") AND ACOUSTICAL PANELS (ARMSTRONG SECOND LOOK II W/ 2X2 PANEL). SEE ROOM FINISH SCHEDULE ON DWG #A93 FOR CEILING HEIGHT.
- ▤ DENOTES PREFABRICATED NON-RATED CEILING/ATTIC ACCESS DOOR - SEE GENERAL NOTES THIS DRAWING FOR SIZES.
- ▤ DENOTES LAY-IN 2X4 FLUORESCENT LIGHT FIXTURE FURNISHED AND INSTALLED BY ELECTRICAL SUBCONTRACTOR - COORDINATE WITH ELECTRICAL DRAWINGS AND SUBCONTRACTOR.
- ▤ DENOTES LAY-IN 2X2 FLUORESCENT LIGHT FIXTURE FURNISHED AND INSTALLED BY ELECTRICAL SUBCONTRACTOR - COORDINATE WITH ELECTRICAL DRAWINGS AND SUBCONTRACTOR.
- ▤ DENOTES CEILING MOUNTED LOW PROFILE 4' FLUORESCENT LIGHT FIXTURE FURNISHED AND INSTALLED BY ELECTRICAL SUBCONTRACTOR - COORDINATE WITH ELECTRICAL DRAWINGS AND SUBCONTRACTOR.
- ▤ DENOTES WALL MOUNTED "GOOSE NECK" STYLE LIGHT FIXTURE FURNISHED AND INSTALLED BY ELECTRICAL SUBCONTRACTOR - COORDINATE WITH ELECTRICAL DRAWINGS AND SUBCONTRACTOR.
- DENOTES CEILING MOUNTED RECESSED CAN LIGHT FIXTURE FURNISHED AND INSTALLED BY ELECTRICAL SUBCONTRACTOR - COORDINATE WITH ELECTRICAL DRAWINGS AND SUBCONTRACTOR.

- ▤ DENOTES HVAC SUPPLY DIFFUSERS FURNISHED AND INSTALLED BY MECHANICAL SUBCONTRACTOR - COORDINATE WITH MECHANICAL DRAWINGS AND SUBCONTRACTOR.
- ▤ DENOTES HVAC RETURN AIR GRILLES FURNISHED AND INSTALLED BY MECHANICAL SUBCONTRACTOR - COORDINATE WITH MECHANICAL DRAWINGS AND SUBCONTRACTOR.
- ▤ DENOTES EXHAUST FAN FURNISHED AND INSTALLED BY MECHANICAL SUBCONTRACTOR - COORDINATE WITH MECHANICAL DRAWINGS AND SUBCONTRACTOR.
- ⊗ DENOTES EMERGENCY EXIT SIGN FURNISHED AND INSTALLED BY ELECTRICAL SUBCONTRACTOR - COORDINATE WITH ELECTRICAL DRAWINGS AND SUBCONTRACTOR.
- ⬆ DENOTES EMERGENCY LIGHT FIXTURE FURNISHED AND INSTALLED BY ELECTRICAL SUBCONTRACTOR - COORDINATE WITH ELECTRICAL DRAWINGS AND SUBCONTRACTOR.

### GENERAL NOTES

- 1 DENOTES PAINTED GYPSUM WALLBOARD CEILING WITH 6-INCH METAL (18 GA.) FRAMING 12" O.C. (WITH INSULATION AT ALL VESTIBULES AND TOILETS).
- 2 DENOTES PAINTED GYPSUM WALLBOARD BULKHEAD WITH 3/8" METAL (20 GA.) FRAMING 12" O.C. - BOTTOM OF BULKHEAD TO BE 4-INCHES BELOW ADJACENT CEILING.
- 3 DENOTES PAINTED GYPSUM WALLBOARD BULKHEAD WITH 3/8" METAL (20 GA.) FRAMING 12" O.C. - BOTTOM OF BULKHEAD TO BE 1'-0" AFF.
- 4 DENOTES PREFABRICATED 18" WIDE CEILING/ATTIC ACCESS LADDER (EQUIVALENT TO ALACO MODEL 560 FIXED WALL LADDER) FURNISHED AND INSTALLED BY GENERAL CONTRACTOR.
- 5 DENOTES NON-RATED (24"x36") CEILING/ATTIC ACCESS DOOR (ABOVE) FURNISHED AND INSTALLED BY GENERAL CONTRACTOR - SEE REFLECTED CEILING PLAN DRAWING #1/A111.
- 6 DENOTES NON-RATED (16"x16") CEILING ACCESS DOOR (ABOVE) - FURNISHED AND INSTALLED BY GENERAL CONTRACTOR - SEE REFLECTED CEILING PLAN DRAWING #1/A111.
- 7 DENOTES 1-HR RATED CORRIDOR CEILING ASSEMBLY - SEE DETAIL #2/A6.4



KEY PLAN

CITY OF JACKSONVILLE / JACKSONVILLE STATION - 1300 NORTH MARINE BLVD/HWY 17 - JACKSONVILLE, NORTH CAROLINA

**h r a**

H R ASSOCIATES PA  
ARCHITECTURE  
PLANNING  
INTERIOR DESIGN

2202 WRIGHTSVILLE AVENUE  
SUITE 212  
WILMINGTON, NC 28403  
T. 910.343.6008  
F. 910.343.8761



PROJECT ARCHITECT  
JOHN W. FARABOW, JR., AIA

PROJECT MANAGER  
GEORGE GALLOP

CHECKED BY  
JOHN W. FARABOW, JR., AIA

DRAWN BY  
PAULA MILLER-JOYCE  
GEORGE GALLOP

ISSUE DATE

9/24/2018 30% DESIGN DEVELOPMENT DRAWINGS

12/03/2018 PERMIT/CONSTRUCTION SET

6/10/2019 BID DOCUMENTS

REVISIONS

1 PERMIT REVISIONS  
1/31/2020

2 POST-PERMIT REVISIONS  
3/12/2020

PROJECT NUMBER

189518.00

DRAWING NUMBER

RCP  
TRANSPORTATION/  
ADMINISTRATION  
WING

**A11.2**

10 JUNE 2019  
© 2019 by H R Associates, P.A.