

**UNCW FILM STUDIES**  
 601 S College Rd, Wilmington, NC, 28403

**PLUMBING DETAILS**

PROJECT TITLE

601 S College Rd, Wilmington, NC, 28403

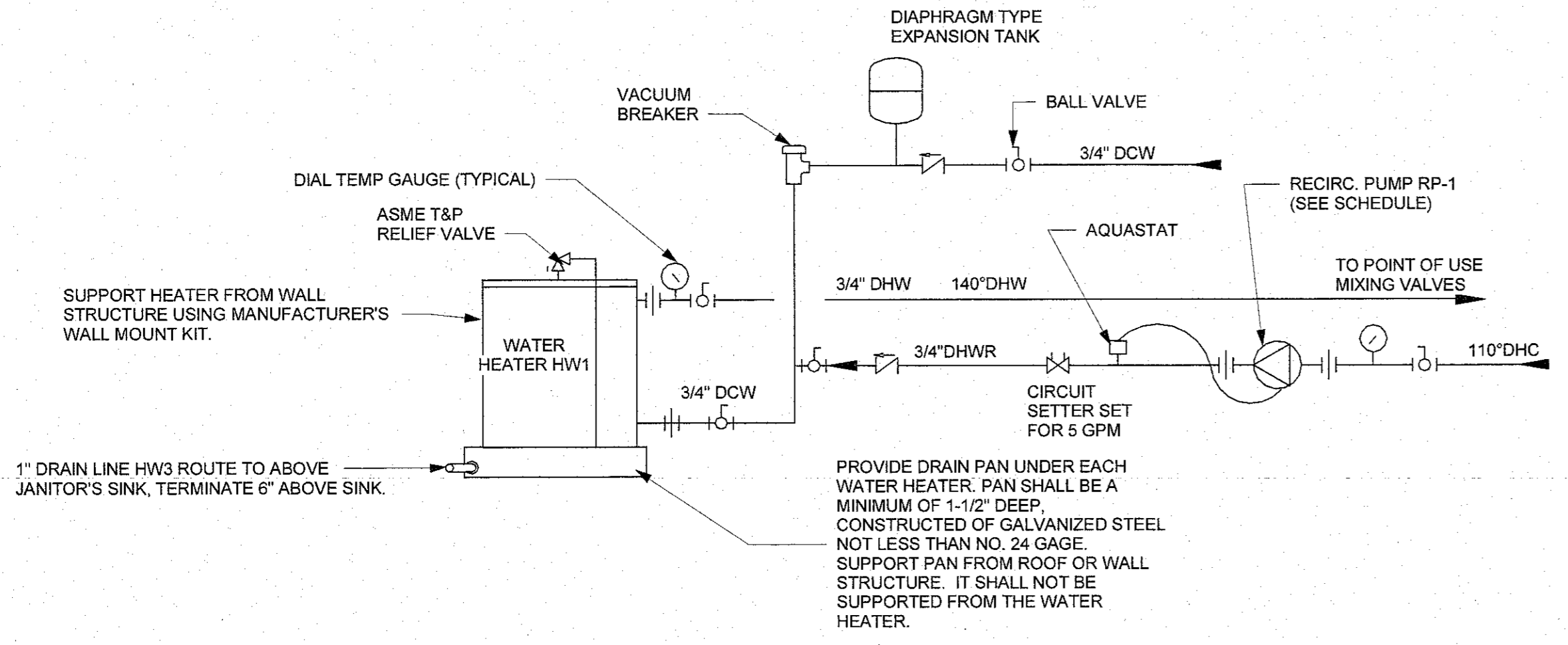
SHEET TITLE

**PLUMBING DETAILS**

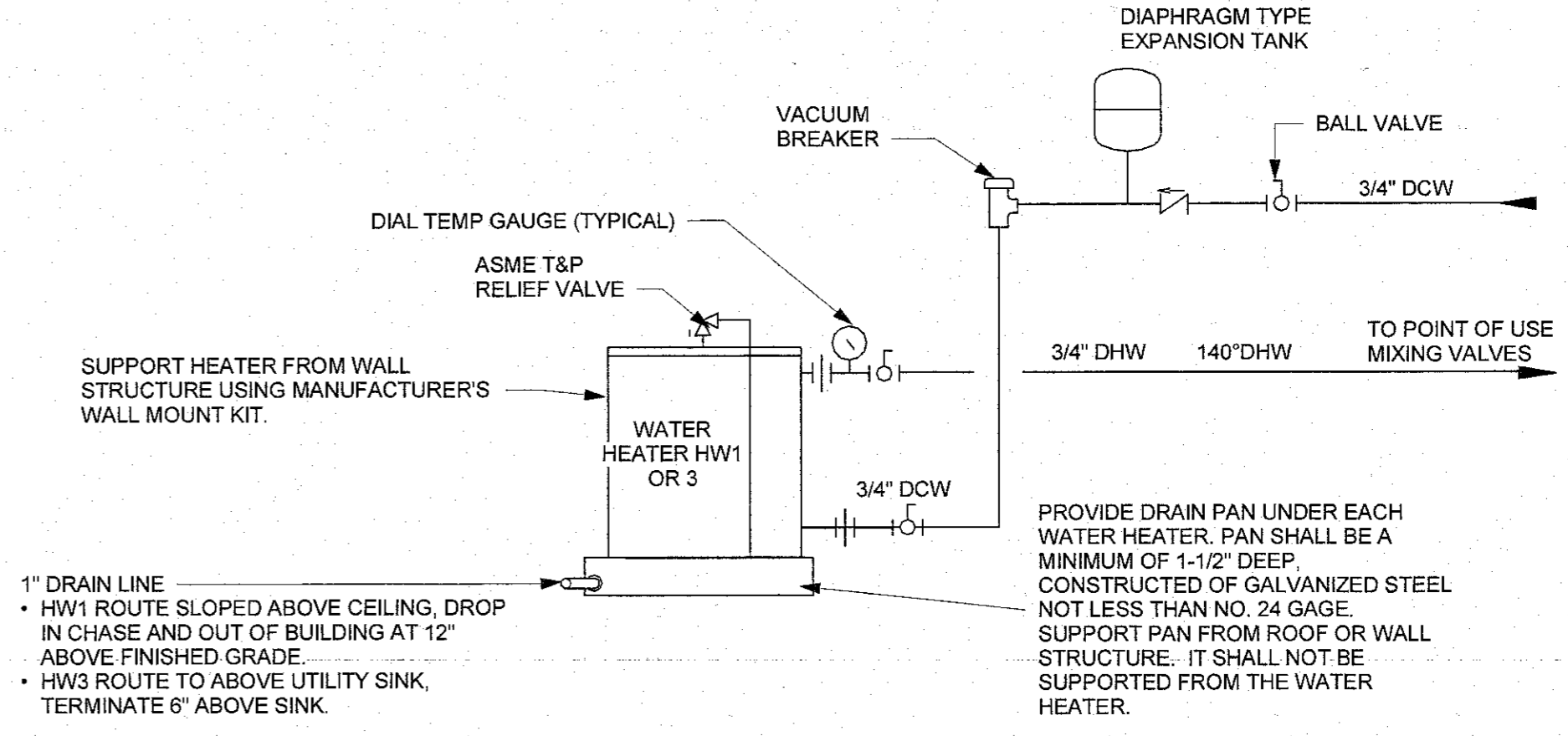
ISSUE BLOCK

| Mark        | Date            | Description |
|-------------|-----------------|-------------|
| PROJECT NO: | 2018070.01      |             |
| DATE:       | 09/23/2019      |             |
| SCALE:      | 12" = 1'-0"     |             |
| DRAWN BY:   | JWS / PROJ MGR: | IS          |

**P501**  
 COPYRIGHT © 2019



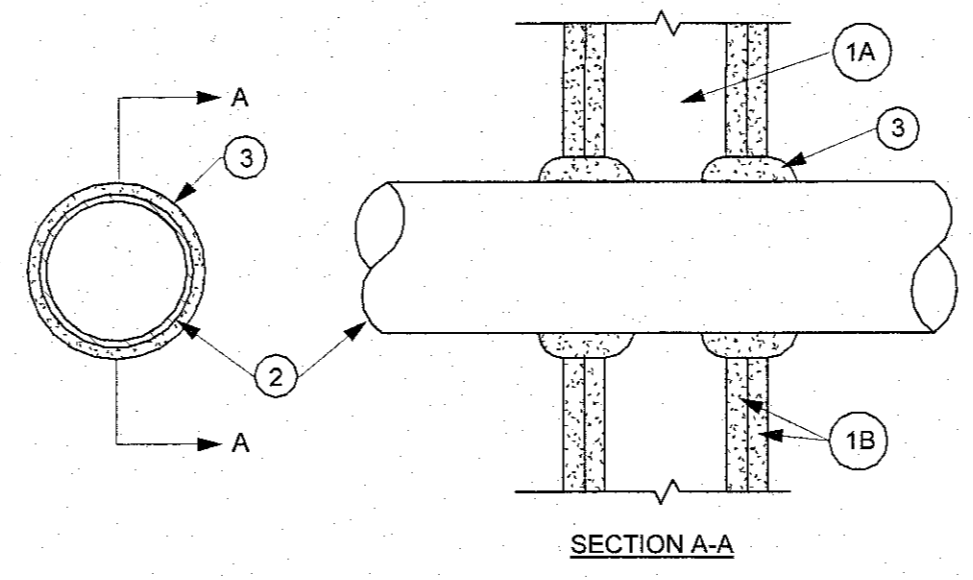
**2 WATER HEATING PIPING SCHEMATIC - HW2**  
 12" = 1'-0"



**1 WATER HEATING PIPING SCHEMATIC - HW1 & HW3**  
 12" = 1'-0"

**System No. W-L-1001**  
 June 15, 2005

F Ratings -- 1, 2, 3 and 4 Hr (See Items 2 and 3)  
 T Ratings -- 0, 1, 2, 3 and 4 Hr (See Item 3)  
 L Rating At Ambient -- less than 1 CFM/sq ft  
 L Rating At 400 F -- less than 1 CFM/sq ft



**1. Wall Assembly** — The 1, 2, 3 or 4 hr fire-rated gypsum wallboard/stud wall assembly shall be constructed of the materials and in the manner described in the individual U300 or U400 Series Wall or Partition Designs in the UL Fire Resistance Directory and shall include the following construction features:

**A. Studs** — Wall framing may consist of either wood studs (max 2 hr fire rated assemblies) or steel channel studs. Wood studs to consist of nom 2 by 4 in. (51 by 102 mm) lumber spaced 16 in. (406 mm) OC with nom 2 by 4 in. (51 by 102 mm) lumber end plates and cross braces. Steel studs to be min 3-5/8 in. (92 mm) wide by 1-3/8 in. (35 mm) deep channels spaced max 24 in. (610 mm) OC.

**B. Gypsum Board\*** — Nom 1/2 or 5/8 in. (13 or 16 mm) thick, 4 ft. (122 cm) wide with square or tapered edges. The gypsum wallboard type, thickness, number of layers, fastener type and sheet orientation shall be as specified in the individual U300 or U400 Series Design in the UL Fire Resistance Directory. Max diam of opening is 26 in. (660 mm).

**2. Through-Penetrant** — One metallic pipe, conduit or tubing installed either concentrically or eccentrically within the firestop system. The annular space between pipe, conduit or tubing and periphery of opening shall be min of 0 in / (0 mm). (point contact) to max 2 in. (51 mm) Pipe, conduit or tubing to be rigidly supported on both sides of wall assembly. The following types and sizes of metallic pipes, conduits or tubing may be used:

**A. Steel Pipe** — Nom 24 in. (610 mm) diam (or smaller) Schedule 10 (or heavier) steel pipe.  
**B. Iron Pipe** — Nom 24 in. (610 mm) diam (or smaller) service weight (or heavier) cast iron soil pipe, nom 12 in (305 mm) diam (or smaller) or Class 50 (or heavier) ductile iron pressure pipe.  
**C. Conduit** — Nom 6 in. (152 mm) diam (or smaller) steel conduit or nom 4 in (102 mm) diam (or smaller) steel electrical metallic tubing  
**D. Copper Tubing** — Nom 6 in. (152 mm) diam (or smaller) Type L (or heavier) copper tubing  
**E. Copper Pipe** — Nom 6 in. (152 mm) diam (or smaller) Regular (or heavier) copper pipe.  
**F. Through Penetrating Product\*** — Flexible Metal Piping The following types of steel flexible metal gas piping may be used:

1. Nom 2 in. (51 mm) diam (or smaller) steel flexible metal gas piping. Plastic covering on piping may or may not be removed on both sides of floor or wall assembly.

**OMEGA FLEX INC**  
 2. Nom 1 in. (25 mm) diam (or smaller) steel flexible metal gas piping. Plastic covering on piping may or may not be removed on both sides of floor or wall assembly.

**GASTITE, DIV OF TITEFLEX**  
 3. Nom 1 in. (25 mm) diam (or smaller) steel flexible metal gas piping. Plastic covering on piping may or may not be removed on both sides of floor or wall assembly.

**WARD MFG L L C**  
 3. Fill, Void or Cavity Material\* — Sealant — Min 5/8 in. (16 mm) thickness of fill material applied within the annulus, flush with surface of wall. Min 1/2 in. (13 mm) diam bead of sealant applied at point contact location.

**HILTI CONSTRUCTION CHEMICALS, DIV OF HILTI INC — FS-QNE Sealant, FS-QNE MAX Intumescent Sealant, CFS-S-SIL GG Sealant, CP601S Elastomeric Sealant, CP 606 Sealant, or CP618 Putty.**

| Max Pipe or Conduit Diam In | F Rating Hr | T Rating Hr |
|-----------------------------|-------------|-------------|
| 1                           | 1 or 2      | 0+, 1 or 2  |
| 1                           | 3 or 4      | 3 or 4      |
| 4                           | 1 or 2      | 0           |
| 6                           | 3 or 4      | 0           |
| 12                          | 1 or 2      | 0           |

\*When copper pipe is used, T Rating is 0 hr.

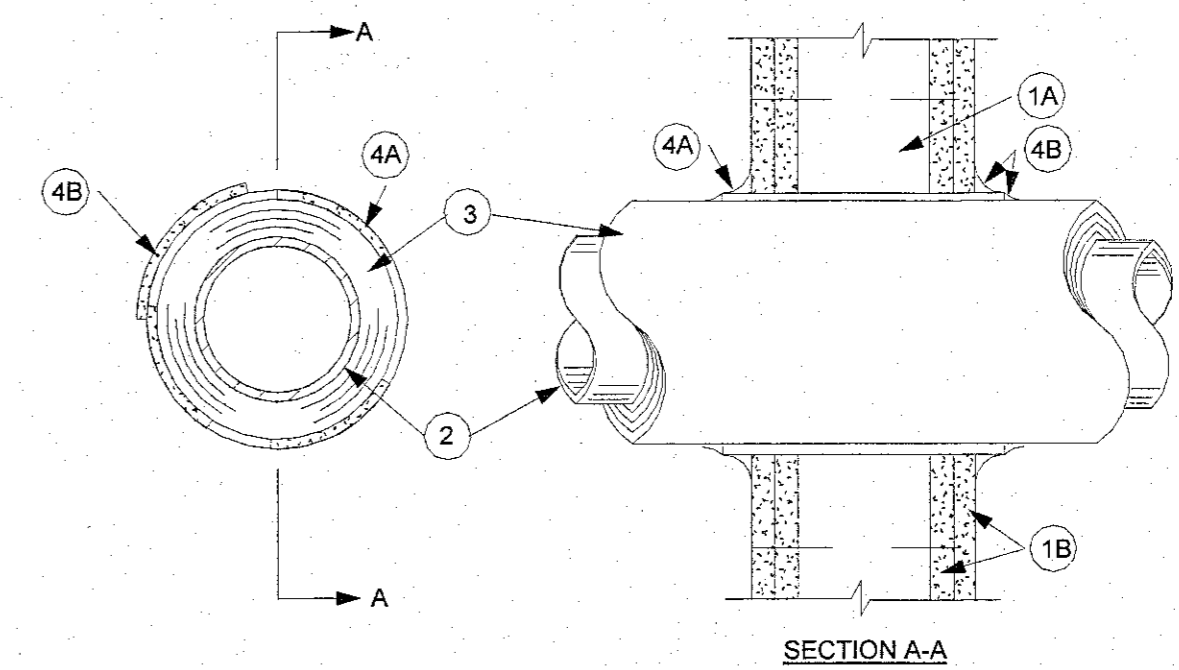
**3M COMPANY — CP 25WB+ or FB-3000 WT.**

\* Indicates such products shall bear the UL or cUL Certification Mark for jurisdictions employing the UL or cUL Certification (such as Canada), respectively.

\*Reprinted from the Online Certifications Directory with permission from UL\*  
 © 2018 UL LLC

**System No. W-L-5001**  
 May 19, 2005

F Ratings - and 2 Hr (See Item 1)  
 T Ratings - 3/4, 1 and 1-1/2 Hr (See Item 3)  
 L Rating At Ambient - 2 CFM/sq ft  
 L Rating At 400 F - Less than 1 CFM/sq ft



**1. Wall Assembly** — The 1 or 2 hr fire-rated gypsum board/stud wall assembly shall be constructed of the materials and in the manner described in the individual U300, U400 or V400 Series Wall or Partition Design in the UL Fire Resistance Directory and shall include the following construction features:

**A. Studs** — Wall framing may consist of either wood studs or steel channel studs. Wood studs to consist of nom 2 by 4 in. (51 by 102 mm) lumber spaced 16 in. (406 mm) OC with nom 2 by 4 in. (51 by 102 mm) lumber end plates and cross braces. Steel studs to be min 3-5/8 in. (92 mm) wide by 1-3/8 in. (35 mm) deep channels spaced max 24 in. (610 mm) OC.

**B. Gypsum Board\*** — Nom 5/8 in. (16 mm) thick, 4 ft (122 cm) wide with square or tapered edges. The gypsum board type, thickness, number of layers, fastener type and sheet orientation shall be as specified in the individual Design in the UL Fire Resistance Directory. Max diam of opening is 14-1/2 (368mm) in for wood stud walls and 18 in. (457 mm) for steel stud walls.

The hourly F Rating of the firestop system is 1 hr when installed in a 1 hr fire rated wall and 2 hr when installed in a 2 hr fire rated wall.

**2. Through Penetrants** — One metallic pipe or tubing to be centered within the firestop system. Pipe or tubing to be rigidly supported on both sides of wall assembly. The following types and sizes of metallic pipes or tubing may be used:

**A. Steel Pipe** — Nom 12 in. (305 mm) diam (or smaller) Schedule 10 (or heavier) steel pipe.  
**B. Copper Tubing** — Nom 6 in. (152 mm) diam (or smaller) Type L (or heavier) copper tubing.  
**C. Copper Pipe** — Nom 6 in. (152 mm) diam (or smaller) Regular (or heavier) copper pipe.

**3. Pipe Covering** — Nom 1 or 2 in. (25 or 51 mm) thick hollow cylindrical heavy density (min 3.5 pcf or 56 kg/m3) glass fiber units jacketed on the outside with an all service jacket. Longitudinal joints sealed with metal fasteners or factory-applied self-sealing lap tape. Transverse joints sealed with metal fasteners or with butt strip tape supplied with the product. When nom 1 in. (25 mm) thick pipe covering is used, the annular space between the pipe covering and the circular cutout in the gypsum wallboard layers on each side of the wall shall be min 1/4 in. (6 mm) to max 3/8 in. (10 mm) When nom 2 in. (51 mm) thick pipe covering is used, the annular space between the pipe covering and the circular cutout in the gypsum board layers on each side of the wall shall be min 1/2 in. (13 mm) to max 3/4 in. (19 mm)

See **Pipe and Equipment Covering Materials (BRGU)** category in Building Materials Directory for names of manufacturers. Any pipe covering material meeting the above specifications and bearing the UL Classification Marking with a Flame Spread Index of 25 or less and a Smoke Developed Index of 50 or less may be used.

The hourly T Rating of the firestop system is 3/4 hr when nom 1 in. (25 mm) thick pipe covering is used. The hourly T Rating of the firestop system is 1 hr and 1-1/2 hr when nom 2 in. (52 mm) thick pipe covering is used with 1 hr and 2 hr fire rated walls, respectively.

**4. Firestop System** — Installed symmetrically on both sides of wall assembly. The details of the firestop system shall be as follows:

**A. Fill, Void or Cavity Materials\* — Wrap Strip** — Nom 1/4 in. (6 mm) thick intumescent elastomeric material faced on one side with aluminum foil, supplied in 2 in. (51 mm) wide strips. Nom 2 in. (51 mm) wide strip tightly wrapped around pipe covering (foil side out) with seam butted. Wrap strip layer securely bound with steel wire or aluminum foil tape and slid into annular space approx 1-1/4 in. (32 mm) such that approx 3/4 in. (19 mm) of the wrap strip width protrudes from the wall surface. One layer of wrap strip is required when nom 1 in. (25 mm) thick pipe covering is used. Two layers of wrap strip are required when nom 2 in. (51 mm) thick pipe covering is used.

**B. Fill, Void or Cavity Materials\* — Caulk or Sealant** — Min 1/4 in. (6 mm) diam continuous bead applied to the wrap strip/wall interface and to the exposed edge of the wrap strip layer approx 3/4 in. (19 mm) from the wall surface.

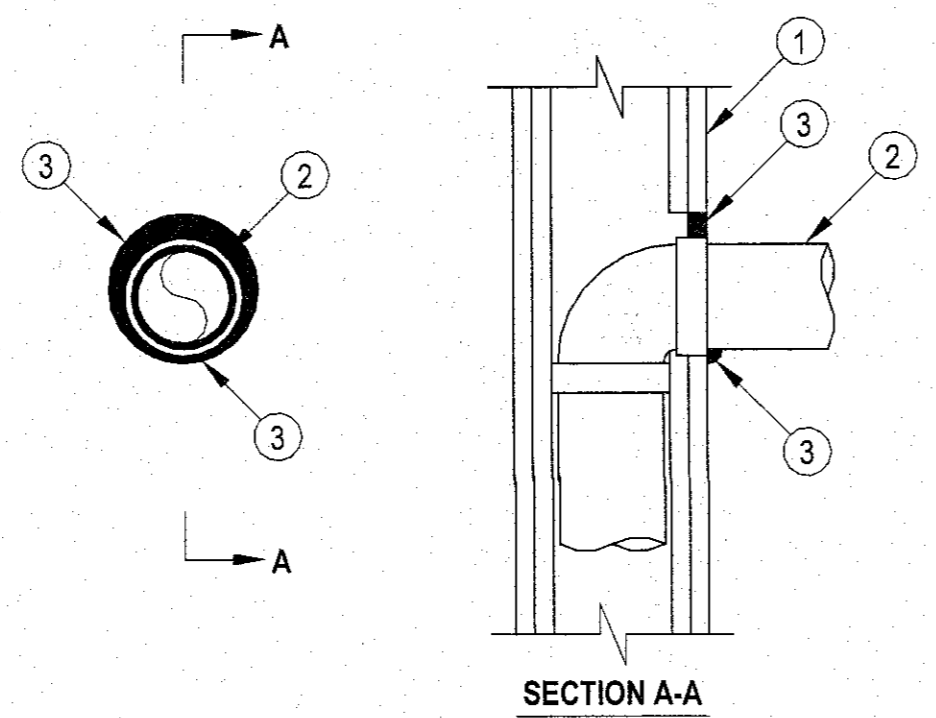
**3M COMPANY — CP 25WB+, IC 15WB+, FireDAM 150+ caulk or FB-3000 WT sealant**

\* Indicates such products shall bear the UL or cUL Certification Mark for jurisdictions employing the UL or cUL Certification (such as Canada), respectively.

\*Reprinted from the Online Certifications Directory with permission from UL\*  
 © 2018 UL LLC

**System No. W-L-1410**  
 January 26, 2015

ANSI/UL1479 (ASTM E814) CAN/ULC S115  
 F Ratings — 1 and 2 Hr (See Item 1) FT Rating — 0 Hr  
 F Ratings — 1 and 2 Hr (See Item 1) FH Ratings — 1 and 2 Hr (See Item 1)  
 T Rating — 0 Hr FTH Rating — 0 Hr



**1. Wall Assembly** — The 1 or 2 hr fire rated gypsum board/stud wall assembly shall be constructed of the materials and in the manner specified in the individual U300, U400, V400 or W400 Series Wall and Partition Designs in the UL Fire Resistance Directory and shall include the following construction features:

**A. Studs** — Wall framing may consist of either wood studs or steel channel studs. Wood studs to consist of nom 2 by 4 in. (51 by 102 mm) lumber spaced 16 in. (406 mm) OC. Steel studs to be min 3-1/2 in. (89 mm) wide and spaced max 24 in. (610 mm) OC.

**B. Gypsum Board\*** — One or two layers of nom 5/8 in. (16 mm) thick gypsum board as specified in the individual Wall and Partition Design. Max diam of opening is 5 in. (127 mm). The hourly F and FH Ratings of the firestop system are equal to the hourly fire rating of the wall assembly.

**2. Through penetrants** — One metallic pipe or conduit to be installed either concentrically or eccentrically within the firestop system. The annular space shall be 0 in. (point contact) to 1 in. (25 mm). Pipe or conduit to be rigidly supported on the penetrated side of the wall assembly. The following types and sizes of metallic pipes or conduits may be used:

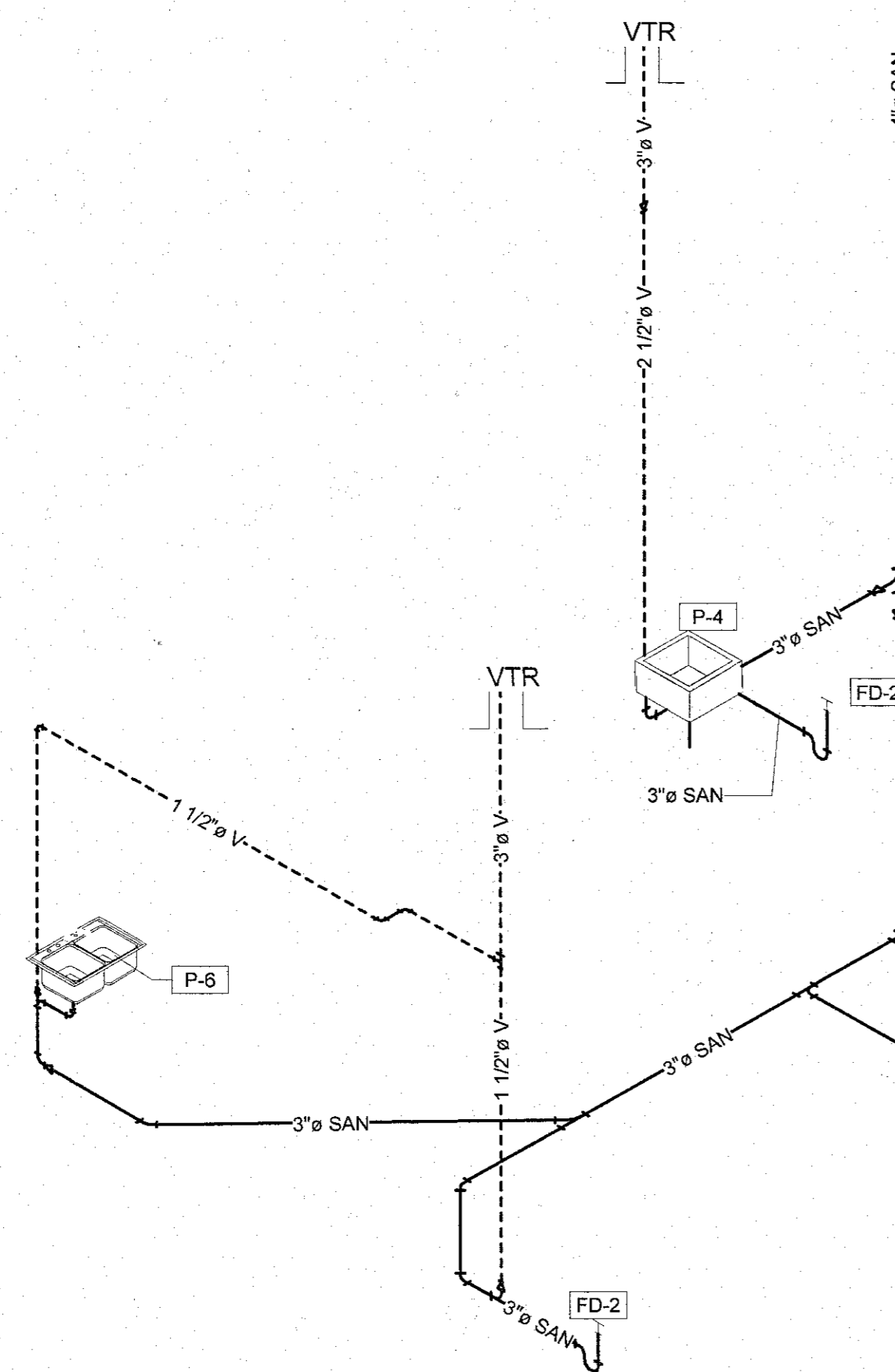
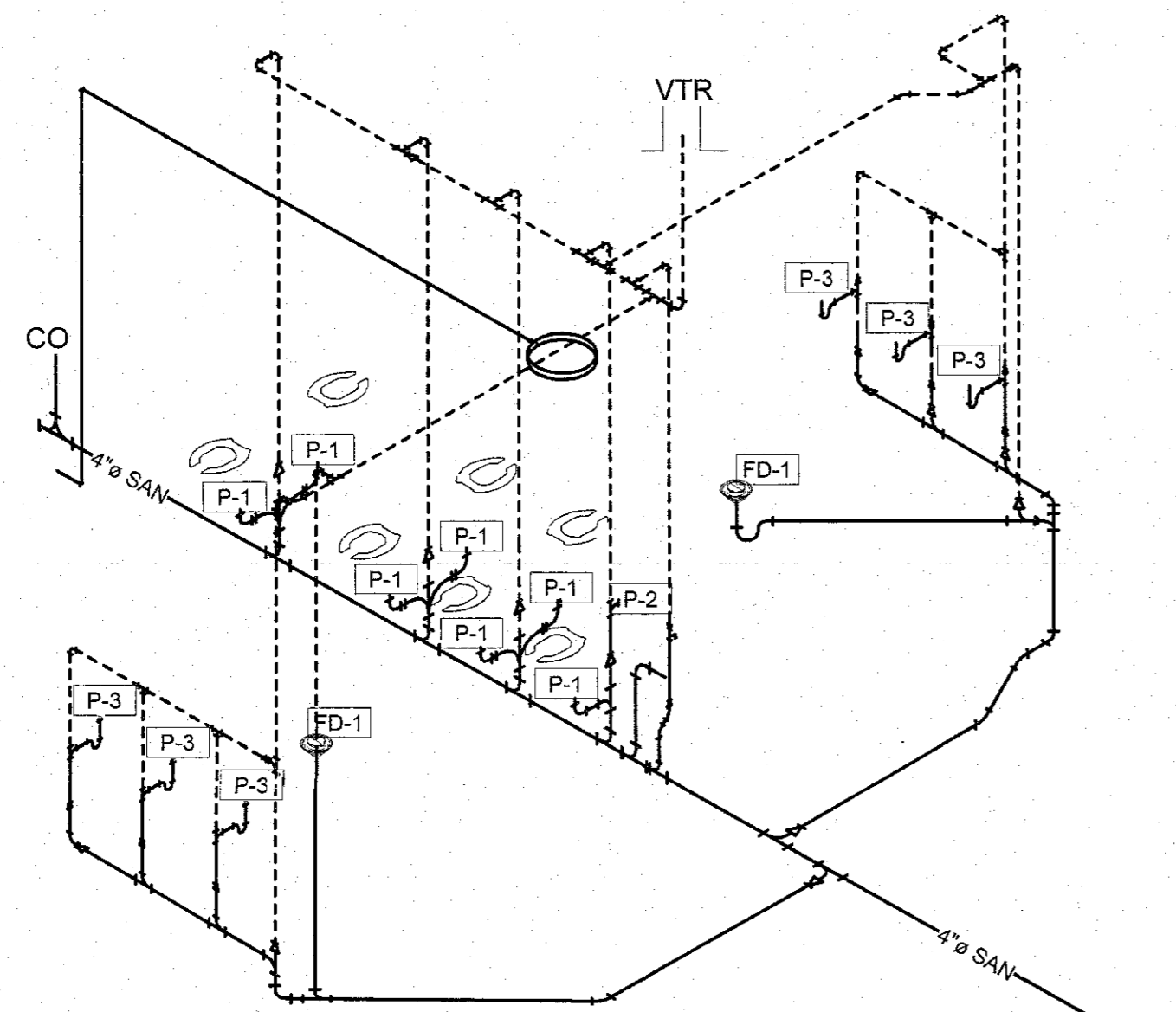
**A. Steel pipe** — Nom 3 in. (76 mm) diam (or smaller) Schedule 5 (or heavier) steel pipe.  
**B. Conduit** — Nom 3 in. (76 mm) diam (or smaller) steel electrical metallic tubing (EMT), nom 3 in. (76 mm) diam steel conduit or nom 1 in. (25 mm) diam (or smaller) flexible steel conduit.  
**C. Copper Tubing** — Nom 1 in. (25 mm) diam (or smaller) Type L (or heavier) copper tubing.  
**D. Copper Pipe** — Nom 1 in. (25 mm) diam (or smaller) Regular (or heavier) copper pipe.

**3. Fill, Void or Cavity Material\*\* — Sealant** — Min 5/8 in. (16 mm) thickness of fill material applied within the annulus, flush with surface of wall. Min 1/2 in. (13 mm) diam bead of sealant applied at point contact location.

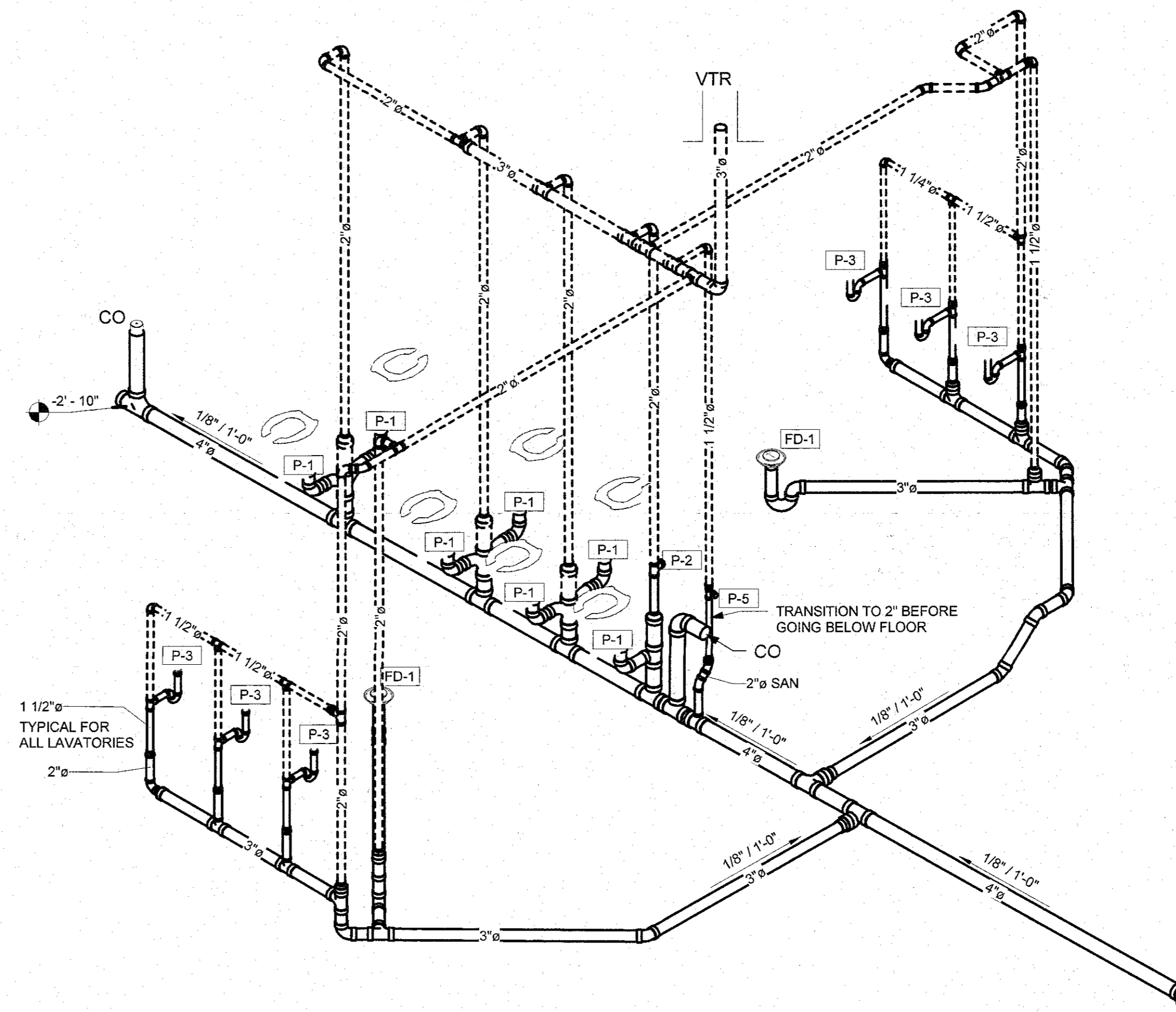
**HILTI CONSTRUCTION CHEMICALS, DIV OF HILTI INC — FS-QNE Sealant, FS-QNE MAX Intumescent Sealant, CFS-S-SIL GG Sealant, CP601S Elastomeric Sealant, CP 606 Sealant, or CP618 Putty.**

\*\* Bearing the UL Classification Mark  
 \*Reprinted from the Online Certifications Directory with permission from UL\*  
 © 2019 UL LLC.

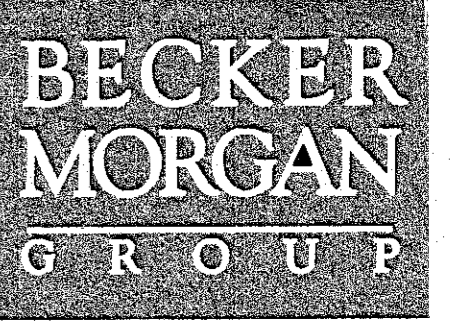
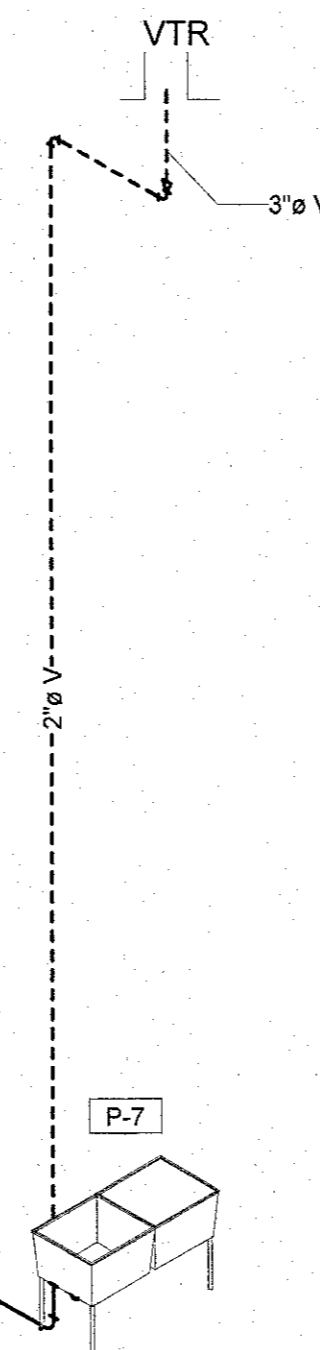




**1 ISOMETRIC OF WASTE AND VENT**



**2 ENLARGED TOILETS WASTE AND VENT THIS SHEET**



ARCHITECTURE  
PLANNING

North Carolina  
3333 Jaeckle Dr., Suite 120  
Wilmington, NC 28403  
910.341.7600

Maryland  
312 West Main St., Suite 300  
Salisbury, MD 21801  
410.546.9100

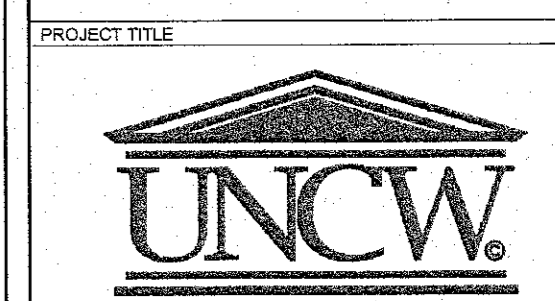
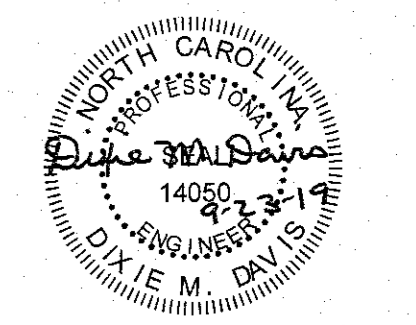
Delaware  
309 S Governors Ave  
Dover, DE 19904  
302.734.7950

Rittenhouse Station  
250 South Main Street, Suite 109  
Newark, DE 19711  
302.369.3700  
www.beckermorgan.com

**MCADAMS**  
CIVIL ENGINEERING  
2905 MERIDIAN PARKWAY  
DURHAM, NC 27713  
OFFICE: 919.361.5000

**WOODS ENGINEERING**  
STRUCTURAL ENGINEERING  
254 N. FRONT STREET, SUITE 201  
WILMINGTON, NC 28401  
910-343-8007 fax 910-343-8088

**SUD ASSOCIATES, P.A.**  
PME ENGINEERING  
1813 CHAPEL HILL ROAD  
DURHAM, NC 27707  
office: 919.493.5277 fax: 919.493.5549



**UNCW FILM STUDIES**  
601 S College Rd, Wilmington, NC, 28403

SHEET TITLE  
**ISOMETRIC OF WASTE AND VENT PIPES**

| Rev | Date | Description |
|-----|------|-------------|
|     |      |             |
|     |      |             |
|     |      |             |
|     |      |             |
|     |      |             |
|     |      |             |
|     |      |             |
|     |      |             |
|     |      |             |

PROJECT NO: 2018070.01  
DATE: 09/23/2019  
SCALE:  
DRAWN BY: JWS | PROJ MGR: IS

**P602**  
COPYRIGHT © 2019

9/22/2019 11:08:57 AM F:\2018\201818221.0 Becker Morgan - UNCW Film Studios\Sheets\21-23\_MP-FP18221\_MP\_Revit2019.rvt

| PLUMBING EXPANSION TANK |              |       |   |                            |                               |             |
|-------------------------|--------------|-------|---|----------------------------|-------------------------------|-------------|
| Mark                    | Manufacturer | Model | Description   | Max Working Water Pressure | Max Working Water Temperature | Tank Volume |
| EX1                     | Zurn Wilkins | XT-8  | Designed for installation on potable water lines between the backflow preventer or pressure reducing valve and the water heater to protect against water thermal expansion. When system pressure increases, water enters the tank's polypropylene lined water chamber which expands a diaphragm into a pre-charged air chamber, keeping system pressure below the relief valve setting. | 150.00 psi                 | 200 °F                        | 2.1 Gal     |
| EX2                     | Zurn Wilkins | XT-8  | Designed for installation on potable water lines between the backflow preventer or pressure reducing valve and the water heater to protect against water thermal expansion. When system pressure increases, water enters the tank's polypropylene lined water chamber which expands a diaphragm into a pre-charged air chamber, keeping system pressure below the relief valve setting. | 150.00 psi                 | 200 °F                        | 2.1 Gal     |
| EX3                     | Zurn Wilkins | XT-8  | Designed for installation on potable water lines between the backflow preventer or pressure reducing valve and the water heater to protect against water thermal expansion. When system pressure increases, water enters the tank's polypropylene lined water chamber which expands a diaphragm into a pre-charged air chamber, keeping system pressure below the relief valve setting. | 150.00 psi                 | 200 °F                        | 2.1 Gal     |

| WATER HEATER SCHEDULE |              |        |                   |   |             |  |               |               |
|-----------------------|--------------|--------|-------------------|---|-------------|--|---------------|---------------|
| Mark                  | Manufacturer | Model  | Description       | Comments                                | Total Watts | Gallons per hour at 100 degrees F rise | Voltage/Phase | Tank Capacity |
| HW1                   | Rheem        | EGSP10 | Tank Water Heater | Temperature to be set at 140 degrees F. | 6000 W      | 24                                     | 208 V/1       | 10.0 gal      |
| HW2                   | Rheem        | EGSP10 | Tank Water Heater | Temperature to be set at 140 degrees F. | 6000 W      | 24                                     | 208 V/1       | 10.0 gal      |
| HW3                   | Rheem        | EGSP10 | Tank Water Heater | Temperature to be set at 140 degrees F. | 6000 W      | 24                                     | 208 V/1       | 10.0 gal      |

NOTES FOR ALL WATER HEATERS:  
 1. PROVIDE OPTIONAL WALL MOUNT KIT.  
 2. PROVIDE HEAT TRAP DEVICE ON INLET AND OUTLET IF HEAT TRAPS ARE NOT INTEGRAL TO THE WATER HEATER.  
 3. PROVIDE DRAIN PAN UNDER EACH WATER HEATER.  
 4. REFER TO SCHEMATICS ON P501 FOR INSTALLATION AND PIPING GUIDANCE.

| PUMP SCHEDULE |                               |              |                      |         |                                  |                |              |                  |            |                |                   |         |       |           |                   |                |      |
|---------------|-------------------------------|--------------|----------------------|---------|----------------------------------|----------------|--------------|------------------|------------|----------------|-------------------|---------|-------|-----------|-------------------|----------------|------|
| Mark          | Service                       | Manufacturer | Series               | Model   | Description                      | Discharge Size | Suction Size | Design Flow Rate | Fluid Type | Pump Head (FT) | Rated Speed (RPM) | Voltage | Phase | Frequency | Motor Horse Power | Full Load Amps | RPM  |
| RP-1          | 140 F HOT WATER RECIRCULATION | Taco         | Cartridge Circulator | 009-SF5 | Inline Cartridge Circulator Pump | 3/4"           | 3/4"         | 5 GPM            | Water      | 17             | 2650              | 115 V   | 1     | 60 Hz     | 0.13 hp           | 1.4 A          | 3250 |

NOTE: REFER TO SPECIFICATIONS FOR APPROVED MANUFACTURERS.

| PLUMBING FIXTURE SCHEDULE |  |                                 |                                   |                   |   |   |                |                |                     |
|---------------------------|--|---------------------------------|-----------------------------------|-------------------|---|---|----------------|----------------|---------------------|
| Type Mark                 | Item Name  | Manufacturer                    | Comments                          | Model             | Description   | Accessories and Trim  | DCW Connection | DHC Connection | Sanitary Connection |
| P-1                       | Toilet   | American Standard               | OR APPROVED EQUAL.                | 3043.001          | MADERA FloWise ELONGATED 16-1/2" HIGH Less Everclean Toilet, floor mounted, vitreous china, elongated syphon jet flush action bowl, 2-1/8" fully glazed internal trapway, 10" x 12" large water surface, high efficiency 1.1 GPF to low consumption 1.6 GPF, 1-1/2" top spud and bolt caps, for use with exposed flush valve. |   |                |                | 3"                  |
| P-1A                      | Flush Valve  | SLOAN                           | OR APPROVED EQUAL. Install on P-1 | Royal 111-1.28    | Exposed Water Closet Flushometer, for floor mounted or wall hung 1-1/2" top spud bowls, 1.28 gallons per flush, manual operation.   |   | 1 1/2"         |                |                     |
| P-1B                      | Toilet Seat  | American Standard               | OR APPROVED EQUAL. Install on P-1 | 5901.100          | Toilet Seat, heavy duty solid plastic polypropylene open front less cover, with reinforced stainless steel check hinge, posts, washers and nuts, for elongated bowl.  |   |                |                |                     |
| P-2                       | Urinal   | American Standard               | OR APPROVED EQUAL.                | 6590.001          | WASHBROOK UNIVERSAL High Efficiency Urinal, wall hung for flush valve, vitreous china, wash out flush action 0.125 gpf to 1.0 gpf (0.5 lpf to 3.8 lpf), extended sides for privacy, integral flush spreader, 3/4" (19mm) top spud, wall hangers, open trap.   | One Urinal shall be mounted at Handicap Height see Arch. Drawings.  |                |                | 2"                  |
| P-2A                      | Flush Valve  | SLOAN                           | OR APPROVED EQUAL.                | Royal 186-0.125   | Exposed high efficiency urinal flushometer, for 3/4" top spud urinals, 0.125 gallons per flush, manual operation.   |   |                |                |                     |
| P-3                       | Lavatory   | American Standard               | OR APPROVED EQUAL.                | Rondalyn 0490.156 | Drop-In Sink with Single Faucet Hole, White, vitreous china, drop in, round basin with overflow, 19 inch diameter.  |   |                |                | 1 1/4"              |
| P-3A                      | Faucet   | Delta Teck-Commercial           | OR APPROVED EQUAL.                | 22C951            | Single hole mount with open grid strainer, single lever handle, 0.5 gpm vandal resistant spray outlet, polished chrome - plated finish.   |   | 1/2"           | 1/2"           |                     |
| P-4                       | Janitors Sink  | Fiat                            | OR APPROVED EQUAL.                | TSB-100           | Mop Sink, 24" x 24" x 12" (610mm x 610mm x 305mm) deep, floor mounted, precast terrazzo, with one piece stainless steel cast integral cap on all four sides and Integral S.S. Drain with S.S. strainer, 3" (75mm) outlet.   |   |                |                | 3"                  |
| P-4A                      | Faucet   | T&S Brass and Bronze Works, Inc | OR APPROVED EQUAL.                | B-2301            | Wall mounted sill faucet w/vacuum breaker, compression cartridge w/spring check, 3/4" hose thread on spout, or approved equal. Single temperature so two are required.  | Provide chrome plated grid drain. Provide 5/8" dia. Hose, 48" long, w/stainless steel clamp, DELTA TECK 28T911 or approved equal. Provide stainless steel mop hanger with 3 clamps, DELTA 28T910 or approved equal. | 3/4"           | 3/4"           |                     |
| P-5                       | Drinking fountain, barrier free bi-level, with bottle filling station. | Elkay Manufacturing             | OR APPROVED EQUAL.                | LVRCTL8WSK        | Mechanical pushbar actuated water cooler. High efficiency, hermetically sealed, R134A refrigerant, 8 GPH at 50°F delivery, stainless steel finish for whole unit, 3.8 FLA, 260 W, 115V, single phase. Provide water shut-off valve and steel pipe carrier.  |   | 3/8"           |                | 1 1/2"              |
| P-6                       | Breakroom Sink   | Elkay Manufacturing             | OR APPROVED EQUAL.                | DLR332210         | Lustertone Double Bowl Sink, 33"x22"x10-1/8" equal double bowl drop-in sink.  | Provide sound deadening coating on bottom.  |                |                | 2"                  |
| P-6A                      | Faucet   | Delta Commercial                | OR APPROVED EQUAL.                | 400LF-WF          | Classic Single Handle Kitchen Faucet with Spray   | Provide stainless steel strainer baskets.   | 1/2"           | 1/2"           |                     |
| P-7                       | Service Sink   | Fiat Products                   | OR APPROVED EQUAL.                | FLTD-II           | Floor mounted with white baked enamel steel legs Compression Molded Stone, Twin Tubs.   |   |                |                | 1 1/2"              |
| P-7A                      | Faucet   | T&S Brass and Bronze Works, Inc | OR APPROVED EQUAL.                | B-2301            | Wall mounted sill faucet w/vacuum breaker, compression cartridge w/spring check, 3/4" hose thread on spout, or approved equal. Single temperature so two are required per basin (total of 4 to be installed for P-7).   | Provide 1 1/2" drain fittings with stainless steel strainer basket. Provide 5/8" dia. Hose, 48" long, w/stainless steel clamp, DELTA TECK 28T911 or approved equal.   | 3/4"           | 3/4"           |                     |

| PLUMBING SPECIALTIES SCHEDULE |                           |                             |                      |                     |   |                |                |                     |  |
|-------------------------------|---------------------------|-----------------------------|----------------------|---------------------|---|----------------|----------------|---------------------|--|
| Type Mark                     | Item Name                 | Manufacturer                | Comments             | Model               | Description   | DCW Connection | DHW Connection | Sanitary Connection | Remarks                                  |
| FD-1                          | Floor Drain               | Josam Company               | With Trap Primer Tap | 30003-6A-50         | Floor drain, coated cast iron, two piece body, double drainage flange, invertible nonpuncturing flashing collar, weepholes, 6 inch dia. Top, nickel alloy adjustable and removable strainer. Strainer removal shall require a special tool.   |                |                | 3"                  |  |
| FD-2                          | Floor Drain               | Josam Company               |                      | 30003-7E            | Floor drain, coated cast iron, two piece body, double drainage flange, invertible nonpuncturing flashing collar, weepholes, 7 inch dia. Top, nickel alloy adjustable and removable tractor strainer. Strainer removal shall require a special tool.   |                |                | 3"                  |  |
| FWH                           | Hose Bibb                 | Woodford                    |                      | B65                 | Freezeproof wall hydrant, automatic draining, box type, loose key operated, with vacuum breaker, Woodford b65, or equivalent by Josam, J.R. Smith or Zurn.  | 3/4"           |                |                     |  |
| HB                            | Hose Bibb                 | Woodford                    |                      | No. 24              | Hose Bibb, chrome plated, loose key operated with integral vacuum breaker and anti-siphon faucet hose connection, Woodford no. 24, or equivalent by crane, Nibco, J.R. Smith, Watts or Wilkins  | 3/4"           |                |                     |  |
| MV-1                          | Thermostatic Mixing Valve | Lawler                      | Provide 3/4" Size    | Model 570 Lead Free | Thermostatic Mixing Valve to maintain and limit mixed hot water to a desired, selectable temperature. The valve can be set to any temperature between 80°F and 120°F with flow rates as low as 0.5 gpm and as high as 12 gpm, Lawler or approved equal by Haws, Leonard Water Temperature Controls, or Watts. | 3/4"           | 3/4"           |                     | Set to 110 degree F, discharge size 3/4" |
| SA-A                          | Shock Absorber            | Josam                       | PDI Size A           | Series 75000-S      | Water Hammer Arrestor. The Arrestor features Lead Free* construction to comply with Lead Free* requirements.  |                |                |                     |  |
| SA-D                          | Shock Absorber            | Josam                       | PDI Size D           | Series 75000-S      | Water Hammer Arrestor. The Arrestor features Lead Free* construction to comply with Lead Free* requirements.  |                |                |                     |  |
| TP-1                          | Trap Primer               | Precision Plumbing Products |                      | P2-500              | Trap Primer Valve to be installed on cold water lines of 1-1/2" diameter or less, a pressure drop of 10 psig activates primer valve. Provide DU-U Distribution unit so 2 floor drains can be served.  | 1/2"           |                |                     |  |
| WM                            | Water Meter               | NEPTUNE TECHNOLOGY GROUP    | 2" Meter Size        | TRUFLO              | Furnished by Mechanical Controls Sub-Contractor, installed by Plumbing Contractor   | 2"             |                |                     |  |



ARCHITECTURE PLANNING

North Carolina  
 3333 Jaekle Dr., Suite 120  
 Wilmington, NC 28403  
 910.341.7600

Maryland  
 312 West Main St, Suite 300  
 Salisbury, MD 21801  
 410.546.9100

Delaware  
 309 S Governors Ave  
 Dover, DE 19904  
 302.734.7950

Rittenhouse Station  
 250 South Main Street, Suite 109  
 Newark, DE 19711  
 302.369.3700  
 www.beckermorgan.com

MCADAMS

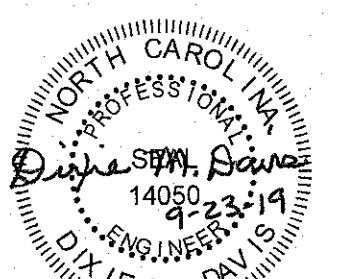
CIVIL ENGINEERING  
 2905 MERIDIAN PARKWAY  
 DURHAM, NC 27713  
 OFFICE: 919.361.5000

WOODS ENGINEERING

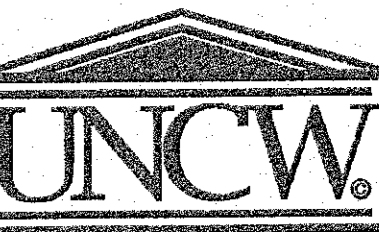
STRUCTURAL ENGINEERING  
 254 N. FRONT STREET, SUITE 201  
 WILMINGTON, NC 28401  
 910-343-8007 fax 910-343-8088

SUD ASSOCIATES, P.A.

PME ENGINEERING  
 1813 CHAPEL HILL ROAD  
 DURHAM, NC 27707  
 office: 919.493.5277 fax: 919.493.5549



PROJECT TITLE



UNCW FILM STUDIES

601 S College Rd, Wilmington, NC, 28403

SHEET TITLE

PLUMBING SCHEDULES

ISSUE CHECK

Mark Date Description

PROJECT NO: 2018070.01

DATE: 09/23/2019

SCALE:

DRAWN BY: JWS PROJ MGR: IS

P603

COPYRIGHT © 2019

9/22/2019 3:28:06 PM F:\2018\18182210 Becker Morgan UNCW Film Studies\Sheets\21-C3\_MP-FP1\8221\_MP-Rev1\2019.rvt