

SURVEY FINDINGS

Building: NH100

Friable ACM identified

<i>DESCRIPTION</i>	<i>LOCATION</i>	<i>Date</i>	<i>Quantity</i>
CLOTH LAGGING MATERIAL	BASEMENT F: B002 EMERGENCY GENERATOR EXHAUST ASSOCIATED WITH FIRE SPRINKLER SYSTEM, WHITE 8"	12/17/1999	40 LF
CLOTH LAGGING MATERIAL	BASEMENT MECHANICAL, EXHAUST FLUES ASSOCIATED WITH EMERGENCY GENERATORS, WHITE 14"	12/17/1999	300 LF
CLOTH LAGGING MATERIAL	BASEMENT MECHANICAL, EXHAUST FLUES ASSOCIATED WITH EMERGENCY GENERATORS, WHITE 14"	9/17/2002	300 LF
CLOTH LAGGING MATERIAL	BASEMENT F: B002 EMERGENCY GENERATOR EXHAUST ASSOCIATED WITH FIRE SPRINKLER SYSTEM, WHITE 8"	10/6/2006	40 LF
CLOTH LAGGING MATERIAL	BASEMENT F: B002 EMERGENCY GENERATOR EXHAUST ASSOCIATED WITH FIRE SPRINKLER SYSTEM, WHITE 8"	8/12/2014	40 LF
CLOTH LAGGING MATERIAL	BASEMENT F: B002 EMERGENCY GENERATOR EXHAUST ASSOCIATED WITH FIRE SPRINKLER SYSTEM, WHITE 8"	9/15/2009	40 LF
CLOTH LAGGING MATERIAL	BASEMENT MECHANICAL, EXHAUST FLUES ASSOCIATED WITH EMERGENCY GENERATORS, WHITE 14"	9/15/2009	300 LF
CLOTH LAGGING MATERIAL	BASEMENT MECHANICAL, EXHAUST FLUES ASSOCIATED WITH EMERGENCY GENERATORS, WHITE 14"	8/12/2014	300 LF

Non-friable ACM identified

<i>DESCRIPTION</i>	<i>LOCATION</i>	<i>Date</i>	<i>Quantity</i>
LABORATORY COUNTER TOP	D SECTION, SECOND FLOOR LAB W241; H SECTION LAB S213A AND S102	9/15/2009	22 SF
SINK UNDERCOATING,	EAST WING G, E004; SECOND FLOOR H, S245; SECOND FLOOR C, NE; NORTH WARD CENTER, N461	12/17/1999	8 EA
FIBERGLASS INSULATION SEALANT	AT CAPPINGS AND FITTINGS IN MECHANICAL ROOMS (SEE HM16)	12/17/1999	300 EA

CAPPING INSULATION ON	MECHANICAL ROOMS THROUGHOUT (SEE ALSO HM16 ON STEAM LINES)	12/17/1999	2,100	SF
12" OLIVE FLOOR TILE AND ADHESIVE	FIRST FLOOR A AND B UTILITY AND CLOSET SECTIONS (NORTH)	9/15/2009	24	SF
DUCT SEALANT, BROWN	MAIN BASEMENT MECHANICAL SPACE, POTENTIAL HIDDEN IN WALLS OR UNDER FIBERGLASS INSULATION	12/17/1999	1,200	SF
12" BEIGE w/TAN FLOOR TILE AND ADHESIVE	BASEMENT MECHANICAL CONTROL ROOM E008	9/15/2009	120	SF
ROOFING SEALANT, GRAY	RESIDUAL ROOFING MATERIAL AT HATCHES, VENTS, PIPES	9/15/2009	16	SF
FIBERGLASS INSULATION SEALANT	*AT CAPPINGS AND FITTINGS* IN BASEMENT AND MECHANICAL SPACES THROUGHOUT (UNABLE TO DETERMINE EXACT AREAS)	12/17/1999	8,300	EA
12" GRAY FLOOR TILE AND ADHESIVE	PREDOMINANT TILE THROUGHOUT, MIXED USE	12/17/1999	85,000	SF
GASKET MATERIAL	BASEMENT MAIN MECHANICAL TOOL ROOM E009; BOILER EQUIPMENT/ PIPING FLANGES	9/15/2009	4	SF
GASKET MATERIAL	BASEMENT MAIN MECHANICAL TOOL ROOM E009; BOILER EQUIPMENT/ PIPING FLANGES	9/15/2009	2	SF
TRANSITE PANEL MATERIAL	LABORATORY FUME HOOD, H SECTION, S102	9/15/2009	10	SF
SINK UNDERCOATING,	EAST WING G, E004; SECOND FLOOR H, S245; SECOND FLOOR C, NE; NORTH WARD CENTER, N461	10/6/2006	8	EA
FIBERGLASS INSULATION SEALANT	*AT CAPPINGS AND FITTINGS* IN BASEMENT AND MECHANICAL SPACES THROUGHOUT (UNABLE TO DETERMINE EXACT AREAS)	9/17/2002	8,000	EA
DUCT SEALANT, BROWN	MAIN BASEMENT MECHANICAL SPACE, POTENTIAL HIDDEN IN WALLS OR UNDER FIBERGLASS INSULATION	10/6/2006	1,200	SF
DUCT SEALANT, BROWN	MAIN BASEMENT MECHANICAL SPACE, POTENTIAL HIDDEN IN WALLS OR UNDER FIBERGLASS INSULATION	9/17/2002	1,200	SF
CAPPING INSULATION ON	MECHANICAL ROOMS THROUGHOUT (SEE ALSO HM16 ON STEAM LINES)	10/6/2006	2,100	SF
FIBERGLASS INSULATION SEALANT	*AT CAPPINGS AND FITTINGS* IN BASEMENT AND MECHANICAL SPACES THROUGHOUT (APPEARS TO BE STEAM LINES)	10/6/2006	8,300	EA
12" GRAY FLOOR TILE AND ADHESIVE	PREDOMINANT TILE THROUGHOUT, MIXED USE	10/6/2006	45,000	SF

12" GRAY FLOOR TILE AND ADHESIVE	PREDOMINANT TILE THROUGHOUT, MIXED USE	9/17/2002	55,000	SF
12" ORANGE FLOOR TILE AND ADHESIVE	COMMON TILE IN BASEMENT AND FIRST FLOOR A BUT CAFETERIA AREA APPEARS RENOVATED; OTHER AREAS	9/15/2009	3,000	SF
12" GRAY FLOOR TILE AND ADHESIVE	PREDOMINANT TILE THROUGHOUT, MIXED USE	9/15/2009	30,000	SF
SINK UNDERCOATING,	EAST WING G, E004; SECOND FLOOR H, S245; SECOND FLOOR C, NE; NORTH WARD CENTER, N461	9/15/2009	6	EA
SINK UNDERCOATING,	EAST WING G, E004; SECOND FLOOR H, S245; SECOND FLOOR C, NE; NORTH WARD CENTER, N461	9/17/2002	8	EA
GASKET MATERIAL	BASEMENT MAIN MECHANICAL TOOL ROOM E009; BOILER EQUIPMENT/ PIPING FLANGES	8/12/2014	8	SF
GASKET MATERIAL	BASEMENT MAIN MECHANICAL TOOL ROOM E009; BOILER EQUIPMENT/ PIPING FLANGES	8/12/2014	4	SF
12" BEIGE w/TAN FLOOR TILE AND ADHESIVE	BASEMENT MECHANICAL CONTROL ROOM E008	8/12/2014	120	SF
12" OLIVE FLOOR TILE AND ADHESIVE	FIRST FLOOR A AND B UTILITY AND CLOSET SECTIONS (NORTH)	8/12/2014	24	SF
ROOFING SEALANT, GRAY	RESIDUAL ROOFING MATERIAL AT STACK ON F ROOF (OVER MECHANICAL ZONE)	8/12/2014	16	SF
LABORATORY COUNTER TOP	H SECTION LAB S213A AND S102 D SECTION, SECOND FLOOR LAB W241 REMOVED;	8/12/2014	8	SF
TRANSITE PANEL MATERIAL	LABORATORY FUME HOOD, H SECTION, S102	8/12/2014	10	SF
SINK UNDERCOATING,	EAST WING G, E004; SECOND FLOOR H, S245; SECOND FLOOR C, NE; NORTH WARD CENTER, N461	8/12/2014	5	EA
12" GRAY FLOOR TILE AND ADHESIVE	OLD TILE, BEING REPLACED THROUGHOUT, REMAINS 1B, C, E, F, 2H	8/12/2014	15,000	SF
12" ORANGE FLOOR TILE AND ADHESIVE	REPLACED IN CAFETERIA AREA; ADDL MATERIALS FOUND IN; BASEMENT A, 1A, F (SEE ALSO HM137)	8/12/2014	2,000	SF
RESIDUAL MASTIC	POST RENOVATION AREAS, PATCHES IDENTIFIED HIT AND MISS THROUGHOUT, REFER TO ORIGINAL 1999 ACM AREAS FOR REFERENCE OF POTENTIAL	8/12/2014	1,500	SF

FIBERGLASS INSULATION SEALANT	*AT CAPPINGS AND FITTINGS* IN BASEMENT AND MECHANICAL SPACES THROUGHOUT (APPEARS TO BE STEAM LINES)	9/15/2009	8,300	EA
FIBERGLASS INSULATION SEALANT	*AT CAPPINGS AND FITTINGS* IN BASEMENT AND MECHANICAL SPACES THROUGHOUT (UNABLE TO DETERMINE EXACT AREAS)	8/12/2014	8,300	EA
CAPPING INSULATION ON	MECHANICAL ROOMS THROUGHOUT (SEE ALSO HM16 ON STEAM LINES)	8/12/2014	2,100	SF
CAPPING INSULATION ON	MECHANICAL ROOMS THROUGHOUT (SEE ALSO HM16 ON STEAM LINES)	9/15/2009	2,100	SF
FIBERGLASS INSULATION SEALANT	AT CAPPINGS AND FITTINGS IN MECHANICAL ROOMS (SEE HM16)	8/12/2014	300	EA
FIBERGLASS INSULATION SEALANT	AT CAPPINGS AND FITTINGS IN MECHANICAL ROOMS (SEE HM16)	9/15/2009	300	EA
DUCT SEALANT, BROWN	MAIN BASEMENT MECHANICAL SPACE, POTENTIAL HIDDEN IN WALLS OR UNDER FIBERGLASS INSULATION	9/15/2009	1,200	SF
DUCT SEALANT, BROWN	MAIN BASEMENT MECHANICAL SPACE, POTENTIAL HIDDEN IN WALLS OR UNDER FIBERGLASS INSULATION	8/12/2014	1,200	SF

Tested Non ACM or REMOVED Materials

<i>DESCRIPTION</i>	<i>LOCATION</i>	<i>Date</i>	<i>Quantity</i>
FIBERGLASS INSULATION SEALANT	HVAC DUCTS THROUGHOUT	12/17/1999	
DUCT SEALANT, GRAY	HVAC DUCTS THROUGHOUT (SEE ALSO HM12)	12/17/1999	
12" ACOUSTICAL TILE	N009	12/17/1999	
2'x2' CEILING TILE,	S205A, S205B	12/17/1999	
2'x2' CEILING TILE,	C248, C250, C251, C252, C255A, C255C	12/17/1999	
12" PINK FLOOR TILE AND ADHESIVE	SECOND FLOOR D AND E SECTIONS JANITOR/ COMMUNICATIONS CLOSETS	9/15/2009	
12" ACOUSTICAL TILE	C100, C100A, C100B, C103, C106, C107, C107A, C107B, C107C, C121, C122, C123, N137, N137A, N137B, N138, N139, N140, N141, N142, N143, N143A, N144, N144A, N144B, N144D, N144E, N145, N145A, N146, N146A, S100, S100A, S100B, S101A, S103A, S119, S120E, S120F, S	12/17/1999	
2'x2' CEILING TILE,	VARIOUS LOCATIONS THROUGHOUT BUILDING	12/17/1999	
BASE COVE/MASTIC,	C160, C160A	12/17/1999	
CLOTH LAGGING MATERIAL	MECHANICAL ROOMS; SEE HM03, 11, 16	12/17/1999	

CAPPING INSULATION ON	B001, M101, M102, M103, M106, M108, M109, M112, M113, M200, M201, M202, M204, M205, M207, M208, M209, M301, M401	12/17/1999
CLOTH LAGGING MATERIAL	MECHANICAL ROOMS THROUGHOUT AT CAPPINGS AND FITTINGS (SEE HM16)	12/17/1999
ROOF FLASHING/SEALER MATERIAL	ROOF SEAM PATCHING	9/15/2009
DUCT SEALANT, GRAY	EXTERIOR ROOF DUCTS, E ROOF SECTION	9/15/2009
TANK INSULATION	B001/ BASEMENT MECHANICAL DEARATOR, w/LAGGING,	12/17/1999
TANK INSULATION	B001/ BASEMENT MECHANICAL LARGE DEAEERATOR TANK	12/17/1999
BOILER FLUE INSULATION,	B001/ BASEMENT MECHANICAL	12/17/1999
FLOOR TILE	S200A, S200B, W200, W200A, W202C, W202D, W214, VARIOUS LOCATIONS THROUGHOUT NORTH WING OF SECOND FLOOR	12/17/1999
DRYWALL AND JOINT MATERIAL	THROUGHOUT BUILDING EXCEPT MECHANICAL ROOMS AND STAIRWELLS	12/17/1999
EXTERIOR CAULKING,	ROOF METAL FLASHING/ BRICK JOINTS	9/15/2009
ROOFING MATERIAL,	ROOF METAL FLASHING SEAMS	9/15/2009
SINK UNDERCOATING,	N408A, N434A, N448	2/4/2000
PIPE INSULATION	B001/ BASEMENT MECHANICAL STEAM LINE	12/17/1999
TEXTURED CEILING MATERIAL	C266, C267, C268, VARIOUS LOCATIONS THROUGHOUT SECOND FLOOR OF NORTH WING, VARIOUS LOCATIONS THROUGHOUT THIRD AND FOURTH FLOORS EXCEPT CORRIDORS	12/17/1999
12" ORANGE FLOOR TILE AND ADHESIVE	COMMON TILE IN BASEMENT AND FIRST FLOOR A	12/17/1999
DUCT SEALANT, TAN	BASEMENT MECHANICAL ROOM E009 AND OTHER MAIN DUCT HVAC DUCTS (ON FIBERGLASS SEAMS)	9/15/2009
MUDDDED FITTING(S)	BASEMENT MECHANICAL E005	9/15/2009
ROLLED ROOFING	PRIMARY ROOF MEMBRANE THROUGHOUT	9/15/2009
VINYL THRESHOLD MATERIAL	BASEMENT MECHANICAL CONTROLL ROOM E008	9/15/2009
ROOFING SEALANT, BLACK	RESIDUAL ROOFING MATERIAL AT HATCHES, VENTS, PIPES	9/15/2009
SINK UNDERCOATING,	SECOND FLOOR C SECTION, ENT/EYE WAITING AREA W258	9/15/2009
GASKET MATERIAL	BASEMENT MECHANICAL TOOL ROOM, E009	9/15/2009

12" BEIGE w/WHITE FLOOR TILE AND ADHESIVE	SECOND FLOOR D AND E SECTIONS JANITOR/ COMMUNICATIONS CLOSETS	9/15/2009
ROOFING MATERIAL,	EXTERIOR GROUND DEBRIS, NORTHSIDE A, B, C SECTIONS	9/15/2009
CARPET ADHESIVE	THROUGHOUT BUILDING (NEW INSTALLS)	9/15/2009
PLASTER MATERIAL	WALL COATING, B SECTION N101 CORRIDOR	9/15/2009
12"x12" FLOOR TILE/MASTIC,	B SECTION SECOND FLOOR	9/15/2009
RESIDUAL MASTIC	PATCHES IDENTIFIED HIT AND MISS THROUGHOUT	9/15/2009
TANK INSULATION	M109	12/17/1999
DUCT SEALANT, BROWN	HVAC DUCTS THROUGHOUT BUILDING EXCEPT MECHANICAL ROOMS	12/17/1999
BUILT-UP ROOFING	ROOFING SYSTEM THROUGHOUT	12/17/1999
EXTERIOR CAULKING,	ROOF E PARAPET CAP/ FLASHING	9/15/2009
EXTERIOR CAULKING,	ROOF E PARAPET CAP/ FLASHING	9/15/2009
BASE COVE/MASTIC,	VARIOUS LOCATIONS THROUGHOUT BUILDING	12/17/1999
DRYWALL AND JOINT MATERIAL	THROUGHOUT STAIRWELLS, VARIOUS RESTROOMS THROUGHOUT, VARIOUS OTHER CLEAN WORK AND KITCHEN AREAS THROUGHOUT BUILDING	12/17/1999
SINK UNDERCOATING,	H SECTION S102; G SECTION WEST	12/17/1999
FLOOR TILE	N001, N032, VARIOUS LOCATIONS THROUGHOUT CENTRAL AREA OF FIRST FLOOR, THROUGHOUT PATHOLOGY LAB AREA, W158; VARIOUS LOCATIONS THROUGHOUT CENTRAL AREA, SOUTH AND WEST WINGS OF SECOND FLOOR; VARIOUS LOCATIONS THROUGHOUT THIRD AND FOURTH FLOORS (PREDOMINANT	12/17/1999
FLOOR TILE AND ADHESIVE, UNDER OTHER	UNDER HM155, G SECTION FIRST FLOOR E148	9/15/2009
12" ACOUSTICAL TILE AND ADHESIVE	DEBRIS ABOVE CEILING, C SECTION W200A	9/15/2009
TANK INSULATION	BASEMENT MAIN MECHANICAL ROOM, E005	9/17/2002
MISCELLANEOUS SEALANT	MECHANICAL AND UTILITY ROOMS THROUGHOUT; CHASES AND OVERHEADS AT CONDUIT/ CABLE PENETRATIONS	9/17/2001
MUDDER FITTING(S)	MAIN BASEMENT MECHANICAL ROOM, EMERGENCY GENERATORS E005	10/6/2006
INTERIOR CAULKING,	BASEMENT MAIN MECHANICAL, CEILING PANEL INSULATION JOINTS	9/15/2009

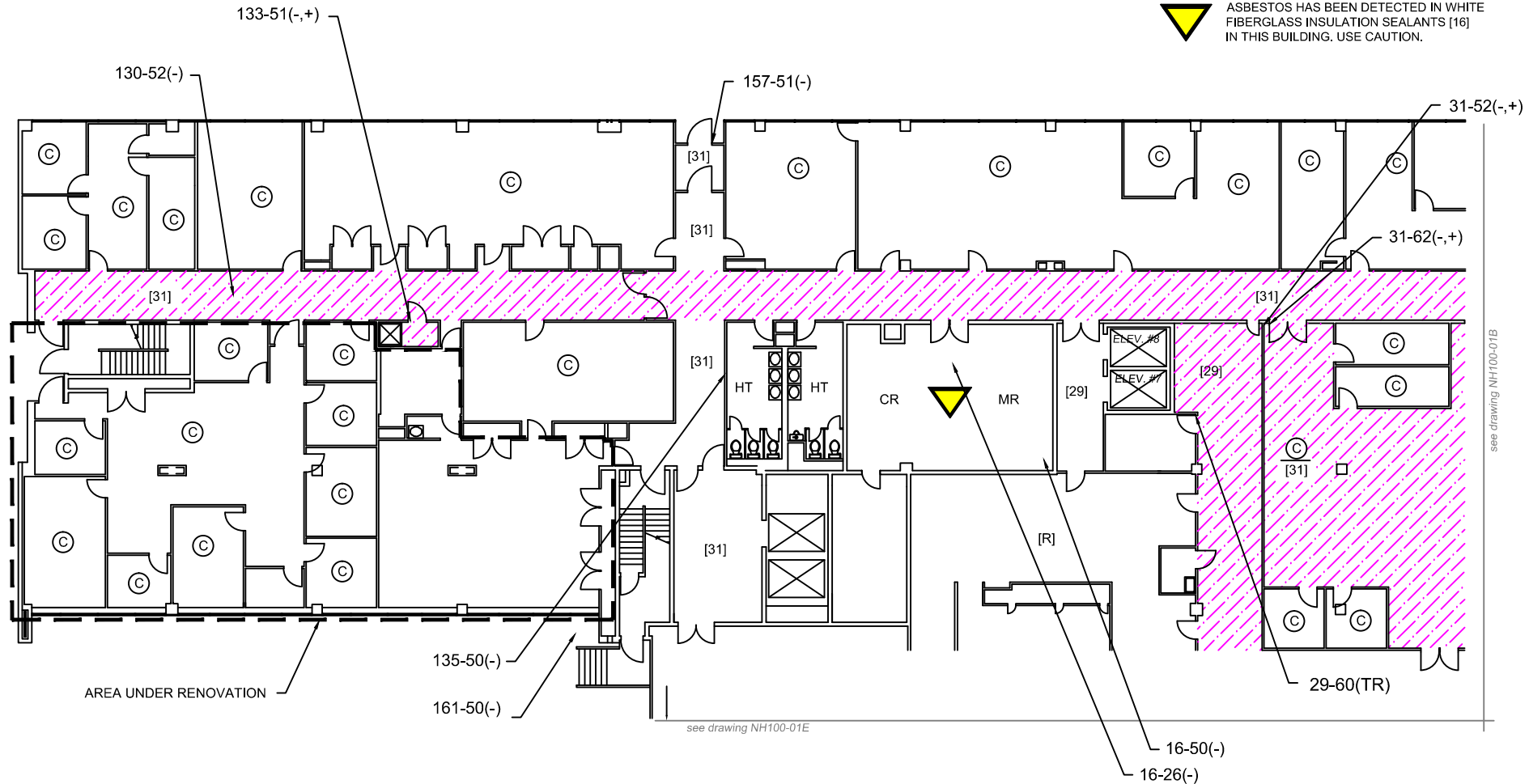
GASKET MATERIAL	BASEMENT MAIN MECHANICAL E005 AND TOOL ROOM E009; BOILER EQUIPMENT/ PIPING FLANGES	9/15/2009
ROPE PACKING MATERIAL	BASEMENT MAIN MECHANICAL TOOL ROOM E009; BOILER EQUIPMENT/ PIPING FLANGES	9/15/2009
GASKET MATERIAL	BASEMENT MAIN MECHANICAL TOOL ROOM E009; BOILER EQUIPMENT/ PIPING FLANGES	9/15/2009
GASKET MATERIAL	BASEMENT MAIN MECHANICAL TOOL ROOM E009; BOILER EQUIPMENT/ PIPING FLANGES	9/15/2009
ROPE PACKING MATERIAL	BASEMENT MAIN MECHANICAL TOOL ROOM E009; BOILER EQUIPMENT/ PIPING FLANGES	9/15/2009
ROOFING MATERIAL,	EXTERIOR GROUND DEBRIS, NORTHSIDE A, B, C SECTIONS	9/15/2009
EXTERIOR CAULKING,	EXTERIOR GROUND DEBRIS, SOUTHSIDE A SECTION, WESTSIDE E SECTION, SOURCE UNKNOWN	9/15/2009
INSULATION	E AND H SECTIONS, CRAWLSPACE LOOSE FILL	9/15/2009
MISCELLANEOUS SEALANT	THROUGHOUT BUILDING AT CABLE, CONDUIT, AND PIPE PENETRATIONS THROUGH FIREWALL	9/15/2009
FOIL BACKED TAPE	ROOF FLASHING SEAMS AT UNIT BASES	9/15/2009
VINYL THRESHOLD MATERIAL	G SECTION, E156	9/15/2009
SPRAY-APPLIED	STRUCTURAL BEAM FIRE COATING (NEWER), BASEMENT AND FIRST FLOOR AREAS EXPOSED, PRESUMED WITHIN WALLS	8/12/2014
12" WHITE FLOOR TILE AND ADHESIVE	FIRST FLOOR C AREA (NEW PHARMACY)	8/12/2014
INSULATION	E AND H SECTIONS, CRAWLSPACE LOOSE FILL	9/15/2009
FLOOR TILE	OVER HM154, G SECTION E148	9/15/2009
EXTERIOR CAULKING,	DOORS	9/15/2009
EXTERIOR CAULKING,	WINDOWS, DOORS	9/15/2009
DRYWALL AND JOINT MATERIAL	THROUGHOUT BUILDING EXCEPT MECHANICAL ROOMS AND STAIRWELLS	10/6/2006
SINK UNDERCOATING,	H SECTION; S102	9/17/2002
TEXTURED CEILING MATERIAL	C266, C267, C268, VARIOUS LOCATIONS THROUGHOUT SECOND FLOOR OF NORTH WING, VARIOUS LOCATIONS THROUGHOUT THIRD AND FOURTH FLOORS EXCEPT CORRIDORS	9/15/2009
TANK INSULATION	B001/ BASEMENT MECHANICAL DEARATOR, w/LAGGING,	9/15/2009
SINK UNDERCOATING,	H SECTION; S102	10/6/2006

CLOTH LAGGING MATERIAL	MECHANICAL ROOMS THROUGHOUT AT CAPPINGS AND FITTINGS	11/7/2002
CAPPING INSULATION ON	MECHANICAL ROOMS THROUGHOUT (SEE ALSO HM16 ON STEAM LINES)	9/17/2002
CLOTH LAGGING MATERIAL	MECHANICAL ROOMS THROUGHOUT AT CAPPINGS AND FITTINGS;	9/17/2002
BUILT-UP ROOFING	ROOFING SYSTEM THROUGHOUT	9/17/2009
12" ACOUSTICAL TILE	C100, C100A, C100B, C103, C106, C107, C107A, C107B, C107C, C121, C122, C123, N137, N137A, N137B, N138, N139, N140, N141, N142, N143, N143A, N144, N144A, N144B, N144D, N144E, N145, N145A, N146, N146A, S100, S100A, S100B, S101A, S103A, S119, S120E, S120F, S	9/15/2009
FIBERGLASS INSULATION SEALANT	AT CAPPINGS AND FITTINGS IN MECHANICAL ROOMS (SEE ALSO HM16)	9/17/2002
SINK UNDERCOATING,	H SECTION S102; G SECTION WEST	9/15/2009
DRYWALL AND JOINT MATERIAL	THROUGHOUT STAIRWELLS, VARIOUS RESTROOMS THROUGHOUT, VARIOUS OTHER CLEAN WORK AND KITCHEN AREAS THROUGHOUT BUILDING	9/15/2009
12" ORANGE FLOOR TILE AND ADHESIVE	COMMON TILE IN BASEMENT AND FIRST FLOOR A	10/6/2006
12" ORANGE FLOOR TILE AND ADHESIVE	COMMON TILE IN BASEMENT AND FIRST FLOOR A	9/17/2002
PIPE INSULATION	B001/ BASEMENT MECHANICAL STEAM LINE; BASEMENT A MECHANICAL ROOM #24/ M012; MIXED OTHER MECHANICAL SPACES	9/15/2009
ROPE PACKING MATERIAL	BASEMENT MAIN MECHANICAL TOOL ROOM E009; BOILER EQUIPMENT/ PIPING FLANGES	8/12/2014
BOILER FLUE INSULATION,	B001/ BASEMENT MECHANICAL	8/12/2014

CAUTION



ASBESTOS HAS BEEN DETECTED IN WHITE FIBERGLASS INSULATION SEALANTS [16] IN THIS BUILDING. USE CAUTION.



see drawing NH100-01E

see drawing NH100-01B

- © CARPET
- CR CONCRETE
- [HM] HOMOGENOUS MATERIAL NUMBER

SAMPLE LEGEND ID.

01-01 (+,-)

— SAMPLE IDENTIFICATION

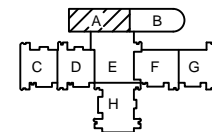
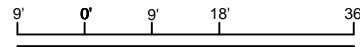
— POSITIVE (+) OR NEGATIVE (-) FOR THE PRESENCE OF ASBESTOS.

TR - TRACE

— HOMOGENOUS MATERIAL

NAX - NOT ACCESSIBLE (AREA)

**BUILDING NH100
FIRST FLOOR A**



ACM LEGEND

12" ORANGE FLOOR TILE ADHESIVE [HM31]

12" OLIVE FLOOR TILE ADHESIVE [HM133]

REVISIONS	
NO.	DESCRIPTION

AH
Air Environmental Consultants

MCB CAMP LEJEUNE, NC

CY2014 ASBESTOS INSPECTION
NH100-01A
MCB CAMP LEJEUNE, NC

CHECKED BY: DO
DRAWN BY: JED
SCALE: GRAPHIC
DATE: DECEMBER 2014
SHEET: 1 OF 2

CAUTION

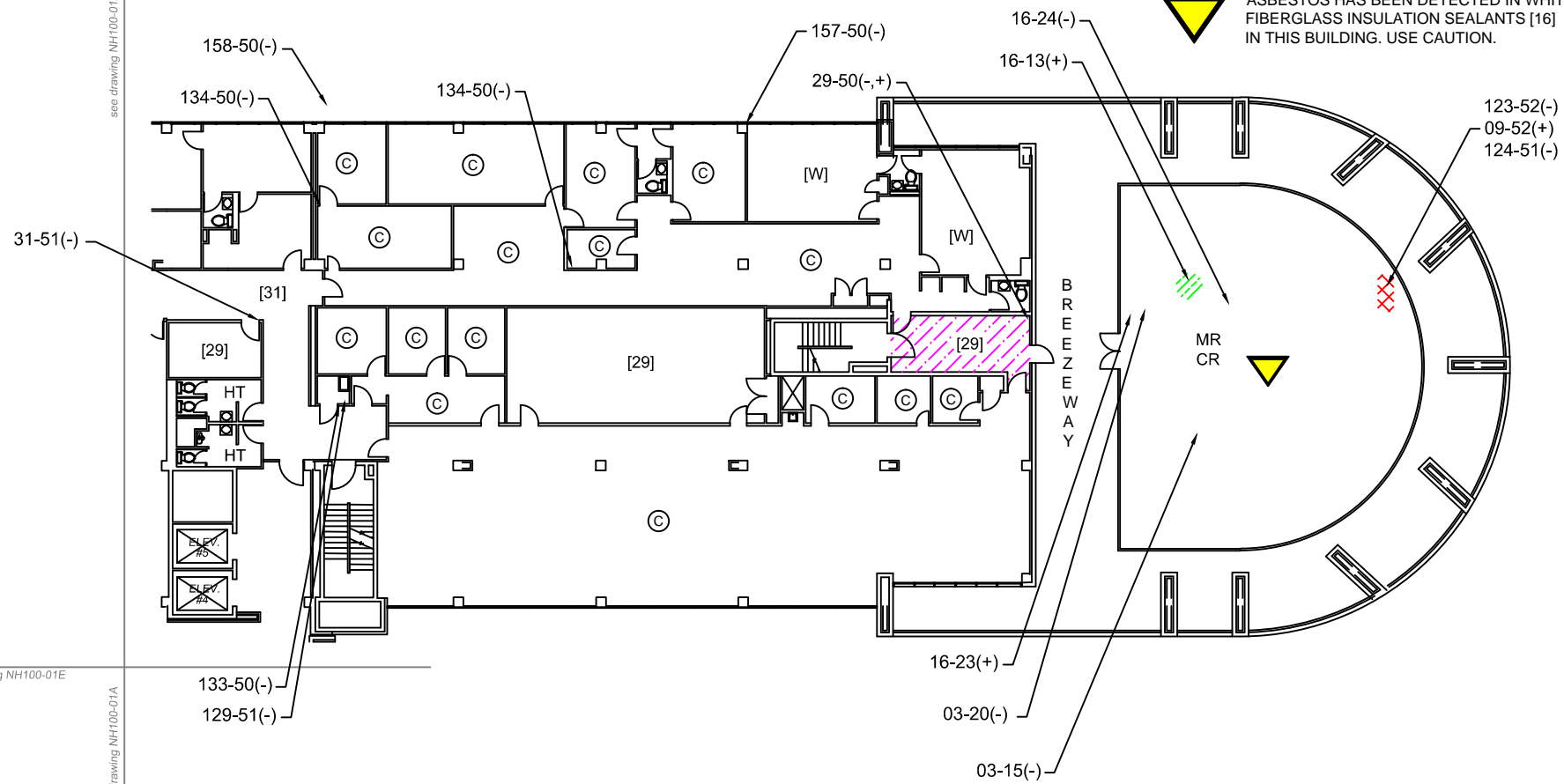


ASBESTOS HAS BEEN DETECTED IN WHITE FIBERGLASS INSULATION SEALANTS [16] IN THIS BUILDING. USE CAUTION.

see drawing NH100-01A

see drawing NH100-01A

see drawing NH100-01E



- © CARPET
- CR CONCRETE
- [HM] HOMOGENOUS MATERIAL NUMBER
- [W] WOOD FLOOR

SAMPLE LEGEND ID

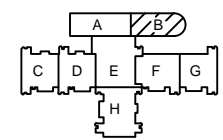
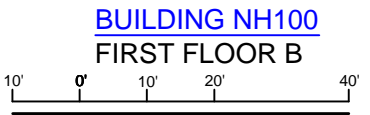
01-01 (+/-)

POSITIVE (+) OR NEGATIVE (-) FOR THE PRESENCE OF ASBESTOS.

TR - TRACE

HOMOGENOUS MATERIAL

NAX - NOT ACCESSIBLE (AREA)



ACM LEGEND

- PIPE INSULATION LAGGING ON FIBERGLASS [HM09]
- FIBERGLASS INSULATION SEALANT, WHITE [HM16]
- 12" GRAY W/ GRAY FLOOR TILE ADHESIVE [HM29]

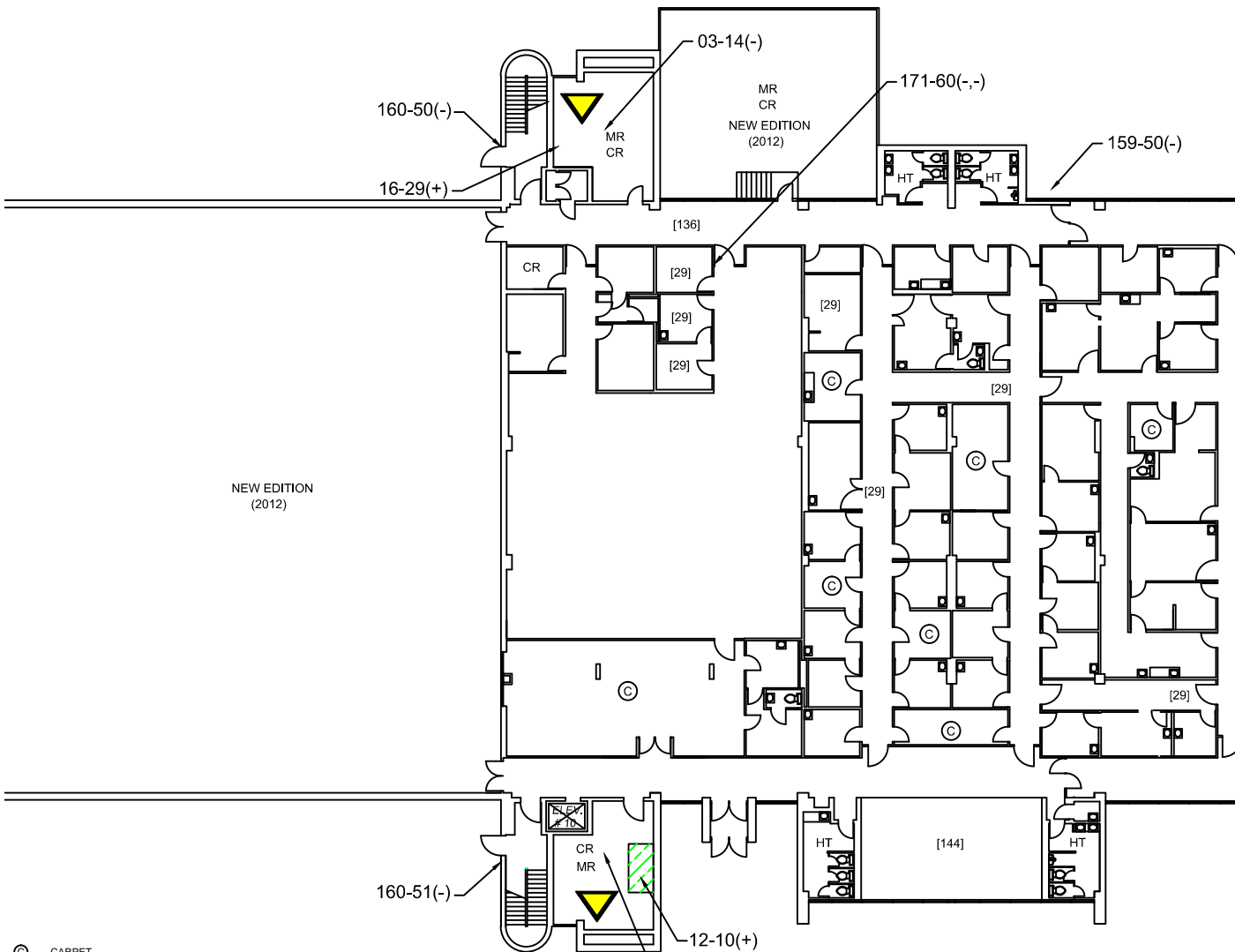
REVISIONS	
NO.	DESCRIPTION

AIH
AI Environmental Consultants

MCB CAMP LEJEUNE, NC

CY2014 ASBESTOS INSPECTION
NH100-01B
MCB CAMP LEJEUNE, NC

CHECKED BY: DO
DESIGNED BY: WED
SCALE: GRAPHIC
DATE: DECEMBER 2014
SHEET: 1 OF 2

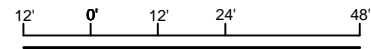


© CARPET
 CR CONCRETE
 MR MECHANICAL ROOM
 [HM] HOMOGENOUS MATERIAL NUMBER
 HT HARD TILE

SAMPLE LEGEND ID.

01-01 (+,-)
 SAMPLE IDENTIFICATION
 POSITIVE (+) OR NEGATIVE (-) FOR THE PRESENCE OF ASBESTOS.
 TR - TRACE
 HOMOGENOUS MATERIAL
 NAX - NOT ACCESSIBLE (AREA)

**BUILDING NH100
FIRST FLOOR C**



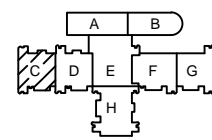
see drawing NH100-01D

see drawing NH100-01D

CAUTION



ASBESTOS HAS BEEN DETECTED IN WHITE FIBERGLASS INSULATION SEALANTS [16] IN THIS BUILDING. USE CAUTION.



ACM LEGEND

MASTIC ON DUCT, WHITE [HM12]
 12" GRAY WITH FLOOR TILE ADHESIVE [HM29]

REVISIONS			
NO.	DESCRIPTION	DATE	APPROVED

AH
Air Environmental Consultants

MCB CAMP LEJEUNE, NC

CY2014 ASBESTOS INSPECTION
NH100-01C
MCB CAMP LEJEUNE, NC

CHECKED BY: DO
 DRAWN BY: JMC
 SCALE: GRAPHIC
 DATE: DECEMBER 2014
 SHEET: 1 OF 2

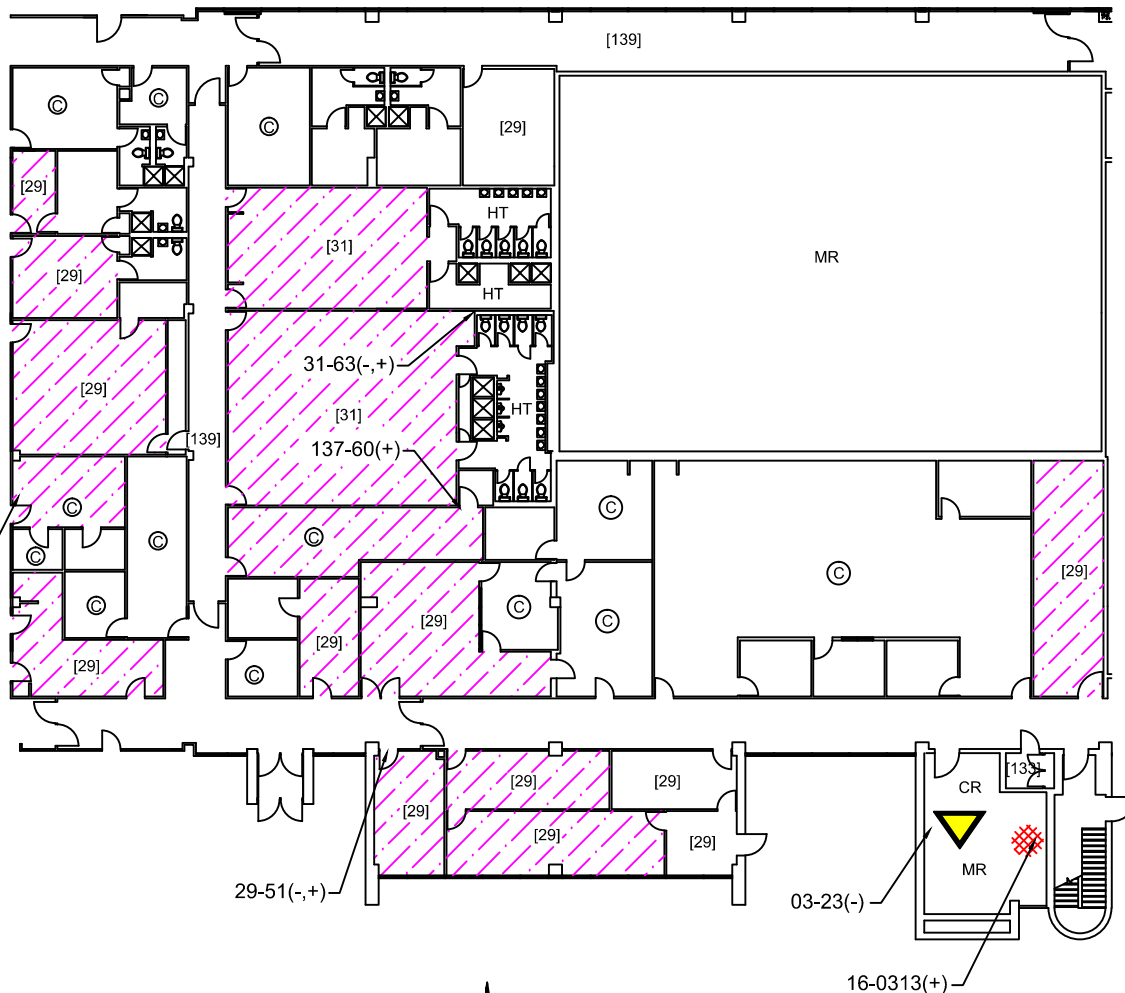
see drawing NH100-01A



 12" GRAY WITH FLOOR TILE ADHESIVE [HM29]

see drawing NH100-01E

see drawing NH100-01E



- © CARPET
- CR CONCRETE
- MR MECHANICAL ROOM
- [HM] HOMOGENOUS MATERIAL NUMBER
- HT HARD TILE

SAMPLE LEGEND ID.

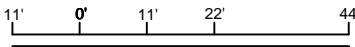
01-01 (+,-)

POSITIVE (+) OR NEGATIVE (-) FOR THE PRESENCE OF ASBESTOS.

TR - TRACE

HOMOGENOUS MATERIAL

NAX - NOT ACCESSIBLE (AREA)



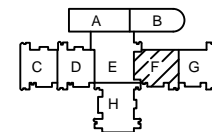
**BUILDING NH100
FIRST FLOOR F**

see drawing NH100-01G



ASBESTOS HAS BEEN DETECTED IN WHITE FIBERGLASS INSULATION SEALANTS [16] IN THIS BUILDING. USE CAUTION.

see drawing NH100-01G



ACM LEGEND

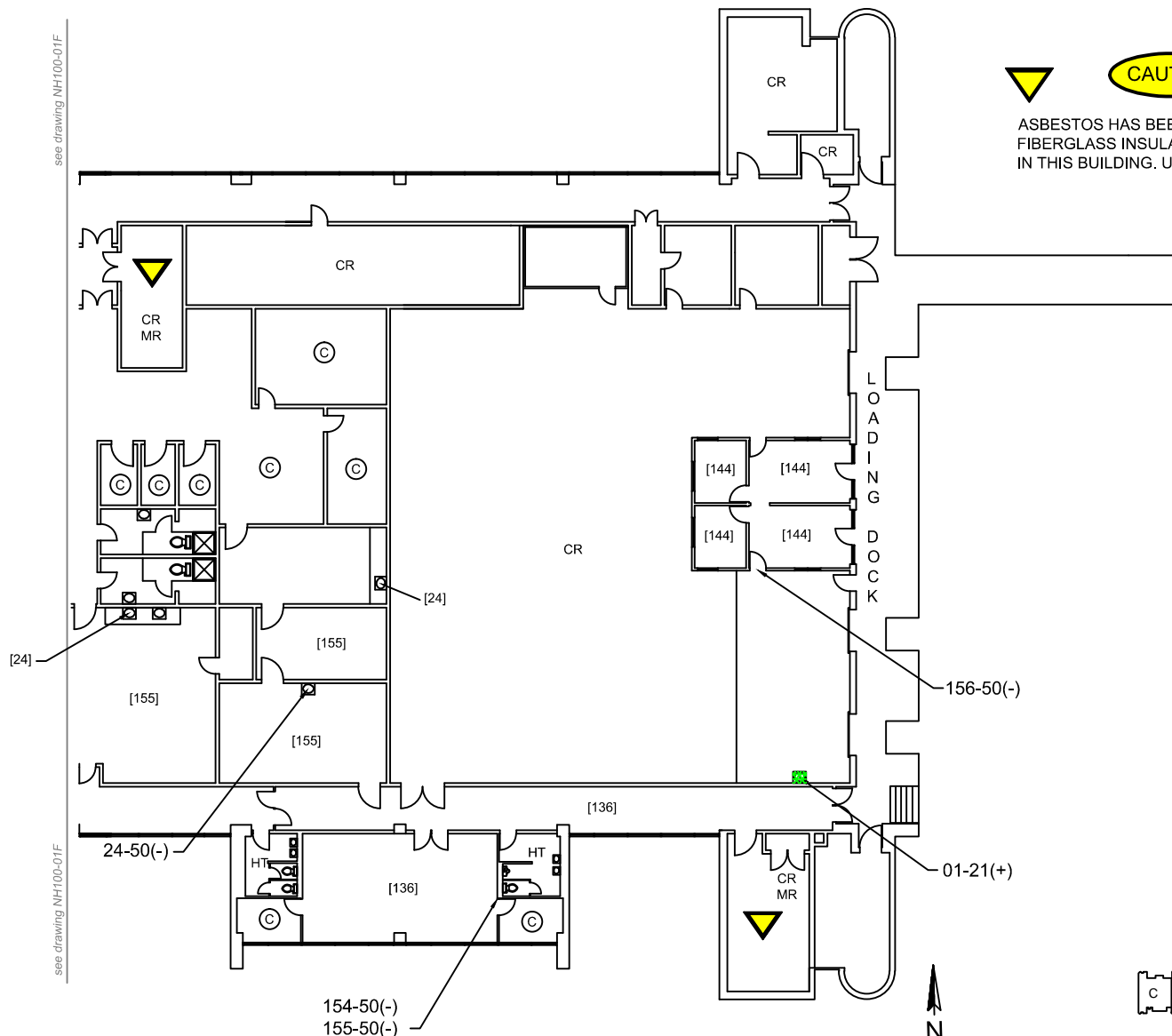
- FIBERGLASS INSULATION SEALANT [HM16]
- 12" GRAY FLOOR TILE ADHESIVE [HM29]
- 12" ORANGE WITH WHITE FLOOR TILE ADHESIVE [HM29]
- RESIDUAL MASTIC [HM29]

REVISIONS			
NO.	DESCRIPTION	DATE	APPROVED

MCB CAMP LEJEUNE, NC

CY2014 ASBESTOS INSPECTION
NH100-01F
MCB CAMP LEJEUNE, NC

CHECKED BY: DO
DRAWN BY: JMD
SCALE: GRAPHIC
DATE: DECEMBER 2014
SHEET: 1 OF 2



ASBESTOS HAS BEEN DETECTED IN WHITE FIBERGLASS INSULATION SEALANTS [16] IN THIS BUILDING. USE CAUTION.

- © CARPET
- CR CONCRETE
- MR MECHANICAL ROOM
- [HM] HOMOGENOUS MATERIAL NUMBER
- HT HARD TILE

SAMPLE LEGEND ID.

01-01 (+, -)

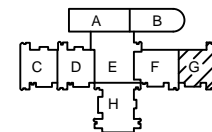
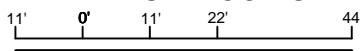
POSITIVE (+) OR NEGATIVE (-) FOR THE PRESENCE OF ASBESTOS.

TR - TRACE

HOMOGENOUS MATERIAL

NAX - NOT ACCESSIBLE (AREA)

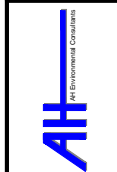
BUILDING NH100 FIRST FLOOR G



ACM LEGEND

SINK UNDER COATING, PINK [HM25]

NO.	DESCRIPTION	DATE	APPROVED



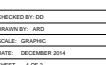
MCB CAMP LEJEUNE, NC



CY2014 ASBESTOS INSPECTION
NH100-01G
MCB CAMP LEJEUNE, NC

CHECKED BY: DO
DRAWN BY: JMC
SCALE: GRAPHIC
DATE: DECEMBER 2014
SHEET: 1 OF 2

see drawing NH100-01E



© CARPET
 CR CONCRETE
 HT HARD TILE
 [W] WOOD FLOOR

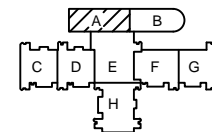
SAMPLE LEGEND ID.

01-01 (+/-)
 SAMPLE IDENTIFICATION
 POSITIVE (+) OR NEGATIVE (-) FOR THE PRESENCE OF ASBESTOS.
 TR - TRACE
 HOMOGENOUS MATERIAL
 NAX - NOT ACCESSIBLE (AREA)

NO ACM IDENTIFIED

**BUILDING NH100
SECOND FLOOR A**

9' 0' 9' 18' 36'



see drawing NH100-02E

see drawing NH100-02B

see drawing NH100-02B

CHECKED BY: DO
 DRAWN BY: JMD
 SCALE: GRAPHIC
 DATE: DECEMBER 2014
 SHEET: 1 OF 2

CY2014 ASBESTOS INSPECTION
 NH100-02A
 MCB CAMP LEJEUNE, NC



MCB CAMP LEJEUNE, NC



REVISIONS

NO.	DESCRIPTION	DATE	APPROVED

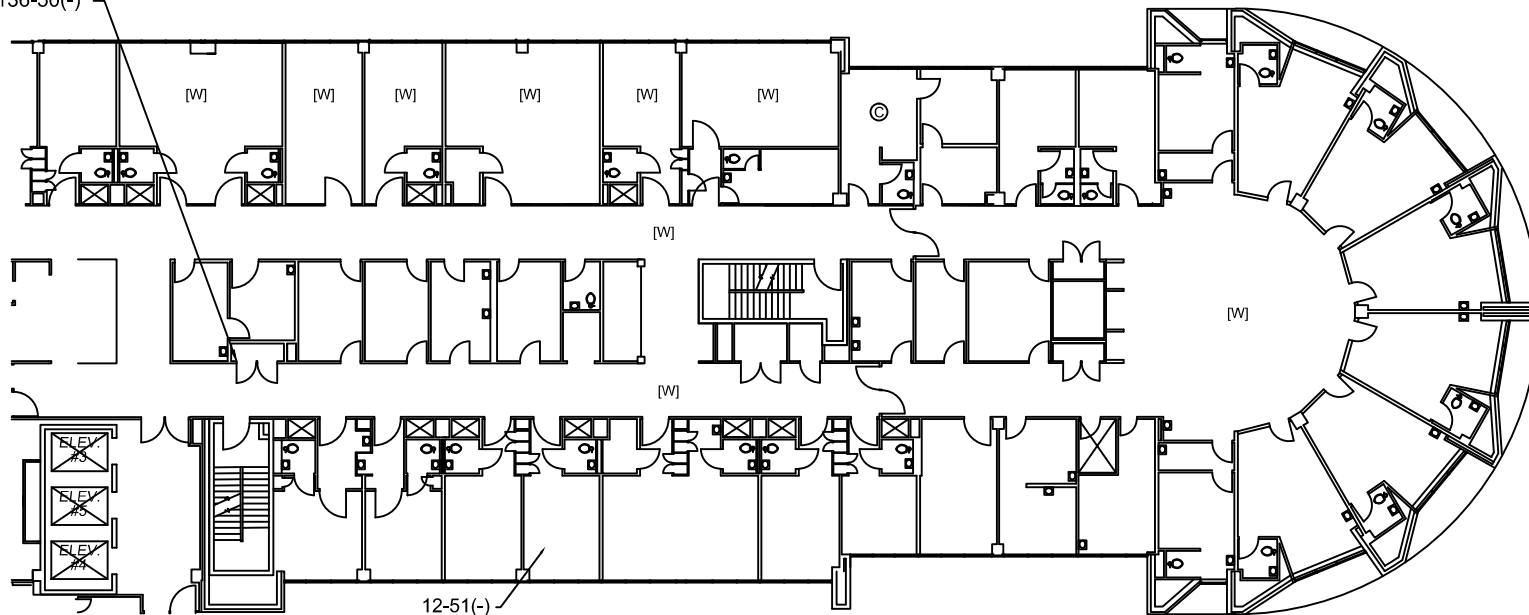
see drawing NH100-02A

see drawing NH100-02A

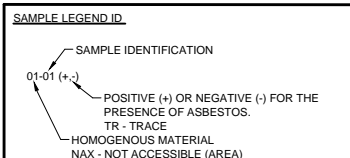
see drawing NH100-02E

136-50(-)

12-51(-)

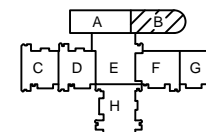
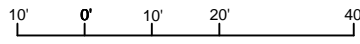


- © CARPET
[HM] HOMOGENOUS MATERIAL NUMBER
[W] WOOD FLOOR



NO ACM IDENTIFIED

BUILDING NH100
SECOND FLOOR B



CY2014 ASBESTOS INSPECTION
NH100-02B
MCB CAMP LEJEUNE, NC

CHECKED BY: DO
DRAWN BY: JMD
SCALE: GRAPHIC
DATE: DECEMBER 2014
SHEET: 1 OF 2



MCB CAMP LEJEUNE, NC



NO.	DESCRIPTION	DATE	APPROVED

REVISIONS

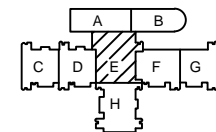
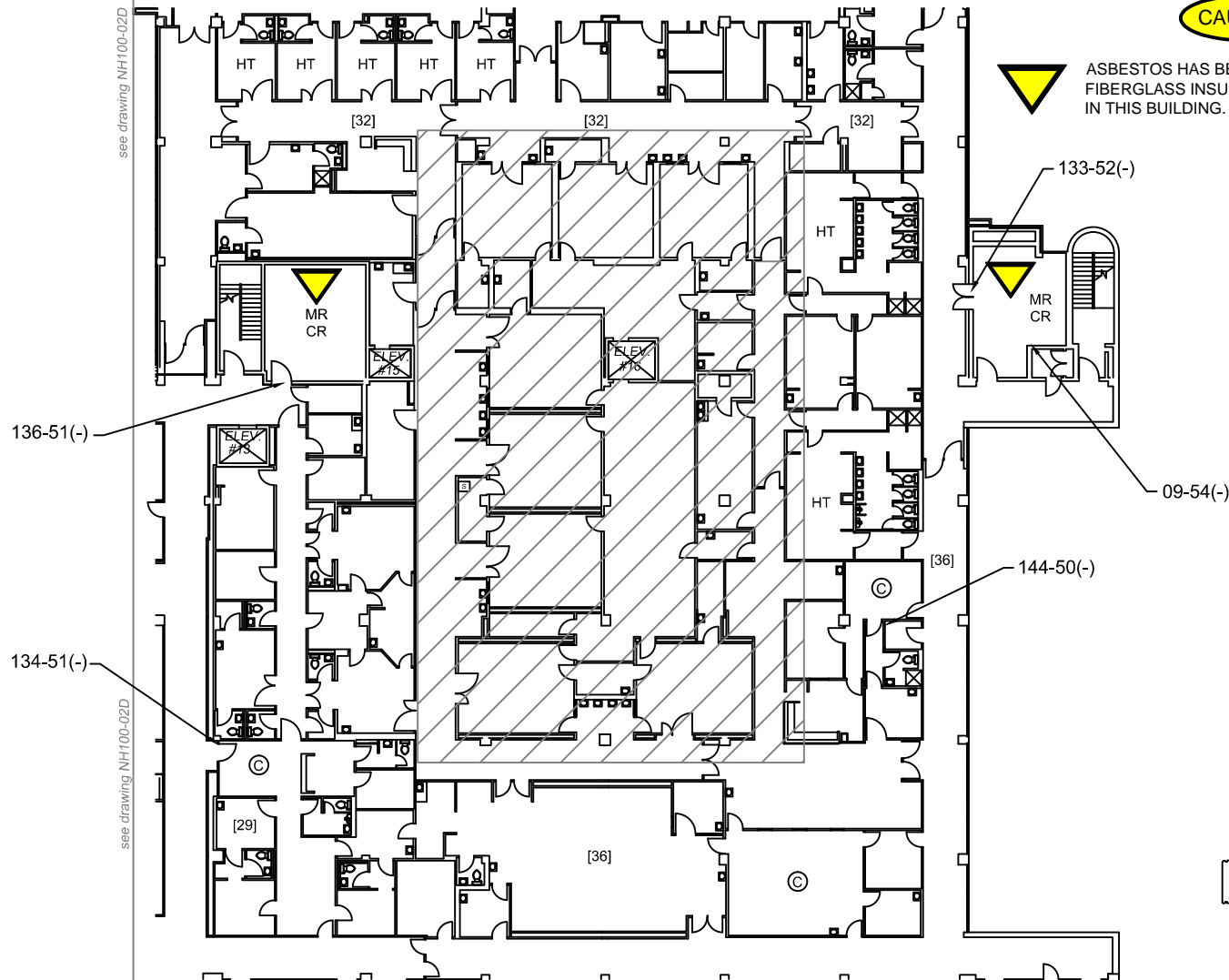
see drawing NH100-02A

see drawing NH100-02A

CAUTION



ASBESTOS HAS BEEN DETECTED IN WHITE FIBERGLASS INSULATION SEALANTS [16] IN THIS BUILDING. USE CAUTION.



- © CARPET
- CR CONCRETE
- [HM] HOMOGENOUS MATERIAL NUMBER
- MR MECHANICAL ROOM

see drawing NH100-02H

see drawing NH100-02H

SAMPLE LEGEND ID.

01-01 (+/-)

POSITIVE (+) OR NEGATIVE (-) FOR THE PRESENCE OF ASBESTOS.

TR - TRACE

HOMOGENOUS MATERIAL

NAX - NOT ACCESSIBLE (AREA)

**BUILDING NH100
SECOND FLOOR E**



STERILE AREA NOT ACCESSIBLE FOR INSPECTION

REVISIONS			
NO.	DESCRIPTION	DATE	APPROVED

MCB CAMP LEJEUNE, NC

CY2014 ASBESTOS INSPECTION
NH100-02E
MCB CAMP LEJEUNE, NC

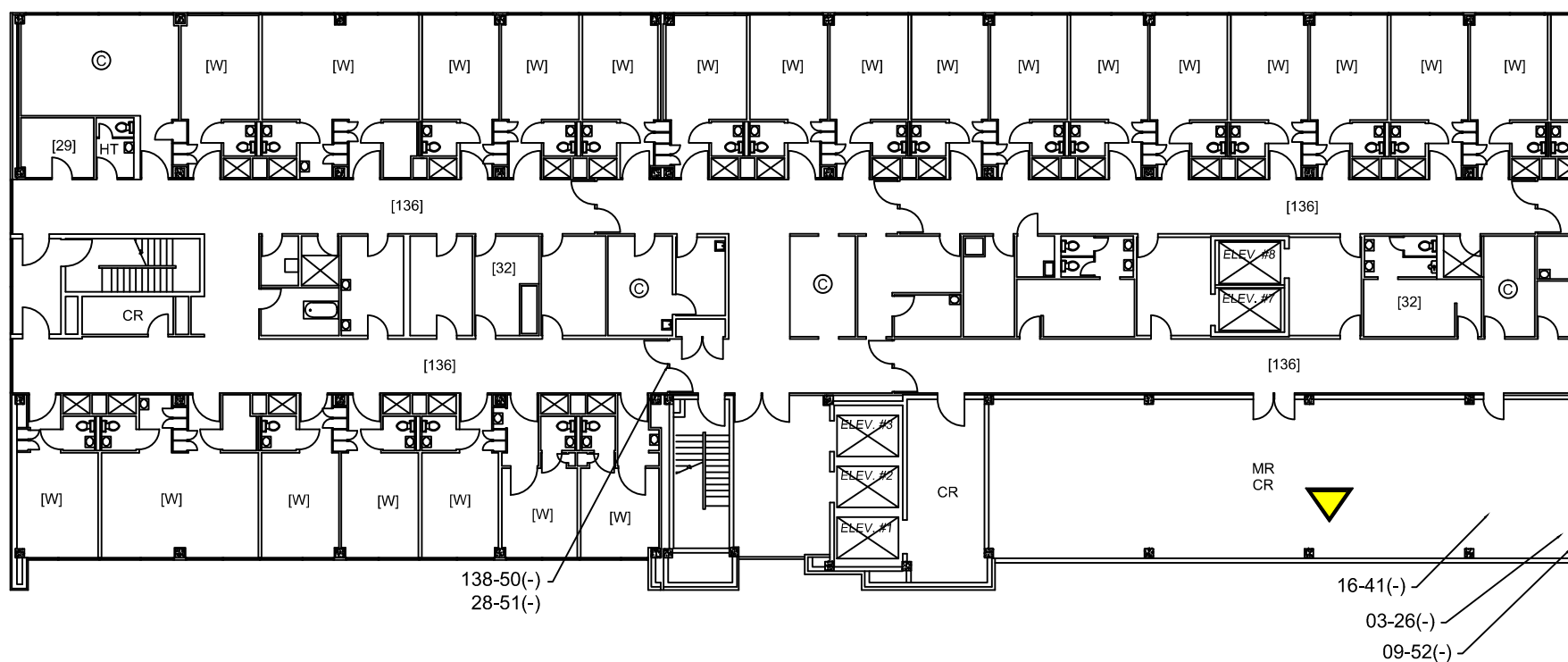
CHECKED BY: DO
DRAWN BY: JMD
SCALE: GRAPHIC
DATE: DECEMBER 2014
SHEET: 1 OF 2

CHECKED BY: DO
DRAWN BY: ARD
SCALE: GRAPHIC
DATE: DECEMBER 2014
SHEET 1 OF 2

CAUTION



ASBESTOS HAS BEEN DETECTED IN WHITE
FIBERGLASS INSULATION SEALANTS [16]
IN THIS BUILDING. USE CAUTION.




see drawing NH100-03B

see drawing NH100-03B

CY2014 ASBESTOS INSPECTION
NH100-03A
MCB CAMP LEJEUNE, NC

CHECKED BY: DO
DRAWN BY: ARD
SCALE: GRAPHIC
DATE: DECEMBER 2014
SHEET 1 OF 2



AET
Environmental Consultants

MCB CAMP LEJEUNE, NC



DESCRIPTION	REVISIONS
-------------	-----------

[illegible]

© CARPET
 CR CONCRETE
 MR MECHANICAL ROOM
 [HM] HOMOGENOUS MATERIAL NUMBER
 HT HARD TILE

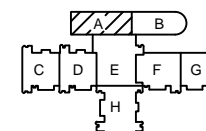
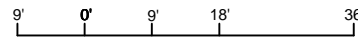
SAMPLE LEGEND ID

01-01 (+,-)

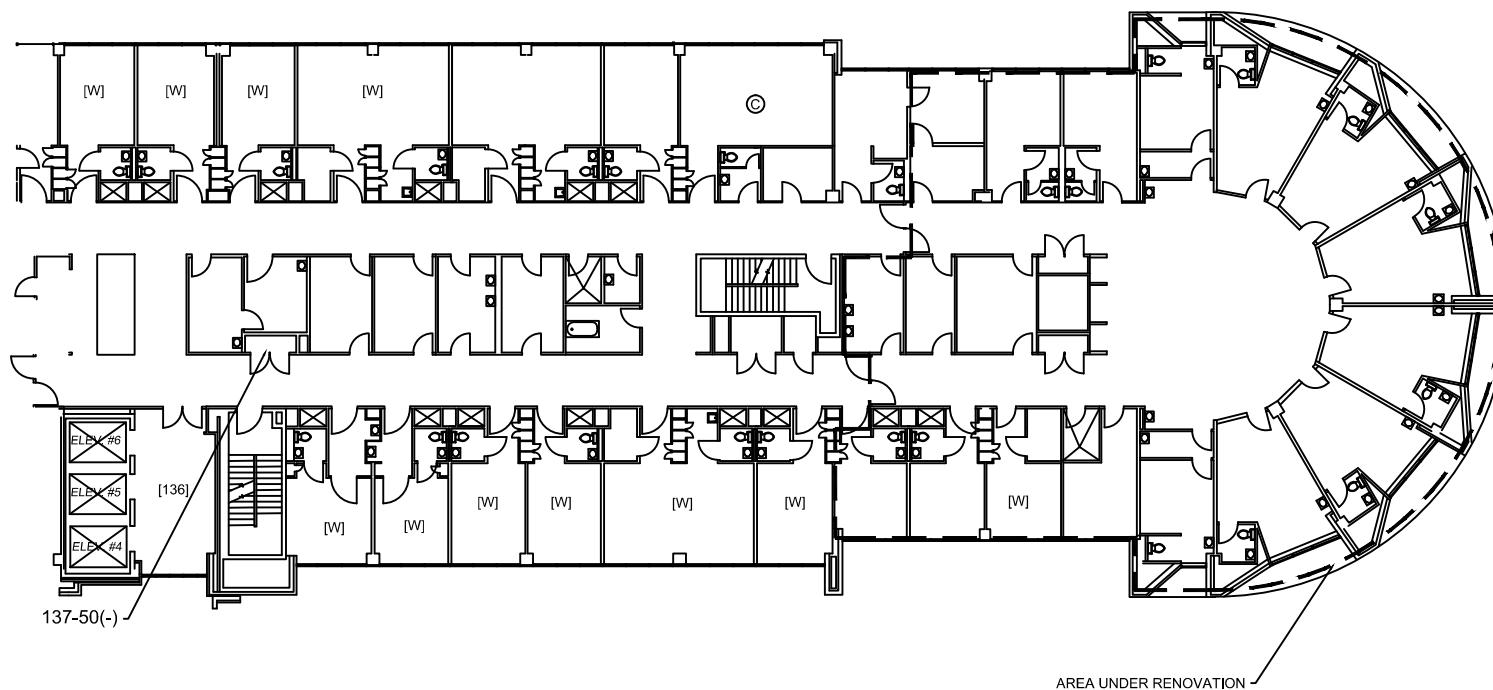
- SAMPLE IDENTIFICATION
- POSITIVE (+) OR NEGATIVE (-) FOR THE PRESENCE OF ASBESTOS.
- TR - TRACE
- HOMOGENOUS MATERIAL
- NAX - NOT ACCESSIBLE (AREA)

NO ACM IDENTIFIED

BUILDING NH100
THIRD FLOOR A



see drawing NH100-03A



© CARPET
[HM] HOMOGENOUS MATERIAL NUMBER
[W] WOOD FLOOR

SAMPLE LEGEND ID

SAMPLE LEGEND ID

```
graph TD; ID["01-01 (+,-)"] --> SI["SAMPLE IDENTIFICATION"]; ID --> PN["POSITIVE (+) OR NEGATIVE (-) FOR THE PRESENCE OF ASBESTOS."]; ID --> TR["TR - TRACE"]; ID --> HM["HOMOGENOUS MATERIAL"]; ID --> NAX["NAX - NOT ACCESSIBLE (AREA)"]
```

01-01 (+,-)

SAMPLE IDENTIFICATION

POSITIVE (+) OR NEGATIVE (-) FOR THE PRESENCE OF ASBESTOS.

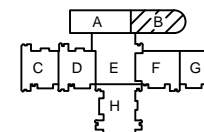
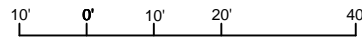
TR - TRACE

HOMOGENOUS MATERIAL

NAX - NOT ACCESSIBLE (AREA)

NO ACM IDENTIFIED

BUILDING NH100
THIRD FLOOR B



CY2014 ASBESTOS INSPECTION
NH100-03B
MCB CAMP LEJEUNE, NC

CHECKED BY: DO
DRAWN BY: ARD
SCALE: GRAPHIC
DATE: DECEMBER 2014
SHEET 1 OF 2



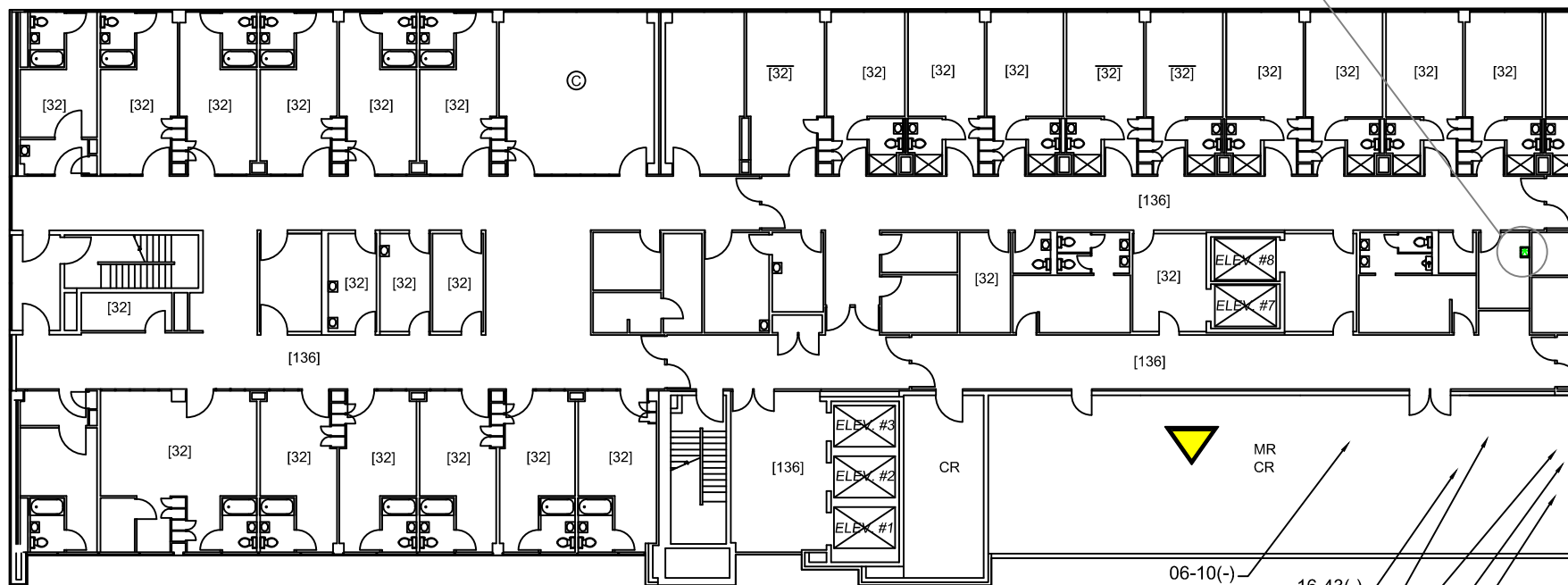
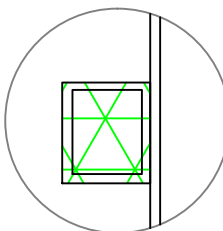
MCB CAMP LEJEUNE, NC

[illegible]

CAUTION



ASBESTOS HAS BEEN DETECTED IN WHITE FIBERGLASS INSULATION SEALANTS [16] IN THIS BUILDING. USE CAUTION.



© CARPET
[HM] HOMOGENOUS MATERIAL NUMBER
MR MECHANICAL ROOM

SAMPLE LEGEND ID.

01-01 (+/-)
SAMPLE IDENTIFICATION
POSITIVE (+) OR NEGATIVE (-) FOR THE PRESENCE OF ASBESTOS.
TR - TRACE
HOMOGENOUS MATERIAL
NAX - NOT ACCESSIBLE (AREA)

NO ACM IDENTIFIED
BUILDING NH100
FOURTH FLOOR A

9' 0' 9' 18' 36'



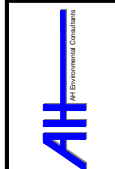
ACM LEGEND

SINK UNDER COATING, PINK [HM25]

see drawing NH100-04B

see drawing NH100-04B

NO.	DESCRIPTION	DATE	APPROVED
1	ISSUED FOR PERMIT	12/15/14	APPROVED
2	REVISION		
3	REVISION		
4	REVISION		
5	REVISION		
6	REVISION		
7	REVISION		
8	REVISION		
9	REVISION		
10	REVISION		



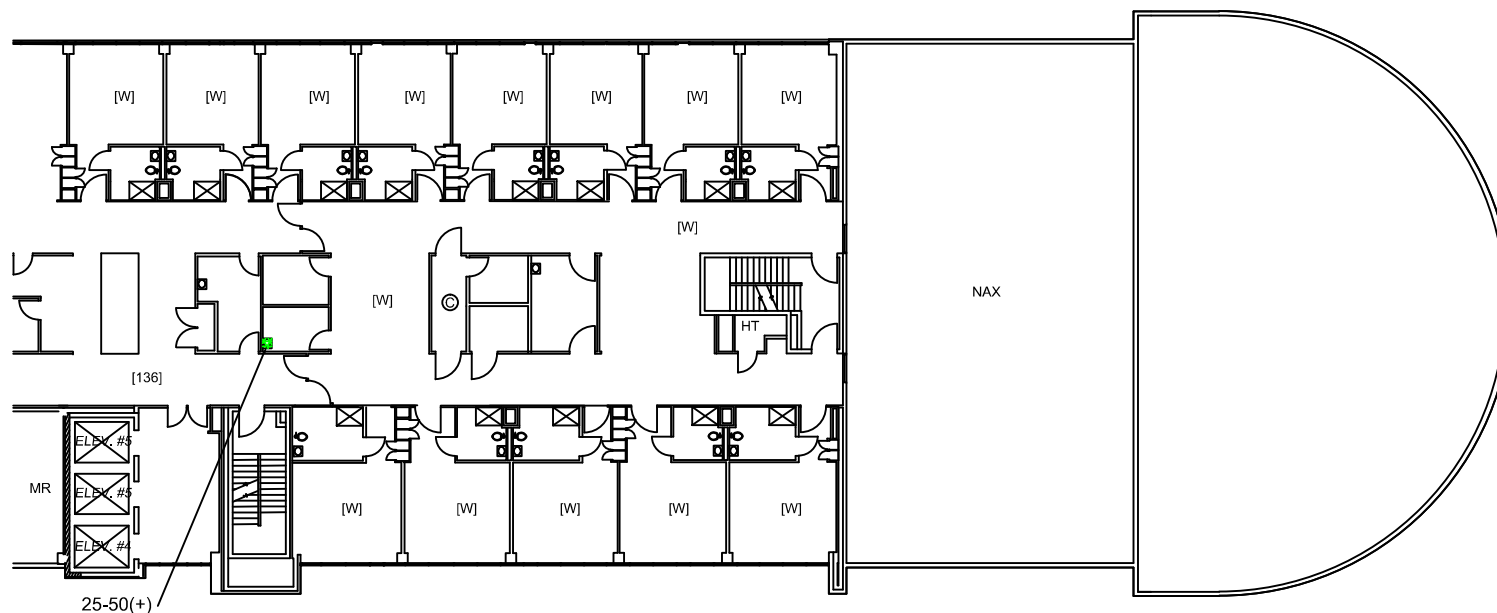
MCB CAMP LEJEUNE, NC



CY2014 ASBESTOS INSPECTION
NH100-04A
MCB CAMP LEJEUNE, NC

CHECKED BY: DO
DRAWN BY: JED
SCALE: GRAPHIC
DATE: DECEMBER 2014
SHEET: 1 OF 2

see drawing NH100-04A



© CARPET
 [HM] HOMOGENOUS MATERIAL NUMBER
 MR MECHANICAL ROOM
 [W] WOOD FLOOR

SAMPLE LEGEND ID

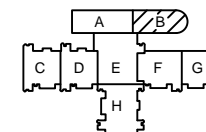
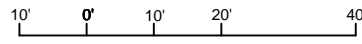
```
graph TD; ID["01-01 (+,-)"] --> SI["SAMPLE IDENTIFICATION"]; ID --> P["POSITIVE (+) OR NEGATIVE (-) FOR THE PRESENCE OF ASBESTOS."]; ID --> T["TR - TRACE"]; ID --> H["HOMOGENOUS MATERIAL"]; ID --> N["NAX - NOT ACCESSIBLE (AREA)"]
```

01-01 (+,-)

- SAMPLE IDENTIFICATION
- POSITIVE (+) OR NEGATIVE (-) FOR THE PRESENCE OF ASBESTOS.
- TR - TRACE
- HOMOGENOUS MATERIAL
- NAX - NOT ACCESSIBLE (AREA)

NO ACM IDENTIFIED

BUILDING NH100
FOURTH FLOOR B



CY2014 ASBESTOS INSPECTION
NH100-04B
MCB CAMP LEJEUNE, NC



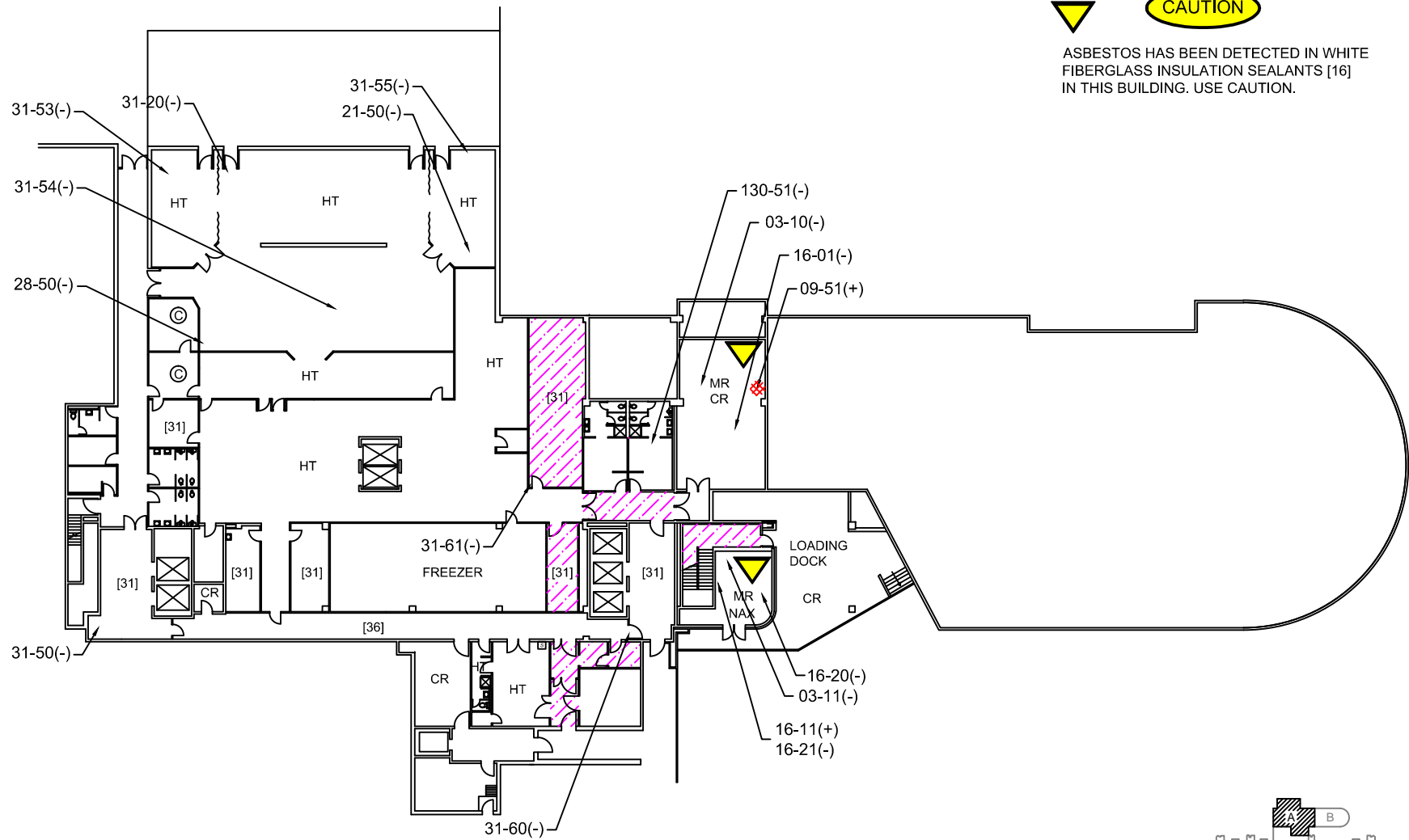
MCB CAMP LEJEUNE, NC

[illegible]



CAUTION

ASBESTOS HAS BEEN DETECTED IN WHITE FIBERGLASS INSULATION SEALANTS [16] IN THIS BUILDING. USE CAUTION.

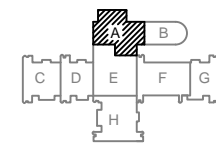
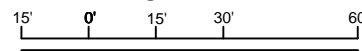


- © CARPET
- CR CONCRETE
- MR MECHANICAL ROOM
- [HM] HOMOGENOUS MATERIAL NUMBER
- HT HARD TILE

SAMPLE LEGEND ID.

- 01-01 (+/-) SAMPLE IDENTIFICATION
- POSITIVE (+) OR NEGATIVE (-) FOR THE PRESENCE OF ASBESTOS.
- TR - TRACE
- HOMOGENOUS MATERIAL
- NAX - NOT ACCESSIBLE (AREA)

BUILDING NH100
BASEMENT A



ACM LEGEND

- PIPE INSULATION WRAP ON FIBERGLASS [HM09]
- 12" GRAY AND 12" ORANGE FLOOR TILE MASTIC [HM29, 31]

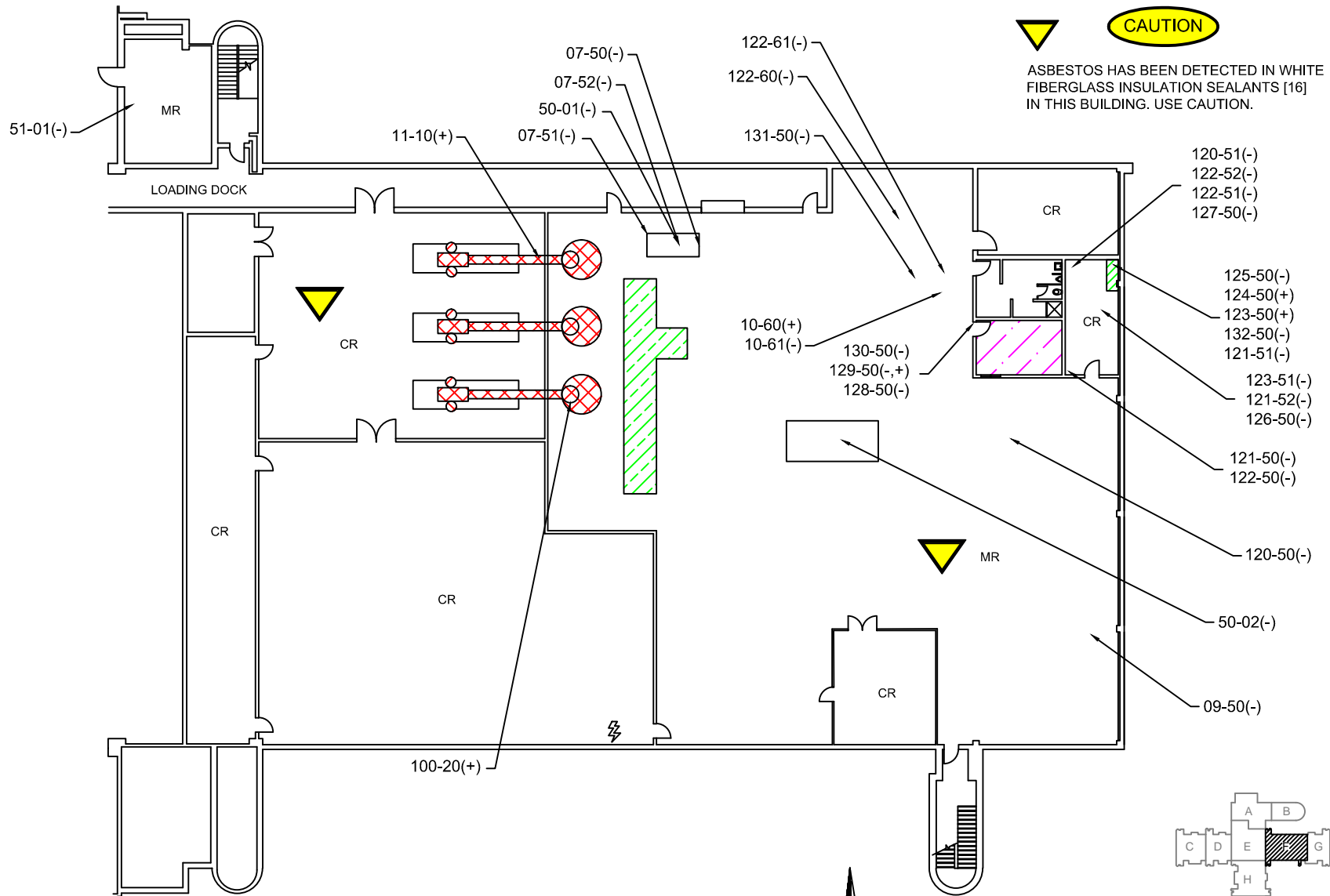
REVISIONS	DATE	DESCRIPTION	BY	APPROVED



MCB CAMP LEJEUNE, NC



CY2014 ASBESTOS INSPECTION
NH100-BA
MCB CAMP LEJEUNE, NC



CAUTION

ASBESTOS HAS BEEN DETECTED IN WHITE FIBERGLASS INSULATION SEALANTS [16] IN THIS BUILDING. USE CAUTION.

SAMPLE LEGEND ID.

01-01 (+/-)

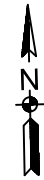
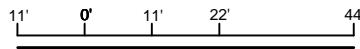
POSITIVE (+) OR NEGATIVE (-) FOR THE PRESENCE OF ASBESTOS.

TR - TRACE

HOMOGENOUS MATERIAL

NAX - NOT ACCESSIBLE (AREA)

BUILDING NH100 BASEMENT F



ACM LEGEND

CLOTH LAGGING MATERIAL [HM11]

TAN MASTIC ON METAL DUCT [HM12]

GASKET MATERIAL, BLACK [HM123], WHITE [HM124]

12" BEIGE FLOOR TILE ADHESIVE [HM129]

REVISIONS			
NO.	DESCRIPTION	DATE	APPROVED

MCB CAMP LEJEUNE, NC

**CY2014 ASBESTOS INSPECTION
NH100-BF
MCB CAMP LEJEUNE, NC**

CHECKED BY: DO
DRAWN BY: JMC
SCALE: GRAPHIC
DATE: DECEMBER 2014
SHEET: 1 OF 2

SAMPLE LEGEND ID.

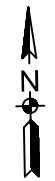
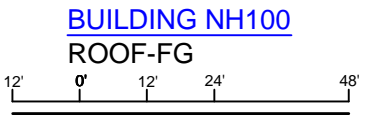
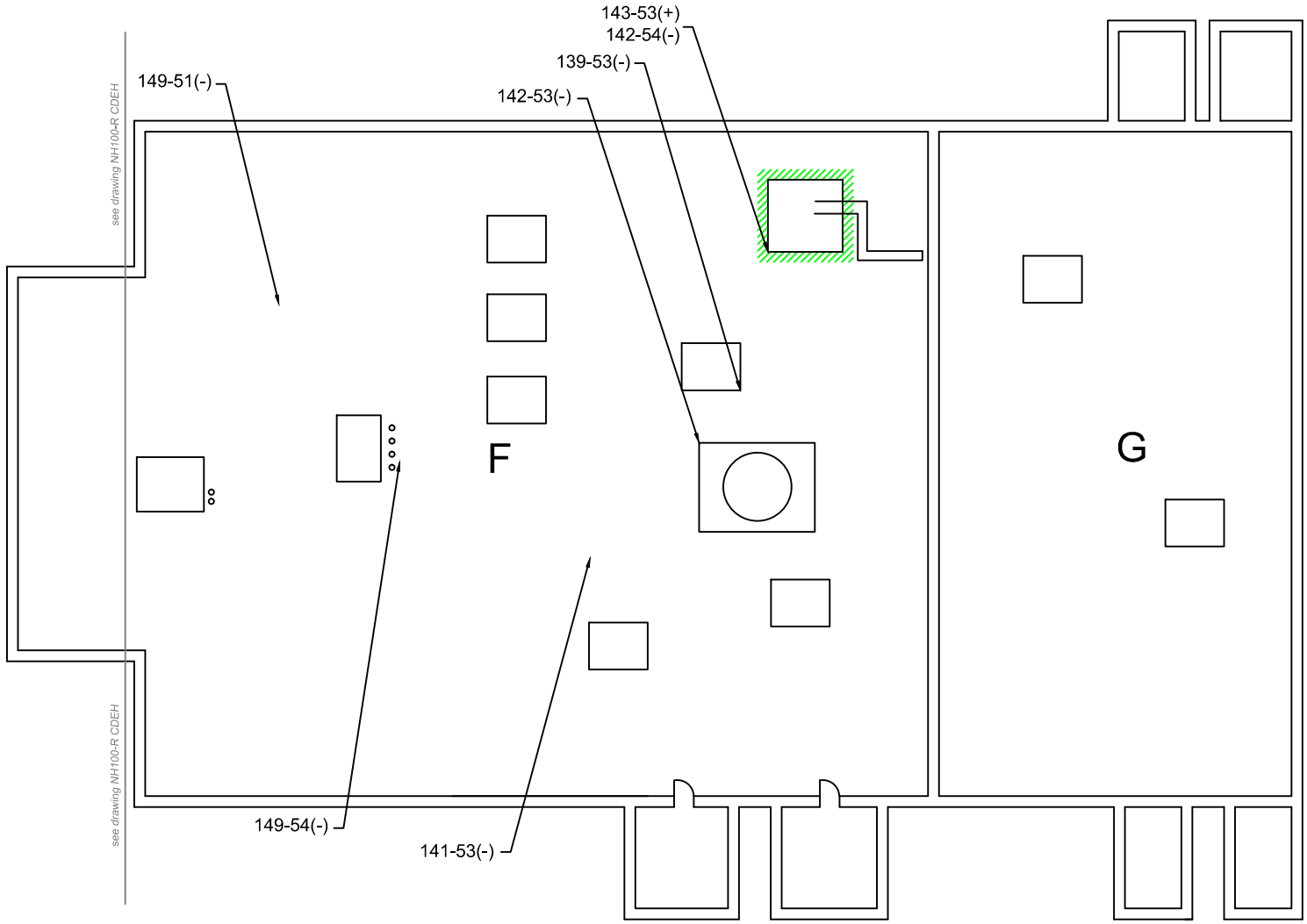
01-01 (+,-)

POSITIVE (+) OR NEGATIVE (-) FOR THE PRESENCE OF ASBESTOS.

TR - TRACE

HOMOGENOUS MATERIAL

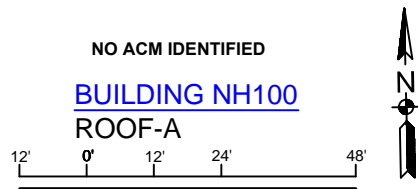
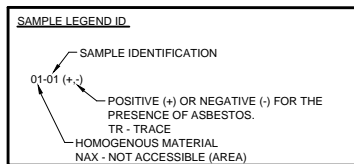
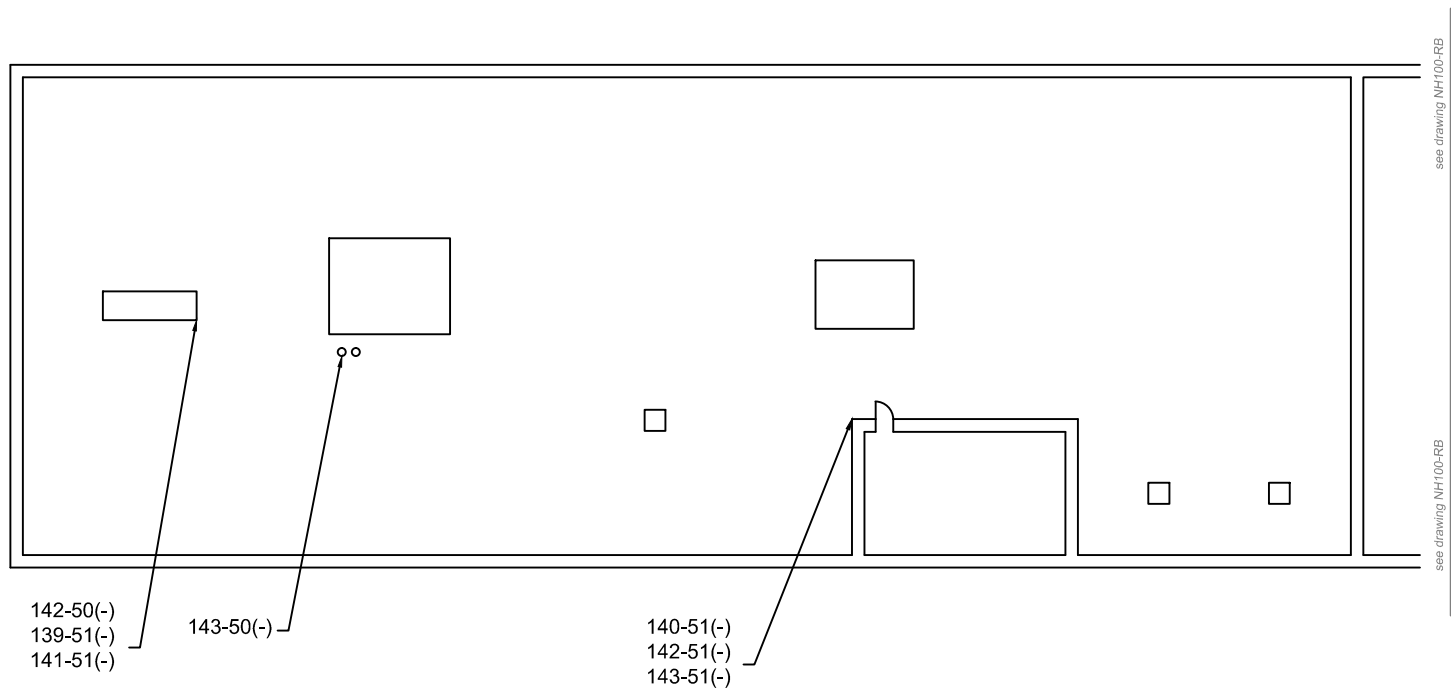
NAX - NOT ACCESSIBLE (AREA)



ACM LEGEND

ROOF SEALER, GRAY [HM143]

CY2014 ASBESTOS INSPECTION NH100-R(FG) MCB CAMP LEJEUNE, NC																																											
MCB CAMP LEJEUNE, NC																																											
<table border="1"> <tr> <th>NO.</th> <th>DESCRIPTION</th> <th>DATE</th> <th>APPROVED</th> </tr> <tr><td> </td><td> </td><td> </td><td> </td></tr> <tr><td> </td><td> </td><td> </td><td> </td></tr> <tr><td> </td><td> </td><td> </td><td> </td></tr> <tr><td> </td><td> </td><td> </td><td> </td></tr> <tr><td> </td><td> </td><td> </td><td> </td></tr> <tr><td> </td><td> </td><td> </td><td> </td></tr> <tr><td> </td><td> </td><td> </td><td> </td></tr> <tr><td> </td><td> </td><td> </td><td> </td></tr> <tr><td> </td><td> </td><td> </td><td> </td></tr> </table>				NO.	DESCRIPTION	DATE	APPROVED																																				
NO.	DESCRIPTION	DATE	APPROVED																																								
<table border="1"> <tr> <td>CHECKED BY: DO</td> <td>DATE: DECEMBER 2014</td> </tr> <tr> <td>DRAWN BY: JAC</td> <td>SHEET: 1 OF 2</td> </tr> <tr> <td>SCALE: GRAPHIC</td> <td></td> </tr> </table>				CHECKED BY: DO	DATE: DECEMBER 2014	DRAWN BY: JAC	SHEET: 1 OF 2	SCALE: GRAPHIC																																			
CHECKED BY: DO	DATE: DECEMBER 2014																																										
DRAWN BY: JAC	SHEET: 1 OF 2																																										
SCALE: GRAPHIC																																											

[illegible]

MCB CAMP LEJEUNE, NC



CY2014 ASBESTOS INSPECTION
NH100-RA
MCB CAMP LEJEUNE, NC

CHECKED BY: DO
DRAWN BY: ARD
SCALE: GRAPHIC
DATE: DECEMBER 2014
SHEET 1 OF 2

