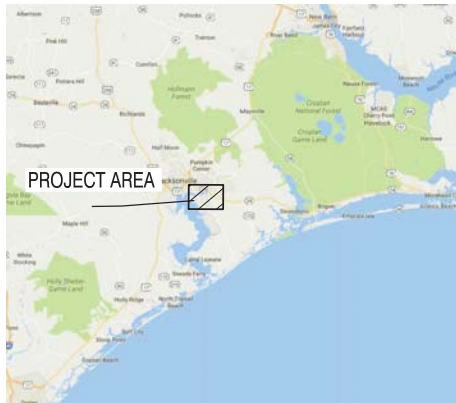


ST091-15 BOILERS AND RM099-17 INSTALL HVAC (REHEAT COILS), NH100 NAVAL HOSPITAL US MARINE CORPS BASE CAMP LEJEUNE, NC FINAL DESIGN - ISSUED FOR CONSTRUCTION



VICINITY MAP
NOT TO SCALE



PROJECT SITE MAP (NH100)
NOT TO SCALE



DATE	05/23/19
DESCRIPTION	ISSUED FOR CONSTRUCTION
CBHF Engineers, PLLC 2240 Valsparan Drive Wilmington, NC 28401 Phone: 910.791.4000 Fax: 910.791.6300 www.cbhfhq.com	
FOR COMMENT MARK 7/19/2019	
REVISION 1. LT David Hartley via Email REVISION ID: 001 - 10/2/2019 CDR: WTD LOW WTD LOW 100 PL/PM: DWS/KDB BRANCH BRANCH: CDR DWT ENGINEER: EJA FILE PROJECTION: HPN	
DEPARTMENT OF THE NAVY NAVAL FACILITIES ENGINEERING COMMAND NAVAL FACILITIES ENGINEERING COMMAND - MID-ATLANTIC NAVAL STATION, WASHINGTON, WASHINGTON U.S. MARINE CORPS CAMP LEJEUNE, N.C. REPLACE BOILERS AND INSTALL REHEAT COILS - NH100 NAVAL HOSPITAL	
COVER SHEET AND VICINITY MAP	
SCALE: AS NOTED EPROJECT NO.: CONSTRUCTION NO.: NAVFAC DRAWING NO.: 12790400 SHEET 1 OF 156 G-001	

NAVFAC DWG NO.	EPROJECT N
----------------	------------

bioRxiv preprint doi: <https://doi.org/10.1101/105111>; this version posted January 31, 2017. The copyright holder for this preprint (which was not certified by peer review) is the author/funder, who has granted bioRxiv a license to display the preprint in perpetuity. It is made available under aCC-BY-NC-ND 4.0 International license.

MECHANICAL PIPE SYMBOLS

	3-WAY CONTROL VALVE
	2-WAY CONTROL VALVE
	BALL VALVE
	BLOCK VALVE / SHUTOFF VALVE
	GAUGE
	PUMP
	ANGLE VALVE
	DRAIN
	CHECK VALVE
	GLOBE VALVE
	FLOW TRANSMITTER
	STEAM TRAP
	RPZ
	NORMALLY CLOSED
	BOILER BLOWDOWN VALVE (SUPPLIED WITH BOILER)
	BOILER STOP CHECK VALVE
	FLANGED BUTTERFLY VALVE
	FLANGE
	FLOW MEASURING ORIFICE

NOTE: ALL ITEMS MAY NOT BE USED IN PROJECT.

MECHANICAL LEGEND

	TEMPERATURE SENSOR
	TEMPERATURE/HUMIDITY SENSOR
	DUCT SMOKE DETECTOR
	INDICATES TO DEMOLISH
	GAS METER
	GAS SHUTOFF VALVE
	EXTENT OF DEMOLITION
	POINT OF CONNECTION
	DIFFUSER/ REGISTER/ GRILLE NO. AS SHOWN ON PLAN AND SCHEDULE
	SG, RG, TEG
	AIRFLOW, CFM

NOTE: ALL ITEMS MAY NOT BE USED IN PROJECT.

MECHANICAL PIPE LEGEND

	HEATING HOT WATER SUPPLY
	HEATING HOT WATER RETURN
	HIGH PRESSURE STEAM
	EXISTING HIGH PRESSURE STEAM
	HIGH PRESSURE CONDENSATE
	EXISTING HIGH PRESSURE CONDENSATE
	BOTTOM BLOW DOWN
	CONTINUOUS BLOW DOWN
	BOILER FEED WATER
	EXISTING PUMPED CONDENSATE
	NATURAL GAS
	EXISTING CHEMICAL FEED SUPPLY

MECHANICAL DUCTWORK LEGEND

	BALANCING DAMPER
	CEILING RETURN OR TRANSFER REGISTER/GRILLES
	EXHAUST GRILLES
	CEILING SUPPLY DIFFUSERS
	CONICAL TEE
	HORIZONTAL FIRE DAMPER
	VERTICAL FIRE DAMPER
	VERTICAL SMOKE DAMPER
	VERTICAL FIRE/SMOKE DAMPER
	FLEXIBLE DUCT CONNECTION
	DECLINED DROP WITH RESPECT TO AIRFLOW
	INCLINED RISE WITH RESPECT TO AIRFLOW
	INDICATES ROUND DUCTWORK
	MITERED ELBOW WITH TURNING VANES
	MOTORIZED CONTROL DAMPER
	RADIUS ELBOW
	SUPPLY DUCT TURNING UP (ROUND OR RECTANGULAR)
	RETURN DUCT TURNING UP (ROUND OR RECTANGULAR)
	EXHAUST DUCT TURNING UP (ROUND OR RECTANGULAR)
	OUTSIDE AIR DUCT TURNING UP (ROUND OR RECTANGULAR)
	SUPPLY DUCT TURNING DOWN (ROUND OR RECTANGULAR)
	RETURN DUCT TURNING DOWN (ROUND OR RECTANGULAR)
	EXHAUST DUCT TURNING DOWN (ROUND OR RECTANGULAR)
	OUTSIDE AIR DUCT TURNING DOWN (ROUND OR RECTANGULAR)
	SQUARE OR RECTANGULAR DUCTWORK
	VOLUME DAMPER
	TAKEOFF WITH 45° THROAT
	RETURN, EXHAUST OR TRANSFER AIR FLOW
	SUPPLY AIR FLOW
	DUCT CROSSING
	RECTANGULAR DUCT TURNING DOWN WITH CHANGE OF DIRECTION
	ROUND DUCT TURNING DOWN WITH CHANGE OF DIRECTION
	TERMINATION OF DUCT WITH BRANCH CONNECTIONS
	RECTANGULAR TO ROUND DUCT TRANSITION
	SUPPLY AIR DUCTWORK
	RETURN AIR DUCTWORK
	EXHAUST AIR DUCTWORK
	OUTSIDE AIR DUCTWORK
	MAKEUP AIR DUCTWORK
	DUCT SMOKE DETECTOR
	STATIC PRESSURE SENSOR
	DIFFERENTIAL PRESSURE TRANSDUCER

NOTE: ALL ITEMS MAY NOT BE USED IN PROJECT.

MECHANICAL GENERAL NOTES:

1. ALL MECHANICAL WORK SHALL BE IN STRICT COMPLIANCE WITH ALL APPLICABLE FEDERAL, STATE AND LOCAL CODES AND STANDARDS.
2. ALL DIMENSIONS AND ELEVATIONS FOR NEW EQUIPMENT, DUCTWORK, PIPING AND APPARATUS ARE APPROXIMATE AND ARE ONLY FOR CONTRACTOR'S GUIDANCE. CONTRACTOR SHALL SUBMIT DIMENSIONS AND ELEVATIONS VERIFIED IN THE FIELD. DUCTWORK AND PIPING INDICATED ON THE DRAWINGS, SECTIONS AND PROSPECTIVE VIEWS ARE SHOWN DIAGMATICALLY. DUCT AND PIPE ELEVATIONS IN EXACT LOCATIONS SHALL BE DETERMINED BY THE INSTALLING CONTRACTOR AND DETAILED ON THE SHOP DRAWINGS.
3. ALL DUCT DIMENSIONS INDICATED ON PLAN ARE CLEAR INSIDE DIMENSIONS. CONTRACTOR MUST ACCOUNT FOR THE THICKNESS OF EXTERIOR INSULATION WHEN DETERMINING INSTALLATION CLEARANCES.
4. THE CONTRACTOR SHALL TEMPORARILY COVER ALL EXPOSED DUCT AND PIPE OPENINGS WITH A NON-COMBUSTIBLE MATERIAL, AND SEAL THEM AIR TIGHT TO PREVENT CONTAMINATION OF THE RESPECTIVE SYSTEMS DURING CONSTRUCTION.
5. CONTRACTOR SHALL REMOVE AND DISPOSE OF OFFSITE ALL DEMOLISHED WORK IN ACCEPTABLE AND SAFE MANNER AND SHALL KEEP ALL NON-WORK AREAS CLEAN AND SAFE.
6. ALL EXISTING EQUIPMENT AND CONNECTIONS THAT NEED TO BE TEMPORARILY DEMOLISHED FOR RIGGING AND / OR INSTALLATION SHALL BE REINSTALLED AND BROUGHT BACK TO ORIGINAL CONDITIONS PRIOR TO TEMPORARY REMOVAL.
7. INSTALL WORK SO AS TO BE READILY ACCESSIBLE FOR OPERATION, MAINTENANCE AND REPAIR. MINOR DEVIATIONS FROM DRAWINGS MAY BE MADE TO ACCOMPLISH THIS, BUT CHANGES WHICH INVOLVE EXTRA COST SHALL NOT BE MADE WITHOUT APPROVAL.

MECHANICAL DEMOLITION NOTES

1. THE CONTRACTOR SHALL REVIEW THE DRAWINGS AND SPECIFICATIONS FOR DEMOLITION REQUIREMENTS AND LAYOUT HIS WORK IN A COMPATIBLE AND COMPLEMENTARY MANNER. REMOVE ALL EQUIPMENT, DUCTWORK, SUPPORTS, CONTROLS, ACCESSORIES, ETC., AND MECHANICAL ITEMS MADE OBSOLETE BY THESE ALTERATIONS AS SHOWN IN THE MECHANICAL DRAWINGS. ALL ITEMS TO BE REMOVED OR MODIFIED MAY NOT BE SHOWN, HOWEVER, THIS CONTRACTOR SHALL REMOVE ANY MECHANICAL WORK AS REQUIRED BY THE CONSTRUCTION OR AS DIRECTED BY THE GOVERNMENT CONTRACTING OFFICER. SURVEY THE AFFECTED AREAS BEFORE SUBMITTING A BID.
2. SCHEDULING OF DEMOLITION - COORDINATE SCHEDULING OF MECHANICAL DEMOLITION WORK WITH THE CONTRACTING OFFICER SO AS TO MINIMIZE DISRUPTION OF THE GOVERNMENT'S USE OF THE FACILITIES AND MAINTAIN THE CONSTRUCTION SEQUENCE. SEE DRAWINGS AND SPECIFICATIONS FOR ADDITIONAL INSTRUCTIONS CONCERNING PHASING AND SEQUENCE OF WORK.
3. DEMOLISHED MATERIALS - UNLESS SPECIFICALLY REQUESTED BY THE GOVERNMENT, ALL DEMOLISHED MECHANICAL MATERIALS SHALL BECOME THE PROPERTY OF THE CONTRACTOR AND SHALL BE REMOVED FROM THE SITE AND DISPOSED OF PROPERLY.
4. CUTTING AND PATCHING - PERFORM CUTTING AND PATCHING FOR MECHANICAL WORK SO AS TO MINIMIZE DAMAGE TO CEILINGS, FLOORS AND WALLS.
5. THESE DRAWINGS ARE COMPILED BY THE ENGINEER FROM THE GOVERNMENT'S AS-BUILT RECORD DRAWINGS AND LIMITED FIELD VERIFICATION OF EXISTING CONDITIONS FOR THE PURPOSE OF INDICATING THE WORK REQUIRED AND ARE BELIEVED TO BE CORRECT. NOTWITHSTANDING, THE CONTRACTOR SHALL VERIFY ALL DUCTWORK, EQUIPMENT LOCATIONS, DIMENSIONS AND ALL FIELD CONDITIONS AFFECTING HIS WORK.
6. WHERE MECHANICAL SYSTEMS PASS THROUGH THE DEMOLITION AREAS TO SERVE OTHER PORTIONS OF THE PREMISES, THEY SHALL REMAIN OR BE SUITABLY RELOCATED AND THE SYSTEM RESTORED TO NORMAL OPERATION. ADVISE THE CONTRACTING OFFICER IMMEDIATELY IF SUCH CONDITIONS ARE UNCOVERED BEFORE PROCEEDING WITH ADDITIONAL WORK.
7. PROTECT ALL EXISTING LIFE SAFETY SYSTEMS, FIRE ALARM AND PUBLIC ADDRESS SYSTEMS AND MAINTAIN THEM IN OPERATION THROUGHOUT THE PROGRESS OF THE WORK. NOTIFY THE CONTRACTING OFFICER IN WRITING OF SHUTDOWNS ARE REQUIRED PRIOR TO ANY OUTAGE OF SERVICE. WHERE THE DURATION OF A PROPOSED OUTAGE CANNOT BE TOLERATED BY THE GOVERNMENT, PROVIDE TEMPORARY CONNECTIONS AS REQUIRED MAINTAINING SERVICE.
8. SURVEY THE AFFECTED AREAS BEFORE STARTING DEMOLITION AS ALL EXISTING CONDITIONS CANNOT BE COMPLETELY DEPicted ON THE DRAWINGS AND SOME UNUSUAL CONDITIONS EXIST.
9. IF ANY UNUSUAL STRUCTURAL OR ARCHITECTURAL CONDITIONS ARE ENCOUNTERED DURING DEMOLITION, CONTACT THE CONTRACTING OFFICER FOR ASSISTANCE.

MECHANICAL ABBREVIATIONS

ABBREVIATION	TERM
ADJ	ADJUSTABLE
AMCA	AIR MOVEMENT AND CONTROL ASSOCIATION
AMP	AMPERE (AMP, AMPS)
ASTM	AMERICAN SOCIETY OF TESTING AND MATERIALS
CFM	CUBIC FEET PER MINUTE
CIP	CAST IN PLACE
CMU	CONCRETE MASONRY UNIT
COP	COEFFICIENT OF PERFORMANCE
DB	DRY BULB
DEG OR °	DEGREE
EA	EXHAUST AIR
EG	EXHAUST GRILLE
EAT	ENTERING AIR TEMPERATURE
ECM	ELECTRONICALLY COMMUTATED MOTOR
EER	ENERGY EFFICIENCY RATIO
ESP	EXTERNAL STATIC PRESSURE
F	FAN
°F	FAHRENHEIT
FLA	FULL LOAD AMPS
FT	FEET
HC	HOT WATER COIL
HGT OR H	HEIGHT
HP	HORSEPOWER
HR	HOUR(S)
IN	INCH
IN.-WG	INCHES WATER GAUGE
KW	KILOWATT
LAT	LEAVING AIR TEMPERATURE
LBS	POUNDS
L	LOUVER
MAX	MAXIMUM
MBH	1000 BTUH
MCA	MINIMUM CIRCUIT AMPACITY
MCWB	MEAN COINCIDENT WET BULB
MIN	MINIMUM
MOCP	MAXIMUM OVER CURRENT PROTECTION
NEMA	NATIONAL ELECTRICAL MANUFACTURERS ASSOCIATION
OZ	OUNCE
OA	OUTSIDE AIR
%	PERCENT
RA	RETURN AIR
RG	RETURN GRILLE
RPM	REVOLUTIONS PER MINUTE
RTU	ROOF TOP UNIT
SA	SUPPLY AIR
SF	SQUARE-Feet
SG	SUPPLY GRILLE
SO	SQUARE
TC	TRANSFER GRILLE
TYP	TYPICAL
UH	UNIT HEATER
V/PH/HZ	VOLT/PHASE/HERTZ
VTR	VENT THROUGH ROOF
W	WIDTH
WB	WET BULB

NOTE: ALL ABBREVIATIONS MAY NOT BE USED IN PROJECT.

DDC SYSTEM INTEGRATION NOTE:

THE ENERGY MANAGEMENT AND CONTROL SYSTEM (EMCS) AT CAMP LEJEUNE IS BY JOHNSON CONTROLS, INC. (JCI) METASYS. INCLUDE ALL CONTROL POINTS, SEQUENCES, PROGRAMMING, AND GRAPHIC UPDATES FOR NEW AND EXISTING HVAC EQUIPMENT MODIFIED UNDER THIS PROJECT TO MATCH THE BUILDING STANDARD FOR A COMPLETE AND OPERABLE SYSTEM.

DATE	05/23/19
ISSUED FOR CONSTRUCTION	0
DESCRIPTION	
SCALE	AS NOTED
PROJECT NO.	12790403
CONTRACT NO.	
NAVJAG DRAWING NO.	12790403
SHEET	4 OF 156
M-001	

REPLACE BOILERS AND INSTALL REHEAT COILS - NH100 NAVAL HOSPITAL

MECHANICAL ABBREVIATIONS, GENERAL NOTES, DEMOLITION NOTES AND LEGENDS

U.S. MARINE CORPS
CAMP LEJEUNE, N.C.
NAVAL FACILITIES ENGINEERING COMMAND - MID-ATLANTIC
NAVAL STATION, NORFOLK, VIRGINIA

SCALE: AS NOTED

PROJECT NO.: 12790403

CONTRACT NO.:

NAVJAG DRAWING NO.: 12790403

SHEET 4 OF 156

M-001

DATE: 05/23/19

ISSUED FOR CONSTRUCTION: 0

DESCRIPTION:

SCALE: AS NOTED

PROJECT NO.: 12790403

CONTRACT NO.:

NAVJAG DRAWING NO.: 12790403

SHEET 4 OF 156

M-001

1

2

3

4

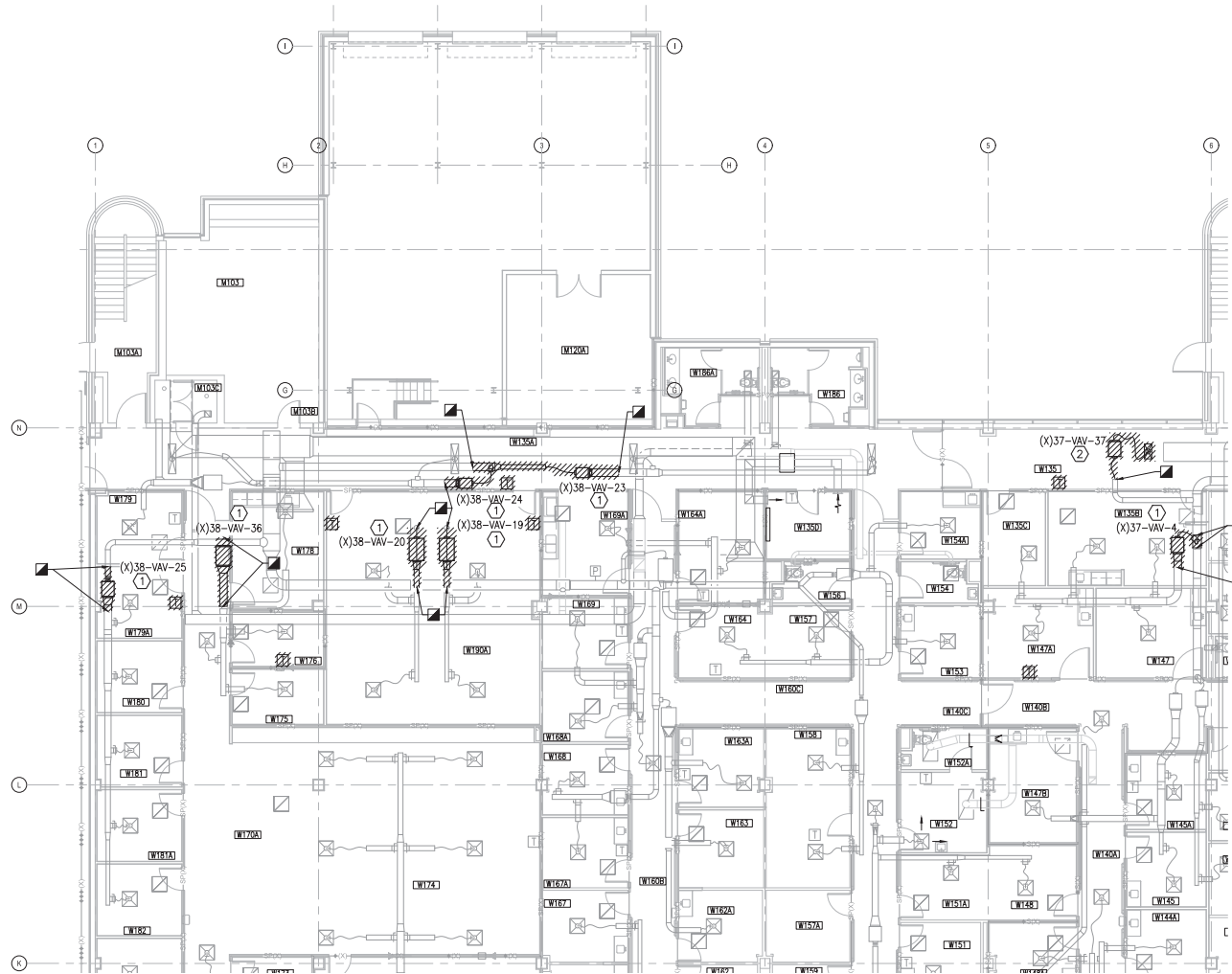
5

D

C

B

A



PARTIAL PLAN - LEVEL 1 - AREA A1

SCALE: 1/8"=1'-0"



KEYED NOTES

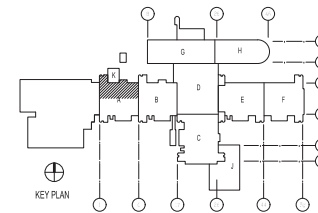
- ① REMOVE AND DISPOSE OF EXISTING VAV BOX INCLUDING CONTROLS AND HANGARS. DEMOLISH DUCT TO EXTENT SHOWN.
- ② REMOVE AND DISPOSE OF EXISTING VAV BOX INCLUDING CONTROLS AND HANGARS. DEMOLISH DUCT AND DIFFUSERS TO EXTENT SHOWN.
- ③ REMOVE AND DISPOSE OF EXISTING VAV BOX INCLUDING CONTROLS AND HANGARS. DEMOLISH DUCT TO EXTENT SHOWN. CAP TAKE OFF DUCT NEAR MAIN.
- ④ REMOVE AND DISPOSE OF EXISTING DUCT TO EXTENT SHOWN.

* NOTES ABOVE NOT INDICATED ON ALL PLANS.

GENERAL NOTES

1. CONTRACTOR SHALL REPAIR ALL RATED WALL PENETRATIONS NOT RE-USED FOR NEW INSTALLATIONS.

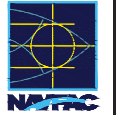
KEY PLAN



GRAPHIC SCALE



DATE	DESCRIPTION
05/23/19	ISSUED FOR CONSTRUCTION



CBHF
Engineers, PLLC

2248 Yallop Drive
Wilmington, NC 28401
Phone: 910.791.4000
Fax: 910.791.6386
www.cbhfh.com

FOR COMMON NAME: 7/19/2019

LT David Hartley via Email
REVISION NO. 001
DATE 05/23/2019
BY: DGH/KDB
CHECKED: DGH/KDB
DATE 05/23/2019
BY: DGH/KDB

DEPARTMENT OF THE NAVY
NAVAL FACILITIES ENGINEERING COMMAND
NAVAL STATION, NORFOLK, VIRGINIA

U.S. MARINE CORPS
CAMP LEJEUNE, N.C.
REPLACE BOILERS AND INSTALL REHEAT
COILS - NH100 NAVAL HOSPITAL
PARTIAL MECHANICAL HVAC DEMOLITION PLAN
- LEVEL 1 - AREA A1

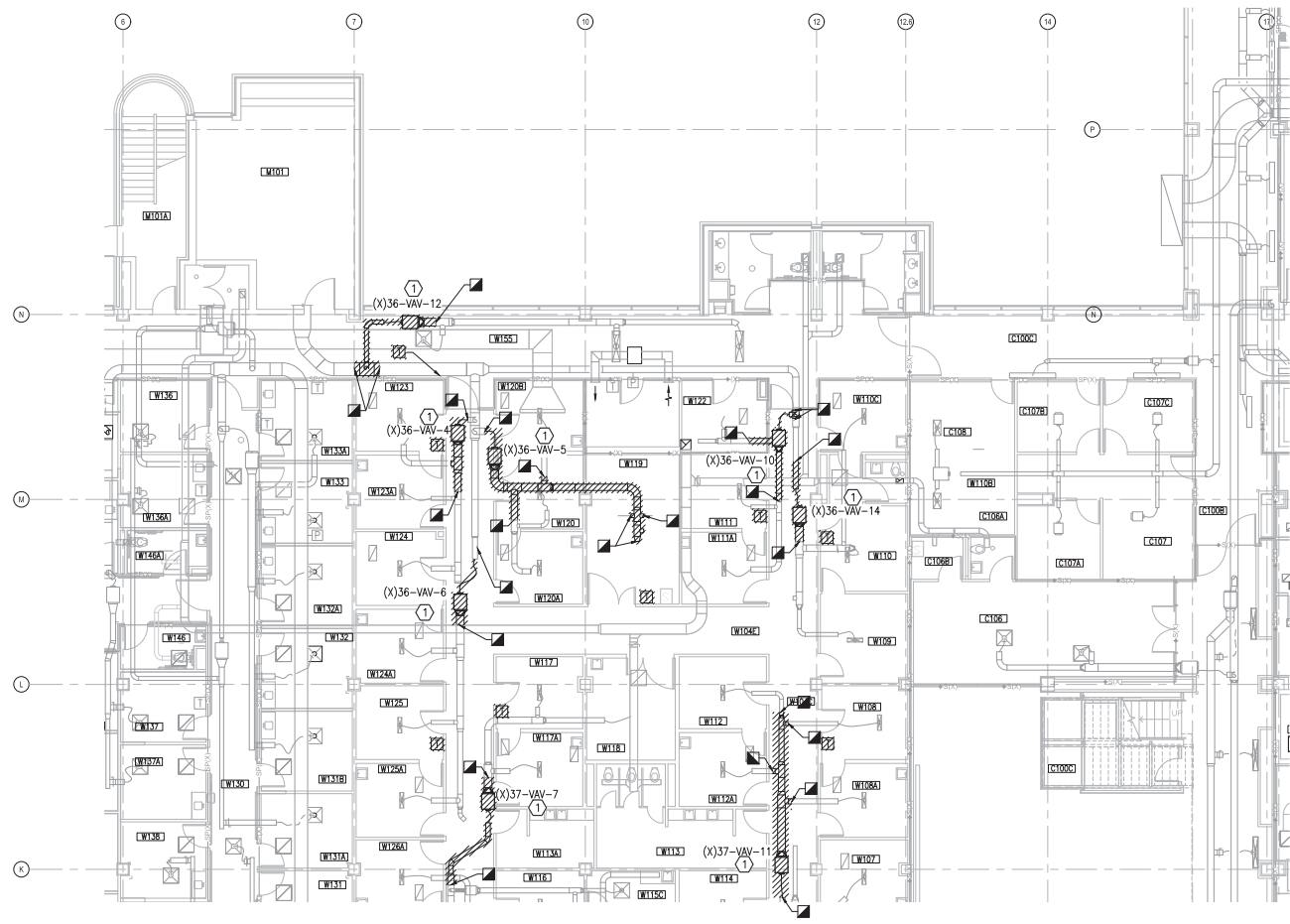
SCALE: AS NOTED
EXHIBIT NO.:
CONTRACT NO.:

NAVFAC DRAWING NO.:
12790404
SHEET: 5 OF 156

MD101-A1
DRAWING REVISION: 31 JANUARY 2017

1 2 3 4 5

D
C
B
A



PARTIAL PLAN - LEVEL 1 - AREA B1
SCALE: 1/8"=1'-0"
PLAN NORTH

1 2 3 4 5

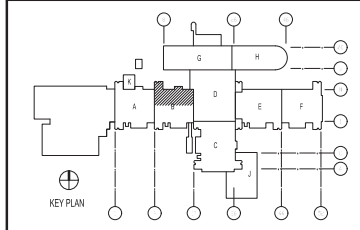
KEYED NOTES

- 1 REMOVE AND DISPOSE OF EXISTING VAV BOX INCLUDING CONTROLS AND HANGARS. DEMOLISH DUCT TO EXTENT SHOWN.
 - 2 REMOVE AND DISPOSE OF EXISTING VAV BOX INCLUDING CONTROLS AND HANGARS. DEMOLISH DUCT AND DIFFUSERS TO EXTENT SHOWN.
 - 3 REMOVE AND DISPOSE OF EXISTING VAV BOX INCLUDING CONTROLS AND HANGARS. DEMOLISH DUCT TO EXTENT SHOWN. CAP TAKE OFF DUCT NEAR MAIN.
 - 4 REMOVE AND DISPOSE OF EXISTING DUCT TO EXTENT SHOWN.
- * NOTES ABOVE NOT INDICATED ON ALL PLANS.

GENERAL NOTES

1. CONTRACTOR SHALL REPAIR ALL RATED WALL PENETRATIONS NOT RE-USED FOR NEW INSTALLATIONS.

KEY PLAN



GRAPHIC SCALE



DATE	05/23/19
ISSUED FOR CONSTRUCTION	0
DESCRIPTION	
REV	

NAVFAC

DAVID HARTLEY
P.E.
05/23/19

CBHF
Engineers, PLLC
2248 Yalagator Drive
Wilmington, NC 28401
Phone: 910.791.4000
Fax: 910.791.6286
www.cbhfhq.com

FOR COMMON NAME: 71912619

LT David Hartley via Email
REVISION: 05/23/19

DES: 100 LOW W10 LOW 100

PLN/WM: DWS/KDB

BRANCH BRANCH: C470

ENTRY ENGINEER: EJA

FILE PRODUCTION: HP1

DEPARTMENT OF THE NAVY
NAVAL FACILITIES ENGINEERING COMMAND - MID-ATLANTIC
NAVAL STATION, NORFOLK, VIRGINIA
U.S. MARINE CORPS
CAMP LEJEUNE, N.C.
REPLACE BOILERS AND INSTALL REHEAT
COILS - NH100 NAVAL HOSPITAL
PARTIAL MECHANICAL HVAC DEMOLITION PLAN
- LEVEL 1 - AREA B1

SCALE: AS NOTED

EXPROJEKT NO.:

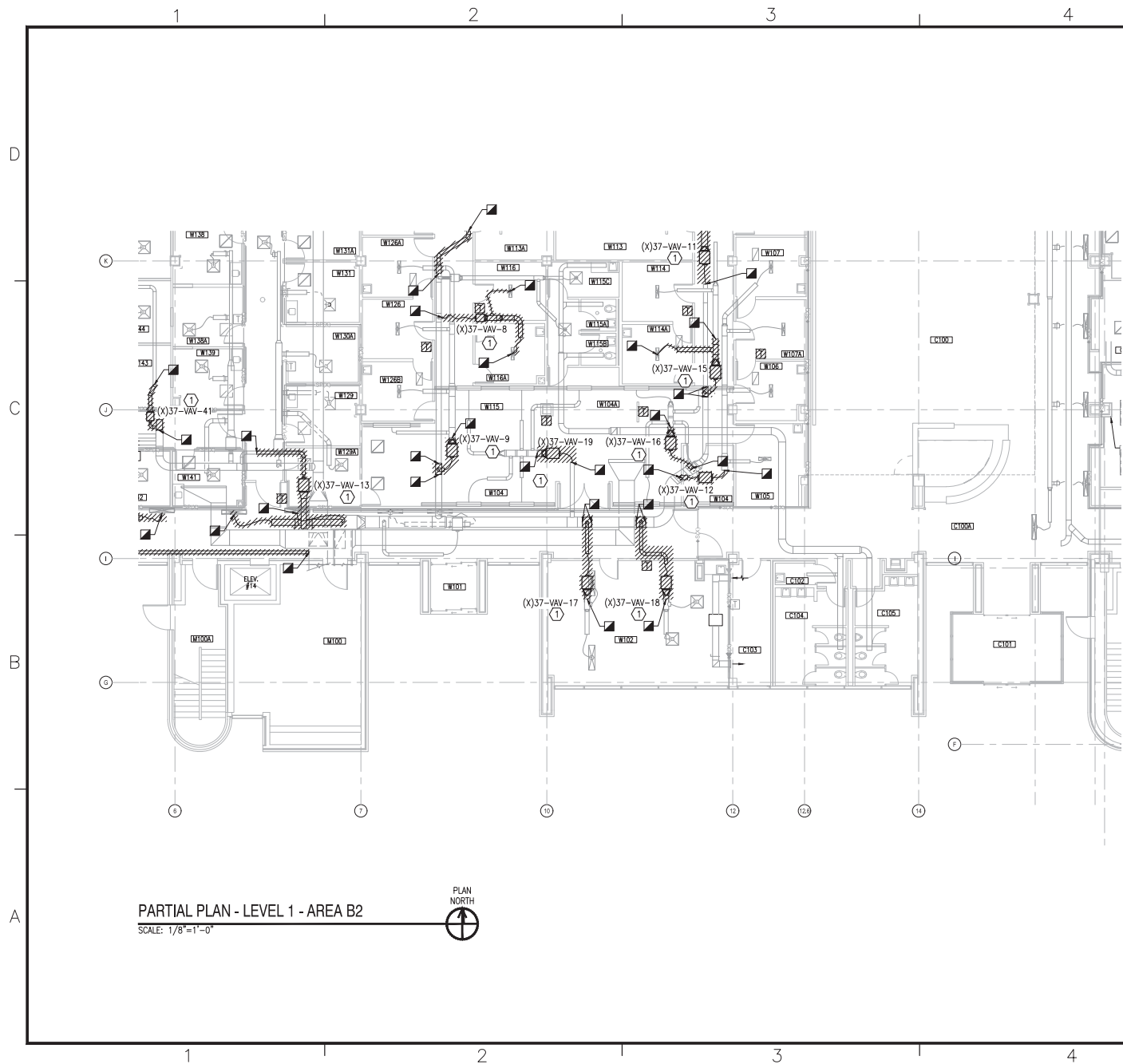
CONTRIC. CENTER. NO.:

NAVFAC DRAWING NO. 12790406

SHEET 7 OF 156

MD101-B1

DRAWING REVISION: 31 JANUARY 2017



KEYED NOTES

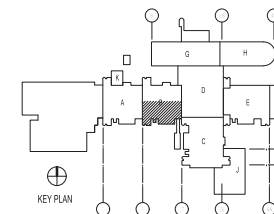
- ① REMOVE AND DISPOSE OF EXISTING VAV BOX INCLUDING CONTROLS AND HANGARS. DEMOLISH DUCT TO EXTENT SHOWN.
- ② REMOVE AND DISPOSE OF EXISTING VAV BOX INCLUDING CONTROLS AND HANGARS. DEMOLISH DUCT AND DIFFUSERS TO EXTENT SHOWN.
- ③ REMOVE AND DISPOSE OF EXISTING VAV BOX INCLUDING CONTROLS AND HANGARS. DEMOLISH DUCT TO EXTENT SHOWN. CAP TAKE OFF DUCT NEAR MAIN.
- ④ REMOVE AND DISPOSE OF EXISTING DUCT TO EXTENT SHOWN.

* NOTES ABOVE NOT INDICATED ON ALL PLANS.

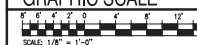
GENERAL NOTES

1. CONTRACTOR SHALL REPAIR ALL RATED WALL PENETRATIONS NOT RE-USED FOR NEW INSTALLATIONS.

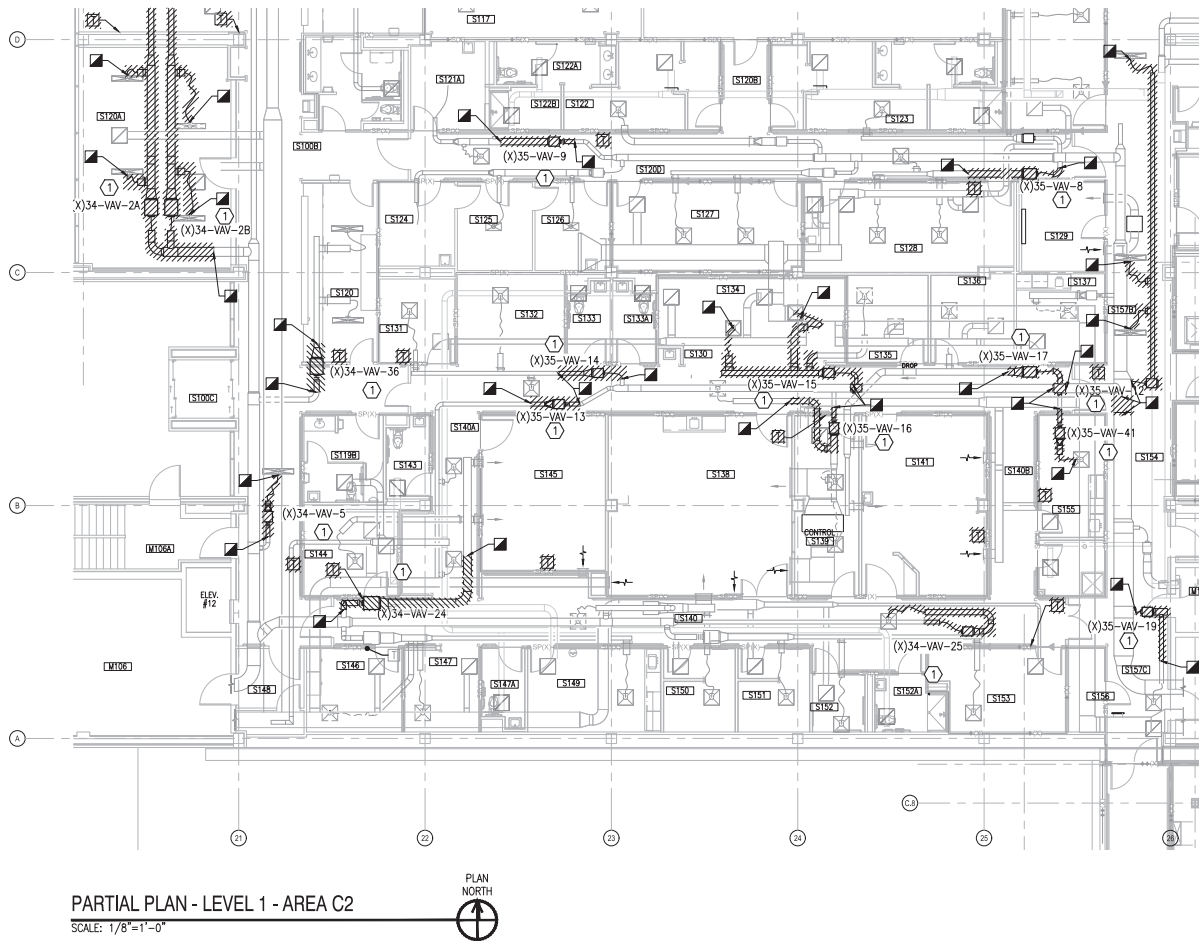
KEY PLAN



GRAPHIC SCALE



DATE	05/23/19
DESCRIPTION	ISSUED FOR CONSTRUCTION
BY	0
APPV	
CBHF Engineers, PLLC 2240 Yallop Drive Wilmington, NC 28401 Phone: 910.791.4000 Fax: 910.791.6286 www.cbhfhq.com	
FOR COMMENT MARK 7/19/2019 REVISION LT David Hartley via Email REVISION TO 001 - 05/23/19 100 100 100 100 100 100 100 100 100 100 PLAN DWS/KDB BRANCH BRANCH DWT/ENGR FILE PROVISION EJA HP1	
DEPARTMENT OF THE NAVY NAVAL FACILITIES ENGINEERING COMMAND NAVAL FACILITIES ENGINEERING COMMAND - MIDATLANTIC NAVAL STATION, NORFOLK, VIRGINIA U.S. MARINE CORPS CAMP LEBLANC, N.C. REPLACE BOILERS AND INSTALL REHEAT COILS - NH100 NAVAL HOSPITAL PARTIAL MECHANICAL HVAC DEMOLITION PLAN - LEVEL 1 - AREA B2	
SCALE: AS NOTED EXPROJEST NO.: CONSTRUCTION NO.: NAVFAC DRAWING NO.: 12790407 SHEET 8 OF 156 MD101-B2 DRAFTING REVISION: 11 JANUARY 2017	



KEYED NOTES

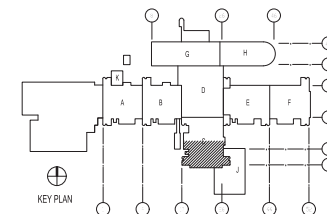
- ① REMOVE AND DISPOSE OF EXISTING VAV BOX INCLUDING CONTROLS AND HANGARS. DEMOLISH DUCT TO EXTENT SHOWN.
- ② REMOVE AND DISPOSE OF EXISTING VAV BOX INCLUDING CONTROLS AND HANGARS. DEMOLISH DUCT AND DIFFUSERS TO EXTENT SHOWN.
- ③ REMOVE AND DISPOSE OF EXISTING VAV BOX INCLUDING CONTROLS AND HANGARS. DEMOLISH DUCT TO EXTENT SHOWN. CAP TAKE OFF DUCT NEAR MAIN.
- ④ REMOVE AND DISPOSE OF EXISTING DUCT TO EXTENT SHOWN.

* NOTES ABOVE NOT INDICATED ON ALL PLANS.

GENERAL NOTES

1. CONTRACTOR SHALL REPAIR ALL RATED WALL PENETRATIONS NOT RE-USED FOR NEW INSTALLATIONS.

KEY PLAN



GRAPHIC SCALE



DATE	05/23/19
ISSUED FOR CONSTRUCTION	0
DESCRIPTION	
BY	
CBHF Engineers, PLLC 2246 Yallop Drive Wilmington, NC 28401 Phone: 910.791.4000 Fax: 910.791.5289 www.cbhfw.com	
APPROVED FOR COMMENT DATE 7/19/2019 REVISION LT David Hartley via Email REVISION NO. 001 - 05/23/19 DES 100 LOW WTD LOW 100 PLAN DWG/KDB BRANCH BRANCH C-2 DRY ENGINEER EJA FILE PRODUCTION HPV	
DEPARTMENT OF THE NAVY NAVAL FACILITIES ENGINEERING COMMAND NAVAL FACILITIES ENGINEERING COMMAND - MID-ATLANTIC NAVAL STATION, NORFOLK, VIRGINIA CAMP LEBLANC, N.C. U.S. MARINE CORPS REPLACE BOILERS AND INSTALL REHEAT COILS - NH100 NAVAL HOSPITAL PARTIAL MECHANICAL HVAC DEMOLITION PLAN LEVEL 1 - AREA C2	
SCALE: AS NOTED EXPROJEKT NO.: CONSTRUCTION CENTER NO.: NAVFAC DRAWING NO.: 2790409 SHEET 10 OF 156 MD101-C2 DRAWING REVISION: 31 JANUARY 2017	

PARTIAL PLAN - LEVEL 1 - AREA D2
SCALE: 1/8"=1'-0"



KEYED NOTES

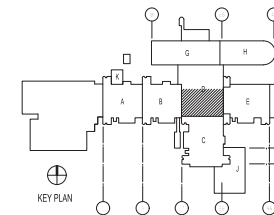
- ① REMOVE AND DISPOSE OF EXISTING VAV BOX INCLUDING CONTROLS AND HANGARS. DEMOLISH DUCT TO EXTENT SHOWN.
- ② REMOVE AND DISPOSE OF EXISTING VAV BOX INCLUDING CONTROLS AND HANGARS. DEMOLISH DUCT AND DIFFUSERS TO EXTENT SHOWN.
- ③ REMOVE AND DISPOSE OF EXISTING VAV BOX INCLUDING CONTROLS AND HANGARS. DEMOLISH DUCT TO EXTENT SHOWN. CAP TAKE OFF DUCT NEAR MAIN.
- ④ REMOVE AND DISPOSE OF EXISTING DUCT TO EXTENT SHOWN.

* NOTES ABOVE NOT INDICATED ON ALL PLANS.

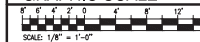
GENERAL NOTES

1. CONTRACTOR SHALL REPAIR ALL RATED WALL PENETRATIONS NOT RE-USED FOR NEW INSTALLATIONS.

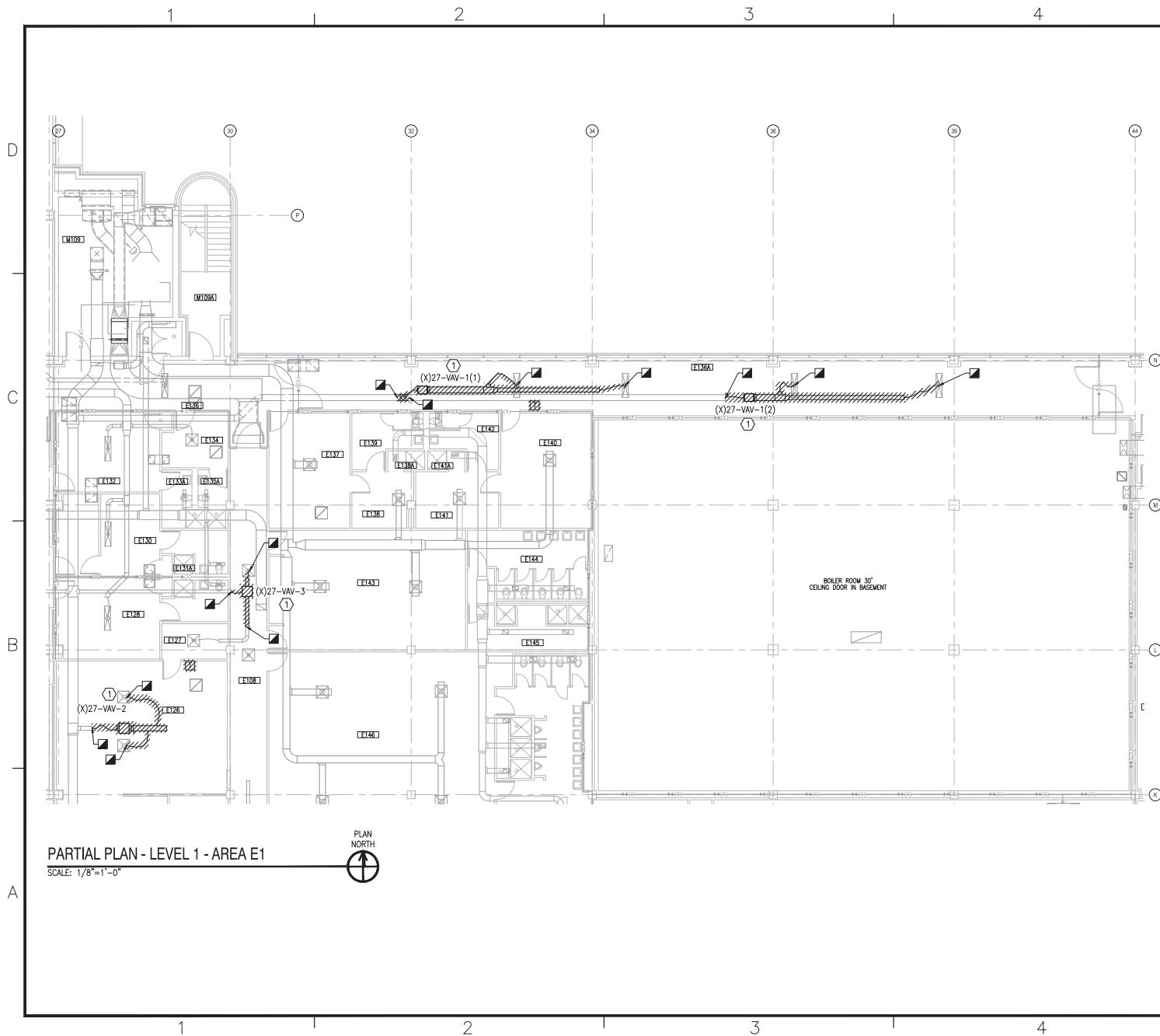
KEY PLAN



GRAPHIC SCALE



DATE	05/23/19
ISSUED FOR CONSTRUCTION	0
DESCRIPTION	
CBHF Engineers, PLLC 2240 Yallop Drive Wilmington, NC 28401 Phone: 910.791.4000 Fax: 910.791.6286 www.cbhfhg.com	
FOR COMMON MARK 7/19/2019	
LT David Hartley via Email REVISION TO: 000 - 05/23/19	
DESIGN	100 LOW WID LOW 100
PLAN	DWG/KDB
BRANCH	CA/2
DESIGN ENGINEER	EJA
FILE PRODUCTION	HP/1
DEPARTMENT OF THE NAVY NAVAL FACILITIES ENGINEERING COMMAND - MID-ATLANTIC NAVAL STATION, NORFOLK, VIRGINIA CAMP LEBLANC, N.C. U.S. MARINE CORPS REPLACE BOILERS AND INSTALL REHEAT COILS - NH100 NAVAL HOSPITAL PARTIAL MECHANICAL HVAC DEMOLITION PLAN - LEVEL 1 - AREA D2	
SCALE:	AS NOTED
PROJECT NO.:	
CONTRACT NO.:	
NAVFAC DRAWING NO.:	12790410
SHEET:	11 OF 136
MD101-D2 <small>DRAWING REVISION: 21 JANUARY 2017</small>	



KEYED NOTES

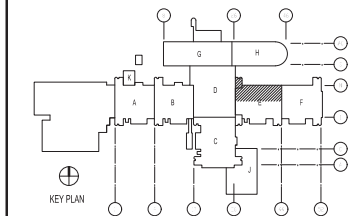
- ① REMOVE AND DISPOSE OF EXISTING VAV BOX INCLUDING CONTROLS AND HANGARS. DEMOLISH DUCT TO EXTENT SHOWN.
- ② REMOVE AND DISPOSE OF EXISTING VAV BOX INCLUDING CONTROLS AND HANGARS. DEMOLISH DUCT AND DIFFUSERS TO EXTENT SHOWN.
- ③ REMOVE AND DISPOSE OF EXISTING VAV BOX INCLUDING CONTROLS AND HANGARS. DEMOLISH DUCT TO EXTENT SHOWN. CAP TAKE OFF DUCT NEAR MAIN.
- ④ REMOVE AND DISPOSE OF EXISTING DUCT TO EXTENT SHOWN.

* NOTES ABOVE NOT INDICATED ON ALL PLANS.

GENERAL NOTES

1. CONTRACTOR SHALL REPAIR ALL RATED WALL PENETRATIONS NOT RE-USED FOR NEW INSTALLATIONS.

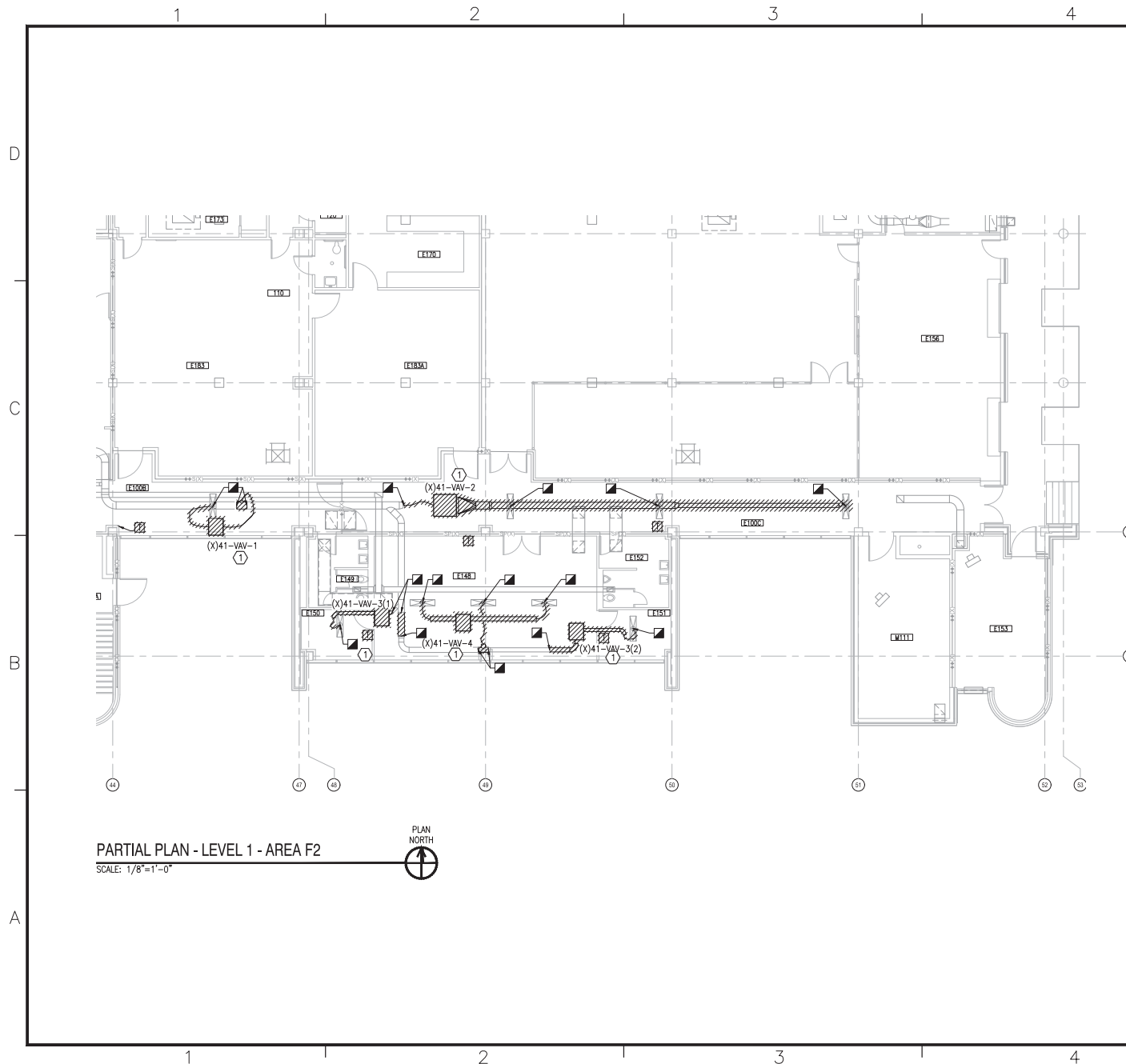
KEY PLAN



GRAPHIC SCALE



DATE	05/23/19
DESCRIPTION	ISSUED FOR CONSTRUCTION
BY	0
CBHF Engineers, PLLC 2246 Yallop Drive Wilmington, NC 28401 Phone: 910.791.4000 Fax: 910.791.5289 www.cbhfhg.com	
APPROVED:	
FOR COMMENT: 7/19/2019	
REVISION:	
LT David Hartley via Email REVISION: 05/23/2019	
CDS: 100 LOW WID LOW 100	
P/W: CWS/KDB	
BRANCH: 04/20	
CHECK: EJA	
FILE: HPA	
DEPARTMENT OF THE NAVY NAVAL FACILITIES ENGINEERING COMMAND - MID-ATLANTIC NAVAL STATION, NORFOLK, VIRGINIA U.S. MARINE CORPS CAMP LEBLANC, N.C. REPLACE BOILERS AND INSTALL REHEAT COILS - NH100 NAVAL HOSPITAL PARTIAL MECHANICAL HVAC DEMOLITION PLAN LEVEL 1 - AREA E1	
SCALE: AS NOTED	
EPROJ: 101	
CONSTRUCTION: 101	
NAVFAC DRAWING NO.: 2790411	
SHEET: 12 OF 12	
MD101-E1	
DRAWING REVISION: 31 JANUARY 2017	



KEYED NOTES

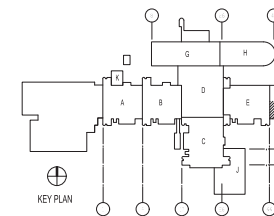
- ① REMOVE AND DISPOSE OF EXISTING VAV BOX INCLUDING CONTROLS AND HANGARS. DEMOLISH DUCT TO EXTENT SHOWN.
- ② REMOVE AND DISPOSE OF EXISTING VAV BOX INCLUDING CONTROLS AND HANGARS. DEMOLISH DUCT AND DIFFUSERS TO EXTENT SHOWN.
- ③ REMOVE AND DISPOSE OF EXISTING VAV BOX INCLUDING CONTROLS AND HANGARS. DEMOLISH DUCT TO EXTENT SHOWN. CAP TAKE OFF DUCT NEAR MAIN.
- ④ REMOVE AND DISPOSE OF EXISTING DUCT TO EXTENT SHOWN.

* NOTES ABOVE NOT INDICATED ON ALL PLANS.

GENERAL NOTES

1. CONTRACTOR SHALL REPAIR ALL RATED WALL PENETRATIONS NOT RE-USED FOR NEW INSTALLATIONS.

KEY PLAN



GRAPHIC SCALE



DATE	05/23/19
DESCRIPTION	ISSUED FOR CONSTRUCTION
BY	0
CBHF Engineers, PLLC 2248 Vantage Drive Wilmington, NC 28401 Phone: 910.791.4000 Fax: 910.791.6286 www.cbhfhq.com	
FOR COMMON MARK 7/19/2019	
LT David Hartley via Email REVISION NO. 001 - 05/23/19	
P/W/ M. DUBS/KDB BRANCH BRANCH C-107 CHECK ENGINEER EJA FILE PRODUCTION HP-1	
DEPARTMENT OF THE NAVY NAVAL FACILITIES ENGINEERING COMMAND NAVAL FACILITIES ENGINEERING COMMAND - MID-ATLANTIC NAVAL STATION, NORFOLK, VIRGINIA CAMP LEJEUNE, N.C. U.S. MARINE CORPS REPLACE BOILERS AND INSTALL REHEAT COILS - NH100 NAVAL HOSPITAL PARTIAL MECHANICAL HVAC DEMOLITION PLAN - LEVEL 1 - AREA F2	
SCALE: AS NOTED EXPROJEST NO.: CONSTRUCTION NO.: NAVFAC DRAWING NO.: 12790413 SHEET 14 OF 156 MD101-F2 DRAWING REVISION: 31 JANUARY 2017	

PARTIAL PLAN - LEVEL 1 - AREA G2
SCALE: 1/8"=1'-0"



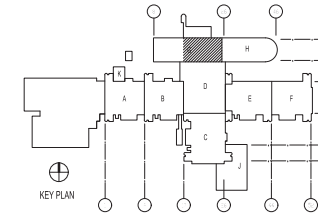
KEYED NOTES

- ① REMOVE AND DISPOSE OF EXISTING VAV BOX INCLUDING CONTROLS AND HANGARS. DEMOLISH DUCT TO EXTENT SHOWN.
 - ② REMOVE AND DISPOSE OF EXISTING VAV BOX INCLUDING CONTROLS AND HANGARS. DEMOLISH DUCT AND DIFFUSERS TO EXTENT SHOWN.
 - ③ REMOVE AND DISPOSE OF EXISTING VAV BOX INCLUDING CONTROLS AND HANGARS. DEMOLISH DUCT TO EXTENT SHOWN. CAP TAKE OFF DUCT NEAR MAIN.
 - ④ REMOVE AND DISPOSE OF EXISTING DUCT TO EXTENT SHOWN.
- * NOTES ABOVE NOT INDICATED ON ALL PLANS.

GENERAL NOTES

1. CONTRACTOR SHALL REPAIR ALL RATED WALL PENETRATIONS NOT RE-USED FOR NEW INSTALLATIONS.

KEY PLAN



GRAPHIC SCALE



DATE	05/23/19
ISSUED FOR CONSTRUCTION	0
DESCRIPTION	
REV	

05/23/19

CBHF
Engineers, PLLC
2248 Vantage Drive
Wilmington, NC 28401
Phone: 910.791.4000
Fax: 910.791.5289
www.cbhfhq.com

APPROVED FOR CONSTRUCTION

FOR COMMENT MARK 7/19/2019

REVIEW

LT David Hartley via Email
REVISION ID: 001 - 05/23/19

DES: 100 LOW WID LOW 100

PLAN: DWG/REV

BRANCH BRANCH: C-172

ENTRY ENGINEER: EJA

FILE PRODUCTION: HPV

DEPARTMENT OF THE NAVY
NAVAL FACILITIES ENGINEERING COMMAND
NAVAL FACILITIES ENGINEERING COMMAND - MID-ATLANTIC
NAVAL STATION, NORFOLK, VIRGINIA

U.S. MARINE CORPS
CAMP LEJEUNE, N.C.
REPLACE BOILERS AND INSTALL REHEAT
COILS - NH100 NAVAL HOSPITAL
PARTIAL MECHANICAL HVAC DEMOLITION PLAN
- LEVEL 1 - AREA G2

SCALE: AS NOTED

EXPROJEKT NO.:

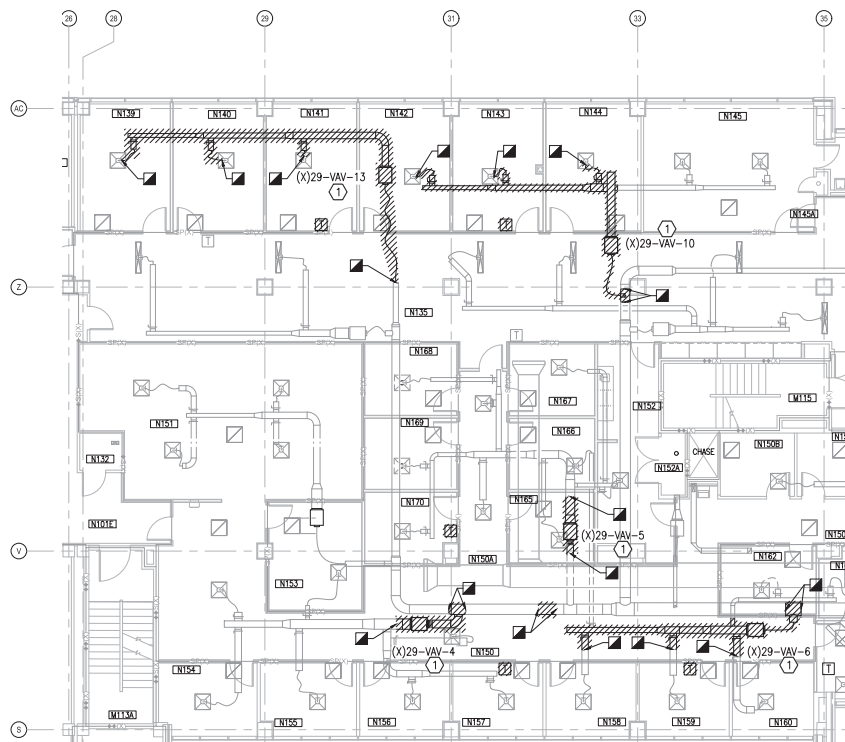
CONSTRUCTION CONTROL NO.:

NAVFAC DRAWING NO.: 2730415

SHEET: 15 OF 156

MD101-G2

DRAWING REVISION: 31 JANUARY 2017



PARTIAL PLAN - LEVEL 1 - AREA H1
SCALE: 1/8" = 1'-0"



KEYED NOTES

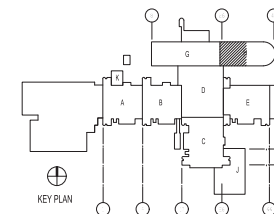
- ① REMOVE AND DISPOSE OF EXISTING VAV BOX INCLUDING CONTROLS AND HANGARS. DEMOLISH DUCT TO EXTENT SHOWN.
- ② REMOVE AND DISPOSE OF EXISTING VAV BOX INCLUDING CONTROLS AND HANGARS. DEMOLISH DUCT AND DIFFUSERS TO EXTENT SHOWN.
- ③ REMOVE AND DISPOSE OF EXISTING VAV BOX INCLUDING CONTROLS AND HANGARS. DEMOLISH DUCT TO EXTENT SHOWN. CAP TAKE OFF DUCT NEAR MAIN.
- ④ REMOVE AND DISPOSE OF EXISTING DUCT TO EXTENT SHOWN.

* NOTES ABOVE NOT INDICATED ON ALL PLANS.

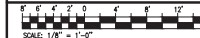
GENERAL NOTES

1. CONTRACTOR SHALL REPAIR ALL RATED WALL PENETRATIONS NOT RE-USED FOR NEW INSTALLATIONS.

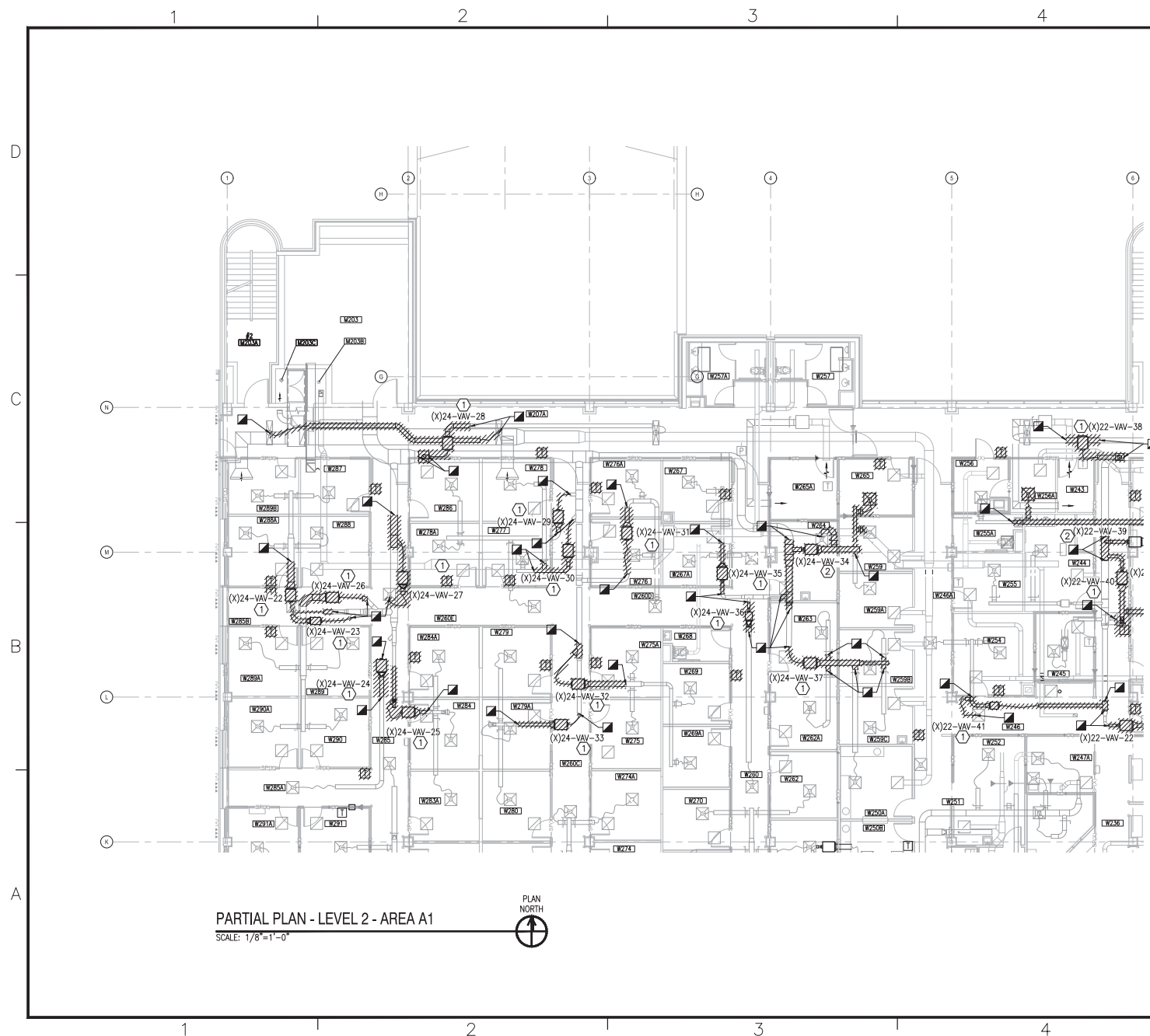
KEY PLAN



GRAPHIC SCALE



DATE	05/23/19
DESCRIPTION	ISSUED FOR CONSTRUCTION
BY	0
CBHF Engineers, PLLC 2248 Yallop Drive Wilmington, NC 28401 Phone: 910.791.4000 Fax: 910.791.5289 www.cbhfw.com	
APPROVED FOR COMMENT DATE 7/19/2019 REVISION LT David Hartley via Email REVISION NO. 001 - 05/23/19 ISSUED FOR CONSTRUCTION PL/PM: DWS/KDB BRANCH: BRANCH CHECKED: EJA FILED: HPV	
DEPARTMENT OF THE NAVY NAVAL FACILITIES ENGINEERING COMMAND NAVAL STATION, WASHINGTON, D.C. U.S. MARINE CORPS CAMP LEBLANC, N.C. REPLACE BOILERS AND INSTALL REHEAT COILS - NH100 NAVAL HOSPITAL PARTIAL MECHANICAL HVAC DEMOLITION PLAN LEVEL 1 - AREA H1	
SCALE:	AS NOTED
EXHIBIT NO.:	
CONTRACT NO.:	
NAVFAC DRAWING NO.:	12790416
SHEET:	17 OF 156
MD101-H1 <small>DRAWING REVISION: 21 JANUARY 2017</small>	



KEYED NOTES

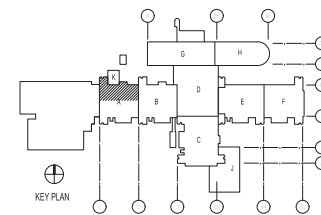
- ① REMOVE AND DISPOSE OF EXISTING VAN BOX INCLUDING CONTROLS AND HANGARS. DEMOLISH DUCT TO EXTENT SHOWN.
- ② REMOVE AND DISPOSE OF EXISTING VAN BOX INCLUDING CONTROLS AND HANGARS. DEMOLISH DUCT AND DIFFUSERS TO EXTENT SHOWN.
- ③ REMOVE AND DISPOSE OF EXISTING VAN BOX INCLUDING CONTROLS AND HANGARS. DEMOLISH DUCT TO EXTENT SHOWN. CAP TAKE OFF DUCT NEAR MAIN.
- ④ REMOVE AND DISPOSE OF EXISTING DUCT TO EXTENT SHOWN.

* NOTES ABOVE NOT INDICATED ON ALL PLANS.

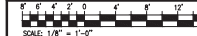
GENERAL NOTES

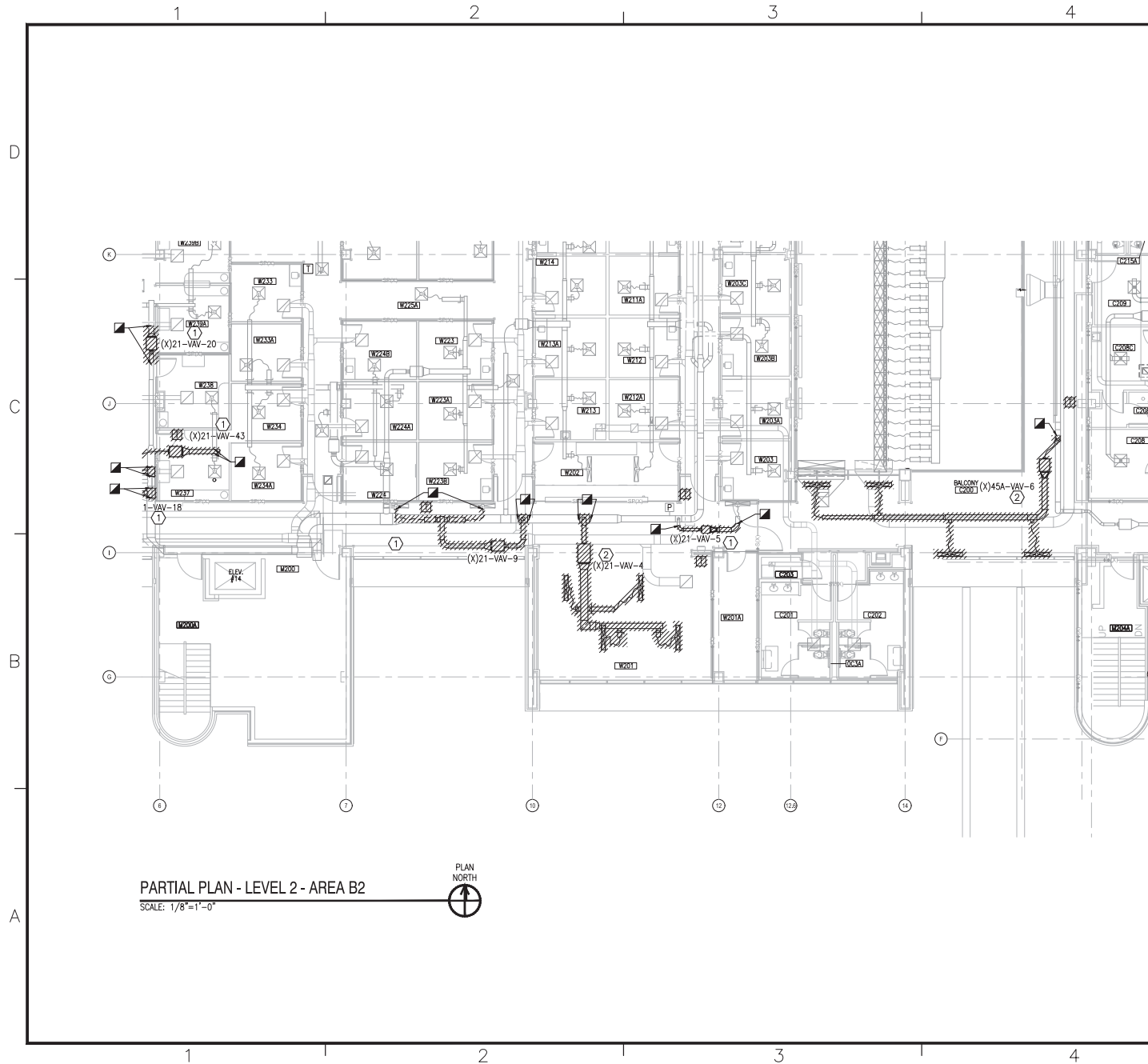
1. CONTRACTOR SHALL REPAIR ALL RATED WALL PENETRATIONS NOT RE-USED FOR NEW INSTALLATIONS.

KEY PLAN



GRAPHIC SCALE

[illegible]



KEYED NOTES

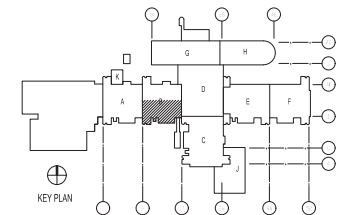
- ① REMOVE AND DISPOSE OF EXISTING VAV BOX INCLUDING CONTROLS AND HANGARS. DEMOLISH DUCT TO EXTENT SHOWN.
- ② REMOVE AND DISPOSE OF EXISTING VAV BOX INCLUDING CONTROLS AND HANGARS. DEMOLISH DUCT AND DIFFUSERS TO EXTENT SHOWN.
- ③ REMOVE AND DISPOSE OF EXISTING VAV BOX INCLUDING CONTROLS AND HANGARS. DEMOLISH DUCT TO EXTENT SHOWN. CAP TAKE OFF DUCT NEAR MAIN.
- ④ REMOVE AND DISPOSE OF EXISTING DUCT TO EXTENT SHOWN.

* NOTES ABOVE NOT INDICATED ON ALL PLANS.

GENERAL NOTES

1. CONTRACTOR SHALL REPAIR ALL RATED WALL PENETRATIONS NOT RE-USED FOR NEW INSTALLATIONS.

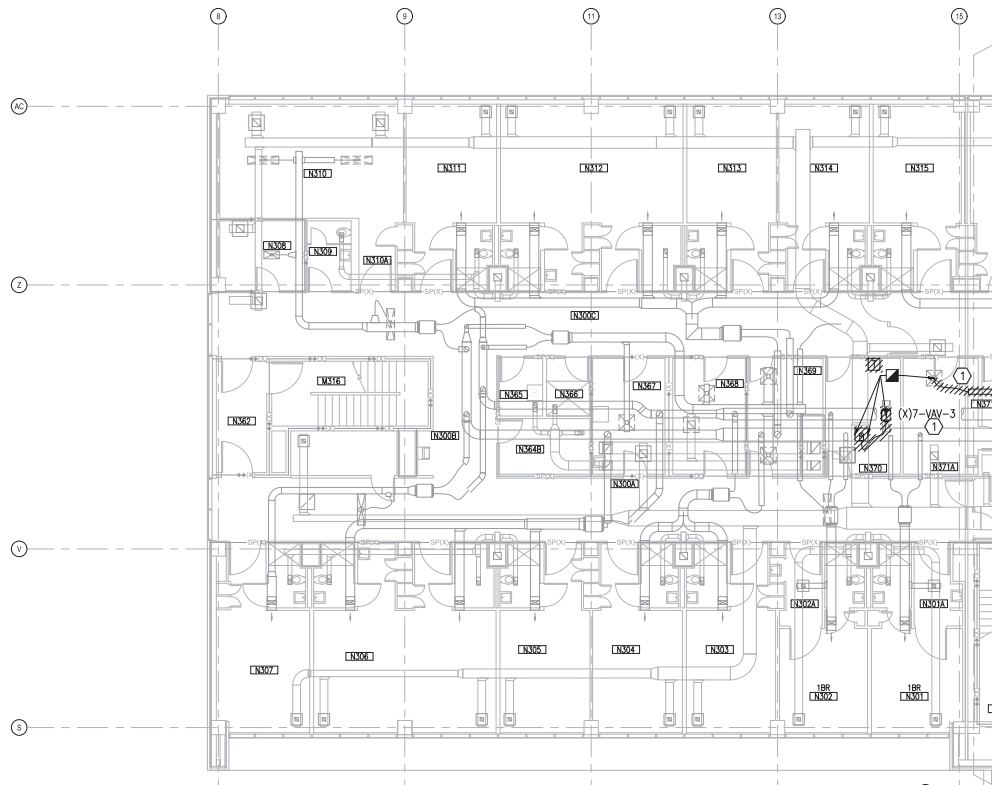
KEY PLAN



GRAPHIC SCALE



DATE	05/23/19
DESCRIPTION	ISSUED FOR CONSTRUCTION
BY	0
CBHF Engineers, PLLC 2248 Vantage Drive Wilmington, NC 28401 Phone: 910.791.4000 Fax: 910.791.6389 www.cbhfhq.com	
FOR CORRECTION MARK 7/19/2019 BY: [Signature] LT David Hartley via Email REVISION NO. 001 - 05/23/19 CDR WTD LOW WTD LOW 100 PLAN DWS/KDB BRANCH BRANCH C-172 CHART ENGINEER EJA FILE PROJECT HPV	
DEPARTMENT OF THE NAVY NAVAL FACILITIES ENGINEERING COMMAND - MID-ATLANTIC NAVAL STATION, NORFOLK, VIRGINIA U.S. MARINE CORPS CAMP LEJEUNE, N.C. REPLACE BOILERS AND INSTALL REHEAT COILS - NH100 NAVAL HOSPITAL PARTIAL MECHANICAL HVAC DEMOLITION PLAN - LEVEL 2 - AREA B2	
SCALE:	AS NOTED
PROJECT NO.:	
CONTRACT NO.:	
NAVFAC DRAWING NO.:	2790421
SHEET:	22 OF 156
MD102-B2	
DRAWING REVISION: 31 JANUARY 2017	



PLAN
NORTH

KEYED NOTES

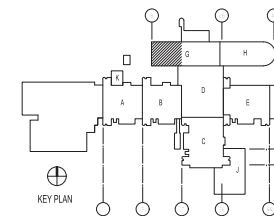
- ① REMOVE AND DISPOSE OF EXISTING VAV BOX INCLUDING CONTROLS AND HANGARS. DEMOLISH DUCT TO EXTENT SHOWN.
- ② REMOVE AND DISPOSE OF EXISTING VAV BOX INCLUDING CONTROLS AND HANGARS. DEMOLISH DUCT AND DIFFUSERS TO EXTENT SHOWN.
- ③ REMOVE AND DISPOSE OF EXISTING VAV BOX INCLUDING CONTROLS AND HANGARS. DEMOLISH DUCT TO EXTENT SHOWN. CAP TAKE OFF DUCT NEAR MAIN.
- ④ REMOVE AND DISPOSE OF EXISTING DUCT TO EXTENT SHOWN.

* NOTES ABOVE NOT INDICATED ON ALL PLANS.

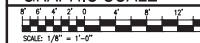
GENERAL NOTES

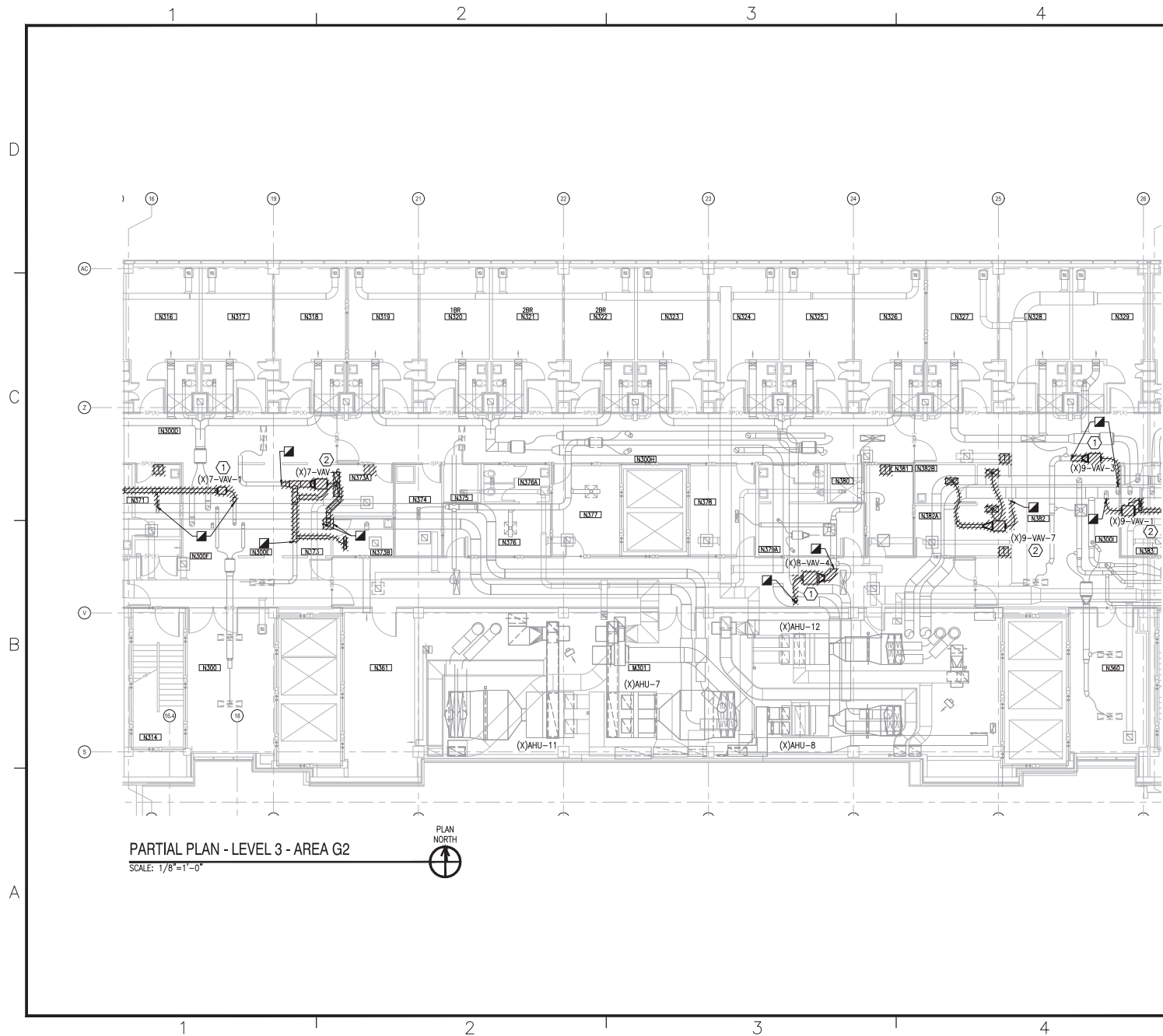
1. CONTRACTOR SHALL REPAIR ALL RATED WALL PENETRATIONS NOT RE-USED FOR NEW INSTALLATIONS.

KEY PLAN



GRAPHIC SCALE

[illegible]



KEYED NOTES

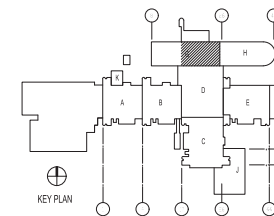
- ① REMOVE AND DISPOSE OF EXISTING VAV BOX INCLUDING CONTROLS AND HANGARS. DEMOLISH DUCT TO EXTENT SHOWN.
- ② REMOVE AND DISPOSE OF EXISTING VAV BOX INCLUDING CONTROLS AND HANGARS. DEMOLISH DUCT AND DIFFUSERS TO EXTENT SHOWN.
- ③ REMOVE AND DISPOSE OF EXISTING VAV BOX INCLUDING CONTROLS AND HANGARS. DEMOLISH DUCT TO EXTENT SHOWN. CAP TAKE OFF DUCT NEAR MAIN.
- ④ REMOVE AND DISPOSE OF EXISTING DUCT TO EXTENT SHOWN.

* NOTES ABOVE NOT INDICATED ON ALL PLANS.

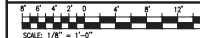
GENERAL NOTES

1. CONTRACTOR SHALL REPAIR ALL RATED WALL PENETRATIONS NOT RE-USED FOR NEW INSTALLATIONS.

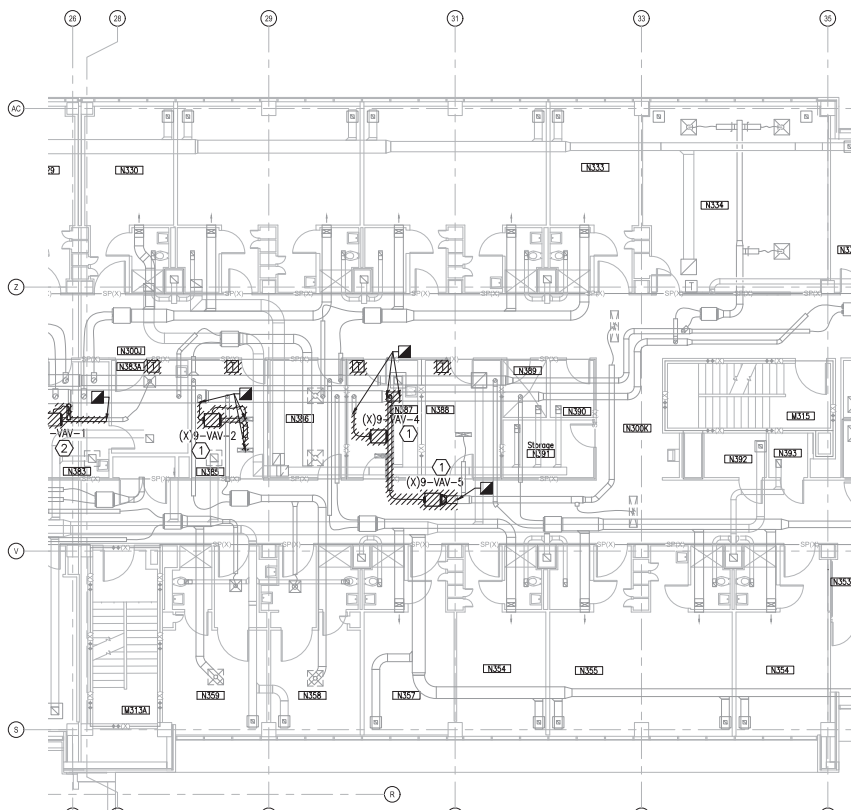
KEY PLAN



GRAPHIC SCALE



DATE	05/23/19
ISSUED FOR CONSTRUCTION	0
DESCRIPTION	
BY	
APPV	
CBHF Engineers, PLLC 2240 Yallop Drive Wilmington, NC 28401 Phone: 910.791.4000 Fax: 910.791.6286 www.cbhfhg.com	
FOR COMMON MARK 7/19/2019 REVISION LT David Hartley via Email REVISION TO: 001 - 05/23/19 CDR WTD Low WTD Low 100 PLM/DW/KDB BRANCH MANAGER: CAJ DRY ENGINEER: EJA FIRE PROTECTION: HPV	
DEPARTMENT OF THE NAVY NAVAL FACILITIES ENGINEERING COMMAND NAVAL FACILITIES ENGINEERING COMMAND - MIDATLANTIC NAVAL STATION, NORFOLK, VIRGINIA U.S. MARINE CORPS CAMP LEJEUNE, N.C. REPLACE BOILERS AND INSTALL REHEAT COILS - NH100 NAVAL HOSPITAL PARTIAL MECHANICAL HVAC DEMOLITION PLAN - LEVEL 3 - AREA G2	
SCALE:	AS NOTED
PROJECT NO.:	
CONTRACT CENTER NO.:	
NAVFAC DRAWING NO.:	12790423
SHEET:	24 OF 136
MD103-G2	
DRAWING REVISION: 21 JANUARY 2017	



PARTIAL PLAN - LEVEL 3 - AREA H1
SCALE: 1/8"=1'-0"



KEYED NOTES

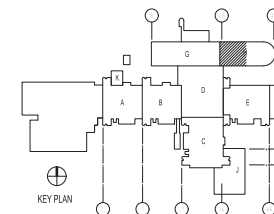
- ① REMOVE AND DISPOSE OF EXISTING VAV BOX INCLUDING CONTROLS AND HANGARS. DEMOLISH DUCT TO EXTENT SHOWN.
- ② REMOVE AND DISPOSE OF EXISTING VAV BOX INCLUDING CONTROLS AND HANGARS. DEMOLISH DUCT AND DIFFUSERS TO EXTENT SHOWN.
- ③ REMOVE AND DISPOSE OF EXISTING VAV BOX INCLUDING CONTROLS AND HANGARS. DEMOLISH DUCT TO EXTENT SHOWN. CAP TAKE OFF DUCT NEAR MAIN.
- ④ REMOVE AND DISPOSE OF EXISTING DUCT TO EXTENT SHOWN.

* NOTES ABOVE NOT INDICATED ON ALL PLANS.

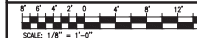
GENERAL NOTES

1. CONTRACTOR SHALL REPAIR ALL RATED WALL PENETRATIONS NOT RE-USED FOR NEW INSTALLATIONS.

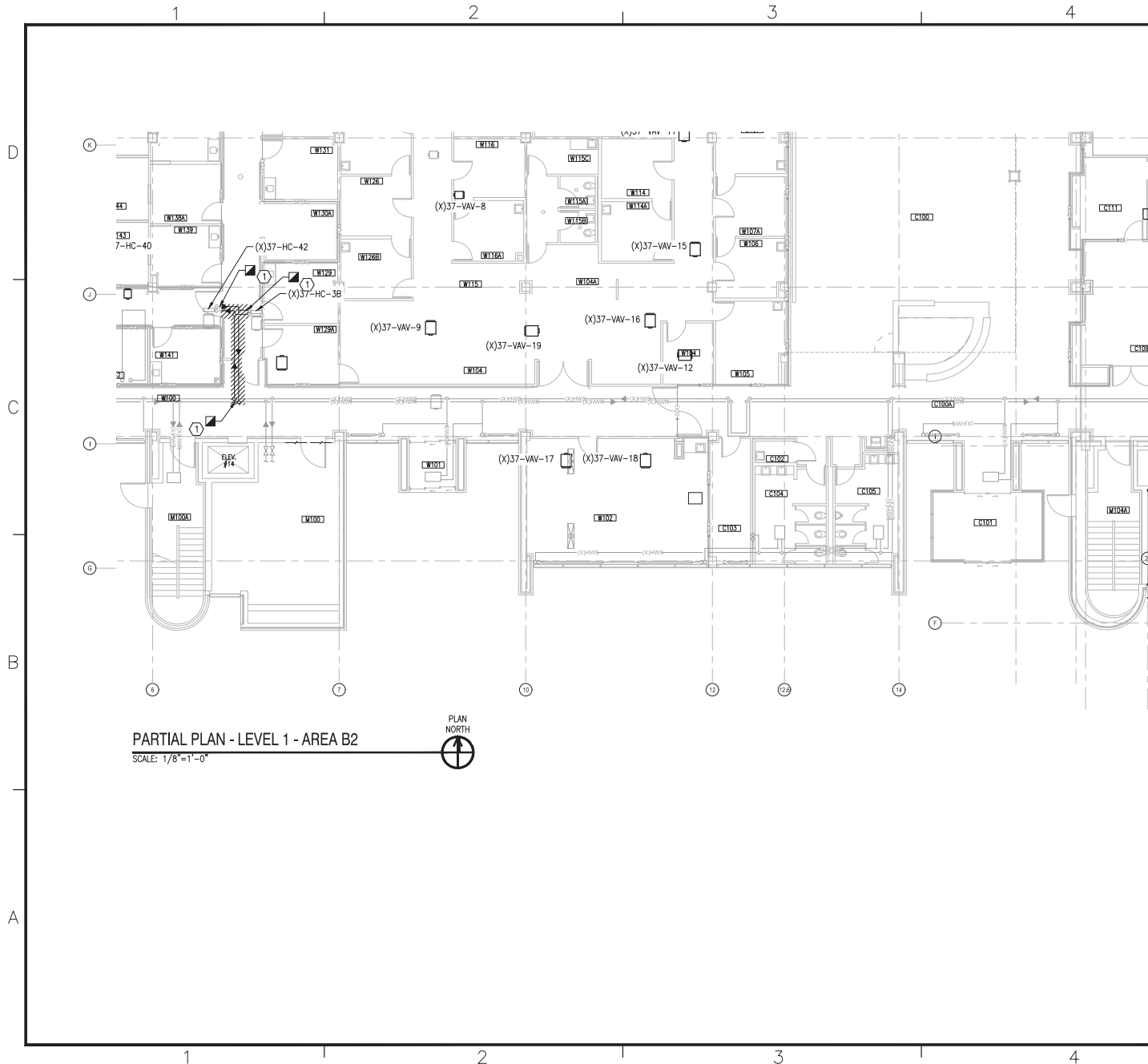
KEY PLAN



GRAPHIC SCALE



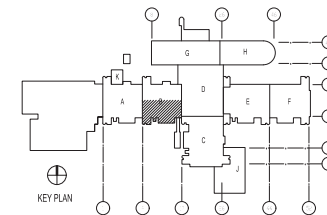
DATE	05/23/19
DESCRIPTION	ISSUED FOR CONSTRUCTION
BY	0
CBHF Engineers, PLLC 2240 Yallop Drive Wilmington, NC 28401 Phone: 910.791.4000 Fax: 910.791.6286 www.cbhfhq.com	
APPROVED:	
FOR COMMENT: 7/19/2019	
REVISION:	
LT David Hartley via Email REVISION: 0 000 18/07/2019	
DES: WTD LOW WTD LOW 100	
PL/WH: DWS/KDS	
BRANCH: BRANCH	
DESIGNED: DESIGNED	
FILE: PROJECT	
FILE: PROJECT	
DEPARTMENT OF THE NAVY NAVAL FACILITIES ENGINEERING COMMAND - MIDATLANTIC NAVAL STATION, NORFOLK, VIRGINIA U.S. MARINE CORPS CAMP LEBLANC, N.C. REPLACE BOILERS AND INSTALL REHEAT COILS - NH100 NAVAL HOSPITAL PARTIAL MECHANICAL HVAC DEMOLITION PLAN - LEVEL 3 - AREA H1	
SCALE: AS NOTED	
EPROJ: 103	
CONSTRUCTION: 103	
NAVFAC DRAWING NO.: 12790424	
SHEET: 25 OF 126	
MD103-H1	
DRAWING REVISION: 21 JANUARY 2017	



KEYED NOTES

- REMOVE AND DISPOSE OF HEATING HOT WATER SUPPLY AND RETURN PIPING TO EXTENT SHOWN. CAP (X)TAKE-OFFS AT MAINS. PROTECT PIPING TOWARDS (X)HOT WATER COILS FOR RECONNECTION.

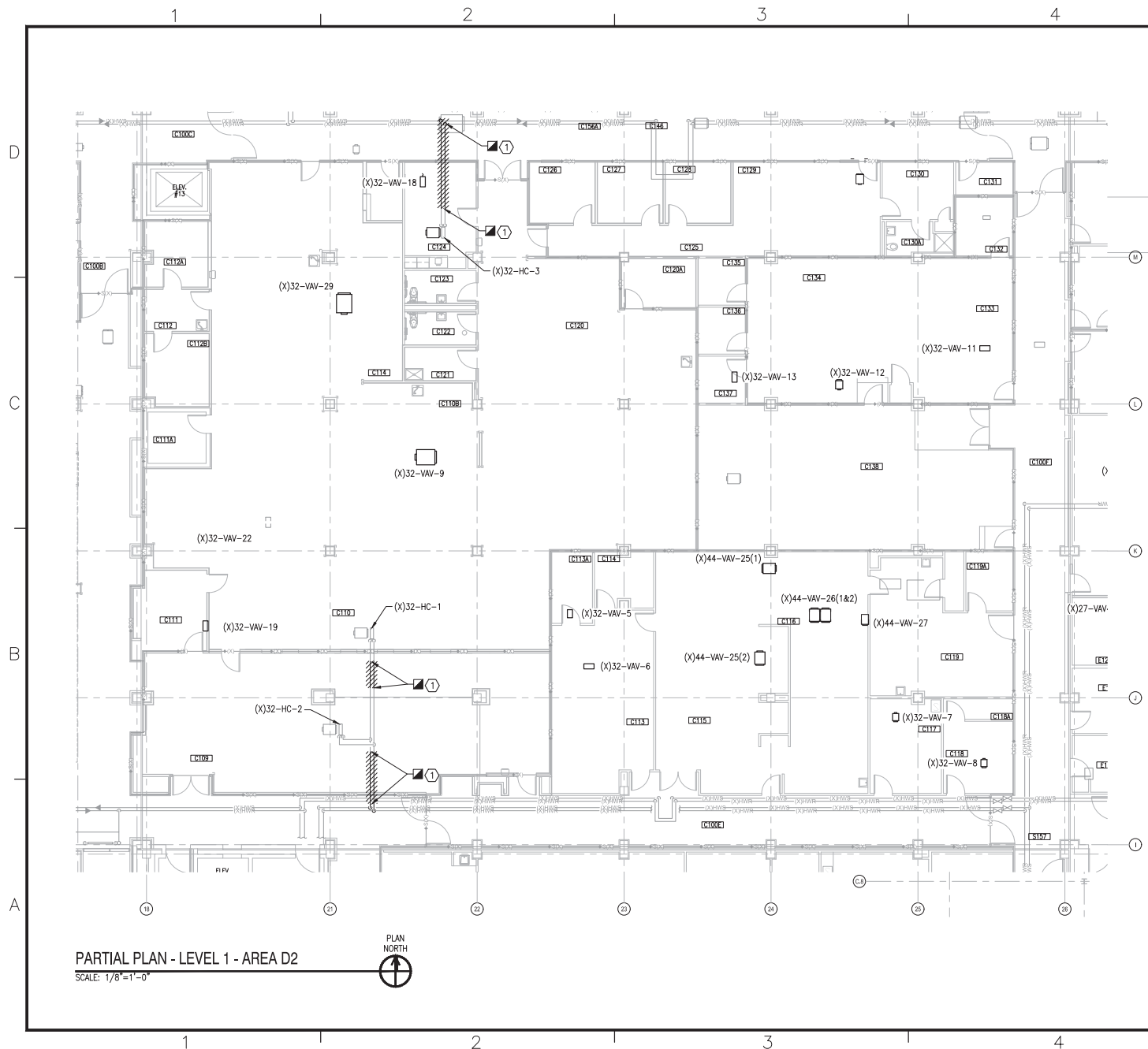
KEY PLAN



GRAPHIC SCALE



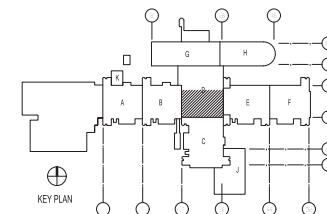
DATE	05/23/19
DESCRIPTION	ISSUED FOR CONSTRUCTION
BY	0
CBHF Engineers, PLLC 2240 Yallop Drive Wilmington, NC 28401 Phone: 910.791.4000 Fax: 910.791.5200 www.cbhfhq.com	
FOR COMMENT MARK 7/19/2019	
LT David Hartley via Email REVISION NO. 001 - 10/20/19	
100% KDC LOW KDC LOW 100%	
PLAN DWG/KDB	
BRANCH BRANCH CA72	
DRY ENGINEER EJA	
FIRE PROTECTION HPV	
DEPARTMENT OF THE NAVY NAVAL FACILITIES ENGINEERING COMMAND - MID-ATLANTIC NAVAL STATION, NORFOLK, VIRGINIA CAMP LEBLANC, N.C. U.S. MARINE CORPS REPLACE BOILERS AND INSTALL REHEAT COILS - NH100 NAVAL HOSPITAL PARTIAL MECHANICAL PIPING DEMOLITION PLAN - LEVEL 1 - AREA B2	
SCALE: AS NOTED	
EXHIBIT NO.:	
CONSTRUCTION NO.:	
NAVFAC DRAWING NO.: 2790429	
SHEET 35 OF 156	
MPD101-B2	
DRAWING REVISION: 31 JANUARY 2017	



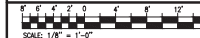
KEYED NOTES

- ① REMOVE AND DISPOSE OF HEATING HOT WATER SUPPLY AND RETURN PIPING TO EXTENT SHOWN. CAP (X)TAKE-OFFS AT MAINS. PROTECT PIPING TOWARDS (X)HOT WATER COILS FOR RECONNECTION.

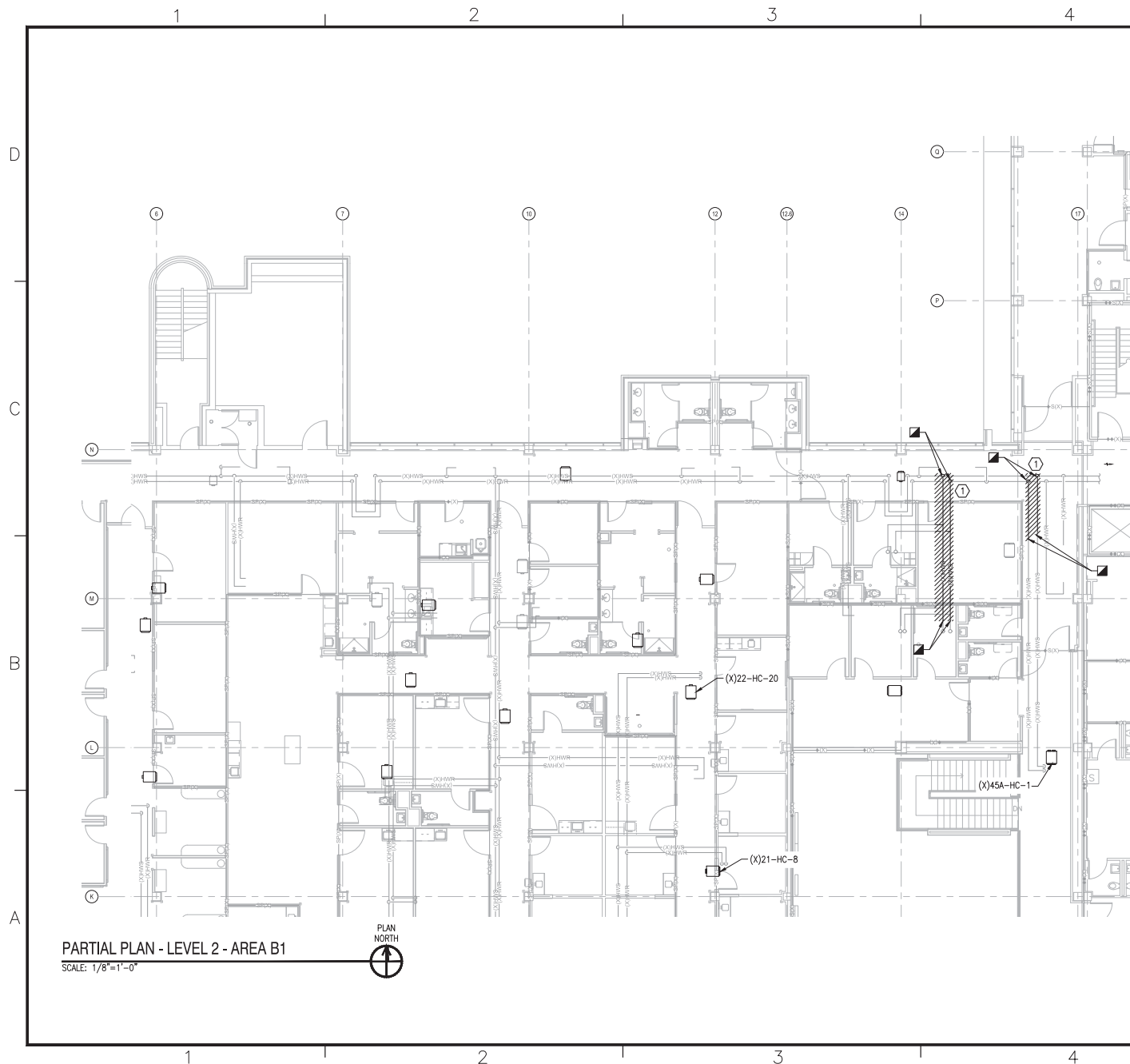
KEY PLAN



GRAPHIC SCALE



DATE	05/23/19
ISSUED FOR CONSTRUCTION	0
DESCRIPTION	
CBHF Engineers, PLLC 2240 Yallop Drive Wilmington, NC 28401 Phone: 910.791.4000 Fax: 910.791.5280 www.cbhfhg.com	
FOR COMMENT DATE 7/19/2019	
REVISION LT David Hartley via Email REVISION TO: 001 - 10/20/18 CDR KWC LOW RMC FOR 100 PLAN DWS/KDB BRANCH BRANCH C-172 DRY ENGINEER EJA FIRE PROTECTION HPV	
DEPARTMENT OF THE NAVY NAVAL FACILITIES ENGINEERING COMMAND - MIDATLANTIC NAVAL STATION, NORFOLK, VIRGINIA U.S. MARINE CORPS CAMP LEJEUNE, N.C. REPLACE BOILERS AND INSTALL REHEAT COILS - NH100 NAVAL HOSPITAL PARTIAL MECHANICAL PIPING DEMOLITION PLAN - LEVEL 1 - AREA D2	
SCALE:	AS NOTED
PROJECT NO.:	
CONTRACT NO.:	
NAVFAC DRAWING NO.:	2790431
SHEET	32 OF 156
MPD101-D2	
DRAWING REVISION: 31 JANUARY 2017	



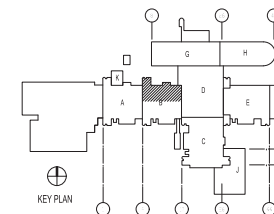
KEYED NOTES

- ① REMOVE BRANCH HYDRONIC PIPING CONNECTION, ASSOCIATED FITTINGS, AND/OR VALVES. CAP AND PROTECT DISCONNECTED BRANCH PIPING ROUTE FOR FUTURE CONNECTION.

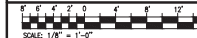
GENERAL NOTES

1. PROTECT ALL PENETRATIONS THROUGH SMOKE AND FIRE RATED WALLS IN ACCORDANCE WITH NFPA 90A.

KEY PLAN



GRAPHIC SCALE



DATE	05/23/19
ISSUED FOR CONSTRUCTION	0
DESCRIPTION	
CBHF Engineers, PLLC 2246 Yallop Drive Wilmington, NC 28401 Phone: 910.791.4000 Fax: 910.791.6389 www.cbhfengineers.com	
LT David Hartley via Email REVISION NO. 001 ESD: KWC LOW RISK FOR 100 PL/PM: DWS/KDB BRANCH BRANCH: CADA FIRST ENGINEER: EJA FILE PRODUCTION: HPV	
DEPARTMENT OF THE NAVY NAVAL FACILITIES ENGINEERING COMMAND NAVAL FACILITIES ENGINEERING COMMAND - MIDATLANTIC NAVAL STATION, NORFOLK, VIRGINIA U.S. MARINE CORPS CAMP LEBLANC, N.C. REPLACE BOILERS AND INSTALL REHEAT COILS - NH100 NAVAL HOSPITAL PARTIAL MECHANICAL PIPING DEMOLITION PLAN - LEVEL 2 - AREA B1	
SCALE:	AS NOTED
PROJECT NO.:	
CONTRACT, CONTROL NO.:	
NAVFAC DRAWING NO.:	12790434
SHEET NO. OF 156	
MPD102-B1	
DRAFTING REVISION: 31 JANUARY 2017	