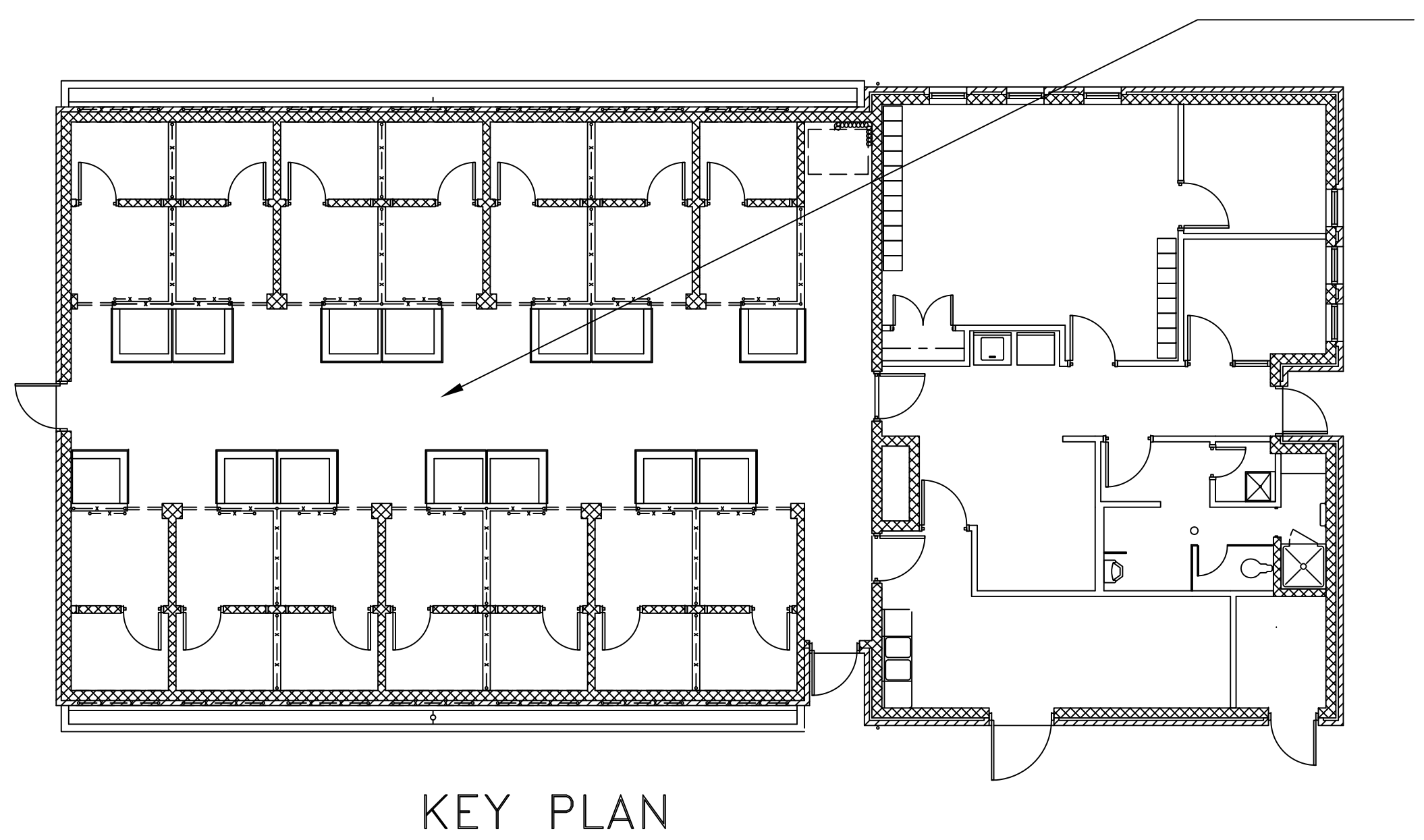
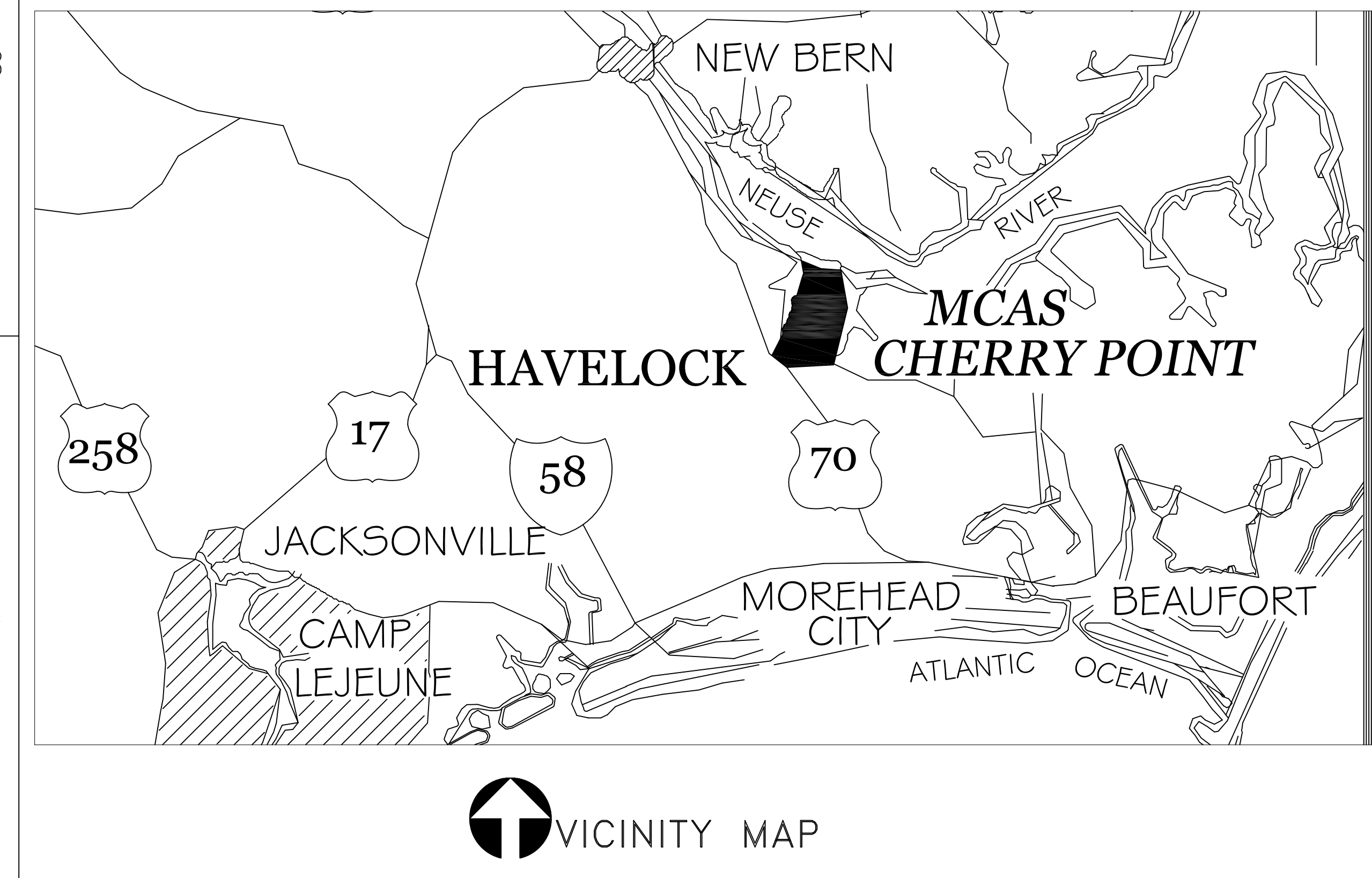
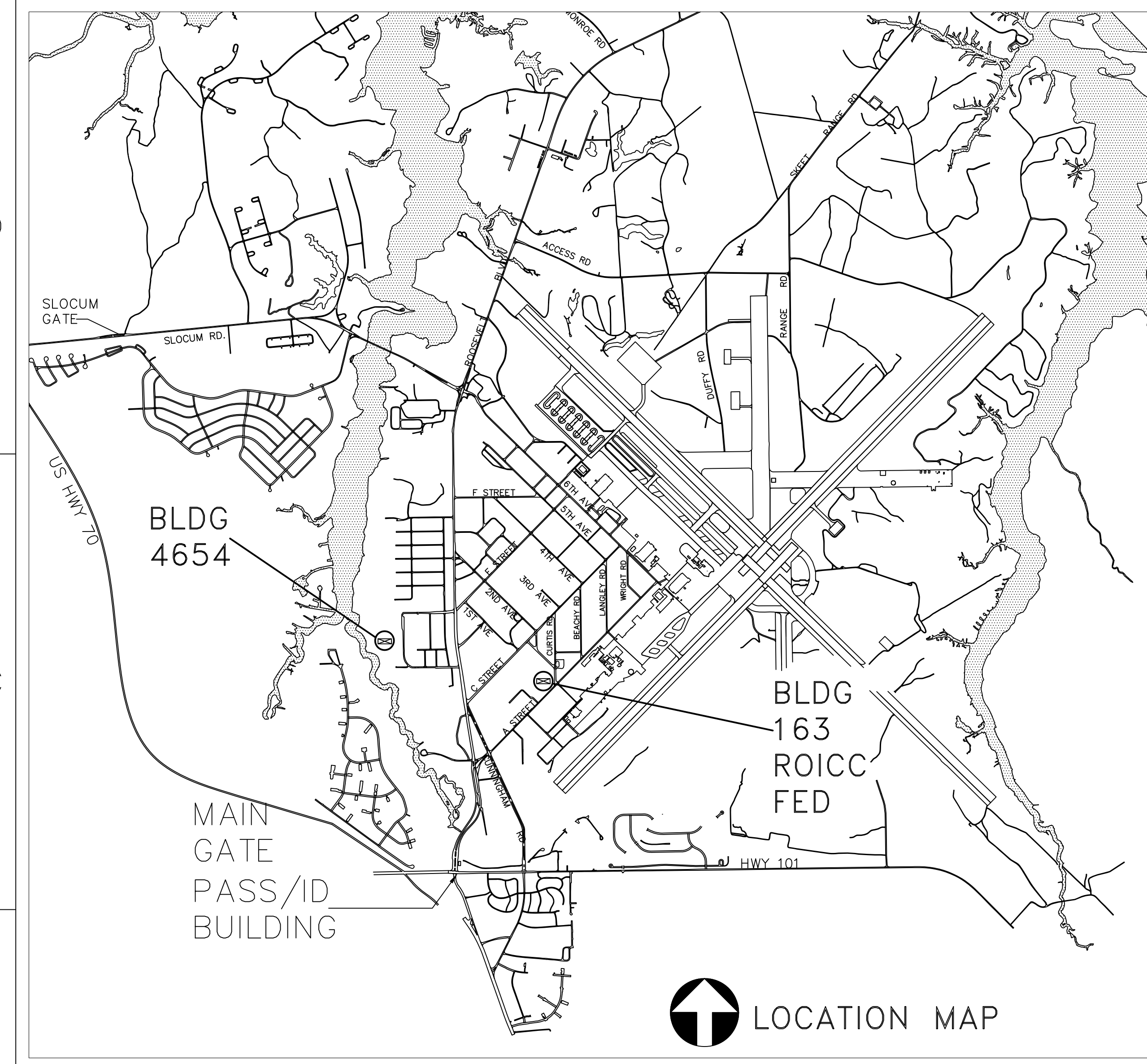



# MODIFY HVAC SYSTEM AT MWD KENNEL, BLDG. 4654 MARINE CORPS AIR STATION CHERRY POINT, NORTH CAROLINA WO# 6778955

## INDEX OF DRAWINGS

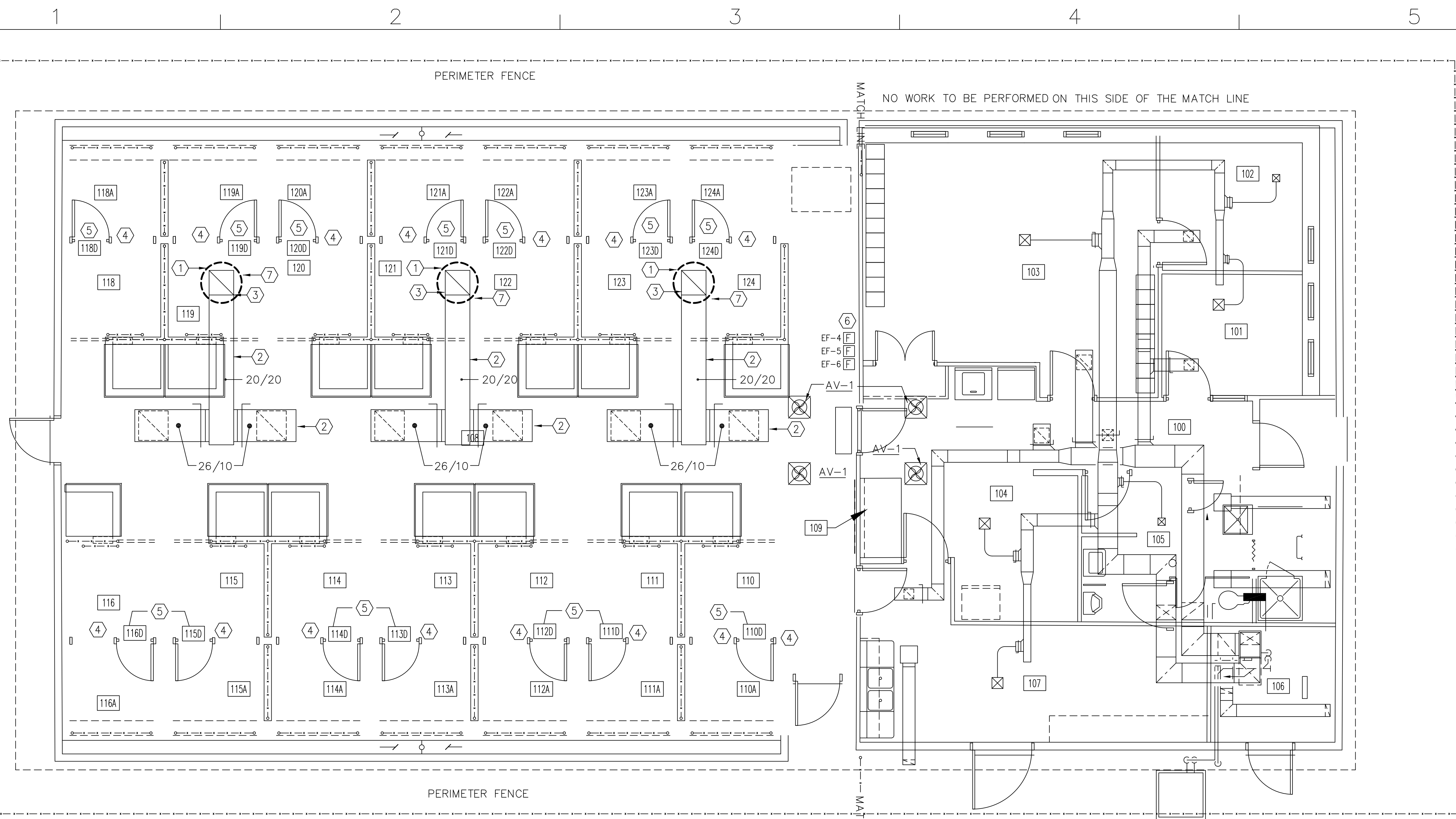
NAVFAC NO.	SHEET NO.	TITLE
12782351	G-001	TITLE SHEET
12782352	M-001	LEGEND, ABBREVIATIONS & GENERAL NOTES
12782353	MD-101	MECHANICAL DEMOLITION FLOOR PLAN
12782354	M-101	MECHANICAL NEW WORK FLOOR PLAN
12782355	M-102	EXTERIOR NEW WINDOW SECURITY GRATES & EXH. FANS
12782356	M-103	KENNEL FENCE DEMO/NEW WORK NOTES & DETAILS
12782357	M-301	NEW WINDOW GRATES, DOOR SCHEDULE & DETAILS
12782358	M-501	MECHANICAL DETAILS
12782359	M-601	MECHANICAL SCHEDULES
12782360	E-101	UNDERGROUND ELECTRICAL CIRCUIT
12782361	E-102	ELECTRICAL DETAILS



AREA OF  
WORK  
KENNEL  
AREA

 DESIGNED & ENGINEERED BY: FACILITIES ENGINEERING	DATE: _____ DESCRIPTION: _____ STA. NO.: _____ APPR. _____
FINAL DESIGN	
APPROVED: _____ ACTIVITY - SATISFACTORY TO: _____ DATE: _____ APPROVED: _____ FOR EFD FOR COMMANDER NAVAC: _____ DATE: _____	
A/E: _____ EFD: _____ DESIGN: MHE DRAWN: MHE REVIEW: NAF OC: LPF CHIEF ARCH/ENGR: MHE PROJECT MANAGER: _____ FIRE PROTECTION: _____ BRANCH MANAGER: LPF DESIGN DIRECTOR: LPF	
DEPARTMENT OF THE NAVY NAVAL FACILITIES ENGINEERING COMMAND MARINE CORPS AIR STATION, CHERRY POINT, N.C. <b>MODIFY HVAC SYSTEM AT MWD KENNEL, BLDG. 4654</b> TITLE SHEET	
CODE ID. NO. 80091    SIZE: D SCALE: _____ FED. NO. _____ STA. PROJ. NO. 6778955 SPEC. NO. _____ CONSTR. CONTR. NO. _____ NAVFAC DRAWING NO. 12783251 SHEET 1 OF 11 <b>G-001</b> <small>DRAWING REVISION JULY 2003</small>	






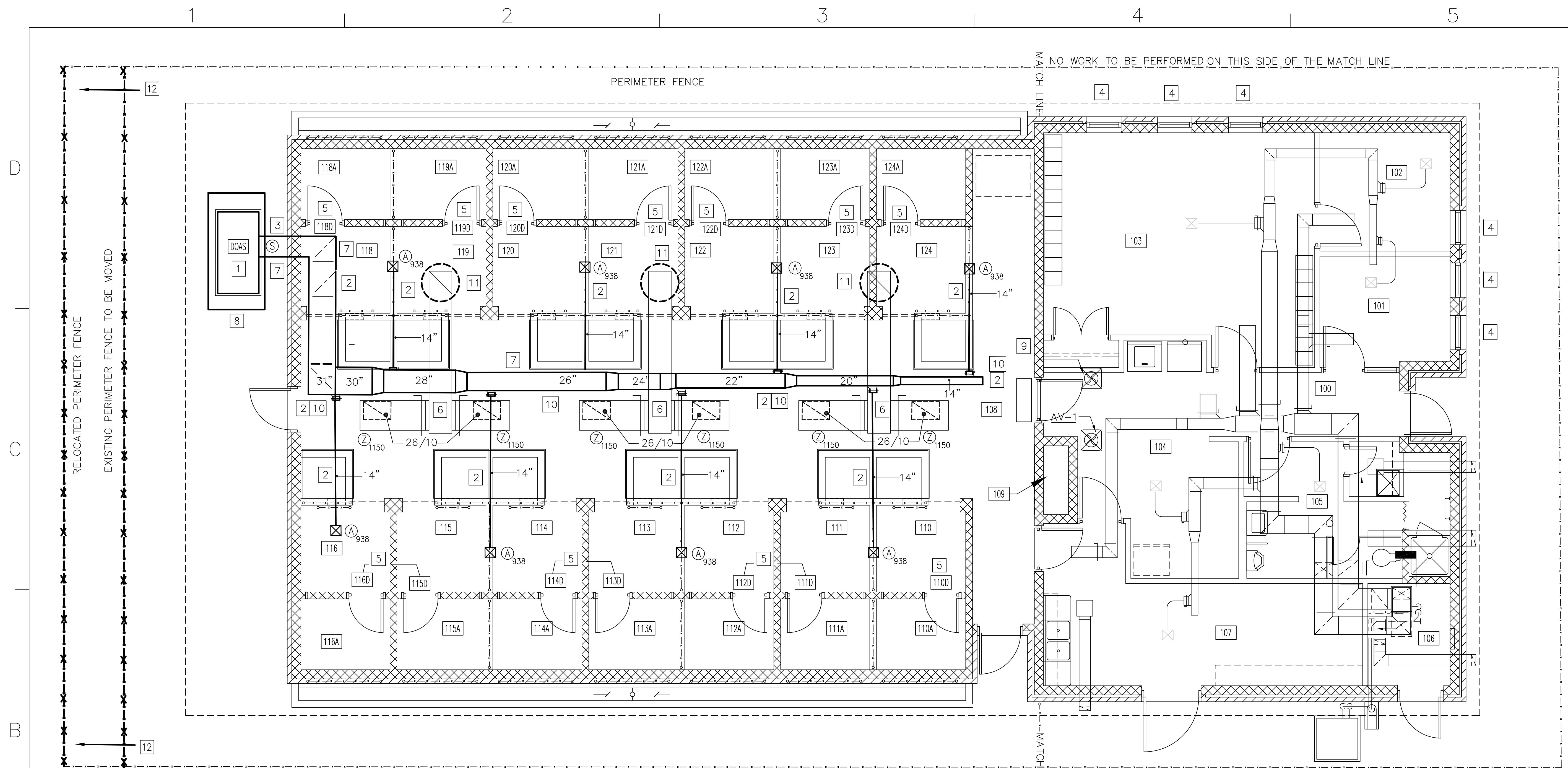
**DEMO FLOOR PLAN**  
SCALE: 1/4" = 1'-0"

**DEMO NOTES:**

- ① REMOVE EF-4,5,&6 FROM THE ROOF OF BUILDING AND PREPARE EXHAUST DUCT WHERE EXHAUST FANS WERE REMOVED FROM FOR NEW EXHAUST FANS.
- ② LEAVE THE INTERIOR DUCTWORK FOR THE EXHAUST FANS IN THE KENNEL AREA, AND THE EXHAUST FAN GRILLS IN THE CEILING OF THE DOG KENNEL TO BE RE-USED.
- ③ LEAVE THE EXHAUST FAN THROUGH THE ROOF DUCT AND PREPARE DUCT FOR NEW EXHAUST FANS. SEE DETAIL ON SHEET M-501.
- ④ CAP OFF ALL THE ALUMINUM FRESH AIR VENTS IN THE DOG KENNEL AREA WITH ALUMINUM COVERS. SEE DETAIL ON SHEET M-501.
- ⑤ REMOVE THE FIBERGLASS FLUSH DOORS FROM 110D THROUGH 124D IN EACH KENNEL AND PREPARE THE OPENINGS FOR THE NEW DOORS. THERE IS NOT A KENNEL 117.
- ⑥ LEAVE THE FAN CONTROLS AND DISCONNECTS FOR EXHAUST FANS 4, 5 & 6 FOR RE-USE WITH NEW FANS. WHERE SHOWN ON THIS DRAWING
- ⑦ LEAVE ALL ASSOCIATED WIRING AND CONTROLS FOR NEW EXHAUST FANS.
- ⑧ RELOCATE THE EXISTING PERIMETER FENCE. SEE DRAWING MD-101 & M-101.



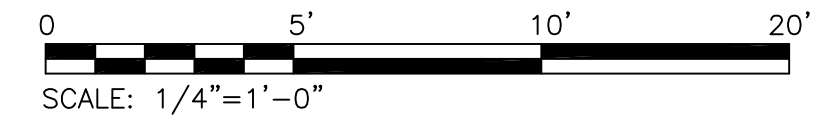
DATE	APPR
DESCRIPTION	SIN
DESIGNED & ENGINEERED BY: FACILITIES ENGINEERING  U.S. DEPARTMENT OF THE NAVY UNITED STATES MARINE CORPS <small>LET'S USE THIS SPACE FOR YOUR ADDRESS INFO.</small>	
<b>FINAL DESIGN</b>	
APPROVED	SEAL
ACTIVITY - SATISFACTORY TO	
DATE	APPROVED
FOR EFD FOR COMMANDER NAVFAC	
DATE	EFD
A/E	DESIGN MHE
	DRAWN MHE
	REVIEW NAH
	OC LPF
	CHEF ARCH/ENGR MHE
PROJECT MANAGER	MHE
FIRE PROTECTION	
BRANCH MANAGER	LPF
DESIGN DIRECTOR	LPF
DEPARTMENT OF THE NAVY NAVAL FACILITIES ENGINEERING COMMAND MARINE CORPS AIR STATION, CHERRY POINT, N.C. <b>MODIFY HVAC SYSTEM AT MWD KENNEL, BLDG. 4654</b> DEMOLITION FLOOR PLAN	
CODE ID. NO. 80091	SIZE D
SCALE: AS SHOWN	
FED. NO.	
STA. PROJ. NO. 6624802	
SPEC. NO.	
CONSTR. CONTR. NO.	
NAVFAC DRAWING NO. 12782353	
SHEET 3 OF 11	
<b>MD-101</b>	
<small>DRAWING REVISION JULY 2003</small>	



**NEW WORK FLOOR PLAN**  
 SCALE: 1/4" = 1'-0"

**NEW WORK NOTES:**

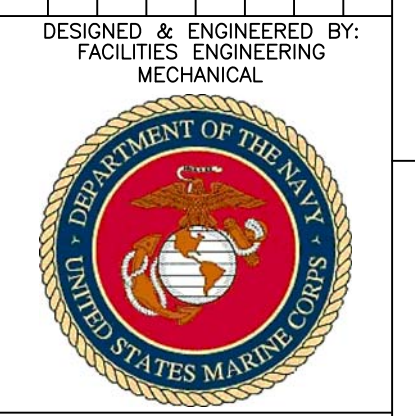
- 1 INSTALL NEW OUTDOOR AIR UNIT FOR THE KENNEL SECTION OF BUILDING 4654.
- 2 INSTALL NEW RECTANGULAR SUPPLY DUCTWORK ABOVE THE CEILING IN KENNEL AREA FOR THE NEW OUTDOOR AIR UNIT (DOAS).
- 3 CUT AN OPENING THROUGH THE WALL IN THE BACK RIGHT SIDE OF THE BUILDING TO CONNECT THE (DOAS) UNIT TO THE NEW DUCTWORK.
- 4 INSTALL (6) NEW SECURITY WINDOW GRATES FOR THE OFFICE AREA OF THE DOG KENNEL. SEE DETAILS ON SHEETS M-102 & M-301.
- 5 INSTALL (14) NEW HOLLOW METAL FLUSH DOORS FROM 110D THROUGH 124D WITH CANINE ACCESS WHERE THE DOORS WERE REMOVED. SEE DETAILS ON THIS SHEET AND SHEET M-301. NOTE THERE IS NO DOOR FOR 117.
- 6 CLEAN THE EXISTING RETURN DUCTWORK ABOVE THE CEILING, AND THE EXISTING BELOW THE CEILING RETURN GRILLES, SO THAT THEY CAN BE RE-USED.
- 7 INSTALL THE NEW RECTANGULAR SUPPLY DUCTWORK THROUGH THE WALL THEN GO ABOVE THE CEILING OF KENNEL 118, AND RUN NEW SUPPLY DUCTWORK ABOVE OR BESIDE THE RETURN DUCTWORK.
- 8 INSTALL A NEW CONCRETE PAD 16'FT LONG X 6'FT WIDE X 6" FOR THE NEW DEDICATED OUTSIDE AIR SYSTEM TO SIT ON.
- 9 INSTALL A NEW THERMOSTAT ON THE BRICK WALL IN THE KENNEL AREA BY THE DOOR LEADING INTO THE OFFICE AREA OF THE KENNEL.
- 10 RUN NEW SUPPLY DUCTWORK BETWEEN ROOF TRUSSES.
- 11 INSTALL THREE NEW EXHAUST FANS. THE EXHAUST FANS THAT WILL BE REPLACED WILL BE EF-4, EF-5, & EF-6.
- 12 MOVE EXISTING FENCE OVER 10FT FROM IT'S EXISTING LOCATION AND RECONNECT TO EXISTING FENCE.



	DATE
	APPROVED
<b>FINAL DESIGN</b>	
APPROVED ACTIVITY - SATISFACTORY TO DATE APPROVED FOR EFD FOR COMMANDER NAVAC DATE A/E DESIGN EFD DRAWN MHF MHF REVIEW NAH NAH CC LDF LDF CHIEF ARCH/ ENGR MHE PROJECT MANAGER MHE FIRE PROTECTION LDF BRANCH MANAGER LDF DESIGN DIRECTOR LDF	
DEPARTMENT OF THE NAVY MARINE CORPS AIR STATION, CHERRY POINT, N.C. <b>MODIFY HVAC SYSTEM AT MWD KENNEL, BLDG. 4654</b> MECHANICAL NEW WORK FLOOR PLAN	
CODE ID. NO. 80091	SIZE D
SCALE: AS SHOWN	
FED. NO.	
STA. PROJ. NO. 6778955	
SPEC. NO.	
CONSTR. CONTR. NO.	
NAVFAC DRAWING NO. 12782354	
SHEET 4 OF 11	
<b>M-101</b> <small>DRAWING REVISION JULY 2003</small>	



DATE	APPROVED
DESCRIPTION	SYMBOL

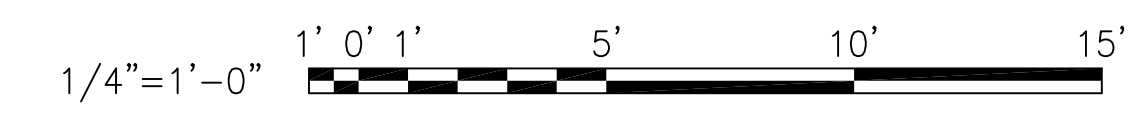


**FINAL DESIGN**

APPROVED	
ACTIVITY - SATISFACTORY TO	
DATE	
APPROVED	
FOR EFD FOR COMMANDER NAVAC	
DATE	
A/E	EFD
DESIGN	MHE
DRAWN	MHF
REVIEW	NAH
OC	LOP
CHEF	ARCH/ENGR
PROJECT MANAGER	MHE
FIRE PROTECTION	LOP
BRANCH MANAGER	LOP
DESIGN DIRECTOR	LOP

NAVAL FACILITIES ENGINEERING COMMAND  
 MARINE CORPS AIR STATION, CHERRY POINT, N.C.  
**MODIFY HVAC SYSTEM AT MWD  
 KENNEL, BLDG. 4654**  
 EXTERIOR NEW SECURITY WINDOW GRATES & EXHAUST FANS

CODE ID. NO. 80091	SIZE D
SCALE: AS SHOWN	
FED. PROJ. NO. 6778955	
SPEC. NO.	
CONSTR. CONTR. NO.	
NAVAC DRAWING NO. 12782355	
SHEET 5 OF 12	
<b>M-102</b>	
<small>DRAWING REVISION AUGUST 2002</small>	



GATE POST					
GATE LEAF WIDTH	GATE POST (O.D.)	FABRIC HEIGHT	"A" DIA.	"B" DEPTH	"C" POST EMBED.
3' TO 6'	2.785"	3' TO 5'	12"	38"	36"
		6' TO 9'	14"	42"	40"
		10' TO 12'	16"	46"	44"

LINE AND TERMINAL POSTS				
FABRIC HEIGHT	TYPE POST	"A" DIA.	"B" DEPTH	"C" POST EMBEDMENT
6'-0" TO 9'-0"	LINE	12"	38"	36"
	TERMINAL	12"	38"	36"

NOTE:  
TERMINAL POSTS INCLUDE END, CORNER AND PULL POSTS.

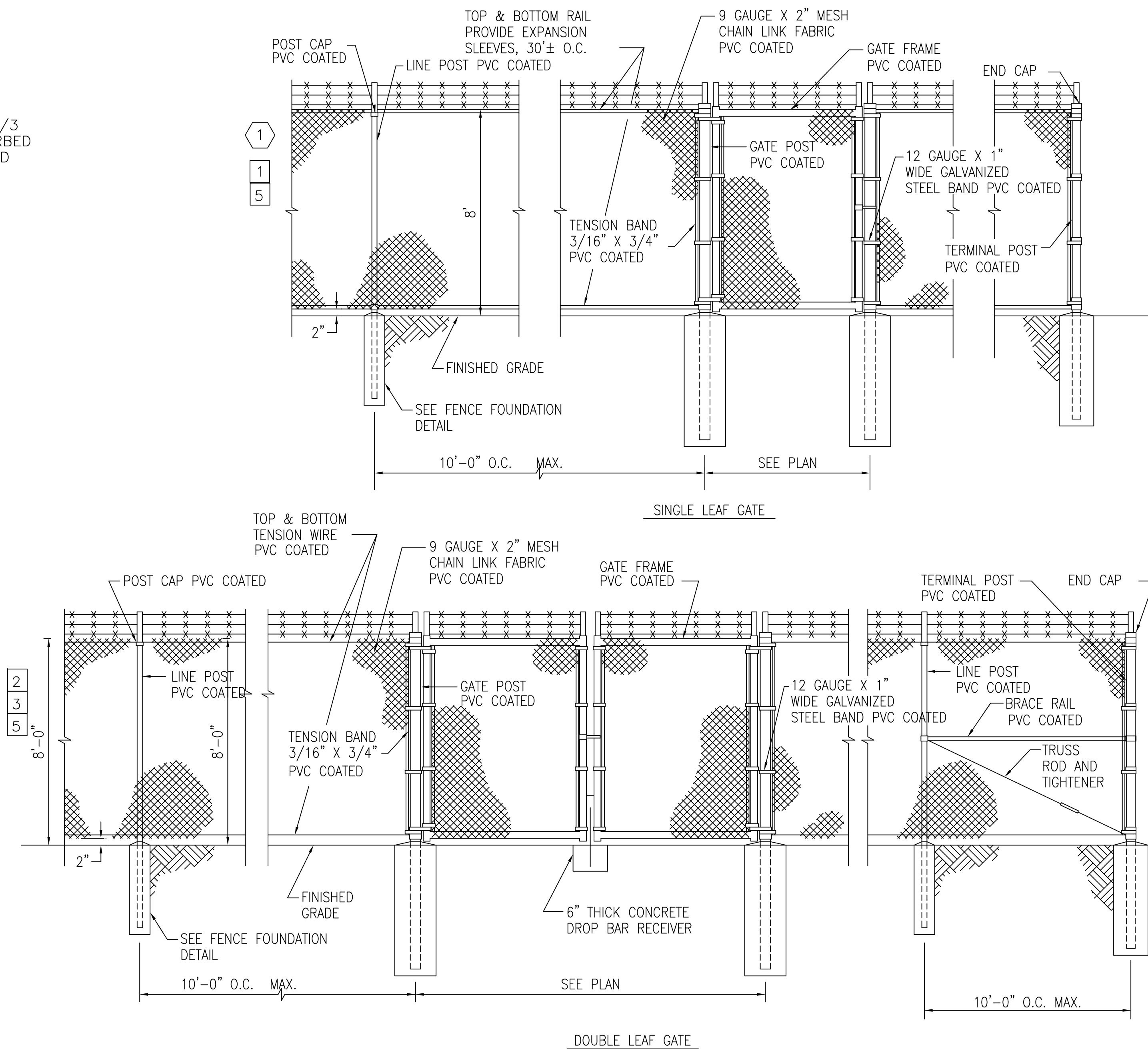


### DEMO NOTES:

- 1 REMOVE AND MOVE APPROXIMATELY 52FT 4INCHES OF SECURITY FENCE BEHIND BLDG. 4654 OVER 10FT, TO PREPARE FOR NEW DEDICATED OUTSIDE AIR UNIT.
- 2 EXISTING CWS & CWR PIPING, TO REMAIN FOR REUSE.
- 3 EXISTING CONCRETE SLAB TO REMAIN FOR REUSE.

### NEW WORK NOTES:

- 1 RE-INSTALL APPROXIMATELY 52FT 4INCHES OF SECURITY FENCING AND MOVE IT OVER 10FT FROM IT'S ORIGINAL POSITION BEHIND BLDG. 4654.
- 2 INSTALL APPROXIMATELY 10FT OF NEW 9 GAUGE X 2" MESH CHAIN LINK FENCING PVC COATED. SEE DRAWING DETAIL (B) ON THIS PAGE.
- 3 RECONNECT FENCING TO EXISTING FENCING AT THE VEHICLE GATE.
- 4 INSTALL FENCE POST ACCORDING TO THE FENCE FOUNDATION DETAIL AS SEEN ON THIS PAGE.
- 5 CONTRACTOR SHALL VERIFY THE EXACT LINK OF FENCING TO BE MOVED AND THE EXACT LINK OF FENCING NEEDED TO TIE BACK IN TO THE EXISTING FENCE.



**B** PERIMETER FENCE  
SCALE: N.T.S.

DESIGNED & ENGINEERED BY:  
FACILITIES ENGINEERING  
MECHANICAL



**FINAL DESIGN**

APPROVED

ACTIVITY - SATISFACTORY TO

DATE

APPROVED

FOR EFD FOR COMMANDER NAVAC

DATE

A/E

DESIGN

DRAWN

REVIEW

OC

CHEF

ARCH/ENGR

PROJECT MANAGER

FIRE PROTECTION

BRANCH MANAGER

DESIGN DIRECTOR

NAVAL FACILITIES ENGINEERING COMMAND  
MARINE CORPS AIR STATION, CHERRY POINT, N.C.

MODIFY HVAC SYSTEM AT MWD  
KENNEL, BLDG. 4654

FENCING DEMO/NEW WORK NOTES & DETAILS

CODE ID. NO. 80091 SIZE D

SCALE: AS SHOWN

FED. NO.

STA. PROJ. NO. 6778955

SPEC. NO.

CONSTR. CONTR. NO.

NAVFAC DRAWING NO.

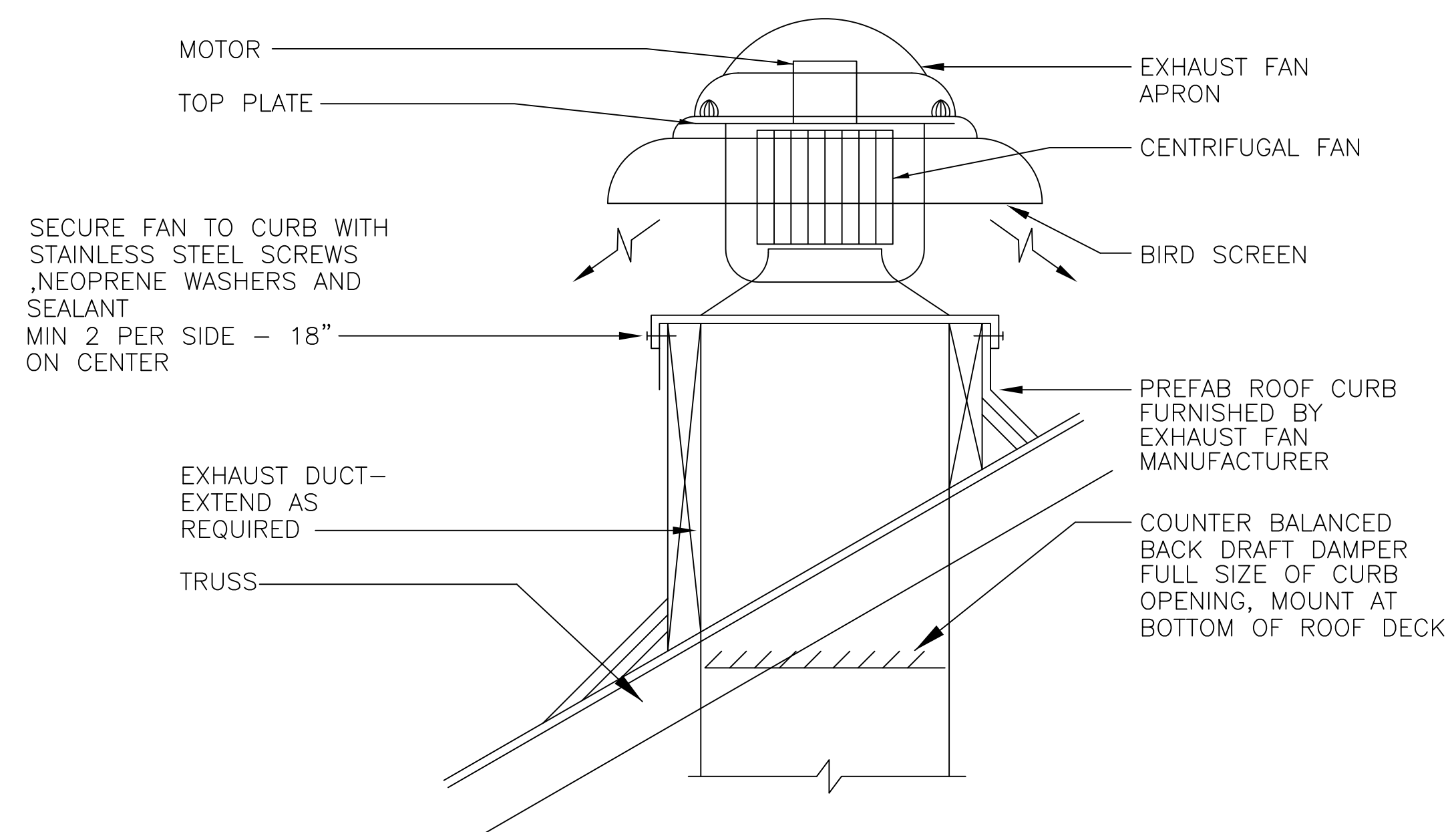
12782356

SHEET 6 OF 12

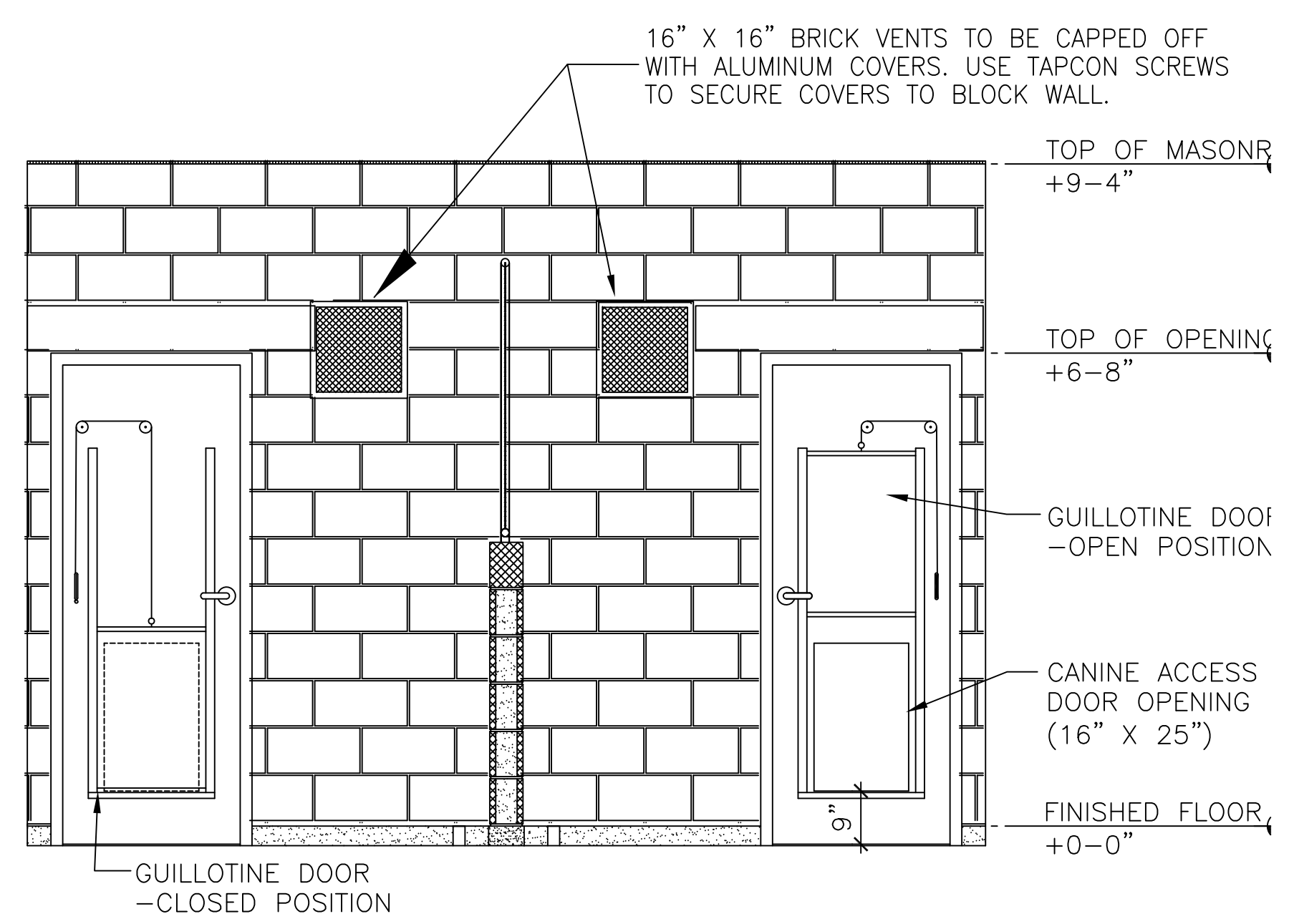
M-103

DRAWING REVISION AUGUST 2002

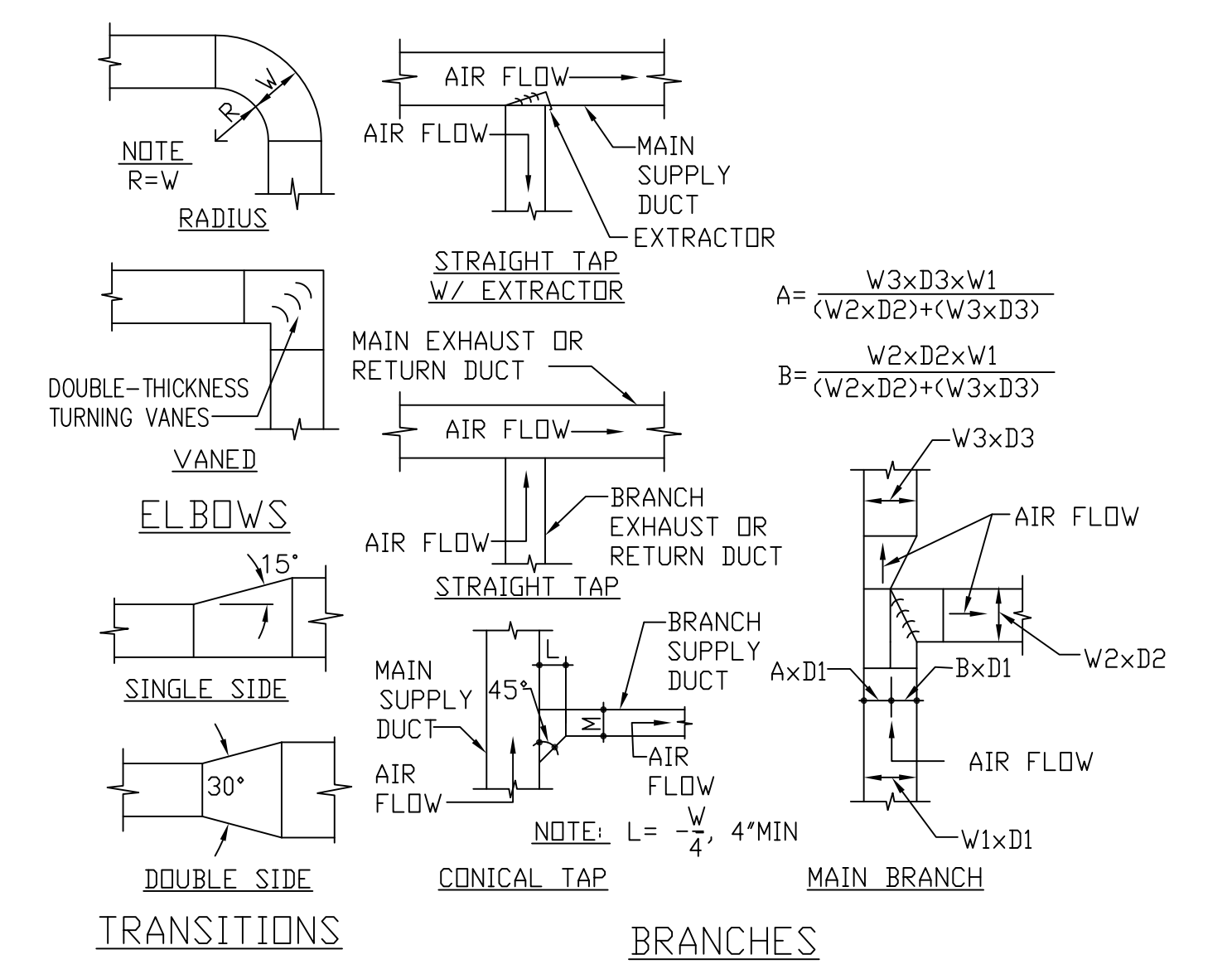




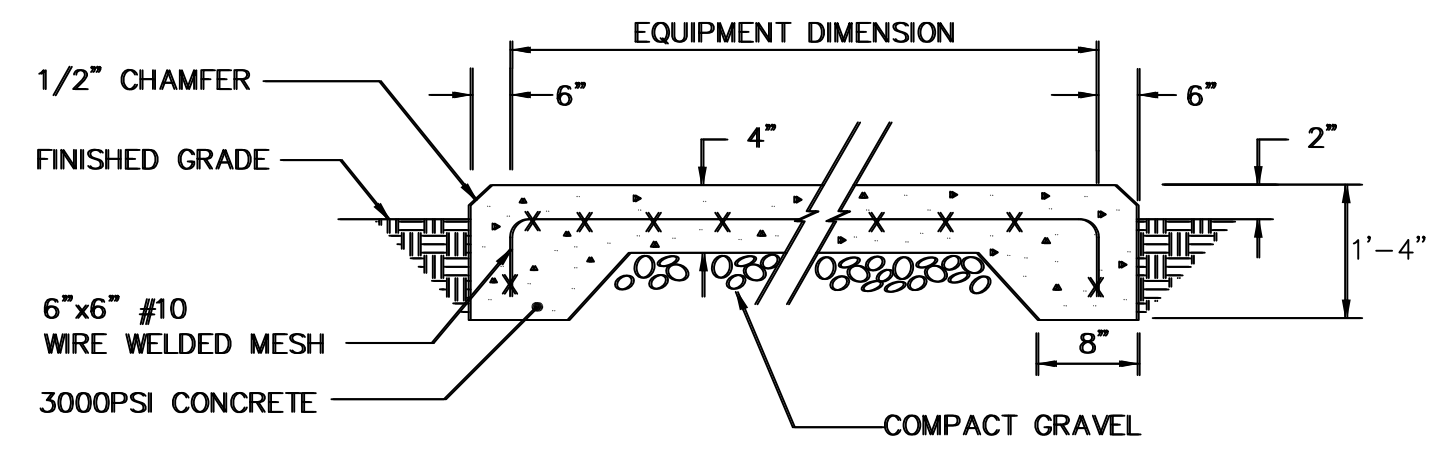
**A** NEW EXHAUST FAN DETAIL - EF-4, 5 & 6.  
 W-501/W-501 NO SCALE



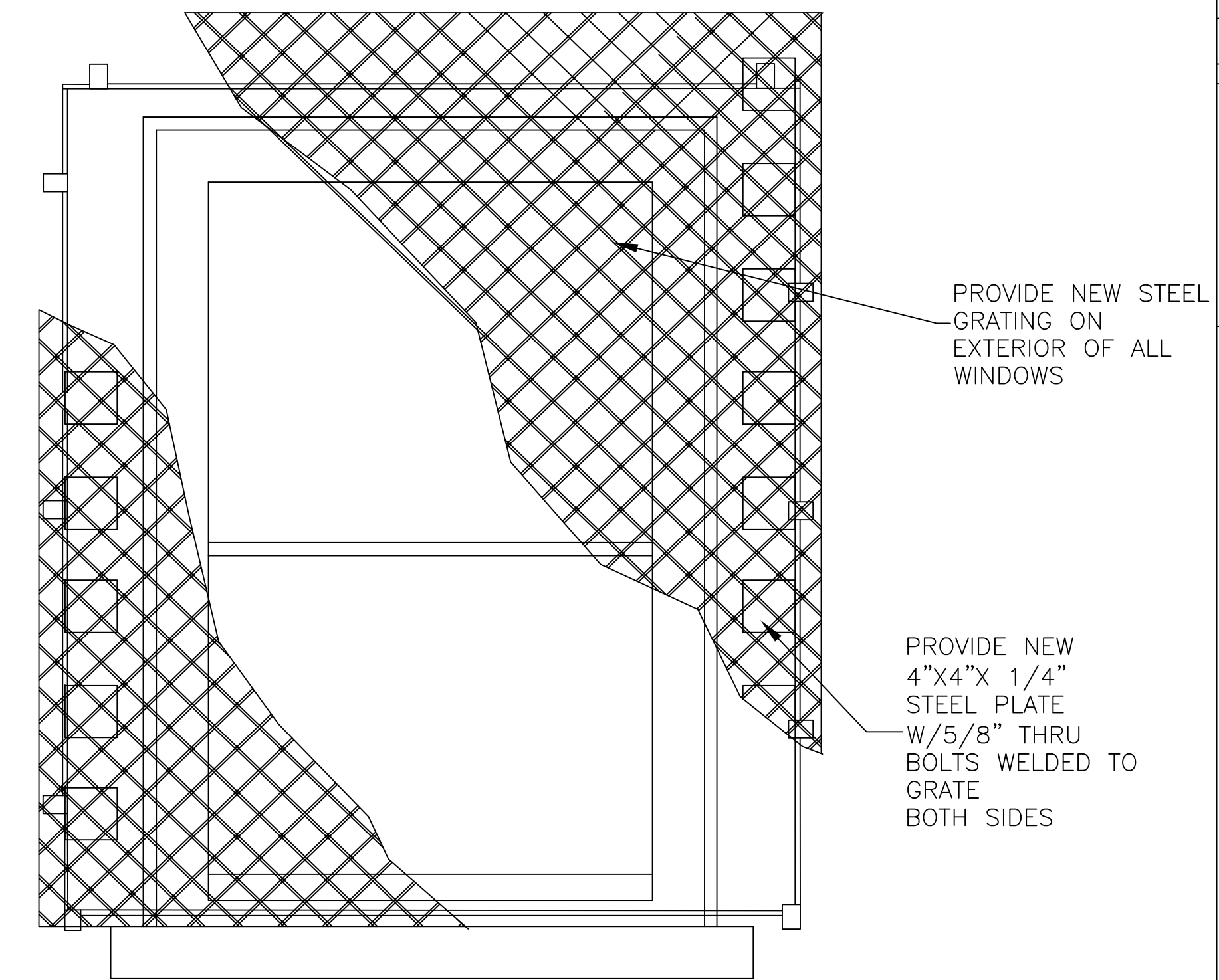
**B** NEW DOOR ELEVATION @ INTERIOR KENNELS (TYP.)  
 W-501/W-501 NOT TO SCALE



**C** DUCT DETAILS  
 W-501/W-501 NO TO SCALE



**D** CONCRETE PAD DETAIL  
 W-501/W-501 NO SCALE



**E** TYPICAL SECURITY GRATE ELEVATION  
 W-501/W-501 NO TO SCALE

APPROVED	DATE	APPN
ACTIVITY - SATISFACTORY TO		
DATE		
APPROVED		
FOR EFD FOR COMMANDER NAVAC		
DATE		
A/E	EFD	
DESIGN	MHE	
DRAWN	MHF	
REVIEW	NAH	
OC	LPF	
CHEF	ARCH/ ENGR.	
PROJECT MANAGER	MHE	
FIRE PROTECTION		
BRANCH MANAGER	LPF	
DESIGN DIRECTOR	LPF	
NAVAL FACILITIES ENGINEERING COMMAND		
MARINE CORPS AIR STATION, CHERRY POINT, N.C.		
MODIFY HVAC SYSTEM AT MWD		
KENNEL, BLDG. 4654		
MECHANICAL DETAILS		
CODE ID. NO. 80091	SIZE	D
SCALE:	AS SHOWN	
FED. NO.		
STA. PROJ. NO.	6778955	
SPEC. NO.		
CONSTR. CONTR. NO.		
NAVFAC DRAWING NO.	12782359	
SHEET	8	OF 11
<b>M-501</b>		
DRAWING REVISION AUGUST 2002		

### OUTDOOR AIR UNIT SCHEDULE

MARK	LOCATION	FAN DATA				DX COOLING COIL						FILTER DATA		ELECTRICAL SERVICE			NOTES	
		FAN CFM	ESP IN. WC	MOTOR HP	OA (CFM)	TOTAL MBH	SENSIBLE MBH	EAT		LAT		REFRIGERANT	TYPE	VOLTS	PH	FLA		MCA
								*FDB	*FWB	*FDB	*FWB							
DOAS-1	KENNEL	7500	-	5	7500	629.8	340.5	95	78	54.3	54.2	NOTE 1	MERV-8	460	3	213.8	267.3	2

NOTES:  
 1. USE R410A REFRIGERANT 0.0 ODS  
 2. THE BASIS OF DESIGN IS BASED ON TRANE HORIZON OUTDOOR AIR UNIT (D/K/N) MODEL# OAND648A4-D1A100JN-D3R02AG1JN1003B000A0.

### EXHAUST FAN SCHEDULE

MARK	TYPE	AIR FLOW CFM	ESP "WC	MAX TS FPM	MOTOR HP	FAN RPM	MAX NC (SONES)	ELECTRIC SERVICE		MOTOR STARTER		DRIVE	REMARKS
								VOLTS	PH	SIZE	TYPE		
EF-4	CENTRIFUGAL	2500	.3	4397	1/3	1018	12	120	1	00	④	BELT	② ④
EF-5	CENTRIFUGAL	2500	.3	4397	1/3	1018	12	120	1	00	④	BELT	② ④
EF-6	CENTRIFUGAL	2500	.3	4397	1/3	1018	12	120	1	00	④	BELT	② ④

NOTES:  
 ① REUSE EXISTING DISCONNECTS ② THE FANS SHALL BE CONTROLLED BY THE DEDICATED OUTSIDE AIR SYSTEM

### GRILLE, REGISTER & DIFFUSER SCHEDULE

MARK	TYPE	SERVICE	NECK SIZE INCHES	APD "WC	REMARKS
Ⓐ	CEILING DIFFUSER	SUPPLY	6" x 6"	.08	①
Ⓑ	CEILING DIFFUSER	SUPPLY	9" x 9"	.08	①
Ⓧ	GRILLE	RETURN/EXHAUST	8" x 8"	.048	②
Ⓨ	GRILLE	RETURN/EXHAUST	12" x 12"	.048	②
Ⓩ	GRILLE	RETURN/EXHAUST	24" x 24"	.048	②

NOTES:  
 ① PROVIDE ALUMINUM SURFACE MOUNT CEILING DIFFUSER WITH 4-WAY BLOW AND ADJUSTABLE DISCHARGE. DIFFUSER SHALL HAVE OPPOSED BLADE BALANCING DAMPER AND HAVE A WHITE FINISH.  
 ② REUSE AND CLEAN THE EXISTING ALUMINUM GRILLES MARKED Ⓧ Ⓨ Ⓩ

### SEQUENCE OF OPERATION

PROVIDE A WALL STAT & SUB-BASE THAT WILL ADJUST THE TEMPERATURE OF THE DEDICATED OUTSIDE AIR UNIT (DOAS).

OCCUPIED

COOLING MODE: (1) THE (DOAS) SUPPLY FAN AND ROOF MOUNTED EXHAUST AIR FANS SHALL OPERATE CONTINUOUSLY. (2) THE OUTSIDE AIR DAMPER SHALL OPEN TO POSITION FOR OUTSIDE AIR AIRFLOW. (3) WHEN THE SPACE TEMPERATURE RISES ABOVE THE COOLING SETPOINT, THE MULTI-STAGE ELECTRIC HEATING SHALL BE OFF. (4) THE COMPRESSORS SHALL OPERATE COOLING IN STAGES TO MAINTAIN SPACE TEMPERATURE SETPOINT. THE SPACE COOLING SETPOINT SHALL BE 78 DEGREES F PLUS OR MINUS 2 DEGREES. IN THE COOLING MODE THE (DOAS) SHALL CYCLE TO MAINTAIN A ROOM TEMPERATURE OF 80 DEGREES F. (ADJUSTABLE)

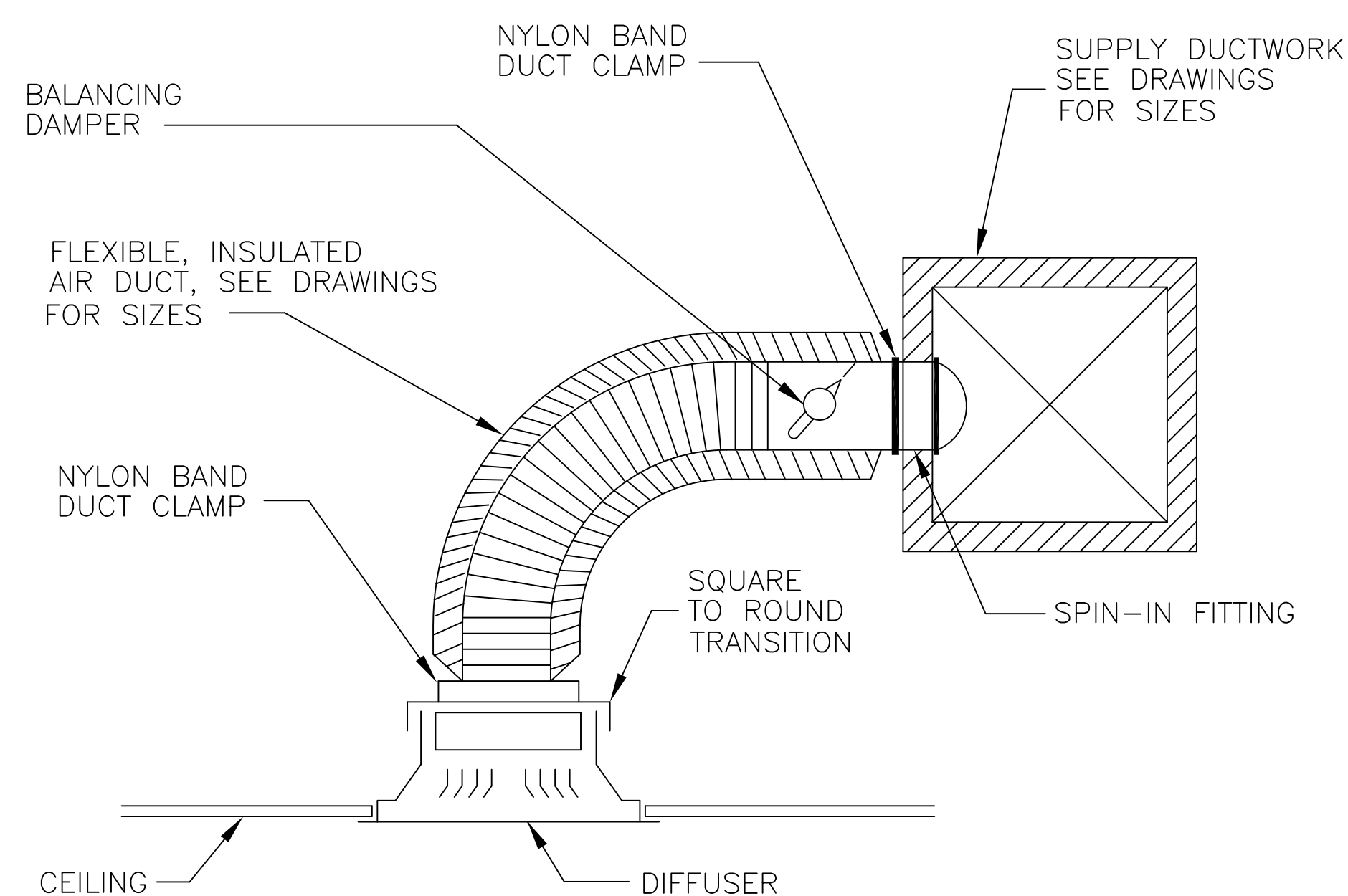
HEATING MODE: (1) THE (DOAS) SUPPLY FAN AND ROOF MOUNTED EXHAUST AIR FANS SHALL OPERATE CONTINUOUSLY. (2) THE OUTSIDE AIR DAMPER SHALL OPEN TO POSITION FOR OUTSIDE AIR AIRFLOW. (3) WHEN THE SPACE TEMPERATURE FALLS BELOW THE HEATING SETPOINT, THE COOLING SHALL BE DE-ENERGIZED AND THE ELECTRIC HEATING SECTION SHALL OPERATE IN STAGES AS NECESSARY TO MAINTAIN THE SPECIFIED SPACE TEMPERATURE SETPOINT. THE SPACE HEATING SETPOINT SHALL BE 60 DEGREES F, PLUS OR MINUS 2 DEGREES. IN THE HEATING MODE THE (DOAS) SHALL CYCLE TO MAINTAIN A ROOM TEMPERATURE OF 60 DEGREES F. (ADJUSTABLE)

DEHUMIDIFICATION:

IF THE SPACE RELATIVE HUMIDITY RISES ABOVE A LIMIT OF 65% RH (ADJUSTABLE) (DOAS) COOLING SHALL ENERGIZED. HOT GAS REHEAT SHALL OPERATE AS NECESSARY TO MAINTAIN THE SPACE TEMPERATURE AT COOLING SETPOINT. WHEN THE HUMIDITY FALLS TO 50% RH (ADJUSTABLE), THE (DOAS) SYSTEM SHALL REVERT TO NORMAL MODE OF OPERATION.

UNOCCUPIED:

THERE IS NO UNOCCUPIED SEQUENCE BECAUSE THERE IS ALWAYS DOGS PRESENT IN THE KENNEL.



NOTES:

FLEXIBLE DUCTWORK SHALL BE LIMITED TO 6'-0" LENGTH. AT LOCATION WHERE BRANCH DUCTWORK EXCEEDS 6'-0" LENGTH, PROVIDE SQUARE BOOT TAKE-OFF, OPPOSED BLADE DAMPER AND TRANSITION TO RIGID ROUND UP TO 6'-0" FROM DIFFUSER. THEN TRANSITION TO FLEXIBLE DUCT SIMILAR AS SHOWN.

### AIR TERMINAL INSTALLATION DETAIL

NO SCALE

APPROVED	DATE	APPN
DESIGNED & ENGINEERED BY: FACILITIES ENGINEERING MECHANICAL	DESCRIPTION	SYN
<b>FINAL DESIGN</b>		
APPROVED		
ACTIVITY - SATISFACTORY TO		
DATE		
APPROVED		
FOR EFD FOR COMMANDER NAVAC		
DATE		
A/E	EFD	
DESIGN	MHE	
DRAWN	MHE	
REVIEW	NAH	
OC	LPF	
CHEF	ARCH/ENGR	
PROJECT MANAGER	MHE	
FIRE PROTECTION		
BRANCH MANAGER	LPF	
DESIGN DIRECTOR	LPF	
NAVAC ENGINEERING COMMAND		
MARINE CORPS AIR STATION, CHERRY POINT, N.C.		
<b>MODIFY HVAC SYSTEM AT MWD KENNEL, BLDG. 4654</b>		
MECHANICAL SCHEDULES		
CODE ID. NO. 80091	SIZE	D
SCALE: AS SHOWN		
FED. NO.		
STA. PROJ. NO. 6778955		
SPEC. NO.		
CONSTR. CONTR. NO.		
NAVAC DRAWING NO. 12782359		
SHEET 9 OF 11		
<b>M-601</b>		
<small>DRAWING REVISION AUGUST 2002</small>		



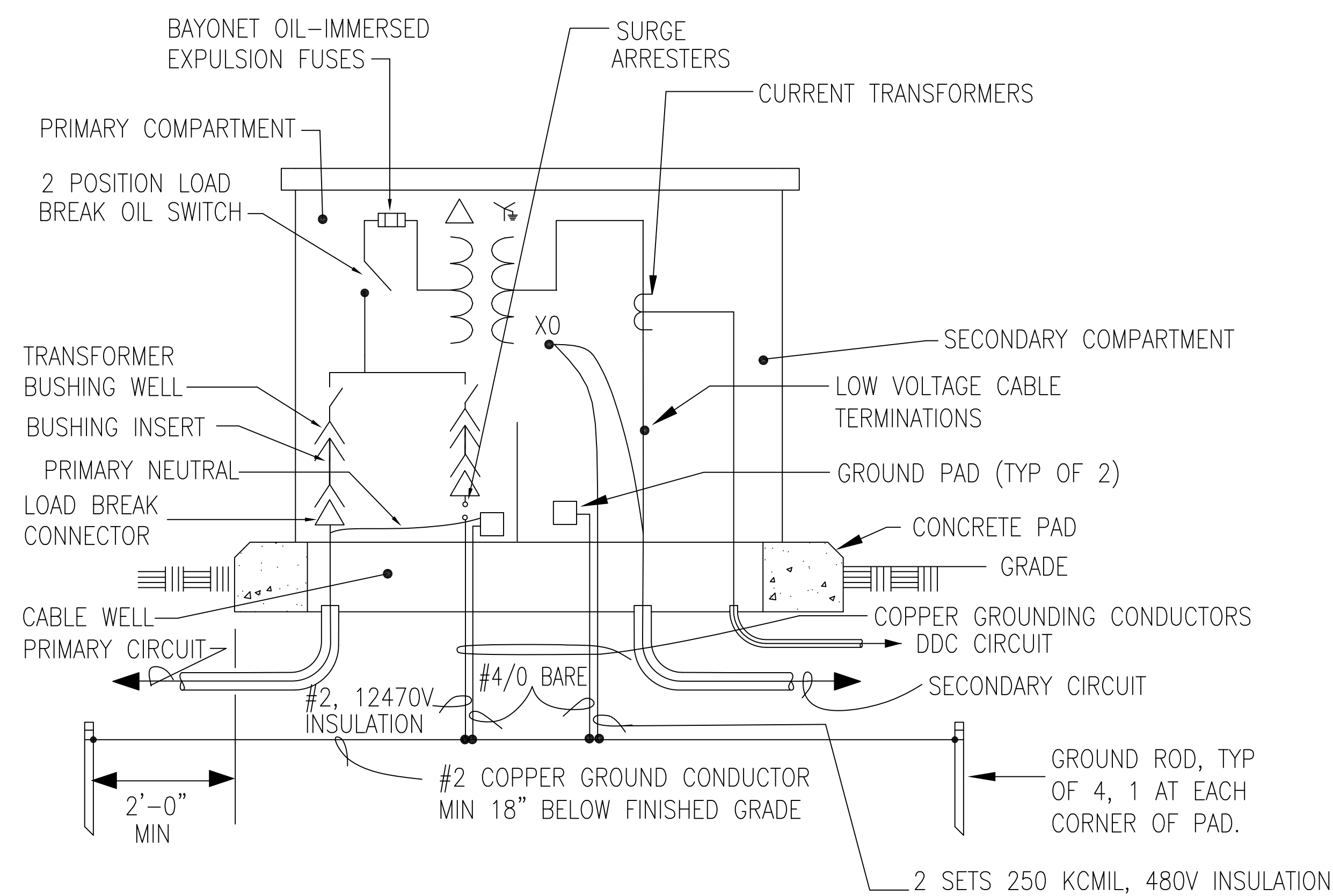
1 2 3 4 5

D

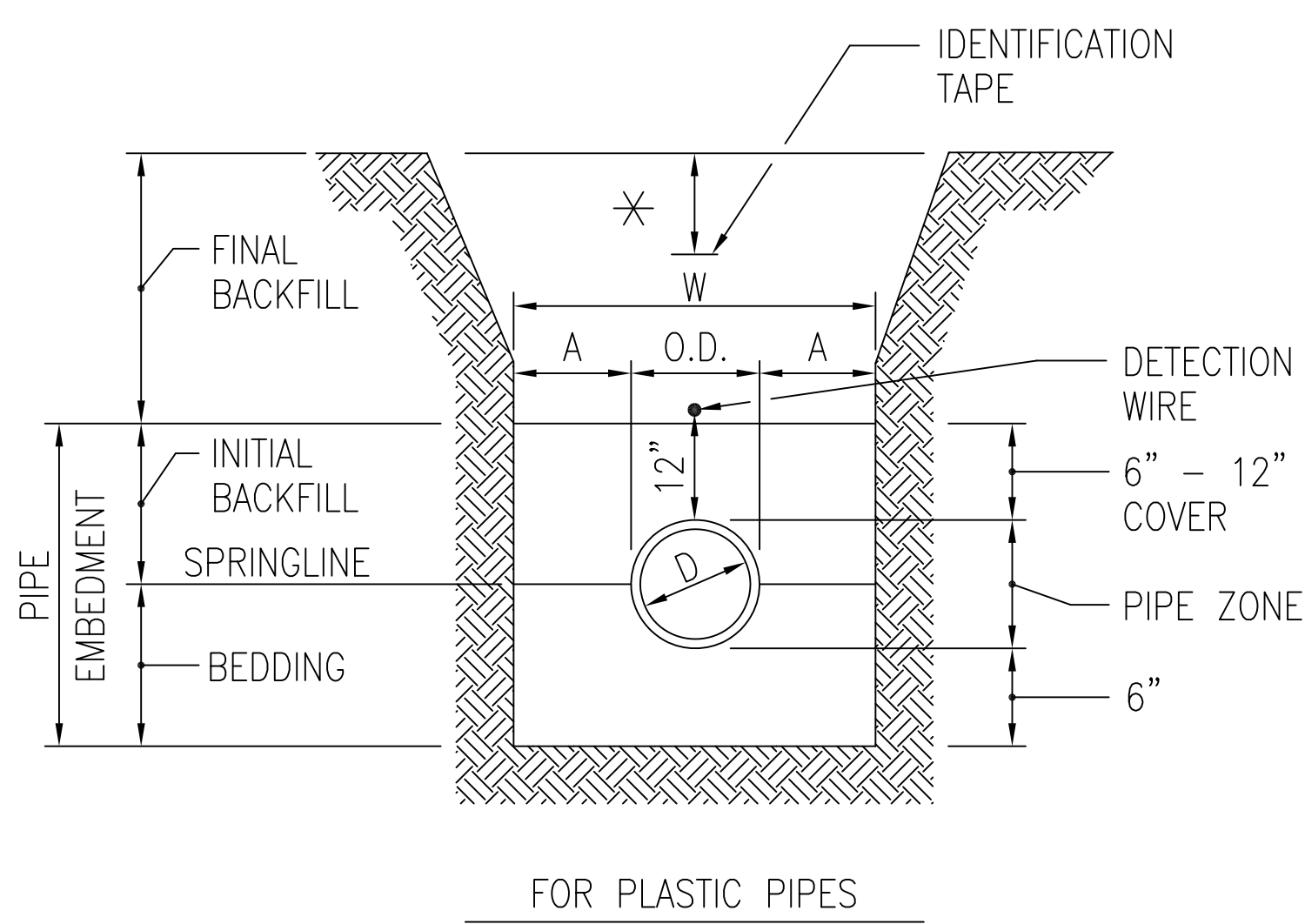
C

B

A



**A** PAD MOUNT TRANSFORMER DETAIL  
E-501 | E-501



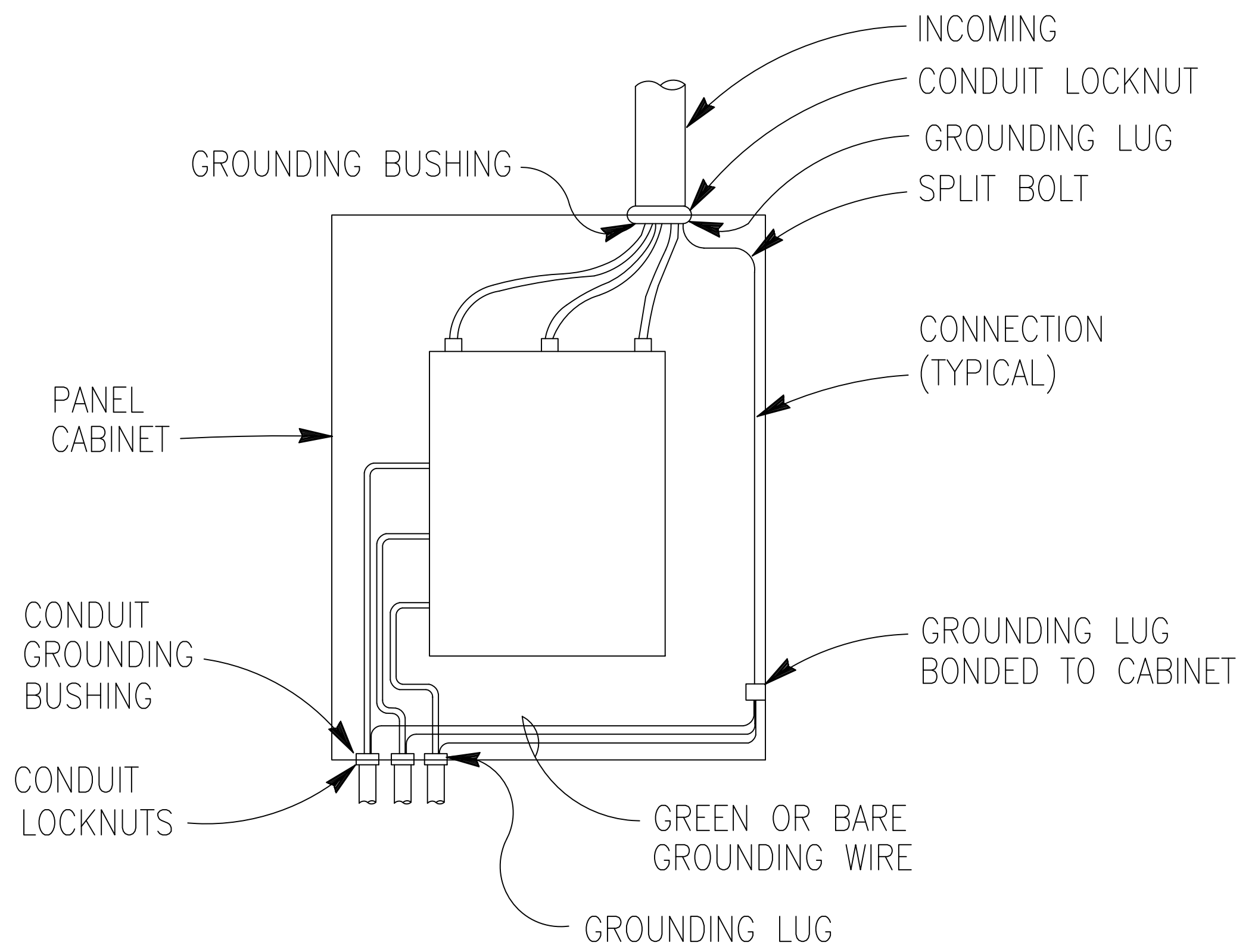
NOTE:  
PROVIDE BEDDING  
IN ACCORDANCE WITH  
THE SPECIFICATIONS.

\* 12" BELOW FINISHED GRADE  
IN UNPAVED AREAS.  
6" BELOW TOP OF SUBGRADE  
IN PAVED AREAS.

PIPE DIA. "D"	MAXIMUM "A"
6" TO 15"	8"
16" TO 21"	10"

MAXIMUM TRENCH WIDTH "W"  
TAKEN AT TOP OF PIPE

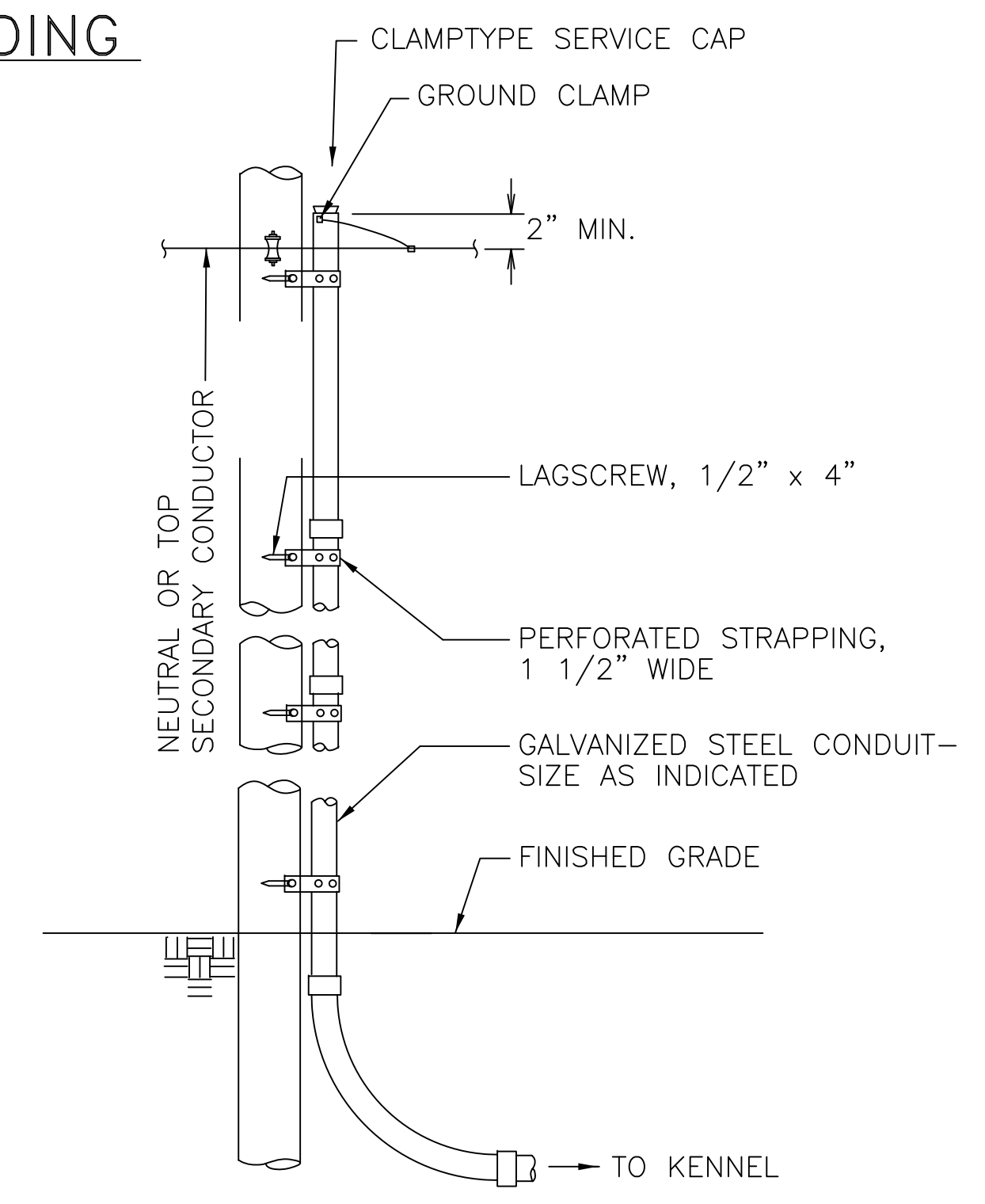
**C** PIPE TRENCH WIDTH DETAIL  
E-501 | E-501  
SCALE: N.T.S.



NOTES:

1. ALL WIRES TO BE NEATLY LACED.
2. AT THE POINT OF ATTACHMENT OF THE GROUNDING LUG TO THE CABINET, THE SURFACES SHALL BE SCRAPPED FREE OF PAINT AND THOROUGHLY CLEANED TO INSURE PROPER BONDING.
3. NEUTRAL CONDUCTOR NOT SHOWN FOR CLARITY.

**B** TYPICAL PANEL GROUNDING  
E-501 | E-501  
N.T.S.



**D** CONDUIT RISER DETAIL  
E-501 | E-501  
N.T.S.

APPROVED	DATE	APPR
ACTIVITY - SATISFACTORY TO		
DATE		
APPROVED		
FOR EFD FOR COMMANDER NAVAC		
DATE		
A/E	EFD	
DESIGN	GK	
DRAWN	GK	
REVIEW	NAH	
OC	LPF	
CHEF	ARCH/ ENGR.	
PROJECT MANAGER	MHE	
FIRE PROTECTION		
BRANCH MANAGER	LPF	
DESIGN DIRECTOR	LPF	
NAVAL FACILITIES ENGINEERING COMMAND MARINE CORPS AIR STATION, CHERRY POINT, N.C. <b>MODIFY HVAC SYSTEM AT MWD                  KENNEL, BLDG. 4654</b> ELECTRICAL DETAILS		
CODE ID. NO. 80091	SIZE D	
SCALE: AS SHOWN		
FED. NO.		
STA. PROJ. NO. 6778955		
SPEC. NO.		
CONSTR. CONTR. NO.		
NAVAC DRAWING NO. 12782322		
SHEET 11 OF 11		
<b>E-501</b>		
DRAWING REVISION AUGUST 2002		

1 2 3 4 5