



EMMA B. TRASK MIDDLE SCHOOL RENOVATIONS

Addendum #1

April 12, 2019



New Hanover County Schools



800 Tiffany Blvd., Suite 200
PO Box 7948
Rocky Mount, North Carolina 27804
252-823-1021 Fax: 252-823-0137

www.barnhillcontracting.com

**New Hanover County Schools
Trask Middle School Renovation
Wilmington, NC**

ADDENDUM #1

April 12, 2019

To: ALL BIDDERS OF RECORD:

This addendum forms a part of the Contract Documents and modifies the original Project Bid Manual Dated March 31, 2019 and Drawings and Specifications dated March 27, 2019. Acknowledge of receipt of this Addendum in the space provided on the Bid Form is mandatory. Failure to do so may subject the Bidder to disqualification.

General Information

1. **Reminder: The last date for questions to be addressed via addendum is April 17, 2019.**
2. Please note that the civil drawings are laid out on 24x36" drawing sheets, but the rest of the drawings are 30x42". The Architect has printed their sets such that the civil drawings are 24x36 print size on a 30x42 sheet.
 - a. Please ensure that when looking at the electronic files of the civil drawings, they are at the correct scale.
3. Provided as an attachment to this addendum is the finish schedule for the 8 Classroom Modular unit. This is provided as reference for those Bid Packages which have work related to setting up of the units.
4. Bid Forms will be mailed out to Prequalified Bidders, the week of 4/15. All bidders should receive by Friday 4/19/19.
5. Attached is the updated Bidding RFI Log with attached responses. Please review all, as the responses apply to the associated Bid Packages.
6. Substitution Request #003 and #004 are provided in the attachments.(Requests #001 & 002 still under review).

Project Bid Manual

Please make the following corrections to SOW items in the respective Bid Package Scopes of Work – Section 3.

1. BP100- General Trades
 - ADD – SOW Item 8 - This contractor will be responsible for removal of the chain link gate hinge post at the corner of Danny Pence Drive and reinstall following the mobile unit setup. (Trailer is wider than the gate

opening) This activity will occur a second time when the units are removed from the site at the time of project completion.

2. BP220 – Abatement and Demo
 - ADD – SOW Item 30 - Exclude demo note 14 on AD 1.0. this will be completed by BP 390.
 - ADD – SOW Item 31 - Clarification on scope: Reference demo delineation plan, NOTE: areas of "new work" and "complete" demo (highlighted) this contractor will be responsible for all demo. Wall to wall and to the ceiling. BP 1600 will be responsible for making safe all electrical, and flag all conduit that remains as HOT. BP 1540 will make safe and flag all remaining plumbing. EXCLUDE ALL HVAC DUCT DEMO this will be the responsibility of BP 1550.
3. BP250 – Turn Key Sitework
 - ADD – SOW Item 49 - Provide surveyed layout for the mobile unit setup. CAD file to be provided by CM.
 - ADD – SOW Item 50 - All site demo inside the courtyard included.
 - ADD – SOW Item 51 - This contractor will be responsible for asphalt patch at CM trailer where water connection is made. Assume 100' x 2'.
4. BP790 – Caulking and Sealants
 - ADD – SOW Item 21 - All exterior caulk joints are to cut out and replaced as part of this scope of work
5. BP 960 – Resilient Carpet and Base
 - ADD – SOW Item 30 – It should be noted that in the majority of VCT replacement areas abatement by others will occur. Preparation for new flooring install should be accounted for.
 - ADD – SOW Item 31 - Clarification on scope: Reference demo delineation plan, NOTE: 100% of the existing VCT is being replaced, areas outside of those highlighted in the demo delineation plan will be the responsibility of this bid package to demo and replace, all normal associated floor prep included. This phased work will occur over the course of the school year. This will be coordinated with the CM and NHCSS schedule. NOTE: All VCT called out in the highlight portion of the demo delineation plan is the responsibility of BP 220 to remove via abatement.
6. BP 980 – Acoustical Ceilings
 - ADD – SOW Item 25 - Clarification on scope: Reference demo delineation plan, NOTE: 100% of the ceiling grid and tile is being replaced, areas outside of those highlighted in the demo delineation plan will be the responsibility of this bid package to demo and replace. This phased work will occur over the course of the school year. This will be coordinated with BP 1600, BP 925, and BP 400. Coordinate with CM.



800 Tiffany Blvd., Suite 200
PO Box 7948
Rocky Mount, North Carolina 27804
252-823-1021 Fax: 252-823-0137

www.barnhillcontracting.com

7. BP 990 – Painting
 - ADD – SOW Item 18 - If locker room alternate is not taken, this contractor will be responsible for minor touchup around interior signage during replacement.
 - ADD – SOW Item 19 - Clarification on scope: Reference demo delineation plan, NOTE: 100% of the school being repainted, areas outside of those highlighted in the demo delineation plan will be the responsibility of this bid package for all wall prep prior to final paint, including but not limited to adhesion testing, patching of existing holes, removal of plastic moly anchors and screws, etc.etc. to provide a finished product. This phased work will occur over the course of the school year. This will be coordinated with the CM and NHCSS.
8. BP1010 – Identifying Devices
 - ADD – SOW Item 12 - This package will remove and replace the interior signage inside the locker room, as part of the base bid. Alternate pricing will be in the event of quantity changes etc. Painting or patching by others.
9. BP 1540 – Plumbing
 - ADD – SOW Item 45 - Scope clarification: CM Trailer water hookup will either be by underground water main located in the parking lot near the trailer, or from building main located in the storage room by the kitchen back door. Either way trenching thru existing asphalt will be required.
10. BP 1550 – Turn Key HVAC
 - ADD – SOW Item 42 - ALL DEMO of DUCT will be by this contractor.
11. BP 1600 – Turn Key Electrical
 - ADD – SOW Item 56 - Clarification on CM trailer power hook up location, there is a DEP junction box located less than 100' from the trailer location shown on the logistics plan, simple 4x4 and meter box only needed, with all load side wiring.
 - ADD – SOW Item 57 - Clarification on scope: Reference demo delineation plan, NOTE: with 100% of the ceiling grid and tile being replaced, areas outside of those highlighted in the demo delineation plan this contractor will be responsible to coordinate with BP 980 for all demo/replacement of new lighting and ceiling mounted device install. This phased work will occur over the course of the school year. This will be coordinated also with BP 925, and BP 400. Coordinate with CM.
 - ADD – SOW Item 58 - Reference demo delineation plan, in areas of complete demo, this contractor will make safe for BP 220 and flag all remaining hot conduit. All conduit called to be removed by BP 220 will



800 Tiffany Blvd., Suite 200
PO Box 7948
Rocky Mount, North Carolina 27804
252-823-1021 Fax: 252-823-0137

www.barnhillcontracting.com

be cut back to the furthest Jbox and flagged where the circuit becomes hot again.

Attachments

1. Pre-bid Conference Meeting Minutes dated April 10, 2019 with attachments.
2. "First String Space Modular Buildings – Finish Schedule"
3. Bidding RFI Log with Attached Responses; RFIs 01, 02, 03, 04, 05, 07, & 08.
4. Trask Middle School Demo Delineation Plan Sketch
5. Substitution Request #003 – Hiny Hiders
6. Substitution Request #004 – Tufftec Bench (Disapproved)

End of Addendum #1

TRASK MIDDLE SCHOOL RENOVATIONS PRE-BID MEETING



April 10, 2019



**BARNHILL
CONTRACTING
COMPANY**



New Hanover County Schools
Great Expectations. Every School, Every Child.

**S A W Y E R
S H E R W O O D
& A S S O C I A T E
ARCHITECTURE**

Meeting Logistics



- Greetings & Thanks for Attending
- Restroom facilities
- Meeting Sign-In Sheet
- Turn off cell phones
- All Prime Bidding by Pre-Qualification Only
- Meeting Duration NTE 90-Minutes w/ Site Walk
- Will Take Questions / Raise Hand to be acknowledged
- Meeting Minutes & Attendee Listing to be issued via Addendum

Meeting Purpose



- A Forum for Explanation of Project Requirements & Expectations
- Receive Subcontractor Feedback
- Explain & Understand Project Responsibilities
- Address Unclear Issues, Items and/or Concerns
- Opportunity to Build New Business Relationships
- Identify Those Who Voluntarily Want to Participate/Follow Project Procedures

Meeting Agenda



- Project Team Introductions
- Project Overview/Description & Project Goals
- Project Documents & Key/Critical Dates
- Bidder Instructions & MWBE Project Participation
- Bid Day Activities & Scope Review/Confirmation Meeting
- Project Logistics, Work Rules & Safety
- Schedule & Schedule Compliance
- Project Administrative & Construction Engineering Requirements
- Quality Control, First Summer Items & Work Scope Summaries
- Closing Comments & Questions
- Preferred Brand Alternates

Project Team Introduction



- Owner: New Hanover County Public Schools
Owner Project Representative: Kimberly Gordon
- Architect – Sawyer Sherwood and Associates
- Civil/Landscape Engineer – CLH Design
- Structural Engineer – Woods Engineering
- PME Engineers – Cheatham and Associates
- Design Professional(s) Project Representative(s):
Doug Sherwood – Sawyer Sherwood and Associates

Project Team Introduction



- **Construction Manager at Risk: Barnhill Contracting Company**

Construction Manager at Risk Project Representative(s):

Barry Harden, Vice President of Operations

Brad Martin, Project Executive

Matt Cave, Project Superintendent

Ruben Auvert, Project Engineer

- **Pre-Bid Communications**

Directed to/through Construction Manager/Barnhill Contracting Company

Project Overview/Description

□ Project Location/Address:

- ▣ Trask Middle School – 2900 North College Road, Wilmington, NC 28405



Project Overview/Description

- Project Overview Narrative:

- The project consists of renovations to the 92,365 square feet single story existing Middle School. Renovations to the following existing areas: Administration areas with new entry vestibule, Media Center, Class Rooms, bathroom & locker room renovations, courtyard and Exterior Walls/Windows. Building interiors are to consist of CMU, drywall, acoustical ceilings, VCT flooring, porcelain tile and bleacher replacement. The new classroom renovation portion of the project will consist of light demolition, acoustical ceilings, solid surface casework, painting, flooring, and building specialties. The existing restroom renovations will consist of the demolition and reinstall of existing toilet fixtures, specialties and finishes. A new clerestory will be added above classrooms. The roofing for entire school will consist of a low slope PVC roof overlay with roof drains and scuppers. Plumbing, HVAC and Electrical replacements will be made.

Project Overview/Description

- Address Project Unique Issues:
 - ▣ First Summer Abatement & Temp Flooring Activities (refer to Logistics & Partial Phasing Plan; Section One Bid Manual)
 - Short Procurement Period
 - ▣ Coordination with Mobile Classrooms
 - ▣ Thinking Creatively on starting work
 - ▣ ACTIVE CAMPUS!!!!
- Anticipated Construction Duration (Months): 13 (July 2020)
- One Bid Date – Two Bid Times (9:00 AM & 1:00 PM)
- Expectations of Project Participants:
 - ▣ Safety, Integrity, Quality, On-Schedule, Timely Paperwork Processing, Teamwork, Good Neighbor Policy, etc.

Project Goals

- Each Project Participate Intimately Familiar w/ Project Details
- Be Accountable to Do Your Job On Time
- Deliver High Quality Work
- Contribute to a High Productive Workplace
- Manage Construction Process Fairness, Firmness & Honesty
- Managing Safe Site/Workplace – No Lost Time Accidents
- Deliver required MWBE Project Participation
- Engage in Project Communication/Coordination w/o Having to be Asked To
- Be “Good Neighbors” to Existing Surroundings and Active School
- All Disputes Resolved at Field Level

Project Documents

- All Project Participants Held Accountable to Project Documents to Include:
 - Drawings dated: 3/27/19
 - Specifications dated: 3/27/19
 - Bid Manual dated: 3/31/19
 - All Addendums: TBD
- Project Participants Have Responsibility to Review ALL Project Documents
 - Do not be Limited to Specific Work Scope
 - Coordination of Work with Work of Others
- Document Availability - Plan Rooms & Printing:
 - Barnhill Contracting Company Online Planroom, Barnhill Contracting Company – Raleigh & Wilmington Office, Duncan Parnell Wilmington, NC
 - Addendums (as needed) Issued by CM

Key/Critical Dates

- Last Day for Questions 4/17/19 @ 12:00 PM
- Last Addenda Issuance Date 4/18/19
- **Bid Day One - Morning Specified Packages Only**
Date & Time 4/25/19 @ 9:00 AM – 12:00 PM
- **Bid Day One - Afternoon Specified Packages**
Date & Time 4/25/19 @ 1:00 PM – 4:00 PM
- Scope Review Meeting Timeframe 4/26/16 – 5/8/19
- Anticipated Construction Start 6/17/19
- Anticipated Substantial Completion 7/31/20
- Anticipated Closeout Complete 8/20/20

Bidder Instructions

□ **Definitions**

- Project Documents include Drawings, Specifications, Bid Manual and All Addendums

□ **Bidder Representations**

- Bidder has reviewed all Project Documents
 - All Drawings
 - All Specifications
 - Entire Bid Manual
 - All Addendums
- Bidder has visited/is familiar with project site
- Bidder has reviewed all geotechnical information
- By submitting Bid, bidder agrees project documents are biddable and buildable for stated price

□ **Interpretation or Corrections**

- Advise CM of any discrepancy, omission, error or inconsistency no later than 10-days prior to Bid Day
- All Bidder questions to be in writing
- All questions received will be responded to via addendum and shared with all Bidders
- CM is relying on Bidders ability to provide complete & comprehensive bid

Bidder Instructions

□ Substitutions

- ▣ Must be received 15-days prior to Bid Day
- ▣ Must complete CM “Substitution Request Form”
- ▣ Bidder responsible for any/all domino impacts of approved substitution

□ Preparation & Submission of Bid

□ All Bid Submission Questions to: Barnhill Contracting Company

- ▣ Brad Martin, Project Executive **PRIMARY CONTACT**
 - bmartin@barnhillcontracting.com
 - (919)795-6919 (Cell)
- ▣ Matt Cave, Project Superintendent
 - mcave@barnhillcontracting.com
 - (252)885-2448 (Cell)

Bidder Instructions

- ❑ No modifications of any kind to Bid Form permitted
- ❑ Bid Form signed by Company Officer
- ❑ Bid Price to include anything and everything required to complete work
- ❑ Bid Price to include anything and everything required to comply with project documents
- ❑ Provide unit prices as requested
- ❑ Acknowledge receipt of addendums issued
- ❑ No exclusions, qualifications and/or clarifications on/with Bid Form is permitted
- ❑ Fill out all blanks on Proposal Form

Bidder Instructions



- Bid Bonds

- ▣ Any packages over \$300,000.00 **MUST** include a Bid Bond.

- Payment and Performance Bonds

- ▣ All packages **MUST** include a P&P Bond Cost (Over \$100K Only)
 - ▣ Bid forms will include an alternate section to be filled out for the P&P Bond Cost

Bidder Instructions

□ Post Bid 72-Hour Submission Items

- ▣ Affidavit C with MWBE Firms
- ▣ Affidavit D MWBE Good Faith effort
- ▣ Tiered Subcontractor Listing

□ Contract Award

- ▣ CM & Owner will determine the most responsive, responsible, lowest bid
Responsive – Bid Form completed correctly
 - Responsible – price adequately reflects entire scope, project requirement compliance
 - Lowest Bid – lowest cost to the Owner
- ▣ CM will issue Notice of Intent to Award to all Selected Bidders
- ▣ Selected Bidders 10-workdays to execute Subcontract
 - Review Contract prior to Bid
 - No contract modifications permitted after Bid

MWBE Project Participation

- MWBE Project Participation Goal 10% **MINIMUM**
- All Bidders Review MWBE Minimum Compliance Guidelines
- MWBE Prime Bidders Required to Meet Goal via Tiered Subcontract Relationships
- Be Prepared to “Show Your Work” Good Faith Effort
 - ▣ Affidavits Required
- CM/Owner expects/requires Active MWBE Project Participation – CM Monthly Monitoring during Project
- Opportunity to Increase Business Relationships with New Firms
- Issue CM MWBE Listing
- Encourage Certification SWUC Program
 - ▣ <http://www.doa.nc.gov/hub>

Bid Day Activities

- Prequalified Prime Bidders
- 2nd & 3rd tier Bidders No Prequalification Requirement
- Required NHCS Forms to be completed: [Sexual Offender Registry Check Certification](#)
- All Bids Received Must be Sealed Envelope
- Submit Bids to: Sealed Bids hand delivered to New Hanover County Schools Large Conference Room, located 6410 Carolina Beach Road Wilmington, NC 28412 or sealed bids delivered before 5:00 PM on 4/24/19 to the Wilmington office of Barnhill Contracting Company, 272 North Front Street, Suite 420 Wilmington, NC 28401.
- Bids Opened & Read Aloud: New Hanover County Schools Large Conference Room, located at 6410 Carolina Beach Road Wilmington, NC 28412.
- Bid Day Apparent Low Bidders Subject to Scope Review Confirmation
- Bid Tabulation Will be Available w/in 48-hours of Bid Day upon **Request**
- Bid Day Bid Evaluations & Scope Review Confirmations Kept in Strict Confidence

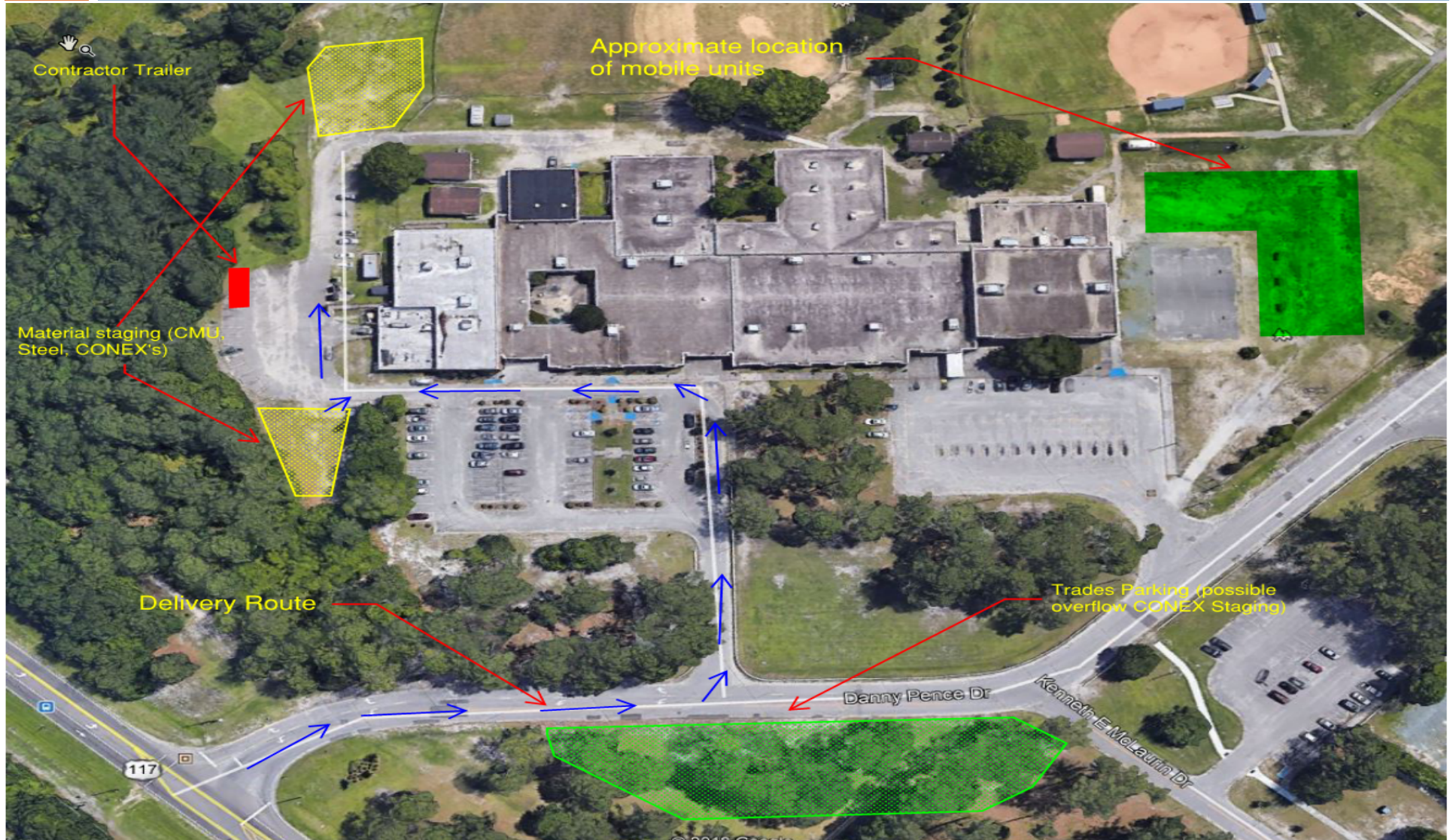
Scope Review/Confirmation Meeting

- Scope Review Meeting to Include Bidder Estimator & Proposed Field Personnel
- Bring Estimate Notes, Take-off, etc. for Review Purposes/Discuss Project Details
- Meetings Held at Barnhill's Building Division Wilmington Office Located at 272 North Front Street, Suite 420 Wilmington NC
 - ▣ Face-to-face
 - ▣ Teleconference
- CM to Notify Bidders w/in 72 hours of Bid Day to Attend Scope Reviews
- Scope Review Meeting Duration NTE 90-Minutes

Project Logistics/Work Rules

- Work Hours: 7:00 AM to 5:30 PM M-F and Weekends as required
- Project Safety Orientations & Safety Plan
- Weekly Meeting Attendance
- Daily Field Reporting
- Daily Cleanup & Housekeeping
- Communications & Coordination
- Owner Furnished Items: Misc. Toilet Accessories
- Site Security: No Night Watchman or Security Provided by Owner/CM
- Protection of In-Place Work

Trask Middle School Logistics Plan



Schedule



□ Tentative Milestone Dates:

NTP/Intent to Award	06/05/19
NTP for Construction	06/17/19
First Day of School (19-20)	08/27/19
Last Day of School (19-20)	06/11/20
Substantial Completion	07/31/20
Final Completion (Including Closeout)	08/20/20

Schedule



- Bid Default Schedule
- Depicts CM's 1-sided View of Project Sequences & Durations
 - ▣ All Subcontracts Tied to Bid Default Schedule
 - ▣ Used to Manage Construction Until Construction Schedule Approved
 - ▣ Schedule is Based on Standard Hours/Day, 5 Day/Week.
- Construction Schedule
 - ▣ CM Facilitate Schedule Sessions
 - ▣ Subcontractor Field Supervision Participation Mandatory
 - ▣ Cultivate Subcontractor Specific work Scope Details Input
 - ▣ Combine All Detail Received into Logical CPM Schedule
 - ▣ Create "Approved" Construction Schedule Which All Will Support

Schedule

- Schedule Updating & Compliance Management
 - ▣ Construction Schedule Reviewed & Updated Weekly
 - ▣ Review & Coordinated at Weekly Project Meeting
 - ▣ Responsible Party Held Accountable to Schedule Delay & Domino Impacts
 - ▣ CM to Direct Overtime Work As Necessary to Meet Schedule
 - ▣ Project Will Be On Schedule Every Monday Morning
- Schedule Sequence
 - ▣ School → Site → Building Activity Detail
- CM to Utilize Primavera (P7) Scheduling Software

Project Administrative Requirements

- Weekly Coordination Meetings are Mandatory – Time to be established by CM
- Daily Field Reports are Mandatory – Turn in by 12:00 pm the following day
- Attend OAC Meetings as requested
- Weekly Safety Meeting documentation will be required from each subcontractor
- Safety Orientation will be conducted prior to any contractor starting work on site
- ID Stickers provided by Barnhill Contracting Company as Required.
- All administrative paperwork is required to have 10 workday turnaround

Construction Engineering Requirements

- All submittals to be sent to the Construction Manager no later than 30 days from issuance of contract. Submittal to be turned around in 20 days. Critical Submittals should be noted as critical for quicker turnaround. All Domino Effects due to delayed Key Submittals will be the responsibility of the Subcontractor.
- Each Contractor is required to conduct a thorough review of submittals for accuracy and completeness prior to submittal to the Construction Manager
- Submittals not submitted in the correct format or incomplete will be returned without review and resubmittal required

Construction Engineering Requirements



- ❑ Open Issues will be resolved by Construction Manager within 30 days.
- ❑ Closeout documents should be submitted as early in the project as possible for each respective scope of work.
- ❑ Warranties will be submitted separate from other closeout documents and will start upon date of substantial completion. Construction Manager to confirm date of Substantial completion prior to issuance of any warranties.

Quality Control

- CM Responsible for QC Management – NO Negotiation of In-Place Quality
- Subcontractors Responsible for In-Place QC
- All Mock-Up Requirements Separate from In-Place Work
 - ▣ Project Will Require Mock up Panels for review per the specifications.
- Be Prepared for:
 - ▣ Pre-installation Meetings for ALL Work
 - ▣ Benchmark Field Checks & Evaluations
 - ▣ Quality Non-Conformance Notices
 - ▣ Repairs & Re-Work No Avenue for Additional Compensation

Quality Control



- Provide Protection of Completed Work
- Respect Complete Work of Others
- CM Will Manage QC Non-Conformance Issues Log / Review at Weekly Project Meeting
 - ▣ Issues Log emailed to Subcontractors on daily basis
 - ▣ Immediate Follow-up & Corrections Required by Responsible Party
 - ▣ Direct involvement by Subcontractors

First Summer Specific Items

- Phased Abatement & Demo
- Temporary and Permanent Flooring



Work Scope Summaries

- **BP001 – General Guidelines (ALL BIDDERS TO REVIEW)**
- **Mobile units are submitted as a separate permit with the County – includes work by the following:**
 - **BP100, BP105, BP250, BP290, BP800, BP925, BP960, BP980, BP990, BP1005, BP1540, BP1600**
- **BP100 General Trades** – Includes forklift, daily cleanup, locker relocation, misc items
- **BP105 Final Cleaning** – Multiple mobilizations, all required project final cleaning (interior/exterior), removal of floor protection.
- **BP220 Demolition & Abatement** – All required selective demolition and abatement; work will be phased.
- **BP250 Turnkey Sitework & Utilities** – All grading, utilities, concrete paving & sidewalks, asphalt.
- **BP290 Landscaping** – All plantings and seeding as indicated, including pavers in Courtyard.

Work Scope Summaries

- **BP390 Turnkey Concrete** - Rebar caps & footing chairs, concrete materials, flatwork, reinforcing steel, footings, all demo of existing concrete included.
- **BP400 Turnkey Masonry** – Interior CMU walls with light exterior brickwork.
- **BP500 Turnkey Steel** – Structural and Misc Steel.
- **BP620 Millwork** – New Casework and Countertops, Reception Desk.
- **BP740 Roofing** – Complete roofing overlayment.
- **BP742 Metal Wall Panels** – All metal wall panels.
- **BP790 Caulking & Waterproofing** – Brick sealer, closed cell sprayfoam, caulking of any item requiring backer rod.
- **BP800 Turnkey Doors/Frames/Hardware** – Rated Door replacement, HM doors/frames, hardware, building software integration, phased installation.
- **BP840 Storefronts/Glass/Glazing** – Replacement Windows & Aluminum Doors, all demo and caulking related to this scope of work.

Work Scope Summaries

- **BP925 Metal Studs/Drywall/Insulation** – All new GWB assemblies and wood blocking in metal partitions, one superintendent for duration of project, fire stopping.
- **BP930 Ceramic Tile** – All new tile installation, demo of existing, Crack isolation membrane, floor patching & prep, protect finished work, Terrazzo Scope.
- **BP960 Resilient/Carpet/Base** – Substrate prep, floor patching/buffing, testing of sub floor, flooring, entrance mat.
- **BP 980 Acoustical Ceiling Systems** – Lay-in ceiling systems, acoustical wall panels, complete replacement of existing lay-in ceiling.
- **BP990 Painting** – Paint related caulking, any special coatings, complete re-painting of existing building, exterior required painting.
- **BP1005 Specialties, Accessories, Div. 10** – Wire guards, mirrors, toilet partitions, accessories, appliances, etc.
- **BP1010 Identifying Devices** – All interior/exterior building signage/lettering
- **BP1240 Telescoping Bleachers** – Bleacher replacement and Wall Pads.

Work Scope Summaries



- **BP1540 Plumbing** – Gas piping, limited BIM Coordination, housekeeping pads, Hook up Trailers, Toilet Room Renovations.
- **BP1550 HVAC Systems** – Unit Replacement, HVAC Controls, Test and Balance, limited BIM Coordination, place HVAC systems into service asap.
- **BP1600 Electrical** – Temporary power & lighting, place Electrical systems into service asap, motor starters & disconnects, limited BIM Coordination, Switchgear Replacement, complete lighting replacement, Hook up Trailers.



QUESTIONS?

Preferred Brand Alternates

- ❑ No. G-1 Preferred Hardware:

- ❑ Hinges (Ives), Cylinders (Yale), Mortise Locks (Yale), Closers (LCN), Exit Devices (Von Duprin), Key Keeper (Knox Valut), Electronic locksets (Schlage)

- ❑ No. M-1 Preferred DDC Controls:

- ❑ DDC system by Johnson Controls, Inc;

- ❑ No. E-1 Preferred Intercom System:

- ❑ Intercom System by Aiphone Corporation.



QUESTIONS – Preferred Alternates?

Comments and Questions From PREBID CONFERENCE

Questions from the pre bid meeting:

1. Is the SwitchGear Replacement targeted for the 1st summer ?
 - ANS: No. With limited procurement time switchgear replacement will happen 2nd summer or an extended break during school year. Similar thing was done on the Laney HS reno, so we have a baseline plan to assist the Electrician with.
2. Are Sexual Offender Registry Checks required for everybody onsite ?
 - ANS: Yes, form can be found in Section 7 of the Bid Manual. Would need to be provided prior to starting construction.



Trask Middle School Renovations
New Hanover County Schools
Wilmington, North Carolina

Pre-Bid Meeting - April 10, 2019 - 4:00pm

SIGN-IN SHEET

	NAME	COMPANY	PHONE #	EMAIL
1	ANDREW YOCUM	T.A. WOODS	910-452-7900	AYOCUM@TAWOODS.COM
2	DAN BROADHEAD	Eastern Environmental	910-329-1129	DB92461@AOL.COM
3	Juan Rios	Curtis Construction	252-523-1078	estimating@curtiscc.com
4	CURTIS E. PALMER	DIVISION 9 INC	910-392-0882	CPALMER@DIV9INC.COM
5	Joshua Ray Runyon	Division 9 Inc	910-990-9017	JRunyon@Div9Inc.com
6	Kim Gordon	NHCS FRC	910.228.0315	kimberly.gordon@nhcs.net
7	DICK SHERWOOD	S293	910.762.0852	doug@s293.com
8				
9				
10				
11				
12				
13				
14				
15				
16				
17				
18				
19				
20				
21				
22				
23				



Trask Middle School Renovations
New Hanover County Schools
Wilmington, North Carolina

Pre-Bid Meeting - April 10, 2019 - 4:00pm

SIGN-IN SHEET

	NAME	COMPANY	PHONE #	EMAIL
44	Duane Peere / Jake Bossmann	Muter Construction	919-375-1135	roofingBids@muterconstruction.com
45	Donnie Autry	Humphrey Mechanical	910-650-6781	dautry@humphreymechanical.com
46	Andy Luce	Hamlin Roofing	919 772 8780	aluce@hamlinco.com
47	Brian Smith	LJ Electrical	858 520 7592	brian.smith@ljconstructioninc.com
48	TOM ELLIOTT	NORTH STATE STEEL	910-462-6825	TELLIOTT@NORTHSTATESTEEL.COM
49	London Williams	NEO Corporation	919-482-6973	lwilliams@neocorporation.com
50	DARIO DA SILVA	ARTISAN PAVING	910-362-4838	artesanpaving@yahoo.com
51	Jeremy Tucker	PWI	910-524-2777	JTucker@prairiewalls.com
52	George Stokes	ENV. HOLDINGS, PC	201-481-1479	gStokes@ehgllc.com
53	Aaron Lawrence	BFPE	910) 431-1038	Alawrence@BFPE.com
54	Tim Barnes	Nationwide Electrical Services	919-736-2655	tim@nationwide-electric.com
55	Jacob Smith	Blind Demolition	(843) 839-1380	JSMITH@BLINDDEMOLITION.COM
56				
57				
58				
59				
60				
61				
62				
63				



Trask Middle School Renovations
New Hanover County Schools
Wilmington, North Carolina

Pre-Bid Meeting - April 10, 2019 - 4:00pm

SIGN-IN SHEET

	NAME	COMPANY	PHONE #	EMAIL
87	JASON Walley	Atlanta Flooring	919-517-5089	jwalley@atlantaflooringdesign.com
88	SANTIAGO FRANCO	MANNING MASONRY	252-814-4918	santiago.manning.masonry@gmail.com
89	BRAD MARTIN	BCC	919-795-6919	bmartin@barnhillcontracting.com
90	MATT CAVE	BCC	252-285-2448	mcave@
91	RUBEN AUVERT	BCC	919-344-6380	rauvvert@
92				
93				
94				
95				
96				
97				
98				
99				
100				
101				
102				
103				
104				
105				
106				
107				
108				
109				

First String Space Modular Buildings (Purchased thru Mobile Modular) – August 2018.

4-Classroom FSSI 6332 A-E (Myrtle Grove to Murray 2019)

6-Classroom FSSI 6333 A-G (Myrtle Grove to Trask 2019)

8-Classroom FSSI 6334 A-I (Roland-Grise)

Finish Schedule

Floor covering – Armstrong VCT – Fortress white 51839

Cove base – NAFCO, Tarkett, Brown CB-37-2, 4" vinyl base, .080"

Walls – Impact resistant gyp board – Continental Building Products.

FRP – Kalwall Corp. – Almond

Interior paint – Sherwin Williams – Summer White SW7557

Ceiling – Armstrong, School zone fine fissured square lay in, White, #1713, 2 x2 x ¾.

Prelude XL, 15/16" exposed tee grid. 7300, XL7348, XL7328 and 7800

Toilet partitions – Accurate, Phenolic color thru, floor anchored, overhead braced, Hazelnut 4450C

Roof – Firestone – UltraPly TPO membrane

Exterior siding/ trim – Timberlake vinyl siding by Kaycan Ltd., Pebblestone on walls, trim is Flagstone.



Trask Middle School Renovations - Bidding RFI LOG

CLOSED

OPEN

RFI #	Requested By:	Title	Description	Date to Architect/ Engineer	Date Returned by Architect	Date Sent to Bidders	Status/Response
001	BCC	Locker Room Gas Lines	Will the gas piping be installed within the locker room regardless if alternate G-2 is taken or not?	4/3/2019	4/3/2019	Addendum #1	Yes, gas piping shall be installed as indicated on the plans, regardless of which alternates are taken. If a roof top unit is not installed due to an alternate not being taken, gas piping shall be valved can capped above roof for future installation.
002	BCC	Signage	1. Specification 10 1400 SIGNAGE details "Emergency Evacuation Maps" in the 1.1 C. summary section. This is not found elsewhere in the spec section or in the drawings. Please clarify if any EVAC maps / map holders are required as part of the BP1010 Scope. If so, please provide a quantity, specifications, and drawings (including size and construction) of the holder and clarification on who is responsible for the content, design, and/or printing/installation of any required inserts. 2. Specification 10 1400 SIGNAGE details "Interior Directional and Informational Signs" as part of the 2.2 C. section. No sizes, drawings, construction, or quantity are detailed for bidding purposes. Please clarify if any Interior Directional and Informational Signage is required as part of the BP1010 Scope. If so, please provide a quantity and drawings (including size and construction) of the required signs. 3. Specification 10 1400 SIGNAGE details "Room and Door Signs" in the 2.2 B. section. This includes signs for Office Doors w/ Window Inserts, Conference and Meeting Rooms w/ "In Use" Signs, and Restroom Signage in addition to what is drawn. Drawing 6/A6.0 only details an unspecified Room Number (only) sign and a Service Room sign (dx6). Please clarify which signs types are to be bid and provide a schedule of all required signs for bidding purposes. 4. Please clarify if signage will be replaced in the "Athletic Support Spaces" per Alt. G-2 regardless of the acceptance of the Alternate.	4/3/2019	4/3/2019	Addendum #1	Section 11 1400, Part 1 General, 1.1 Section includes Delete Item B. Interior directional and informational signs. Delete Item C. Emergency evacuation signs. Add Item E. Maximum occupancy signs. (3 pair, 6 total) Section 11 1400, Part 2 Signage Applications, B. Room and Door Signs, 4. Sign Height a. Signs with room numbers only: 2 inches. Shall be used for Mechanical Rooms (M1), Electrical Rooms (E1), Data/ Communication Rooms (I1) b. Signs with room names or other additional information: 6 inches. Shall be used for all classroom spaces. Section 11 1400, Part 2 Signage Applications, B. Room and Door Signs, 5. Office Doors Shall be the same as the 6 inch sign except omit room name and provide window Signage is to including the Athletic Support Spaces as part of the base bid.
003	BCC	Painting	Will the locker room be painted regardless if the Alternate G-2 is taken?	4/3/2019	4/3/2019	Addendum #1	No, if the alternate is not taken then no painting is required in the locker rooms.
004	BCC	Need for Impact Glazing	In the Aluminum Window and Doors specification there is no mention of this job requiring any impact glazing. Can you confirm this is correct please.	4/4/2019	4/4/2019	Addendum #1	Impact glazing is not specified because it is not required.
005	BCC	Exterior Brick Sealant	Please advise if the existing caulk sealants are to be cutout and replaced prior to the exterior brick cleaning and sealant. The brick sealants are for masonry only.	4/4/2019	4/6/2019	Addendum #1	Existing brick sealant joints are to be cut out and replaced. This scope consist of roughly 23 locations in the low wall conditions (+/- 10' long each) and 3 locations in the high wall gym condition (+/- 22' long each).
006	BCC	New Meter Size	1. Based on 4.9.19 email from Chestham it is suspected that we will need to install a new 3" meter at trask to supply the fixtures. Please advise the following: a. Will there need to be a new service tap installed back to the CFPUA main? b. Will a new C 5.0 sheet be issued to show replacement of existing meter	4/10/2019			
007	BCC	Fiber Requirements	1. On print E7.3 Detail A there is a note to re-route the fiber optic cable. Please can you provide the following information? a. Quantity of fiber strands b. Is the fiber optic cable single mode or multimode (OM1, OM3 or OM3)?	4/10/2019	4/12/2019	Addendum #1	From the records we have, we believe this to be 12 strand single mode fiber. See photo below.
008	BCC	Division 10 questions	1. Inpro's Endurant Toilet Partitions are Solid Surface material. Please Advise if the intention is for Solid Surface or Solid Plastic (HDPE) Toilet Partitions - per spec section 102113. 2. Toilet Accessory Spec Section 102800 call for Sanitary Napkin Disposal basis of design as a Grab Bar product number. Please advise correct Sanitary Napkin basis-of-design. 3. Spec Section 101101 Dry Erase Walls in Media Center are not clear. Is the intention to have (3) Dry Erase panels 48" wide to cover 120" length in Group Study? Dry Erase walls will be 80" high. Confirm please. 4. Additional tackboard noted in Media Center. Please advise size.	4/10/2019	4/11/2019	Addendum #1	1. Toilet partitions are to be HDPE tested in accordance with NFPA 286. If Inpro does not make this type of partition system, then they should be removed from the specification as we would still be left with 3 approved manufacturers. 2. Please modify Specification Section 10 2800, 2.4 Commercial Toilet Accessories, E. 1. Product: 8254 Series by Bolarick. 3. Yes, the intention in the Media Center Group Study Area is to use (3) 48 by 96 dry erase panels, buttled joints with a frame around the perimeter of the the 3. This may require cutting 1 panel to properly fit on the wall. End result should appear as a continuous 12x8' section of writable wall surface. 4. Please revise Specification Section 10 1101, Part 3 Execution, 3.4 Schedule, B. Media Center to include: 3. 200A - Media Center: One 48 x 48 tackboard.
009	BCC						
010	BCC						
011	BCC						
012	BCC						
013	BCC						
014	BCC						



**BARNHILL
CONTRACTING
COMPANY**

REQUEST FOR INFORMATION

RFI Number:
RFI #0001

Project: Trask Middle School Ren No: 1102018

Location: Locker room renovation

Request Date: 4.3.19

Response Needed By: _____

Subject: Locker Room gas lines

From: Barnhill

Contract For: _____

Subcontract For: N/A

To: Doug Sherwood

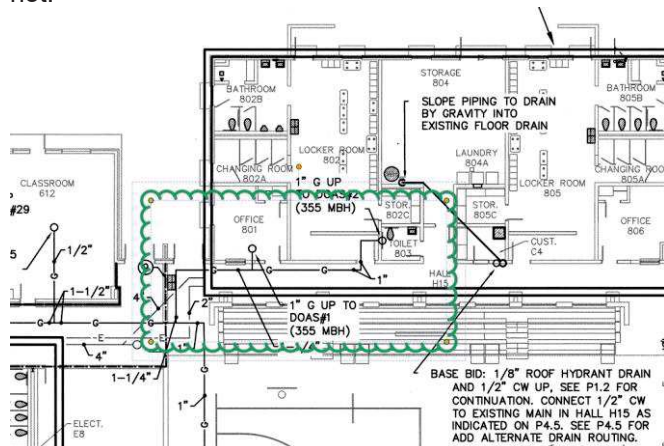
Attn: _____

Project Implications: Cost ☐ Time ☐ Information Only

Reference: Drawing Number: P1.1 Detail Number: NA Specification Volume/Section: _____

Information Needed:

Will the gas piping be installed within the locker room regardless if alternate G-2 is taken or not.



Contractor Recommendation:

Submitted by: Matt Cave

Date: 4.3.19

Response: ☐ Proceed with recommendation ☒ Proceed with the following instructions:

Yes, gas piping shall be installed as indicated on the plans, regardless of which alternates are taken. If a roof top unit is not installed due to an alternate not being taken, gas piping shall be valved can capped above roof for future installation.

Casey Gilman, PE LEED AP

Date: 4/3/19



**BARNHILL
CONTRACTING
COMPANY**

REQUEST FOR INFORMATION

RFI Number:

RFI #0002

Project: Trask Middle School Ren No: 1102018

Location: Entire school

Request Date: 4.3.19

Response Needed By: _____

Subject: Signage

From: Barnhill

Contract For: _____

Subcontract For: N/A

To: Doug Sherwood

Attn: _____

Project Implications: Cost ☐ Time ☐ Information Only

Reference: Drawing Number: _____ Detail Number: NA Specification
Volume/Section: 10 1400

Information Needed:

1. Specification 10 1400 SIGNAGE details "Emergency Evacuation Maps" in the 1.1 C. summary section. This is not found elsewhere in the spec section or in the drawings. Please clarify if any EVAC maps / map holders are required as part of the BP1010 Scope. If so, please provide a quantity, specifications, and drawings (including size and construction) of the holder and clarification on who is responsible for the content, design, and/or printing/installation of any required inserts.
2. Specification 10 1400 SIGNAGE details "Interior Directional and Informational Signs" as part of the 2.2 C. section. No sizes, drawings, construction, or quantity are detailed for bidding purposes. Please clarify if any Interior Directional and Informational Signage is required as part of the BP1010 Scope. If so, please provide a quantity and drawings (including size and construction) of the required signs.
3. Specification 10 1400 SIGNAGE details "Room and Door Signs" in the 2.2 B. section. This includes signs for Office Doors w/ Window Inserts, Conference and Meeting Rooms w/ "In Use" Sliders, and Restroom Signage in addition to what is drawn. Drawing 6/A6.0 only details an unspecified Room Number (only) sign and a Service Room sign (6x6). Please clarify which signs types are to be bid and provide a schedule of all required signs for bidding purposes.
4. Please clarify if signage will be replaced in the "Athletic Support Spaces" per Alt. G-2 regardless of the acceptance of the Alternate.

Contractor Recommendation:

Submitted by: Matt Cave Date: 4.3.19

Response: ☐ Proceed with recommendation ☐ Proceed with the following instructions:

Section 11 11400, Part 1 General, 1.1 Section Includes

Delete item B. Interior directional and informational signs.

Delete item C. Emergency evacuation signs.

Add item E. Maximum occupancy signs. (3 pair, 6 total)

Section 11 1400, Part 2 Signage Applications, B. Room and Door Signs, 4. Sign Height

a. Signs with room numbers only: 2 inches.

Shall be used for Mechanical Rooms (M1), Electrical Rooms (E1), Data/
Communication Rooms (T1)

b. Signs with room names or other additional information: 6 inches.

Shall be used for all classroom spaces.

Section 11 1400, Part 2 Signage Applications, B. Room and Door Signs, 5. Office Doors

Shall be the same as the 6 inch sign except omit room name and provide window

Signage is to including the Athletic Support Spaces as part of the base bid.

Doug Sherwood, AIA

Date: 4/3/19

cc: BCC Project w/File

Architect/Engineer's Signature



**BARNHILL
CONTRACTING
COMPANY**

REQUEST FOR INFORMATION

RFI Number:
RFI #0003

Project: Trask Middle School Ren No: 1102018

Location: Locker Room G-2

Request Date: 4.3.19

Response Needed By: _____

Subject: Painting

From: Barnhill

Contract For: _____

Subcontract For: N/A

To: Doug Sherwood

Attn: _____

Project Implications: Cost ☐ Time ☐ Information Only

Reference: Drawing Number: _____

Detail Number: NA

Specification

Volume/Section: _____

Information Needed:

1. Will the locker room be painted regardless if the alternate G-2 is taken?

Contractor Recommendation:

Submitted by: Matt Cave

Date: 4.3.19

Response: ☐ Proceed with recommendation ☐ Proceed with the following instructions:

No, if the alternate is not taken then no painting is required in the locker rooms.

cc: BCC Project w/File

Doug Sherwood, AIA
Architect/Engineer's Signature

Date: 4/3/19



**BARNHILL
CONTRACTING
COMPANY**

REQUEST FOR INFORMATION

RFI Number:

RFI #0004

Project: Trask Middle School Ren No: 1102018

Location: Building

Request Date: 4.4.19

Response Needed By: _____

Subject: Need for impact glazing

From: Barnhill

Contract For: _____

Subcontract For: N/A

To: Doug Sherwood

Attn: _____

Project Implications: Cost ☐ Time ☐ Information Only

Reference: Drawing Number: _____

Detail Number: NA

Specification

Volume/Section: _____

Information Needed:

1. In the aluminum windows and doors specifications there is no mention of this job requiring any impact glazing. Can you confirm this is correct please.

Contractor Recommendation:

Submitted by: Matt Cave

Date: 4.4.19

Response: ☐ Proceed with recommendation ☐ Proceed with the following instructions:

Impact glazing is not specified because it is not required.

Doug Sherwood, AIA

Date: 4/5/19

cc: BCC Project w/File

Architect/Engineer's Signature



**BARNHILL
CONTRACTING
COMPANY**

REQUEST FOR INFORMATION

RFI Number:
RFI #0005

Project: Trask Middle School Ren No: 1102018

Location: Building

Request Date: 4.4.19

Response Needed By: _____

Subject: Exterior brick sealant

From: Barnhill

Contract For: _____

Subcontract For: N/A

To: Doug Sherwood

Attn: _____

Project Implications: Cost ☐ Time ☐ Information Only

Reference: Drawing Number: _____ Detail Number: NA Specification
Volume/Section: _____

Information Needed:

1. Please advise if the existing exterior caulk sealants are to be cutout and replaced prior to the exterior brick cleaning and sealant. The brick sealants are for masonry only.

Contractor Recommendation:

Submitted by: Matt Cave Date: 4.4.19

Response: ☐ Proceed with recommendation ☒ Proceed with the following instructions:

Existing brick sealant joints are to be cut out and replaced. This scope consist of roughly 23 locations in the low wall conditions (+/- 10' long each) and 3 locations in the high wall gym condition (+/- 22' long each).

Doug Sherwood, AIA

Date: 4/8/19

cc: BCC Project w/File

Architect/Engineer's Signature



**BARNHILL
CONTRACTING
COMPANY**

REQUEST FOR INFORMATION

RFI Number:

RFI #0007

Project: Trask Middle School Ren No: 1102018

Location: Building electrical

Request Date: 4.10.19

Response Needed By: _____

Subject: Fiber Requirements

From: Barnhill

Contract For: _____

Subcontract For: N/A

To: Doug Sherwood

Attn: _____

Project Implications: Cost ☐ Time ☐ Information Only

Reference: Drawing Number: _____ Detail Number: NA Specification
Volume/Section: _____

Information Needed:

1. On print E7.3 Detail A there is a note to re-route the fiber optic cable. Please can you provide the following information?
 - a. Quantity of fiber strands
 - b. Is the fiber optic cable single mode or multimode (OM1, OM3 or OM3)?

Contractor Recommendation:

Submitted by: Matt Cave Date: 4.10.19

Response: ☐ Proceed with recommendation ☐ Proceed with the following instructions:

CHEATHAM RESPONSE:

From the records we have, we believe this to be 12 strand single mode fiber. See photo below.

Mark A. Ciarrocca April 11, 2019



cc: BCC Project w/File

Architect/Engineer's Signature



**BARNHILL
CONTRACTING
COMPANY**

REQUEST FOR INFORMATION

RFI Number:

RFI #0008

Project: Trask Middle School Ren No: 1102018

Location: Building accessories

Request Date: 4.10.19

Response Needed By: _____

Subject: Division 10 questions

From: Barnhill

Contract For: _____

Subcontract For: N/A

To: Doug Sherwood

Attn: _____

Project Implications: Cost ☐ Time ☐ Information Only

Reference: Drawing Number: _____

Detail Number: NA

Specification

Volume/Section: _____

Information Needed:

1. Inpro's Endurant Toilet Partitions are Solid Surface material. Please Advise if the intention is for Solid Surface or Solid Plastic (HDPE) Toilet Partitions - per spec section 102113.
2. Toilet Accessory Spec Section 102800 call for Sanitary Napkin Disposal basis of design as a Grab Bar product number. Please advise correct Sanitary Napkin basis-of-design.
3. Spec Section 101101 Dry Erase Walls in Media Center are not clear. Is the intention to have (3) Dry erase panels 48" wide to cover 12'0" length in Group Study? Dry Erase walls will be 8'0" high. Confirm please.
4. Additional Tackboard noted in Media Center. Please advise size.

Contractor Recommendation:

Submitted by: Matt Cave

Date: 4.10.19

Response: ☐ Proceed with recommendation ☒ Proceed with the following instructions:

1. Toilet partitions are to be HDPE tested in accordance with NFPA 286. If Inpro does not make this type of partition system, then they should be removed from the specification as we would still be left with 3 approved manufacturers.
2. Please modify Specification Section 10 2800, 2.4 Commercial Toilet Accessories, E, 1. Product: B254 Series by Bobrick.
3. Yes, the intention in the Media Center Group Study Area is to use (3) 48 by 96 dry erase panels butted joints with a frame around the perimeter of the the 3. This may require cutting 1 panel to properly fit on the wall. End result should appear as a continuous 12'x8' section of writable wall surface.
4. Please revise Specification Section 10 1101, Part 3 Execution, 3.4 Schedule, B. Media Center to include: 3. 200A - Media Center: One 48 x 48 tackboard.

Doug Sherwood, AIA

Date: 4/11/19

cc: BCC Project w/File

Architect/Engineer's Signature

Trask Middle School Demo Delineation Plan Addendum #1

SUBSTITUTION REQUEST

(During the Bidding/Negotiating Stage)

Project: <u>Trask Middle School (Renovations) (16-718974)</u>	Substitution Request Number: <u>SubReq-03161</u>	
<u>WILMINGTON, NC</u>	From: <u>Courtney Damore, Scranton Products</u>	
To: <u>Debrielle Boone, Barnhill Contracting</u>	Date: <u>04/03/2019</u>	
<u>dboone@barnhillcontracting.com, (919) 781-7210</u>	A/E Project Number: _____	
Re: <u>Plastic Toilet Compartments</u>	Contract For: <u>New Hanover County Board of Education</u>	

Specification Title: <u>Plastic Toilet Compartments</u>	Description: <u>Manufacturers</u>	
Section: <u>10 2113.19</u> Page: <u>1</u>	Article/Paragraph: <u>2.1</u>	

Proposed Substitution: <u>Hiny Hiders Solid Plastic</u>			
Manufacturer: <u>Scranton Products</u>	Address: <u>scrantonproducts.com</u>	Phone: <u>570-348-0997</u>	
Trade Name: <u>Scranton Hiny Hiders Solid Plastic</u>		Model No.: <u>N/A</u>	

Attached data includes product description, specifications, drawings, photographs, and performance and test data adequate for evaluation of the request; applicable portions of the data are clearly identified.

Attached data also includes a description of changes to the Contract Documents that the proposed substitution will require for its proper installation.

The Undersigned certifies:

- Proposed substitution has been fully investigated and determined to be equal or superior in all respects to specified product.
- Same warranty will be furnished for proposed substitution as for specified product.
- Same maintenance service and source of replacement parts, as applicable, is available.
- Proposed substitution will have no adverse effect on other trades and will not affect or delay progress schedule.
- Proposed substitution does not affect dimensions and functional clearances.

Submitted by: <u>Courtney Damore</u>
Signed by: <u>Courtney Damore</u>
Firm: <u>Scranton Products</u>
Address: <u>801 E. Corey Street</u>
<u>Scranton, Pennsylvania 18504</u>
Telephone: <u>(570) 348-0997 ext. 8032, courtney.damore@azekco.com</u>

A/E' s REVIEW AND ACTION

- ☒ Substitution approved - Make submittals in accordance with Specification Substitution Procedures.
- ☐ Substitution approved as noted - Make submittals in accordance with Specification Substitution Procedures.
- ☐ Substitution rejected - Use specified materials.
- ☐ Substitution Request received too late - Use specified materials.

Signed by: Doug Sherwood, AIA

Date: 4/12/19

Supporting Data Attached:	<input type="checkbox"/> Drawings	<input type="checkbox"/> Product Data	<input type="checkbox"/> Samples	<input type="checkbox"/> Tests	<input type="checkbox"/> Reports	<input type="checkbox"/> _____
---------------------------	-----------------------------------	---------------------------------------	----------------------------------	--------------------------------	----------------------------------	--------------------------------

SUBSTITUTION REQUEST

(During the Bidding/Negotiating Stage)

Project: <u>Trask Middle School (Renovations) (16-718974)</u>	Substitution Request Number: <u>SubReq-03162</u>	
<u>WILMINGTON, NC</u>	From: <u>Courtney Damore, Scranton Products</u>	
To: <u>Debrielle Boone, Barnhill Contracting</u>	Date: <u>04/03/2019</u>	
<u>dboone@barnhillcontracting.com, (919) 781-7210</u>	A/E Project Number: _____	
Re: <u>Lockers</u>	Contract For: <u>New Hanover County Board of Education</u>	

Specification Title: <u>Lockers</u>	Description: <u>Manufacturers</u>
Section: <u>10 5100</u> Page: <u>1</u>	Article/Paragraph: <u>2.1</u>

Proposed Substitution: <u>Tufftec Bench</u>			
Manufacturer: <u>Scranton Products</u>	Address: <u>scrantonproducts.com</u>	Phone: <u>570-348-0997</u>	
Trade Name: <u>Scranton Tufftec Bench</u>		Model No.: <u>N/A</u>	

Attached data includes product description, specifications, drawings, photographs, and performance and test data adequate for evaluation of the request; applicable portions of the data are clearly identified.

Attached data also includes a description of changes to the Contract Documents that the proposed substitution will require for its proper installation.

The Undersigned certifies:

- Proposed substitution has been fully investigated and determined to be equal or superior in all respects to specified product.
- Same warranty will be furnished for proposed substitution as for specified product.
- Same maintenance service and source of replacement parts, as applicable, is available.
- Proposed substitution will have no adverse effect on other trades and will not affect or delay progress schedule.
- Proposed substitution does not affect dimensions and functional clearances.

Submitted by: <u>Courtney Damore</u>
Signed by: <u>Courtney Damore</u>
Firm: <u>Scranton Products</u>
Address: <u>801 E. Corey Street</u>
<u>Scranton, Pennsylvania 18504</u>
Telephone: <u>(570) 348-0997 ext. 8032, courtney.damore@azekco.com</u>

A/E' s REVIEW AND ACTION

- ☐ Substitution approved - Make submittals in accordance with Specification Substitution Procedures.
- ☐ Substitution approved as noted - Make submittals in accordance with Specification Substitution Procedures.
- ☒ Substitution rejected - Use specified materials.
- ☐ Substitution Request received too late - Use specified materials.

Signed by: Doug Sherwood, AIA

Date: 4/12/19

Supporting Data								
Attached:	<input type="checkbox"/> Drawings	<input type="checkbox"/> Product Data	<input type="checkbox"/> Samples	<input type="checkbox"/> Tests	<input type="checkbox"/> Reports	<input type="checkbox"/>	<input type="checkbox"/>	<input type="checkbox"/>

While not data was provided for review a quick online review revealed that these are HDPE benches. Laminated maple are specified. This does not meet the specification.