

8/1/2019 3:14:10 PM
C:\next\Projects\0172_UNCW_Parking_Deck_IL_F17_hvacna@clarknexsen.com\vt

1

2

3

4

5

6

FIRE ALARM LEGEND

FACP	FIRE ALARM CONTROL PANEL
NAC	NOTIFICATION APPLIANCE CIRCUIT PANEL
H	HEAT DETECTOR, CEILING MOUNTED
S	SMOKE DETECTOR, CEILING MOUNTED
CM	CONTACT MONITOR MODULE
F	MANUAL PULL STATION, MOUNT 4'-0" AFF
DACT	DIGITAL ALARM COMMUNICATOR TRANSMITTER

ABBREVIATIONS

O.C.	ON CENTER
EP	ELECTRICAL POWER (120V AC)
WP	WEATHERPROOF / OUTDOOR RATED (SUBSCRIPT)
C	CEILING MOUNTED (SUBSCRIPT)
E	EXISTING (SUBSCRIPT)
FACP	FIRE ALARM CONTROL PANEL

GENERAL NOTES

- DEDICATED FUNCTION FIRE ALARM SYSTEM SHALL BE INSTALLED IN ACCORDANCE WITH NFPA 72 - 2013 EDITION. PROVIDE WIRING AS RECOMMENDED BY MANUFACTURER.
- COORDINATE FIRE ALARM SYSTEM WITH ALL TRADES TO ENSURE PROPER COMPLIANCE WITH CODES AND TO AVOID CONFLICTS.
- IN AREAS WITH LAY-IN CEILING TILES, INSTALL CEILING MOUNTED FIRE ALARM DEVICES CENTER OF TILE.
- NO PIPE PENETRATIONS OF STRUCTURAL MEMBERS, EXCEPT AS NOTED, ARE PERMITTED WITHOUT THE APPROVAL OF THE ARCHITECT/ENGINEER.
- ALL FIRE ALARM APPLIANCES, DEVICES, BACKBOXES, AND JUNCTION BOXES NOT LOCATED IN A FULLY CONDITIONED SPACE (BOTH HEATED AND COOLED) MUST BE OUTDOOR RATED, INCLUDING ITEMS INSIDE OF ROOMS.

1

NO SCALE

DEDICATED FUNCTION FIRE ALARM SYSTEM SEQUENCE OF OPERATION MATRIX

SYSTEM INPUT	SYSTEM OUTPUT	ACTIVATE COMMON ALARM SIGNAL INDICATOR	ACTIVATE AUDIBLE ALARM SIGNAL	ACTIVATE COMMON SUPERVISORY SIGNAL	ACTIVATE COMMON SUPERVISORY SIGNAL INDICATOR	DISP. AUDIBLE TROUBLE SIGNAL	TRANSMIT ALARM TROUBLE SIGNAL	TRANSMIT ALARM TROUBLE SIGNAL	TRANSMIT SUPERVISORY SIGNAL TO RECEIVING STATION	RECALL ELEVATOR TO 1ST FLOOR	RECALL ELEVATOR TO 2ND FLOOR	ILLUMINATE FIRE HAZ (FLASH)
MANUAL PULL STATION												
AREA SMOKE DETECTOR												
AREA SMOKE DETECTOR (ELEV. MACH. ROOM)												
HEAT DETECTOR (1ST FLR ELEV. LANDING)												
HEAT DETECTOR (OTHER FLR ELEV. LANDING)												
STANDPIPE ISOLATION VALVE TAMPER SWITCH												
OPEN CIRCUIT												
GROUND FAULT												

2

NO SCALE

DEDICATED FUNCTION FIRE ALARM SYSTEM RISER DIAGRAM

NOTES:

- COORDINATE WITH SPRINKLER CONTRACTOR FOR QUANTITY OF FLOW AND TAMPER SWITCH MONITORING POINTS AND THEIR EXACT LOCATION.
- RISER DIAGRAM IS FOR REFERENCE ONLY. DEVICE LOCATIONS AND QUANTITIES SHALL BE AS SHOWN ON THE FLOOR PLANS.

3

NO SCALE

ELEVATOR FIRE PROTECTION DIAGRAM

ELEVATOR NOTES

- DETECTOR FOR PRIMARY FLOOR RECALL.
- DETECTOR FOR ALTERNATE FLOOR RECALL.

UNCW

UNIVERSITY of NORTH CAROLINA WILMINGTON

601 S COLLEGE ROAD

WILMINGTON, NORTH CAROLINA 28403

PARKING DECK II AND SURFACE

PARKING (DESIGN-BUILD)

SOUTH CAMPUS - 4965 RIEGEL ROAD

SCO ID NUMBER: 18-19226-01A
CODE: 41828
ITEM: 301

CONTRACTOR

Balfour Beatty

Construction

DESIGNER

CLARK NEXSEN

1523 ELIZABETH AVENUE, SUITE 300

CHARLOTTE, NORTH CAROLINA 28204

704-377-8800

CLARK NEXSEN LICENSE NUMBER: C-1028

CONSULTANTS

WALKER

CONSULTANTS

13660 Ballantyne Corporate Place
Suite 140
Charlotte, NC 28277
T: 704.247.6230
www.walkerconsultants.com
NC License No. F-0518

MCKIM&CREED

CIVIL ENGINEER
243 NORTH FRONT STREET
WILMINGTON, NORTH CAROLINA
28401
910.343.1048

PROFESSIONAL SEAL

CLARK NEXSEN, INC.

CERT. NO. 50680

NORTH CAROLINA

SEAL

041524

2019-08-01 15:14:53-04'08"

CHARLES E. CRAMER

NC CORPORATE ENGINEERING LICENSE #C-1028

SUBMITTAL

August 1, 2019

BID DOCUMENTS

REVISIONS

KEY PLAN

SHEET

FIRE ALARM LEGEND NOTES AND DETAILS

FA001

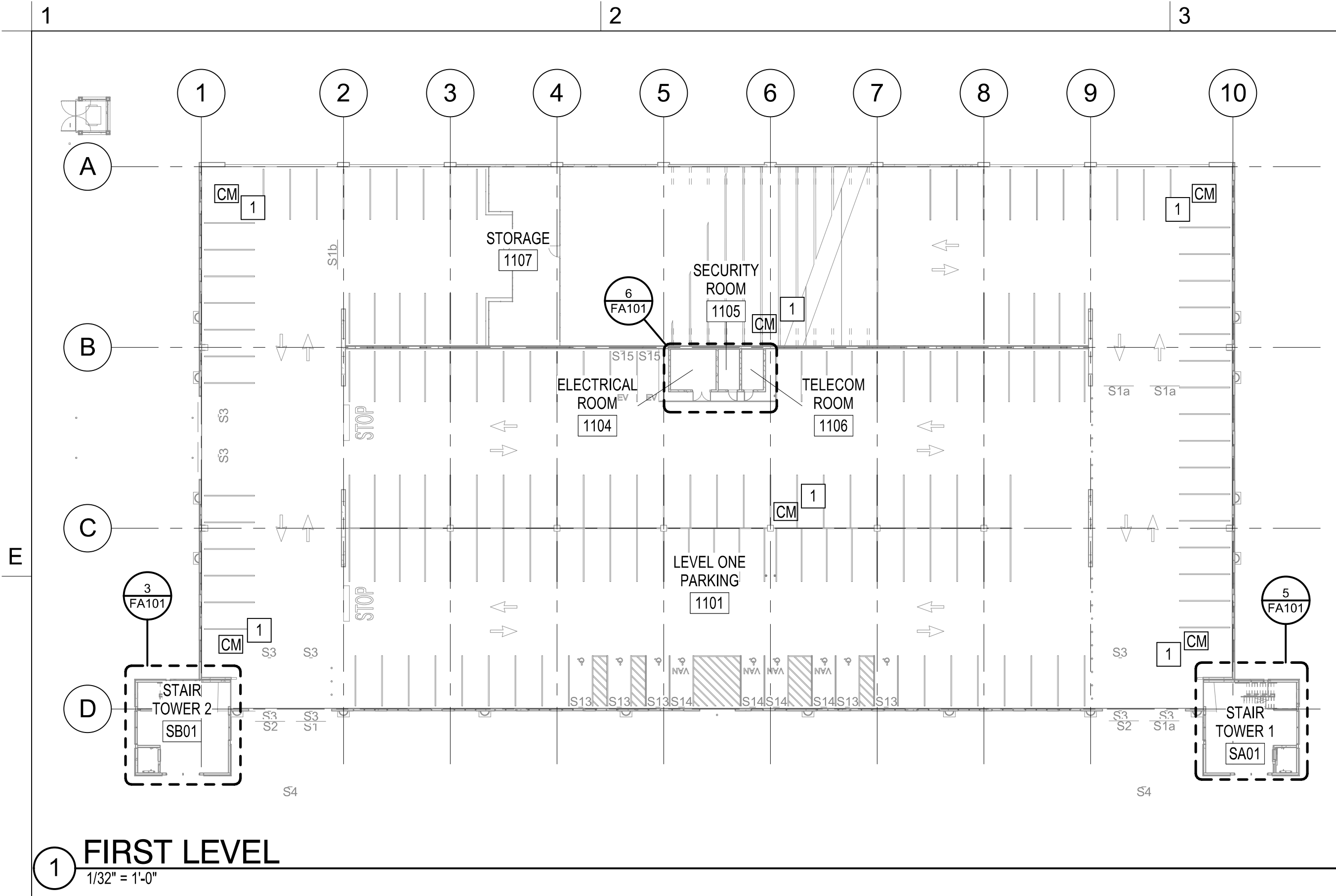
DESIGN: Designer

DRAWN: Author

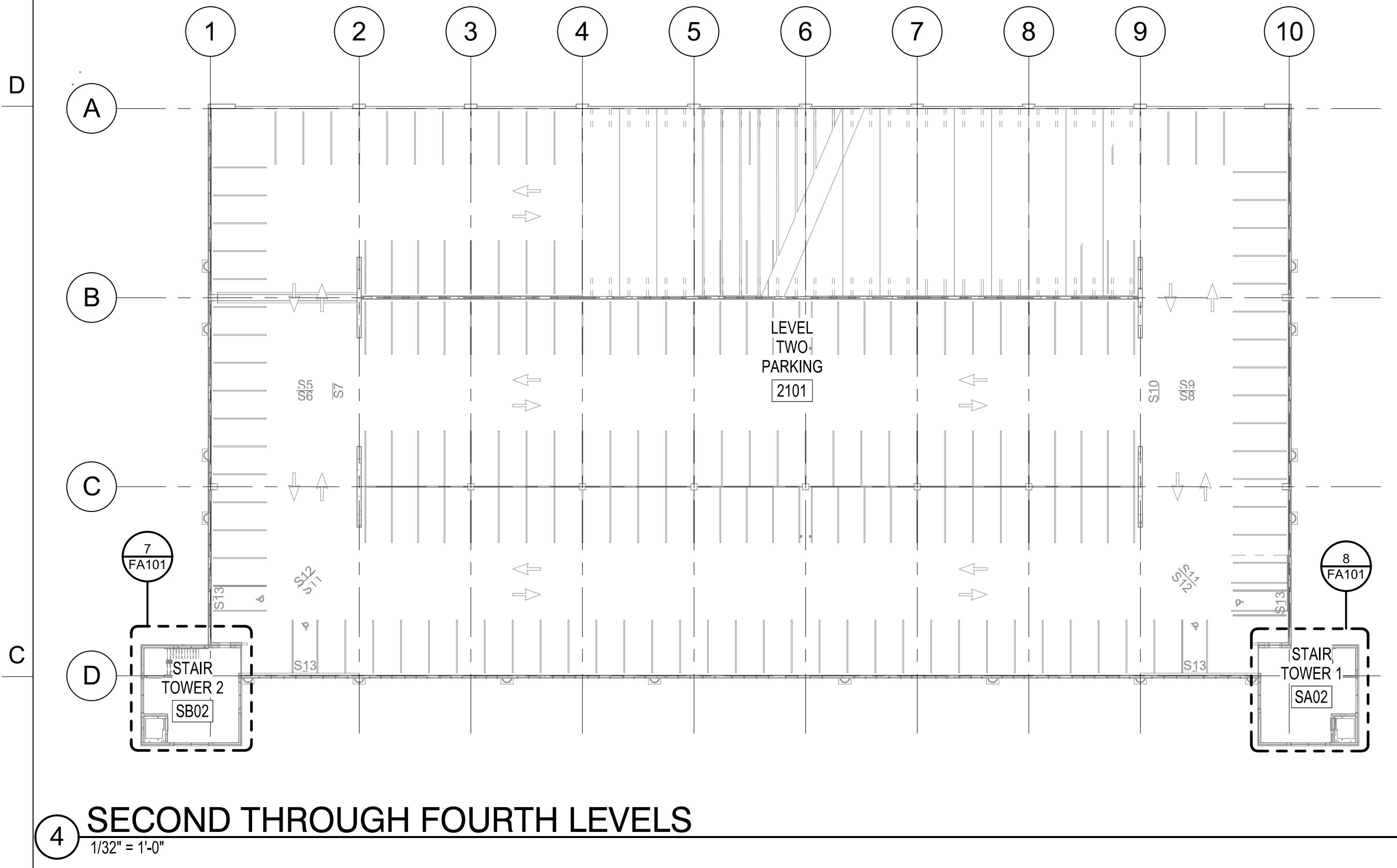
REVIEW: Checker

CN 8112

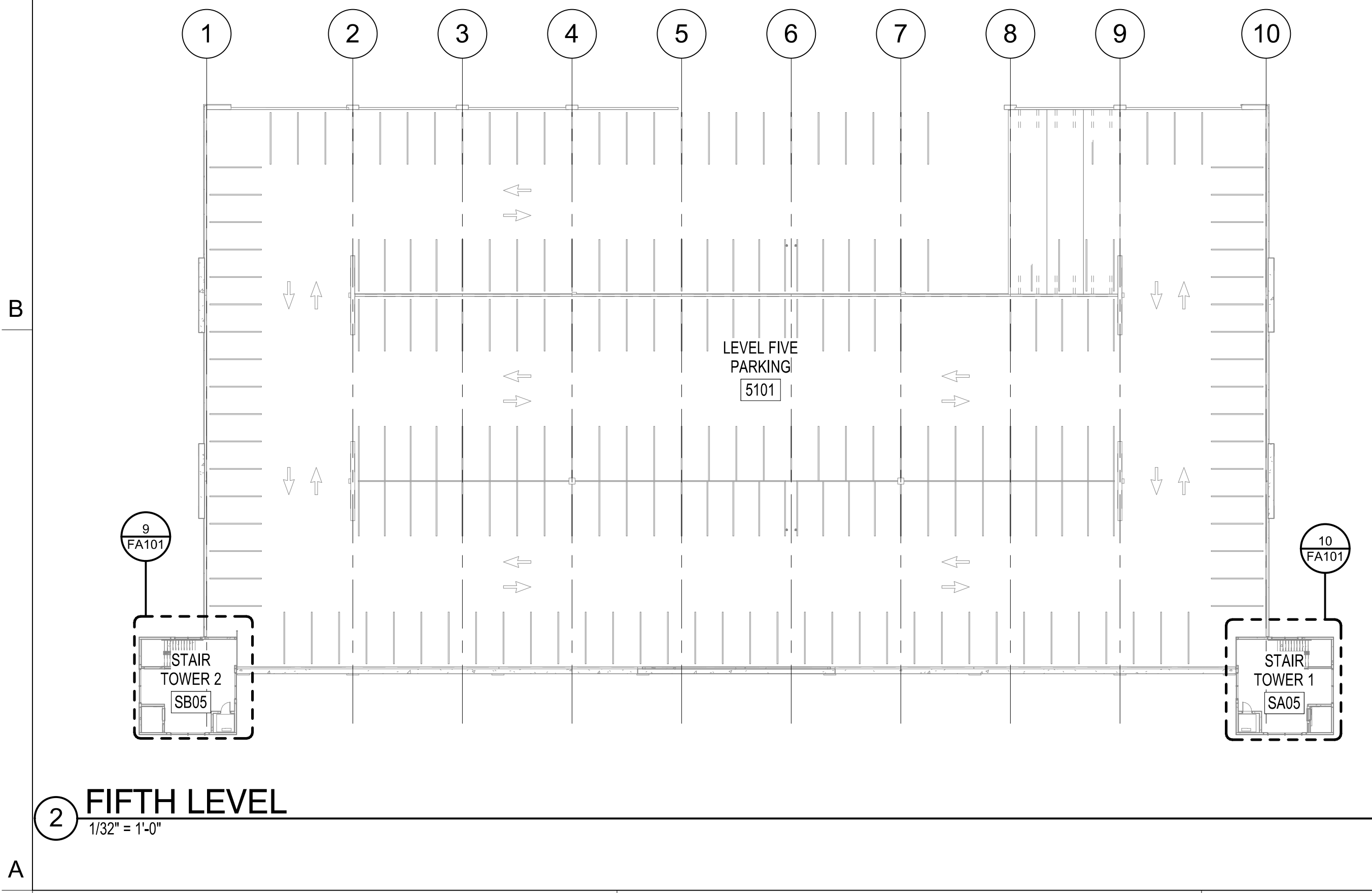
8/1/2019 3:14:13 PM
C:\next_projects\012_UNCW_Parking_Deck_IL_F17_knexus@clarknexus.com.vrt



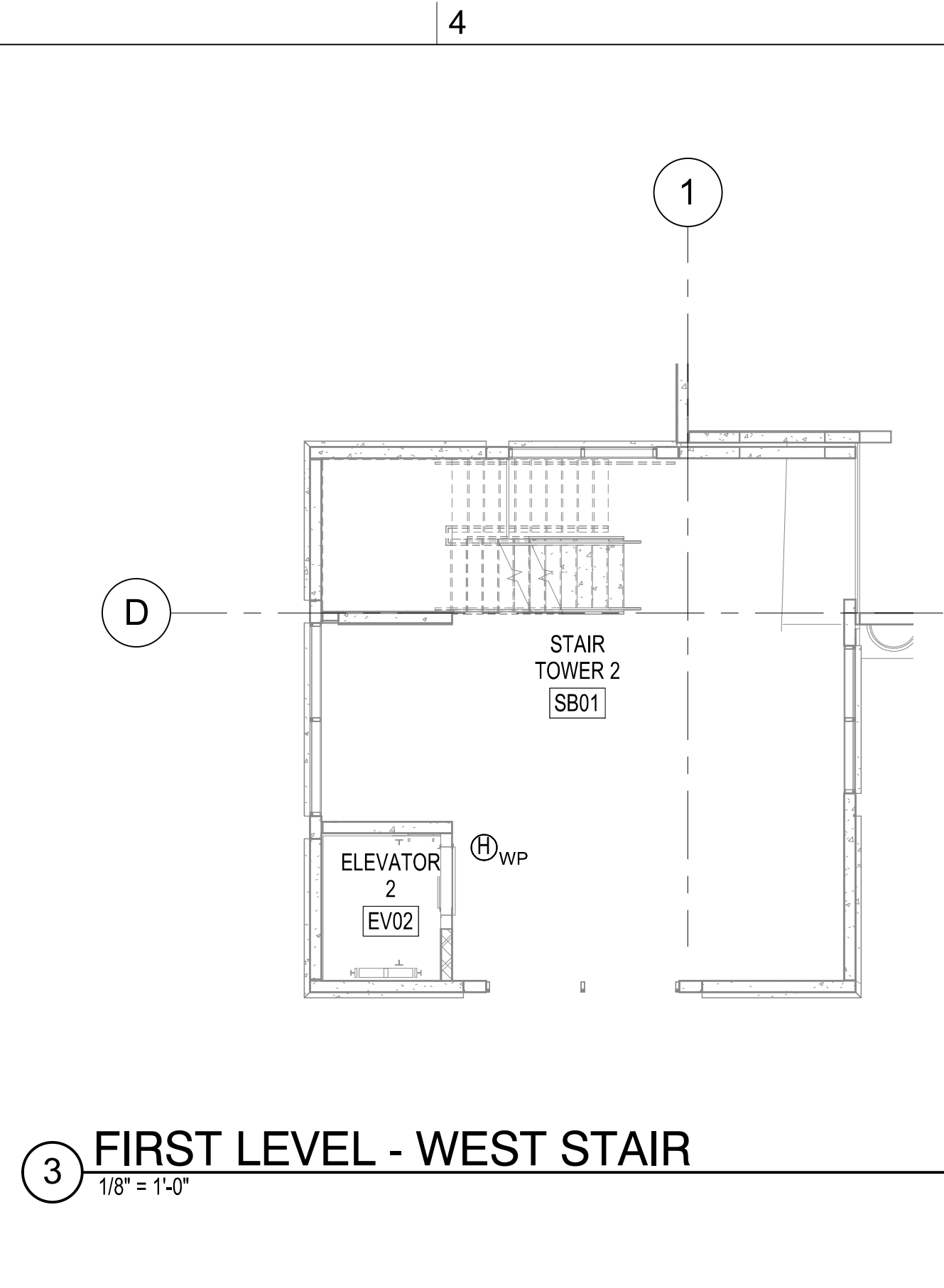
1 FIRST LEVEL
1/32" = 1'-0"



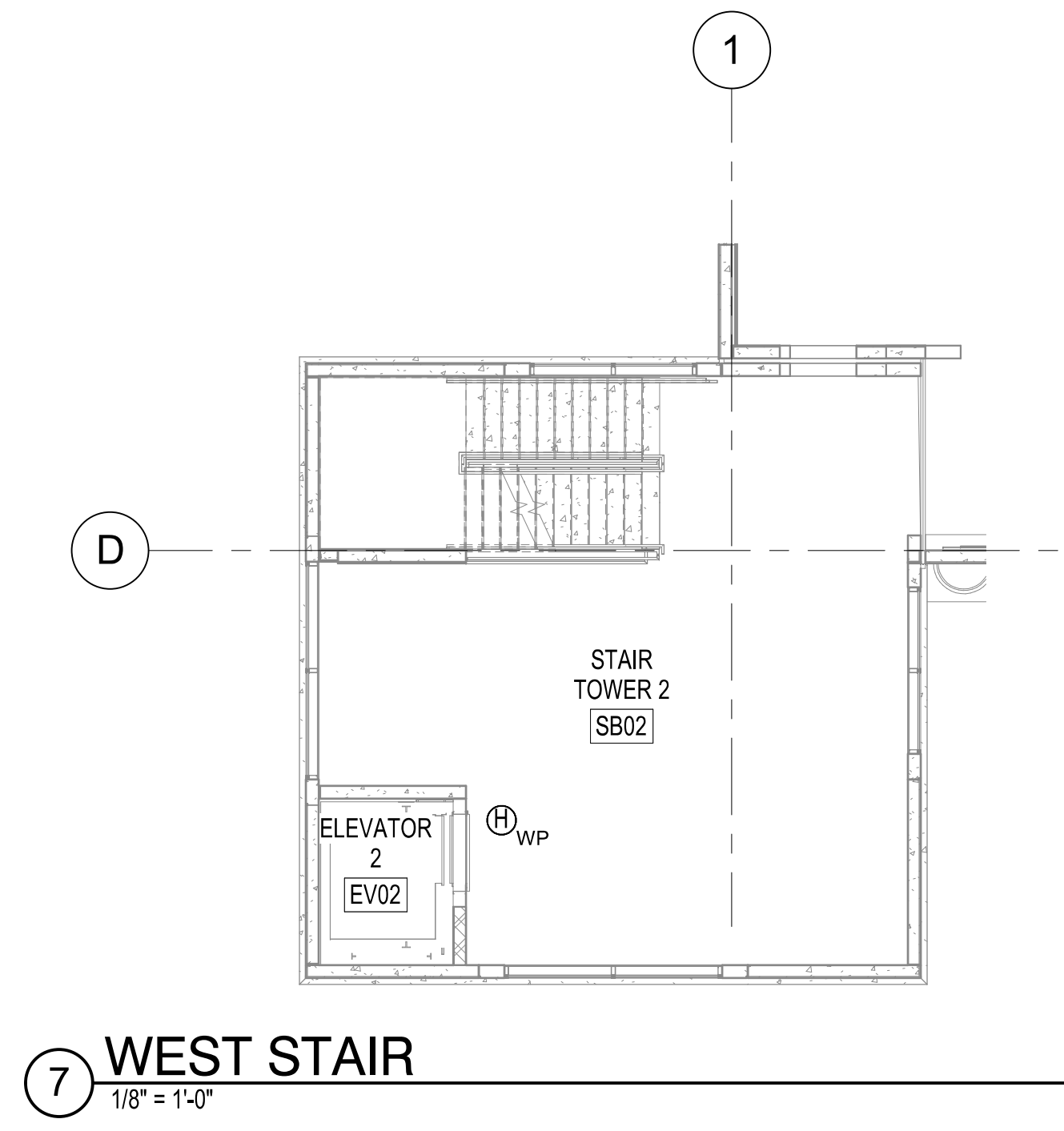
4 SECOND THROUGH FOURTH LEVELS
1/32" = 1'-0"



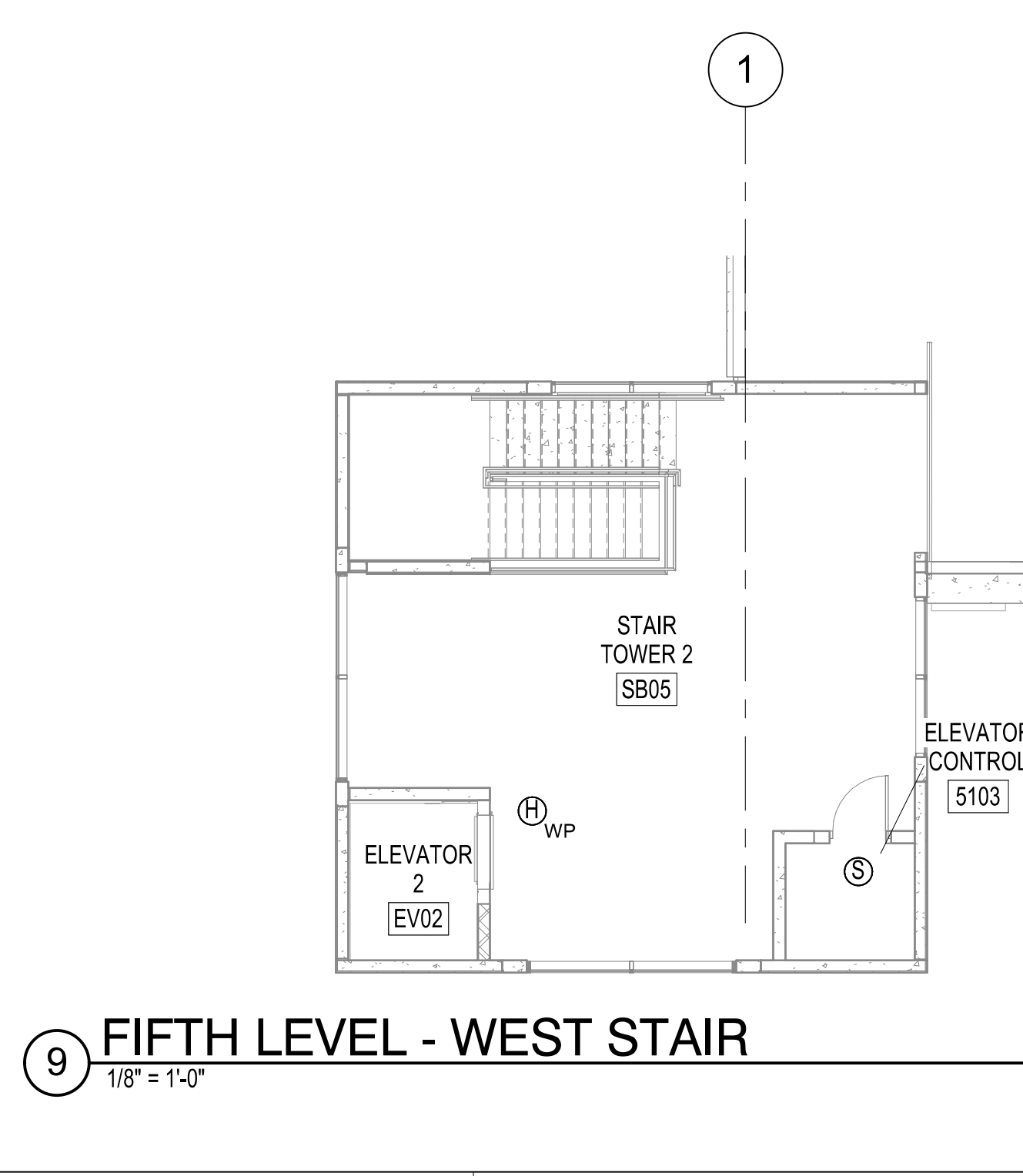
2 FIFTH LEVEL
1/32" = 1'-0"



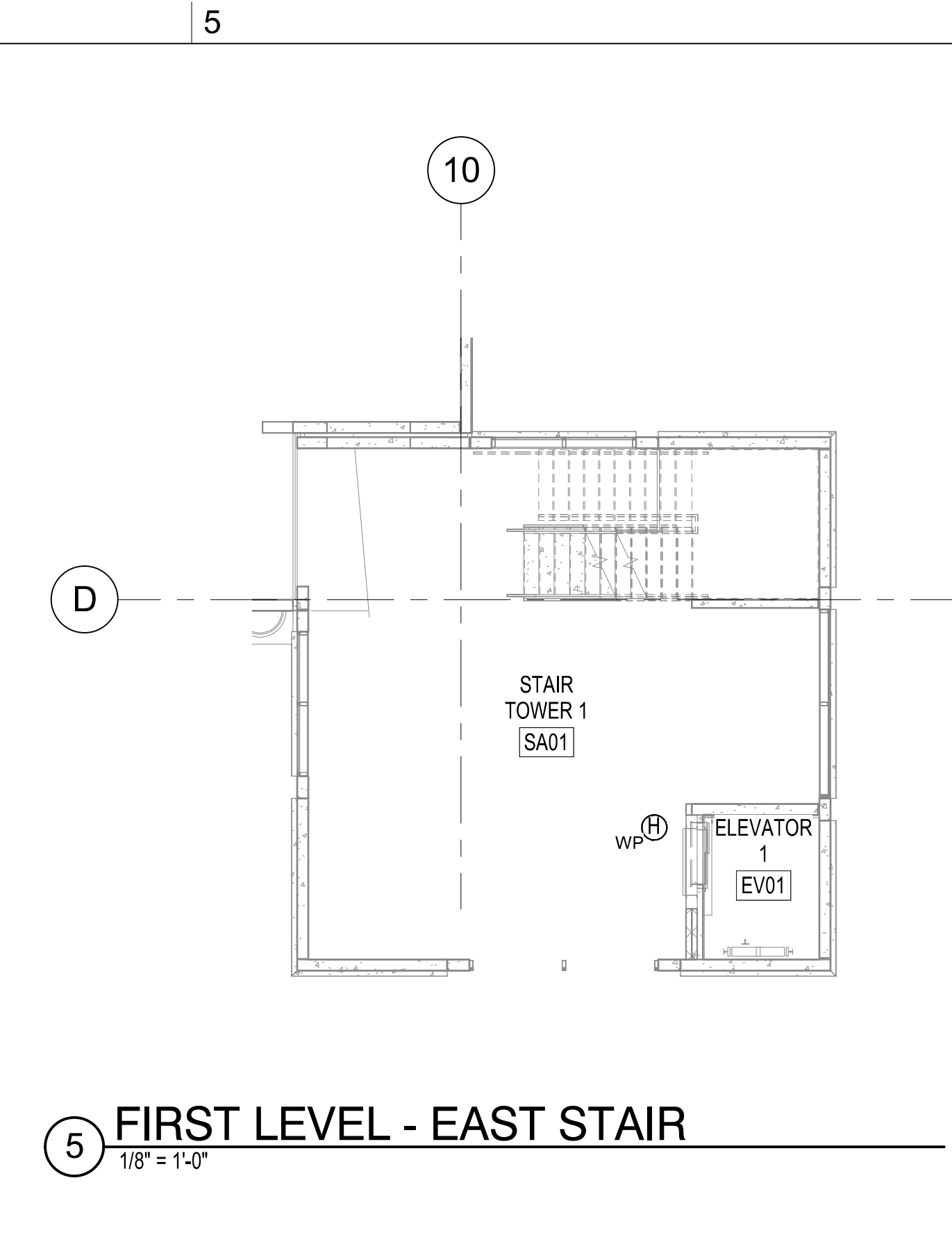
3 FIRST LEVEL - WEST STAIR
1/8" = 1'-0"



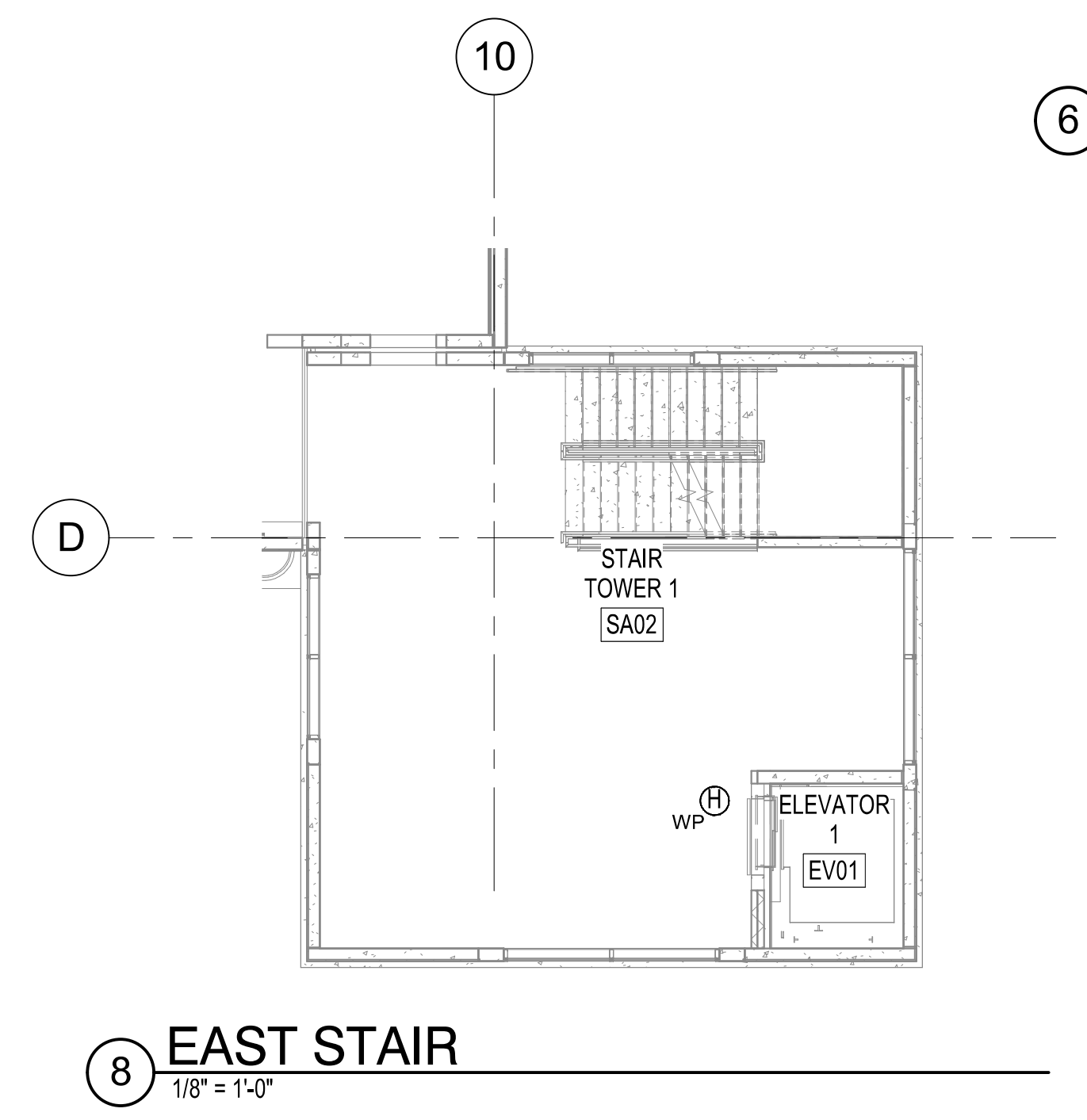
7 WEST STAIR
1/8" = 1'-0"



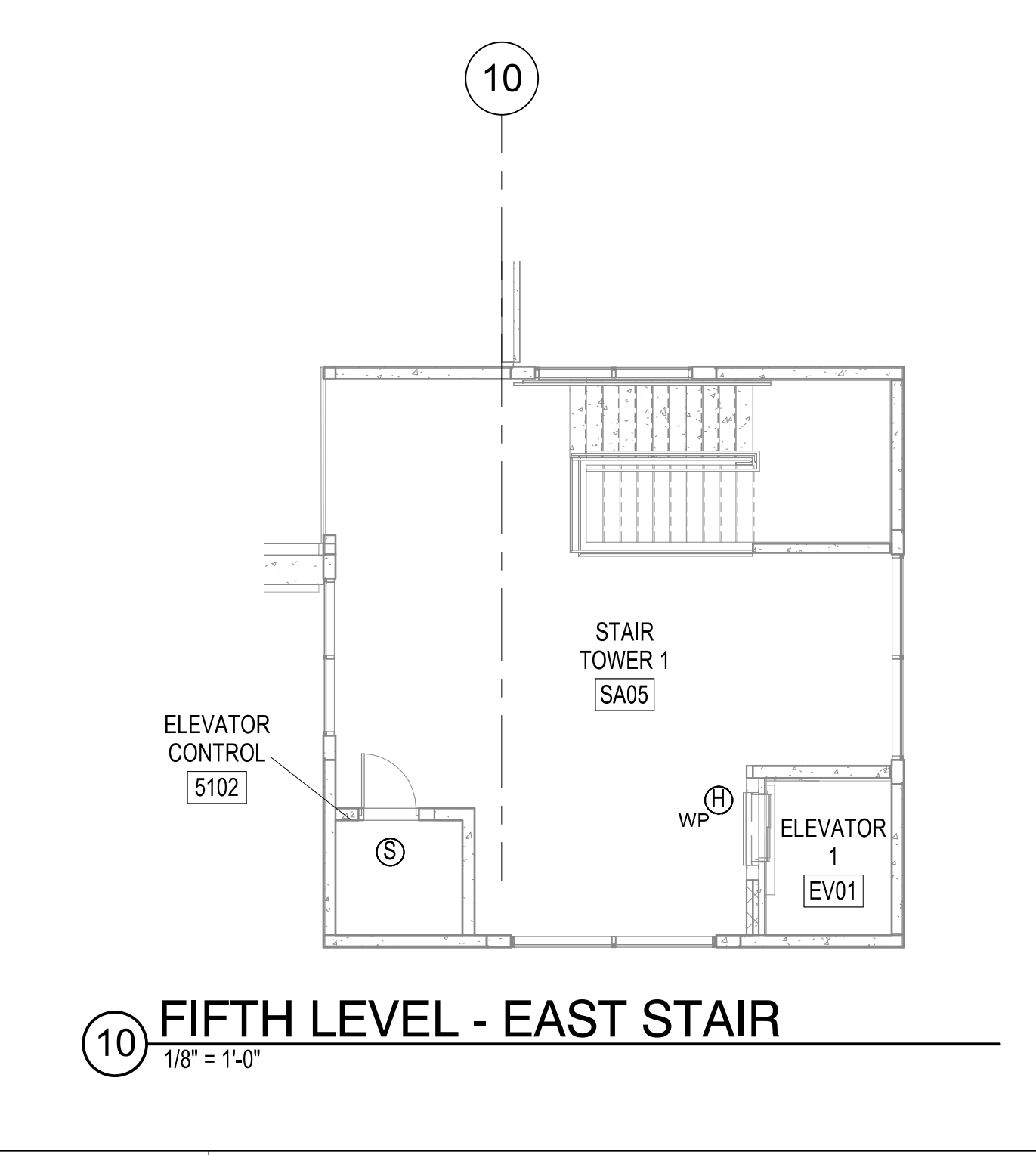
9 FIFTH LEVEL - WEST STAIR
1/8" = 1'-0"



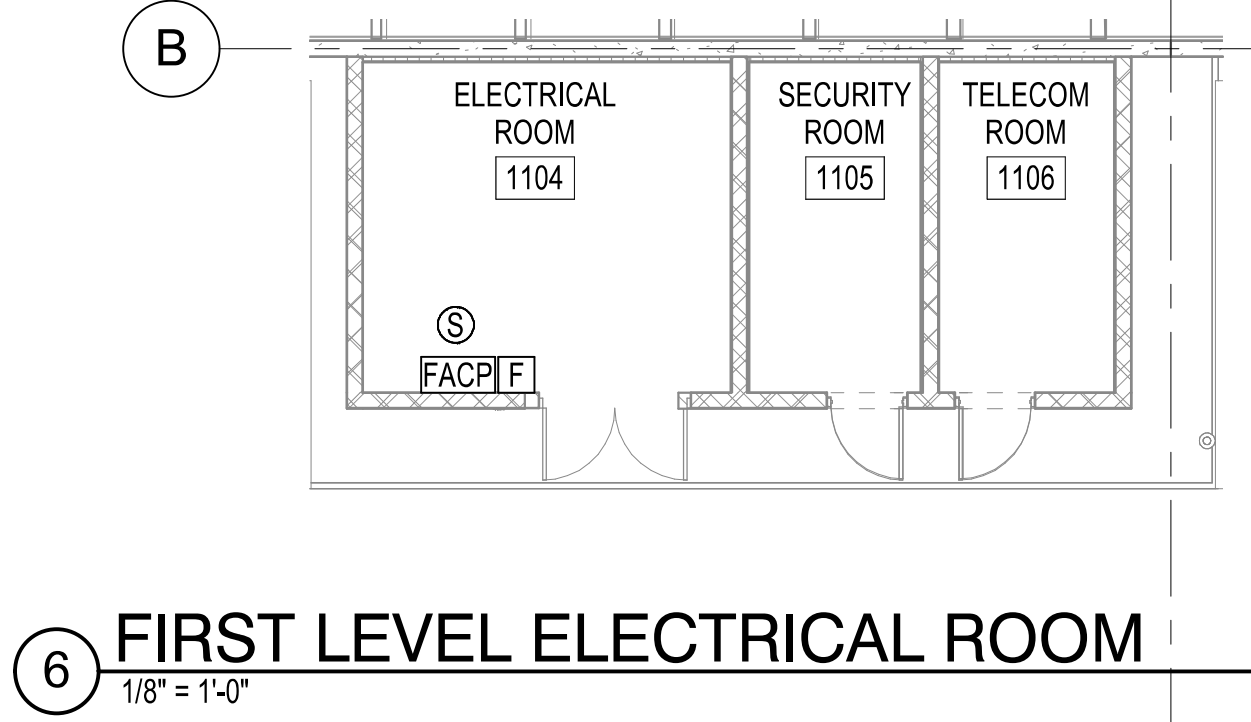
5 FIRST LEVEL - EAST STAIR
1/8" = 1'-0"



8 EAST STAIR
1/8" = 1'-0"



10 FIFTH LEVEL - EAST STAIR
1/8" = 1'-0"

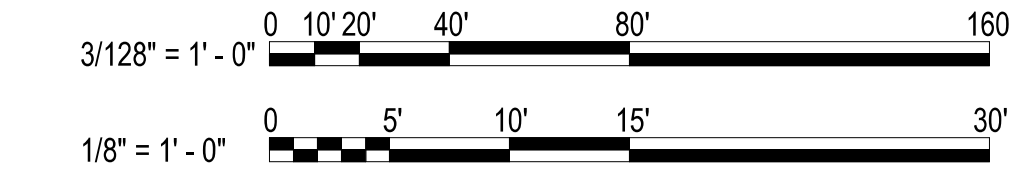


6 FIRST LEVEL ELECTRICAL ROOM
1/8" = 1'-0"

KEY NOTES

1. CONTACT MONITOR MODULE FOR STANDPIPE ISOLATION VALVE TAMPER SWITCH MONITORING. SEE FP SERIES SHEETS FOR COORDINATION.

GRAPHIC SCALE(S)



SCO ID NUMBER: 18-19226-01A
CODE: 41828
ITEM: 301

CONTRACTOR
Balfour Beatty
Construction

DESIGNER
CLARK NEXSEN
1523 ELIZABETH AVENUE, SUITE 300
CHARLOTTE, NORTH CAROLINA 28204
704-377-8800
CLARK NEXSEN LICENSE NUMBER: C-1028

CONSULTANTS
WALKER
CONSULTANTS
13660 Ballantyne Corporate Place
Suite 140
Charlotte, NC 28277
T: 704.247.6230
www.walkerconsultants.com
NC License No. F-0518

MCKIM & CREED
CIVIL ENGINEER
243 NORTH FRONT STREET
WILMINGTON, NORTH CAROLINA
28401
910.343.1048

PROFESSIONAL SEAL



NC CORPORATE ENGINEERING LICENSE #C-1028

SUBMITTAL

August 1, 2019

BID DOCUMENTS

REVISIONS

KEY PLAN

SHEET

FIRE ALARM FLOOR PLANS

FA101

DESIGN: Designer
DRAWN: Author
REVIEW: Checker

CN 8112