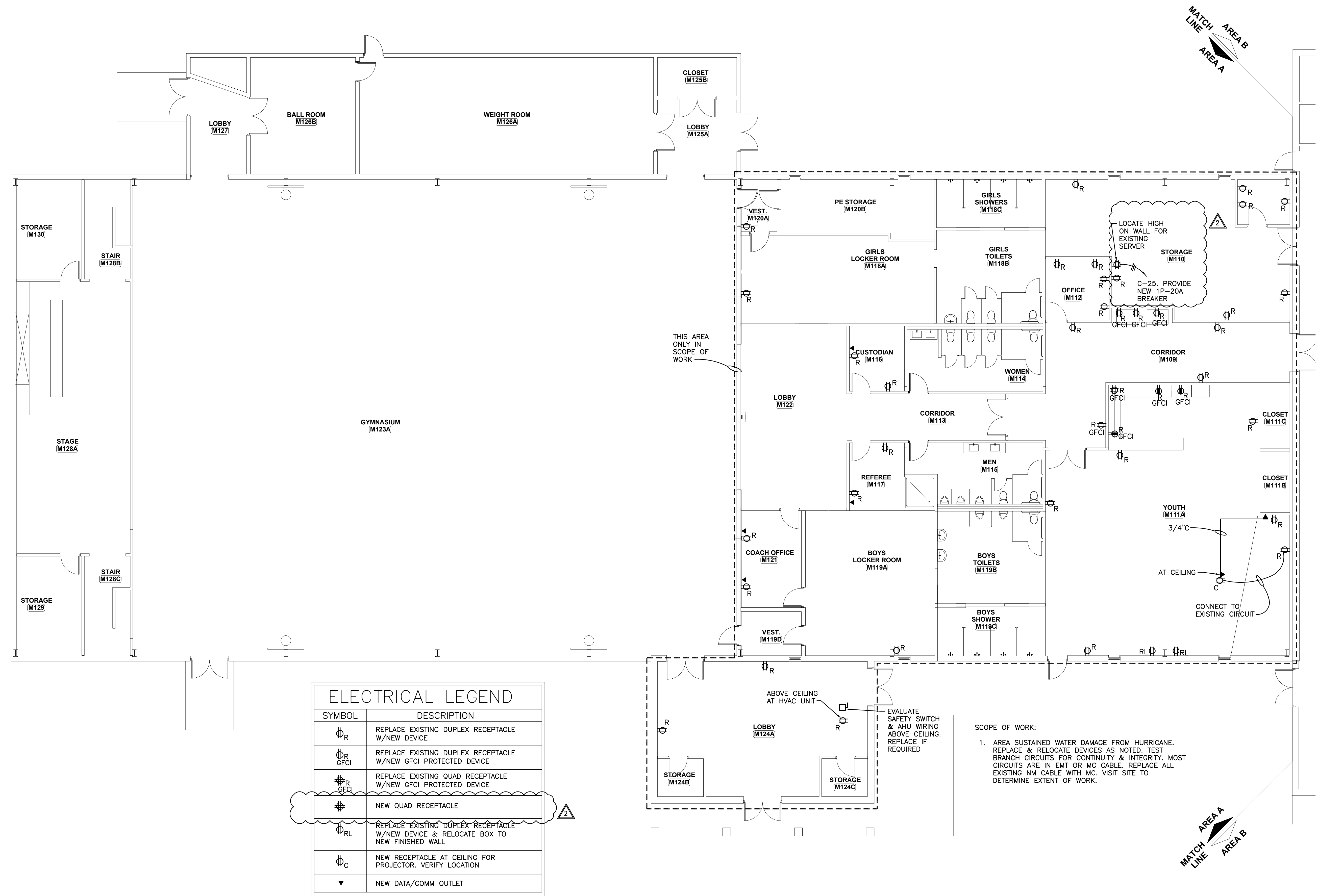
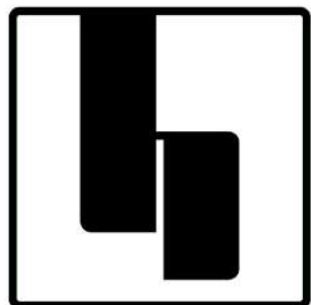


intd 4/18/2014



ELECTRICAL LEGEND	
SYMBOL	DESCRIPTION
ϕ_R	REPLACE EXISTING DUPLEX RECEPTACLE W/NEW DEVICE
$\phi_{R\ GFCI}$	REPLACE EXISTING DUPLEX RECEPTACLE W/NEW GFCI PROTECTED DEVICE
$\phi_{R\ GFCI}$	REPLACE EXISTING QUAD RECEPTACLE W/NEW GFCI PROTECTED DEVICE
ϕ	NEW QUAD RECEPTACLE
ϕ_{RL}	REPLACE EXISTING DUPLEX RECEPTACLE W/NEW DEVICE & RELOCATE BOX TO NEW FINISHED WALL
ϕ_C	NEW RECEPTACLE AT CEILING FOR PROJECTOR. VERIFY LOCATION
∇	NEW DATA/COMM OUTLET

MESHAW BUILDING (BASE BID)
FIRST FLOOR PLAN AREA A – POWER
SCALE: 1/8"=1'-0"



hostetlerarchitecture

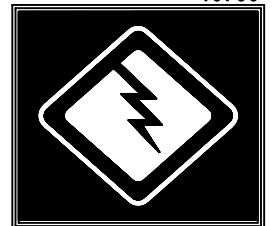
■ ARCHITECTURE ■ PLANNING

3967 MARKET STREET
WILMINGTON, NC 28403

PHONE: 910.612.1119

www.hostetlerarchitecture.com

CONSULTANTS 10755



McDOWELL CONSULTING
ENGINEERS, INC.
P.O. BOX 367
HAMPSTEAD, NC 28443
TEL (910) 270-3747 FAX 270-3779
NC LICENSE NO. C-2546



RENOVATIONS TO

GRACE BAPTIST CHURCH

WILMINGTON
NORTH CAROLINA

CONSTRUCTION DOCUMENTS : 2.8.19

REVISIONS

MARK	DATE	DESCRIPTION
2	4.9.19	BIDDER CLARIFICATIONS
1		
1		
1		

DRAWN BY: RSG PROJ. MGR: GLM

SHEET CONTENT

MESHAW BUILDING (BASE BID)
FIRST FLOOR PLAN - AREA A
ELECTRICAL - POWER

JOB NO.
18013

SHEET
E101