



514 Market Street, Wilmington NC 28401
phone 910.762.2621 fax 910.762.8506
www.bmharch.com

February 27, 2019

ADDENDUM #2

Renovations to:
M.C.S. Noble Middle School
6520 Market Street
Wilmington NC 28405

Project ID: 900-9008

This addendum forms a part of the contract documents and modifies the original drawings and project manual dated February 2019. The enclosed additions, deletions, corrections, and changes shall be as binding as if incorporated in the original documents. All General Conditions, Special Conditions, etc. as originally specified shall apply to these items. Acknowledgement of receipt of this addendum will be required as part of the contract agreement.

Item 1

Project Manual, 012100 Allowances

Add the following under "1.4 SCHEDULE OF ALLOWANCES":

Allowance 3 Seal 600 LF of asphalt cracks.

Allowance 4 Replacement of 3,500 SF of asphalt containing alligator cracking/excessive deterioration.

Item 2

Project Manual, 105113 Lockers

Revise 2.3 B to read:

Manufacturers:

1. List Industries, Inc.
2. Lyon Workspace Products.

Revise 2.4 B to read:

Manufacturers:

1. List Industries, Inc.
2. Lyon Workspace Products.

Item 3

Project Manual, 321216 Asphalt Paving

Add the following:

3.7 REPAIRS

- A. Patching: Saw cut perimeter of patch and excavate existing pavement section to sound base. Excavate rectangular or trapezoidal patches, extending 12 inches into adjacent sound pavement, unless otherwise indicated. Cut excavation faces vertically. Remove excavated

ADDENDUM #1

material. Re-compact existing unbound-aggregate base course to form new subgrade. Install hot-mix asphalt pavement per the requirements of this section.

- B. Crack Filling: Remove debris from cracks or joints to a depth of 1/4 inch.
 1. Clean cracks and joints in existing hot-mix asphalt pavement.
 2. Use emulsified-asphalt slurry to seal cracks and joints less than 1/4 inch wide. Fill flush with surface of existing pavement and remove excess.
 3. Use hot-applied joint sealant to seal cracks and joints more than 1/4 inch wide. Fill flush with surface of existing pavement and remove excess.

Item 4 **Drawings, C2.01 Staking and Planting Plan**
 Parking area has been revised to show light duty asphalt paving.

Revised drawing C2.01 is included as **attachment #1**.

Item 5 **Drawings, C5.02 Site Details**
 Asphalt Pavement Detail and Overlay Notes have been revised.

Revised drawing C5.02 is included as **attachment #2**.

Item 6 **Drawings, A2.04 Enlarged Gymnasium Elevations and Details**
 Clarification. Wall padding at the stage area is detailed in drawing 7/A2.04. Padding is shown on both the storage doors and solid panels at the front face of the stage.

Item 7 **Drawings, A3.02 Door Schedule & Window / Door Details**
 Revise doors 149A and 156A on the DOOR SCHEDULE to be Hollow Metal Doors, Elevation D-3 with Door Finish to be embossed with plain sliced oak grain pattern and then factory finished with custom color. Provide basis of design: CURRISatin by Curries or approved equal.

Item 8 **Drawings, ED2.01B Demolition Lighting Floor Plan – Area B**
 Clarification. Refer to demolition drawing ED2.01B, Keyed Note 6. The stage (track) lighting system shall be protected in place during demolition and construction.

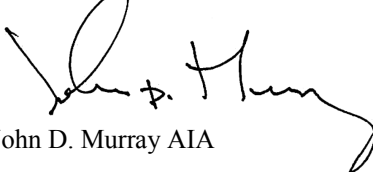
Item 9 **Drawings, E2.01B Electrical Lighting Floor Plan – Area B**
 Provide (1) Type D fixture in Room 25D.

SUBSTITUTION REQUESTS STATUS

All product substitutions listed as “Allowed” shall comply with all requirements of the drawings and specifications. It is the responsibility of the General Contractor to ensure that substitute products installed will function properly with Base Bid and Alternate work shown and specified in the construction documents. The General Contractor shall bear the cost of any modifications, material changes, and additional testing necessary to incorporate substitute products should they be required.

| Spec Section | Item | Manufacturer | Response |
|--------------|---------------------|-------------------|----------|
| 10 21 13 | Toilet Compartments | Scranton Products | Approved |

Bowman Murray Hemingway Architects, PC

A handwritten signature in black ink, appearing to read "John D. Murray". The signature is fluid and cursive, with a large initial "J" and "M".

John D. Murray AIA

PLANT SCHEDULE

| KEY | QTY | PLANT NAME | MINIMUM SIZE | REMARKS |
|-------------------------|-----|--|-----------------------|---------------------------------|
| AR | 4 | RED MAPLE <i>Acer rubrum 'October Glory'</i> | 2.5" CAL., 10' HT. | BARB. STRAIGHT TRUNK FULL CROWN |
| LN | 2 | NATCHEZ GRAPE WITBLE <i>Lagerstroemia L. x F. 'Natchez'</i> | 3-5 TRUNKS 10' HT. | BARB. FULL CROWN |
| OL | 3 | OVERCUP OAK <i>Quercus lyrata</i> | 2.5" CAL., 10' HT. | BARB. STRAIGHT TRUNK FULL CROWN |
| OY | 2 | LIVE OAK <i>Quercus virginiana</i> | 2.5" CAL., 10' HT. | BARB. STRAIGHT TRUNK FULL CROWN |
| EVERGREEN SHRUBS | | | | |
| IC | 10 | DWARF HOLLY <i>Ilex crenata 'Rotundifolia'</i> | 36" HT./SPR. | CONT., FULL 5.0' O.C. |
| RI | 10 | YEDDO HAWTHORNE <i>Rhododendron umbrata</i> | 36" HT./SPR. | CONT., FULL 5.0' O.C. |
| RR | 10 | ENCORE AZALEA AUTUMN JEWEL <i>Rhododendron 'Noblesse' PP25074</i> | 36" HT./SPR. | CONT., FULL 5.0' O.C. |

LAWN AREAS, SEE SEEDING NOTES DETAIL SHEET CS.03

GRAPHIC SYMBOLS SUPERCEDE WRITTEN QUANTITIES WHERE DISCREPANCIES OCCUR.

DISTURBED LAND TREE CALCULATIONS

15 TREES (MIN. 2" CAL.)/ACRE OF DISTURBED LAND
ACRES DISTURBED: 3
CREDITS REQUIRED: 45 CREDITS
CREDITS FOR EXISTING TREES TO REMAIN (HARDWOOD):

| SIZE | QTY. | CREDIT VALUE | TOTAL |
|---------------|------|--------------|-----------|
| 2"-5" CALIPER | 30 | 1 | 30 |
| 6"-11" | 7 | 2 | 14 |
| 12"-17" | 4 | 3 | 12 |
| 18"-23" | 1 | 4 | 4 |
| >24" | 0 | DBH/8 (178) | 0 |
| TOTAL: | | | 60 |

TOTAL CREDITS PROVIDED: 60+ (SEE EXISTING CONDITIONS)

A TREE REMOVAL/PRESERVATION PERMIT IS REQUIRED PRIOR TO REMOVING ANY TREES. CONTACT CITY OF WILMINGTON ZONING DEPARTMENT TO OBTAIN COPY OF PERMIT. ENSURE TO PROVIDE COPY OF TREE REMOVAL CHART WITH PERMIT.

LANDSCAPING FOR EXPANSIONS TO EXISTING STRUCTURES OR USES

PER UDO. SECTION 18-510.
NO INCREASE OF GFA PROPOSED
32 ADDITIONAL PARKING SPACES
4% INTERIOR LANDSCAPING REQUIRED
THE VEHICULAR USE AREA HAS NOT BEEN INCREASED.

LANDSCAPING FOR IMPROVED PARKING LOT

14,745 S.F. OF IMPROVED PARKING REQUIRES 4% INTERIOR LANDSCAPING
4% OF 14,745 SF = 590 S.F. OF REQUIRED INTERIOR LANDSCAPING
2,540 S.F. OF INTERIOR LANDSCAPING HAS BEEN PROVIDED

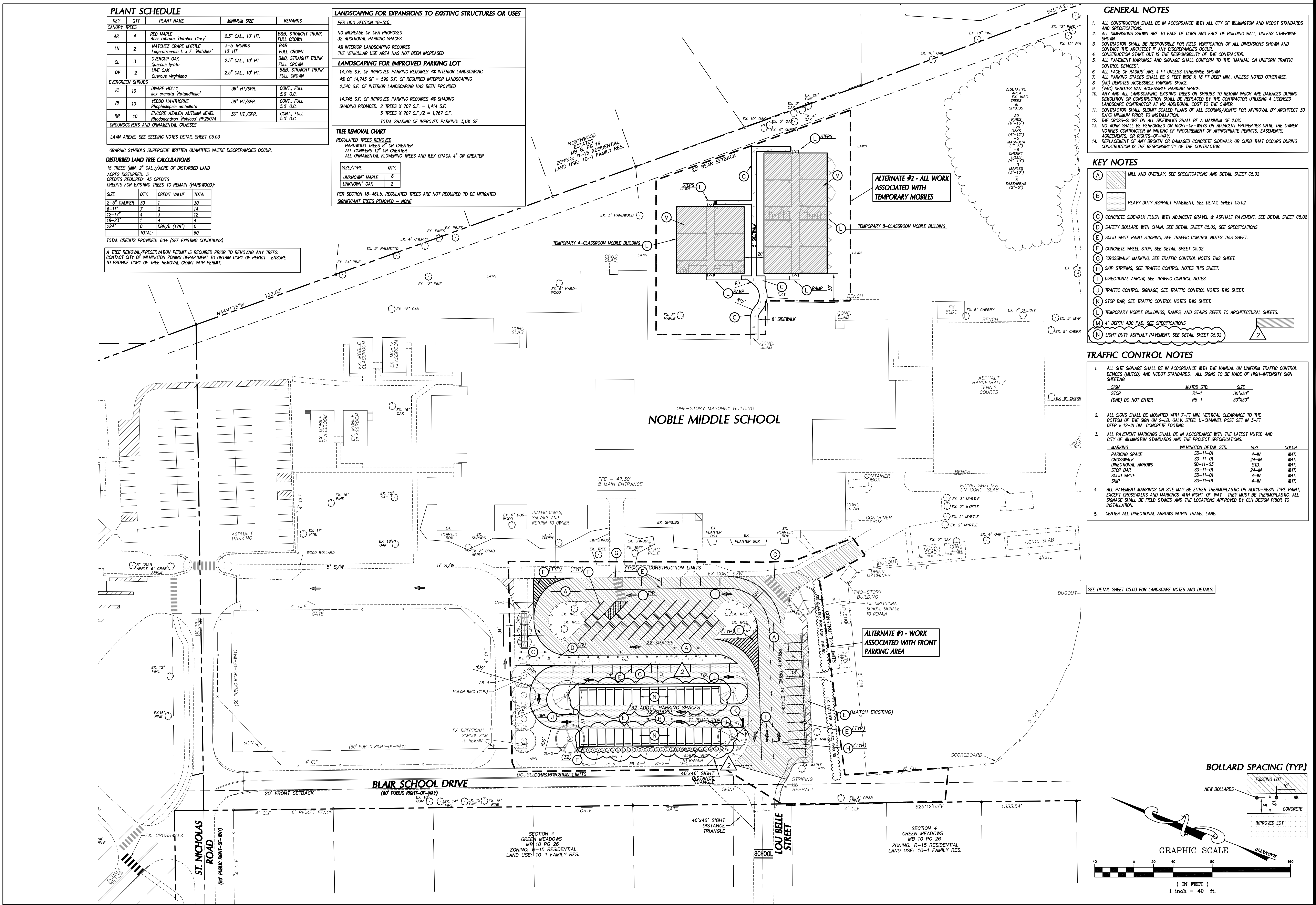
14,745 S.F. OF IMPROVED PARKING REQUIRES 4% SHADING
SHADING PROVIDED: 2 TREES X 707 S.F./2 = 1,414 S.F.
5 TREES X 277 S.F./2 = 1,767 S.F.
TOTAL SHADING OF IMPROVED PARKING: 3,181 SF

TREE REMOVAL CHART

REGULATED TREES REMOVED:
HARDWOOD TREES 8" OR GREATER
ALL CONIFERS 12" OR GREATER
ALL ORNAMENTAL FLOWERING TREES AND ILEX OPACA 4" OR GREATER

| SIZE/TYPE | QTY. |
|----------------|------|
| UNKNOWN* MAPLE | 6 |
| UNKNOWN* OAK | 2 |

PER SECTION 18-461b, REGULATED TREES ARE NOT REQUIRED TO BE MITIGATED
SIGNIFICANT TREES REMOVED - NONE



GENERAL NOTES

- ALL CONSTRUCTION SHALL BE IN ACCORDANCE WITH ALL CITY OF WILMINGTON AND NCDOT STANDARDS AND SPECIFICATIONS.
- ALL DIMENSIONS SHOWN ARE TO FACE OF CURB AND FACE OF BUILDING WALL, UNLESS OTHERWISE SHOWN.
- CONTRACTOR SHALL BE RESPONSIBLE FOR FIELD VERIFICATION OF ALL DIMENSIONS SHOWN AND CONTACT THE ARCHITECT IF ANY DISCREPANCIES OCCUR.
- CONSTRUCTION STAKE OUT IS THE RESPONSIBILITY OF THE CONTRACTOR.
- ALL PAVEMENT MARKINGS AND SIGNAGE SHALL CONFORM TO THE "MANUAL ON UNIFORM TRAFFIC CONTROL DEVICES".
- ALL FACE OF "BARRIERS" ARE 4 FT UNLESS OTHERWISE SHOWN.
- ALL PARKING SPACES SHALL BE 9 FEET WIDE X 18 FT DEEP MIN., UNLESS NOTED OTHERWISE.
- (AO) DENOTES ACCESSIBLE PARKING SPACE.
- (VAC) DENOTES VAN ACCESSIBLE PARKING SPACE.
- ANY AND ALL LANDSCAPING, EXISTING TREES OR SHRUBS TO REMAIN WHICH ARE DAMAGED DURING DEMOLITION OR CONSTRUCTION SHALL BE REPLACED BY THE CONTRACTOR UTILIZING A LICENSED LANDSCAPE CONTRACTOR AT NO ADDITIONAL COST TO THE OWNER.
- CONTRACTOR SHALL SUBMIT SCALED PLANS OF ALL SCORING/COUNTS FOR APPROVAL BY ARCHITECT 30 DAYS MINIMUM PRIOR TO INSTALLATION.
- THE CROSS-SLOPE ON ALL SIDEWALKS SHALL BE A MAXIMUM OF 2.0%.
- NO WORK SHALL BE PERFORMED ON RIGHT-OF-WAYS OR ADJACENT PROPERTIES UNTIL THE OWNER NOTIFIES CONTRACTOR IN WRITING OF PROCUREMENT OF APPROPRIATE PERMITS, EASEMENTS, AGREEMENTS, OR RIGHTS-OF-WAY.
- REPLACEMENT OF ANY BROKEN OR DAMAGED CONCRETE SIDEWALK OR CURB THAT OCCURS DURING CONSTRUCTION IS THE RESPONSIBILITY OF THE CONTRACTOR.

KEY NOTES

- (A) MILL AND OVERLAY, SEE SPECIFICATIONS AND DETAIL SHEET CS.02
- (B) HEAVY DUTY ASPHALT PAVEMENT, SEE DETAIL SHEET CS.02
- (C) CONCRETE SIDEWALK FLUSH WITH ADJACENT GRAVEL & ASPHALT PAVEMENT, SEE DETAIL SHEET CS.02
- (D) SAFETY BOLLARD WITH CHAIN, SEE DETAIL SHEET CS.02, SEE SPECIFICATIONS
- (E) SOLID WHITE PAINT STRIPING, SEE TRAFFIC CONTROL NOTES THIS SHEET.
- (F) CONCRETE WHEEL STOP, SEE DETAIL SHEET CS.02
- (G) "CROSSWALK" MARKING, SEE TRAFFIC CONTROL NOTES THIS SHEET.
- (H) SHOP STRIPING, SEE TRAFFIC CONTROL NOTES THIS SHEET.
- (I) DIRECTIONAL ARROW, SEE TRAFFIC CONTROL NOTES THIS SHEET.
- (J) TRAFFIC CONTROL SIGNAGE, SEE TRAFFIC CONTROL NOTES THIS SHEET.
- (K) STOP BAR, SEE TRAFFIC CONTROL NOTES THIS SHEET.
- (L) TEMPORARY MOBILE BUILDINGS, RAMP, AND STAIRS REFER TO ARCHITECTURAL SHEETS.
- (M) 4" DEPTH ABC PAD, SEE SPECIFICATIONS
- (N) LIGHT DUTY ASPHALT PAVEMENT, SEE DETAIL SHEET CS.02

TRAFFIC CONTROL NOTES

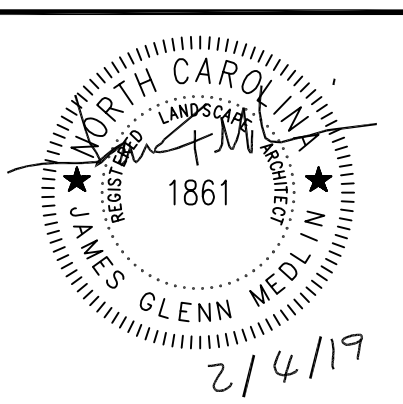
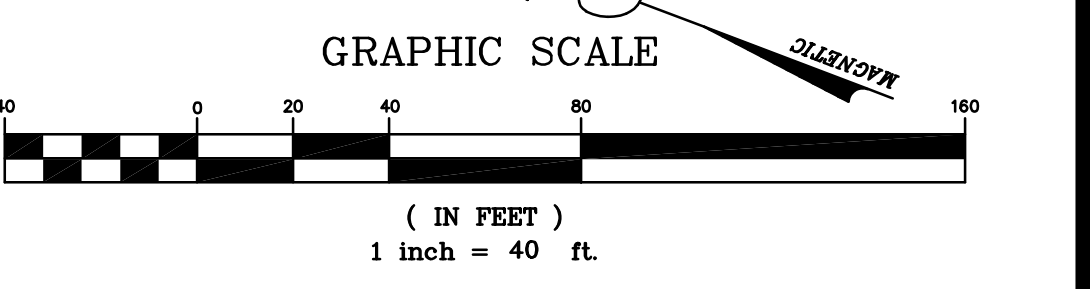
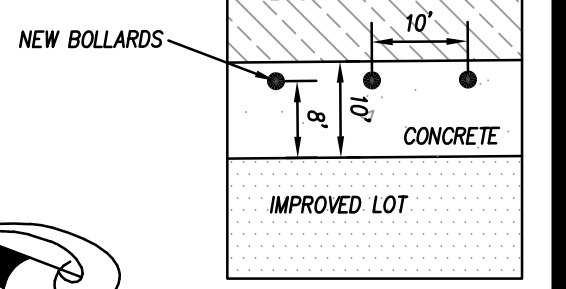
- ALL SITE SIGNAGE SHALL BE IN ACCORDANCE WITH THE MANUAL ON UNIFORM TRAFFIC CONTROL DEVICES (MUTCD) AND NCDOT STANDARDS. ALL SIGNS TO BE MADE OF HIGH-INTENSITY SIGN SHEETING.

| STOP | MUTCD STD. | SIZE |
|--------------------|------------|---------|
| STOP | RS-1 | 30"x30" |
| (ONE) DO NOT ENTER | RS-1 | 30"x30" |
- ALL SIGNS SHALL BE MOUNTED WITH 7"-MIN. VERTICAL CLEARANCE TO THE BOTTOM OF THE SIGN ON 2-1/2" GALV. STEEL U-CHANNEL POST SET IN 3-FT DEEP X 12-IN DIA. CONCRETE FOOTING.
- ALL PAVEMENT MARKINGS SHALL BE IN ACCORDANCE WITH THE LATEST MUTCD AND CITY OF WILMINGTON STANDARDS AND THE PROJECT SPECIFICATIONS.

| MARKING | WILMINGTON DETAIL STD. | SIZE | COLOR |
|--------------------|------------------------|--------|-------|
| PARKING SPACE | SD-11-01 | 4'-IN | WHIT. |
| CROSSWALK | SD-11-01 | 24'-IN | WHIT. |
| DIRECTIONAL ARROWS | SD-11-03 | STD. | WHIT. |
| STOP BAR | SD-11-01 | 24'-IN | WHIT. |
| SOLID WHITE | SD-11-01 | 4'-IN | WHIT. |
| SNIP | SD-11-01 | 4'-IN | WHIT. |
- ALL PAVEMENT MARKINGS ON SITE MAY BE EITHER THERMOPLASTIC OR ALLOY-RESIN TYPE PAINT, EXCEPT CROSSWALKS AND MARKINGS WITH RIGHT-OF-WAY. THEY MUST BE THERMOPLASTIC. ALL SIGNAGE SHALL BE FIELD STAKED AND THE LOCATIONS APPROVED BY CLH DESIGN PRIOR TO INSTALLATION.
- CENTER ALL DIRECTIONAL ARROWS WITHIN TRAVEL LANE.

SEE DETAIL SHEET CS.03 FOR LANDSCAPE NOTES AND DETAILS.

BOLLARD SPACING (TYP.)



Renovations to:
M.C.S. Noble Middle School
6520 Market Street
Wilmington, North Carolina 28405

STAKING AND PLANTING PLAN

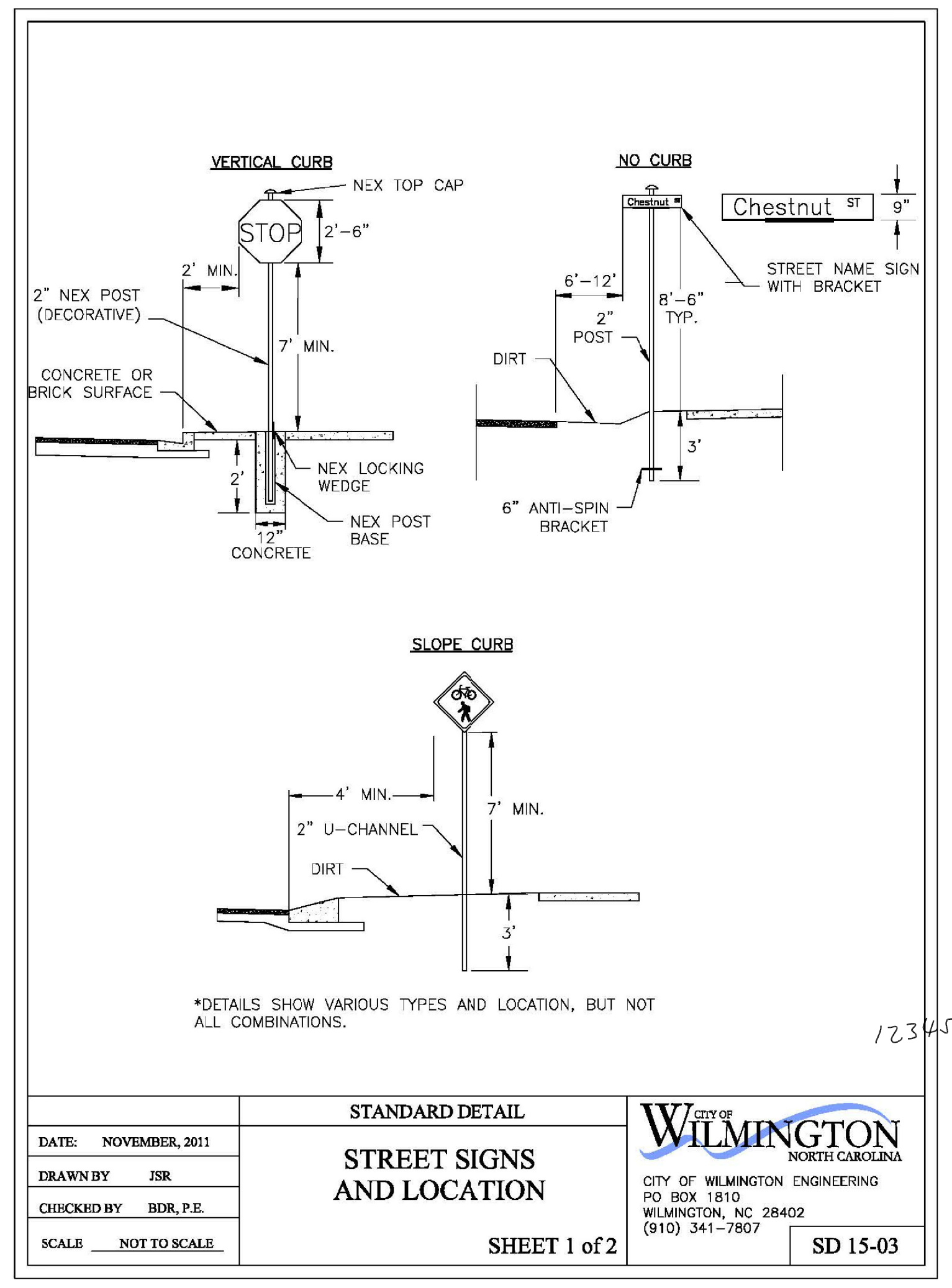
JOB NUMBER: 18-131
DRAWN BY: JGM/HBR
CHECKED BY: JGM
DATE: 2/4/2019

REVISIONS:
1 2/20/2019 DRI COMMENTS ADDENDUM #1
2 2/27/2019 RFI RESPONSE ADDENDUM #2

SHEET NUMBER

C2.01

Addendum #2, Attachment #1



| | | | |
|-----------------------|---------------------------|---|--------------|
| DATE: NOVEMBER, 2011 | STANDARD DETAIL | <p>CITY OF WILMINGTON ENGINEERING PO BOX 1810 WILMINGTON, NC 28402 (910) 341-7807</p> | SD 15-03 |
| DRAWN BY: JSR | STREET SIGNS AND LOCATION | | SHEET 1 of 2 |
| CHECKED BY: BDR, P.E. | | | |
| SCALE: NOT TO SCALE | | | |

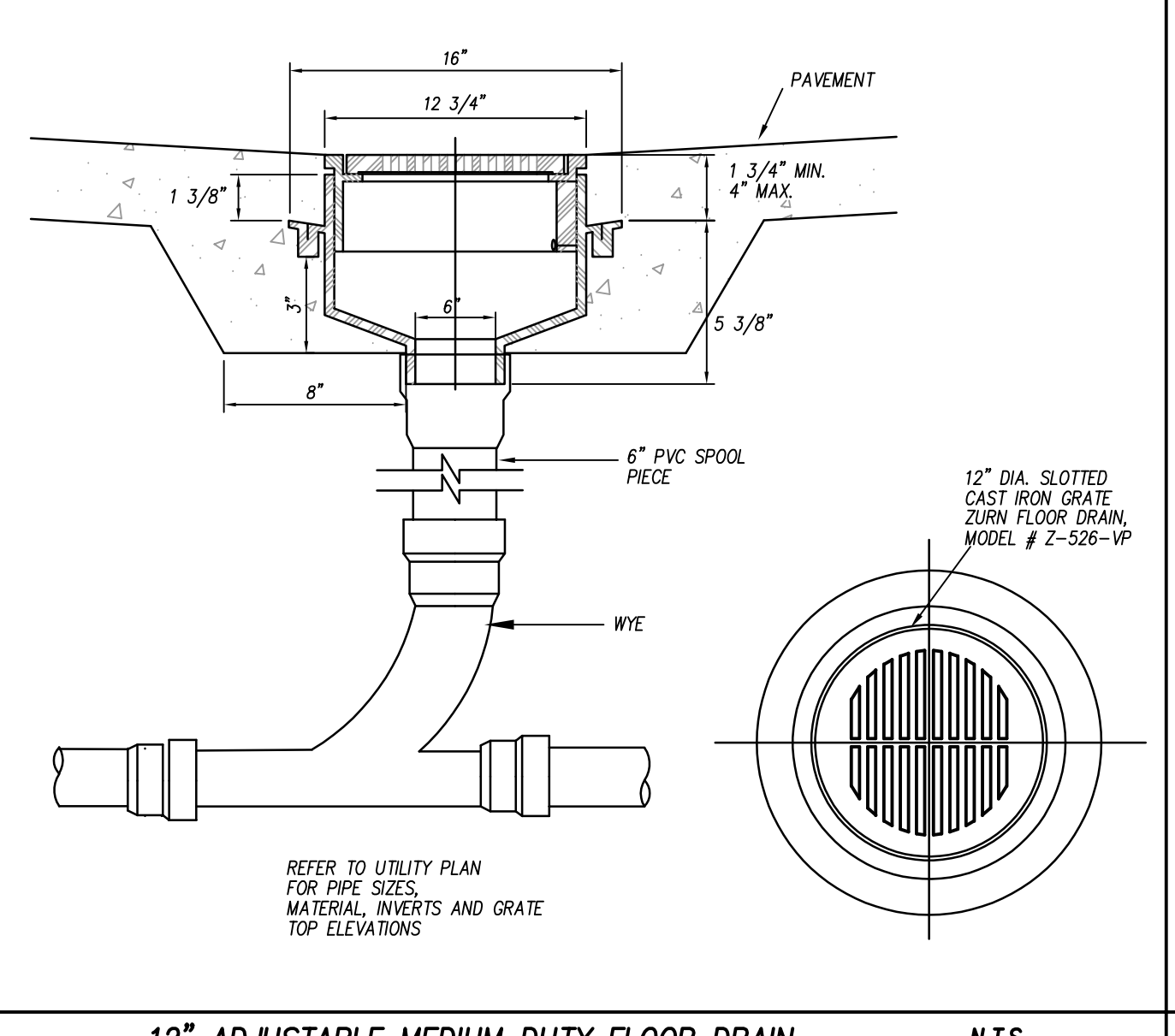
SIGNS

- All signs shall meet the requirements of MUTCD and City Traffic Engineering in effect at the time of construction.
- All Traffic Control Signs including multi-use paths shall be fabricated with 0.080 inch aluminum blanks using high intensity prismatic reflective sheeting Type IV or better. STOP signs shall be a minimum of 30"x30".
- SPECIAL DESIGNATION signs by location and type shall adhere to City of Wilmington signage plan (ie. downtown, historic, cross-city trail, parks, riverfront, scenic by-way, parking, etc.) and all associated policies.
- POST MOUNTED STREET NAME SIGNS shall be fabricated with 9" extruded aluminum street name sign blanks using a standard cut-out. Minimum sign length is 18" long and increasing in 6" increments to 54" maximum as dictated by the number of letters in the name. The color scheme shall be white letters on a green background without a border. Generally, in the downtown and historic areas or as designated in the City of Wilmington signage plan the background shall be blue and contain a topper.
- Decorative sign posts shall consist of the NEX sign support system, 2" octagonal tube, 14 gauge, powder coated glossy black and include cap, post, base and wedge.
- All other sign posts shall be u-channel posts made of galvanized steel with 8" posts 2lbs/ft or 12" posts 3lbs/ft. Galvanized NEX post may be substituted with approval from the City Signs and Markings Engineer.
- OVERHEAD STREET NAME SIGNS shall be fabricated with 0.080 inch aluminum flat sign blanks 18" in height using a standard cut-out. Sign length will be dictated by the number of letters in the name. For mast-arm type traffic signal supports and other overhead support systems refer to the design plans for maximum sign length.
- All sign lettering, colors and fonts shall adhere to the MUTCD in effect at the time of construction. Fluorescent Yellow-Green shall be used on signs, in place of Yellow, when listed as an optional color in the MUTCD. Generally, the font will be FHWA series fonts (Highway Gothic.) Other font types require prior City Signs and Markings Engineer approval.

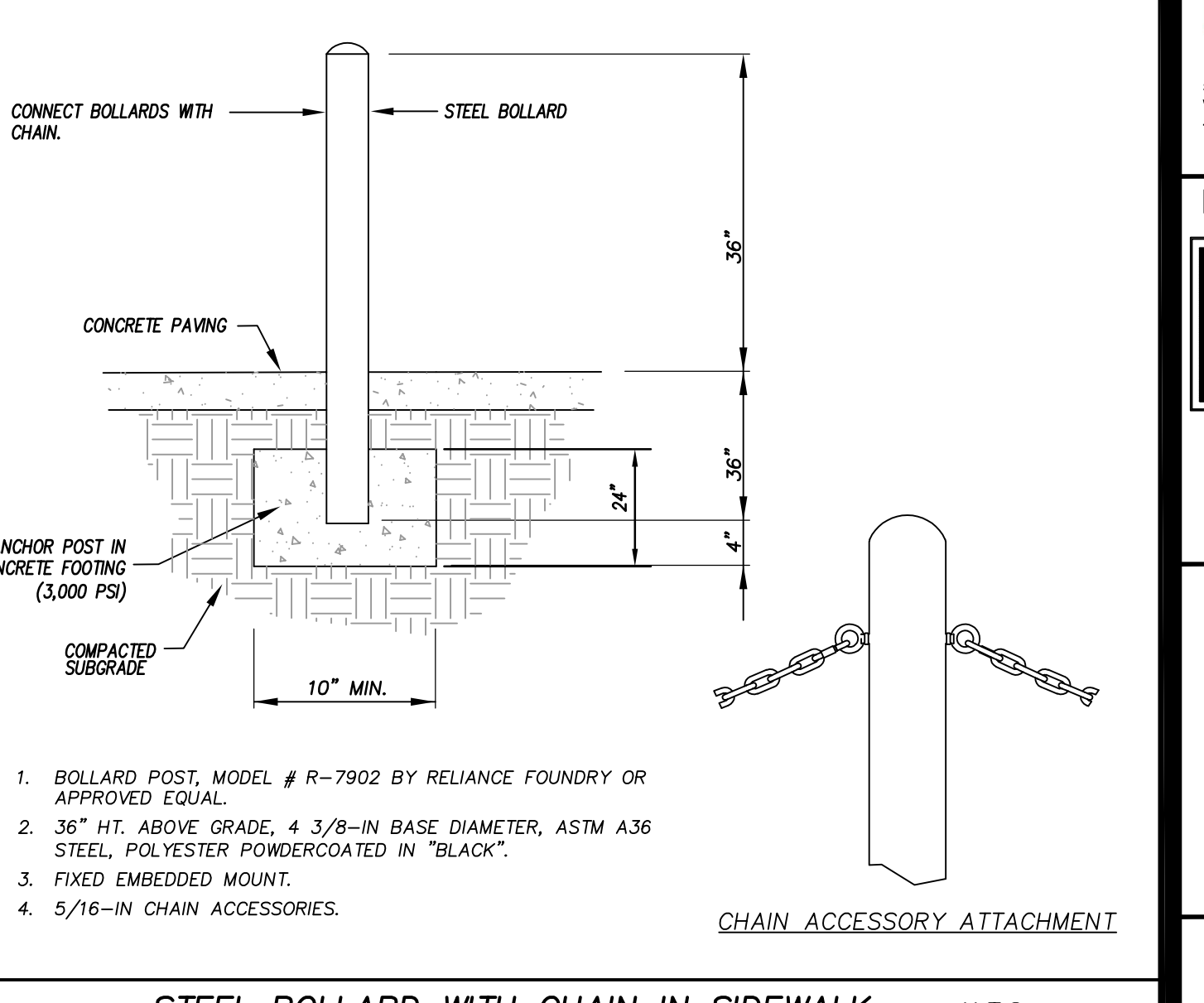
LOCATION

- Sign locations depend on the edge of road condition. Generally, signs shall be a minimum 2' from face of a vertical curb, 4' from front of slope face curb, and 6' from edge of pavement without curb. Signs shall not be located more than 12' from any of these locations.
- Sign posts installed in dirt shall be buried a minimum of 36". Octagonal posts shall utilize an anti-spin device, 6" in length minimum. Sign posts installed in concrete or brick shall utilize a base cast in concrete 24" x 12" diameter.
- Street name signs shall be installed 8'-6" from the ground to the bottom of the sign. Street name signs co-located with STOP signs shall be installed above the STOP sign. A 6" space shall be maintained between the STOP sign and a Street name sign that is parallel to the STOP sign face. All other signs should be mounted per MUTCD guidelines for Urban Areas.

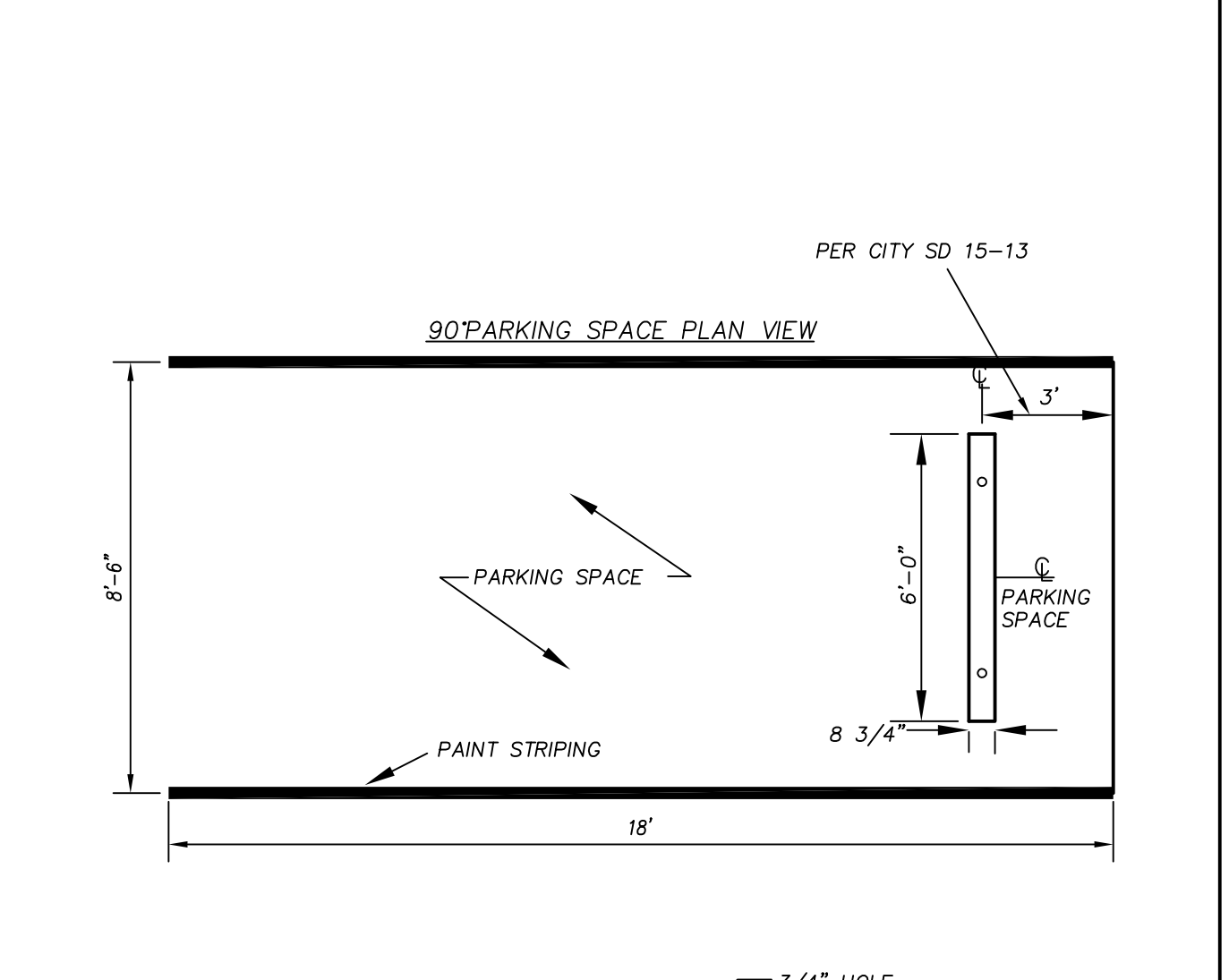
| | | | |
|-----------------------|---------------------------|---|--------------|
| DATE: NOVEMBER, 2011 | STANDARD DETAIL | <p>CITY OF WILMINGTON ENGINEERING PO BOX 1810 WILMINGTON, NC 28402 (910) 341-7807</p> | SD 15-03 |
| DRAWN BY: JSR | STREET SIGNS AND LOCATION | | SHEET 2 of 2 |
| CHECKED BY: BDR, P.E. | | | |
| SCALE: NOT TO SCALE | | | |



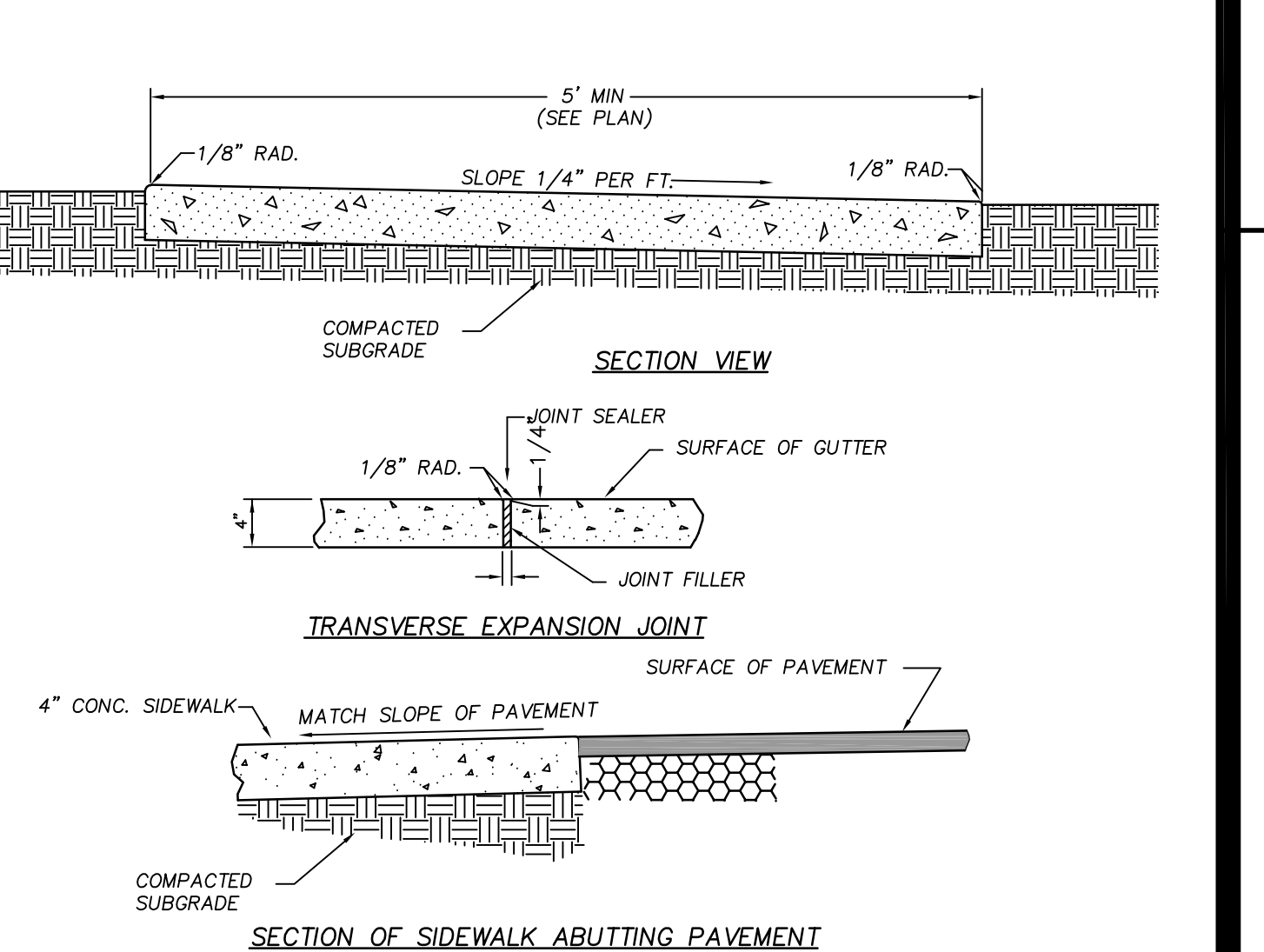
12" ADJUSTABLE MEDIUM DUTY FLOOR DRAIN N.T.S.



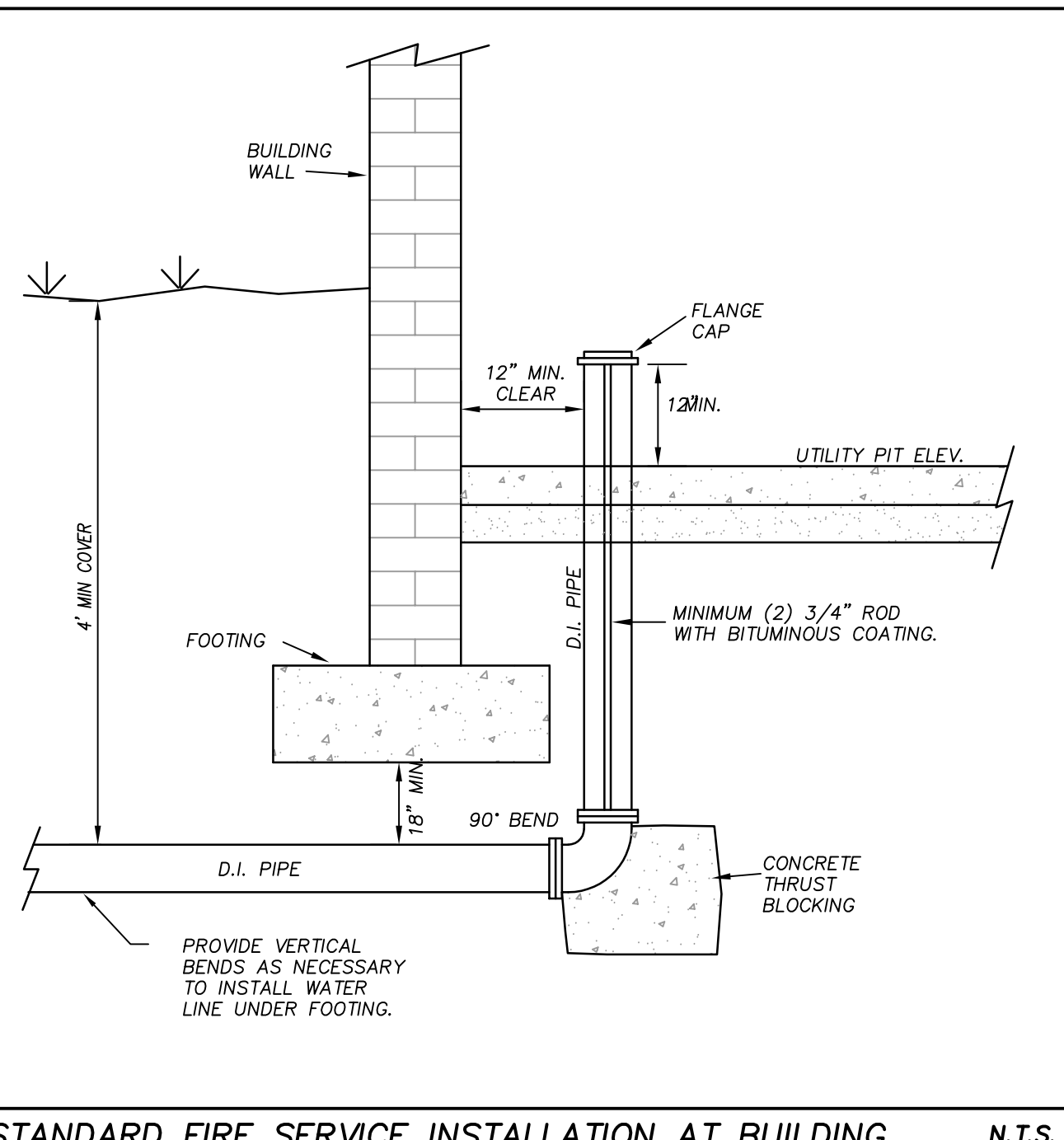
STEEL BOLLARD WITH CHAIN IN SIDEWALK N.T.S.



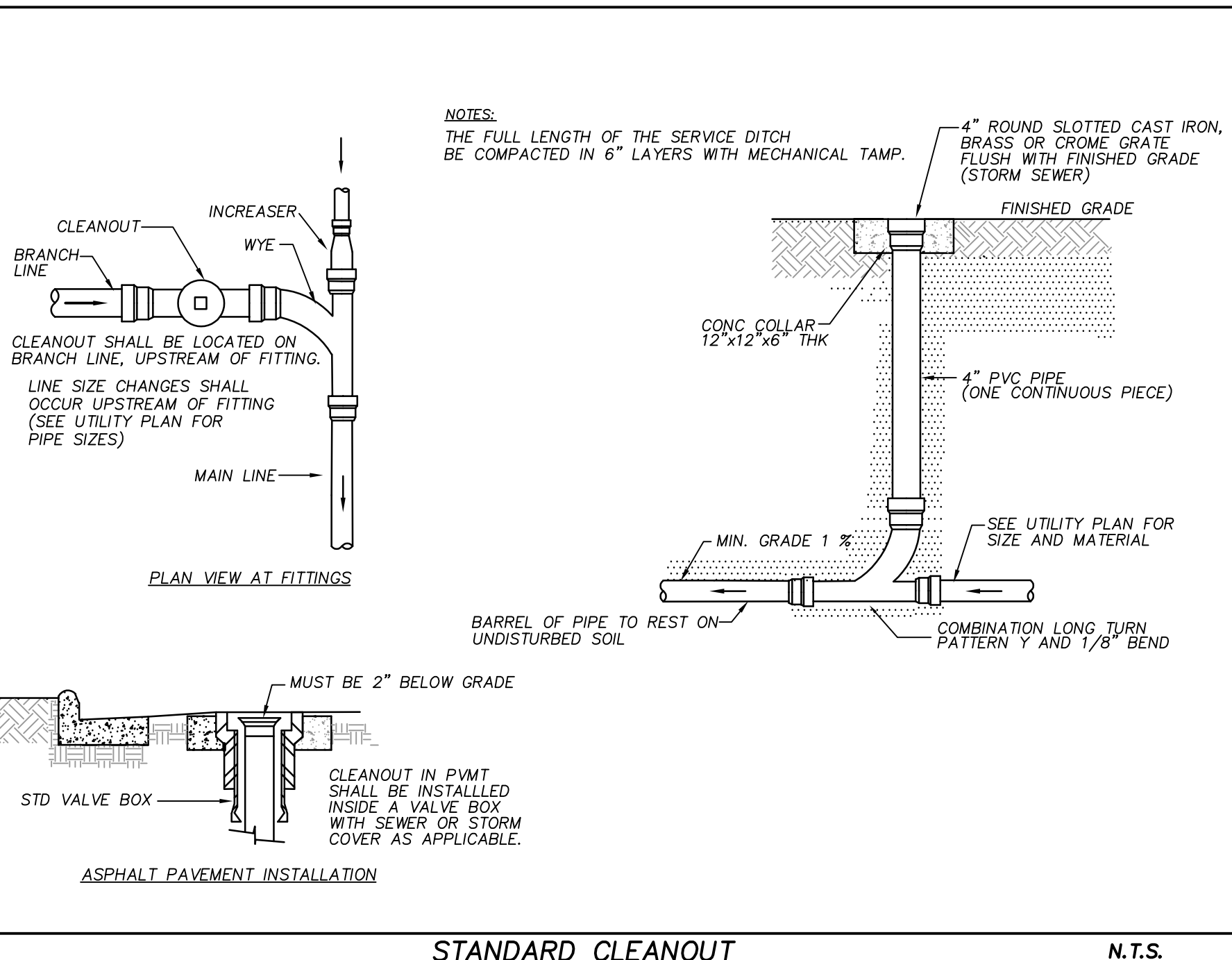
PRE-CAST CONCRETE WHEELSTOP N.T.S.



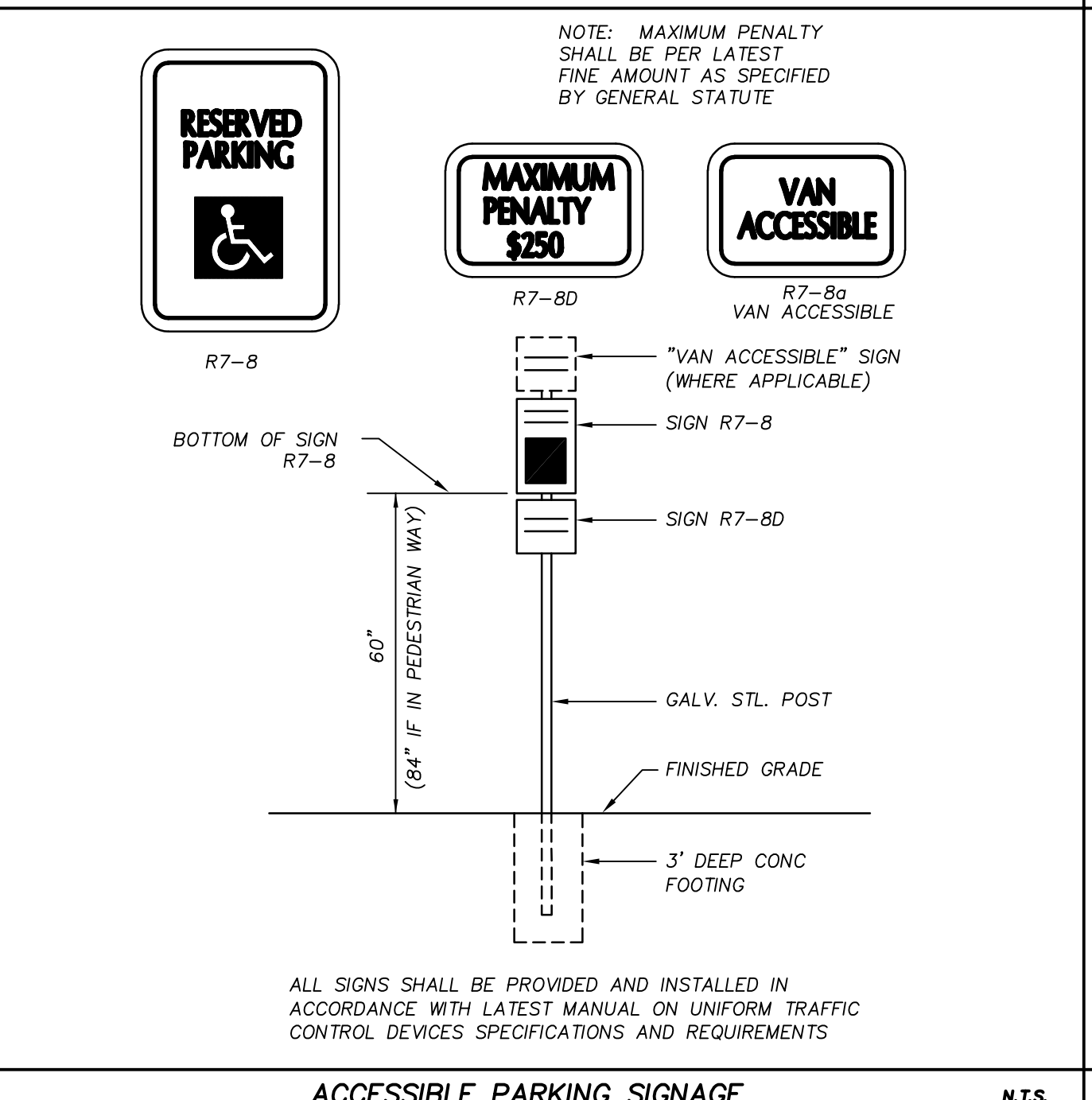
CONCRETE SIDEWALK N.T.S.



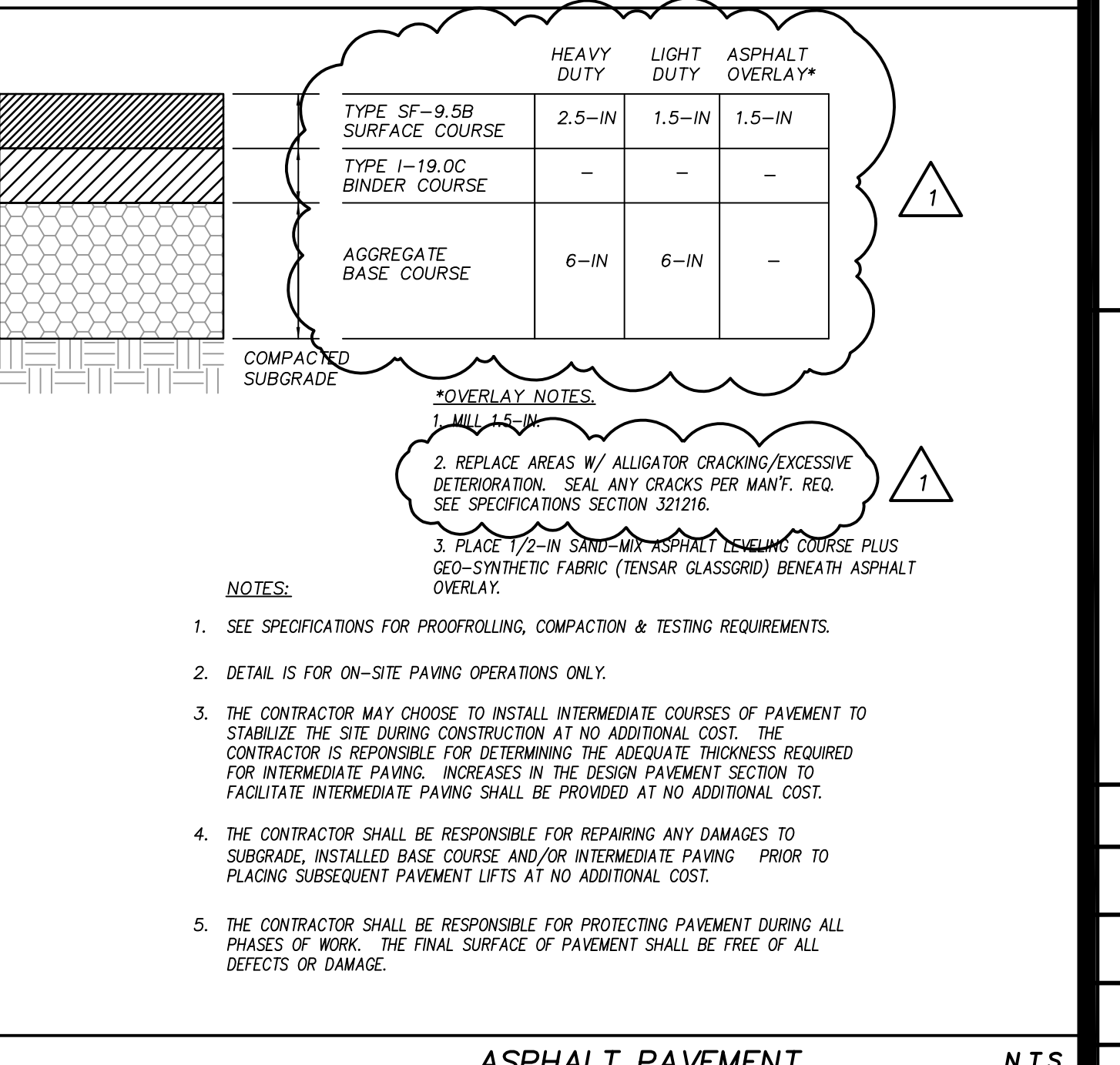
STANDARD FIRE SERVICE INSTALLATION AT BUILDING N.T.S.



STANDARD CLEANOUT N.T.S.



ACCESSIBLE PARKING SIGNAGE N.T.S.



ASPHALT PAVEMENT N.T.S.