

ARCHITECT
ksqdesign
 NEW YORK OKLAHOMA NORTH CAROLINA
 TEXAS COLORADO SOUTH CAROLINA

KSO Design
 1930 CAMDEN ROAD, SUITE 260
 CHARLOTTE, NC 28203
 704.364.3400 office
 704.364.7080 fax
 www.ksqdesign.com

Owner
BRUNSWICK COUNTY SCHOOLS
 199 SESSIONS DRIVE
 BOLIVIA, NC 28422
 910.253.2900 office
 www.bcswan.net

Civil Engineer
McGILL ASSOCIATES
 712 VILLAGE ROAD SW, SUITE 103
 CHARLOTTE, NC 28403
 910.397.2971 office
 910.755.5872 office
 www.mcgillengineer.com

Structural Engineer
CRISER TROUTMAN TANNER
 3809 Providence Ave., Suite 102
 WILMINGTON, NC 28403
 910.397.2971 office
 www.ctengineering.com

MEP Engineer
KSO DESIGN
 2115 REXFORD ROAD, SUITE 500
 CHARLOTTE, NC 28211
 704.364.3400 office
 www.ksqdesign.com

Electrical Consultant
Quality Consulting Engineers, PLLC
 6277-600 Carolina Commons Drive, #350
 Indian Land SC 29107
 (p) 803.207.5450 office
 djoness@qualityconsultingengineers.com

Acoustic & Technology Consultant
THORBURN ASSOCIATES
 401 N. TYSON STREET, 10TH FLOOR
 CHARLOTTE, NC 28202
 910.888.7828 office
 www.TA-inc.com

Building Envelope Consultant
SKA ENGINEERING
 7741 MARKET STREET, SUITE F
 WILMINGTON, NC 28411-9444
 910.442.2000 office
 www.skaeng.com

Food Service Consultant
HERBIN DESIGN
 7325 DORN CIRCLE
 CHARLOTTE, NC 28212-6914
 704.900.0922
 www.herbin.com

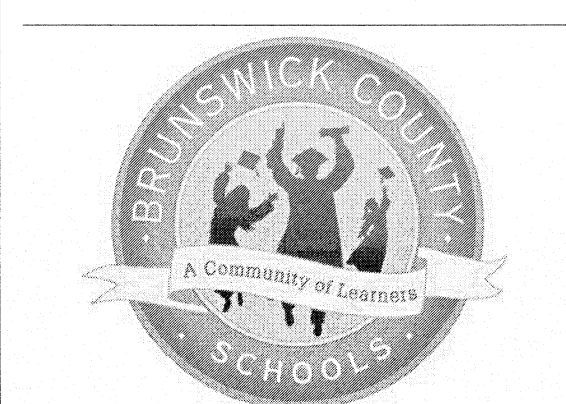
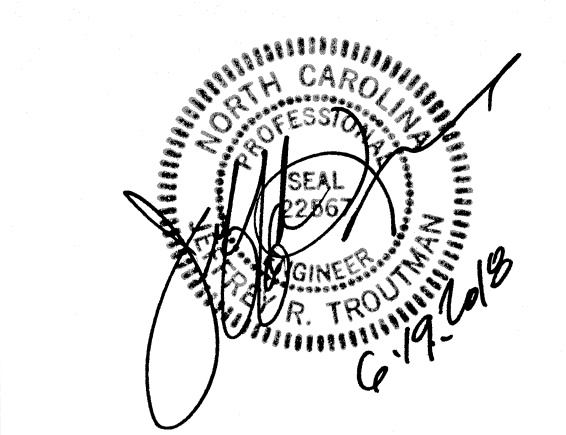
FOUNDATION AND SLAB PLAN - AREA C
 1/8" = 1'-0" 1

- FOUNDATION PLAN NOTES:**
1. TYPICAL SLAB-ON-GRADE SHALL BE 4" 3000 PSI CONCRETE REINFORCED W/ 6x6-W2.9xW2.9 WWR ON VAPOR RETARDER OVER 6" POROUS STONE FILL ON COMPACTED SUBGRADE/FILL, U.N.O.
 2. HATCHED AREA DENOTES SLAB DEPRESSIONS. SEE ARCHITECTURAL DRAWINGS FOR EXTENTS VERIFY DEPRESSION DEPTH.
 3. C - INDICATES COLUMN MARK - SEE COLUMN SCHEDULE.
 4. F - INDICATES FOOTING MARK - SEE FOOTING SCHEDULE.
 5. XB - INDICATES STEEL CROSS-BRACING.
 6. CB - INDICATES STEEL COMPRESSION BRACING.
 7. KB - INDICATES STEEL COMPRESSION BRACING.
 8. FINISH FLOOR ELEVATION - SEE ARCH DRAWINGS.
 9. TYPICAL TOP OF FOOTING DEPTH AT EXTERIOR IS [2'-0"] BELOW FINISHED FLOOR & [1'-0"] AT INTERIOR, U.N.O.
 10. PROVIDE CONTROL JOINTS (C.J.) USING SAWED JOINTS (S.J.) OR KEYS JOINTS (K.J.) AS REQUIRED BY CONCRETE PLACEMENT DETAILS 1/S-501 RESPECTIVELY, BUT SHALL NOT BE LOCATED MORE THAN 15' APART AND SHALL HAVE AREAS LIMITED TO A MAXIMUM LENGTH-TO-WIDTH RATIO OF 1.5 OR LESS, U.N.O. FOR SLABS, SAWCUT PER SPECIFICATIONS.
 11. SEE ARCHITECTURAL DRAWINGS FOR MASONRY WALL JOINT LOCATIONS. SEE 1/S-504 FOR JOINT DETAIL.
 12. PROVIDE COLUMN ISOLATION JOINTS AT EACH COLUMN PER 4/S-501.

COLUMN SCHEDULE								
MARK	C1	C2	C3	C4	C5	C6	C7	C8
COLUMN SIZE	HSS6x6x1/4	HSS6x6x3/8	HSS8x8x5/8	HSS10x10x1/2	W12x50	HSS6x6x3/8	HSS6x6x5/8	HSS8x8x3/8
BASE PLATE MARK	BP-1	BP-2	BP-3	BP-4	BP-5	BP-1	BP-1	BP-6
ANCHOR BOLT MARK	AR-1 (U.N.O.)	AR-2	AR-2	AR-2	AR-2	AR-1	AR-1	AR-1

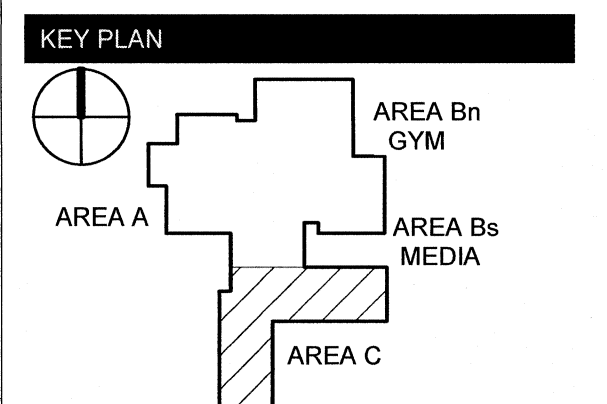
NOTE: SEE S-502 FOR BASE PLATE AND ANCHOR BOLT DETAILS.

STRUCTURAL FOUNDATION SCHEDULE					
MARK	SIZE			REINF	COMMENTS
	LENGTH	WIDTH	THICKNESS		
F303010	7'-0"	7'-0"	1'-0"	(9) - #5 EACH WAY	
F404010	3'-0"	3'-0"	1'-0"	(3) #5 E.W. BOTT.	
F505010	4'-0"	4'-0"	1'-0"	(6) #5 E.W. BOTT.	
F606010	5'-0"	5'-0"	1'-0"	(9) #5 E.W. BOTT.	
F707010	6'-0"	6'-0"	1'-0"	(9) #5 E.W. BOTT.	
F808010	6'-0"	6'-0"	1'-6"	(11) - #6 E.W. T&B	
F909010	7'-0"	7'-0"	1'-6"	(9) - #5 E.W. T&B	
F101010	8'-0"	8'-0"	1'-6"	(16) - #4 E.W. T&B	
F111010	9'-0"	9'-0"	1'-6"	(5) #7 T&B LONG., (9) #6 BOTT. TRANS.	
F1212010	9'-0"	9'-0"	1'-6"	(14) - #5 E.W. T&B	
F1313010	14'-0"	9'-0"	2'-0"	(16) - #6 LONG. T&B, (22) #6 TRANS. T&B	
F1414010	21'-6"	5'-0"	1'-6"	(4) #7 T&B LONG., (23) #6 T&B TRANS.	
F1515010	26'-6"	6'-0"	1'-6"	(5) #9 T&B LONG., (44) #6 T&B TRANS.	
F1616010	26'-6"	6'-0"	1'-6"	(5) #9 T&B LONG., (44) #6 T&B TRANS.	
F1717010	36'-0"	6'-0"	2'-0"	(5) #8 T&B LONG., (39) #6 T&B TRANS.	
F1818010	36'-0"	5'-0"	2'-0"	(4) #10 T&B LONG., (37) #6 T&B TRANS.	
F1919010	43'-0"	7'-0"	2'-0"	(8) #8 T&B LONG., (43) #6 T&B TRANS.	
F2020010	46'-0"	7'-0"	2'-0"	(7) #8 TOP LONG., (21) #6 BOTT. LONG., (46) #8 T&B TRANS.	
F2121010	11'-0"	11'-0"	1'-6"	(8) #7 E.W. T&B	
F2222010	14'-0"	14'-0"	2'-0"	(10) - #8 E.W. T&B	
F2323010	11'-11 1/4"	10'-3 1/4"	1'-6"	#6 @ 9" E.W. TOP & BOT. #6 @ 9" O.C. E.W. T&B	



TOWN CREEK MIDDLE SCHOOL

6370 LAKE PARK DRIVE SE
 WINNABOW, NC 28479



REVISIONS

No.	Description	Date
2	Addendum #2	6/19/18

ISSUED: CONSTRUCTION DOCUMENTS

DATE: 05/24/2018
SCALE: As indicated
SHEET NAME: FOUNDATION PLAN - AREA C
SHEET NUMBER:

S-101C