

COLUMN SCHEDULE								
MARK	C1	C2	C3	C4	C5	C6	C7	C8
COLUMN SIZE	HSS6x6x1/4	HSS6x6x3/8	HSS8x8x5/8	HSS10x10x1/2	W12x50	HSS6x6x3/8	HSS6x6x5/8	HSS8x8x3/8
BASE PLATE MARK	BP-1	BP-2	BP-3	BP-4	BP-5	BP-1	BP-1	BP-6
ANCHOR BOLT MARK	AR-1 (U.N.O.)	AR-2	AR-2	AR-2	AR-2	AR-1	AR-1	AR-1

NOTE: SEE S-502 FOR BASE PLATE AND ANCHOR BOLT DETAILS.

STRUCTURAL FOUNDATION SCHEDULE				
MARK	LENGTH	WIDTH	THICKNESS	COMMENTS
F303010	7'-0"	7'-0"	1'-0"	(9) #5 EACH WAY
F404010	3'-0"	3'-0"	1'-0"	(3) #5 E.W. BOTT.
F505010	4'-0"	4'-0"	1'-0"	(6) #5 E.W. BOTT.
F606010	5'-0"	5'-0"	1'-0"	(5) #5 E.W. BOTT.
F606016	6'-0"	6'-0"	1'-6"	(11) #5 E.W. T&B
F707016	7'-0"	7'-0"	1'-6"	(9) #5 E.W. T&B
F808016	8'-0"	8'-0"	1'-6"	(16) #4 E.W. T&B
F909016	9'-0"	9'-0"	1'-6"	(5) #7 T&B LONG, (9) #6 BOTT. TRANS.
F909016	9'-0"	9'-0"	1'-6"	(14) #5 E.W. T&B
F1409020	14'-0"	9'-0"	2'-0"	(16) #5 LONG. T&B, (22) #6 TRANS. T&B
F2165016	21'-6"	5'-0"	1'-6"	(4) #7 T&B LONG, (23) #6 T&B TRANS.
F2866016	28'-6"	6'-0"	1'-6"	(5) #9 T&B LONG, (44) #6 T&B TRANS.
F2866016	28'-6"	6'-0"	1'-6"	(5) #9 T&B LONG, (44) #6 T&B TRANS.
F3506020	35'-0"	6'-0"	2'-0"	(5) #9 T&B LONG, (39) #6 T&B TRANS.
F3605020	36'-0"	5'-0"	2'-0"	(4) #10 T&B LONG, (37) #6 T&B TRANS.
F4307020	43'-0"	7'-0"	2'-0"	(8) #8 T&B LONG, (43) #8 T&B TRANS.
F4607020	46'-0"	7'-0"	2'-0"	(7) #8 TOP LONG, (21) #8 BOTT. LONG, (49) #8 T&B TRANS.
F11011016	11'-0"	11'-0"	1'-6"	(8) #7 E.W. T&B
F14014020	14'-0"	14'-0"	2'-0"	(10) #8 E.W. T&B
F-ELEVATOR	11'-11 1/4"	10'-3 1/4"	1'-6"	#6 @ 9" E.W. TOP & BOT, #8 @ 9" E.W. T&B

CRISER TROUTMAN TANNER
CONSULTING ENGINEERS NC
3809 Peachtree Ave., Suite 102
Wilmington, NC 28403
910.397.2929 Ph.
910.397.2972 Fax
www.ctengineering.com
Firm License Number: F-0113
#7162.00

ARCHITECT
ksqdesign
NEW YORK OKLAHOMA NORTH CAROLINA
TEXAS COLORADO SOUTH CAROLINA

KSQ Design
1930 CAMDEN ROAD, SUITE 260
CHARLOTTE, NC 28203
704.364.3400 office
704.364.7080 fax
www.ksqdesign.com

Owner
BRUNSWICK COUNTY SCHOOLS
199 SESSIONS DRIVE
BOLIVIA, NC 28422
910.253.2900 office
www.bcswan.net

Civil Engineer
McGILL ASSOCIATES
712 VILLAGE ROAD, SUITE 103
SHALLOTTE, NC 28477
910.397.2971 office
www.mcgillengineer.com

Structural Engineer
CRISER TROUTMAN TANNER
3809 Peachtree Ave., Suite 102
Wilmington, NC 28403
910.397.2971 office
www.ctengineering.com

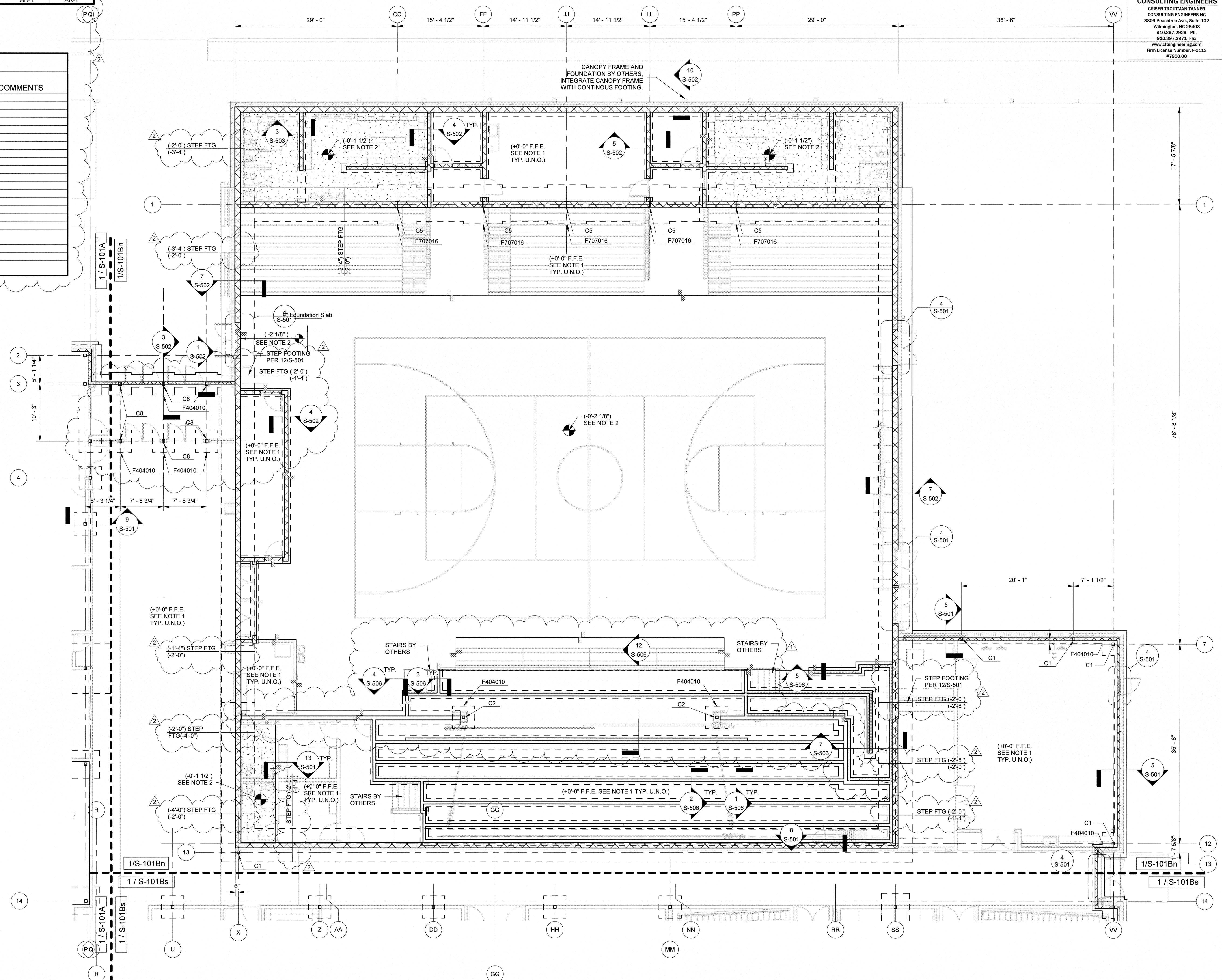
MEP Engineer
KSQ DESIGN
2115 REXFORD ROAD, SUITE 500
CHARLOTTE, NC 28211
704.364.3400 office
www.ksqdesign.com

Electrical Consultant
Quality Consulting Engineers, PLLC
6277-600 Carolina Commons Drive, #350
Indian Land, NC 28117
(p) 803.207.5450 office
d.jones@qualityconsultingengineers.com

Acoustic & Technology Consultant
THORBURN ASSOCIATES
401 N. TRYON STREET, 10TH FLOOR
CHARLOTTE, NC 28202
510.888.7826 office
www.TA-inc.com

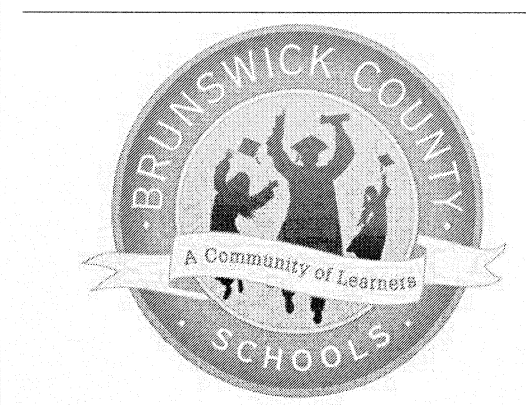
Building Envelope Consultant
SKA ENGINEERING
7741 MARKET STREET, SUITE F
WILMINGTON, NC 28411-9444
910.442.2000 office
www.skaeng.com

Food Service Consultant
HERBIN DESIGN
7325 DORN CIRCLE
CHARLOTTE, NC 28212-6914
704.500.0922
www.herbin.com



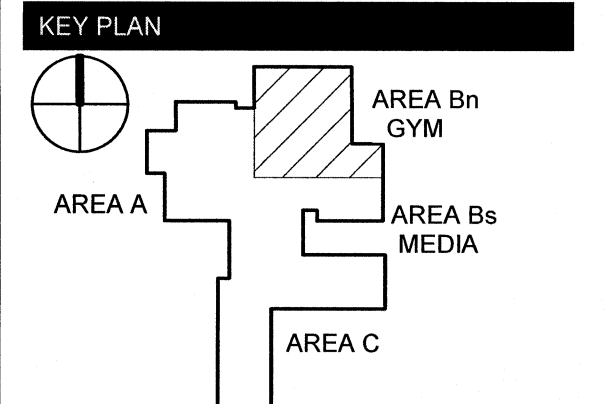
FOUNDATION AND SLAB PLAN - AREA B NORTH
1/8" = 1'-0" 1

- FOUNDATION PLAN NOTES:**
- TYPICAL SLAB-ON-GRADE SHALL BE 6" IN THE GYM AND 4" U.N.O. 3000 PSI CONCRETE REINFORCED W/ 6x6-W2 8xW2.9 WWR ON VAPOR RETARDER OVER 6" POROUS STONE FILL ON COMPACTED SUBGRADE/FILL U.N.O.
 - HATCHED AREA DENOTES SLAB DEPRESSIONS. SEE ARCHITECTURAL DRAWINGS FOR EXTENTS VERIFY DEPRESSION DEPTH.
 - C - INDICATES COLUMN MARK - SEE COLUMN SCHEDULE.
 - F - INDICATES FOOTING MARK - SEE FOOTING SCHEDULE.
 - XB - INDICATES STEEL CROSS-BRACING.
 - CB - INDICATES STEEL COMPRESSION BRACING.
 - FINISH FLOOR ELEVATION - SEE ARCH DRAWINGS.
 - TYPICAL TOP OF FOOTING DEPTH AT EXTERIOR IS [-2'-0"] BELOW FINISHED FLOOR & [-1'-0"] AT INTERIOR, U.N.O.
 - PROVIDE CONTROL JOINTS (C.J.) USING SAWED JOINTS (S.J.) OR KEVED JOINTS (K.J.) AS REQUIRED BY CONCRETE PLACEMENT DETAILS 115-501 RESPECTIVELY, BUT SHALL NOT BE LOCATED MORE THAN 15' APART AND SHALL HAVE AREAS LIMITED TO A MAXIMUM LENGTH-TO-WIDTH RATIO OF 1.5 OR LESS, U.N.O. FOR SLABS. SAWCUT PER SPECIFICATIONS.
 - SEE ARCHITECTURAL DRAWINGS FOR MASONRY WALL, JOINT LOCATIONS. SEE 115-504 FOR JOINT DETAIL.
 - PROVIDE COLUMN ISOLATION JOINTS AT EACH COLUMN PER 405-501.
 - COORDINATE THICKENED FOOTING FOR LOAD-BEARING STAGE KNEEWALLS WITH SECTIONS ON SHEET S-506.
 - 12" CMU GYM WALLS IN THE "FIELD" ZONE SHALL BE REINFORCED WITH #8 @ 32" O.C. FULL HEIGHT AND FULLY GROUTED.
 - 12" CMU WALLS WITHIN 12'-0" OF GYM WALL CORNERS SHALL BE REINFORCED WITH #8 @ 16" O.C. AND FULLY GROUTED.
 - 12" LOCKER ROOM WALLS SHALL BE REINFORCED WITH #4 @ 48" O.C. FULL HEIGHT AND GROUTED AT VERTICAL BAR LOCATIONS ABOVE GRADE AND IN ALL CELLS BELOW GRADE.



TOWN CREEK MIDDLE SCHOOL

6370 LAKE PARK DRIVE SE
WINNABOW, NC 28479



REVISIONS

No.	Description	Date
1	Addendum #1	TBD
2	Addendum #2	6/19/18

ISSUED: CONSTRUCTION DOCUMENTS

DATE: 05/24/2018
SCALE: As Indicated

SHEET NAME:
FOUNDATION PLAN - GYM - AREA B NORTH

SHEET NUMBER:

S-101Bn