



NEW YORK OKLAHOMA NORTH CAROLINA
TEXAS COLORADO SOUTH CAROLINA

KSQ Design
1920 CAMDEN ROAD, SUITE 260
CHARLOTTE, NC 28203
704.364.3400 office
704.364.7080 fax
www.ksq.design

Owner
BRUNSWICK COUNTY SCHOOLS
189 SESSIONS DRIVE
BOLIVIA, NC 28422
910.253.2900 office
www.bcschools.net

Civil Engineer
MCGILL ASSOCIATES
712 VILLAGE ROAD SW, SUITE 103
SHALLOTTE, NC 28470
910.755.5872 office
www.mcgillengineer.com

Structural Engineer
CRISER TROUTMAN TANNER
3809 PEACETREE AVE., SUITE 102
WILMINGTON, NC 28403
910.397.2971 office
www.ctengineering.com

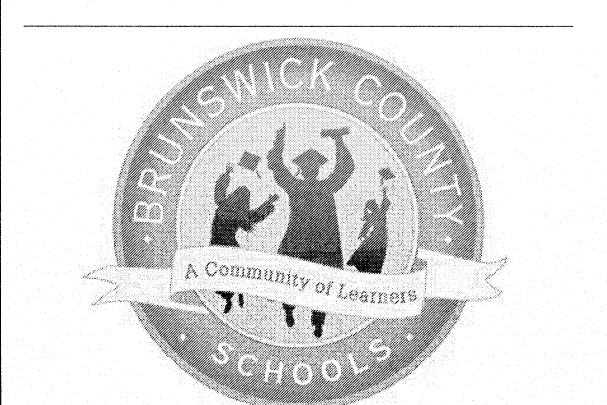
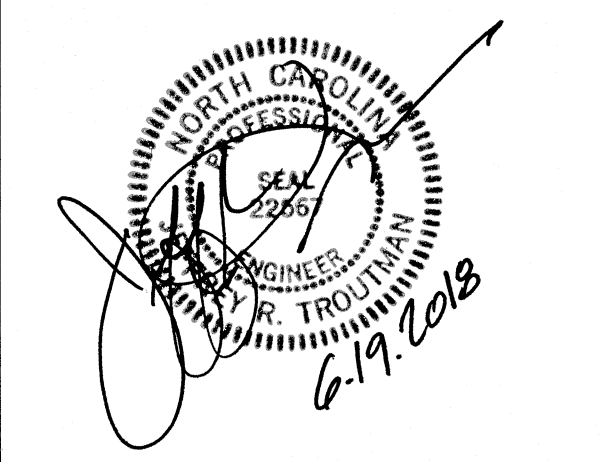
MEP Engineer
KSQ DESIGN
2115 REXFORD ROAD, SUITE 500
CHARLOTTE, NC 28211
704.364.3400 office
www.ksq.design

Electrical Consultant
Quality Consulting Engineers, PLLC
6277-600 Carolina Commons Drive, #350
Indian Land, SC 29707
(910) 803.207 5450 office
qcones@qualityconsultingengineers.com

Acoustic & Technology Consultant
THORBURN ASSOCIATES
401 N. TYRON STREET, 10TH FLOOR
CHARLOTTE, NC 28202
910.866.7828 office
www.TA-inc.com

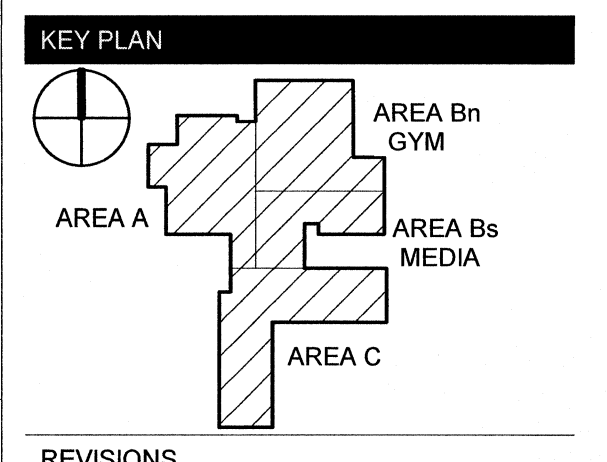
Building Envelope Consultant
SKA ENGINEERING
774 MARKET STREET, SUITE F
WILMINGTON, NC 28411-9444
910.442.2000 office
www.skaeng.com

Food Service Consultant
HERBIN DESIGN
7325 DORN CIRCLE
CHARLOTTE, NC 28212-6914
704.900.0922
www.herbin.com



TOWN CREEK MIDDLE SCHOOL

6370 LAKE PARK DRIVE SE
WINNABOW, NC 28479



REVISIONS

No.	Description	Date
2	Addendum #2	6/19/18

ISSUED: CONSTRUCTION DOCUMENTS

DATE: 05/24/2018
SCALE: As indicated
SHEET NAME: DIAGRAM PLANS - DECK ATTACHMENT

SHEET NUMBER: S-003

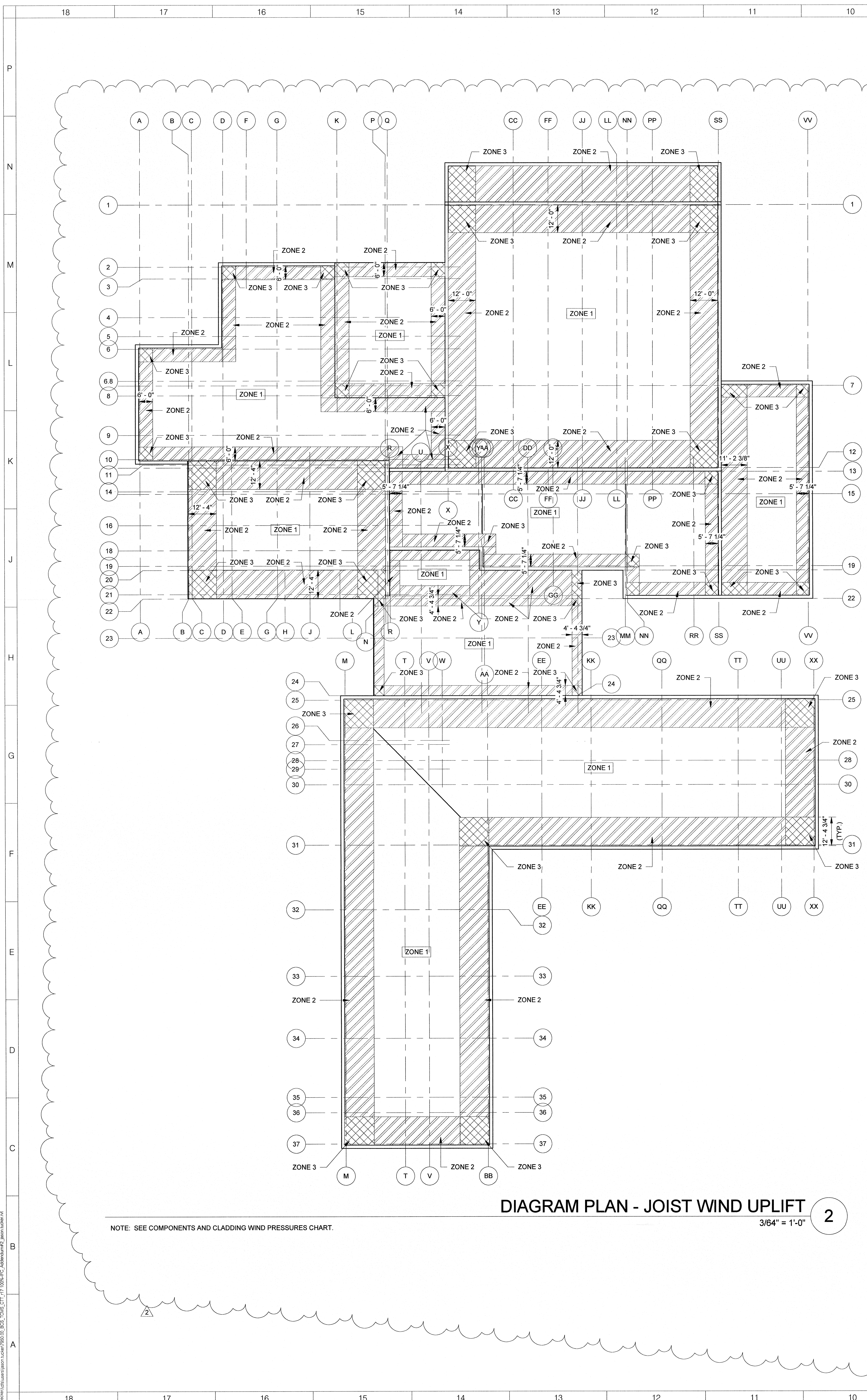


DIAGRAM PLAN - JOIST WIND UPLIFT
3/64" = 1'-0" 2

NOTE: SEE COMPONENTS AND CLADDING WIND PRESSURES CHART.

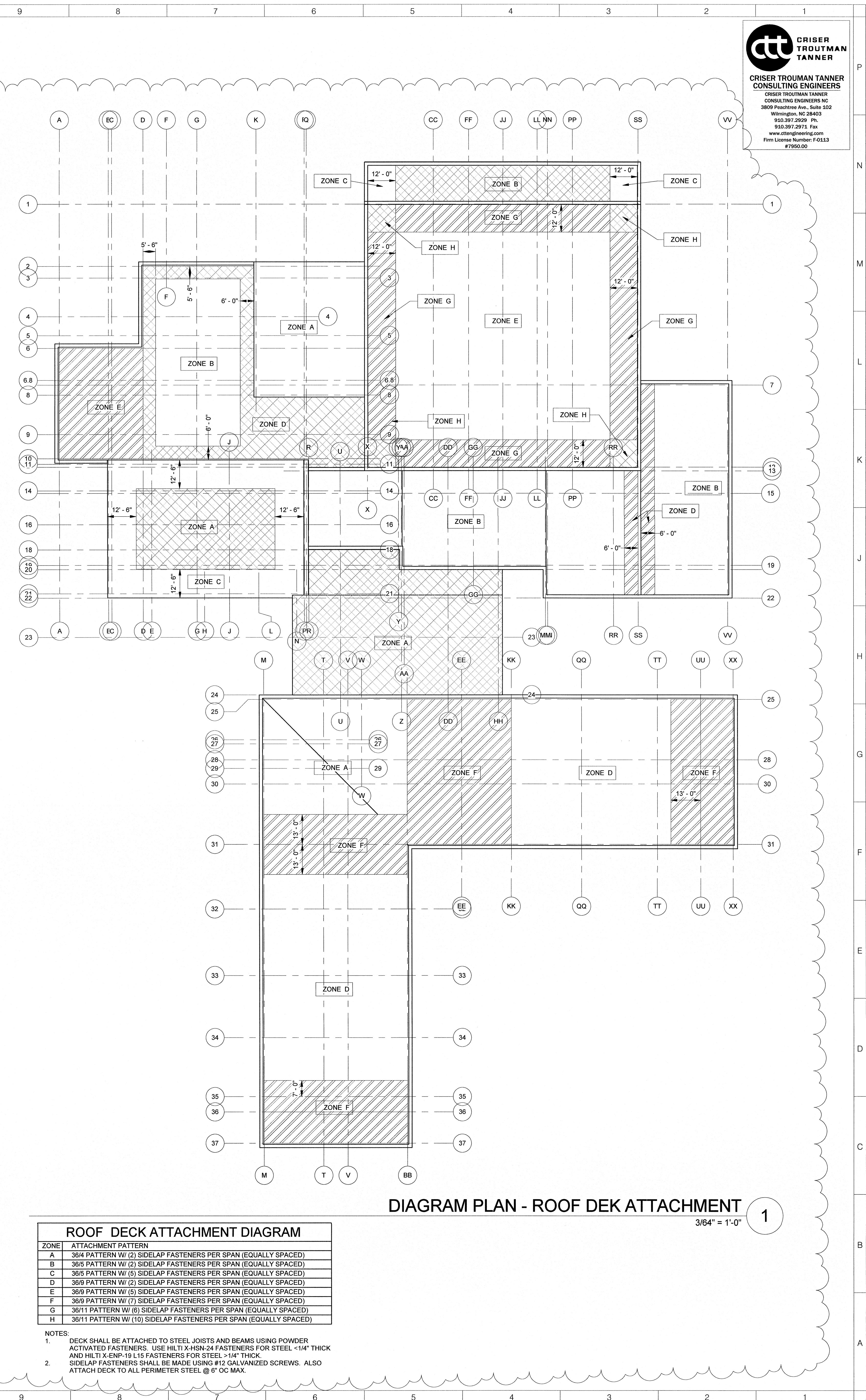


DIAGRAM PLAN - ROOF DECK ATTACHMENT
3/64" = 1'-0" 1

ROOF DECK ATTACHMENT DIAGRAM

ZONE	ATTACHMENT PATTERN
A	36/4 PATTERN W/ (2) SIDELAP FASTENERS PER SPAN (EQUALLY SPACED)
B	36/5 PATTERN W/ (2) SIDELAP FASTENERS PER SPAN (EQUALLY SPACED)
C	36/5 PATTERN W/ (3) SIDELAP FASTENERS PER SPAN (EQUALLY SPACED)
D	36/9 PATTERN W/ (2) SIDELAP FASTENERS PER SPAN (EQUALLY SPACED)
E	36/9 PATTERN W/ (5) SIDELAP FASTENERS PER SPAN (EQUALLY SPACED)
F	36/9 PATTERN W/ (7) SIDELAP FASTENERS PER SPAN (EQUALLY SPACED)
G	36/11 PATTERN W/ (6) SIDELAP FASTENERS PER SPAN (EQUALLY SPACED)
H	36/11 PATTERN W/ (10) SIDELAP FASTENERS PER SPAN (EQUALLY SPACED)

NOTES:
1. DECK SHALL BE ATTACHED TO STEEL JOISTS AND BEAMS USING POWDER ACTIVATED FASTENERS. USE HILTI X-HSN-24 FASTENERS FOR STEEL $1/4''$ THICK AND HILTI X-EMP-19 L15 FASTENERS FOR STEEL >math>1/4''</math> THICK.
2. SIDELAP FASTENERS SHALL BE MADE USING #12 GALVANIZED SCREWS. ALSO ATTACH DECK TO ALL PERIMETER STEEL @ 6' OC MAX.

01/18/2018 8:06:44 PM
 C:\Users\jtroutman\OneDrive\Documents\1720601\1720601.dwg
 CRISER TROUTMAN TANNER CONSULTING ENGINEERS
 3809 PEACETREE AVE., SUITE 102
 WILMINGTON, NC 28403
 910.397.2971
 www.ctengineering.com
 Firm License Number: F 0113
 #7960.00