

**GLASS TYPES**

G1 - 1" INSULATING, BOTH PANES TEMPERED

G2 - 1" INSULATING, LAMINATED

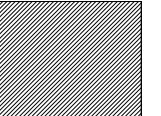
G3 - 1/4" CLEAR GLASS

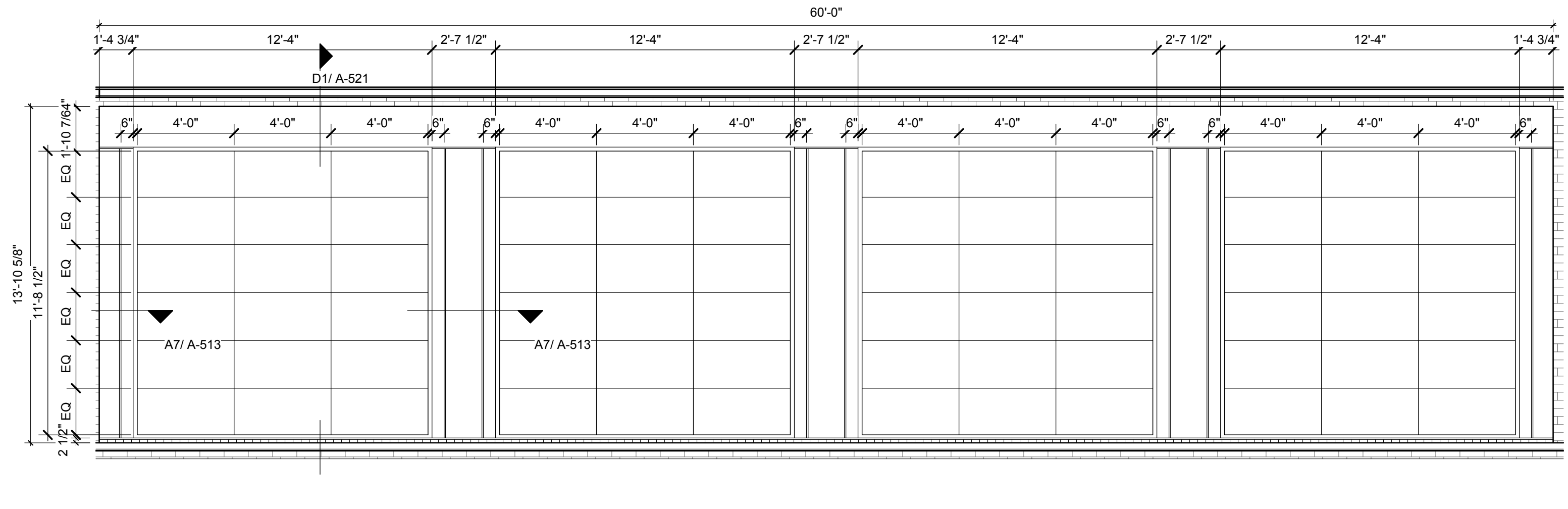
G4 - 1/4" CLEAR TEMPERED GLASS

G5 - 1/4" CLEAR SAFETY WIRE GLASS

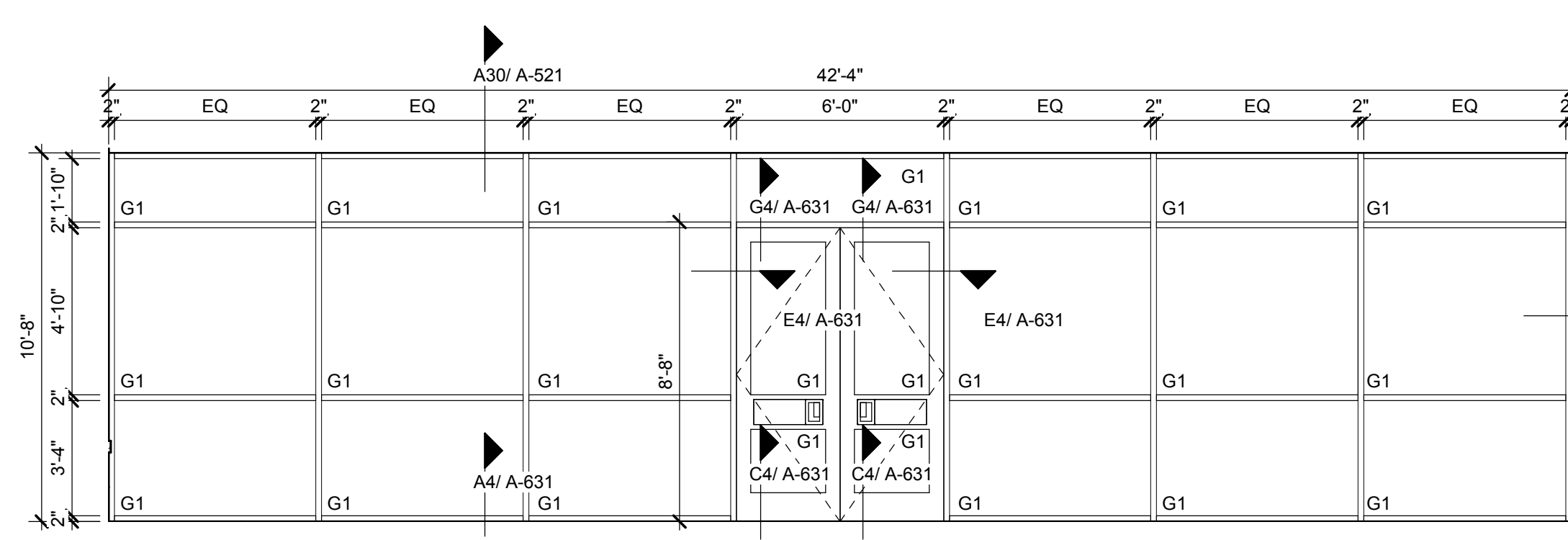
G6 - 1" INSULATING W/ SPANDREL, BOTH PANES TEMPERED

**WINDOW LEGEND**

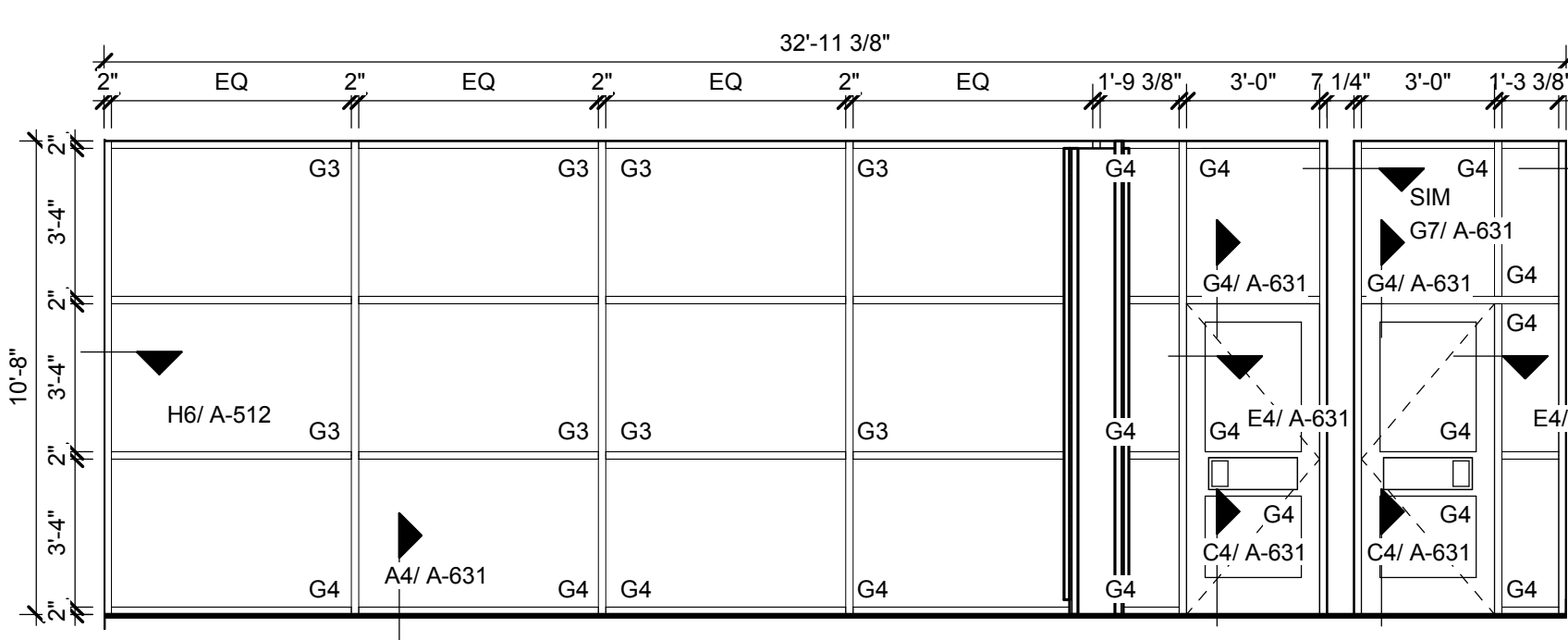
 SPANDREL



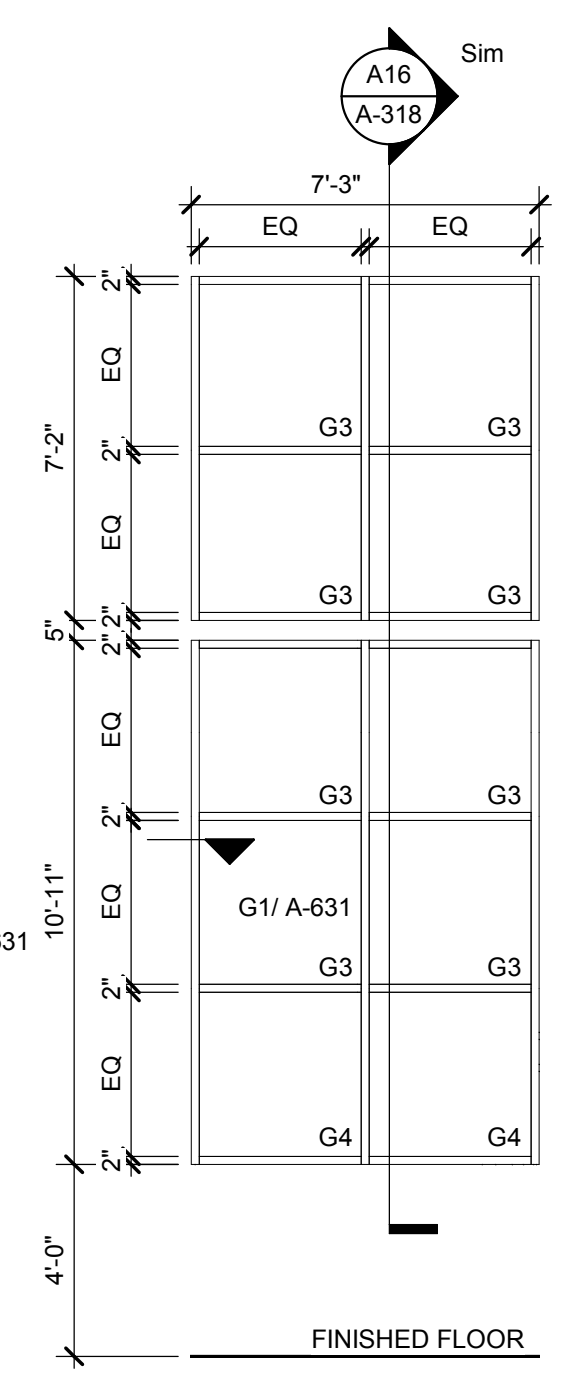
**KALWALL M - GYM CLERESTORY**  
1/4" = 1'-0" K1



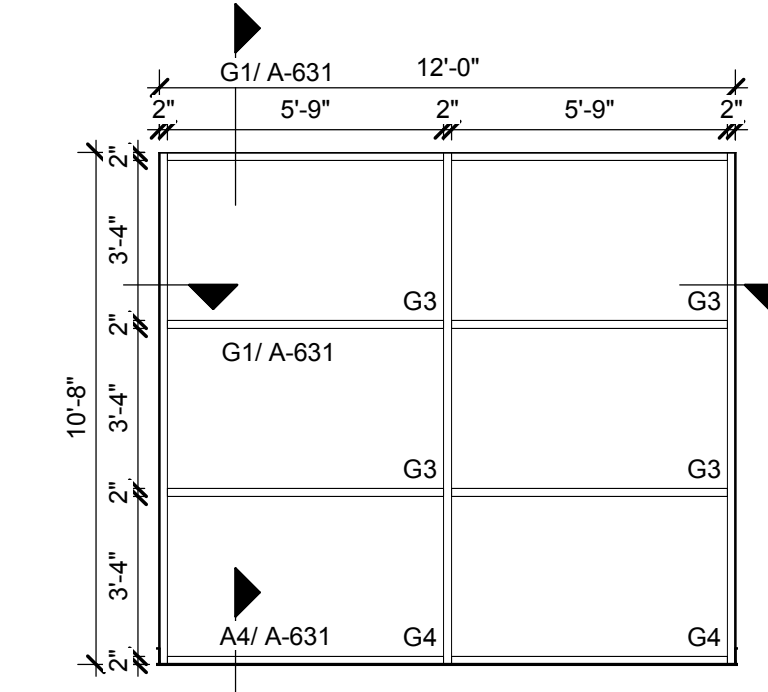
**SF L - MEDIA to COURTYARD**  
1/4" = 1'-0" F13



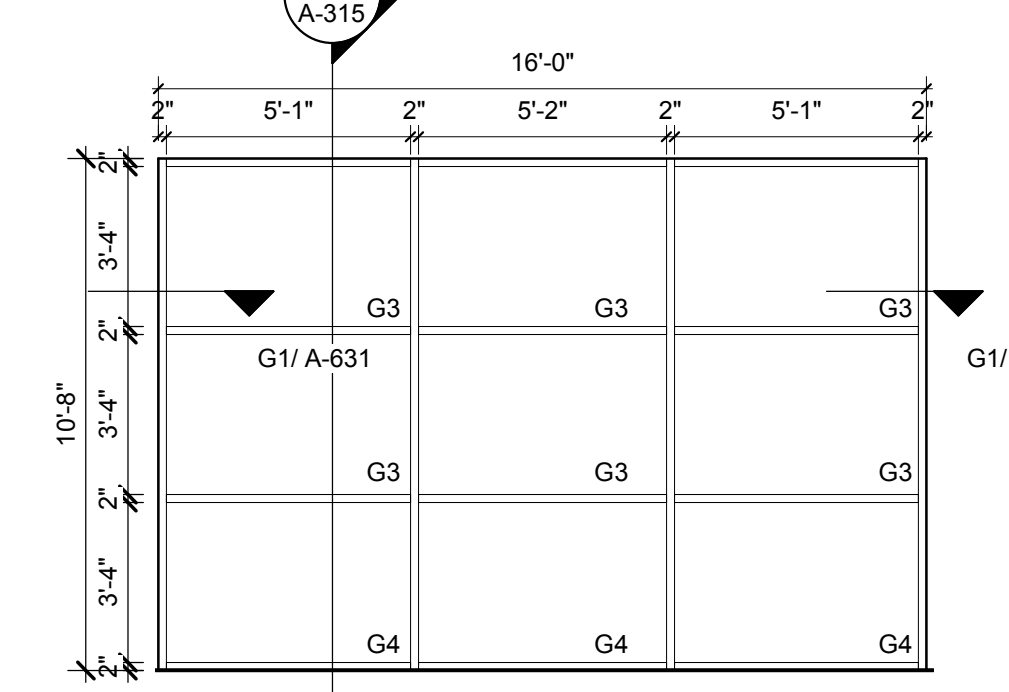
**SF K - MEDIA to MAKER SPACE**  
1/4" = 1'-0" F8



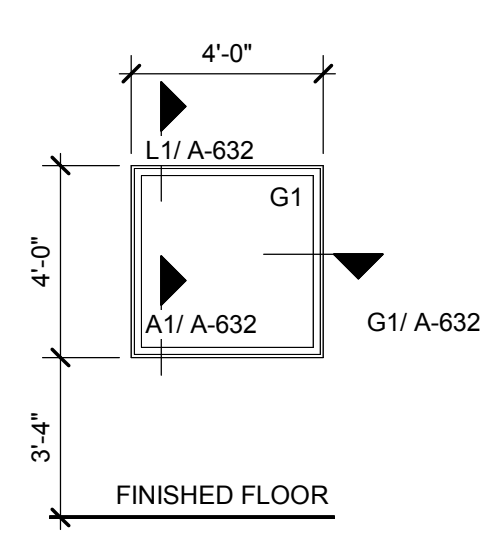
**SF J - STAIRS**  
1/4" = 1'-0" F6



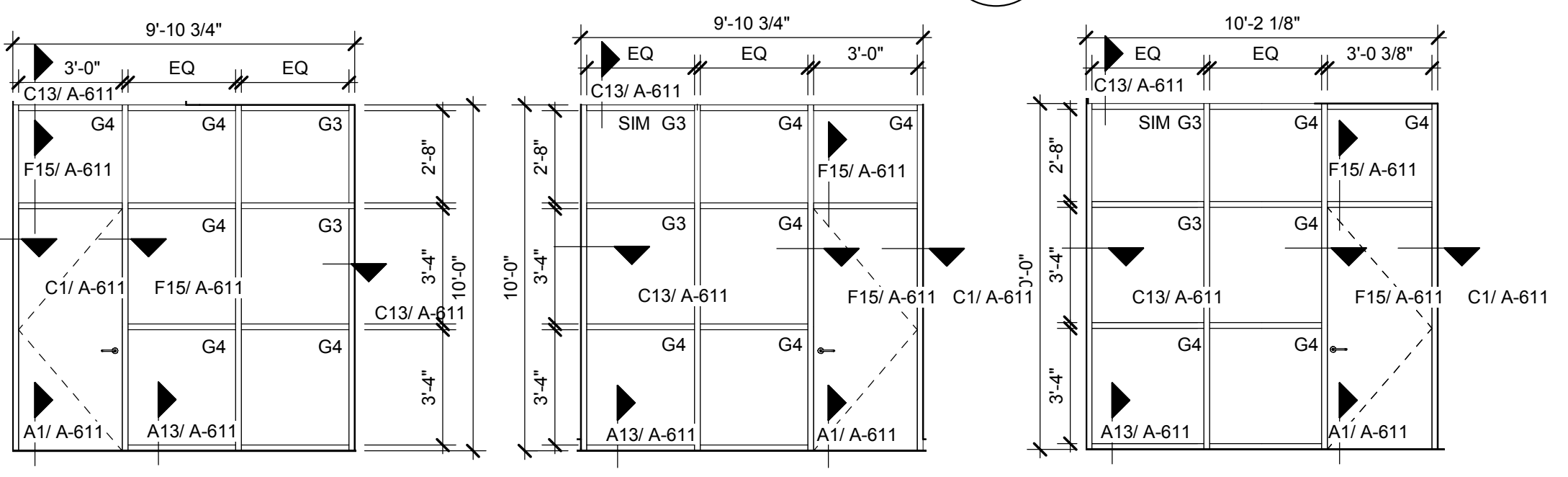
**SF H - MEDIA to COOR**  
1/4" = 1'-0" F4



**SF G - CORR to DINING**  
1/4" = 1'-0" F1  
SMOKE GUARD CURTAIN TO COVER THE WIDTH OF THE GLAZING IN STOREFRONT G



**SF F - OFFICE**  
1/4" = 1'-0" C15



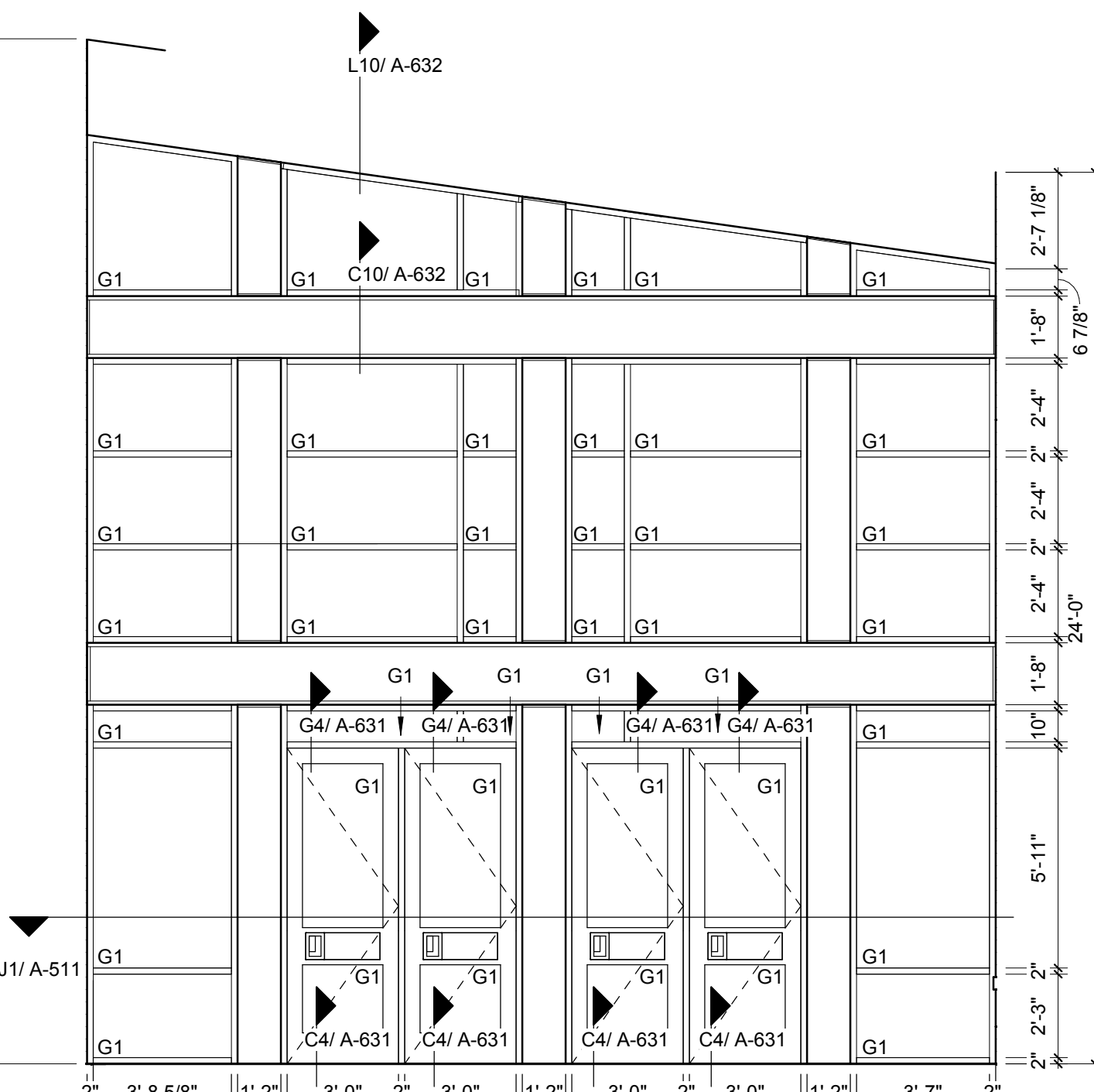
**SF E - OFFICE**  
1/4" = 1'-0" A13

**SF D - ADMIN**  
1/4" = 1'-0" A11

**SF C - RECEPTION**  
1/4" = 1'-0" A9



**SF B - ENTRY VESTIBULE, INT.**  
1/4" = 1'-0" A5



**SF A - ENTRY VESTIBULE, EXT.**  
1/4" = 1'-0" A1

**ARCHITECT**

**ksqdesign**

NEW YORK OKLAHOMA NORTH CAROLINA  
TEXAS COLORADO SOUTH CAROLINA

**KSQ Design**  
1930 CAMDEN ROAD, SUITE 260  
CHARLOTTE, NC 28203  
704.364.3400 office  
704.364.7880 fax  
www.ksqdesign.com

**Owner**

**BRUNSWICK COUNTY SCHOOLS**  
199 SESSIONS DRIVE  
BOYLINA, NC 28422  
910.253.2500 office  
www.bcswan.net

**Civil Engineer**

**MOGILL ASSOCIATES**  
712 VILLAGE ROAD SW, SUITE 103  
SHALLOTTE, NC 28470  
910.755.5872 office  
www.mogillengineer.com

**Structural Engineer**

**CRISER, TROUTMAN, TANNER**  
3809 PEACHTREE AVE., SUITE 102  
WILMINGTON, NC 28403  
910.397.2971 office  
www.ctengineering.com

**MEP Engineer**

**KSQ DESIGN**  
1930 CAMDEN ROAD, SUITE 260  
CHARLOTTE, NC 28203  
704.364.3400 office  
www.ksqdesign.com

**Electrical Consultant**

**QUALITY CONSULTING ENGINEERS, PLLC**  
6277-600 CAROLINA COMMONS DRIVE,  
#350 INDIAN LAND SC 29707  
803.207.5450 office  
jdones@qualityconsultingengineers.com

**Acoustic & Technology Consultant**

**THORBURN ASSOCIATES**  
401 N. TYRON STREET, 10TH FLOOR  
CHARLOTTE, NC 28202  
510.886.7826 office  
www.TA-inc.com

**Building Envelope Consultant**

**SKA ENGINEERING**  
7741 MARKET STREET, SUITE F  
WILMINGTON, NC 28411-9444  
910.442.2000 office  
www.skaeng.com

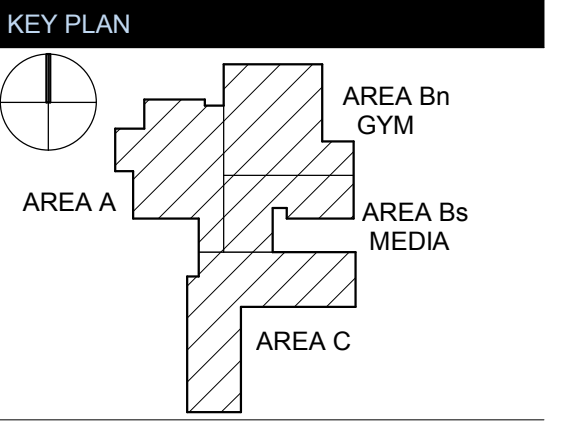
**Food Service Consultant**

**HERBIN DESIGN**  
7325 DORN CIRCLE  
CHARLOTTE, NC 28212-6914  
704.900.0922  
www.herbin.com



**TOWN CREEK MIDDLE SCHOOL**

6370 LAKE PARK DRIVE SE  
WINNABOW, NC 28479



**REVISIONS**

No.	Description	Date
1	Addendum #1	6-7-2018

**ISSUED: CONSTRUCTION DOCUMENTS**

**DATE:** 05/24/2018

**SCALE:** As indicated

**SHEET NAME:** GLAZING SCHEDULE

**SHEET NUMBER:**  
**A-621**