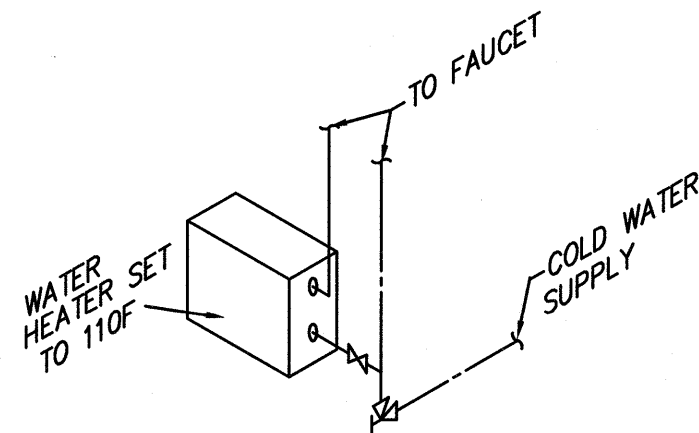
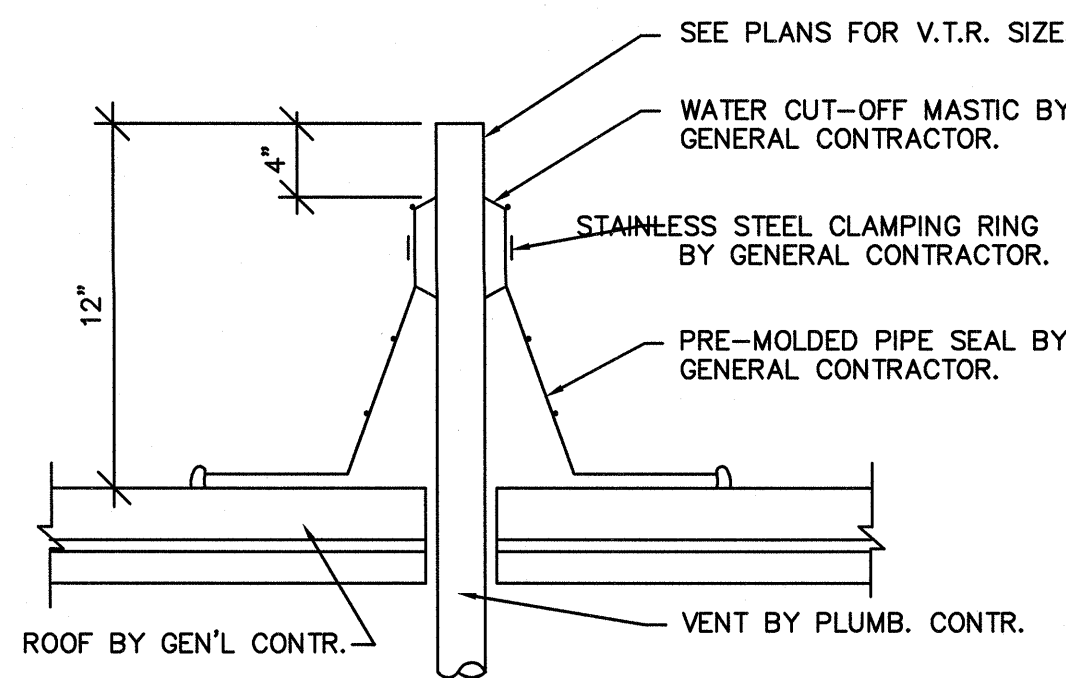


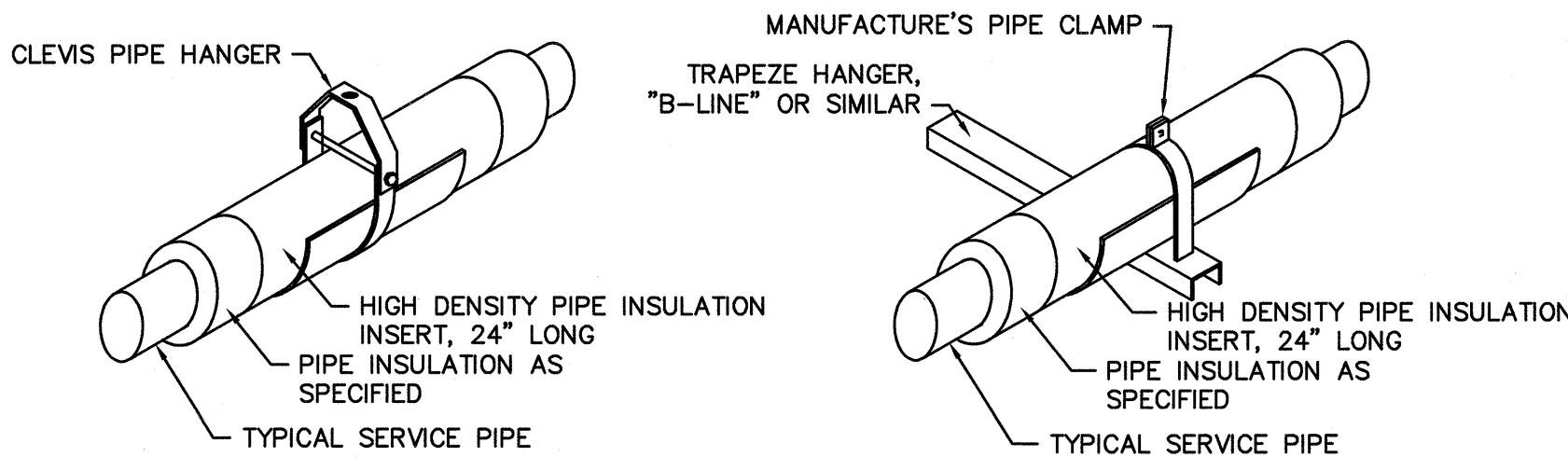
PLUMBING FIXTURE SCHEDULE					
SYMBOL	DESCRIPTION	ROUGH-IN SIZES			REMARKS
		WASTE	C.W.	H.W.	
P-1	COUNTER SINK	1-1/2"	1/2"	1/2"	ADA DEPTH
P-2	ICE MAKER CONNECTION BOX	-	1/2"	-	
P-3	WALL HYDRANT	-	3/4"	-	MOUNT 24" AFG
P-4	FLOOR DRAIN	6"	-	-	CONNECT TO STORM
P-5	WATER HEATER	-	3/4"	3/4"	DETAIL A/P-001, 5.54 KW
P-6	HUB DRAIN	3"	-	-	DETAIL E/P-001



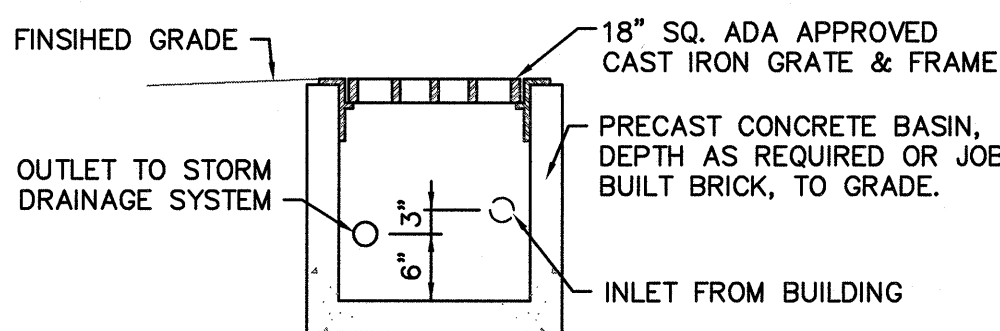
A TANKLESS WATER HEATER DETAIL (P-5)
NO SCALE



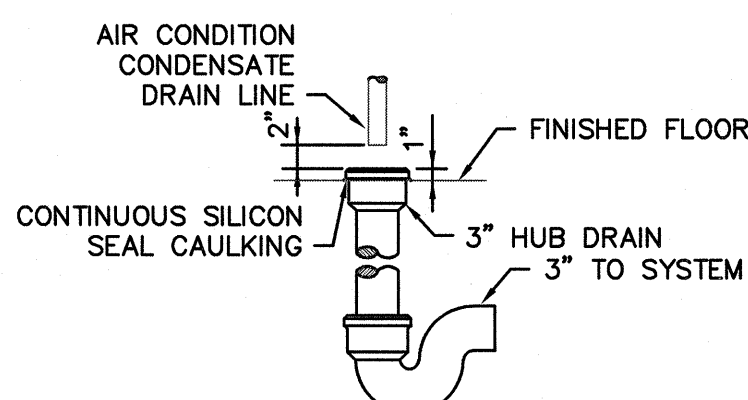
B VENT THRU ROOF DETAIL
NO SCALE



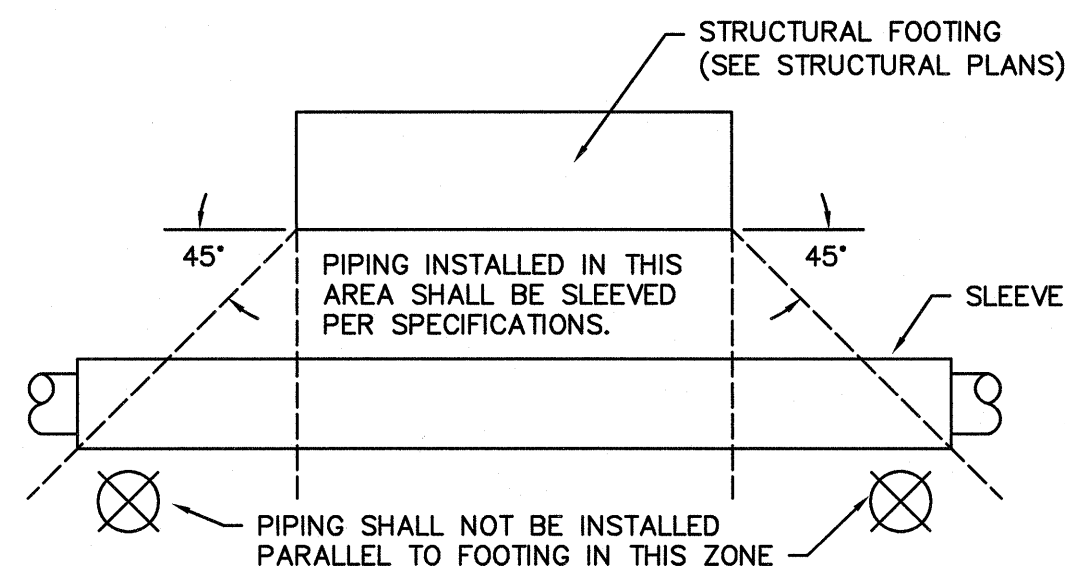
C PIPE HANGER DETAILS
NO SCALE



D CONDENSATE RELIEF BASIN
NO SCALE



E HUB DRAIN (P-6) DETAIL
NO SCALE



F PIPING UNDER FOOTINGS
NO SCALE

LEGEND

X	PIPING TO BE REMOVED (LINE SYMBOL INDICATES SERVICE)
EW	EXISTING WASTE PIPING TO REMAIN
ERDL	EXISTING ROOF DRAIN LEADER PIPING TO REMAIN
E	EXISTING COLD WATER PIPING TO REMAIN
EHWR	EXISTING HOT WATER PIPING TO REMAIN
EG	EXISTING FUEL GAS PIPING (NATURAL) TO REMAIN
C	CONDENSATE DRAINAGE PIPING
W	WASTE PIPING BELOW FINISHED FLOOR
V	VENT PIPING
RDL	ROOF DRAIN LEADER
ORDL	OVERFLOW ROOF DRAIN LEADER
CW	COLD WATER PIPING
HW	HOT WATER PIPING
HWR	HOT WATER RETURN PIPING
⊗	BALL/BUTTERFLY VALVE
⊕	BALL/BUTTERFLY VALVE IN VALVE BOX FLUSH WITH GRADE
⌵	BALANCING VALVE
⌴	GAS VALVE
⌵	CHECK VALVE
⌵	SOLENOID VALVE
⌵	VALVE IN RISE
⌵	PIPE ELBOW TURNED DOWN
⌵	PIPE ELBOW TURNED UP
⌵	PIPE TEE TURNED DOWN
⌵	PIPE TEE TURNED UP
⌵	CAP
⌵	UNION
⌵	STRAINER
⌵	DOUBLE CHECK VALVE BACKFLOW PREVENTER
⌵	REDUCED PRESSURE BACKFLOW PREVENTER
⌵	SHOCK ARRESTER, 'A' INDICATES PLUMBING DRAINAGE INSTITUTE STANDARD SIZE
⌵	ASME PRESSURE TEMPERATURE RELIEF VALVE
VTR	VENT THRU ROOF
GVTR	GREASE VENT THRU ROOF
CI	CAST IRON
CO	CLEANOUT
ECO	EXTERIOR CLEANOUT
WCO	WALL CLEANOUT
FCO	FLOOR CLEANOUT
RD	ROOF DRAIN
ORD	OVERFLOW ROOF DRAIN
EXFCO	EXISTING FLOOR CLEANOUT
EXECO	EXISTING EXTERIOR CLEANOUT
EXRD	EXISTING ROOF DRAIN
AFF	ABOVE FINISHED FLOOR
BFF	BELOW FINISHED FLOOR
AFG	ABOVE FINISHED GRADE
BFG	BELOW FINISHED GRADE
INV.	INVERT ELEVATION
⊗	TERMINATION POINT OF DEMOLITION
⊗	POINT OF NEW CONNECTION TO EXISTING
⊗	4 HOUR FIRE WALL
⊗	2 HOUR FIRE WALL
⊗	1 HOUR FIRE WALL
⊗	UNRATED SMOKE PARTITION
⊗	EXISTING FIXTURE TO BE REMOVED
⊗	EXISTING FIXTURE TO REMAIN
⊗	NEW FIXTURE
⊗	CEILING ACCESS PANEL AS SPECIFIED

NUMBER INDICATES
PLAN OR SECTION

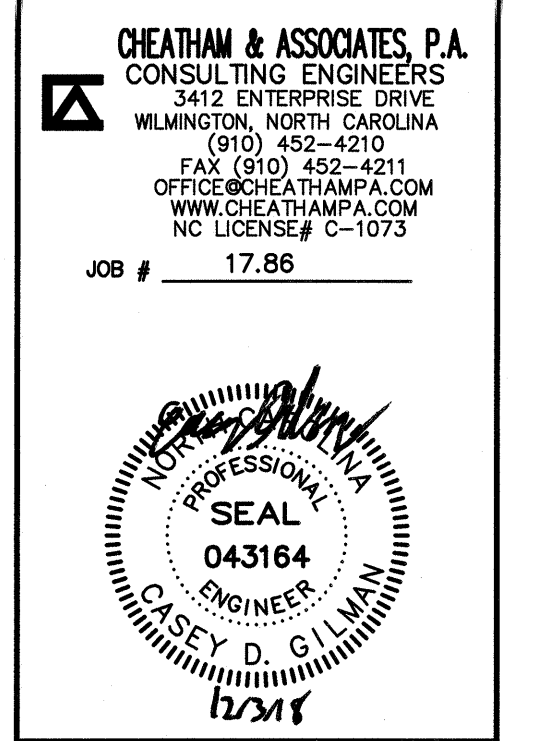
LETTER INDICATES
ELEVATION OR DETAIL

SHEET NUMBER WHERE
PLAN, SECTION, ELEVATION
OR DETAIL IS DRAWN

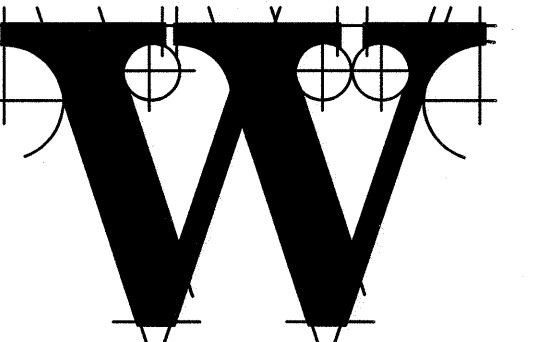


TERMINAL IMPROVEMENTS CONTRACT 2

WILMINGTON INTERNATIONAL AIRPORT
1740 AIRPORT BOULEVARD, SUITE 12
WILMINGTON, NC 28405



ARCHITECT



THE WILSON GROUP
P O BOX 5510
CHARLOTTE, NC 28299
(704) 331-9747

PROJECT MANAGER & CIVIL ENGINEER
TALBERT & BRIGHT
4810 SHELLEY DRIVE
WILMINGTON, NC 28405
(910) 763-5350 FIRM NO.: C-0713

CONSULTING ARCHITECT
LS3P
101 NORTH THIRD STREET, SUITE 500
WILMINGTON, NC 28401
(910) 790-9901

STRUCTURAL ENGINEER
STEWART
101 N. TRYON ST., SUITE 1400
CHARLOTTE, NC 28202
(704) 909-3523 FIRM NO.: C-1051

P, M & E ENGINEER
CHEATHAM & ASSOC.
3412 ENTERPRISE DRIVE
WILMINGTON, NC 28405
(910) 452-4210

BAGGAGE HANDLING CONSULTANTS
BNP ASSOCIATES
1981 POST ROAD
FAIRFIELD, CT 06824
(203) 792-3000

SPECIALTY LIGHTING CONSULTANT
HARTRANFT LIGHTING DESIGN
401 HAWTHORNE LANE, SUITE 110-269
CHARLOTTE, NC 28204
(240) 731-1058

REVISIONS

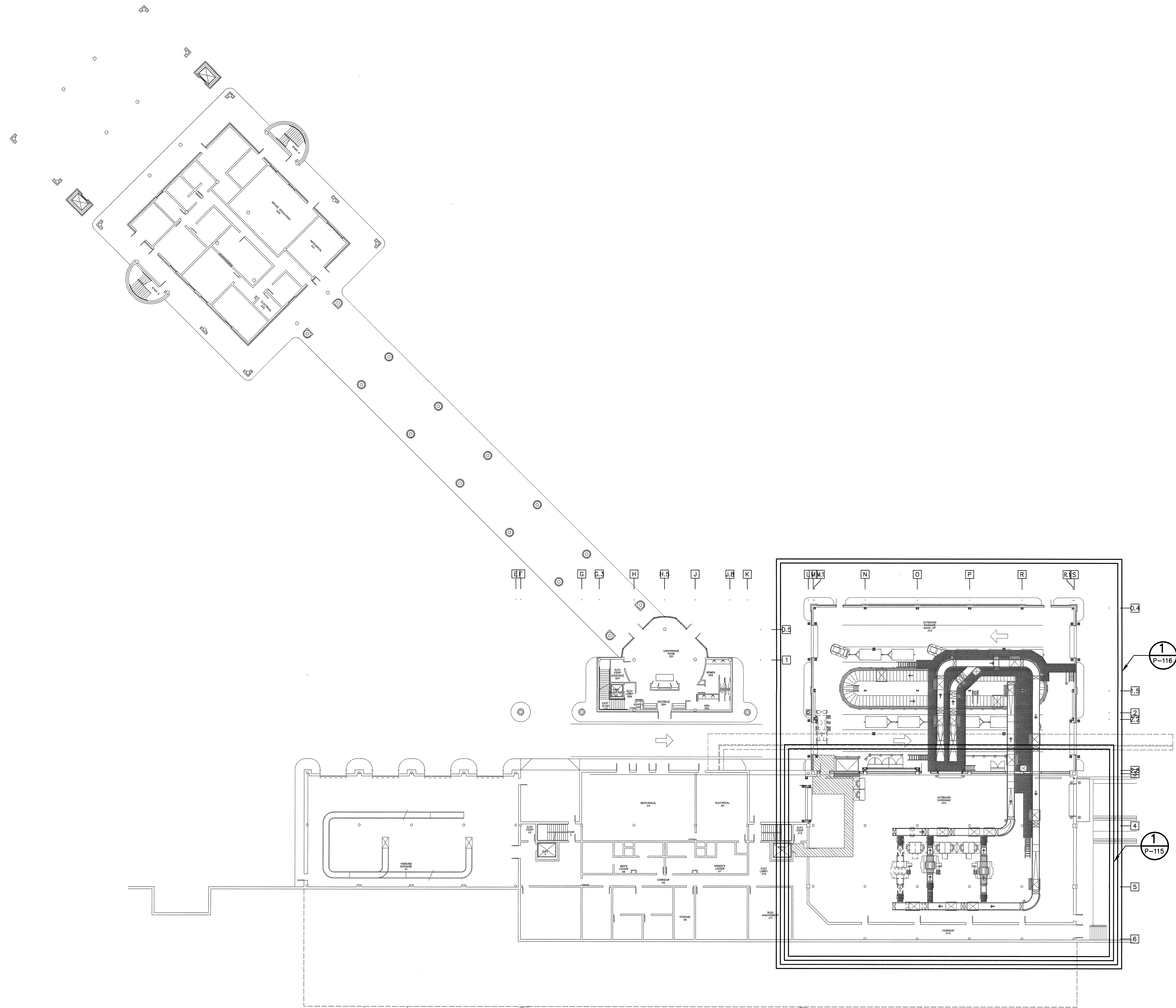
1	1
2	2
3	3
4	4
5	5
6	6
7	7
8	8
9	9
10	10

DATE: NOVEMBER 30, 2018
PROJECT NO.: 9202-000
SHEET TITLE:

PLUMBING LEGEND, SCHEDULE AND DETAILS

SHEET NUMBER:

P-001



1 OVERALL RAMP LEVEL FLOOR PLAN - PLUMBING
SCALE: 1" = 20'-0"

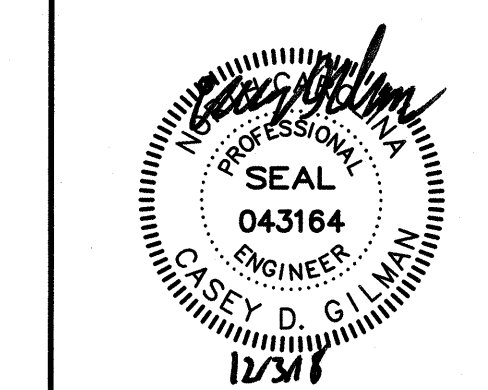
GRAPHIC SCALE: 1"=20'-0"
0 5 10 20 40



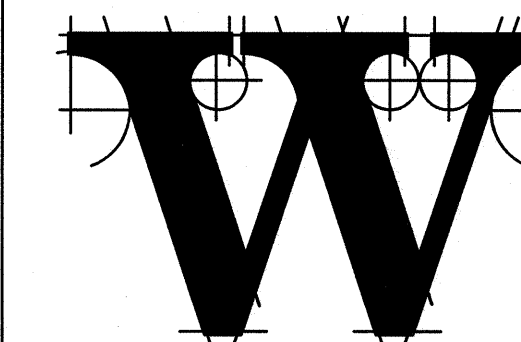
TERMINAL IMPROVEMENTS CONTRACT 2

WILMINGTON INTERNATIONAL AIRPORT
1740 AIRPORT BOULEVARD, SUITE 12
WILMINGTON, NC 28405

CHEATHAM & ASSOCIATES, P.A.
CONSULTING ENGINEERS
3412 ENTERPRISE DRIVE
WILMINGTON, NORTH CAROLINA
(910) 452-4210
FAX (910) 452-4211
WWW.CHEATHAMPA.COM
NC LICENSE# C-1073
JOB # 17.86



ARCHITECT



THE WILSON GROUP
P.O. BOX 5510
CHARLOTTE, NC 28299
(704) 331-9747

PROJECT MANAGER & CIVIL ENGINEER
TALBERT & BRIGHT
4810 SHELLEY DRIVE
WILMINGTON, NC 28405
(910) 763-5350 FIRM NO.: C-0713

CONSULTING ARCHITECT

LS3P
101 NORTH THIRD STREET, SUITE 500
WILMINGTON, NC 28401
(910) 790-9901

STRUCTURAL ENGINEER

STEWART
101 N. TRYON ST., SUITE 1400
CHARLOTTE, NC 28202
(704) 909-3523 FIRM NO.: C-1051

P, M & E ENGINEER

CHEATHAM & ASSOC.
3412 ENTERPRISE DRIVE
WILMINGTON, NC 28405
(910) 452-4210

BAGGAGE HANDLING CONSULTANTS

BNP ASSOCIATES
1981 POST ROAD
FAIRFIELD, CT 06824
(203) 792-3000

SPECIALTY LIGHTING CONSULTANT

**HARTRANFT
LIGHTING DESIGN**
401 HAWTHORNE LANE, SUITE 110-269
CHARLOTTE, NC 28204
(240) 731-1058

REVISIONS

DATE: NOVEMBER 30, 2018
PROJECT NO.: 9202-000
SHEET TITLE:

**OVERALL RAMP
LEVEL FLOOR PLAN
PLUMBING**

SHEET NUMBER:

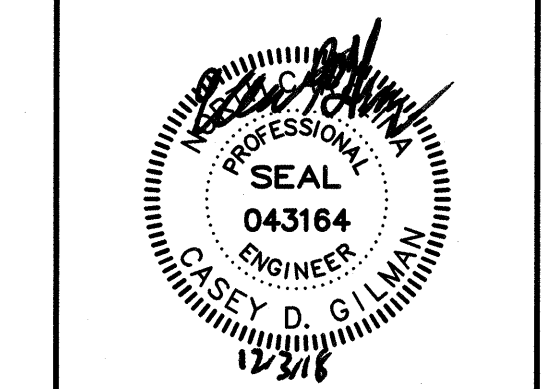
P-110



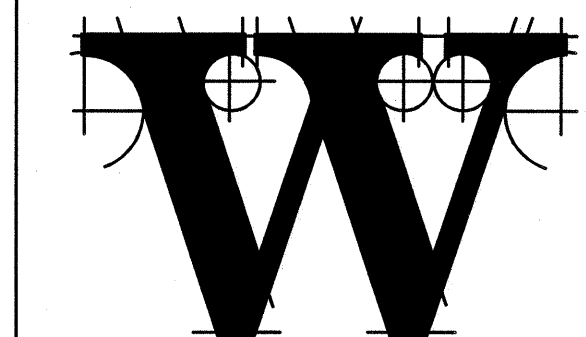
TERMINAL IMPROVEMENTS CONTRACT 2

WILMINGTON INTERNATIONAL AIRPORT
1740 AIRPORT BOULEVARD, SUITE 12
WILMINGTON, NC 28405

CHEATHAM & ASSOCIATES, P.A.
CONSULTING ENGINEERS
3412 ENTERPRISE DRIVE
WILMINGTON, NORTH CAROLINA
(910) 452-4210
FAX (910) 452-4211
OFFICE@CHEATHAMPA.COM
WWW.CHEATHAMPA.COM
NC LICENSE # C-1073
JOB # 17.86



ARCHITECT



THE WILSON GROUP
P O BOX 5510
CHARLOTTE, NC 28229
(704) 331-9747

PROJECT MANAGER & CIVIL ENGINEER
TALBERT & BRIGHT
4810 SHELLEY DRIVE
WILMINGTON, NC 28405
(910) 763-5350 FIRM NO.: C-0713

CONSULTING ARCHITECT
LS3P
101 NORTH THIRD STREET, SUITE 500
WILMINGTON, NC 28401
(910) 795-9901

STRUCTURAL ENGINEER
STEWART
101 N. TRYON ST., SUITE 1400
CHARLOTTE, NC 28202
(704) 909-3523 FIRM NO.: C-1051

P. M. & E. ENGINEER
CHEATHAM & ASSOC.
3412 ENTERPRISE DRIVE
WILMINGTON, NC 28405
(910) 452-4210

BAGGAGE HANDLING CONSULTANTS
BNP ASSOCIATES
1981 POST ROAD
FAIRFIELD, CT 06824
(203) 792-3000

SPECIALTY LIGHTING CONSULTANT
HARTRANFT LIGHTING DESIGN
401 HAWTHORNE LANE, SUITE 110-269
CHARLOTTE, NC 28204
(240) 731-1058

REVISIONS

DATE: NOVEMBER 30, 2018
PROJECT NO.: 9202-000
SHEET TITLE:

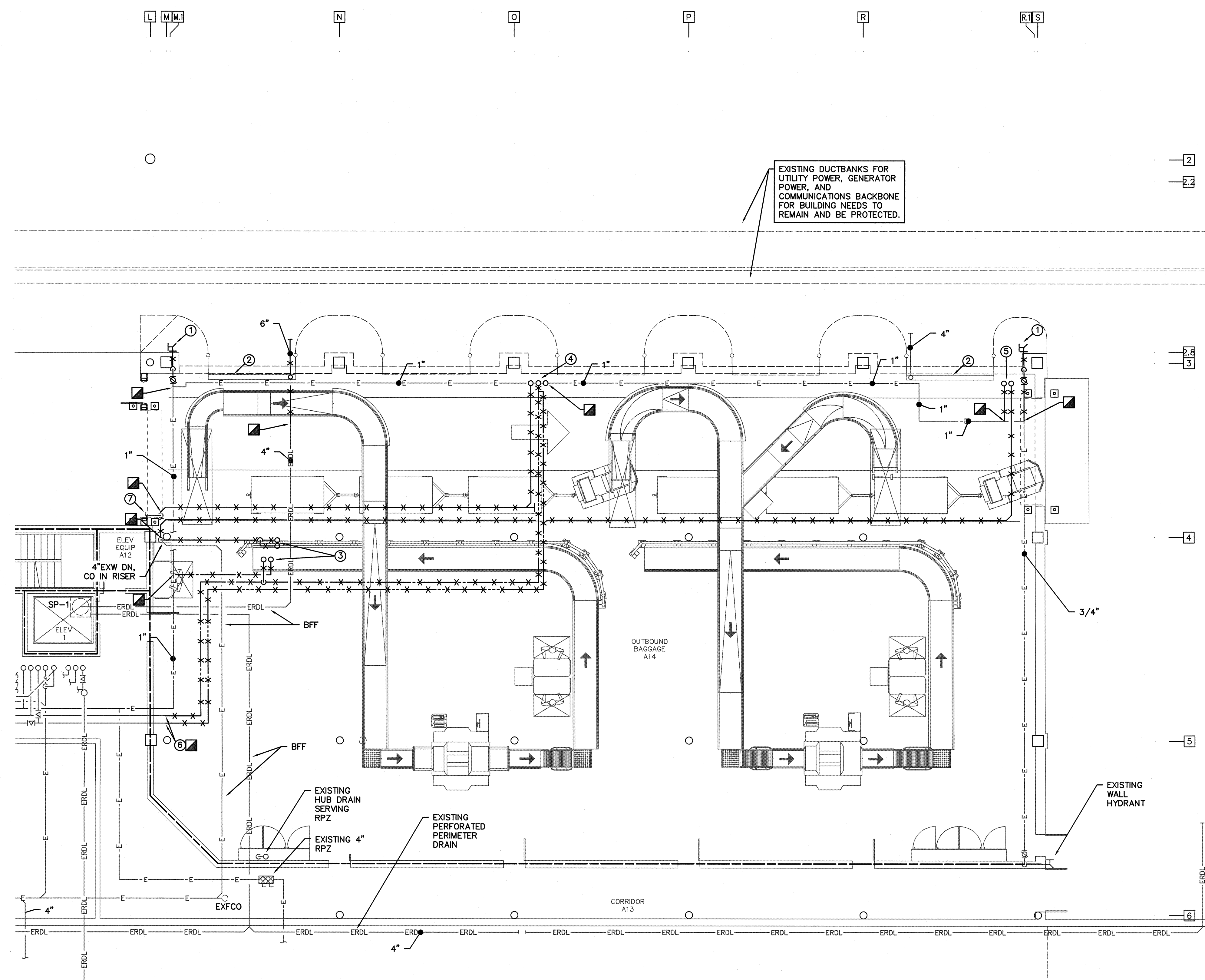
ENLARGED RAMP LEVEL FLOOR PLAN PLUMBING DEMOLITION

SHEET NUMBER:

P-115

KEYED NOTES: (THIS SHEET ONLY)

- 1 REMOVE EXISTING WALL HYDRANT AND ASSOCIATED PIPING BACK TO MAIN AND CAP.
- 2 EXISTING TRENCH DRAIN TO REMAIN. CONNECTED PIPING TO BE EXTENDED.
- 3 REMOVE EXISTING HW, CW, W, AND V UP, SERVING EXISTING RESTROOMS. REMOVE CW BACK TO MAIN AND CAP. REMOVE HW BACK TO POINT INDICATED. REMOVE W BACK TO RISER AND CAP. REMOVE V ENTIRELY.
- 4 REMOVE EXISTING CW, HW, AND W UP, SERVING EXISTING BREAK ROOM. REMOVE CW PIPING BACK TO MAIN AND CAP. REMOVE HW BACK TO POINT INDICATED AND CAP. REMOVE W BACK TO MAIN RISER AND CAP.
- 5 REMOVE EXISTING CW AND W UP, SERVING EXISTING BREAK ROOM. REMOVE CW PIPING BACK TO MAIN AND CAP. REMOVE W BACK TO POINT INDICATED AND CAP.
- 6 REMOVE EXISTING HW AND HWR BACK TO THIS POINT. PIPING SHALL BE RECONNECTED.
- 7 EXISTING 4"W ABOVE FLOOR SHALL REMAIN. MAIN SHALL BE CAPPED IMMEDIATELY UPSTREAM.



1 ENLARGED RAMP LEVEL FLOOR PLAN - PLUMBING DEMOLITION
SCALE: 1/8" = 1'-0"

GRAPHIC SCALE: 1/8"=1'-0"
0 2 4 8 16

PHASING NOTES:

- ARCHITECTURAL PHASE 1: DEMO BRICK VENEER.
ARCHITECTURAL PHASE 2: DEMO REMAINING EXTERIOR WALL.
BHS PHASE 2: DEMO BHS EQUIPMENT.
BHS PHASE 3: DEMO BHS EQUIPMENT.

SEE ARCHITECTURAL PLANS A-131 THROUGH A-137 FOR ADDITIONAL PHASING INFORMATION.
SEE BAGGAGE HANDLING SYSTEM PLANS B-701 THROUGH B-708 FOR ADDITIONAL PHASING INFORMATION.

GENERAL NOTES:

1. EXISTING INFORMATION IS BASED ON A FIELD SURVEY AND EXISTING DRAWINGS. SOME INFORMATION PRESENTED IS ESTIMATED OR ASSUMED BASED ON EXPERIENCE. CONTRACTOR SHALL FIELD VERIFY CONDITIONS DURING BIDDING PHASE. PRIOR TO SUBMITTING BID AND DURING THE COURSE OF WORK AND ALERT THE ARCHITECT AND/OR ENGINEER OF DIFFERENCES BETWEEN FIELD CONDITIONS AND THE PLUMBING DRAWINGS THAT WILL PREVENT ANY PORTIONS OF THE PLUMBING SCOPE OF WORK FROM BEING INSTALLED AS DESIGNED.
2. AT THE START OF CONSTRUCTION, PRIOR TO DEMOLITION, THE CONTRACTOR SHALL VERIFY SIZE, LOCATION, AND DEPTH OF EXISTING STORM PIPING, EXISTING SOUTH SIDE OF EXISTING BUILDING BELOW PROPOSED ADDITION. REPORT FINDINGS TO ARCHITECT FOR CONSIDERATION OF POSSIBLE ALTERNATE (AND MORE DIRECT) STORM PIPE ROUTING FROM WHAT IS CURRENTLY INDICATED ON DRAWING P-116.



TERMINAL IMPROVEMENTS CONTRACT 2

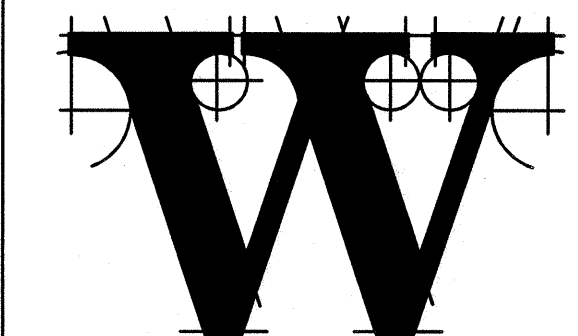
WILMINGTON INTERNATIONAL AIRPORT
1740 AIRPORT BOULEVARD, SUITE 12
WILMINGTON, NC 28405

CHEATHAM & ASSOCIATES, P.A.
CONSULTING ENGINEERS
3412 ENTERPRISE DRIVE
WILMINGTON, NORTH CAROLINA
(910) 452-4211
FAX (910) 452-4211
OFFICE@CHEATHAMPA.COM
WWW.CHEATHAMPA.COM
NC LICENSE# C-1073

JOB # 17.86



ARCHITECT



THE WILSON GROUP

P.O. BOX 5510
CHARLOTTE, NC 28299
(704) 331-9747

PROJECT MANAGER & CIVIL ENGINEER

TALBERT & BRIGHT

4810 SHELLEY DRIVE
WILMINGTON, NC 28405
(910) 763-5350 FIRM NO.: C-0713

CONSULTING ARCHITECT

LS3P

101 NORTH THIRD STREET, SUITE 500
WILMINGTON, NC 28401
(910) 795-9901

STRUCTURAL ENGINEER

STEWART

101 N. TRYON ST., SUITE 1400
CHARLOTTE, NC 28202
(704) 909-3523 FIRM NO.: C-1051

P. M. & E. ENGINEER

CHEATHAM & ASSOC.

3412 ENTERPRISE DRIVE
WILMINGTON, NC 28405
(910) 452-4210

BAGGAGE HANDLING CONSULTANTS

BNP ASSOCIATES

1981 POST ROAD
FAIRFIELD, CT 06824
(203) 792-3000

SPECIALTY LIGHTING CONSULTANT

HARTRANFT

LIGHTING DESIGN

401 HAWTHORNE LANE, SUITE 110-269
CHARLOTTE, NC 28204
(240) 731-1058

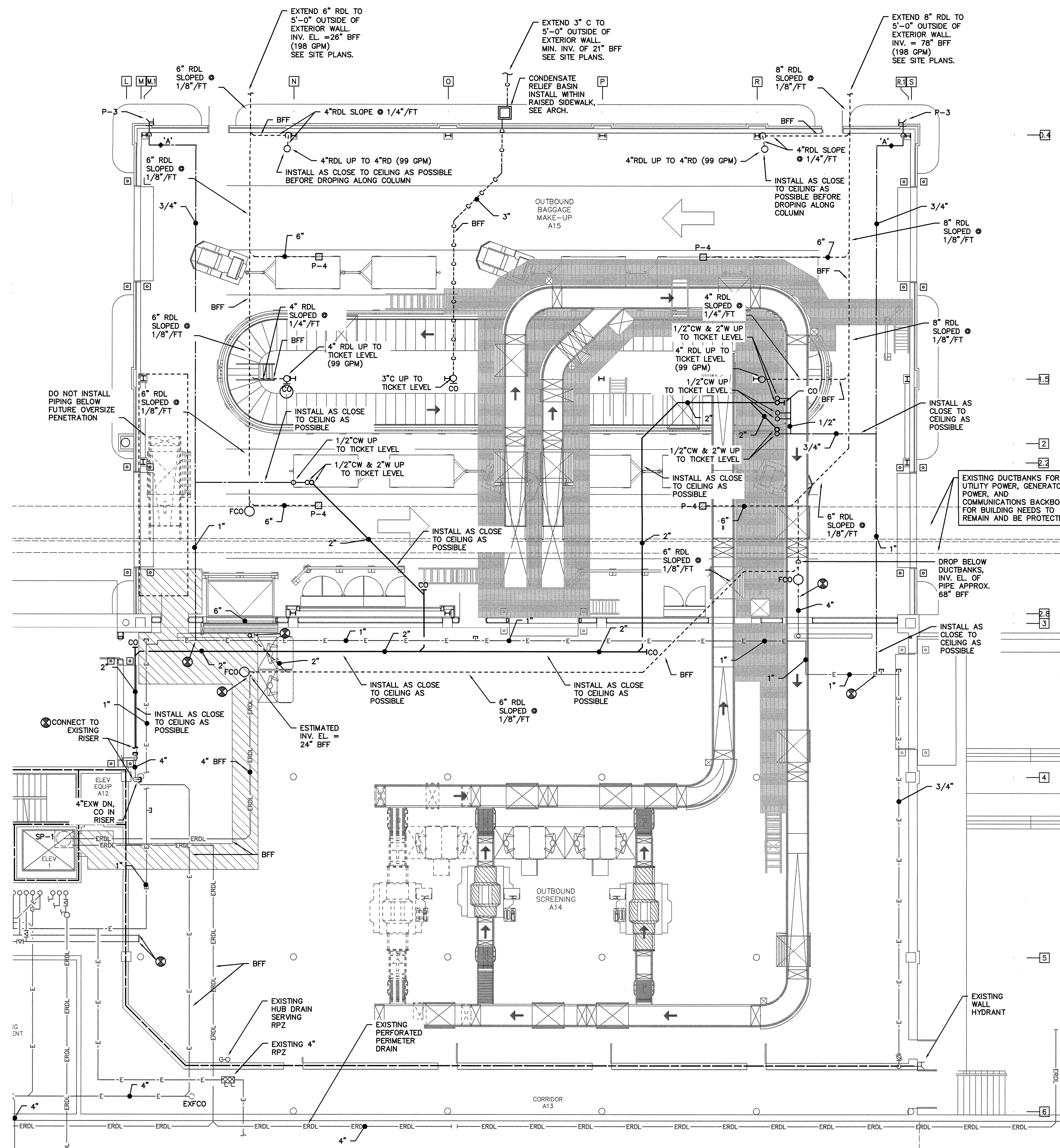
REVISIONS

DATE: NOVEMBER 30, 2018
PROJECT NO.: 9202-000
SHEET TITLE:

ENLARGED RAMP
LEVEL FLOOR PLAN
PLUMBING

SHEET NUMBER:

P-116



1 ENLARGED RAMP LEVEL FLOOR PLAN - PLUMBING
SCALE: 1/8" = 1'-0"

GRAPHIC SCALE: 1/8"=1'-0"
0 2 4 6 8 10 12 14 16

GENERAL NOTES:

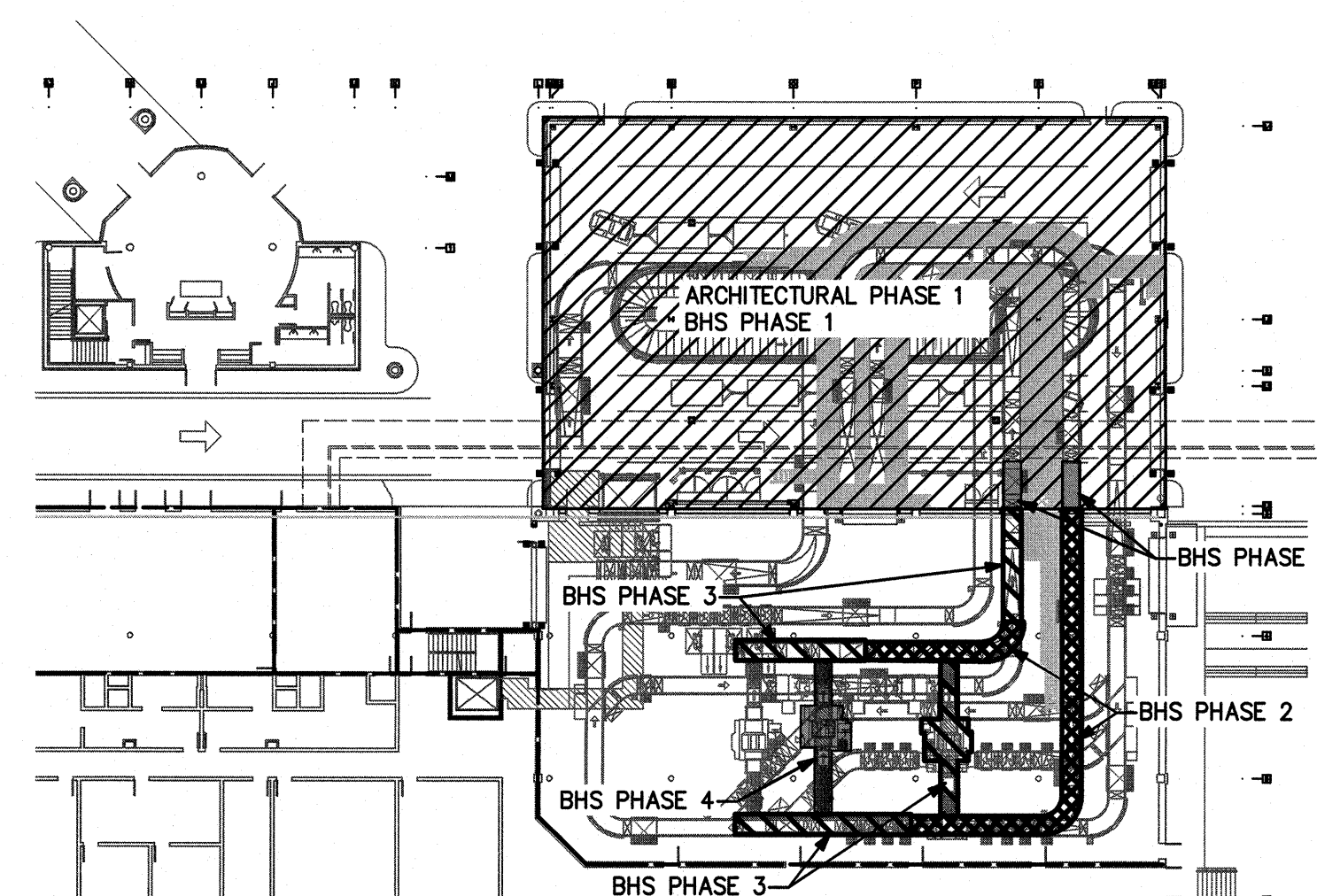
- EXISTING INFORMATION IS BASED ON A FIELD SURVEY AND EXISTING DRAWINGS. SOME INFORMATION PRESENTED IS ESTIMATED OR ASSUMED BASED ON EXPERIENCE. CONTRACTOR SHALL FIELD VERIFY CONDITIONS DURING BIDDING PHASE, PRIOR TO SUBMITTING BID AND DURING THE COURSE OF WORK AND ALERT THE ARCHITECT AND/OR ENGINEER OF DIFFERENCES BETWEEN FIELD CONDITIONS AND THE PLUMBING DRAWINGS THAT WILL PREVENT ANY PORTIONS OF THE PLUMBING SCOPE OF WORK FROM BEING INSTALLED AS DESIGNED.
- AT THE START OF CONSTRUCTION, PRIOR TO DEMOLITION, THE CONTRACTOR SHALL VERIFY SIZE, LOCATION, AND DEPTH OF EXISTING STORM PIPING, EXITING SOUTH SIDE OF EXISTING BUILDING BELOW PROPOSED ADDITION. REPORT FINDINGS TO ARCHITECT FOR CONSIDERATION OF POSSIBLE ALTERNATE (AND MORE DIRECT) STORM PIPE ROUTING FROM WHAT IS CURRENTLY INDICATED.

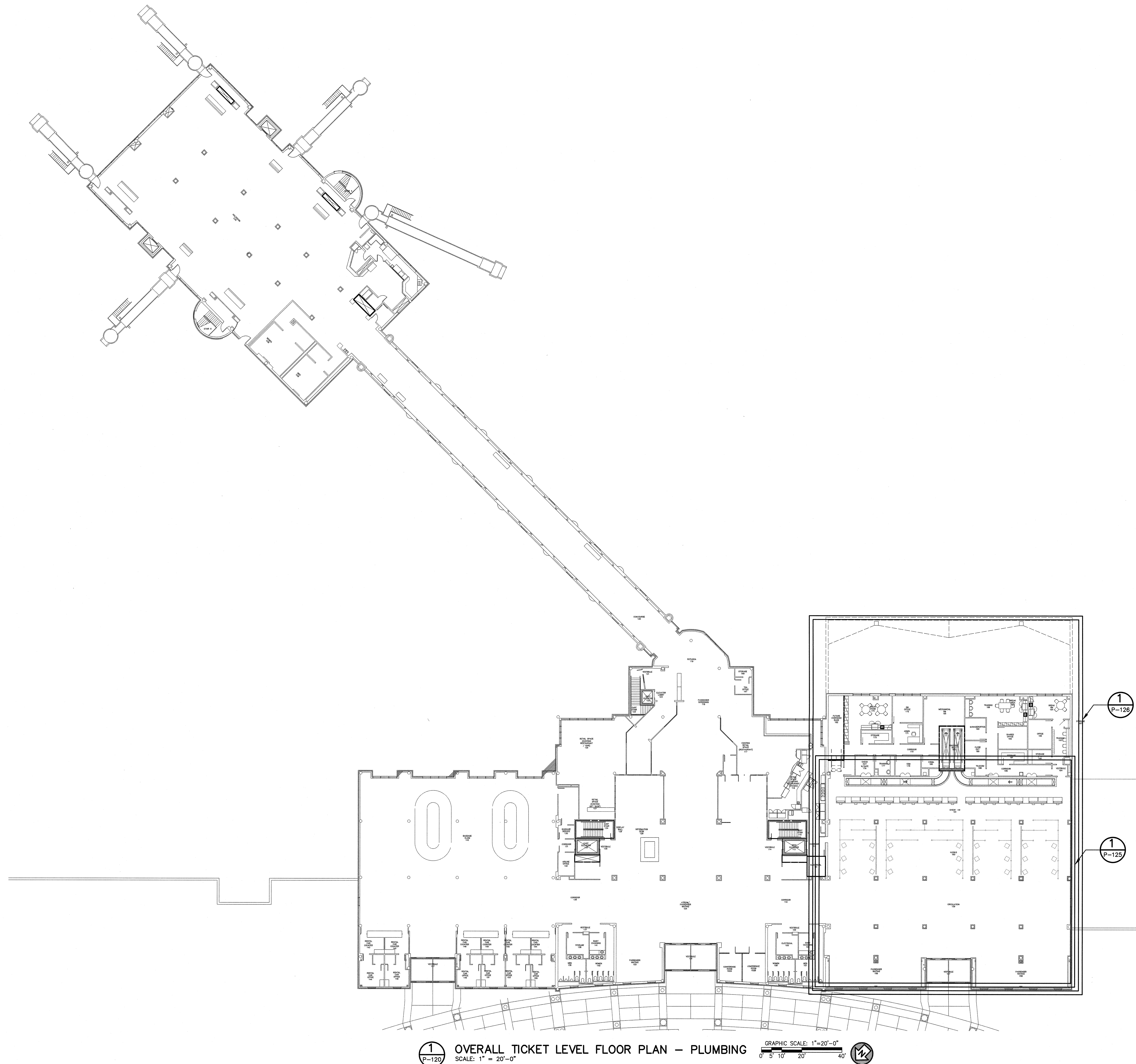
PHASING NOTES:

- ARCHITECTURAL PHASE 1: CONSTRUCT ADDITION.
BHS PHASE 1: INSTALL EQUIPMENT.
BHS PHASE 2: INSTALL EQUIPMENT.
BHS PHASE 3: INSTALL EQUIPMENT.
BHS PHASE 4: INSTALL EQUIPMENT.

SEE ARCHITECTURAL PLANS A-131 THROUGH A-137 FOR ADDITIONAL PHASING INFORMATION.

SEE BAGGAGE HANDLING SYSTEM PLANS B-701 THROUGH B-708 FOR ADDITIONAL PHASING INFORMATION.





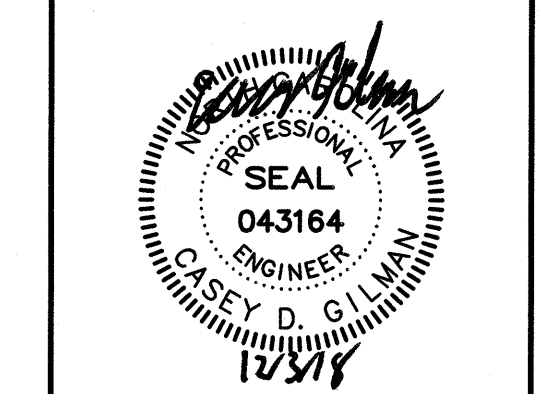
1 OVERALL TICKET LEVEL FLOOR PLAN - PLUMBING
SCALE: 1" = 20'-0"



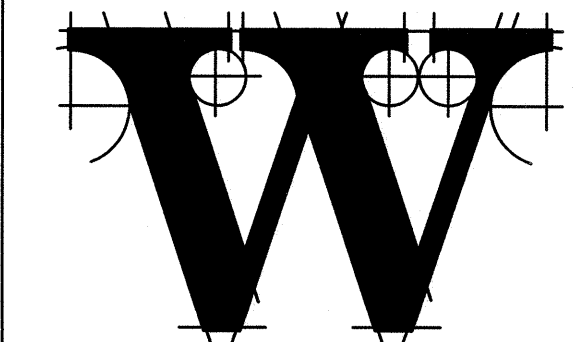
TERMINAL IMPROVEMENTS CONTRACT 2

WILMINGTON INTERNATIONAL AIRPORT
1740 AIRPORT BOULEVARD, SUITE 12
WILMINGTON, NC 28405

CHEATHAM & ASSOCIATES, P.A.
CONSULTING ENGINEERS
3412 ENTERPRISE DRIVE
WILMINGTON, NORTH CAROLINA
(910) 452-4210
FAX (910) 452-4211
WWW.CHEATHAMPA.COM
NC LICENSE# C-1073
JOB # 17.86



ARCHITECT



THE WILSON GROUP
P.O. BOX 5510
CHARLOTTE, NC 28209
(704) 331-9747

PROJECT MANAGER & CIVIL ENGINEER
TALBERT & BRIGHT
4810 SHELLEY DRIVE
WILMINGTON, NC 28405
(910) 763-5350 FIRM NO.: C-0713

CONSULTING ARCHITECT
LS3P
101 NORTH THIRD STREET, SUITE 500
WILMINGTON, NC 28401
(910) 790-6901

STRUCTURAL ENGINEER
STEWART
101 N. TRYON ST., SUITE 1400
CHARLOTTE, NC 28202
(704) 909-3523 FIRM NO.: C-1051

P, M & E ENGINEER
CHEATHAM & ASSOC.
3412 ENTERPRISE DRIVE
WILMINGTON, NC 28405
(910) 452-4210

BAGGAGE HANDLING CONSULTANTS
BNP ASSOCIATES
1981 POST ROAD
FAIRFIELD, CT 06824
(203) 792-3000

SPECIALTY LIGHTING CONSULTANT
HARTRANFT LIGHTING DESIGN
401 HAWTHORNE LANE, SUITE 110-269
CHARLOTTE, NC 28204
(240) 731-1058

REVISIONS

DATE: NOVEMBER 30, 2018
PROJECT NO.: 9202-000
SHEET TITLE:

**OVERALL TICKET
LEVEL FLOOR PLAN
PLUMBING**

SHEET NUMBER:

P-120

KEYED NOTES: (THIS SHEET ONLY)

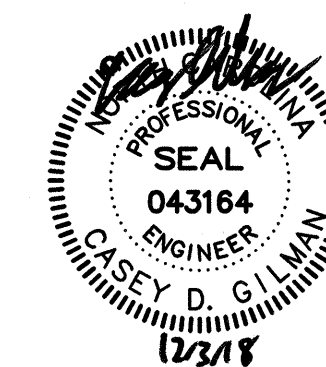
- ① REMOVE EXISTING SINK AND TANKLESS WATER HEATER BELOW COUNTER. REMOVE CONNECTED PIPING TO BELOW FLOOR. SEE DRAWING P-115.
- ② REMOVE EXISTING WATER DISPENSER. REMOVE CONNECTED PIPING TO BELOW FLOOR. SEE DRAWING P-115.
- ③ REMOVE EXISTING SINK AND GARBAGE DISPOSAL. REMOVE CONNECTED PIPING TO BELOW FLOOR. SEE DRAWING P-115.
- ④ REMOVE EXISTING DISHWASHER AND COFFEE MAKER. REMOVE CONNECTED PIPING TO BELOW FLOOR. SEE DRAWING P-115.
- ⑤ REMOVE EXISTING ICE MAKER CONNECTION BOX. REMOVE CONNECTED PIPING TO BELOW FLOOR. SEE DRAWING P-115.
- ⑥ REMOVE EXISTING LAVATORY. REMOVE CONNECTED PIPING TO BELOW FLOOR. SEE DRAWING P-115.
- ⑦ REMOVE EXISTING URINAL AND CARRIER. REMOVE CONNECTED PIPING TO BELOW FLOOR. SEE DRAWING P-115.
- ⑧ REMOVE EXISTING WATER CLOSET. REMOVE CONNECTED PIPING TO BELOW FLOOR. SEE DRAWING P-115.



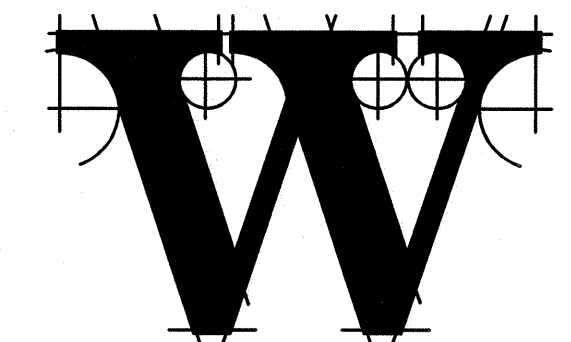
TERMINAL IMPROVEMENTS CONTRACT 2

WILMINGTON INTERNATIONAL AIRPORT
1740 AIRPORT BOULEVARD, SUITE 12
WILMINGTON, NC 28405

CHEATHAM & ASSOCIATES, P.A.
CONSULTING ENGINEERS
3412 ENTERPRISE DRIVE
WILMINGTON, NORTH CAROLINA
(910) 452-4210
FAX (910) 452-4211
OFFICE@CHEATHAMPA.COM
WWW.CHEATHAMPA.COM
NC LICENSE # C-1073
JOB # 17.86



ARCHITECT



THE WILSON GROUP
P O BOX 5510
CHARLOTTE, NC 28299
(704) 331-9747

PROJECT MANAGER & CIVIL ENGINEER
TALBERT & BRIGHT
4810 SHELLEY DRIVE
WILMINGTON, NC 28405
(910) 763-5350 FIRM NO.: C-0713

CONSULTING ARCHITECT
LS3P
101 NORTH THIRD STREET, SUITE 500
WILMINGTON, NC 28401
(910) 790-9901

STRUCTURAL ENGINEER
STEWART
101 N. TRYON ST., SUITE 1400
CHARLOTTE, NC 28202
(704) 909-3523 FIRM NO.: C-1051

P, M & E ENGINEER
CHEATHAM & ASSOC.
3412 ENTERPRISE DRIVE
WILMINGTON, NC 28405
(910) 452-4210

BAGGAGE HANDLING CONSULTANTS
BNP ASSOCIATES
1981 POST ROAD
FAIRFIELD, CT 06824
(203) 792-3000

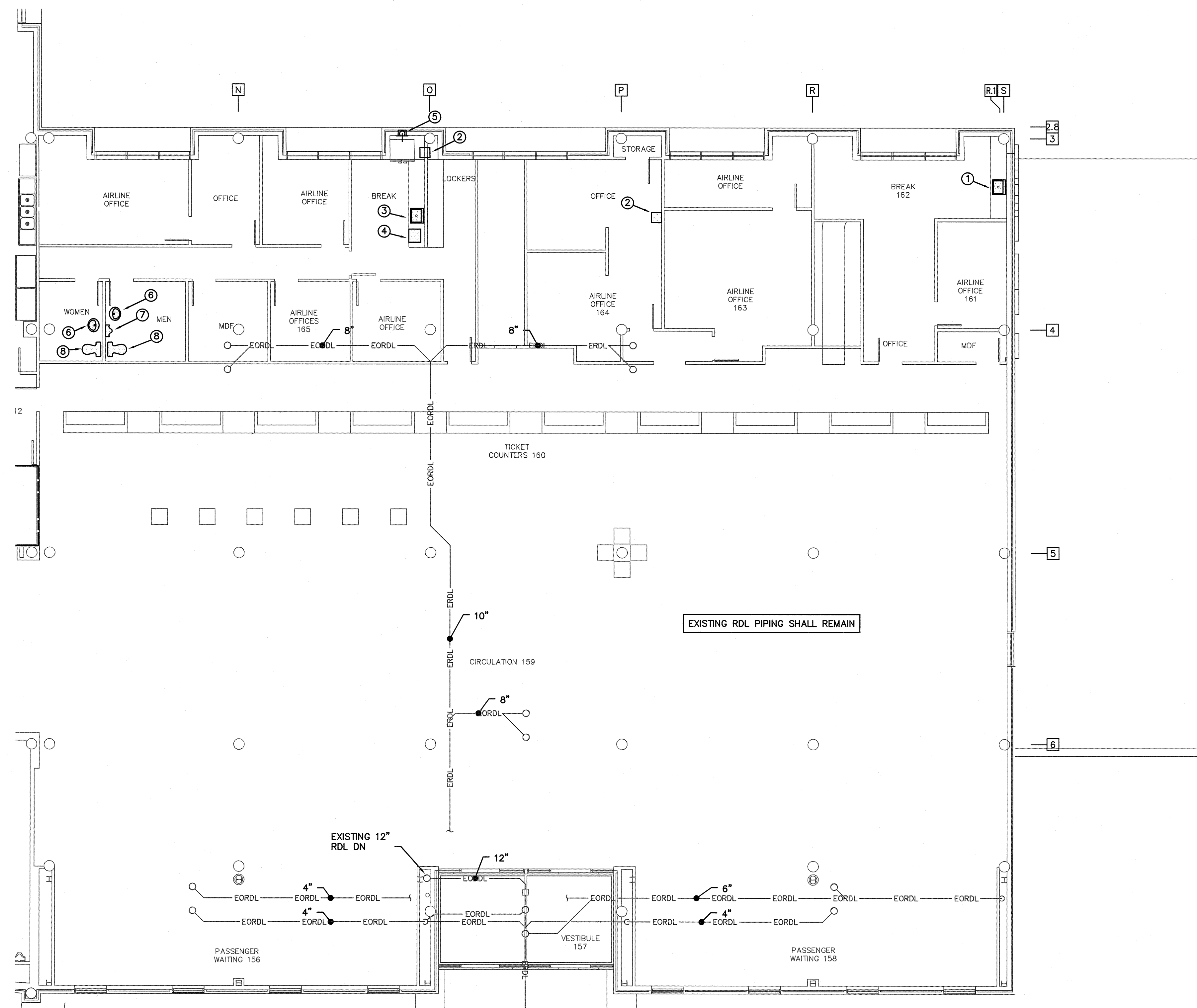
SPECIALTY LIGHTING CONSULTANT
HARTRANFT LIGHTING DESIGN
401 HAYTHORNE LANE, SUITE 110-269
CHARLOTTE, NC 28204
(240) 731-1058

REVISIONS

DATE: NOVEMBER 30, 2018
PROJECT NO.: 9202-000
SHEET TITLE:
SHEET NUMBER:

ENLARGED TICKET LEVEL FLOOR PLAN PLUMBING DEMOLITION

P-125



1
P-125
ENLARGED TICKET LEVEL FLOOR PLAN - PLUMBING DEMOLITION
SCALE: 1/8" = 1'-0"

GRAPHIC SCALE: 1/8"=1'-0"
0 2 4 8 16

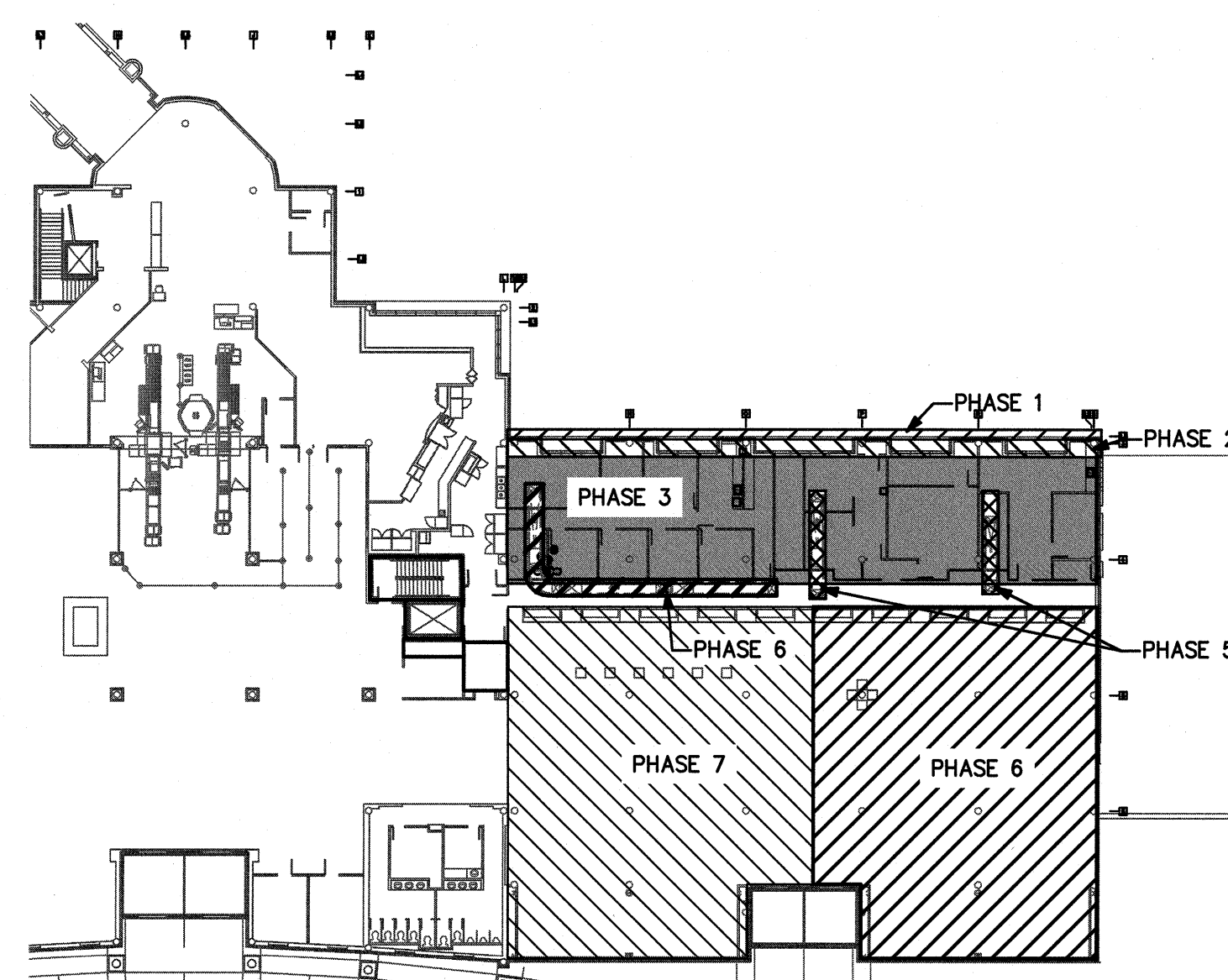
GENERAL NOTES:

1. EXISTING INFORMATION IS BASED ON A FIELD SURVEY AND EXISTING DRAWINGS. SOME INFORMATION PRESENTED IS ESTIMATED OR ASSUMED BASED ON EXPERIENCE. CONTRACTOR SHALL FIELD VERIFY CONDITIONS DURING BIDDING PHASE. PRIOR TO SUBMITTING BID AND DURING THE COURSE OF WORK AND ALERT THE ARCHITECT AND/OR ENGINEER OF DIFFERENCES BETWEEN FIELD CONDITIONS AND THE PLUMBING DRAWINGS THAT WILL PREVENT ANY PORTIONS OF THE PLUMBING SCOPE OF WORK FROM BEING INSTALLED AS DESIGNED.

PHASING NOTES:

- ARCHITECTURAL PHASE 1: DEMO BRICK VENEER.
- ARCHITECTURAL PHASE 2: DEMO REMAINING EXTERIOR WALL; CONSTRUCT TEMPORARY PARTITION.
- ARCHITECTURAL PHASE 3: DEMO TEMPORARY PARTITION; DEMO INTERIOR OFFICE AREAS; MAINTAIN LIGHTING FOR OCCUPANT PATHS THROUGH CONTRACTOR WORK SPACE.
- ARCHITECTURAL PHASE 4: N/A.
- ARCHITECTURAL PHASE 5: DEMO CONVEYORS.
- ARCHITECTURAL PHASE 6: DEMO COUNTERS; DEMO CONVEYOR; DEMO COLUMN MTD DEVICES. MAINTAIN LIGHTING FOR OCCUPANT PATHS THROUGH CONTRACTOR WORK SPACE.
- ARCHITECTURAL PHASE 7: DEMO COUNTERS; DEMO COLUMN MTD DEVICES. MAINTAIN LIGHTING FOR OCCUPANT PATHS THROUGH CONTRACTOR WORK SPACE.

SEE ARCHITECTURAL PLANS A-131 THROUGH A-137 FOR ADDITIONAL PHASING INFORMATION.
SEE BAGGAGE HANDLING SYSTEM PLANS B-701 THROUGH B-708 FOR ADDITIONAL PHASING INFORMATION.

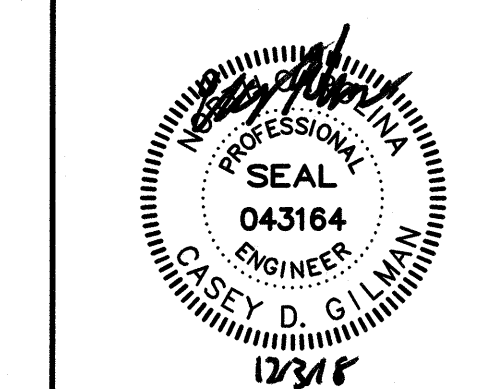




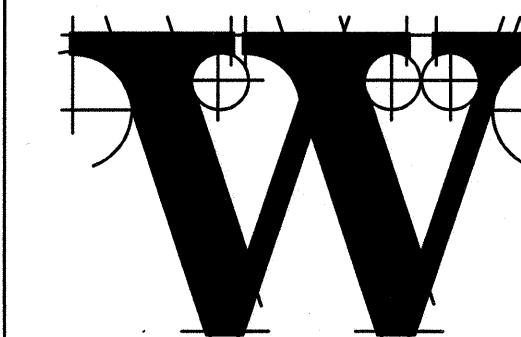
TERMINAL IMPROVEMENTS CONTRACT 2

WILMINGTON INTERNATIONAL AIRPORT
1740 AIRPORT BOULEVARD, SUITE 12
WILMINGTON, NC 28405

CHEATHAM & ASSOCIATES, P.A.
CONSULTING ENGINEERS
3412 ENTERPRISE DRIVE
WILMINGTON, NORTH CAROLINA
(910) 452-4210
FAX (910) 452-4211
OFFICE@CHEATHAMPA.COM
WWW.CHEATHAMPA.COM
NC LICENSE # C-1073
JOB # 17.86



ARCHITECT



THE WILSON GROUP

P.O. BOX 5510
CHARLOTTE, NC 28209
(704) 331-9747

PROJECT MANAGER & CIVIL ENGINEER

TALBERT & BRIGHT

4810 SHELLEY DRIVE
WILMINGTON, NC 28405
(910) 763-5350 FIRM NO.: C-0713

CONSULTING ARCHITECT

LS3P

101 NORTH THIRD STREET, SUITE 500
WILMINGTON, NC 28401
(910) 790-8901

STRUCTURAL ENGINEER

STEWART

101 N. TRYON ST., SUITE 1400
CHARLOTTE, NC 28202
(704) 909-3523 FIRM NO.: C-1051

P. M. & E. ENGINEER

CHEATHAM & ASSOC.

3412 ENTERPRISE DRIVE
WILMINGTON, NC 28405
(910) 452-4210

BAGGAGE HANDLING CONSULTANTS

BNP ASSOCIATES

1981 POST ROAD
FAIRFIELD, CT 06824
(203) 792-3000

SPECIALTY LIGHTING CONSULTANT

HARTRANFT

LIGHTING DESIGN

401 HAWTHORNE LANE, SUITE 110-269
CHARLOTTE, NC 28204
(240) 731-1058

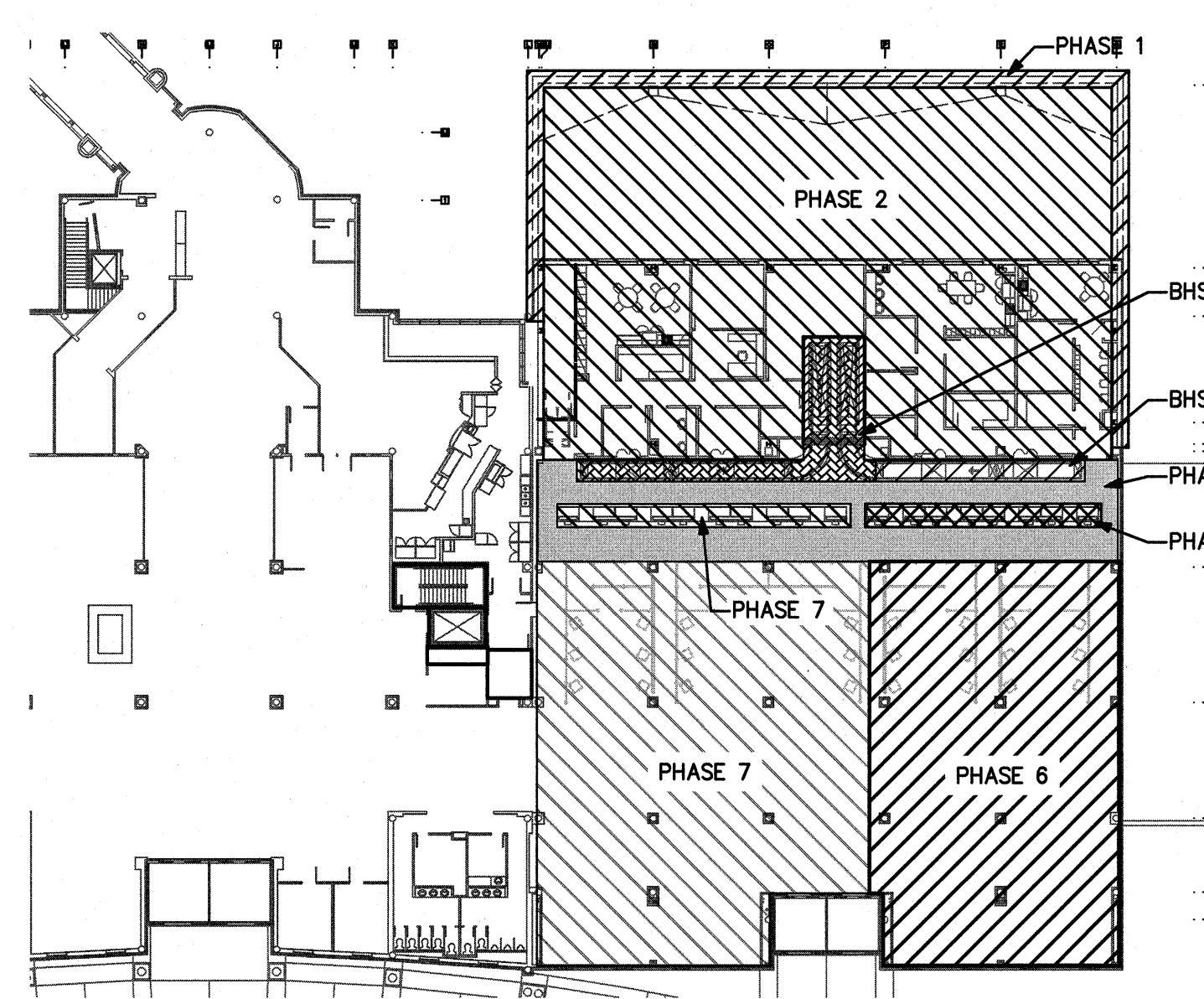
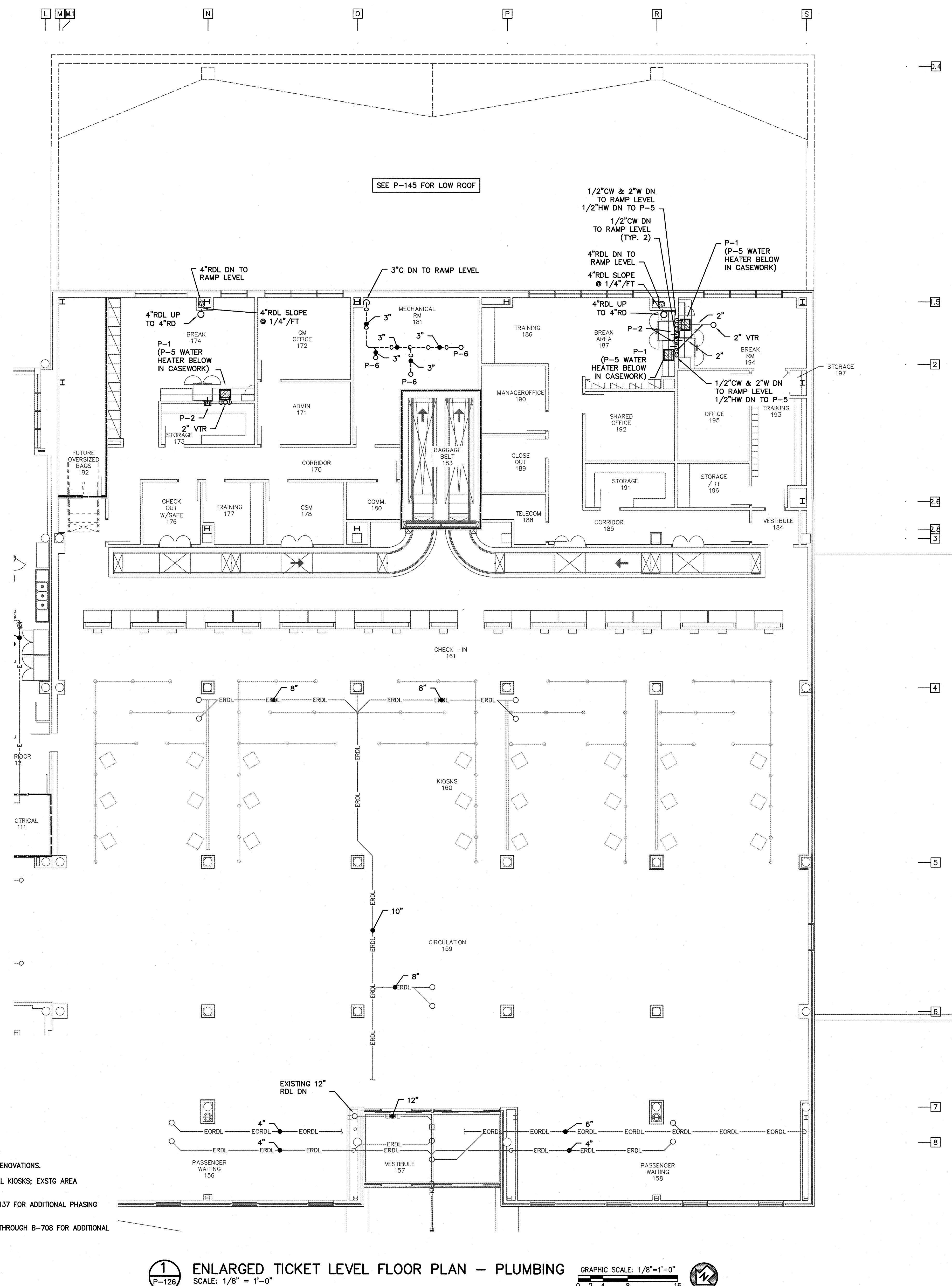
REVISIONS

DATE: NOVEMBER 30, 2018
PROJECT NO.: 9202-000
SHEET TITLE:

ENLARGED TICKET
LEVEL FLOOR PLAN
PLUMBING

SHEET NUMBER:

P-126



PHASING NOTES:

PHASE 1: CONSTRUCTION NEW SHELL

PHASE 2: INTERIOR UPFIT.

BHS PHASE 2: INSTALL CONVEYOR.

PHASE 3: N/A.

PHASE 4: INSTALL NEW CEILING.

BHS PHASE 3: INSTALL CONVEYORS.

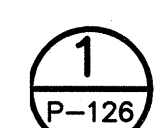
PHASE 5: INSTALL NEW COUNTERS.

PHASE 6: INSTALL KIOSKS; EXSTG AREA RENOVATIONS.

PHASE 7: INSTALL NEW COUNTERS; INSTALL KIOSKS; EXSTG AREA RENOVATIONS.

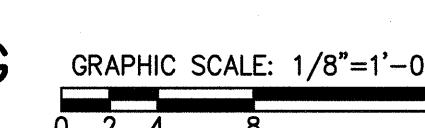
SEE ARCHITECTURAL PLANS A-131 THROUGH A-137 FOR ADDITIONAL PHASING INFORMATION.

SEE BAGGAGE HANDLING SYSTEM PLANS B-701 THROUGH B-708 FOR ADDITIONAL PHASING INFORMATION.



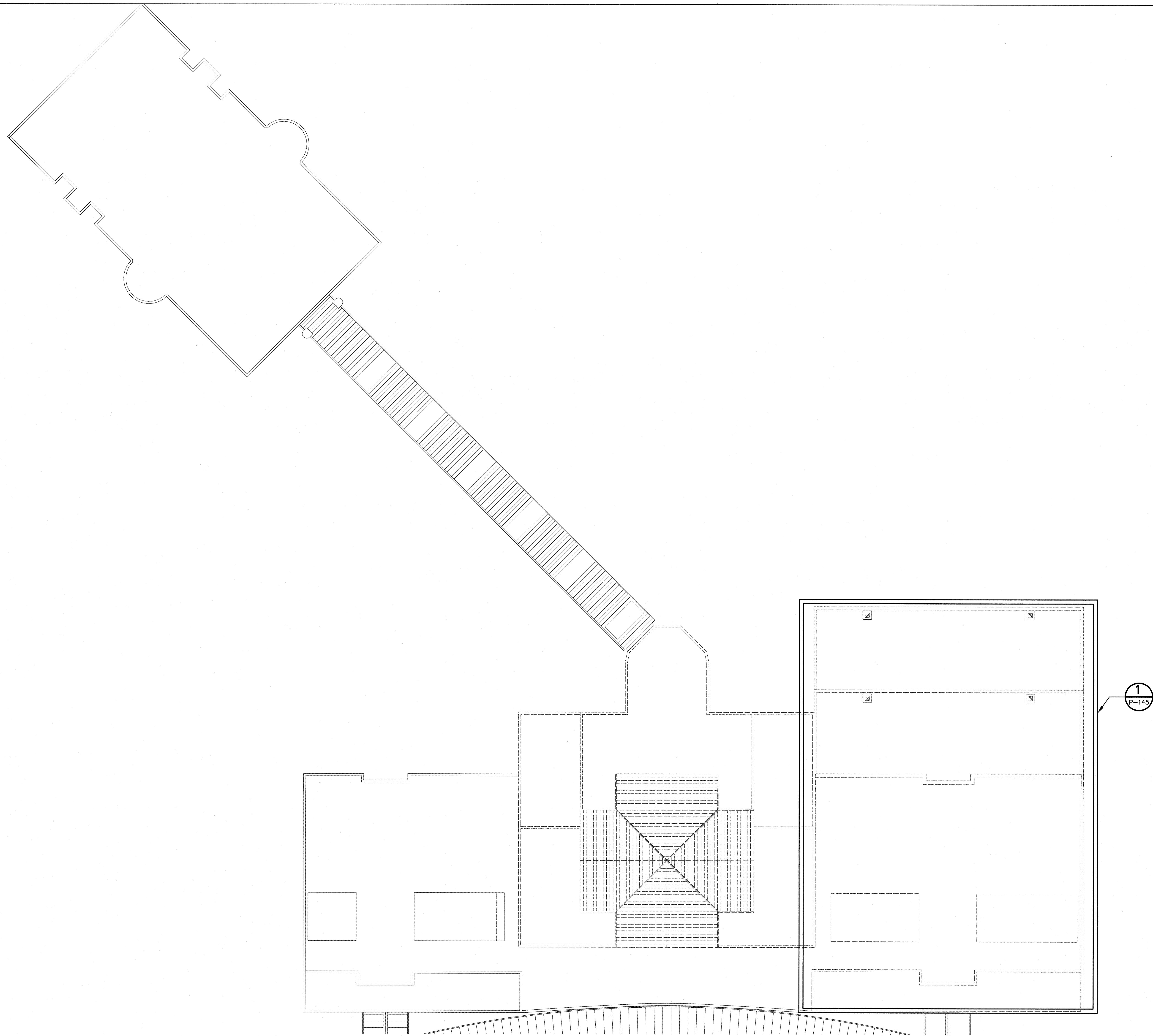
ENLARGED TICKET LEVEL FLOOR PLAN - PLUMBING

SCALE: 1/8" = 1'-0"



GENERAL NOTES:

- EXISTING INFORMATION IS BASED ON A FIELD SURVEY AND EXISTING DRAWINGS. SOME INFORMATION PRESENTED IS ESTIMATED OR ASSUMED BASED ON EXPERIENCE. CONTRACTOR SHALL FIELD VERIFY CONDITIONS DURING BIDDING PHASE, PRIOR TO SUBMITTING BID AND DURING THE COURSE OF WORK AND ALERT THE ARCHITECT AND/OR ENGINEER OF DIFFERENCES BETWEEN FIELD CONDITIONS AND THE PLUMBING DRAWINGS THAT WILL PREVENT ANY PORTIONS OF THE PLUMBING SCOPE OF WORK FROM BEING INSTALLED AS DESIGNED.



1
P-140

OVERALL ROOF PLAN — PLUMBING

SCALE: 1" = 20'-0"

GRAPHIC SCALE: 1"=20'-0"

0' 5' 10' 20' 40'

12



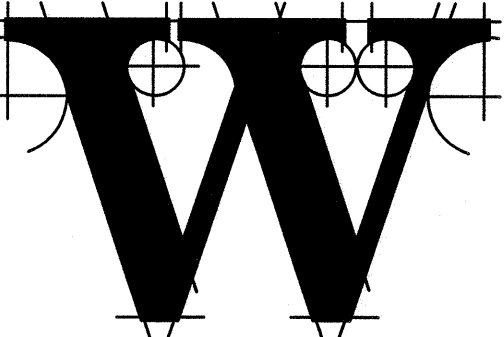
**TERMINAL
IMPROVEMENTS
CONTRACT 2**

WILMINGTON INTERNATIONAL AIRPORT
1740 AIRPORT BOULEVARD, SUITE 12
WILMINGTON, NC 28405

CHEATHAM & ASSOCIATES, P.A.
CONSULTING ENGINEERS
3412 ENTERPRISE DRIVE
WILMINGTON, NORTH CAROLINA
(910) 452-4211
FAX (910) 452-4211
OFFICE@CHEATHAMPA.COM
WWW.CHEATHAMPA.COM
NC LICENSE # C-1073
JOB # 17.86



ARCHITECT



THE WILSON GROUP
P O BOX 5510
CHARLOTTE, NC 28209
(704) 331-9747

PROJECT MANAGER & CIVIL ENGINEER
TALBERT & BRIGHT
4810 SHELLEY DRIVE
WILMINGTON, NC 28405
(910) 763-5350 FIRM NO.: C-0713

CONSULTING ARCHITECT
LS3P
101 NORTH THIRD STREET, SUITE 500
WILMINGTON, NC 28401
(910) 790-9901

STRUCTURAL ENGINEER
STEWART
101 N. TRYON ST., SUITE 1400
CHARLOTTE, NC 28202
(704) 908-3523 FIRM NO.: C-1051

P, M & E ENGINEER
CHEATHAM & ASSOC.
3412 ENTERPRISE DRIVE
WILMINGTON, NC 28405
(910) 452-4210

BAGGAGE HANDLING CONSULTANTS
BNP ASSOCIATES
1981 POST ROAD
FAIRFIELD, CT 06824
(203) 792-3000

SPECIALTY LIGHTING CONSULTANT
**HARTRANFT
LIGHTING DESIGN**
401 HAYTHORNE LANE, SUITE 110-269
CHARLOTTE, NC 28204
(240) 731-1058

REVISIONS

- .
- .
- .
- .
- .
- .
- .
- .

DATE: NOVEMBER 30, 2018
PROJECT NO.: 9202-000
SHEET TITLE:

**OVERALL ROOF
PLAN PLUMBING**

SHEET NUMBER:

P-140



CHEATHAM & ASSOCIATES, P.A.
CONSULTING ENGINEERS
3412 ENTERPRISE DRIVE
WILMINGTON, NORTH CAROLINA
(910) 452-4210
FAX (910) 452-4211
OFFICE@CHEATHAMPA.COM
WWW.CHEATHAMPA.COM
NC LICENSE# C-1073



CONSULTING ARCHITECT

STRUCTURAL ENGINEER

STEWART

101 N. TRYON ST., SUITE 1400
CHARLOTTE, NC 28202
(704) 909-3523 FIRM NO.: C-1051

P. M & E ENGINEER

CHEATHAM & ASSOC
3412 ENTERPRISE DRIVE
WILMINGTON, NC 28405
(910) 452-4210

BAGGAGE HANDLING CONSULTANTS

BNP ASSOCIATES
1981 POST ROAD
FAIRFIELD, CT 06824
(203) 792-3000

SPECIALTY LIGHTING CONSULTANT

**HARTRANFT
LIGHTING DESIGN**
401 HAWTHORNE LANE, SUITE 110-269
CHARLOTTE, NC 28204
(240) 731-1058

REVISIONS

-
-
-
-
-

DATE: NOVEMBER 30, 2018
PROJECT NO.: 9202-000
SHEET TITLE:

ENLARGED ROOF
PLAN PLUMBING

SHEET NUMBER:

P-145

