

**REPLACE UNIT HEATERS IN HANGER BAYS
WORK REQUEST #4955133
BUILDING 250**

1. GENERAL INTENTION. It is the intention of this solicitation to obtain the supervision, expertise, labor, materials, and equipment to accomplish the removal, disposal, and replacement of six (6) overhead steam unit heaters in the hanger bays. The heaters are approximately seventy (70) feet above the hanger floor. Modify or replace the existing mounting framework. Replace the wiring from electrical disconnect to the new unit. The contractor is responsible for an on-site inspection to verify the work required. The contractor will provide a one (1) year warranty on labor and a one (1) year manufactures warranty on materials. Equipment and materials must be installed to the manufacturer's specifications. Provide warranty information and three (3) copies of the equipment manuals to the Facility Maintenance Warranty Technician, Larry Brock, at 466-2919.

Equipment requirements:

Wing Model HCR-43 or equal
Vertical Steam Unit Heater
High Ceiling Unit with Revolving Discharge
8-R Adjustable Discharge Nozzles (Two-Outlet)
Mechanical header-tube connection
OSHA Fan Guard
Bird Guard (factory supplied or contractor fabricated)
30 lbs. steam
Speed R.P.M. 850
C.F.M at inlet 21,500
Motor H.P. 5
High-torque gear motor with idler gear drive
B.T.U.H. 1,236,400
Cond. Lbs. per hour @ 60 degrees F. 1,287
Approximate Net Weight 900 Lbs.
230-460 volts, 3-phase

2. LOCATION. Hanger 250

3. DETAILED REQUIREMENTS. The contractor shall:

a. Coordinate all work with the government inspector and the building occupants. Lifting equipment must be approved by the government inspector.

ENCLOSURE (1)

b. Moving aircraft and equipment must be scheduled through the government inspector and must meet the requirements listed in item f under Special Requirements.

c. Lock and tag out electrical and piping circuits.

d. Use appropriate personnel protective equipment such as safety glasses, hard hats, safety harnesses, hearing protection, protective clothing, and gloves. Secure the area in the vicinity of the heaters to prevent the building occupants from entering the work space.

e. Disconnect the electrical, piping, and mounting framework. Remove the unit heater.

f. Modify or replace the mounting framework.

g. Install the replacement heater. Replace the dirt leg, vacuum breaker, strainer with blow down valve, steam trap, check valve, condensate shut-off valves (2 each heater) and steam supply shut-off valve. The contractor will be responsible for measuring the lines and fittings.

h. Replace the wiring from the electrical disconnect to the heating unit and replace the thermostat on each unit. Replace the heaters in the starters if they are not sized to the new equipment.

i. Energize the electrical and piping circuits; check the operation of the new units.

4. SPECIAL REQUIREMENTS. The contractor shall be required to:

a. Notify the Contracting Office prior to the commencement of work.

b. Have all materials on-site prior to commencement.

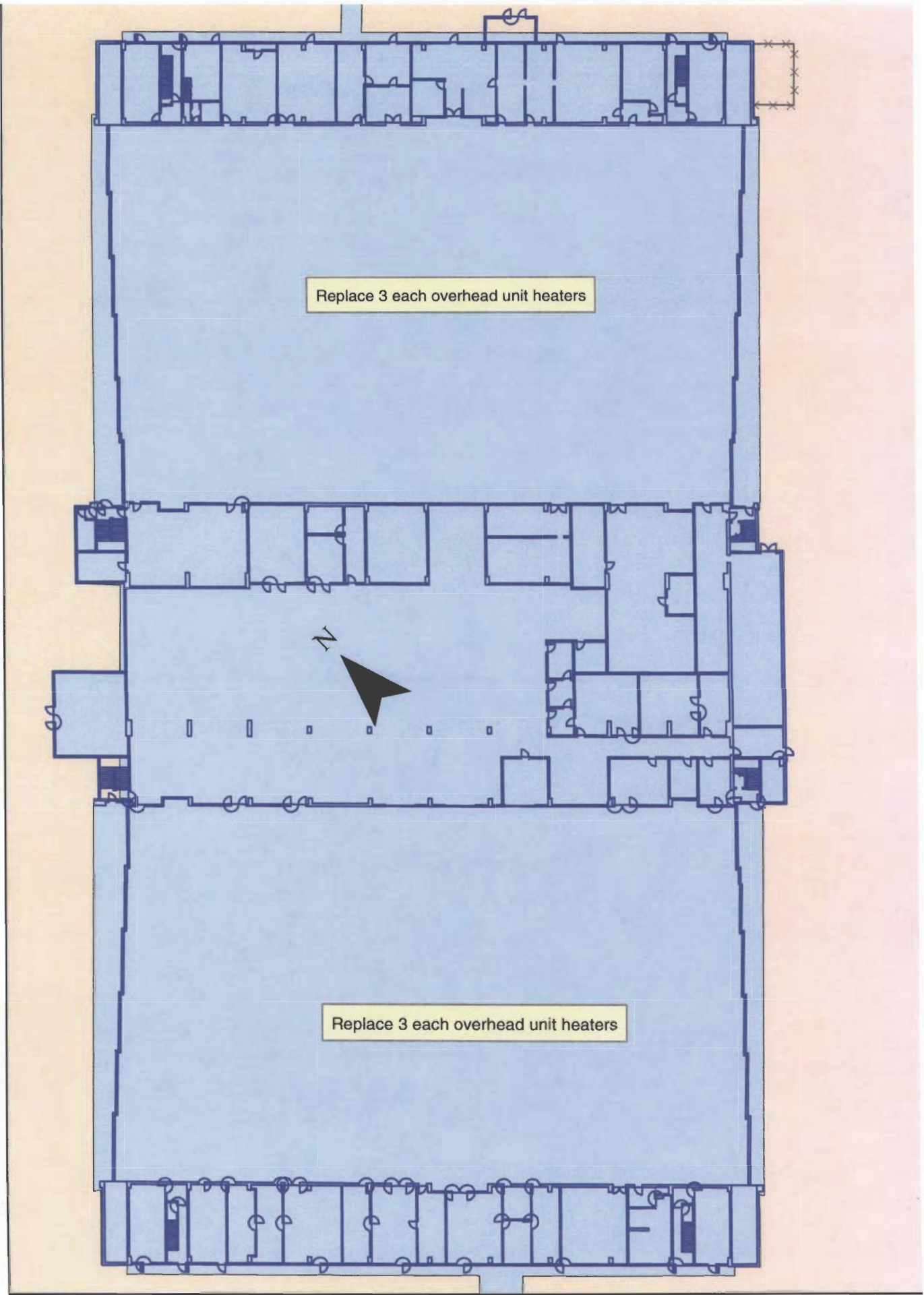
c. Complete the work within sixty (60) calendar days.

d. All material associated with the repair, replacement, or removal is the property of the contractor and shall be removed from the air station and discarded in an approved landfill.

e. All North Carolina Building Codes, Fire Codes, Statutes, NEC, and other OSHA Safety Codes shall be strictly enforced.

The contractor is responsible for any required permits.

f. All outages require Contractor's written request fifteen (15) days prior to commencement of such work and Contracting Officer's approval.



Replace 3 each overhead unit heaters



Replace 3 each overhead unit heaters

ENCLOSURE (2)

General Decision Number: NC080055 02/20/2009 NC55

Superseded General Decision Number: NC20070055

State: North Carolina

Construction Type: Building

County: Craven County in North Carolina.

Modification Number	Publication Date
0	02/08/2008
1	03/07/2008
2	06/06/2008
3	01/30/2009
4	02/13/2009
5	02/20/2009

* BOIL0030-001 01/01/2009

	Rates	Fringes
Boilermaker.....	\$ 27.63	13.96

Welder:

Pressure welder: \$.75 per hour additional.

SUNC2000-002 03/21/2000

	Rates	Fringes
Carpenter _(includes drywall hanging)...	\$ 9.82	
Cement mason/concrete finisher.....	\$ 9.75	
Electrician.....	\$ 10.18	
Laborer, general.....	\$ 7.17	
Painter, brush.....	\$ 10.00	
Pipefitter _(includes HVAC piping).....	\$ 13.50	.93
Plumber _(does not include HVAC piping).....	\$ 11.75	.66
Power equipment operators: _Backhoe operator.....	\$ 10.54	
Sheet metal worker _(includes HVAC duct work)...	\$ 11.56	.97
Truck driver.....	\$ 7.88	

WELDERS - Receive rate prescribed for craft performing
operation to which welding is incidental.
=====

Unlisted classifications needed for work not included within
the scope of the classifications listed may be added after
award only as provided in the labor standards contract clauses
(29CFR 5.5 (a) (1) (ii)).

In the listing above, the "SU" designation means that rates
listed under the identifier do not reflect collectively
bargained wage and fringe benefit rates. Other designations
indicate unions whose rates have been determined to be
prevailing.

WAGE DETERMINATION APPEALS PROCESS

1.) Has there been an initial decision in the matter? This can
be:

- * an existing published wage determination
- * a survey underlying a wage determination
- * a Wage and Hour Division letter setting forth a position on
a wage determination matter
- * a conformance (additional classification and rate) ruling

On survey related matters, initial contact, including requests
for summaries of surveys, should be with the Wage and Hour
Regional Office for the area in which the survey was conducted
because those Regional Offices have responsibility for the
Davis-Bacon survey program. If the response from this initial
contact is not satisfactory, then the process described in 2.)
and 3.) should be followed.

With regard to any other matter not yet ripe for the formal
process described here, initial contact should be with the
Branch of Construction Wage Determinations. Write to:

Branch of Construction Wage Determinations
Wage and Hour Division
U.S. Department of Labor
200 Constitution Avenue, N.W.
Washington, DC 20210

2.) If the answer to the question in 1.) is yes, then an
interested party (those affected by the action) can request
review and reconsideration from the Wage and Hour Administrator
(See 29 CFR Part 1.8 and 29 CFR Part 7). Write to:

Wage and Hour Administrator
U.S. Department of Labor

200 Constitution Avenue, N.W.
Washington, DC 20210

The request should be accompanied by a full statement of the interested party's position and by any information (wage payment data, project description, area practice material, etc.) that the requestor considers relevant to the issue.

3.) If the decision of the Administrator is not favorable, an interested party may appeal directly to the Administrative Review Board (formerly the Wage Appeals Board). Write to:

Administrative Review Board
U.S. Department of Labor
200 Constitution Avenue, N.W.
Washington, DC 20210

4.) All decisions by the Administrative Review Board are final.

=====

END OF GENERAL DECISION